



ARCHETECH

Turning Dreams into Reality

Issue 48 £4.99





YOUR PERFECT PARTNER



when only real stone will do

bonded to the substrate of choice

A range of **Real Stone Veneers** available laminated in a variety of thicknesses on MDF and dp-lite Hollowcore, in a sheet size up to 2440 x 1220mm. This innovative product is made from a thin layer of stone, either quartzite or slate, with a resin reverse that is bonded with a high performance PUR adhesive to the substrate. **Available in quantities as little as just one board.**

Contact us for more information.

Century House, Premier Way, Lowfields Business Park,
Elland, West Yorkshire, HX5 9HF

T: +44 (0) 1484 658341 E: info@decorativepanels.co.uk
www.decorativepanels.co.uk

ARCHECH

Turning Dreams into Reality

Main Features

Bathrooms & Kitchens 12 - 17

Coatings 21 - 23

Doors, Windows & Fittings 26 - 39

Floors & Flooring 43

Heating, Ventilation & Insulation 44 - 47

Interiors 50 - 51

Landscaping & External Works 55

Roofing, Cladding & Facades 58 - 61

Safety, Security & Fire Protection 62 - 66

Editors Choice 67 - 77

Editorial Highlights 80 - 82

Case Studies/Trade Shows

THREE ANGLE HOUSE - 10

The Three Angle House has been designed specifically to make the most of the three stunning views offered on this site in Mount Martha.

BRIGHTON COLLEGE - 18

The School of Science and Sports at Brighton College defies the conventional character of educational buildings – one of endless empty hallways and imposed silence – and instead combines the two departments to create a vibrant building with lively spaces where activities are not necessarily dictated by a school timetable.

CEPEZED - 40

Building D(emountable) is a modern, sustainable and fully demountable structure on the site of a historic, monumental building complex in the center of Dutch city Delft. This site is owned by cepezed, an agency with expertise in the development, the design and the realization of buildings.

GLENN HOWELLS ARCHITECTS - 48

A transformational project for English National Ballet (ENB) who have relocated to this purpose built 93,000 sq ft 'dance factory' in London City Island by Ballymore (phase one) and EcoWorld Ballymore (phase two).

LEMAY + ESCOBAR ARCHITECTURE & ODA - 52

Charlie West – Manhattan's only new ground-up construction residential development in Hell's Kitchen – is now complete.

PROTEUS - 56

A new state-of-the-art Graduate Centre and student accommodation pavilions at St Catherine's College, Oxford, have become the latest developments to feature eye-catching Proteus HR cladding panels, manufactured by Proteus Facades.

MAAJ - 64

harmoniously INTEGRATED in the surrounding urban environment.

FIRM ARCHITECTS - 78

The new Amsterdam office of Dutch investment manager/developer Amvest

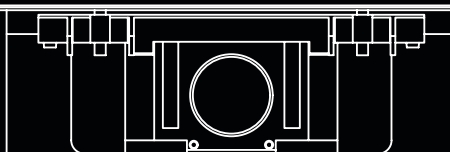




Take a long, hard look at

Size + Performance & Compliance + System Integration

Schlüter®-KERDI-LINE-G3



www.lowheightdrain.co.uk



Editor in Chief
Antony Holter - 0203 911 4067
antony@archetech-media.co.uk

Editor
Isabelle Hart - 0203 911 4067
isabelle@archetechmag.co.uk

Sales Director
Steve Hawkins - 0203 907 9165
steve@archetech-media.co.uk

Sales Manager
Lauren Pettman - 0203 907 9166
lauren@archetech-media.co.uk

Digital Manager
Jamie Bullock - 01227 936971
jamie@archetech-media.co.uk

Editorial Assistant
Chris Nicholls - 0203 911 4067
chris@archetech-media.co.uk

Business Manager
Josh Holmes - 0203 911 4067
josh@archetech-media.co.uk

Publishing Director
Martin Holmes - 0203 911 4067
martin@archetechmag.co.uk

Accounts
Lauren Davis - 0203 911 4067
lauren@archetechmag.co.uk

Studio Designer
Richard Bland
richard@archetech-media.co.uk

ARCHETECH

Turning Dreams into Reality

The Archetech magazine is an insightful information source for Architects, Architectural Technologists and Interior Designers. We feature lead stories on current projects, industry news and case studies so that our readers have the opportunity to keep up to date in the ever changing world of architecture and design.

Archetech offers architectural and design services to all those who are initiating, planning and implementing projects. Whether you're an interior designer, architect, technologist, developer or builder who is searching for inspiration for the next project, Archetech hosts the latest products, case studies and services to meet those needs.

With sharp editorial content, a cutting-edge design approach and informative written style, our advertisers and readers alike can take confidence in our experience and ability in matching your product to the needs of the marketplace.

Archetech Media Ltd
Tel: 020 3911 4067
www.archetech.org.uk
info@archetechmag.co.uk

Every effort is made to ensure the accuracy and reliability of material published in Archetech Magazine, however, the publishers accept no responsibility for the claims or opinions made by contributors, manufacturers or advertisers. No part of the publication may be reproduced or transmitted in any form or by any means, mechanical, electronic (including printing), recording or stored in any information retrieval system without the express prior written consent of the publisher.

SUBSCRIBE NOW

Digital Edition

SUBSCRIBE TO OUR ONLINE ISSUES FREE OF CHARGE

- Accessible anytime and anywhere on most electronic devices
- Receive the magazine by email as soon as each issue is released
- All issues are stored in an archive, so you can look back across every edition
- Now available on 3 major digital platforms: ISSUU, Joomag and Readly

Printed Edition

- Free of charge for qualifying trade professionals
- Paid subscriptions are available, for non qualifying trade professionals



HAVE YOU GOT A PROJECT YOU ARE PROUD OF?

If you've recently finished a project, conversion or renovation, why not submit it to our Editor in Chief for a chance to be featured in our next issue! Email antony@archetech-media.co.uk with details of your latest project.

Visit: www.archetech.org.uk/subscribe



CUBE BERLIN SMART OFFICE BUILDING

SHOWCASING THE SMARTEST BUILDING ADVANCES IN GERMANY

This sculptural, iconic building features pioneering smart office technologies and is situated in the heart of Berlin on the historically significant site, Washingtonplatz. As one of Berlin's new emerging public spaces, this site provides the ideal setting for this new landmark that showcases the latest advances in sustainability, design, digitization, and comfort. cube berlin is an integral part of the Europacity masterplan - an emerging urban district surrounding the Berlin main train station.

"We are honoured to share our design philosophy in such an important location," says Kim Herforth Nielsen, Founder and Creative Director of 3XN. "With cube berlin, we suggest that a new architectural path for commercial architecture is possible. An office building can actually look like a piece of art – and this is a notion that we knew was important for a city like Berlin.



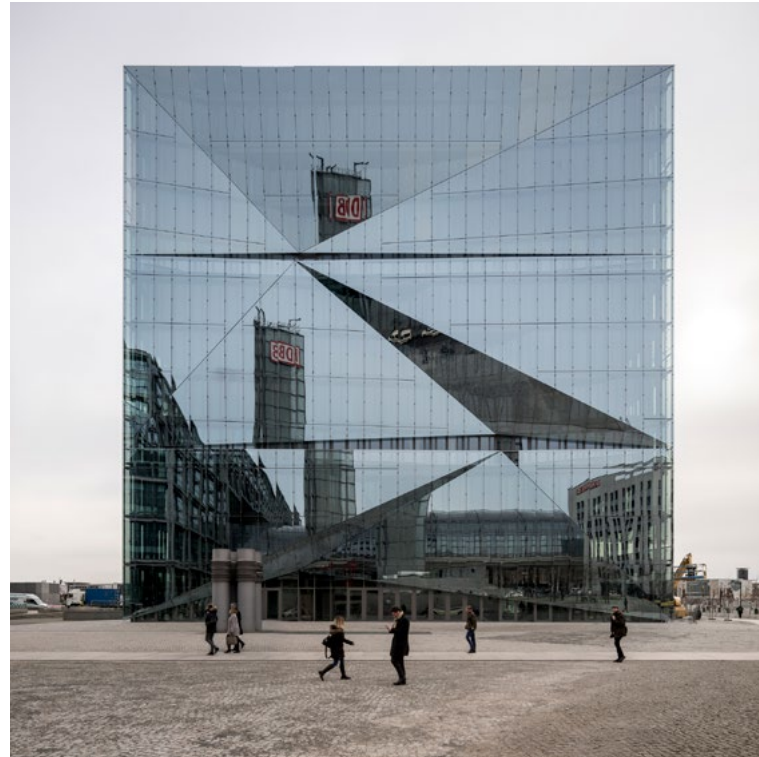
“

cube berlin is designed to be a catalyst for social experiences – both inside and out

This project also creates new moments of interaction with the city. We can already see that pedestrians are attracted to the cube; they enjoy catching their reflections in the glass. At the same time, cube berlin showcases the smartest building advances in Germany. In combining cutting edge design with user comfort, we want to show that healthy, productive places to work can also be sustainable.”

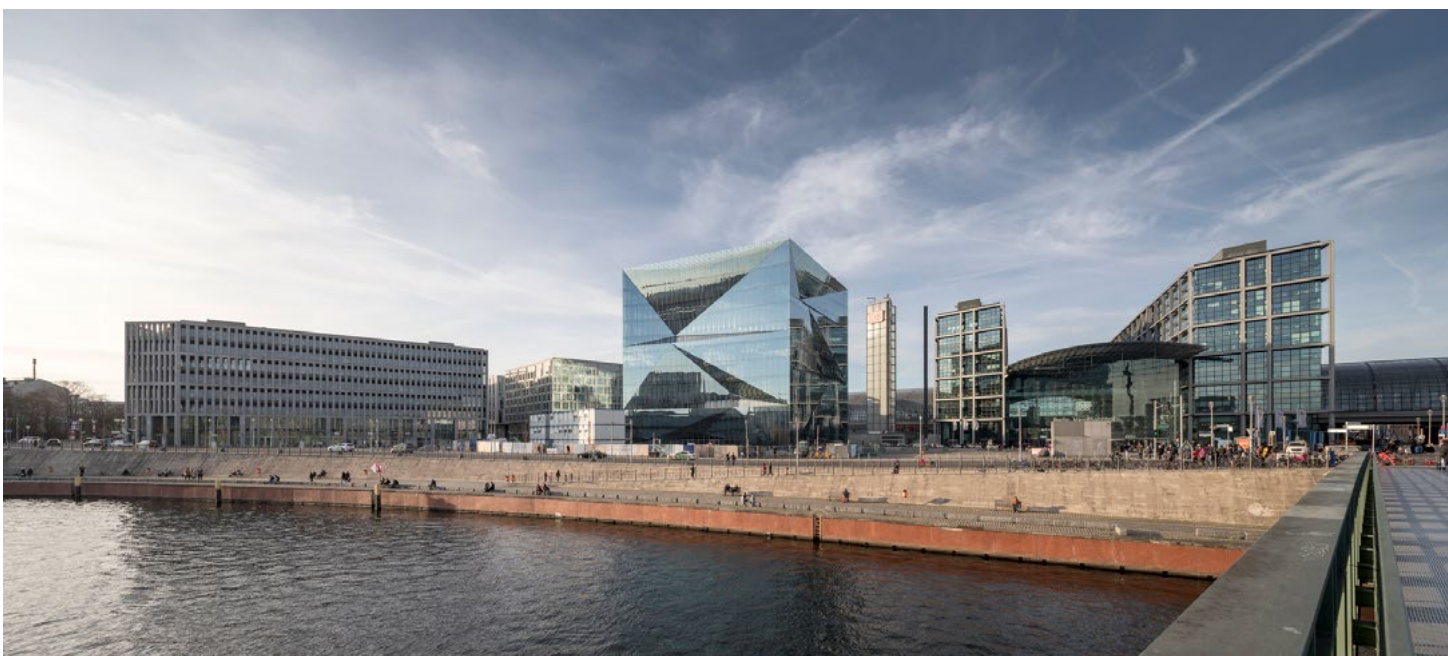
Torben Østergaard, 3XN Partner in Charge of the project continues, “When we began the design process, our ambition was to create a building that would contribute to the animation of the square. We wanted to engage by-passers while providing top-notch office spaces. We also wanted this project to offer new value to the Berlin skyline, while exploring new ways for buildings to interact with their surroundings. Given the conditions of the location, we proposed a sculpted design approach that would reflect the site’s scale and honour its character as an important public space.

The resulting design provides outside terraces at all levels, which are integrated in the façade. The triangulated relief of the façade is emphasised via reflective glazing, which invites street-level viewers to experience their city in unexpected - almost kaleidoscopic - ways. In the end, cube berlin presents an interesting paradox: it is a wildly complex sculpture disguised as a highly streamlined iteration.” cube berlin offers 10 floors of flexible, multi-tenant office space; a ground-level food market and office lobby; underground parking & plant rooms, a rooftop terrace; and optional conference areas. In total, cube berlin spans 19.500 m2 of highly flexible, modular above-ground space. Commercial tenants will enjoy such features as floor to ceiling windows offering stunning vistas of Berlin landmarks including Tiergarten, Kanzleramt, Reichstag; abundant natural daylight; natural ventilation via opening windows; external solar shading; and outdoor terraces on all floors. Outside, cube berlin presents unprecedented opportunities for pedestrian



activation in and around this highly dense, urban site – created by plazas and gathering spaces surrounding the building.

cube berlin is designed to be a catalyst for social experiences – both inside and out. Therefore, the design aims to animate the prominent urban location and engage in a dialogue with the site’s busy square. All four facades support interaction between the building occupants and the surrounding environment, deliberately creating a subtle boundary between indoor and outdoor spaces. cube berlin also reinterprets the idea of the cube, due to reflective glazing that mirrors both the adjacent nature and skyline. While the defining geometry of the structure maintains a true cubical volume measuring 42.5 meters in all directions, 3XN has created deliberate geometric transformations that create a prismatic pattern of triangular surface reliefs.





Segments of the façade are pushed inward in order to create outdoor terraces at all levels. The roof is envisioned as a “fifth façade” and completes the concept of the cube. A vast rooftop terrace serves as a common space for tenants and can be used as a breakout or event space. Surrounding Berlin landmarks are reflected in all angles of the façade, allowing this landmark structure to shed a dynamic new light on its surroundings, both day and night.

Inside, cube berlin is designed to cater to future demands for flexible office layouts and can accommodate shifting structural needs. The floors are arranged around a central core and can be divided into a mixture of separate units or connected via internal atria. 3XN's design encourages communication and social activity through dynamic workplace constellations available in a wide range of sizes.

cube berlin is a next-generation smart building that sets new standards for the integration of intelligent digital user interfaces. Users are invited to interact with the building through a “bring your own device” approach. This is achieved via an app that drives sustainable behaviour and increases energy efficiency while reducing unnecessary operational costs and maintenance irregularities. In this way, users can interact with their workspaces in unprecedented ways. Smart features allow tenants to customize and control such features as access control, indoor heating and cooling, maintenance, energy supply, room and parking reservations, charging of electric cars/bicycles, and more.

Building operational information is stored in a large “digital brain” server that connects the individual intelligent systems of cube berlin. Energy flow and consumption are monitored and maximized, resulting in a building that is both self-learning and highly efficient. In this way, the building and its users enter into an interplay where both are learning from each other. The building learns to adjust to the preferences of its users, while the users can control and adapt the building's settings according to their desires and needs.

Contrary to conventional wisdom, the fully glazed façade of cube berlin is highly energy efficient due to its osmotic skin and thoughtful design that includes a pioneering application of solar coatings on the outer skin of the double façade. This, in addition to a suite of technical solutions that include energy capture from heat, allows cube berlin to perform as a highly energy effective fully glazed building. Architecturally, cube berlin's fully glazed façade provides a dramatic commentary on the Berlin cityscape, while the technical performance of the material allows for energy performance and control that will allow the building to pursue a DGNB Gold certification.

www.3xn.com





A great rate and instant access to your business savings. Now that's smart.

Earn one of the best rates on the high street and access your money for whatever you need, whenever you need it, with our Business Instant Access savings account.

Search TSB Business Instant Access Savings.



Source: Comparison of Business Instant Access savings accounts available in the UK, see tsb.co.uk/BIA.

TSB Bank plc. Registered Office: Henry Duncan House, 120 George Street, Edinburgh EH2 4LH. Registered in Scotland No. SC95237. Authorised by the Prudential Regulation Authority and regulated by the Financial Conduct Authority and the Prudential Regulation Authority. Registration No. 191240. TSB Bank plc is covered by the Financial Services Compensation Scheme and the Financial Ombudsman Service. (Please note that due to the schemes' eligibility criteria not all TSB business customers will be covered by these schemes.)



THREE ANGLE HOUSE

THE THREE ANGLE HOUSE HAS BEEN DESIGNED SPECIFICALLY TO MAKE THE MOST OF THE THREE STUNNING VIEWS OFFERED ON THIS SITE IN MOUNT MARTHA

Images: Ellie Scott, Anthony Richardson,

Architect Christopher Megowan, Director of Megowan Architectural, was engaged to work on the project. He explained the moment he first visited the site "I stood on my car and turned around and I was blown away. It's one thing to have one view on a site but three uniquely stunning and different views. To the north, you can see Mornington and Port Phillip Bay, the greenery of Mount Martha Reserve and Point Nepean to the west, and to the northwest the Melbourne CBD on the horizon. The decision to build the house around these views was instantaneous and the agreement was in unison with the clients".

Owners Jo and Colin Turner knew they were not going to build a run-of-the-mill home for their dream seachange home. "We wanted something so light and airy and it's exactly what we have got". Vinnie Price and Matt Stonehouse from KabSav Projects



“

It's an incredible home to watch a storm roll in from, the whole sky puts on a show, and given the elevated position you feel immersed in it.

were engaged based on their solid track record for producing exceptionally unexpected homes, including previous successful team collaboration, the Two Angle House. From Kabsav's perspective, "We wake up each morning looking for that next challenge, obviously being Three Angles this had that challenge".

The main entry sets the tone for the home and was intentionally sunken into the hillside. When one descends to the front door the entry to the home opens up to a stunning reveal of a timber-framed view across Jullul Bay. The warmth of blackbutt timber plays with the textural nature of concrete throughout and a feature cantilevered steel staircase carries you up to the main living spaces and the most elevated vantage point over the bay that the site had to offer.

Indeed the language of unexpected but intentional angles has been woven throughout the inspiration of the house. An angular handrail is recessed into a concrete wall, stair treads, and insitu concrete benchtops taper and flare and a triangular clerestory skylight is a statement in the open living area.

The outstanding quality of this home is the exceptional use of natural light. The spaces change throughout the day as the sun moves from the kitchen and study in the east across the living areas to a stunning westerly sunset over the private deck off the master bedroom in the evening. Nearly every space is animated by the constantly changing canvases of the three carefully framed views. "It's an incredible home to watch a storm roll in from, the whole sky puts on a show, and given the elevated position you feel immersed in it," says Megowan. "The living spaces are intentionally warm and robust, they're active spaces to entertain in, engage in and wear in with coastal life while the master suite takes on a

softer, quieter and more luxurious character, designed as spaces to retreat to and reflect in."

Jo and Colin are are thrilled with how the team worked together and felt involved throughout. A key part of this success was how they proactively researched every material and product that Megowan Architectural put forward which meant decisions were confidently made, and that work was coordinated and installed efficiently by Kabsav. "It is fantastic to work with a client that is open and receptive to new ideas and are engaged with every step" says Megowan.

"When it comes down to it, this forever home had to do more than just hit the brief and budget, it had to frame and magnify the lifestyle that the site so clearly offered" says Megowan. "So to us, this Three Angle House is a true success and certainly a project that we were very proud to be a part of."

www.m-a.com.au





About Novellini UK

Novellini UK is the British branch of Novellini Group

The most important shower enclosure manufactured in **Italy**. A vast range, extremely high quality and probably the most versatile in the market – anything is possible in terms of scale and design. Throughout the world Novellini creates **inspiring bathrooms** that appeal to individuals at home, via our merchant partners. Working alongside architects and designers, we create beautiful and functional bathrooms that complement the home, helping to create tranquil spaces promoting Well-being within the living environment.



Based in the beautiful market town of **St Albans**, Hertfordshire, we have a small but well stocked **Showroom** with multiple displays of enclosures, trays, baths and steam cabins. In order not to be disappointed please book in advance of your visit making sure we have the product you require on display.

Supported by vast **stocks** at our warehouse in Birmingham and serviced by experienced staff ready to support your needs.

All our products are maintained by our **qualified service engineers** and supported by parts readily available from stock.

Our products are: available **nationwide** through our merchant partners and retailers. Please use our store locator link on our website to find your nearest dealer or call us **directly** for more **information** on:

01727 229 922

www.novellini.co.uk



Discover our 2020 collections



Novellini UK offers a full range of bathroom products; including bespoke shower enclosures, wet-rooms, steam rooms, spa baths, furniture and much more.

All our products are designed and manufactured in Italy ensuring quality and availability. We have an extensive showroom facility at our HQ in Italy to support specifications and technical needs.

Products available **from stock** nationwide via our merchant partners. Why not visit our website or contact us directly for more details on our products and services.



A UNIQUE SERVICE

INTCERAM: ONE OF THE UK'S LEADING TILE DISTRIBUTORS

Founded in 1998 as a tile agency, IntCeram has evolved with the changing times and demands of the tile industry. With a head office and showroom along with a 38,000sq. ft warehouse in Leeds and a showroom in West London, IntCeram is one of the UK's leading tile distributors and offers a unique service.

IntCeram exclusively represents four factories offering different portfolios and price bands to give an extensive offer. Super Ceramica in Spain offers extremely competitively priced wall & floor tiles while Yurtbay Seramik, the family owned Turkish factory who are celebrating their 25th anniversary this year, has a broad and UK orientated product catalogue offering formats from 100 x 100mm through to 600 x 1200mm porcelain.

The most recent addition is the well know Roca brand which has a vast portfolio which includes 130 x 130mm through to 1200 x 2400mm x 7mm. Incepa, the Brazilian arm of Roca is also included in IntCeram's extensive product portfolio.

The Leeds and London showrooms offer a relaxed environment for customers to visit and make product selections, in addition, IntCeram have an experienced national sales team covering the

“

The Leeds and London showrooms offer a relaxed environment for customers to visit and make product selections

UK and Ireland which is backed up by a knowledgeable support team based in both showrooms.

IntCeram's customer base includes owner managed retail stores, national retail chains, property developers and architects. IntCeram pride themselves with a can do attitude where no project is too small or large for them to fulfil.

Offering a range of distribution services to suit individual customer needs, which include direct container shipments from the factories through to pallet and individual box pick from the Leeds warehouse which sets IntCeram apart from its competitors.

With the current challenging times for the retail and construction industry, IntCeram believe it has a service and portfolio to meet its client's needs to fulfil all requirements.



Maiolica Blue Steel 11x25cm from Roca



Legend Anthracite for Roca

Invisible Marble Book Match

Polished & Rectified
60x120cm

IN STOCK



Etna Rust

45x90cm
featuring *Devonstone Silver*
33x33cm on the floor

IN STOCK



Marble Nouveau

Glazed Porcelain
120cm x 120cm x 6mm

IN STOCK



FOR FURTHER INFORMATION PLEASE CONTACT:



Showroom/Office:

Rebecca
Tel: 01132 350 340
rebecca@intceram.com

For an appointment:

Simon Woodbridge
Mob: 07857 699166
simon@intceram.com

Paul Wright
Mob: 07710 030409
paul@intceram.com

Wayne Titley
Mob: 07710 030409
wayne@intceram.com

Manuela Profetto
Tel: 0208 747 3585
manuela@intceram.com

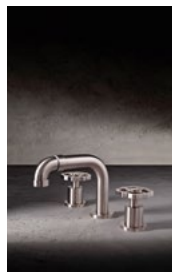
VISIT OUR WEBSITE INTCERAM.COM

GRAFF®'S NEW VINTAGE COLLECTION AVAILABLE IN ARRAY OF STUNNING FINISHES

GRAFF®, manufacturer of contemporary precision-engineered kitchen and bath products, presents its latest collection – Vintage – in the Brushed Nickel finish. The collection emulates the best of the industrial design paradigm, perfectly suited to outfit metropolitan environments known for their loft style.

The Vintage Collection draws inspiration from the design of classic fire hose nozzles, pairing a modern spout with bold handles. Each element, from the rounded brim at the spout's top to the undulating handles complete with carefully designed cut outs, resembles the traditional forms of the fire house featured in the historic Chicago Fire Department logo.

The Vintage Collection enriches bathroom suites through its elevated design. GRAFF's G+Design Studio honed-in on the collection's handle design to create a beautiful, practical, and ergonomic solution that facilitates easy use. The collection offers a choice of circular or linear lever handles (with a knurled accent for added allure) for deck-mounted, wall-mounted or freestanding installations. The two-hole and single-lever faucets feature an internal progressive cartridge that makes it possible to regulate water temperature while maintaining constant pressure. This system reduces hot water waste as a result. The progressive cartridge offers the possibility for a cleaner



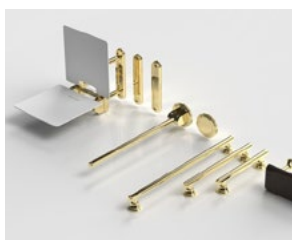
and more engaging design: the traditional cap is not necessary for the rotation of the handle; the tap develops into a unique silhouette, without the conventional cut on the back of the body.

The Vintage Collection is offered in nineteen contemporary finishes: Polished Chrome, Polished Nickel, Brushed Nickel, Steelnox® Satin Nickel, Unfinished Brass, Unfinished Brushed Brass, Architectural White, Architectural Black®, Matte Black, Onyx PVD, OR'osa PVD, Olive Bronze, Vintage Brushed Brass, Polished Brass PVD and Brushed Brass PVD, Gunmetal, Gunmetal Distressed, 24K Gold and 24K Brushed Gold. For this new series, the handles are available with a two-tone finish crafted with black accents: Chrome with Black, Polished Nickel with Black and the striking combination featuring Brushed Gold with Black.

For more information about GRAFF, visit www.graff-designs.com or www.facebook.com/grafffaucets

ACCESSIBLE DESIGN WITH THE KIRKMAN COLLECTION FROM FITZROY OF LONDON

Market leaders in providing accessible bathroom products for luxury hospitality and commercial spaces across the UK and around the globe, Fitzroy of London is paving the way with its user-friendly WCs, accessories and other fittings for all.



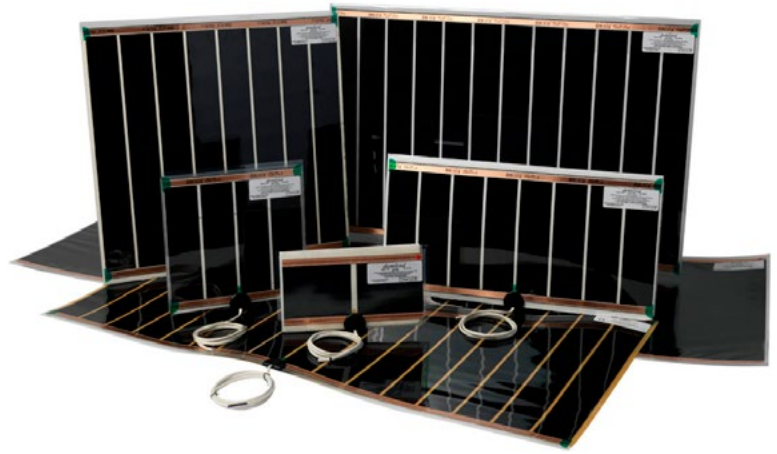
Designed in-house by Fitzroy of London's most skilled product designers, the stunning Kirkman collection provides a range of high quality bathroom accessories available in 30 different finishes. Inspired by the grace and glamour of the Art Deco period of the 1920s and 1930s, this collection presents a highly distinctive collection of standard and accessible bathroom accessories. Defined lines, enhanced geometric shapes and intricate details all add an overall classic aesthetic with contemporary overtones. The wenge wood detailing and white corian material, when paired with black or white ceramic accessories, create a stylish, stunning aesthetic.

For added subtlety, the grab bars and other disabled fittings can easily and safely be demounted and replaced with stylish blanking caps, providing a full level of flexibility in the bathroom.

For further information visit www.fitzroyoflondon.com

acquabella





Demista® The hidden Luxury

The Luxury items that first catch your eye in the bathroom could be the gold taps, the amazing rain shower, the marble tiles or the creative lighting. But the hidden luxury that every bathroom or En-suite cannot do without is the heated mirror pad.

The unobtrusive product from demista, ensures your bathroom mirror remains steam free at all times.

Often the first choice for designers, architects, interior designers and specifiers, demista has become the must have part of any bathroom or En-suite, as the system is probably the simplest and most adaptable item available around the world via demista's distributors.

Since the idea of the demista mirror heat pad was conceived steamed up mirrors have become a thing of the past in luxury hotels, prestigious housing and apartment developments around the world, and now being used in domestic new builds and renovation projects as a must have item because once the pad has been installed it saves time and money, as you do not need to keep cleaning your mirror with cleaning products.

With over 400 sizes available in various voltages means the heat pad can be installed anywhere in the bathroom or En-suite, even on cabinet doors and vanity units. Demista has become the generic name for heated mirror pads, but to avoid imitations, look for the demista trademark on the product, all of demista's heat pads are completely manufactured in the UK and carry a 10-year warranty.



Safety, ease of installation, minimal energy consumption, quality, reliability, full technical advice and service are the key ingredients for our customers, with our pads fully approved for bathroom use to European and international standards, which meets all the requirements both in the UK and around the world.

Prestige projects such as The Ritz in Paris, The Royal Atlantis in Dubai, The Crosby Street Hotel in New York, The Sky View hotel and residences in Dubai, W Hotel Ibiza, The Crown Plaza in St Petersburg, Burj Al Arab and other luxury hotels and homes in India, Australia, Egypt, Barbados and Malaysia can be found in Demista's portfolio.



BRIGHTON COLLEGE

A NEW IDEA OF EDUCATIONAL SPACE BOLSTERING INTERACTION AND EXCHANGE

The School of Science and Sports at Brighton College defies the conventional character of educational buildings – one of endless empty hallways and imposed silence – and instead combines the two departments to create a vibrant building with lively spaces where activities are not necessarily dictated by a school timetable. Observing that processes of learning take place outside as much as inside of the classroom, the design articulates a new idea of educational space bolstering interaction and exchange.

Why isolate the department of Science from the department of Sports? Instead, the two are merged into one linear volume, situated at the edge of the playing field. Primary sporting spaces are on level with the field, and the sports hall opens directly onto it. The Science department, which include classrooms, laboratories and a green house, spans over the sporting spaces like a skeletal bridge.



“

Stimulating social communications between the students was central in the concept: generous and open break-out space outside of the classrooms create room for informal interaction and private studying



The façades are inspired in part by the regular rhythm of the terraced housing opposite the new building. The rooftop provides a sweeping view of the North Sea.

Stimulating social communications between the students was central in the concept: generous and open break-out space outside of the classrooms create room for informal interaction and private studying. Level shifts, grand staircases and glass visually connect the activities taking place in both departments and trigger unexpected exchanges between different disciplines. Individual components of the building are exposed to each other: an indoor running track on the ground floor is visible from upper levels, classrooms have floor to ceiling windows, even fume hoods in the chemistry classrooms are made transparent – enabling people walking down the hallway to witness ongoing experiments.

OMA was awarded the project after a competition organized in 2013, when Brighton College needed to expand the Science School in terms of number of labs, and wanted a state-of-the-art sporting facility to foster talent and physical wellbeing.





In the original competition brief the Sports Center and Science Department were presented as two separate projects. After a revised brief in 2013, and a second competition phase in 2014, planning approval was acquired in 2015 and construction started in 2017. The project was realized with a total construction budget of £36,700,000.

Established in 1845, Brighton College is a private, co-ed boarding and day school in Brighton, England, and over the years has cemented its reputation as one of Britain's leading schools. The campus is comprised of two areas: a historical quadrangle, composed of Grade II listed buildings designed by Sir Gilbert Scott and Sir Thomas Jackson in the 19th century; and the playing field lined with buildings from the 1970s and 1980s, the site of the new building.

www.oma.com



EARTHBORN DOUBLES SILICATE COLOURS

Exterior masonry is probably the toughest test of all for a paint. It needs to be durable and weatherproof, as well as good looking and not all masonry paints were born equal. Ecopro Silicate Masonry Paint is a highly durable, breathable and weather resistant mineral paint, which is also virtually VOC and toxin free.

Earthborn believes its Ecopro Silicate Masonry System is the most advanced masonry paint available and in response to a growing demand, it is increasing the colours available from 24 to 48.

The system comprises a primer and paint, which together form a chemical bond with the underlying mineral substrate. The result is a very hard wearing, water and weather resistant barrier, yet it is highly breathable, which prevents moisture damage within walls.

Now, both the primer and all of the 48 paint colours are available in 100ml tester pots, so the whole system can be tested on site.

The new colour card and tester pots can be ordered from the Earthborn website.

www.earthbornpaints.co.uk



The lime rendered walls and stone window sills of this exterior courtyard feature Ecopro Silicate Masonry Paint.



HR PROF THE ECO-FRIENDLY FIRE RETARDANT

- Water based - does not leach
- Allows wood to breathe naturally
- Internal/External application
- Colourless - Odourless
- EN 13501 - 1
- Non Toxic - No Solvents
- BS 476 part 6 & BS 476 part 7
- Euro-class B-s1-d0 and C-s1-d0
- BM TRADA ISO 9001 Certificate
- Meets the **highest** EU standards



Classification Reports and Certificates for HR Prof: Pine, Spruce, Scotch/Siberian Larch, Western Red Cedar, Oak, Plywood & More

ALSO FOR WOOD PROTECTION: Fire Retardant UK One Coat Interior

A clear, colourless treatment for Euroclass B s2 d0 and Class O in a one coat application on porous wood, porous-faced plywood and porous wood based boards.

Fire Retardant UK Top Coat Sealer Interior Option

For protection against dirt, UV, and splinter resistant surface - a wipe-able sealer for application over Interior One Coat. In Clear or Wood-Stain - Matt or Satin finish



0800 7833 228

[e sales@fireretardantuk.com](mailto:sales@fireretardantuk.com)

[w www.fireretardantuk.com](http://www.fireretardantuk.com)

DULUX TRADE BECOMES FIRST MAJOR MANUFACTURER TO LAUNCH RECYCLED PAINT IN PARTNERSHIP WITH VEOLIA UK

As part of its ongoing commitment to reducing the impact of paint on the environment, experts at Dulux Trade with Veolia have created a ground-breaking matt emulsion made from 35 percent recycled paint.

The market leaders have developed Evolve, a revolutionary product made from the leftovers of other people's paint tins, in a bid to reduce the amount of paint wasted and going into landfill.

To create Dulux Trade Evolve, the paint manufacturer has partnered with resource management experts Veolia, to extract unused white paint from tins at its recycling centres.

In doing so, Dulux Trade has reduced the carbon footprint of each litre of Evolve paint produced by more than 10 percent.



Download video: <https://we.tl/t-tq5EVKngZF>



Rubio® Invisible Protector

Rubio® Invisible Protector is a plant-based wood protection that preserves the natural look and feel of your wood. The original surface gets a durable protection with an invisible finish. You can use Rubio® Invisible Protector on almost all wood types and it also preserves the natural look and feel of darker wood types.

And last but certainly not least, Rubio® Invisible Protector is based on a revolutionary plant-based resin.

At Rubio Monocoat, thinking green comes naturally. That's why Rubio® Invisible Protector is the perfect example of our sustainable entrepreneurship and vision to lower our environmental footprint. By using a revolutionary technology based on plant renewable materials, Rubio® Invisible Protector contributes to Rubio's EcoConscious story'!

- 100% invisible
- Natural look and feel
- Excellent UV protection
- Non-yellowing
- Plant-based resin
- Can be applied on all wood types

- Durable protection
- Water-based
- Scratch-resistant
- 1 component
- Mark resistant
- Easy to apply on brushed and sanded wood

**New
Product!**



Plant-based **PROTECTION THAT**
PRESERVES THE *natural look* **OF WOOD**

Rubio[®] **MONOCOAT**
YOUR PARTNER IN WOOD PROTECTION

7A Vanguard Way, Battlefield Enterprise Park, Shrewsbury, SY1 3TG, +44 (0) 1827 59 041
WWW.RUBIOMONOCOAT.CO.UK



'WINDOW AND FACADE ACOUSTICS'

BY WOJCIECH BROZYNA - MD OF ALUPROF UK

Most of us will be working from home at this time and communicating through meeting apps in order to progress what business we can. It is at these times we notice the sensitivities of the microphones on our devices and hear the sounds that we filter out during our normal home life. When specifiers design facades for new or refurbished properties in our towns and cities, there are a number of factors to put into the design mix and acoustics are becoming crucial both in workplace and residential properties.

Different types of noise can raise stress levels in the body, releasing a number of different stress hormones and, as the amount of stress hormones in the body increases, the heart rate, blood pressure and blood sugar levels increase. Excessive levels of these stress hormones in the body are harmful, and should the noise be sustained, or repeated day after day, this exposure will be seriously affecting health and wellbeing of building occupants.

Cities are becoming noisier with increasing traffic and in many



building locations close to railway lines, noisy pubs, clubs, noisy neighbours and/or flight paths. There are street designs which include special street furniture and planting to help reduce airborne noise but eventually, the noise will try to penetrate the building structure through the building facade.

Windows or areas of glazing are the most susceptible parts of the facade as they are generally the 'lightest' of materials used. Sound attenuation is best achieved by utilising unbroken 'mass' of material, such as a brick wall. The greater the mass, the greater the sound attenuation.

Depending on the time of day, noise levels of road traffic can vary between 45-70+ decibels and this is just over the sound level that is seen to be 'healthy'.

Old, draughty single glazed windows with poor or non-existent weather seals are the poorest performing windows when it comes to sound attenuation. Even the smallest of gaps which allows a flow of air through the window will allow noise to penetrate the facade.



So, the more airtight the window, the greater the sound reduction. Typically a well sealed single glazed window will offer a -30dB reduction in sound transmission, or what is known as 'attenuation'. In busy built up areas single glazing is now seen as inadequate.

For every 10dB reduction in the noise level achieved, the human ear perceives this as halving the volume.

Glazing plays the biggest part in sound attenuation, double glazing helps, especially if the glass used is of differing thickness. Most materials at a given thickness will 'resonate' at certain frequencies and allow some of those frequencies through, using a different thickness ensures what passes through one will not pass through the other. A well designed triple glazed unit with differing air spaces and glass thickness, will perform even better. Acoustic laminates used in laminated glass are specially designed to minimise sound transmission and a well designed unit can achieve up to -45dB sound attenuation.

The use of triple seals further improve sound reduction and high thermal performance systems with wide high performance centre seals with further attenuate sound around a high performance glazed unit.

Regarding specification, Building Regulations, Part E, 'Resistance to the passage of sound' should be consulted as well as a number of standards that are currently in place. Depending on the building there are also specific and differing requirements laid down for the likes schools, hospitals and offices, to name a few. Some company chains, such as Premier Inn, have their own acoustic requirements. When specifying BREEAM rated projects, there are points that can also be awarded for compliance in certain circumstances.

Sound attenuation is also a little more complex in application and specifiers need to be aware that a change in window size can have an impact on 'expected' attenuation levels. Furthermore, attenuation is not linear, transmission of frequencies may mean that at one level of frequency, in a given window specification, sound is well attenuated whilst at another frequency, sound attenuation will be less. Knowing what frequencies to specify too is crucial in getting the installation best specified for the client.

Whilst ensuring airtight window systems to increase sound attenuation, these can be provided with 'glazed-in' or 'in-frame' acoustic ventilators which consist of baffles and acoustic absorbing materials to allow ventilation but with attenuated noise transmission. Acoustic ventilators may not offer the level of attenuation required and this is where an alternative mechanical ventilation provision should be considered. Depending of the configuration and specification of the design of windows or curtain wall required, our Aluprof design team can assist in the best options to be specified.

Where prime windows need to remain in place, for example in listed facades, then the option to install a secondary window system will offer a good solution. Using spacings of 100mm to 150mm between these windows including the inside reveal lined with acoustic absorbing material will offer very high levels of sound attenuation.

Flanking sound transmission is quite a talking point at the moment in the industry. On almost every acoustic assessment when there is a continuous curtain wall, sound can travel through the facade to other floors, the reason for this is that the box will allow sound to travel unless it is broken per floor. Provisions can be incorporated such as an acoustic insert, multiple transoms can also be used to allow the sound to dissipate. Careful design is required to allow movement of the curtain wall system whilst ensuring that sound does not travel between compartments or floors of the building. Curtain wall also has the ability to transmit impact sound across compartments as well as airborne sound and selecting suitable methods of construction will improve attenuation.

Whilst there is no one fix for all conditions, our design team in London and at our head office here in Altrincham can offer advice on how to tackle sound attenuation in both new and existing buildings. With one of the widest ranges of aluminium systems available in the UK we can offer you a bespoke design to meet both thermal and sound attenuation requirements.

Since setting up the Aluprof Project Office at the Business Design Centre in London, the company has rapidly grown their specification influence in the UK with their high performance architectural aluminium systems. Further expansion of the companies headquarters in Altrincham now provides specifiers with meeting facilities and an extensive showroom of commercial systems to view. With overseas growth across Europe spreading into the Middle East and firm roots already in the East of the USA, the company is becoming a global player in facade supply. Further information is available on the companies website at aluprof.co.uk or direct from their UK office in Altrincham on 0161 941 4005.

www.aluprof.co.uk
ekantor@aluprof.co.uk
 0161 941 4005



PICTURE PERFECT SEA VIEW AND OCEANS OF SANDY BEACH

ALUFOLDDIRECT HELPS TO CREATE BESPOKE COASTAL HOLIDAY HOME IN WALES

A £500,000 project to build a unique holiday home within the Snowdonia National Park, features aluminium glazing from award-winning AluFoldDirect.

An old chalet-style property, which sat on a tired plot of land in North Wales, was demolished to make way for the unique new build. It comes complete with two sets of aluminium bifold doors and an impressive aluminium double-height corner window from AluFoldDirect - perfectly positioned to soak up the coastal landscape and views across the dunes.

At the rear of the three-bedroom house near Harlech, two aluminium residential doors were also manufactured by AluFoldDirect as part of the bespoke architectural design to build a home with real wow factor.

Plans to create the 'upside down' property, which has all the living space on the first floor so the owners can admire the rugged sandy coastline, started before 2015.

Chris Shuker, of Chris Shuker Building Contractors, handled the project after being headhunted by the family who snapped up the unique piece of land a few years ago. Architects drew up a stunning design for the waterfront property, which incorporated the use of stylish and innovative aluminium glazing, and Chris approached AluFoldDirect to discuss the build.

Delivery was fast and efficient once the order was received by AluFoldDirect and Chris said no-one else could come close to the price.

“

We worked together and the end result is stunning. The aluminium bifold doors work beautifully and enable the family to embrace the outdoors and soak up all those wonderful sunsets.

Chris says: "This project had been on hold for quite some time because the owners specifically asked me to build the house for them and their two grown-up daughters. I had other commitments to deal with first, but I was always enthusiastic.

"It was agreed that as soon as I could fit the build into my schedule, I would make a start on the house, which will be used as a holiday home by the family. It was a really exciting project for me as it meant I could use my vast experience to create this truly amazing home.

"From the moment I opened talks with AluFoldDirect, I felt confident that the company would be perfect for this project. Of course, we had all the drawings from the architect, so it was easy for me to share them with AluFoldDirect and they responded enthusiastically.

"We worked together and the end result is stunning. The aluminium bifold doors work beautifully and enable the family to embrace the outdoors and soak up all those wonderful sunsets.

"The double-height corner window opened up internal space and created natural light throughout the property, but especially at the rear.

"It was of paramount importance that we celebrated exactly where the house was positioned because, believe me, it is absolute perfection."

Chris Shuker Building Contractors is a leading building contractor in Shropshire and Powys. The company specialises in full house developments, business developments and does exceptional work in disabled adaptations.

The family-run business has been trading for more than 20 years and prides itself on managing contracts efficiently, working to budget and tight timescales. It is the first time it has teamed with AluFoldDirect – but links are now strong.

Chris says: "The job, albeit a huge one, was no exception to the rule. I personally worked on this contract and I treated it like it was my own property. We kept to deadlines and the build was fast-moving at times.

"In fact, if this house ever came on the market, I'd buy it tomorrow – that's how much I loved it. I could really picture myself sitting at the window, looking out at the ever-changing coastal picture that you wish you could frame forever."

www.alufolddirect.co.uk



Defining spaces in architectural aluminium

THERMAL™

Windows || Doors || Curtain Walling || Brise Soleil || Louvres

Belaton House Student Accommodation, Bournemouth





Burlington House Luxury Apartments, Manchester

Support

Technical design input

Thermal modelling

Free air calculations

Security analysis

Online BIM models

Secured By Design

Environmental

Window Energy Rating software (WER)

BREEAM guidance

BRE Green Guide A+ rated products

Life cycle analysis

Sustainable products

Responsible sourcing

Earl Grey Building, Dundee



metaltechnology.com

COMMITTED TO EXCELLENCE

DEFINING SPACES THROUGH ARCHITECTURAL GLAZING SOLUTIONS

Since 1985, Metal Technology has been defining spaces through its architectural glazing solutions and has grown to become one of the UK and Ireland's leading designers and suppliers of bespoke aluminium window, door, curtain wall and solar shading systems for commercial and residential applications.

Committed to excellence in all aspects of sustainable product design, customer service and technical support, the company has become a trusted partner of fabricators, developers, contractors and architects.

Metal Technology's product portfolio encompasses over 30 window, door, curtain walling, brise soleil and louvre systems. Its Thermally Enhanced (Hi+) portfolio offers the designer a wide and diverse choice of profiles that provide structural integrity, weather performance, thermal enhancement and security.

TECHNICAL SUPPORT

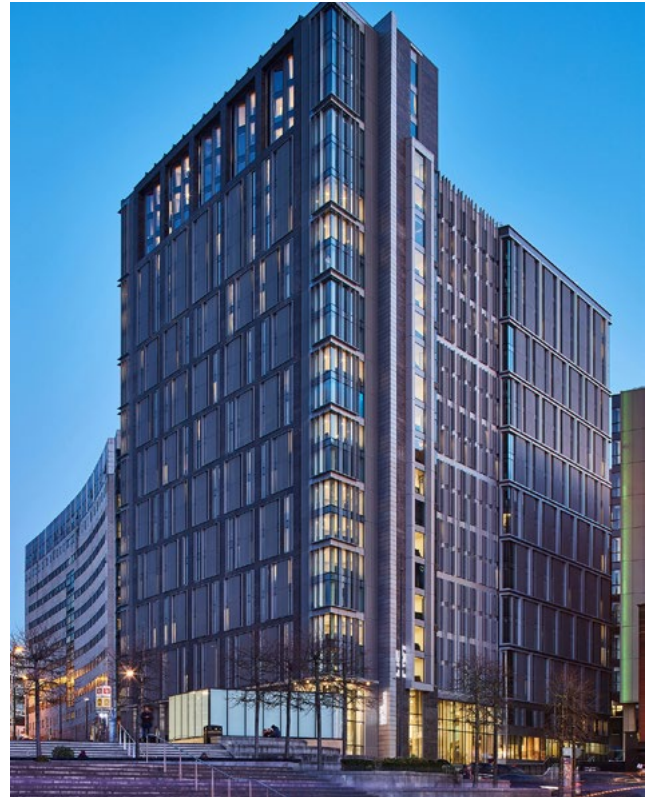
Metal Technology offers a comprehensive design and specification service to architects, developers and main contractors through a team of architectural advisors. Tailored specifications can be provided online with NBS standards, supported with CAD details and performance data as well as BIM family models for integration into construction drawings.

EDUCATION

Metal Technology has vast experience of providing fenestration solutions for over a 1000 universities, colleges and schools throughout the UK. In recent years, student accommodation has become one of the fastest growing segments of the construction industry and is an area where the exceptional properties of the various Metal Technology systems come to the fore, delivering quality, functionality, performance, security and stunning aesthetics. Recently completed student accommodation projects include the award winning Horizon Heights development in Liverpool, Belaton House and Bailey Point in Bournemouth and 123 York St in Belfast.

RETAIL

From leading supermarkets and shopping centres to high spec showrooms, Metal Technology's products have provided designers with the flexibility to combine aesthetic architectural statements with value engineered practicality, performance and durability.



LEISURE

Metal Technology has supplied its high-performance systems to major new hotels across the UK and Ireland with involvement in the Grand Central Hotel, AC Hotel by Marriott, the Maldron and Hampton by Hilton as well as Jurys. The company has also completed major leisure projects such as Aintree Racecourse and the British Golf Museum in St. Andrews.

HEALTHCARE

From Glasgow's Victoria and Southern General Hospitals to its Maryhill Health Centre, Metal Technology has applied its expertise in close collaboration with designers to deliver financially economic yet technically robust solutions.

COMMERCIAL

Contracted for many commercial schemes in the UK, Metal Technology recently supplied their architectural glazing systems for a number of recently completed, award-winning developments: CDE Global headquarters in Cookstown, the prestigious 64,000 sq ft Victoria Gate commercial office building in Woking and the Aurora building in Bristol.

RESIDENTIAL

Signature apartment blocks in London, Belfast and Manchester are excellent examples of how Metal Technology's windows, curtain walling, sliding and bifold doors meet the aesthetic, security and thermal performance requirements of any building.

www.metaltechnology.com



SIMONSWERK UK ANNOUNCE A NEW LONDON SHOWROOM

SIMONSWERK UK are delighted to announce we will be opening a London showroom at 45 Great Sutton Street in the heart of Clerkenwell. Conveniently located right in the heart of London's design district.



The UK is a key market for the SIMONSWERK Group with London being known for its trendsetting community of architects and designers who work on global projects.

The new London showroom has been created to provide our customers, architects, and designers with the opportunity to experience our products first-hand. The goal is to showcase our products and inspire and share our expertise, as well as to offer a meeting place to discuss projects, product demonstrations and CPD presentations. Ideally located just a short walk from Farringdon tube station. The showroom is nestled in the heart of a thriving design community near trendy restaurants and bars.

SIMONSWERK share the showroom with WILKHANN a leading German manufacturer of office furniture. The showroom is split over two levels where the entire TECTUS Concealed hinge system and the TRITECH solid brass product range will be available to see.

The showroom will be launched in time for the Clerkenwell Design week, the UK's leading design festival from 14th to 16th July 2020. Visitors to the showroom will be able to see all the latest developments in hinge technology.

E: sales@simonswerk.co.uk

T: 0121 522 2848

W: www.simonswerk.co.uk

**CLERKENWELL
DESIGN WEEK**

14-16 JULY 2020

SIMONSWERK
HINGE SYSTEMS

TECTUS® Glass Minimalist hardware components for glass doors



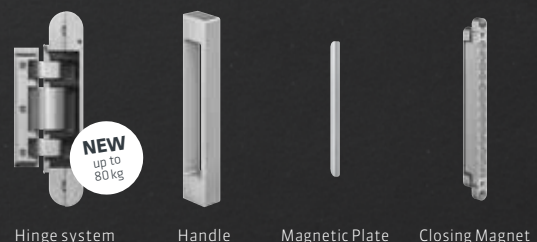
Visit us!

**NEW
SHOWROOM**

45 Great Sutton Street,
London, EC1V 0DE



TECTUS® Glass – Product overview



Hinge system

Handle

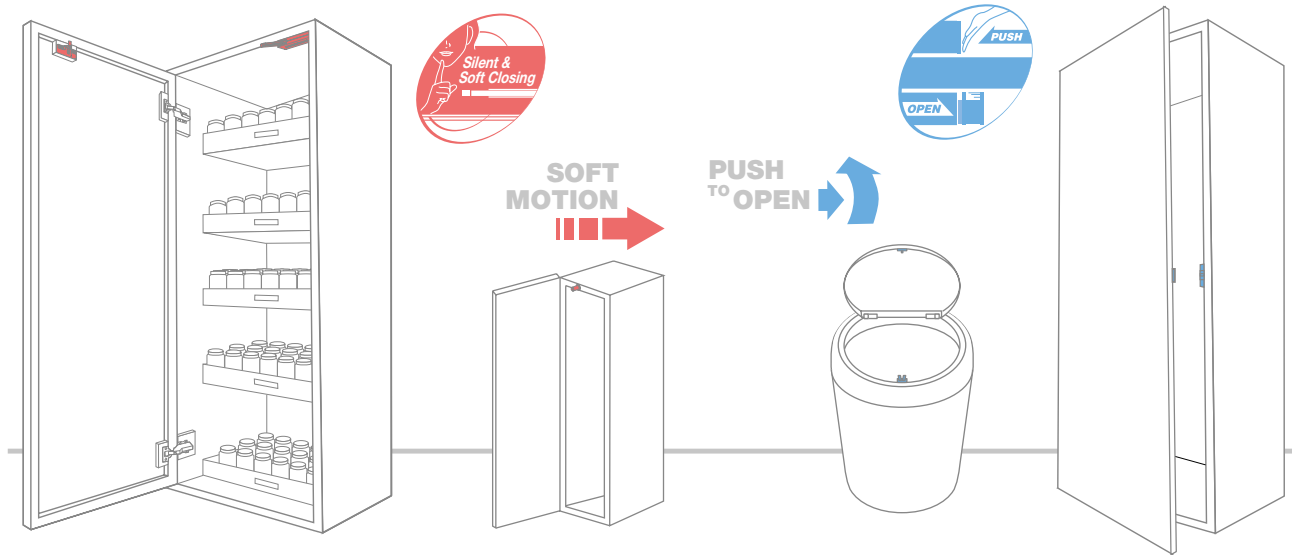
Magnetic Plate

Closing Magnet

Find out more: www.tectus-glass.com

Sugatsune Door Mechanisms.

More Choice With a Premium Touch



When it comes to door mechanisms, hinges tend to attract most of the attention. And not without good reason - after all, they provide the essential functionality which, by definition, makes a door a door, i.e. the ability to open and close it.

At Sugatsune, our ambition has long been to establish ourselves as global leaders in door motion technology and the components that deliver it. We have therefore invested heavily in driving forward innovation in hinge design and engineering, adding features like controlled close, free stop, open assist and wide-angle lateral opening to our standard hinge mechanism stable.

However, we have also always maintained the importance of looking beyond hinges alone. Whatever innovations we have developed in hinge technology, whatever premium features we have added, we have also looked to make the functionality available through other components.

It's all about our commitment to increasing the options available to our customers, and giving them as many choices as possible.

Take soft close mechanisms, for example. Ever since our UDH torque hinge brought the concept of soft close toilet lids to Europe, Sugatsune's patented rotary damper technology has been widely regarded as being a trailblazer in soft close solutions for furniture, interior and architectural components. Our HG and Olympia 360 damper hinge ranges - the latter fitted with our award-winning Lapcon adjustable damper - continue to be best sellers.

Door dampers represent a simple, convenient way to add premium soft close functionality to existing doors.

Avoiding slamming, lowering the risk of damage or injury, the intrinsic pleasure of smooth, controlled closing motion - for cabinets, partitions and entrance ways.

Sugatsune manufactures dampers for doors of all weights and sizes, and for use with different types of hinge. For small to medium sized cabinets, our range starts with the DC-90, a straightforward damper suitable for timber and glass doors weighing up to 4kg, and designed to be paired with most conventional hinge types. But for cabinets with concealed hinges installed, we offer three products - the DC-4000, DI-4000 and DL-4000. Based on a spring damper mechanism, these provide three different fitting options for doors weighing between 3 and 5kg.

At the other end of the scale when it comes to heavy doors it is not possible to incorporate soft-close into the hinge and standard door dampers are not able to support the additional weight. At Sugatsune we feel that large doors deserve discreet hardware with the same durable soft close functionality: The DC-200 is suitable for full length cabinet, wardrobe and partition doors weighing anything up to 40kg. Like our 4000 series products, the DC-200 is designed specifically to be paired with concealed hinges, in this case the heavy duty J95 range for large cabinet doors.

Finally, we have also extended the damper catch concept beyond cabinets to embrace interior doors, too. Our LDD door damper range was originally conceived as an update of the door closer/stay, replacing the arm attachment between door and frame with a late catch mechanism which significantly reduced the profile of our unit. This allowed us to first develop the LDD-V, a fully concealed premium soft close solution for cabinet doors.

More recently, we have extended this innovative design to the LDD-V100, a door damper capable of holding ultra-heavy interior doors weighing up to 100kg. When paired with our HES concealed hinges, the LDD-V100 forms part of a unique solution - impeccable soft close control for interior doors with no components visible in the closed position.

Pristine appearance

The LDD range underlines how our design values reach beyond straightforward functionality. We understand that, to our customers in the interior design and architecture trade, in furniture manufacture and in industrial equipment supply, appearances matter. In maximising the choices available to our customers, we are therefore always thinking about how we can create components that look as great as they work.

Push-to-open is a concept that delivers simplicity combined with a minimalist contemporary aesthetic. Our so-called 'touch latches' require no handle, with a light push to the door itself all that is required to open and close. While there is nothing wrong with handles and pulls per se

- and we manufacture and sell an extensive range of them, with a heavy emphasis on premium quality design - not needing a handle at all again adds to the options available.

We supply touch latches in two types, magnetic and non-magnetic. Our magnetic types provide strong, durable hold, passing up to 50,000 open/close cycle tests. The ML-ZN80, a heavy-duty version designed for use on full length cabinet doors, is the only product available on the market that can provide push-to-open functionality for the kind of heavyweight doors found on walk-in closets and concealed partitions.

Our non-magnetic touch latches use a simple catch mechanism on the counter plate to hold a closed door in place. Lighter in weight and requiring a smaller push force to activate than magnetic equivalents, they are ideal for small to medium sized cabinets. The ESN-195 mini touch latch, which weighs just over 2g, provides a strong retaining force that belies its size and is ideal for use on small flaps such as bin lids where durable hold is still required.

Premium function married with flawless form - that's the Sugatsune way.



FURNITURE, ARCHITECTURAL, MARINE AND INDUSTRIAL HARDWARE

Unit 635, Wharfedale Road, Winnersh Triangle, Wokingham, RG41 5TP

Tel: 01189 272 955 Email: sales@sugatsune.co.uk

www.sugatsune.co.uk

COMAR LAUNCH THE ECO LT WINDOW & DOOR SYSTEMS

Comar profiles have thicker walls providing extra strength and durability for the British market, ensuring that Comar performs. Designed specifically for the British Market and offering a truly British engineered solution.

Comar ECO LT sightlines have been minimised whilst not sacrificing product performance. Large sizes come as standard from the same range of profiles.

5P.i ECO LT - ALUMINIUM WINDOW SYSTEM

Comar 5P.i ECO LT Aluminium Casement Window System has both internally and externally glazed options. With the resurgence of slim aluminium high security externally beaded with sloped beads minimises the sight lines and maximises daylight. The square chamfered profiles are a distinctive feature of this system, keeping the square look of a truly aluminium solution.

For Ovolo feature the ECO range seamlessly suites in: No matter the situation Comar 5P.i ECO LT delivers.



7P.i ECO LT - ALUMINIUM DOOR SYSTEM

Comar 7P.i ECO LT Aluminium Door System has both inward and outward opening options in single or double door combinations. There are two thresholds available high weather performance and low-rise for seamless balcony terrace integration. Comar 7P.i ECO LT door has been designed to provide high performance solutions for today's specification demands. Utilising Comar's trademark P.i. (Polyamide Insulation) thermal break technology, it delivers superior thermal performance with an aesthetic edge.

Aesthetics come from its slim 55mm profiles, seamlessly integrating with the Comar 5P.i ECO LT casement window system. Comar 7P.i ECO LT has been tested to BS 6375 which ensures the door performs well against the rigours of the British weather, reducing draughts and providing excellent weather proofing.

Security concerns are alleviated with the Comar 7P.i ECO LT door exceeding the requirements of PAS 24:2016.

For further information about Comar Architectural Aluminium Systems, please visit www.comar-alu.co.uk, call 020 8685 9685 or email projects@parksidgroup.co.uk

UPHOLDING MILL TRADITION WHILST IMPROVING THERMAL PERFORMANCE

In the 11th century, The Grade II* Listed Blue Mills in Witham, Essex was recorded in Domesday as the water mill at Benton Hall, a subsidiary manor of Blunts in Witham. The original 16th century cottage is attached to a Georgian house (at the front), a sequence of early Victorian extensions, and a later Victorian house in 1872 (at the rear).

It was important to the owners that an effective resolution would complement the existing architecture of the building. They reached out to Selectaglaze for advice on the best possible treatments for their primary windows; a mixture of timber sash windows, fixed lights and inward or outward opening casements. The quirks and irregularities around some of the bay windows meant that a considered approach was required.

Once the owners were happy with the bespoke solutions suggested, they went ahead with the install. Despite the property being Listed, Maldon District Council confirmed that no formal Listed Building Consent was required for the works.

A total of 22 windows have been treated thus far using a number of window styles: fixed light, vertical sliding and side-hung casements. Two windows in the wood-panelled room were



treated with Selectaglaze's heritage Series 47 hinged casement system which was able to sit tight behind the wooden shutters, allowing their continued operation. The aluminium profiles were coloured in a woodgrain finish which colour matched the existing surrounds perfectly.

With the key issue being heat retention, the owners are delighted with their decision to use Selectaglaze. As the secondary glazing has proved to significantly reduced heat loss, along with high performance seals eliminating draughts, more windows are due to be treated at Blue Mills later this year.

Selectaglaze is the leading specialist in secondary glazing, established in 1966 and Royal Warrant Holder since 2004.

For further information, please contact Selectaglaze on 01727 837271/e mail: enquiries@selectaglaze.co.uk or visit: www.selectaglaze.co.uk

HIGH QUALITY TIMBER WINDOWS AND DOORS

The Sash Window Workshop specialise in traditional timber windows and doors, offering a replacement and repair service across London and Southern England, with a supply only service nationwide.

The Sash Window Workshop have worked on a range of projects, from flats in Central London to large country mansions and prestigious properties, such as Buckingham Palace and the Royal Academy of Music. The company also has extensive experience working in Conservation Areas and on listed buildings.

They believe that windows and doors are an important feature in any home and that they must be as energy efficient as possible, while also being in keeping with the architectural style of the building.

As every window and door in a period property is individual, The Sash Window Workshop pay extraordinary attention to detail when manufacturing new timber windows and doors in their Berkshire workshops. The company pride themselves on providing high quality, bespoke solutions to meet their clients' requirements.

For installation and repair work, the company's installation team are all expert craftsmen, with extensive experience working on



timber windows and doors in period properties. The installers understand that your client's home should be treated with the utmost care and respect. They will therefore seek to minimise disruption and keep the work area clean, tidy and safe.

The Sash Window Workshop are also FSC® Certified, FENSA registered, members of the Safecontractor scheme and Which? Trusted Traders, with most of their work coming from previous customers and recommendations

To obtain a quotation, or arrange a tour of the workshop, contact The Sash Window Workshop on: 01344 868 668 or info@sashwindow.com. You can also visit their website: www.sashwindow.com.



High Quality, Traditional Timber Windows and Doors

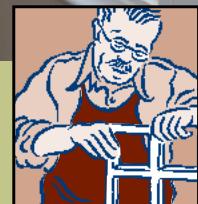
Providing Tailor Made Solutions For Your Project. Period Property Experts.

Supply Only, Supply and Install, Draught Proofing and Overhaul.



01344 868 668

www.sashwindow.com



**THE SASH
WINDOW
WORKSHOP**

TOUCH

IRONMONGERY LTD

www.atouchofbrass.co.uk

210 Fulham Road, Chelsea London SW10 9PJ

THE PERFECT TOUCH

**Touch Ironmongery is one of London's leading Architectural Ironmongers
Established in October 1982**

Originally called "A Touch of Brass", the firm changed their name in 2003 in reaction to slowly advancing market changes in architectural ironmongery which is no longer supplied solely in brass, and to also reflect the broader range of product and finishes that they sell.

In fact today, Touch can supply a wide range of finishes including Brass, Satin Brass, Polished Chrome, Polished Nickel, Satin Nickel, Copper, Bronze – solid and plated, BMA, Antique Brass, Black, Pewter, Ceramic, Leather, Stainless Steel, Satin Stainless Steel, Gun Metal, and the list keeps growing. Whatever finish you require, Touch can help you get the right look.

Touch occupy their recently refurbished showroom at 210 Fulham Road, Chelsea, where they display a vast range of their 5,000 products. With a customer base including Interior Designers, Builders and Individuals who are interested in the quality end of the Ironmongery market, Touch mainly supply to residential premises but hotel and office properties also contribute to their vast clientele.

The company also have a healthy export market to all corners of the world, namely the Middle East, Europe and the Americas. Touch's owner and founder, Bill Benham, has 38 years' experience in the ironmongery trade, as do his colleagues Jim Haselup and Alan Blanchard. Saleem Qureshi is the newest member of our team and has 10 years' experience, meaning their knowledge is unrivalled in this industry.

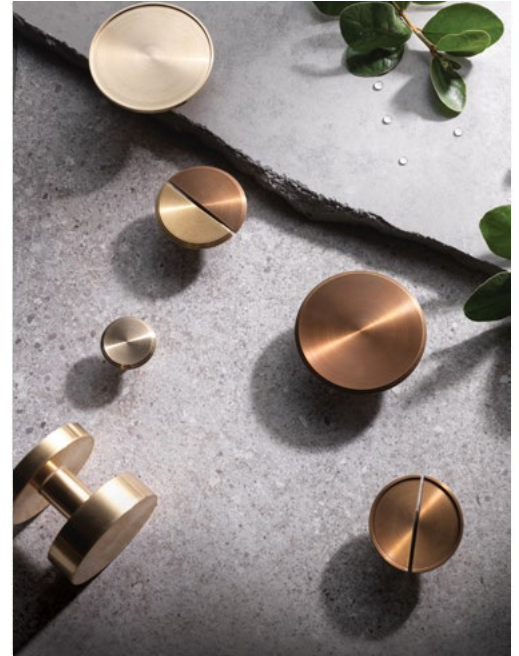
The range of products supplied by Touch date from circa 1640 French (Louise XIV) and cover all subsequent periods (Georgian, Edwardian & Victorian), art deco and contemporary pieces also make up the product ranges. In addition, Touch showcases the very best of British manufacturing; the best ranges are still produced in the Midlands by craftsmen in factories dating back 200 years or more.

Touch Ironmongery have recently become suppliers for **Designer Doorware (Australia)** who have beautiful products with a cutting edge design Metal, Wood and concrete. We also have the exclusive rights to sell the **Olaria (Barcelona)** range in the UK.

Olaria make all our bespoke products, they have incredible levels of workmanship. Touch also sell European manufactured goods which is considered to be of a very good quality and in recent years they have introduced some of the far eastern made products, albeit in a limited range but cost effective. With trends continuously evolving new innovative products are constantly under development. Touch understand that keeping up with the fashion-shifts is imperative in order to provide every customer with the best solution for their requirements.

Ironmongery can be a difficult and complicated aspect of a building project, as a result Touch aim to take this awkward aspect and make it user friendly and clear to understand by offering an on-site service where they carry out a detailed door by door, window by window, room by room Ironmongery schedule, highlighting all requirements and identifying any items that can be refurbished. Refurbishment is a large part of the business; Touch will undertake complete ironmongery refurbishment projects, and can restore old paint covered door furniture to their former glory, looking as new, at a fraction of the cost to replace.

**For more information about Touch Ironmongery or to arrange a
showroom visit please call 0207 351 2255 or alternatively
visit www.atouchofbrass.co.uk**



BRITISH & EUROPEAN MANUFACTURERS SUPPLYING THE FINEST QUALITY IRONMONGERY

Touch combine traditional skills with modern manufacturing techniques to produce the most beautiful, quality fittings, built to stand the test of time.

As well as specialist bespoke items, Touch supply over 1000 products, available in 23 different finishes to furnish high end residential and commercial properties, royal palaces, government houses, historic castles and stately homes.

Olaria, available from Touch Ironmongery

www.atouchofbrass.co.uk & www.olariabarcelona.com



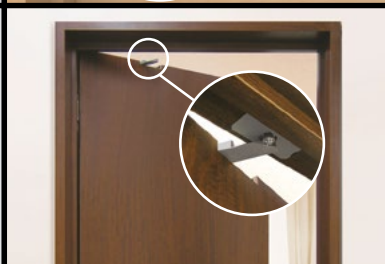
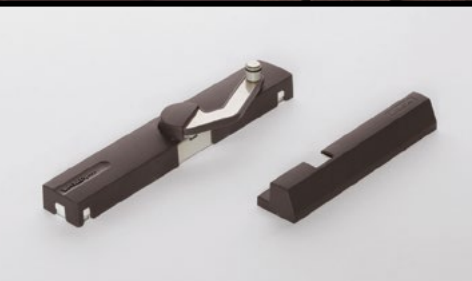
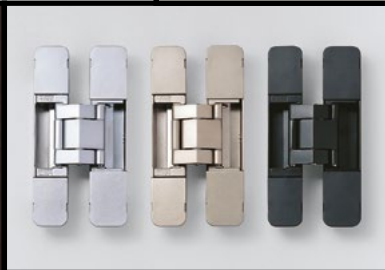
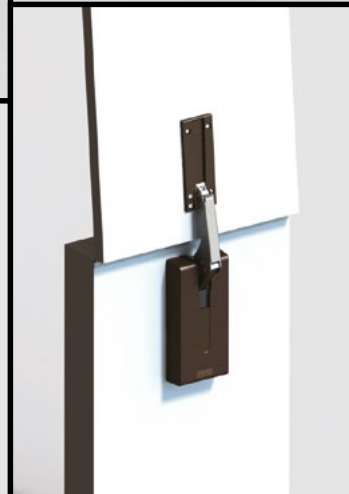
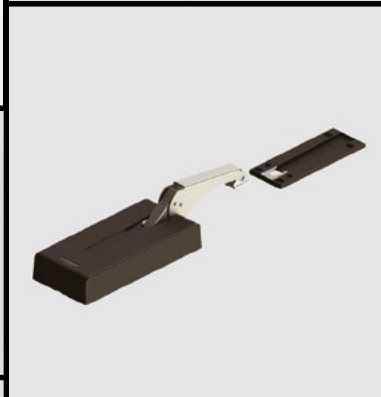
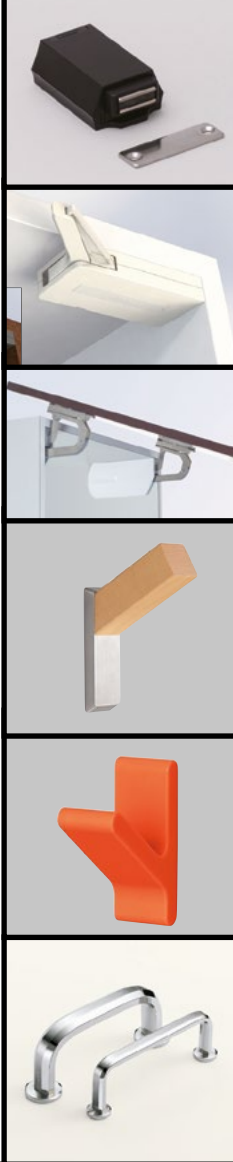


Celebrating 90 years of quality and innovation in 2020

SOLUTIONS FROM AN INDUSTRY LEADER

SUGATSUNE continues to be a leading source for unique, high quality hardware products. Architects, builders, designers and OEM's continue to depend on our SUGATSUNE quality and craftsmanship. You'll see and feel the difference in every product, from catches and latches to our patented dampening mechanisms.

www.sugatsune.co.uk

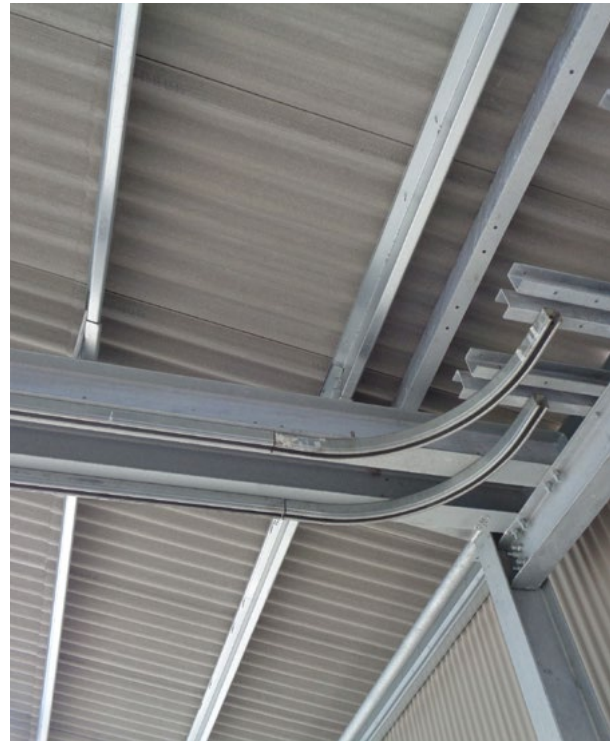


P C HENDERSON'S TANGENT ROUND THE CORNER SPECIFIED FOR UK'S LONGEST HERITAGE RAILWAY

P C Henderson has recently been specified for a new build project at the UK's longest heritage railway - Ffestiniog and Welsh Highland Railway. As the oldest independent railway in the world, Ffestiniog and Welsh Highland Railway is a major tourist attraction - taking passengers on a scenic 40 mile journey through the hills between Blaenau Ffestiniog, Porthmadog harbour and Caernarfon.


Boston Lodge Works is the railway's main workshop and base for the daily train service. With over 55 carriages in service, the station required a storage facility which could house up to 30 carriages whilst also providing shelter for train cleaning and preparation which could be done away from the public eye. The project brief included the need for a robust entrance solution which could provide easy accessibility to the shed.

Ian Hartill, Project Engineer at Ffestiniog Railway, commented "The original brief detailed the use of traditional outward opening hinge doors which we have used in previous projects. However, due to the coastal location of the building and the possibility of strong winds, this option was not possible. As a more suitable alternative, we



found P C Henderson's Tangent Round the Corner which could comfortably hold the large custom made doors."


www.pchenderson.com



**THE ALL NEW
VIER PREMIUM
DESIGNER RANGE**

Made from Grade 304 stainless steel, the new Vier Premium designer range combines high-quality manufacturing techniques with a series of luxuriously designed levers on an all new slim-line magnetic sprung rose for a sleek aesthetic appeal.

Call: 01228 672900
Email: sales@zoo-hardware.co.uk
Visit: www.vierdesign.co.uk

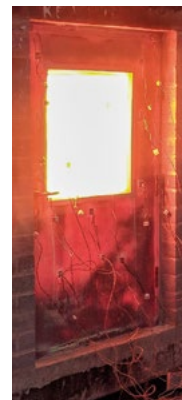
Vier Premium is part of Zoo Hardware Ltd. 



FIRE DOOR HARDWARE

As important as the door

A fire door is an essential part of a building's passive fire protection system. A critical component of every fire door is the hardware on it.



At ZEROplus we have been independently fire testing door hardware for over 20 years, to be able today to offer an extensive range of tested products.

Seals
Hinges
Locks
Euro Cylinders
Lever Handles
Door Closers
Letter Plates

Door Stays
Vision Frames
Louvers
Door Viewers
Flush Bolts
Panic & Emergency
Exit Hardware

FIND OUT MORE AT: WWW.ZEROPLUS.CO.UK
ZERO SEAL SYSTEMS LTD: 01785 282910



BUILDING D

CIRCULAR EXAMPLE PROJECT ON OWN PREMISES CEPEZED

Building D(emountable) is a modern, sustainable and fully demountable structure on the site of a historic, monumental building complex in the center of Dutch city Delft. This site is owned by cepezed, an agency with expertise in the development, the design and the realization of buildings.

CREATIVE CLUSTER

cepezed acquired the complex with former laboratories from Delft University of Technology in 2012. It transformed the monumental buildings into a creative cluster with housing for various companies in the creative sector, including the office itself. However, the only non-monumental building on site was in poor condition. It has now made way for the new construction of Building D(emountable). Again, this is a full-blown own development of cepezed and it is intended for companies in the knowledge-intensive creative industry. It houses the app and website developer, 9to5 software and a game developer Triumph Studios.

CIRCULAR PROTOTYPE

The Netherlands has set itself the goal of rendering all construction activities fully circular by 2050, while cepezed has a long reputation for modular and demountable design and construction. Moreover, director Menno Rubbens of developer cepezed projects is part of the national program committee to achieve the national circularity goals. Partly for those reasons, Building D(emountable) also had to become an example project on cepezed's own grounds. The way in which the office approaches circular construction and the way in which one can make buildings that can later donate to other projects or even be reused elsewhere in their entirety.

LIGHTWEIGHT, FLEXIBLE AND GAS-FREE

Building D(emountable) has exactly the same footprint as the existing building that was no longer good and was demolished. It measures 11 by 21.5 meters and has four floors of about 200



square meters of lettable floor area each. In addition to being demountable and remountable, the structure is also super lightweight: the use of materials is kept to an absolute minimum. The building is also completely flexible in its arrangement, has no gas connection and is equipped with heat recovery. The ground floor is made of poured concrete, but otherwise, all building components are modular and dry mounted. Supreme simplicity has been an important principle in the design.

STEEL, WOOD, AND GLASS

Building part D(emountable) consists of a rationally optimized building kit with a steel, prefabricated and extremely slender main supporting structure. The structural floors and roof are made of lightweight wooden Laminated Veneer Lumber (LVL) elements that are also prefabricated. These have a compact height and the installations are integrated within them. The ribs of the LVL elements remain fully visible and are part of the building's aesthetics. The screed is biobased and consists of gravel-like granules in a cardboard honeycomb structure with gypsum fiberboards on top. The entire screed is dry and easily removable again. The PVC finishing floor is made of partly recycled PVC. The building has no window frames: the double-layer insulating glass is mounted directly on the steel structure. For that reason, the steel construction is provided with welded screw profiles. The steel builder had to comply with the very limited tolerances of

the façade builder, which was no small task. The facade is largely transparent, which makes for strong sightlines and relations between the inner and outer world. Vertical slat strips can be opened for natural ventilation. The down-to-earth, modern building strikingly and interestingly contrasts with the historic existing buildings. This also renders it illustrative for the way cepezed approaches the combination of new and historic construction.

CLIMATE

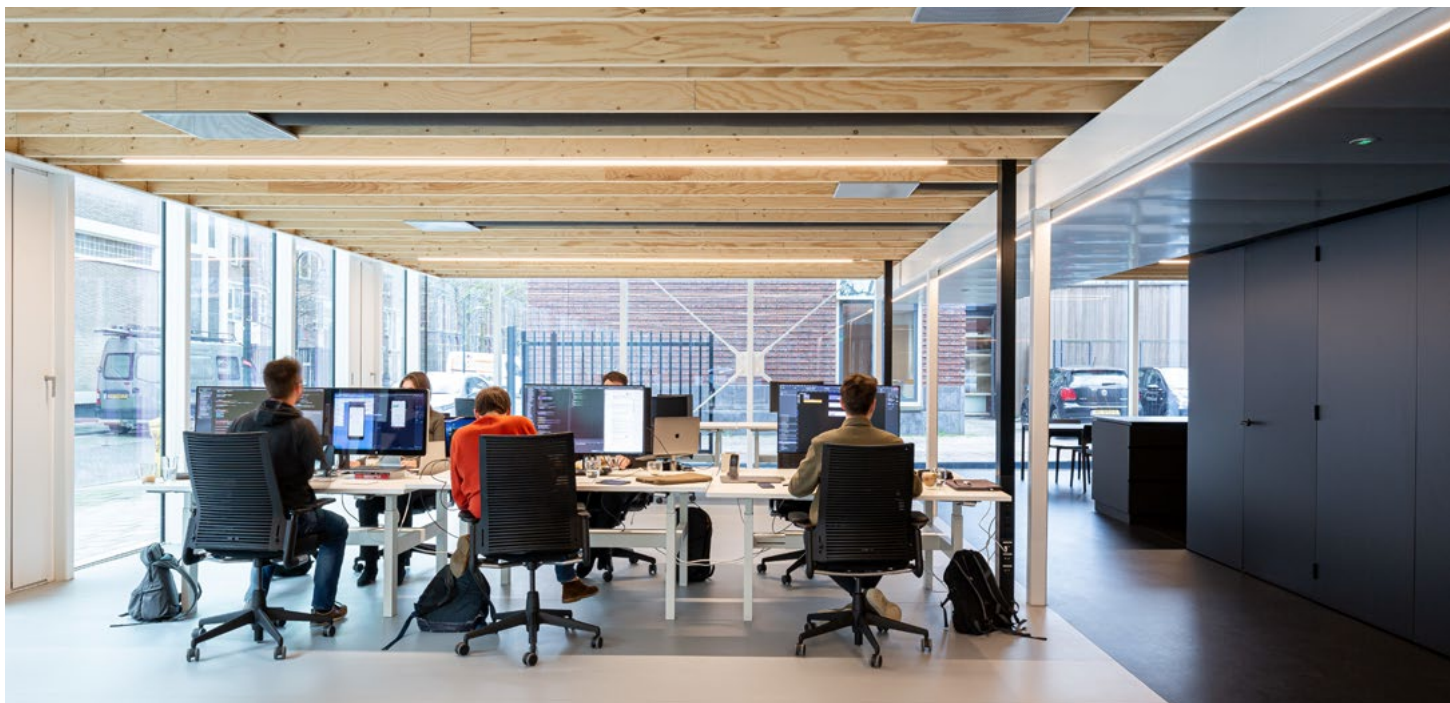
The entire building functions as one large fire compartment. As a result, little material was required for fire-resistant measures; only the stairwell has a fire-resistant partition. All climate control works on air. On each floor, air conditioners that also take care of heating are integrated in the ceiling. In addition, the building is equipped with a heat exchanger. Roller blinds provide sun and light protection.

INTEGRAL PROCESS

Construction took place in an extremely short period: just over half a year. With the positioning of the elevator shaft, the building even topped out in an hour after the works started. The complete structure of steel skeleton and wooden floors was put together in three weeks. This was possible, among other things, because of an integrated process with thoughtful preparation and close, integrated cooperation between the various cepezed disciplines; from the project developers to the architecture and interior designers and of course the implementation coordinators. With short communication lines, all specialists are housed under one roof, which has not only improved the efficiency of the process, but also the level of coordination and thus the quality.

“

Building D(emountable) has exactly the same footprint as the existing building that was no longer good and was demolished





cepezedprojects developed, cepezed and cepezed interior designed and cepezedbouwteam coordinated the construction. There was a close collaboration between the designers and the construction coordinator throughout the complete process with key figures from the design also being part of the implementation team.

The cooperation with the external partners is also worth mentioning. With a lot of them, cepezed also often collaborates on other projects. As a result, all parties were already well attuned to each other. For example, the structural advice was provided by IMd and the advice in the fields of installations, building physics and fire safety was provided by Nelissen. The realization was tendered out to various parties such as Voortman, Metsä Wood, iFS, Kuijpers and Qbiq + Schelp Bouw & Interieur for respectively the steel construction, floors, facades, MEP/HAVAC and the fit-up package. This pragmatic approach meant that the implementing parties only had to concentrate on their own expertise. In terms of time, use of materials and financially, this has resulted in a high degree of efficiency.

EXAMPLE AT HOME

With circular projects such as the Temporary Courthouse in Amsterdam and restaurant The Green House in Utrecht, cepezed previously realized other projects completely designed for circularity. These garnered a lot of publicity and various prizes, such as the Amsterdam Architecture Prize and the public award of the Sustainable Building Awards. With Building Part d(emountable), cepezed now has a circular example of its own manufacture directly at home. Customers and partners only have to look out the window to see how cepezed shapes circularity.

TECHNICAL SHEET

Project: building d(emountable)

Project address: Nieuwelaan 72, Delft, Netherlands Client: Jan Pesman

Project development: cepezedprojects, Delft

Architect: architectenbureau cepezed, Delft

Interior design: cepezedinterieur, Delft

Structural engineering: IMd Raadgevende Ingenieurs, Rotterdam

Consultant mechanical & electrical engineering, consultant

building physics, sustainability, acoustics and fire safety Nelissen

ingenieursbureau, Eindhoven construction coordination:

cepezedbouwteam, Delft Contractor steel construction: Voortman

Steel Construction, rijssen

contractor electrical and mechanical installations: Kuijpers Utiliteit

Midden-Noord B.V., De Meern

Wood flooring: Metsä Wood / De Groot Vroomshoop

Contractor glass facades: iFS Building Systems, Waddinxveen

Contractor roof: Roof Protection, Arkel

Stairs: EeStairs, Barneveld

Contractor ceilings and custom interior walls: Schelp Bouw & Interieur, Eersel

Wall systems: Qbiq, Alphen aan de Rijn

Pantries: AS Projectinrichters, Poeldijk

Project duration: September 2016 – December 2019

Building area / plot area: 968 m² gfa / 242 m² Photography: Lucas van der Wee | cepezed

Drawings: architectenbureau cepezed

www.cepezed.com

Raised Access Flooring

Bonded Herringbone Timber Panels



www.bathgateflooring.co.uk
info@bathgateflooring.co.uk
 Tel: 01432 347700

BATHGATE

FLOORING

osmo

FREE SAMPLE! QUOTE:
POLYX2020
01296 481220

osmo
Polyx®-Oil
High Solid
For wooden floors and furniture
Clear - satin - for interior use
Natural oil / water based - non-solvent
Water resistant and easy to clean
Encourages healthy living

3032 Satin
Clear

OSMO POLYX®-OIL ORIGINAL
 HIGHEST QUALITY AND PROTECTION FOR WOOD
 MICROPOROUS | NATURAL | OIL-WAX BASED | DURABLE | HIGH COVERAGE

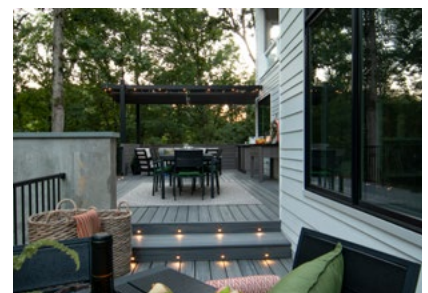
LEARN MORE: OSMOUK.COM CALL US: 01296 481220

TREX DECKING

Trex Company, the world's No 1 decking brand, offers a simple and easy way to build with green materials whilst not compromising on look and feel.

With high-definition wood grain patterns and rich, saturated

colours inspired by the outdoors, Trex composite decking looks natural and boasts a vibrancy that remains unchanged for years. Colour options range from deep earth tones to warm umbers, spicy reds and pristine greys.



Featuring a protective shell for superior defense against severe weather and heavy foot traffic, Trex deck boards will retain their good looks even after years of wet British winters and are guaranteed to look as good as new by the time summer comes around – year after year. Just an occasional sweep, and a clean with soap and water is all that is needed to ensure the beauty of a Trex deck for decades.

Trex decking is available locally through Arbordeck stores
www.arbordeck.co.uk/

Visit www.uk.trex.com for more information on Trex products.

HOMEOWNERS URGED TO FIND THE ENERGY TO SWITCH TO RENEWABLES AHEAD OF UK CLIMATE CHANGE TARGET

With climate change targets causing uncertainty for current heating methods, choosing a solution that works with any heat source will give customers peace of mind knowing that they are ready for anything and only have to buy once. Wet underfloor heating is a good first step to reducing a household's carbon footprint and is a great way to be more responsible with heating, and while the country is still deciding on the most cost-effective way to update millions of homes it is reassuring to know that products like Wundatherm will work with both current and future resources.

Wundatherm is future-proof and perfect to use with both existing boilers and future heat sources, and with home heating accounting for 21% of a home's carbon footprint, homeowners will need to stop using fossil fuels to heat their homes in favour of sustainable green energy heating in order for the UK to meet its global climate change commitments.

Wet underfloor heating is one of the only heating systems that runs efficiently with new low energy heat sources. It's already the first choice for many other countries, and has been shown to be 25% more efficient than radiators and costs 60% less to run than electric underfloor heating.



The Wundatherm underfloor heating system can be laid by any competent tradesmen including builders, carpenters and tilers and once installed only requires a plumber to commission the system and an electrician to fit the controls. It is also designed with a 'fit and forget' reputation that is reliable, durable and maintenance-free.

For further information on the Wundatherm underfloor heating system or a free estimate, call 0800 083 2677, email: plans@wundagroup.com or visit the website www.wundatrade.co.uk



BIG FOOT PROVIDES NON-PENETRATIVE SUPPORT SYSTEM FOR HAMPTON BY HILTON

Big Foot Systems has provided a complete non-penetrative support system for Hampton by Hilton in Ealing. The task was to provide support for a louvre screen, 2 AHUs, several VRV units, ductwork, cabling and pipework. The 87 linear metres of all-weather louvre screen provides a protected environment against wind loading alongside visual improvement to neighbouring buildings.

The design was carefully thought out by in house Engineers, coordinating the 12-sided layout with 3 entry points around; the building structure, a large lift overrun, falls & drainage and several rooftop vents. Detailed design analysis was carried out to ensure the project's specific technical considerations were met.

The team were able not only to maximise the allowable space on the inside for the plant support but also for services and access routes. The various banks of Daikin VRV units situated on the perimeter framework go together to provide unit support whilst acting as ballast to counterweight the louvre.

The original plans for this project were to penetrate the roof with H steels and add a secondary steel beam structure to support the plant and potentially the screen.



After attending site to review the requirements in more detail it was clear that Big Foot could offer a suitable alternative proposal to be installed directly onto the recently laid green/sedum roof. The contracting team on site found the benefit of using a Big Foot non-penetrative system was not only a saving in time and cost but also limited future risk to the roof surface for their client.

For further information on all products and services offered by Big Foot Systems email: enquiry@bigfootsupport.com or telephone 01323 844355.



J & P BALCON®

INSULATED STEEL BALCONY CONNECTION SYSTEM

Easy Balcony Positioning Tolerance.

Excellent Load Capacity.

Thermal Insulation Performance to Meet Part L.

- Designed for your specific balcony to concrete connection
- Cost-effective, high quality components
- Excellent thermal insulating properties
- Easy to set into position with no need to cut edge shutter
- High load performance with fast installation
- Very low deflection at the connection to the structure
- An approved LABC Registered Detail
- Quality management to BS EN 1090-1 and ISO 9001:215



Need a high-quality and cost-effective insulation system for your current project?

Contact us today to learn more, or visit our website at www.jp-uk.com

J&P Building Systems Limited

Thame Forty, Jane Morbey Road,
Thame, Oxfordshire OX9 3RR

01844 215 200

www.jp-uk.com

enquiries@jp-uk.com

J&P Building Systems Ltd. is a subsidiary of:

■ H-BAU Technik GmbH ■ JORDAHL GmbH



FREE HOT WATER ENERGY AUDIT FOR ALL HOSPITALS & MEDICAL CENTRES - COURTESY OF RINNAI

Rinnai is offering FREE audits for all hospitals and medical centres in order to maximise energy and financial efficiency in the delivery of hot water at the point of use. Maximising efficiencies can lead to fuel savings, alone, of up to 30% on current energy prices as the hot water is heated only when it is used - turn the tap off and the energy costs can stop immediately.

The audit, in close co-operation with the site, measures all data concerning use and presents a full and detailed report prepared by CIBSE recognised engineers. This is all free of any charge.

Rinnai is the world's leading manufacturer of continuous flow hot water systems a range of units that can be manifolded to supply, virtually, limitless temperature accurate water to a site of any size. It also means less space spent on plant rooms and no or little maintenance as all units are proven to be robust with extended working life and warranties to support this.

Rinnai's Sensei N Series water heating range offers a new and compact design with enhanced combustion that allows for easier and quicker installation - and gives high levels of operational performance.

All components in the range are designed and manufactured by Rinnai, and this ensures maximum quality and reliability from the world leader in commercial continuous flow water heating products and systems.

The Rinnai Sensei N Series is also the first ever continuous flow hot water heating unit manufactured with stainless steel heat exchangers to be available in the UK - this gives a greatly extended working life. Added to this is the Sensei N Series market leading extended warranties.

The advanced burner controls with the Sensei N Series models ensure that all the appliances are well ahead of the NOx requirements set within ErP. The current level of permissible NOx set by ErP is 56 mg/Kwh.

The Sensei N Series range have been third-party tested at 28 mg/Kwh making them one of the greenest water heating appliances available.

As the units do not incorporate storage their 'green credentials' are further recognised by BREEAM and score additional credits under the building regulations.

In answering the threat of Legionella proliferation - continuous flow technology is recognised as heavily reducing the risk of Legionella proliferation when compared to other types of hot water



delivery. The main reasons for this are that there is no storage, system turn over is regular and the area for debris is much lower than storage type systems.

The industry uptake of Rinnai's continuous flow heater systems is proven to be more energy efficient than conventional storage systems and are increasingly the experts' preferred method of hot water provision. Rinnai units easily cater for any size projects that need high volumes of water at intermittent or any times of day.

Rinnai manufactures over 2million water heaters every year and as such is at the forefront of creating unit cost advantages for installers. Competitively priced, the units offer all technological advances and innovations, all at a similar cost to lower specification competitor models.

Contact the company direct by telephone or email info@rinnaiuk.com for your FREE audit on hot water usage on your site.

For more information on the RINNAI product range visit www.rinnaiuk.com

BUSY YEAR AHEAD AS GAIA CELEBRATES BEING IN BUSINESS 30 YEARS

Gaia Underfloor Heating recently celebrated 30 years in business at their annual conference. Continuing to deliver their vision to provide professionally designed underfloor heating systems, manufactured to the highest European standards giving both the customer and home owner peace of mind that they've chosen the best.



With their wealth of knowledge and experience in the Underfloor Heating market they know how important it is to deliver a reliable solution that's delivered on time and to budget. And why at Gaia they have a dedicated team of Account managers providing a professional service from initial project stage through to project completion. Ranging from new build residential, commercial construction, self builds, care facilities, education and residential renovations.

With an inhouse team of designers who can offer specialist solutions to meet the needs of any project. The team use the latest in design technology and heat loss calculation software, full project specific CAD drawing, system schematics and technical support.

For further information on Gaia Underfloor Heating, please contact 01359 242 400, visit www.gaia.co.uk or email info@gaia.co.uk

NEOMITIS
Creating innovative solutions for ambient comfort

Finally enjoy control without effort!

myneo Fluid Curved
A concentration of technologies designed for your comfort and to decrease your energy consumption while making your life easier.

myneo Stat

Also available in white

SOON
Wireless version

3 years warranty
Can be remotely-controlled
Occupancy detection
Low energy consumption
PID technology

www.neomitis.com

4th Floor, Lincoln House, 300 High Holborn, London WC1V 7JH, UNITED KINGDOM
Tel: +44 (0) 2071 250 236 - Fax: +44 (0) 2071 250 267 - E-mail: contactuk@neomitis.com

80 New Kings Road
Fulham
London
SW6 4LT

RealFlame
England's Finest Fires

020 7731 5025
sales@realflame.co.uk
www.realflame.co.uk

- 45 Years of Industry Experience
- Comprehensive Fulham Based Showroom
- Full Bespoke Product Portfolio
- Collaborative Design with Interior Designers
- Building Regulation Assistance
- Complete Supply and Installation Service
- Working with British Based Suppliers
- Industry Leading Procurement Time Lines



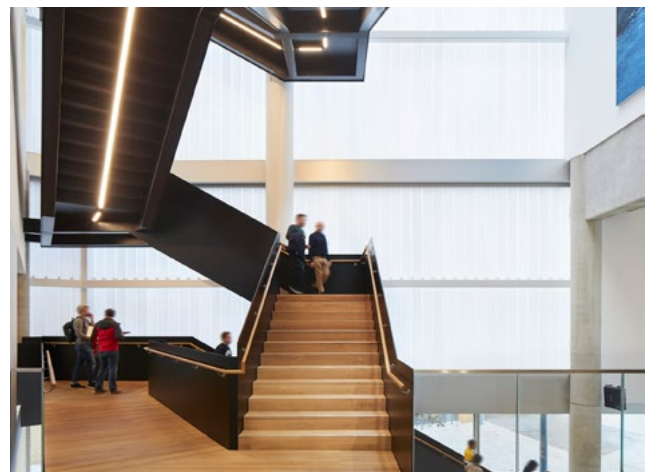


ENGLISH NATIONAL BALLET

A TRANSFORMATIONAL PROJECT FOR ENGLISH NATIONAL BALLET (ENB) WHO HAVE RELOCATED TO THIS PURPOSE BUILT 93,000 SQ FT 'DANCE FACTORY' IN LONDON CITY ISLAND BY BALLYMORE (PHASE ONE) AND ECOWORLD BALLYMORE (PHASE TWO)

Wrapped in distinctive, translucent white cladding, the new centre for dance provides world-class studio, costume, medical and production facilities. These include seven full-sized rehearsal studios, dedicated engagement and learning spaces, as well as English National Ballet School which is accommodated on the top two floors. In addition, the building includes offices for over 200 ENB staff.

The unique main production studio features a 10m x 16m stage space and a five-storey, 25m tall fly tower. The other facilities are arranged over three upper levels, and the building is topped with a green roof. Rehearsal studios are typically 15 x 15 x 15m and all include an external clear glazed viewing window to help welcome the outside in.



“

The translucent white cladding contrasts with the colourful surrounding buildings and allows passers-by to catch glimpses of the professional dancers as they rehearse



Commissioned in 2014, the brief was to design a creative space for making and dancing that would serve as a new focal point for ballet in London. The main challenge was providing the required extensive range of flexible, state-of-the-art facilities on a narrow site, with a comparatively challenging budget. This was achieved by creating something that is both pared-back and elegant, but also hard-working, with its character defined by a celebration of exposed raw materials such as concrete ceilings and translucent glass walls. The limited material palette and the use of standard, off the shelf, hardworking components has helped to ensure that the building met the budget.

The ground floor is designed as a lively circulation space that acts as the soul of the building, with a public café and exhibition space encouraging interaction between the school and the company. The building also houses spaces for back-of-house specialists such as technicians, set builders and costume ateliers to work, enabling the company to create costumes in-house for the first time.



The translucent white cladding contrasts with the colourful surrounding buildings and allows passers-by to catch glimpses of the professional dancers as they rehearse. This is achieved using 3,600sq m of Linit, a white translucent glass, which provides privacy whilst offering a hint of the dynamic movement in the studios.

The production studio can also be used for ENB's outreach programme with local schools and other stakeholders. It also gives ENB the ability to rent out spaces thus increasing the company's financial stability at a time of diminishing public funds.

The building transforms the way in which the organisation honours the original vision set out by founders Alicia Markova and Anton Dolin, whose aim was to take classical ballet of the highest quality to the widest possible audience. Supported by the Mayor of London's Good Growth Fund as well as the Arts Council England's Capital Programme, the new building facilitates ENB's new skills programme, Bridging Neighbourhoods - Growing Talent, as well as providing new jobs for the area.

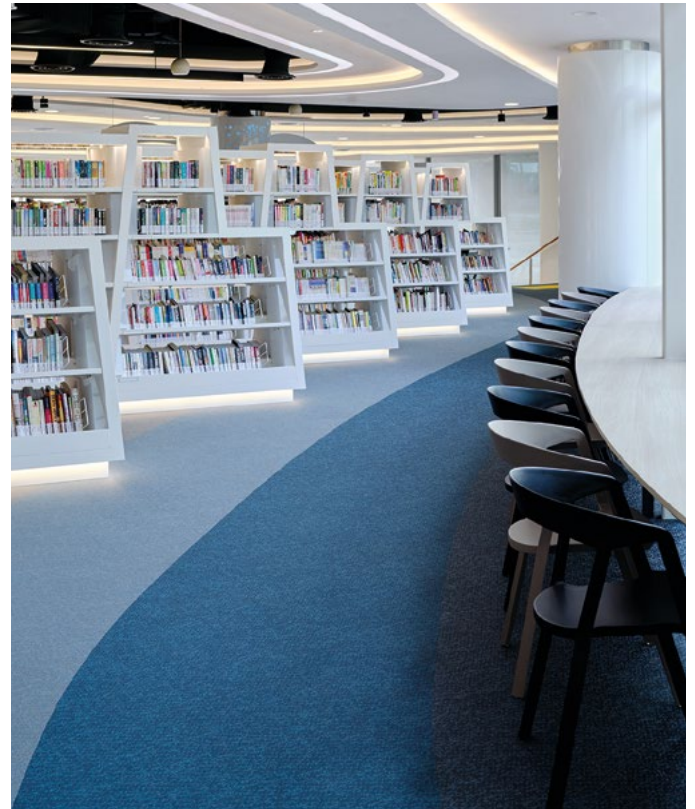
www.glennhowells.co.uk



COMBINING STYLE WITH SUSTAINABLE INNOVATION

High-quality flooring that looks good and lasts is what 2tec2 is all about. After years of research and development, the Belgian company launched this all-new product combining woven vinyl and fibreglass. This blend offers the best characteristics of hard surface flooring with the look and feel of textile floors. It's sustainable, easy to clean, hardwearing and waterproof while still looking fresh and elegant.

2tec2[®]
high tech flooring



References: Aurora, Pulsar, Orbital & Titan

If you're looking for the functional characteristics of hard surface flooring but would like a more elegant look, 2tec2 has what you need. The seamless tiles and rolls are available in numerous colours, shapes and sizes, allowing full personalisation for each purpose.

After years of research and development, 2tec2 was launched in 2005. Over the years, many renowned brands and architects discovered the wonderful qualities of 2tec2 flooring. Its look, functionalities and endless options for customisation quickly made it into the preferred flooring for contracted projects.

One of the more recent projects is the 'Library @ Harbourfront', an amazing library in the world's largest shopping centre near the waterfront in Singapore. Architect Zee Choing

was inspired by its seaside location, adding a maritime touch to the entire project. Using 2tec2, the floors have wave-like patterning, using colours to mark different sections and routes throughout the library. "2tec2 is a sustainable, high-quality and elegant flooring solution," Choing explains his choice. "It offered all the practical characteristics of a hard floor, while adding the look and feel of textile, combined with an enormous choice and options for customization. It was perfect for this project, allowing us to create an

intimate, cosy atmosphere while keeping it easy to maintain and ready to greet hundreds of visitors every day."

www.2tec2.com



NEWLY COMPLETED CONDOS BRING ZEN APPEAL TO HELL'S KITCHEN

LEMAY + ESCOBAR ARCHITECTURE & ODA TEAM UP ON CHARLIE WEST

Charlie West – Manhattan's only new ground-up construction residential development in Hell's Kitchen – is now complete. The striking 16-story condominium building, with exterior design by ODA Architects and interiors by the renowned Andres Escobar of Lemay + Escobar Architecture DPC, creates an urban oasis at 505 W. 43rd Street.

With a judicious separation into two distinct buildings creating an elegant courtyard, the design weaves in the steely characteristics of the neighborhood's past, combined with the luxury and modernism of present-day Hell's Kitchen. The brick façade integrates with the surrounding buildings, while articulation of the façade introduces a distinguishing sculptural element of depth and style.



“

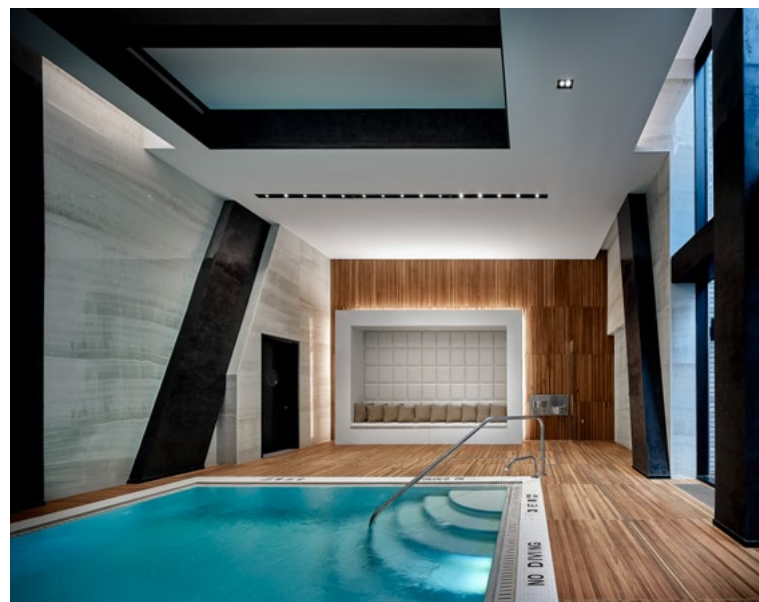
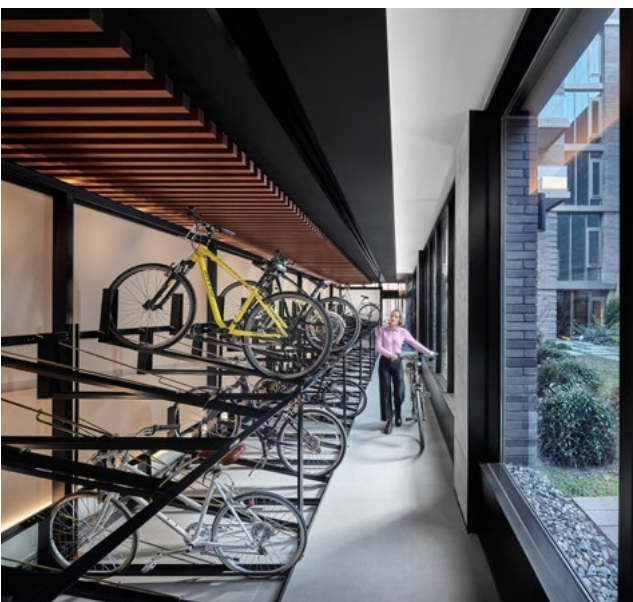
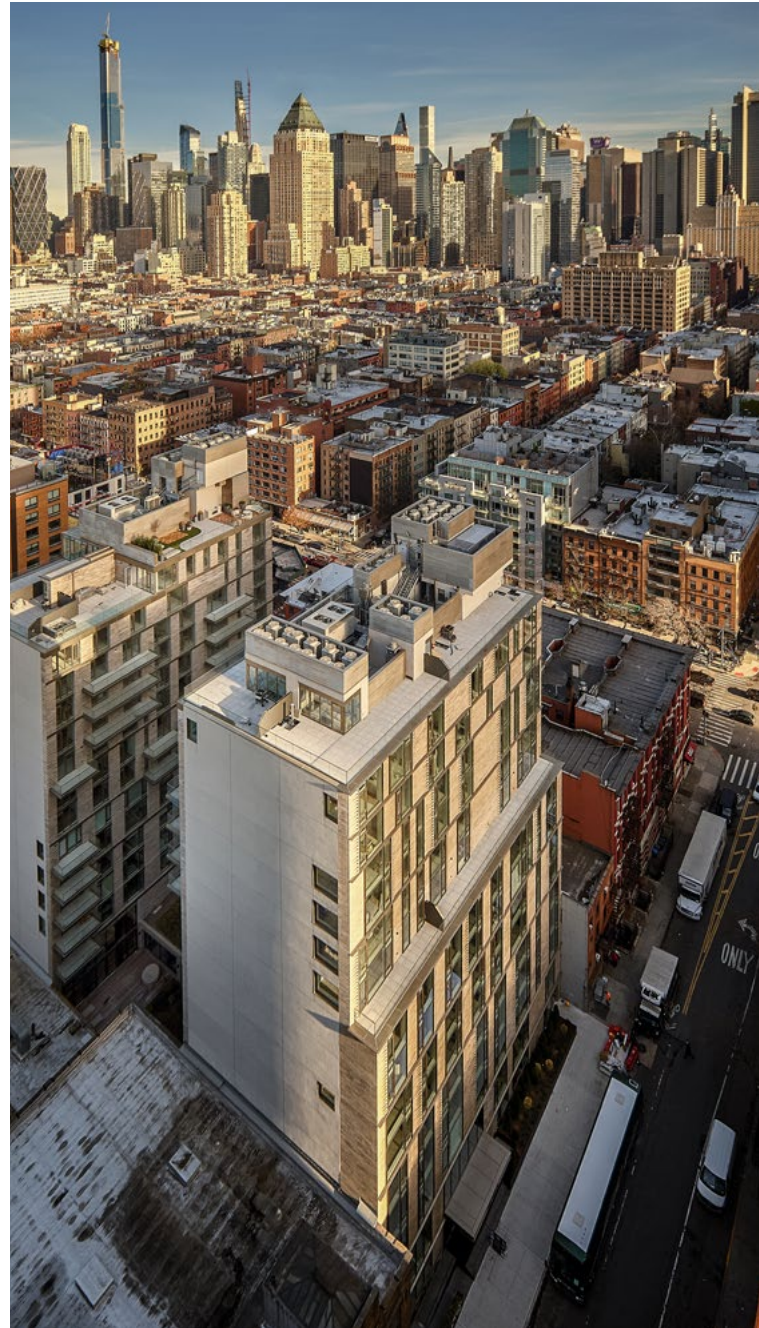
Quote goes here quote goes here Quote goes here quote goes here Quote goes here quote goes here



Upon arrival at Charlie West, the dramatic double-height hotel-style lobby draws one into the industrial chic-designed interior space that dually serves as a curated library and a private residential lounge, anchored by a grand fireplace. The welcoming area is framed by its distinctive diagonal beams, a structural necessity the designers maximized and made into a defining feature.

Escobar and his design team infused the neighborhood's DNA throughout Charlie West's spacious amenities and successfully curated an industrial yet modern and inviting interior design for the lounge, pool and gym, as well as the 120 residences, through the use of natural materials and opulent textures.

"The interiors at Charlie West transport you to another place and exude a relaxed vibe, with a very sophisticated palate. From the moment you step into the lounge-like lobby, with its sumptuous natural materials and dark urban tones, to the scenic pool with its serene spa-like feel, one could easily feel as though they are in a boutique hotel in Miami rather than a luxury condominium in Hell's Kitchen," says Escobar, Senior Partner and Design Principal at his eponymous firm.





While original plans called for two stand-alone buildings, the ODA team was able to approach the design with an innovative perspective, creating one holistic living experience by way of a uniquely designed bike storage room. By integrating a connecting path between the buildings with a 44-foot-long glass enclosed bike room, ODA was able to centralize the amenities and create a more spacious environment for residents without doubling up on lobbies, mailrooms and elevator banks.

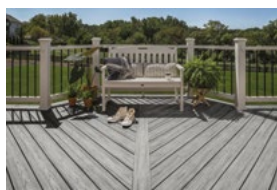
"The bike room in the courtyard area between the two buildings acts as a connecting corridor, which allowed us to create one unifying development, rather than two separate towers," said Christian Bailey, Principal at ODA. "By creatively working within the constraints of the zoning laws, we were able to maximize common areas and recreational spaces that knit the building together to allow for a more communal and connected lifestyle."

Reflecting the vibrancy of 43rd Street, residents can enjoy various amenities including an indoor pool with open-air access, the 6,000 square-foot landscaped private courtyard, a contemporary children's playroom, a state-of-the-art fitness center flooded with sunlight, and a translucent glass-enclosed "bike box" that reimagines typical bike storage as an innovative architectural centerpiece.

www.lemayescobar.com

SMART AND SOPHISTICATED DECKING SOLUTIONS WITH TREX COMPOSITE

Trex is the world's number one brand of premium decking and railing. Made from 95% recycled materials, it is eco-friendly and guaranteed to look like new for decades. Trex Transcend composite decking combines a finish that resists stains, scratches and mould with a distinctive and natural-looking, wood-grain pattern in deep, saturated colours inspired by the great outdoors. With its range of decking solutions and products, Trex offers homeowners and contractors the chance to make any garden look truly unique.



TREX ENHANCE

The new Trex Enhance range provides trade professionals and homeowners with a high-performance, lower-cost deck board designed to compete more directly with timber. Delivering the beauty of wood with the confidence of composite by combining premium aesthetics with superior durability and ultra-low maintenance – all at an attainable price point. The Enhance decking collection is part of Trex's tiered decking line-up. Unlike wood, composite decking resists fading and won't rot, warp, crack or splinter, regardless of daily wear and tear. The boards will even retain their good looks after years of wet British winters and summers.

For more information visit www.trex.com/uk



BRITISH LED DOWNLIGHTS

Available as GU10 or Engineered versions in high CRI and various optical angles all created in the UK.

WWW.BBLIGHT.CO

Tel 0203 327 0385

A Passion for light and making it work!

SIMPLE or SMART Energy Saving Controls

DANLERS Limited are proud to introduce SMART PIR Sensors suitable to work wirelessly with ecosystems including: CASAMBI, SILVAIR, MYMESH and WIREPAS. These new controls compliment DANLERS highly regarded stand alone controls range which has been simply saving energy for our customers for nearly 30 years.

Whether WIRED or WIRELESS communication is required DANLERS have solutions suitable for most applications: Contact us or visit our website for more information on our lighting controls.

DANLERS
Controls for Lighting & HVAC

T: 01249 443377.
E: sales@danlers.co.uk
www.danlers.co.uk

DANLERS Limited, Vincients Road, Chippenham SN14 6NQ

NEW NORCROS ROCK-TITE CAPITALISES ON EXTERNAL PORCELAIN AND STONE TILE TRENDS

Norcros Adhesives is launching a new 3-part system for fixing increasingly-popular 20mm external porcelain and stone tiles, called Norcros Rock-Tite Exterior Porcelain & Stone System.



The Rock-Tite system comprises a Primer, a Mortar and a Brush-In Grout. It is designed for use by landscapers and garden designers, as well as tile fixers, and capitalises on a key trend in the tiling market currently. This is where internal tiled space is being extended to terrace or patio areas outside a building, which is part of a long-term lifestyle trend to enhance living areas by making better use of external space.

Traditionally these external areas might be covered with concrete pavers, which can be ugly, or timber decking, which is currently going out of fashion and can look tired quite quickly.

The new generation of 20mm porcelain and stone tiles brings a number of advantages. The key benefit is that they allow a seamless transition from internal to external space, which is totally in accordance with the leading fashion trend of the moment.

For further information visit www.norcros.com



PROTEUS HR SYNCHRONISES OLD WITH NEW AT ST CATHERINE'S COLLEGE

A NEW STATE-OF-THE-ART GRADUATE CENTRE AND STUDENT ACCOMMODATION PAVILIONS AT ST CATHERINE'S COLLEGE, OXFORD, HAVE BECOME THE LATEST DEVELOPMENTS TO FEATURE EYE-CATCHING PROTEUS HR CLADDING PANELS, MANUFACTURED BY PROTEUS FACADES.

The new Ainsworth Graduate Centre is a striking circular design yet one that sits harmoniously in a location steeped in history. The building resides on the site of the original Grade I listed campus designed by renowned architect Arne Jacobsen.

Built between 1960 and 1964, Jacobsen designed the college's main campus in its entirety. Since Jacobsen's death in 1971 additional buildings have been delivered by the Danish architect's assistant, Knud Holscher, and Stirling Prize-winning RIBA past president Stephen Hodder. Architects Purcell designed the new Graduate Centre as a continuation of the second phase of Hodder's development by following his typology as sensitively as possible.

Proteus HR TECU bronze cladding panels were specified for the cylindrical three-storey hub, which features a seminar room and common room, as a reference to Jacobsen's use of the material on previous projects at the college, synchronising old with new.

Proteus HR is a modular rainscreen system that offers a smooth façade with recessed joints. The panels have a lightweight aluminium honeycomb core structurally bonded between two thin gauges of metal. The lightweight nature of this rainscreen system minimises weight loadings on the underlying structure whilst achieving strength and rigidity.



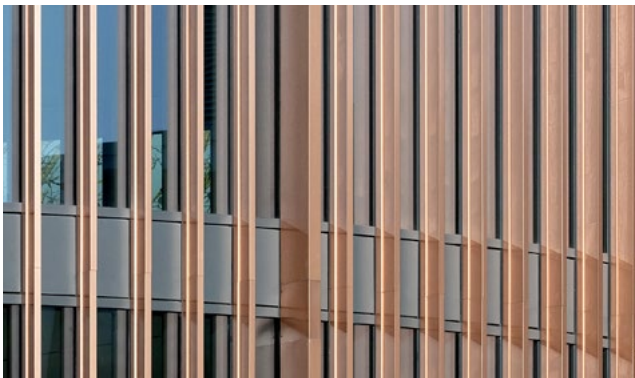
The new Ainsworth Graduate Centre is a striking circular design yet one that sits harmoniously in a location steeped in history.

The panels are fixed onto a unique system of aluminium carriers and ancillary components, which were designed and manufactured by Proteus Facades. Proteus fabricated the structural element of the fixing system so that it physically curves around the building. Installers Norman & Underwood then secured the flat panels to create a faceted façade that, when viewed from afar gives the perception that it is curved around a tight radius.

Proteus Facades also fabricated three varieties of TECU bronze fins for external use on glazed sections. Shorter fins were secured with a modified vertical aluminium extrusion cloaked with TECU bronze and secured with stainless steel brackets. Each one is fixed off the curtain wall system, with the TECU bronze capping designed bespoke to achieve the maximum depth from the glazing line to create a more striking aesthetic.

Deeper, vertical TECU Bronze fins are secured to a bespoke structural frame up to 450mm off the cladding line, which compartmentalises the façade. The vertical fins frame the structural bay and are fixed off curtain walling, spigoted into the ground and bracketed at the head. The internal aluminium carcass was secured with structural brackets back to the curtain wall and plated at join positions with discrete fixings.

Horizontal beams on the top of the upper level were fabricated in a curve and fixed to a bespoke aluminium structure, then cloaked with the TECU Bronze material from Proteus. Norman & Underwood secured the beams with structural gusseted brackets fixed back to the primary structure. All three types of fins



went through a double-marquette process, where principal and secondary designs were presented to the architects and client for review before manufacture.

As well as a reference to the original campus buildings, the bronze finish of the panels and fins was specified to contrast in tone and glossiness with stainless steel panels, also manufactured by Proteus Facades, which feature on existing and the newly developed student accommodation blocks adjacent to the centre.

In the early 1990s and 2000s Hodder added three accommodation blocks to the site, housing a total of 54 rooms. The facades on these buildings feature Proteus HR Stainless Steel cladding panels, manufactured by Proteus Facades several decades ago. This material was originally chosen as the smooth finish of the stainless steel stands out against the coarse finish of the concrete structure creating a textured facade.

Like the Graduate Centre, the newest student accommodation pavilions are a continuation of Hodder's development, adding 78 large spacious en-suite rooms connected by glazed stairwells. The façades of the new buildings imitates those constructed by Hodder, and so Proteus Facades was appointed to fabricate exact replicas of the original Stainless Steel panels they manufactured some twenty years previous for the new development, whilst using more modern methods of construction.

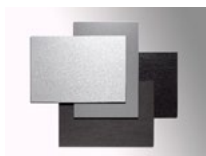
The stainless steel panels sit inboard of the building's concrete frame with a standard pattern of two panels adjacent to large rectangular windows on each of the rooms. The Proteus HR rainscreen panels were supplied pre-finished with a 240S brushed polished finish.

The aluminium carrier system used is fully adjustable on all axis, allowing exacting sightlines to be maintained across the façade. This enables the façade at St Catherine's college to make the most of linear shadow lines between the Proteus HR panels and concrete structure.

Proteus HR is available in steel, aluminium, zinc, stainless steel, copper alloys and other materials. For further information about the innovative rainscreen cladding system or to view more inspirational projects from Proteus Facades, [visit: www.proteusfacades.com](http://www.proteusfacades.com) or [call: 0151 545 5075](tel:01515455075).

NEW SURFACE SERIES LAUNCHED

ALUCOBOND® rocca from 3A Composites GmbH, is a new range of four surface designs which takes its inspiration from the rugged stone formations and features that have shaped the natural world for millennia. Rocca, from ALUCOBOND®, is stripped of all colour, with its unique visual character revealed only by light refraction on its surface to present an almost raw primal beauty that is in tune with the natural landscape and when used with ALUCOBOND® A2, a non-combustible panel with a mineral-filled core, it meets all of the strict requirements of fire regulations too.



Four shades are available within the rocca range; the soft jet black of 'Graphite', the rugged terrain of 'Dolomite' anthracite, the weathered iron-grey of a 'Meteorite', the crisp silver-white of 'Quartzite' and all finishes feature a perceptibly textured structure where light is broken up naturally into the widest range of shades. Uniquely, the surfaces seamlessly shift between defined and vibrant or softer and subtle, depending on the viewing angle or how light falls on to it – not unlike that of natural stone. ALUCOBOND® rocca is available in ALUCOBOND® PLUS and ALUCOBOND® A2 and is ideal for all building façade applications or can be used to give individual character and aesthetic to structures such as balconies or entrance areas, where architects seek that enigmatic natural stone look.

For details about ALUCOBOND® rocca or any of its surface colours and finishes, as well as information about the company's products and services, visit www.alucobond.com or call + 44 (0) 75 84 68 02 62.

SPV COMPLETE CLADDING WORKS AT THE NEC

SPV Group- the Walsall based refurbishment specialists, have recently completed Phase 2 of the cladding works at The NEC, Birmingham. The cladding works undertaken by SPV form part of a £4.5 million transformation which will completely



change the look and feel of the iconic Birmingham based venue. The new design has recently seen 37 pyramid translucent structures installed – created by architects Acivico – that can be backlit to create a stunning visual effect sandwiched between the pyramids are a series of vibrant colour panels designed by global agency McCann.

The finished result using this innovative technology is visually stunning. The project has not only transformed and modernised the dated building which was originally built in 1976, but has also made the area a far more dynamic and engaging environment for all customers and set the NEC apart as one of the best leisure destinations in the country. SPV's remit was the installation of designed metal rainscreen cassette panel cladding complete with bespoke flashings.

www.spv-uk.co.uk

SAFE ACCESS FOR THE NEW ALBUKHARY FOUNDATION GALLERY OF THE ISLAMIC WORLD

Bilco UK supplied twenty one special size Ladder Access Roof Hatches to the British Museum's newest gallery.

The new, permanent, exhibition space is a result of the renovation and joining together of two beautiful Victorian galleries located in the 'White Wing' area of the Museum. The galleries had been closed for several years as they were in need of renovation.

The Albukhary Foundation Gallery of the Islamic World displays magnificent works of art alongside everyday objects. The aim is to enable the visitor to explore the cultural significance, breadth and impact of the Islamic world in a creative and exciting way. Audio-visuals and specialist lighting bring the culture of the Islamic world to life.

The roof of the White Wing was originally laid in lead but was later replaced with copper in the 1960s. As part of the refurbishment of the two galleries it was decided to return the roof to its original lead design. The roof timbers and boarding were overhauled, and forty-five tonnes of new lead added.



Ladder access was required to the roof void area to allow for routine maintenance activities. Bilco UK's SS-50TB Ladder Access Roof Hatches were specified by the architects, HoK. The installation was managed by the Principle Contractor, Coniston Limited, who have a reputation for delivering heritage and conservation projects and a long history of working with the British Museum.

The SS-50TB Roof Hatches were made to order as they were required in a larger non-standard size, 1215mm x 915mm, than the standard stock sizes. The hatches were also manufactured with a PPC finish to blend in with the new roof.

If you would like to find out more about safe and easy access to roof areas for your next project please call 01284 701696 or visit www.bilco.co.uk.

KEMPEROL® Liquid Waterproofing

Long term protection for flat roofs,
buildings and critical structures

Warm roofs, inverted roofs, green roofs,
podium decks, walkways, balconies,
terraces, car parks...

- No hot works
- Sustainable
- Solvent-free
- Odourless

Whatever your
requirements, we have
a certified and proven
solution to meet your
needs.

Contact us to discuss
your next project.

FREE
Site Survey &
Specification Service
enquiries@kempersystem.co.uk



KEMPER SYSTEM
Tel: 01925 445532
enquiries@kempersystem.co.uk
www.kempersystem.co.uk



KEMPER
SYSTEM
Kemperol Liquid Waterproofing



REYNAERS FACILITATES DELIVERY OF A WORLD-FIRST IN DESIGN AT AXIS TOWERS

Axis Towers is the first facility in the world where two towers turn around their own axis, but stand on the same foundation, separated by multiple expansion joints. Attracting much interest and acclaim from the architectural community, each floor is turned by two degrees around its axis in order to achieve the desired spiral effect.

Located in the Vake district of Tbilisi, Georgia, and designed as a multi-functional complex, the 'White Tower' (Stone Tower) comprises apartments whilst the Black Tower (Glass Tower) is home to a hotel, offices, a fitness centre with a swimming pool, and a Sky Bar at the very top.

The upper floors of the towers offer beautiful views of the entire city and, in particular, the Dynamo Stadium. The towers are equipped with 22 of the fastest elevators in Georgia and the total parking area is equal to the area of four football stadiums. The building's architecture is quite complex, and all constructional solutions are

designed in such a way as to withstand the heavy winds which typically frequent Tbilisi.

The Reynaers Aluminium systems were chosen to be part of the Axis Towers project because of their reliability (there was a request to test 4500 Pa), ergonomics and their aesthetics complementing the overall appearance of the building. The project has fulfilled all the necessary thermal parameters and has been designed to withstand the particular heavy winds unique to Tbilisi.

Georgia is a country with medium seismic activity resulting in Axis Towers having to tackle a complex array of design and structural challenges including applying significant measures to attain shock wave resistance. Thanks to the necessary gaps between the double-glazed windows and aluminium profiles of the Reynaers systems, Axis Towers were able to achieve the required high level of the indicator.



The project also efficiently projects daylight transmission and noise reduction to a high standard thanks to the innovative and versatile use of Reynaers Aluminium systems.

Opening sashes of large sizes were used, alongside doors that were more than 3.5m in height and greater than 2m in width. Constructions of non-standard height and width were also applied, including the unique implementation of the CP 155-LS slide system built into the CW 50 system - the first time this has ever officially been incorporated.

The CW 50 façade system with embedded CW insert structural doors was also used, with reinforced hardware of the American manufacturer. In addition, Reynaers Aluminium sliding systems CP 155-LS and CP 68, window-door system CS 77 (windows, doors of internal and external opening) were installed.

The standout project is the largest of its kind for Reynaers Aluminium in Georgia today and is a fantastic example of what its systems can help developers achieve.

A showcase of the Axis Towers project is available here:
www.reynaers.co.uk/en-UK/inspiration/aluminium-project-references/axis-towers.

Further details are available from:
 Reynaers Aluminium Limited,
 Tel: 0121 421 1999, or email: reynaersltd@reynaers.com,

www.reynaers.co.uk





SUNRAY TIMBER DOOR DIVISION LAUNCH FIRE-SECURE®

FIRE-SECURE® is a brand new ground-breaking combined timber fire and security rated door revolutionising door safety and standards.

Within the commercial and residential sectors the increased demand on passive Fire protection and Building security has intensified following disasters such as Grenfell, which must lead to responsible product manufacturers investing into R&D to provide specifiers with accredited, tested products to meet and exceed measured performance criteria.

FIRE-SECURE® is a Timber Door which offers two unique benefits, timed protection from Fire and timed protection from physical attack.

Having invested a six-figure sum in the development of this range, Sunray have achieved the ability to provide a 30 minute fire rating on either face of the door (interior or exterior) as well as it having the

accredited LPCB SR (Security levels 1 & 2) certification.

These features are unique in their own right, however combined into one product they provide any specifier with paramount assurance to withstand the most vulnerable of applications and Passive Fire or Security Door solutions.

Without compromise the testing to the Fire-Secure® range has been our most challenging in order to pass the punishing and rigorous testing by the renowned test houses.

The result is a Timber Door which provides aesthetics with a range of colour or veneer finishes, vision panels, locking options and critically with the underlying assurance of Fire and Security protection.

For more details call our specialised team to discuss your particular project on 01252 645534

INTRODUCING... **FIRE-SECURE®**

**A BRAND NEW GROUND-BREAKING COMBINED TIMBER
FIRE & SECURITY RATED DOOR, WHICH REVOLUTIONISES
DOOR SAFETY AND STANDARDS.**

FIRE-SECURE® is a Timber Door which offers two unique benefits, timed protection from fire and timed protection from physical attack.

Sunray have achieved the ability to provide a 30 minute fire rating on either face of the door (interior or exterior) as well as it having the accredited LPCB SR (Security Levels 1 & 2) certification.

The result is a Timber Door which provides aesthetics with a range of colour and veneer finishes, vision panels, locking options and critically with the underlying assurance of Fire and Security protection.

FIRE-SECURE® DOORS ARE THE IDEAL SOLUTION FOR



COMMERCIAL



HOTEL / LEISURE



SOCIAL HOUSING



HEALTHCARE

**For more details, call our specialised team
to discuss your particular project on**

01252 645534

sales@sunraytimberdoordivision.co.uk

www.sunraytimberdoors.co.uk

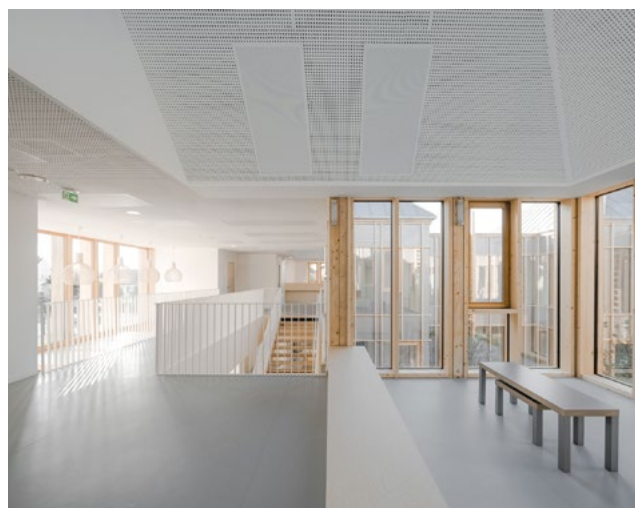


TAVERNY MEDICAL CENTER

HARMONIOUSLY INTEGRATED IN THE SURROUNDING URBAN ENVIRONMENT

The project of a health centre started in July 2016 by Taverny city council aims at gathering in one place a multidisciplinary team of medical doctors and health-care professionals so as to make up for the lack of practitioners outside major cities. Since it is located in a fragmented townscape and bordered by a motorway, we have sought to design a building constructed around a central patio, with an interior well-adapted to care facilities and reminiscent of ancient cloisters.

Its overall size and shape indicate our aim to integrate it harmoniously in the surrounding urban environment, with balanced proportions between filled and empty spaces, mineral and vegetal components, buildings and green areas. The programme involves a functional organization of the space. The square shape allows an arrangement of areas of graded privacy around a communal area.



“

The timbered facade is framed to resemble a forest. It reflects our desire to provide the town with an environmentally-friendly building



The central patio offers several advantages such as natural lighting for the whole building. It also serves as an open extension of the waiting rooms and acts as an intimate and sensory place where medicinal plants are grown, a reminder of the health and curative purpose of the Centre.

The timbered facade is framed to resemble a forest. It reflects our desire to provide the town with an environmentally-friendly building. Wood is massively used (structure, facade cladding), for its sustainable attribute and its capacity to capture CO2. The outer layer of the building will ensure the control of the ambient climate inside the building for the well-being of the patients.

Rising above the timbered facade, four-sided roofs crown the building and are at a scale in keeping with that of the nearby existing buildings. They cover the medical centre and ensure the natural lighting and ventilation of the different areas.

www.maa.fr





**APPLICATIONS
ENGINEERING LTD**

T: +44 (0)1825 764737
F: +44 (0)1825 768330
E: info@appeng.co.uk
www.appeng.co.uk



FIRE SPRINKLER VALVE SET 1" to 2"







HR PROF THE **ECO-FRIENDLY** FIRE RETARDANT

Water based - does not leach • Allows wood to breathe naturally
Internal/external application • Colourless - Odourless
EN 13501 - 1 • Non Toxic - No Solvents
BS 476 part 6 & BS 476 part 7 • Euro-class B-s1-d0 and C-s1-d0
BM TRADA ISO 9001 Certificate • Meets the highest EU standards

Classification Reports & Certificates for HR Prof; Pine, Spruce, Scotch/Siberian Larch, Western Red Cedar, Oak, Plywood & More



**ALSO FOR WOOD PROTECTION FIRE RETARDANT
UK ONE COAT INTERIOR**

A clear, colourless treatment for Euroclass B s2 d0 and Class O in a one coat application on porous wood, porous-faced plywood and porous wood based boards.

FIRE RETARDANT UK TOP COAT SEALER INTERIOR OPTION

For protection against dirt, UV, and splinter resistant surface, a wipe-able sealer for application over Interior One Coat. In clear or Wood-stain - Matt or Satin finish.

0800 7833 228 | sales@fireretardantuk.com





High Quality, Traditional Timber Window and Doors

*Providing Tailor Made Solutions For Your Project. Period Property Experts.
Supply Only, Supply and Install, Draught Proofing and Overhaul.*



01344 868 668

www.sashwindow.com



**THE SASH
WINDOW
WORKSHOP**

INSTALLATION OF IKONIC DESIGNED BESPOKE PASSENGER LIFT TO MULTI MILLION POUND PROPERTY

The centre of London is home to some of the most expensive real estate in the world. Residential homes comprising of 12 bedrooms, 2 basements, 2 lifts, a cinema, a gym, separate leisure areas, a Spa complete with a 20m Swimming Pool that seamlessly transforms itself into an entertainment space, plus a separate mews property, this super-prime project totalled 22,500 sq. ft.

iKONIC LIFTS Ltd was one of several sub-contractors working on this major residential project, nestled anonymously amongst foreign embassies in the heart of Belgravia which required flexibility, teamwork, and an exact approach to quality control.

IKONIC CHALLENGE

iKONIC had to ensure this lift looked stunning but also worked effortlessly, oval underdriven glazed doors, aged bronze finishes, space limitations. The structure was cleverly designed to be used as a conduit for all necessary electrical and mechanical services minimising the visual impact.

IKONIC SOLUTION

iKONICS Project Manager quickly completed a staged delivery plan ensuring enough equipment on site for our engineers to work without overloading the site with materials, eliminating

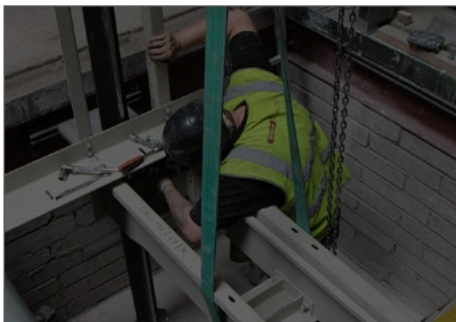


any health and safety or damage issues that may occur, combating our confined working area.

IKONIC RESULTS

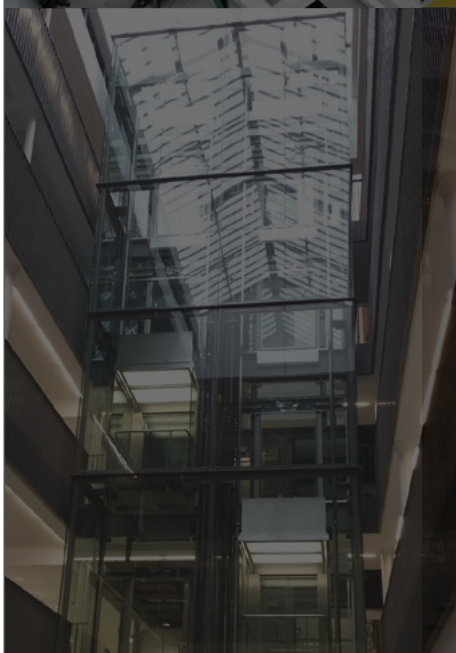
The bronze meshed "Modern Moroccan Lantern" lift, designed, manufactured and installed by iKONIC Lifts, which rides up the centre of four floors, was fully installed on time. The circular lift car with a glass ceiling which gives a view to the London sky as it moves up to the top, shows no mechanical workings or electrical wiring. The finished result was simply stunning and completes the ambience of the space and complements its environment creating an immersive experience as a passenger and furthermore a fabulous luxurious taking point for the multi-million-pound grade listed building.

Discover more @ www.ikoniclfts.co.uk and view our case studies.



Specialising In:
Bespoke Lift Design & Installations
Grade Listed Building Lift Solutions

Stay Connected: www.ikoniclfts.co.uk
Call: 0203 376 6440



Passenger

Platform

Goods

Service



THE KING'S SCHOOL INTERNATIONAL COLLEGE

Walters & Cohen Architects balances industrial heritage with contemporary design at the new International College for The King's School, Canterbury. In 2016, The King's School in Canterbury asked London-based practice, Walters & Cohen Architects, to undertake a feasibility study for a 1.25-hectare ex-industrial site on the edge of Canterbury's city centre. The study resulted in an updated masterplan for the site that includes an International College, staff housing, and a sports court with changing facilities. It also included a new drama centre and theatre in the 19th-century Malthouse building, which was undertaken by another practice.

The scheme was granted consent with unanimous support from the City of Canterbury's planning committee in March 2017.



“

Quote goes here quote goes here Quote goes here quote goes here Quote goes here quote goes here

Walters & Cohen Architects developed designs for a three-storey building that wraps around a private courtyard. It was crucial that the new building complemented the site's industrial heritage as well as the existing buildings surrounding it; achieved with a striking mixture of weathered concrete and glass. The landscape complements and connects the many elements of the site; a civic square shared with the Malthouse is an important focal point of the campus. Domestic gardens bound two other sides of the College building, while, to the north, the new sports court will be used by the College, King's School and local community, creating a diverse and connected school community, integrated with the historic surroundings.

The building comprises 34 ensuite bedrooms with boarding for 80 students, several flats for staff, classrooms, and specialist teaching facilities. The classrooms are fully equipped, flexible places allowing for a mixture of traditional learning, digital research, personal interaction and discussion. The International College teaches students aged 11-16, acting as a stepping-stone for those entering the English school system from abroad.

www.waltersandcohen.com



ANCON OFFERING ENHANCED NON-COMBUSTIBLE BALCONY CONNECTOR RANGE

Ancon is leading the way in developing solutions to meet the Government's tough new fire safety requirements for buildings, with the launch of an upgraded range of non-combustible insulated balcony connectors.



current Building (Amendment) Regulations 2018 for wall components in high-rise residential buildings over 18 metres in height, the Ancon connectors provide contractors with a fire-safe solution for all multi-occupancy buildings, regardless of height.

The development follows news that the existing 18 metres height limit for combustible materials in high rise multi-occupancy buildings is to be further reduced to 11 metres, extending the scope of the regulations to buildings over 4-storeys and affecting the vast majority of new flats, hospitals, residential care premises and student accommodation. This has again increased the focus on fire safety with contractors and developers looking to future-proof their buildings.

Ancon's insulated balcony connectors have been re-engineered and now feature non-combustible mineral wool insulation and improved fire-rated thermal pads to maintain their impressive thermal insulation properties and provide the required A1/A2 reaction to fire rating.

As well as complying with the combustibility requirements in the

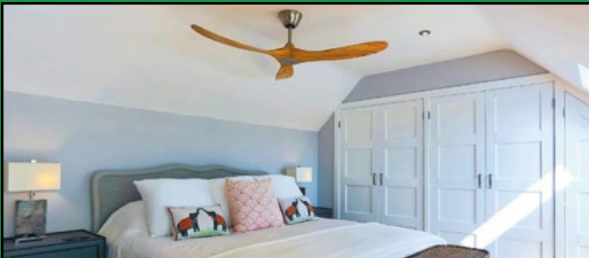
Connectors are available in a range of types, including Ancon Isotec for concrete to concrete applications, Ancon STS for anchoring steel balconies to a structural steel frame, and Ancon STC for steel to concrete fixing.

Ancon Isotec, which features high grade 100% non-combustible mineral wool enclosed in a protective stainless-steel U-shaped profile, carries Class A1 fire rating – the highest level of fire safety performance.

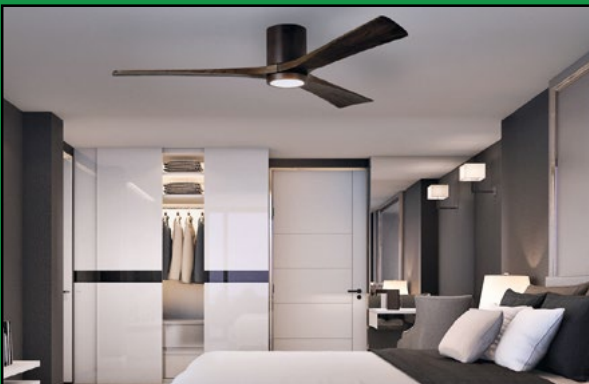
Ancon STS, for steel to steel applications, and Ancon STC, a two-part connector used for fixing large cantilever steel balconies to concrete floor slab, are both A1/A2 rated. Like Isotec, both now fully comply with the new regulations.

For further information or advice contact Ancon's Technical Team on 01142755224 or email tech@ancon.co.uk.

Beautiful Designer Ceiling Fans



Powerful - Stylish - Reliable - Silent



THE HENLEY FAN COMPANY LTD



01256 636 509
www.henleyfan.com

Replacement Balustrade



A great many character or period properties have stone balustrade incorporated into their design. These balustrades make a large visual impact, but they also have a practical purpose as barriers and screens.



A common cause for the demise of a balustrade is the presence of water. Many original balustrades were made from artificial stonework such as Roman Cement, Concrete and Stucco. These were often reinforced with iron or mild steel bars which rust and expand when exposed to water over a long period.



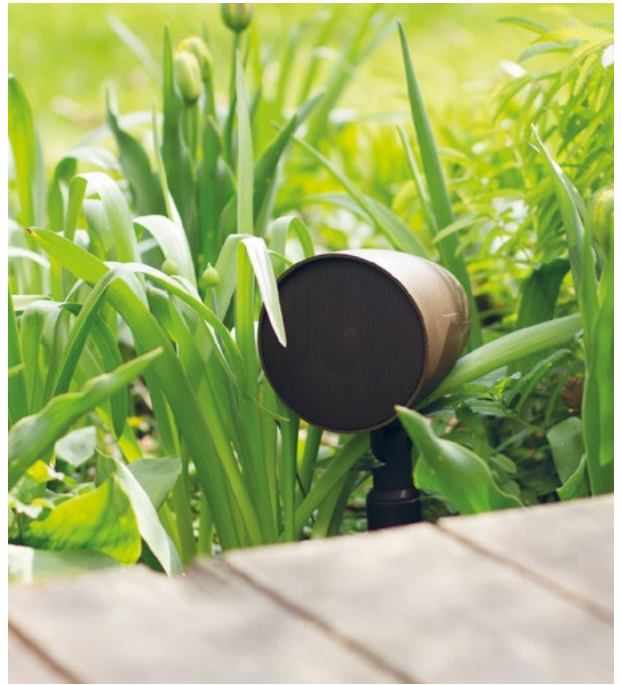
Other balustrades were made of natural stone such as Portland Stone or Bath Stone. While these types of balustrade do not suffer from 'blown' reinforcing, they do have a finite life span and the surface of stonework will often delaminate or form powdery patches.

Kent Balusters

Tel: 01634 711617

Email: info@kentbalusters.co.uk

Web: www.kentbalusters.co.uk



Ultra-discreet loudspeakers for any location

British loudspeaker designer, Monitor Audio, has a range of Custom Install speakers for every situation. Their ultra-discreet In-ceiling and In-wall speakers deliver a stunning audio performance whilst protecting the room's décor. For more extreme environments, such as outdoor terraces or pool rooms, they offer a choice of speaker ranges, all of which deliver Monitor Audio's award-winning sound.



monitoraudio.com/install



MODERN BARN CONVERSION GIVES LISTED STONE RUINS A NEW LEASE OF LIFE

The historic listed ruins of a former farm estate property, dating back to the 19th century, required sympathetic repair whilst ensuring minimal disruption to the already fragile structure. These partially collapsed rubble stone walls had suffered from years of weathering and deterioration but were now to be incorporated into the annexe of a modern farm conversion.

Flexible HeliBars were used to stabilise the ruins as they offered the ideal solution due to the irregularities in the direction of the mortar beds. HeliBars were also suitable for reinforcing the chimney breasts and fireplaces which were important features to be retained from the previous split-level property the ruins once were.

Once the concealed installation was complete, the ruins were fully stabilised and reinforced. The original materials were retained, structural integrity restored and the ancient walls could now be incorporated into the new annexe.

Helifix
Tel. 020 8735 5200
email : sales@helifix.co.uk
Web. www.helifix.co.uk



ENVIROVENT GAINS CIBSE ACCREDITATION FOR VENTILATION CPD

EnviroVent, one of the UK's leading ventilation manufacturers, is celebrating its CPD (Continuous Professional Development) course: Ventilation Strategies & Best Practice Compliance becoming CIBSE (Chartered Institution of Building Services Engineers) accredited.



CIBSE is a professional association offering expertise in the Building Services Industry that represents housebuilders, consultants and engineers, a collection of people for which good ventilation knowledge and expertise is vitally important.

EnviroVent's CPD outlines the roadmap to Ventilation Compliance and considers the current environmental and political drivers in ensuring good indoor air quality through efficient ventilation. It is delivered by an EnviroVent ventilation specialist in the form of an hour-long seminar, which covers the key areas on the subject of ensuring adequate ventilation. This includes technical theory around the ventilation strategies of Approved Document F and the minimum requirements of Approved Document L.

To find out more about EnviroVent's CIBSE and RIBA-accredited courses, call on 0345 27 27 810, email enquiries@envirovent.com or visit www.envirovent.com

FIRE-RATING FIRST FOR MORLEY GLASS & GLAZING

Morley Glass & Glazing has become the first company in the UK to achieve a fire-rating accreditation for its insulated glass units with integral blinds inside.



Image: Tomer Kohn

The fire-rated Uni-Blinds sealed units with ScreenLine integral blinds inside now comply with the performance criteria set out in the EU 305/2011 Construction Products Regulation, and have been independently verified by TUV UK, a UKAS accredited third party testing house.

Ian Short, managing director of Morley Glass & Glazing said: "There are more than 300 fire-related deaths and more than 200,000 fire alarms raised in the UK every year. With recent high-profile incidents such as Grenfell Tower, it's more important than ever that the correct building materials are specified. Our sealed units with integral blinds inside are manufactured in the UK using fire safety glass from Pyroguard and can deliver 30 to 120 minutes integrity and insulation fire-resistance."

For more information visit www.morleyglass.co.uk.

TURN THE IPAD INTO THE FOCUS OF ANY ROOM

Viveroo's stunning range of wall and furniture mounts for the iPad enhance and complement this icon of design. The distinctive sculptured range is hand-crafted from premium materials and has been created to blend perfectly with the iPad's form.

Each mount in the range offers different features that have been designed to provide improved visibility and functionality of the iPad in both domestic and commercial environments.

LOOP

The world's first rotating iPad mount for flush installation. The innovative rotating mechanism makes it possible to alternate between vertical and horizontal positions. Available in Super Silver, Deep Black and Clear White.

LOOP 360

A table-mounted version of the Loop allowing 360-degree rotation of the iPad. Perfect for retail and domestic environments. Available in Super Silver, Deep Black and Clear White.

SQUARE

The design of the Square complements the form of the iPad and offers spectacular presence from any angle. Available in Super Silver, Deep Black and Clear White.

FREE

This distinctive design appears to float in front of the wall. The contemporary asymmetrical lines are beautifully machined from billeted aluminium and create a sharp look in a modern room. Available in Super Silver and Dark Steel.



FREE FLEX

Integrates the iPad into every environment. Features USB cable charging, a rotating joint head to allow landscape or portrait orientation and custom tube length for the perfect lifestyle fit.

FREE FLEX PEDESTAL

The pedestal base allows the Free to be moved from room to room. Features USB cable charging and a rotating joint head to allow landscape or portrait orientation.

CUSTOMISATION

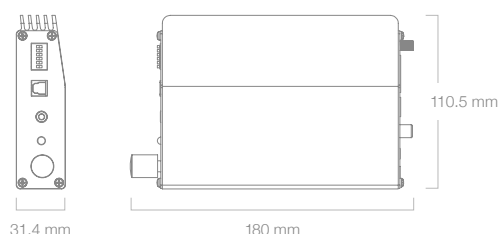
The entire range can be finished in any colour, and corporate branding can be added.

PRICES START AT £375

www.red-line.co.uk/viveroo



Compact, stylish and versatile IA40-3 Amplifier



The IA40-3 Installation Amplifier is a highly versatile unit and features digital, analogue and Bluetooth® inputs with Dolby Audio (Dolby Digital) for maximum flexibility. Designed for modern living, the IA40-3 is a Monitor Audio's small solution when superior sound is required in custom install projects.

Ideal for tight environments, it also works beautifully when paired with Monitor Audio in-ceiling speakers and passive soundbars.

Switchable between 3 or 2 channels with/without an active subwoofer, for a wide range of applications.



monitoraudio.com/amplifiers

£13M RESIDENTIAL SCHEME BRINGS NEW HOMES TO CROYDON

WORK HAS COMPLETED ON RESIDENTIAL SCHEME BRINGING 65 NEW HOMES TO THE LONDON BOROUGH

The Waldrons scheme includes nine three-bed, 29 two-bed, 19 one-bed and eight studio flats, with over 30 per cent of the homes being dedicated to affordable housing.

The development also includes roof gardens and green roofs on the stepped sections of the building, space for up to 67 bicycles and 32 parking bays. London-based CPMG Architects has been responsible for the delivery of the design, which was constructed by contractor Cube Construction on behalf of UK Land Assets Limited.

Located on a prominent site on the corner of The Waldrons and Davenant Road, the building provides much-needed regeneration and housing stock to the area, previously home to a listed building.

Chris White, director at CPMG Architects said: "It's a common requirement that more affordable housing is needed throughout the UK, especially in London. We're proud to be part of the ongoing development in the Croydon area, but we're especially happy that a large proportion of this new development is dedicated to affordable housing and will help support the local community.

"Thanks to the sloping nature of this site, the design team have been able to really maximise the area through the creation of an unusual, L-shaped building with varied storey heights, greatly improving the aesthetic of the area. We've made the most of the physicality of the building, creating green spaces on the stepped sections to embed community into the heart of the development by providing communal spaces for residents to use and enjoy together.



"We're confident that the people moving into the housing here will be really happy with the environment created, and that this scheme will be a catalyst for further investment and redevelopment in the area."

Andrew Crainey of UK Land Assets Limited said: "We are really proud to have been working alongside CPMG on such a fantastic project. Not only has the scheme provided affordable housing for local people, but we hope that the development of this once under-utilised site will make a huge improvement to the area and inspire future regeneration projects in Croydon."

The design team consisted of project manager and cost consultants Gleeds, CPMG as architects and interior designers, structural engineers Curtins and M&E consultants CPW with G F Tomlinson acting as main contractors. The delivery team also consisted of M&E consultants MEP Design and structural engineers MC-E.

Find out more about CPMG Architects at www.cpmg-architects.com or join the conversation at [@cpmgArchitects](https://twitter.com/cpmgArchitects).



SCHÖCK FEATURES IN YORKSHIRE POST REDEVELOPMENT STORY

18-STOREY RESIDENTIAL TOWER DUE FOR COMPLETION IN EARLY 2021

Regeneration across the whole of Leeds is resulting in a major transformation of the city. And one of the current developments is on the site of the previous headquarters of the Yorkshire Post. Around eight years ago "Yorkshire's National Newspaper" moved from its long-standing home to new headquarters a couple of miles across the city. The previous 4.6 acre site is now a landmark four-phase development; and the immediate first phase will see the construction of an 18-storey residential tower due for completion in early 2021. The building benefits from extensive river frontage along the River Aire and will provide high-quality one, two and three bedroom apartments, a gym and an eleventh floor sky lounge. The proposal includes shops, resident's amenity areas and an enhanced river corridor. Around 242 apartments are anticipated in this first phase and the brick-clad concrete frame building will feature a high number of spacious balconies, also of concrete construction.

AVOIDING THERMAL BRIDGING IS CRITICAL

Balconies are effectively large external thermal fins on buildings. If there is ineffective insulation in the detailing, there will be local heat loss, resulting in more energy being required to maintain the internal temperature of the building. This is one major consequence of thermal bridging, but there are other issues too. Low internal surface temperatures in the area of the thermal bridge can cause condensation, leading not only to structural integrity problems with absorbent materials such as insulation products,



Graphic of a 'typical' insitu situation



Above, First phase of the development (Image courtesy of The Harris Partnership – Wakefield Office). Left, the Isokorb type K for concrete-to-concrete

or plasterboard, it also encourages mould growth. This can result in serious health implications for residents in the form of asthma and allergies. So for any project involving balcony detailing, the prevention of thermal bridging is a critical issue. And one of the most effective solutions available, is the Isokorb structural thermal break from Schöck. As the leading international supplier of structural thermal breaks, Schöck has almost limitless variants available in its main Isokorb range, offering planners complete construction dependability and enormous freedom of design. On this project it is the tried and trusted Schöck load-bearing element for concrete-to-concrete cantilever balcony detailing that is being installed. The units feature an HTE compression module made of high-density microfibre reinforced concrete, with an 80mm insulation thickness. The elements transfer both negative moments and positive shear forces.

DESIGN FREEDOM AND CONSTRUCTION DEPENDABILITY

In addition to concrete-to-concrete, the comprehensive Schöck Isokorb range offers solutions for concrete-to-steel, steel-to-steel, a thermally insulating connection for reinforced concrete walls – and even a maintenance free alternative to wrapped parapets. All products meet full compliance with the relevant UK building regulations; have NHBC approval; offer LABC Registration and independent BBA Certification.

For a free copy of the Schöck Thermal Bridging Guide; the Schöck Specifiers Guide or to view the range of downloadable software, contact Schöck on 01865 290 890 or visit the website at www.schoeck.co.uk

INNOVATION IS KEY FOR ENGINEERING AND CONSTRUCTION CONTRACTOR

FOR OVER 50 YEARS, FORDINBRIDGE PLC, AN INDEPENDENT FIRM IN WEST SUSSEX, HAS BEEN PROVIDING SOLUTIONS TO ENHANCE OUTSIDE SPACE

From humble beginnings manufacturing polytunnels for commercial horticulture, the company has evolved to design and build an industry leading portfolio of bespoke canopies, covered walkways and pre-fabricated statement buildings.

Working in multiple sectors including education, commercial, healthcare and leisure, Fordingbridge have a team of industry experts in each field, providing information and design notations from an early phase throughout to programme delivery. "The ethos we work to is very much a collaborative approach with our installation process," explains Fraser Dixon, Business Development Manager at the firm. "We ensure the clients requirements are fully understood, from both a design purpose and also to the works schedule. Our team achieve this through clear communication, engaging with the programme team as a whole and working with both the architects and end client. With a large volume of our work coming from education and healthcare, we understand the importance of a tight works programme, so always pre-fabricate our structures offsite to allow for a smoother installation with minimal disruption to the site. Our work in healthcare especially, which has included a number of ambulance bay canopies, requires careful planning. Working closely with other contractors, the paramedic unit and of course the NHS Trust themselves, means that we can stage a build to ensure the department can continue to function and crews and patients can access emergency departments."

The team also take the longevity of the end product into account, meaning that the claims of 'industry leading guarantees' are valid. "Our complete process is in-house, from design through to manufacture and installation," Fraser continues. "This means that we can take ownership of the brief, and monitor quality of our output closely. We understand that the value of a product isn't just about price, it's about how well it delivers over time. Our clients understand that while something may cost a little more, they will see the return on that investment through the overall lifespan of the product. If we take a school canopy as an example, where ours may cost a few per cent more initially, our steel structure would be guaranteed for an additional 15 years when compared to a competitor; 25 years in total. Add to that the point that we always ensure our education canopies are subject to full site-specific structural calculations, the overall value of our offering is very attractive."

Fordingbridges' experience in the leisure industry also adds to the diversity of the firm. With projects including roof-top skybars, Zoo Visitor Centres and animal enclosures, the businesses design



team have chance to flex their drawing metal when working with architects and planners. Building with steel and glulam timber as primary construction materials, Fordingbridge specialise in the creation of statement buildings which are as efficient as they are aesthetic. "We understand the buildability aspects of design, so it is always beneficial when we are engaged early," Fraser explains. "As we have the design capabilities in-house to complement the construction and engineering aspect, we can help alleviate some of the pressure architects face on more complex installations. Similarly, we can assist in initial planning. A good example of this is some forthcoming work we have at a popular zoo. We have worked closely with the businesses architect and owners to come up with a design which will be functional, environmentally conscious, deliverable and stunning! Sometimes the buildability aspect may be overlooked which can lead to extra costs for the client, but working with us from the outset means these aspects can be incorporated into the design. We want to bring architects works to fruition, and we want to do it as safely and cost effectively as possible."

www.fordinbridge.co.uk



SIMPSON Strong-Tie

NEW! Europe's Leading Range of Premium Fasteners

Simpson Strong-Tie® now offers a complete range of nails and screws for almost every application, including stainless steel, structural and collated options. Also featuring the award winning Quik Drive auto-feed system.

Building Safer Stronger Structures.

Call: 01827 255 600 | Web: www.strongtie.co.uk

SIMPSON STRONG-TIE'S FASTENER RANGE GOES PREMIUM

Introducing the brand new Premium Fasteners range by leading construction manufacturer Simpson Strong-Tie; featuring superior strength nails and screws to cover almost every application and showcased in the newly released Premium Fasteners Catalogue. Europe's leading range of superior nails and screws includes stainless steel, structural and collated options.



"We're excited to launch our new Premium Fasteners product collection" explains Jesper Hebbelstrup – European Fasteners Product Manager.

"Quality and reliability is our top priority. The fastening system you choose is as important as materials and finishing touches; cheap nails and screws can cause decking to loosen over time causing uneven surfaces. Fasteners can even deteriorate over time if used an inferior quality product is used. We've got the Premium Fastening systems you need to guarantee long-term performance and safety, whether you're fastening connectors, structural timber, CLT, concrete, light gauge steel, flooring, roofing or cladding."

The Premium Fasteners Catalogue is packed with technical information and installation advice and available now at www.strongtie.co.uk.



The Smartscape team installs innovative greening solutions for the creation of new urban green infrastructure throughout our towns and cities. Environmental sustainability is at the forefront of what we do to enrich local biodiversity and improve air quality. With exceptional greening solutions we enable our clients to be more competitive, improve local wellbeing and maintain their reputations as prime locations to live and work.

From living walls, living pillars and green streets our product range and horticultural knowledge can support architects and designers to meet the demand for increased green infrastructure and sustainable healthy cities. The Smartscape Living Wall system is rated Class 0 for fire retardancy, qualifying this as an excellent vertical greening choice for robust safety.

Contact us today to book CPD on cpd.training@scotscape.co.uk or call 0208 254 5000 to discuss your project with our team.

scotscape.co.uk



Part of the Scotscape group





ONE OF THE BEST OFFICES IN THE WORLD

THE NEW AMSTERDAM OFFICE OF DUTCH INVESTMENT MANAGER/DEVELOPER AMVEST

Investment manager/developer Amvest had a new goal with its new office, to become a best practice of its own development qualities. Showcasing the epitome of how a good office, embedded in a good environment, has to relate to its users. To reinforce that image, Amvest started pioneering in its own backyard, a former industrial zone turned into a residential area.

In this time where work and private life are increasingly intertwined, an office is more than a place of desks and chairs. More than ever, the influence of the working environment begins to emerge. We are aware that a well-designed environment leads to higher productivity, lower absenteeism and, more importantly, a higher degree of connection with the identity of a company.

These insights stood at the basis of the interior design; an environment that exudes both the identity of Amvest and at the same time embodies the best possible working environment.

This project is anything but standard; everything is specifically designed and tailor-made. This applies both to the beautifully designed exterior by Rietveld Architects as to the well-crafted interior by Firm architects. It starts when entering the building, stepping into a 20m² elevator, doubling as a meeting room complete with furniture, plants and art. It travels slowly between levels, affording visitors capturing views. An important effect of this choice is it encourages the use of the central staircase for the employees.



“

The custom-made workplaces are height adjustable and all situated on the same floor to stimulate interaction

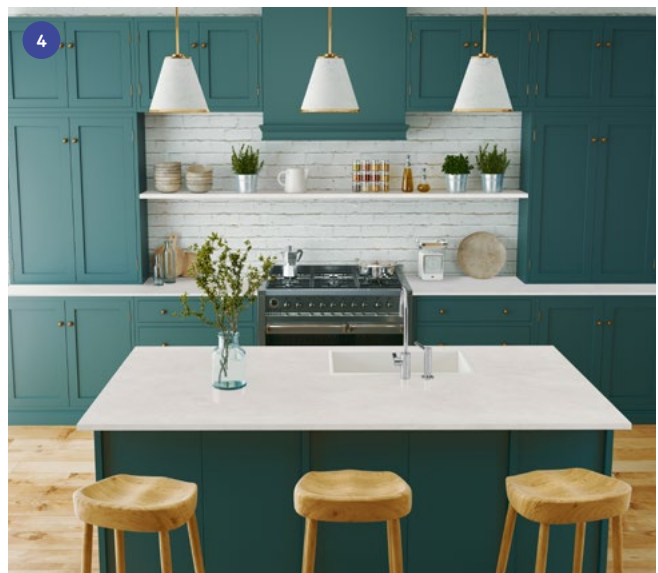
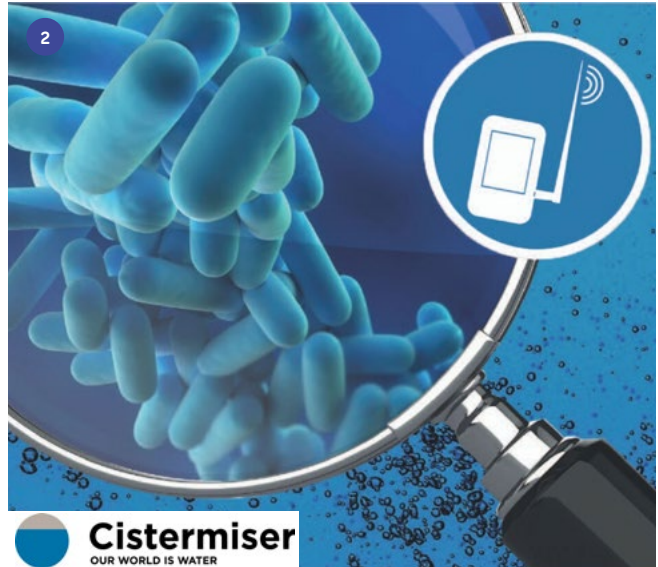
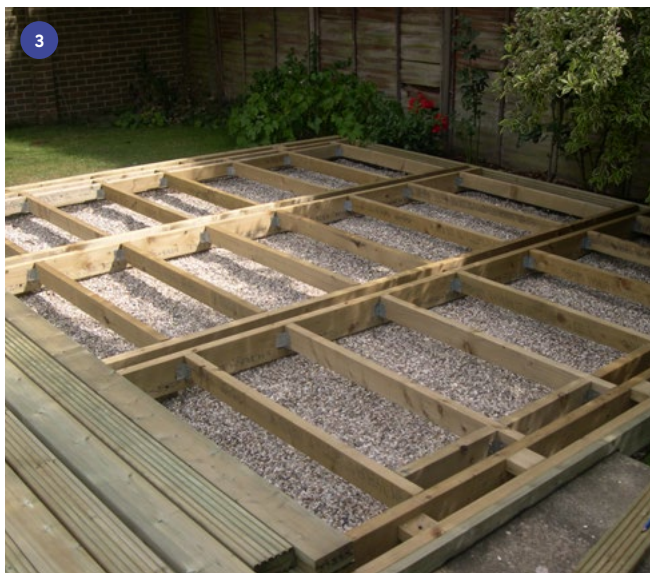
WHAT'S UNIQUE ABOUT IT

Keywords for the design are sustainability, flexibility and innovation. These form the basis for everything from floor to ceiling. For example, the sustainably produced carpet looks like a fabric version of a concrete floor, referring to the old concrete factory that stood on site. The informal areas have recycled oak herringbone flooring uniquely developed for Amvest. It has a magnetic layer, ruling out the glue and therefore enabling reuse in the future. The specially developed ceiling panels serve as cooling and heating and provide acoustic enhancement. A healthy environment is also stimulated through the use of many plants, and a roof garden with WiFi access and different areas to boost working outdoors.

The plan is open, light and encourages interaction. The custom-made workplaces are height adjustable and all situated on the same floor to stimulate interaction. Set up along the double-height windows to allow an optimum of natural daylight, ensuring a minimum of additional lighting needed. In the less lit and therefore more intimate middle areas, there are different uses to accommodate the various activities of work. On the top floor, special benches and tables are integrated into the ceiling and offer instant seating capacity on the push of a button. This flexibility is also found in the upholstered mobile wardrobes, serving as acoustic screens. This high level of customisation is leading in the design and is used as a decisive, stimulating and moving part of the interior.

www.firmarchitects.com





1

CUPA PIRAZZAS

Smithy Cottage, an unusual, cruciform shaped new-build property in Warrington, has recently been constructed using Cupa Pizarra's CUPA 2 natural slates. Selected for uniformity, longevity and aesthetics which are in-keeping with the surrounding properties, the CUPA 2 slates were used for the roof of the property which unusually incorporated atrium glazing and inlaid solar panels. The striking home was designed by Fasciato Architects who were tasked with creating a contemporary, single storey home. However, the architects also wanted the property to blend in with its surroundings. "We chose to introduce materials associated with other 'traditional' large houses in the local area, one of which was slate," commented Ian Scullion, Associate at Fasciato Architects. "As a result, we decided to use a natural slate for the roofing material to achieve a balance with the brief whilst also making the house feel homely and appropriate to its context."

www.cupapizarra.com/uk

2

CISTERMISER'S NEW CPD PRESENTATION EXPLAINS THE BENEFITS OF IOT REMOTE MONITORING

Intelligent washroom controls and water efficiency specialist Cistermiser has launched a new CPD learning module entitled: "Using the Internet of Things for Water Temperature Monitoring to Help Reduce Risk of Legionella". The fourth edition of ACoP L8, published by the HSE in 2013 with technical guidance published separately in Health & Safety Guidance 274, helps duty-holders comply with legal duties and Part 2 of this document specifically deals with control of Legionella bacteria in hot and cold water systems.

This CPD fully discusses how remote monitoring systems using IoT technology platforms can deliver significant advantages for management of commercial buildings in the 21st century.

www.cistermiser.co.uk

3

NEW HIGHER SPECIFICATION FOR DECK SUBSTRUCTURES

The specification requirements for pressure treated softwood deck substructures are set to change in BS8417, the British Standard for wood preservation, when it is next revised with leading trade bodies incorporating the changes now.

This means that all softwood beams, joists, wall plates, blocking and bracing will have to be pressure treated to the same level as posts that in permanent contact with the ground, a category referred to as Use Class 4.

TDCA and its members are working to adopt this change in policy in readiness for the publication of the revised BS8417, probably in 2021. Leading the way, Use Class 4 joists are already available from TDCA members Hoppings Softwoods and BSW Timber.

www.tdca.org.uk

4

STARON INTRODUCES SEVEN COLOURS TO ITS SURFACE COLLECTION FOR 2020

Designed with modern living in mind, premium solid surface brand, Staron has introduced seven new colours to its collection. Inspired by contemporary design and interiors, the new surfaces offer a refined finish that's guaranteed to enhance any residential kitchen, bathroom or commercial space. Neutral, yet eye-catching, each new colour from Staron features intricate, considered detail. From the unfinished, industrial look of Supreme Ash Concrete, to the contrasting flecks of Terrazzo Venezia, each new shade combines a stunning appearance with outstanding practical qualities.

The award-winning, revolutionary surfaces from Staron combine a sophisticated blend of natural minerals and thermosetting acrylic polymers for a structure that's as durable as it is hygienic.

www.staron.com



5

SWA SPECIFICATIONS ENSURE A BRITISH SUPPLY CHAIN

Britain's long and well regarded engineering heritage continues to flourish across a number of sectors; and can be seen fully represented by the businesses, of different sizes, which belong to the Steel Window Association. The SWA membership undertakes a wide range of work, from replica refurbishment, and even in-situ repair, to the fabrication and installation of new, high performance fenestration and doorsets, which are fully compliant with current building regulations. All of them, however, manufacture their products here in the UK using a mainly British-based supply chain.

Covering the whole country, they enable clients from individual homeowners to large corporations to, in effect, 'minimise their window miles'. SWA members manufacture their windows and doors in UK factories and therefore can help specifiers cut their carbon footprint.

www.steel-window-association.co.uk

6

THE VERSATILITY OF STERLINGOSB ZERO TRANSFORMS I-JUMP TRAMPOLINE PARK

i-Jump is Mansfield's popular trampoline park frequented by great numbers of ecstatic children and their accompanying guardians. When designing the interior, i-Jump needed to create a practical and easily managed space while still being fun. In order to achieve this, i-Jump has covered the walls using Norbord's revered SterlingOSB Zero. Sterling OSB Zero is a precision engineered wood panel product that is suitable for use across a great range of construction projects. It is the UK's only manufactured OSB that doesn't contain any added formaldehyde making this an ideal choice for somewhere like i-Jump. Stephi Grayson iJump's Operations Manager has described the versatility of SterlingOSB Zero as one of its most unique features.

For further information, call 01786 812 921 or visit www.norbord.co.uk

7

COMBINING DESIGN AND DURABILITY

2tec2 is a family owned company specialized in woven vinyl flooring for workspaces, hospitality, healthcare, public space and retail. A 100 % Belgian brand combining design and durability.

This multifunctional flooring combines the best characteristics of both hard and soft surface flooring, creating an innovative contemporary looking floor with endless design possibilities.

The numerous benefits have led us to becoming one of the market leaders in Europe and the rest of the world.

Mark Kayembe
mark@2tec2.com
+44 75 87 37 42 97

8

BRISANT SECURE UNVEILS THE WORLD'S MOST SECURE SMART DOOR HANDLE AND LOCK

British security authority Brisant Secure has developed one of the most robust smart door lock. The Ultion SMART is a piece of connected hardware homeowners can trust, as the dedicated team at Brisant Secure are security experts first and foremost.

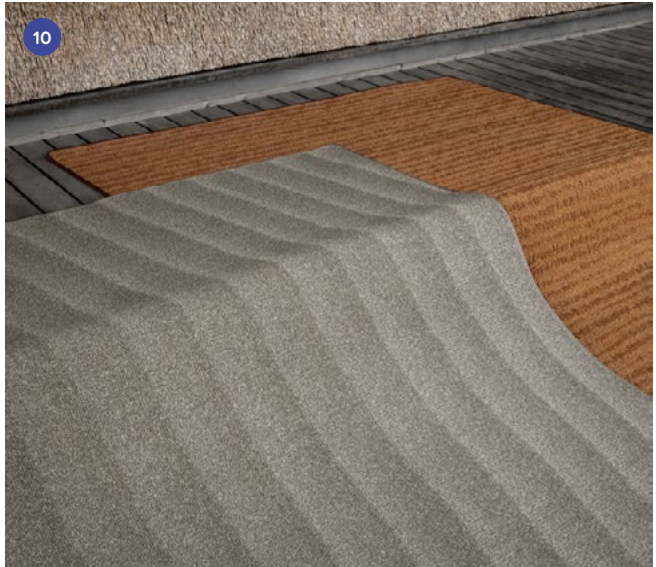
From the outside of the door, Ultion SMART appears to be a traditional door lock/handle but the from the inside leading smart home technology, including voice activation and geo-unlocking, is packed into the device. Brisant Secure is aware that homeowners also like the traditional method of opening a door and that is why there is an option to use a real key as a back-up, something no other smart door lock is currently complemented with.

www.ultion-lock.co.uk

9



10



11



12



9

ISOPRO® AND ISOMAXX®

Insulated concrete balcony connection systems offer the best insulation performance, with higher load capacity and faster installation.

- Cost-effective, high-quality performance components
- Faster installation with no need to tape joints.
- Blank inserts of the same insulation material to optimize design/cost
- Easy to cut to length when needed
- No moisture absorption by the insulation layer to reduce thermal performance
- Very low deflection at the connection to the structure
- Choice of insulation performance between the ISOPRO® and ISOMAXX® range of products
- Up to 120 minutes fire resistance.

For more information and engineering advice please contact J&P Building Systems Ltd.

www.jp-uk.com

10

LAUNCHING NOW: A NEW WAVE BY SÉCHÉ STUDIO

Inspired by the rough and untouched landscape of the Danish West Coast, A New Wave reflects natural textures, shapes and captivating scenery. The collection strives towards tactility on a functional and sensual level that encourages you to feel the patterns of the sand, the strict lines of the grass dunes and the rhythm of the waves washing in.

The up-and-coming designers from Séché Studio, Laura Bilde and Linnea Ek Blæhr, have found inspiration in their childhood memories of the coastline when creating a collection of organic and textured carpets. With A New Wave, the tactile landscape is brought to the floor with three sensuous designs; Sand, Grass and Ocean. Multi levels in the soft construction form the sculptural patterns while the colour palette reflects the dry and delicate tones of the seaside.

www.egecarpets.com

11

MINIMAL LOOK, MINIMAL EFFORT

Until recently the range of product solutions available for glass Juliette balcony applications was fairly limited, with an amalgamation of products often being used to create the installation. Although often practical and simple using glass clamps, point fixings, or bespoke metalwork, the overall design can be spoilt by the fixings, disrupting the eye visually and distracting from the 'all glass' look.

The SKYFORCE Juliet Balcony System by ONLEVEL has quickly become a firm favourite since its launch in 2016. It's early uptake by bright eyed Architects and contractors lead to increased recognition and admiration of the systems sleek appearance and capability for providing aesthetically pleasing building exteriors.

www.onlevel.com

12

J&P BALCON®

Insulated Steel Balcony Connection System offers easy balcony positioning tolerance with excellent load capacity. Thermal insulation performance to meet part L.

- Designed for your specific balcony to concrete connection
- Cost-effective, high quality components
- Excellent thermal insulating properties
- Easy to set into position with no need to cut edge shutter
- High load performance with fast installation
- Very low deflection at the connection to the structure
- Now an approved LABC Registered Detail.

For more information and engineering advice please contact J&P Building Systems Ltd.

www.jp-uk.com

TWINSON DECKING FROM DEEPLAS

ELEGANT, LONG-LASTING DECKING, WITH RESPECT FOR NATURE



HIGH SLIP RESISTANCE



LOW MAINTENANCE



SPLINTER RESISTANT

For more information
call Hazel Verschuere:
07718340731

Quality you
can feel



dæeplas



PALETTONE

Discover a new world of colour

For colour, for choice, think Palettone.
Commercial homogeneous flooring in
a spectrum of 50 shades.

Order free samples from
www.polyflor.com/palettone



English Garden & Woodland Air