



RWinvest

KINGS DOCK MILL
Construction Update
April 2018

Kings Dock Mill

Hurst Street, L1 8DN

Zone 1:

- All internal wall 1st fixed up to the 10th floor. Only the penthouse remains.
- Progressing with 1st fix M&E – all complete up to the 4th floor.
- All punch windows fitted – frames, EPDM and glazing.
- Curtain wall progressing to Hurst Street – with a view to all CW to Zone 1 being complete within 5 weeks
- Rendering to the courtyard due to start this week – all materials on site.
- 2nd fix boarding and ceilings due to start W/C 14/05/18 with a view to start plastering towards the end of May.
- Kitchens and door sets due to be ordered W/C 07/05/18.
- Brickwork on going – 25% complete. 2No gangs currently working on 2No elevations.

Zone 2:

- SFS and plywood complete to the courtyard elevation.
- Punch windows due to be fitted to the courtyard elevation (frames, EPDM & glazing) by W/E 11/05/18
- Agilia 75mm concrete pour to floors on going (3 floors complete) with a view to all 10 floors being complete by 11/05/18.
- 1st fix drylining due to start 07/05/18
- SFS on going to the Hurst Street elevation – 60% complete.
- Joisting on going to duplex apartments to the GF and to the 10th.
- Joisting to balconies – 90% complete.
- All fire protection complete.
- Roof works due to start 08/05/18 – 2-3 weeks to complete (weather permitting)

Zone 3:

- Steel frame and 200mm concrete floors – 60% complete, with a view for the whole of the frame and planks to be complete by W/E 18/05/18
- Sub brickwork and drainage – complete, with a view to prepare and pour the GF slab – W/C 14/05/18
- Fire protection to steel to start 08/05/18
- Roof works to progress immediately from Zone 2 completion.

Zone 4:

- Stair core 1, Stair core 2 and the Lift risers 1, 2 and the meter riser – craned into position up to the 3rd floor. Stairs fitted to the 3rd floor.
- Steel due to start (to stitch into the cores) – 03/05/18.
- Floors due W/C 08/05/18
- Next lift of stair and lift cores & stairs from the 4th floor to the 6th floor due 14/05/18.
- Due to the meticulous construction process with the cores, stairs, steel and floors – Zone 4 structure is due to be complete middle to end of June.
- 3No lifts on order with a 12 week lead in time.

Zone 5:

- Due to accelerate steel and floor installation with a 2nd crane and erection gang end of May / beginning of June.

General

- Utilities – electric and gas designs approved. Power on scheduled for October 2018. Water designs imminent.
- 95% of all sub-contractor packages are let.
- All punch windows, sliding doors & curtain wall are manufactured up to Zone 5 and stored – ready for call off. As soon as openings are formed to the building envelope – they will be filled almost immediately.

If you need any further information in the meantime, please call us at the following offices:

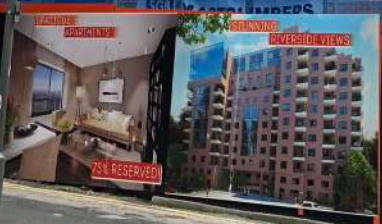
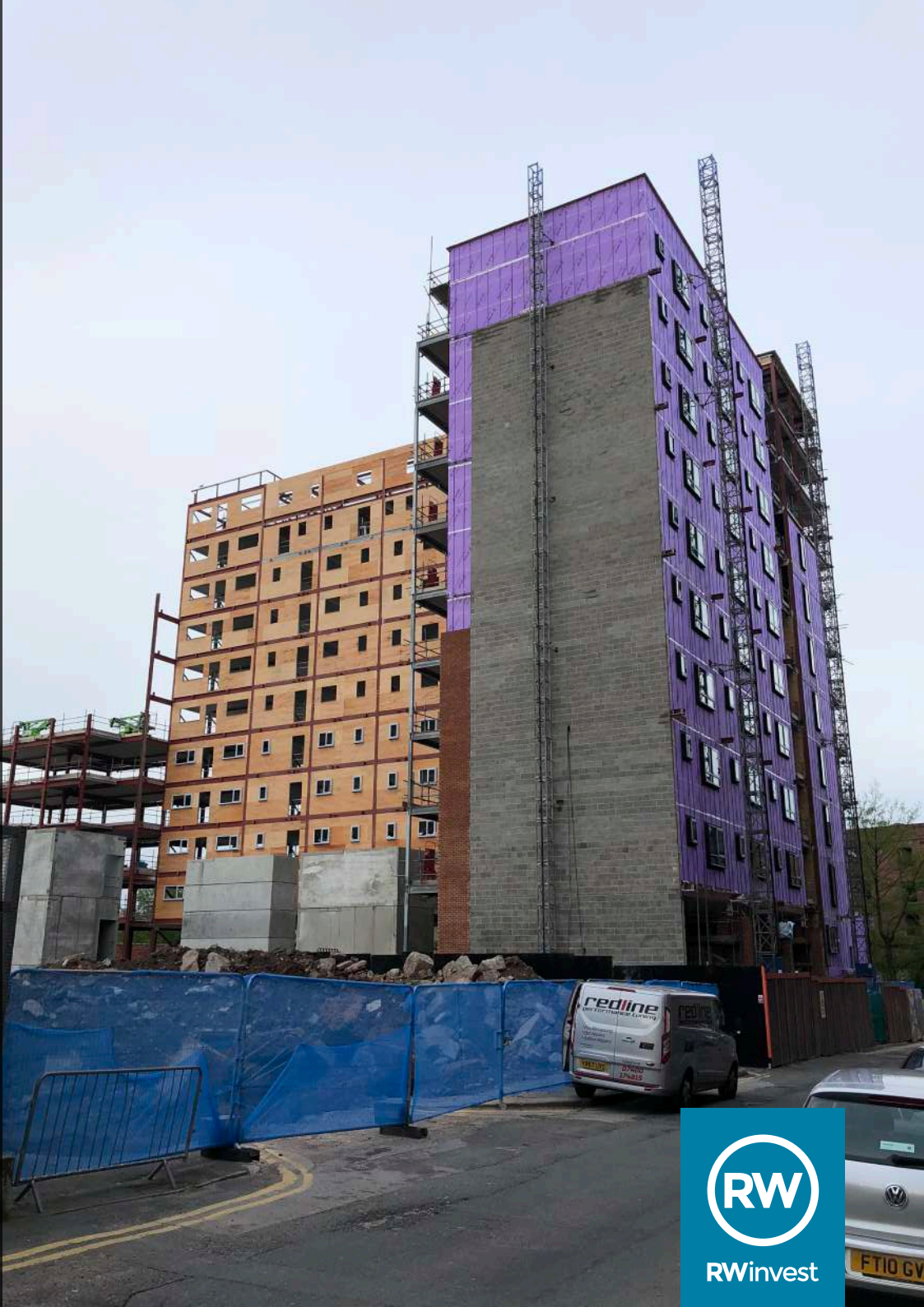
Liverpool +44 (0)151 808 1250

London +44 (0)207 100 4141





RWinvest



楊氏地產集團
YPO DEVELOPMENTS LTD
OFFICE: 0151 728 8662
WE ❤️ MCR
KINGS DOCK MILL
A NEW DEVELOPMENT OF LUXURY HOMES
IN THE HEART OF LIVERPOOL ONE

RW
RWinvest