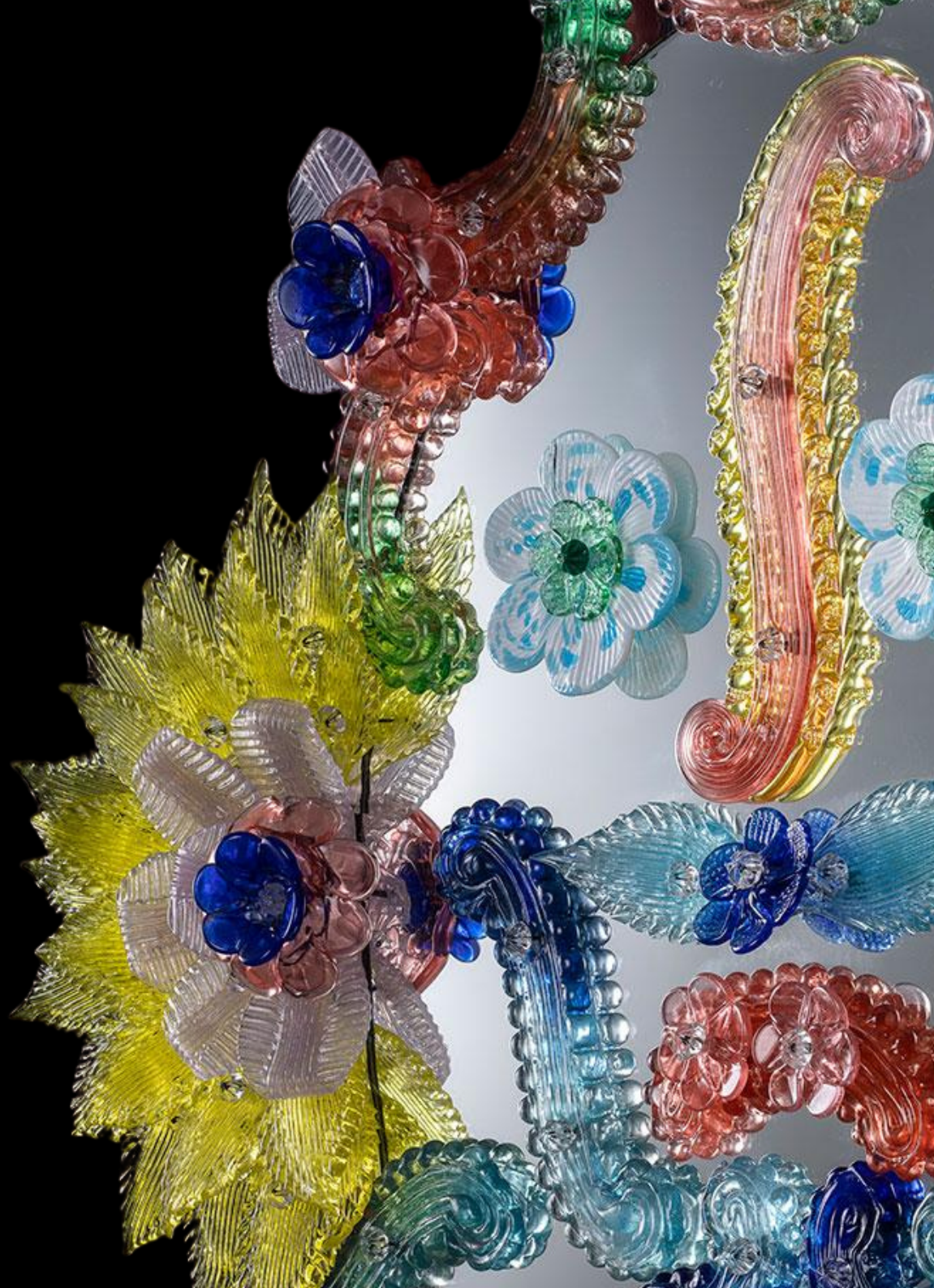




MIRROR
COLLEZIONE

Bespoke Mirrors

There are many ways to shed light on a room but if you're looking for a unique statement lighting design, then consider a beautifully lit floor standing or wall mounted decorative handmade designer mirror.



Make it Personal

This mirror consists of floral decoration. The art work is designed, realized and assembled by our mirror artisans, glass masters, carpenters, with attention to detail. Our mirror's can be chosen in various colors and Dimensions.

Clear



Gold



Black



Grey



Fume



Amber



Blue



Aquamarine



Green



Yellow



Red



Amethyst



ANNABELS
Located in Mayfair

This was one of the recent challenging projects at this famous venue in London's Berkeley Square.

There is a huge wall of roses for the female vanity created in various shades of pinks and Verde Leaf greens that are meticulously lit with hidden halo lighting.

The Main Bar area had over 30 full size palm trees where the leaves had to be detailed in translucent champagne glass

we also created cove glass leaf lighting with massively challenging bar canopy that was intricately put together and internally lit.

We are proud to have been the main glass artists for the development of this project.





Grandeur and organics composing a wonderful and wildly border of petals and leaves, back lit, bring to life the detail of the artisan hand made silver pearl glass petals and leaves, with slight hints of emerald green. This lavishly designed hallway mirror has the elegance of a 20th century pièce des résistance. A uniquely detailed design that brings warmth and organic beauty into a deservedly elegant space...

MIRROR
COLLEZIONE

ARGENTO ANGELICA







A mirror
reminiscent of a
romantic boudoir,
ornate artisan
glass organic
flavours, lavishly
rich, generously
detailed in hand-
blown petals and
leaves, pearl glass
with silver dust, a
profusion of
extravagance now
available to order.

MIRROR
COLLEZIONE







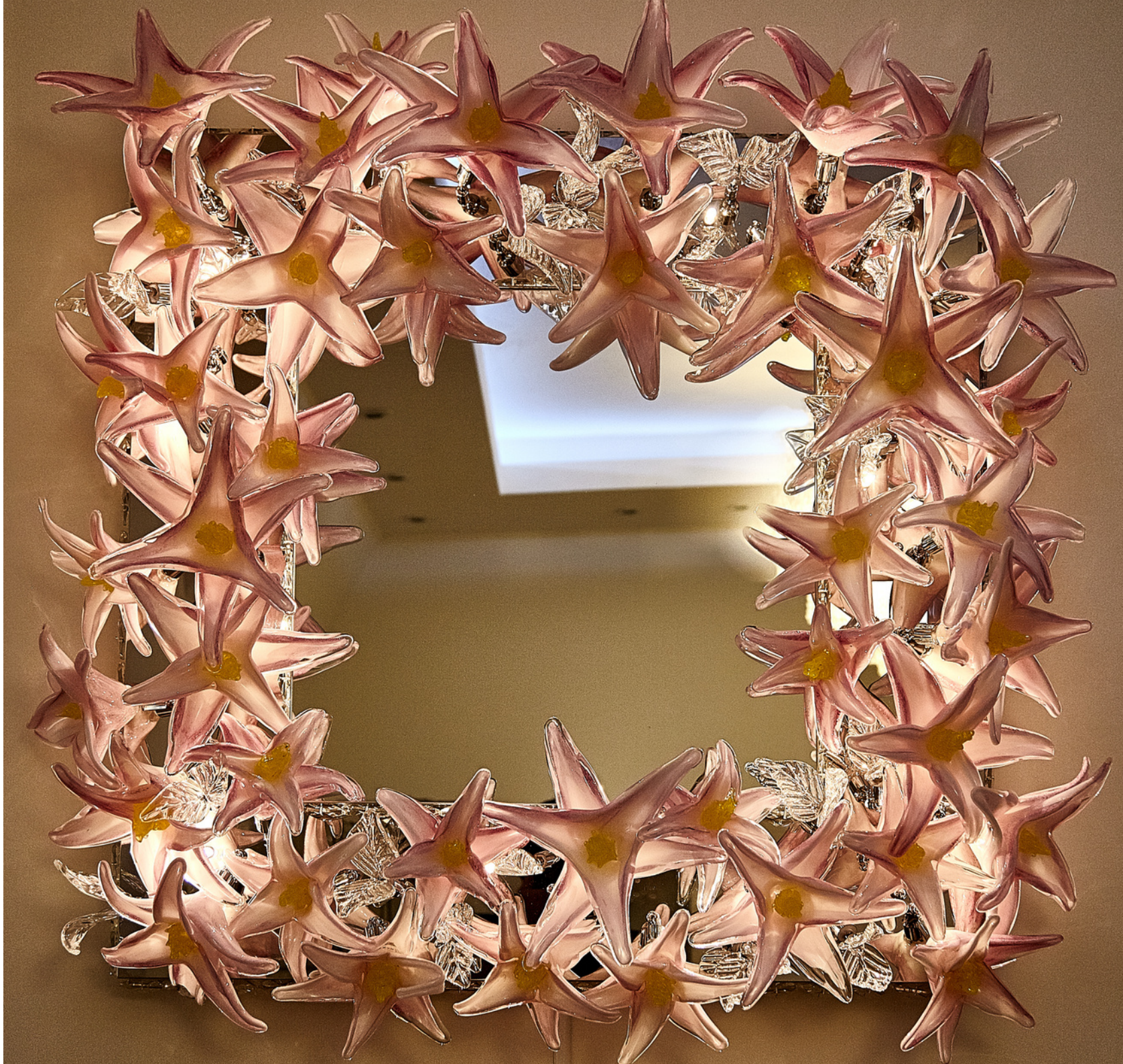
*ADAMO
JUNIOR*

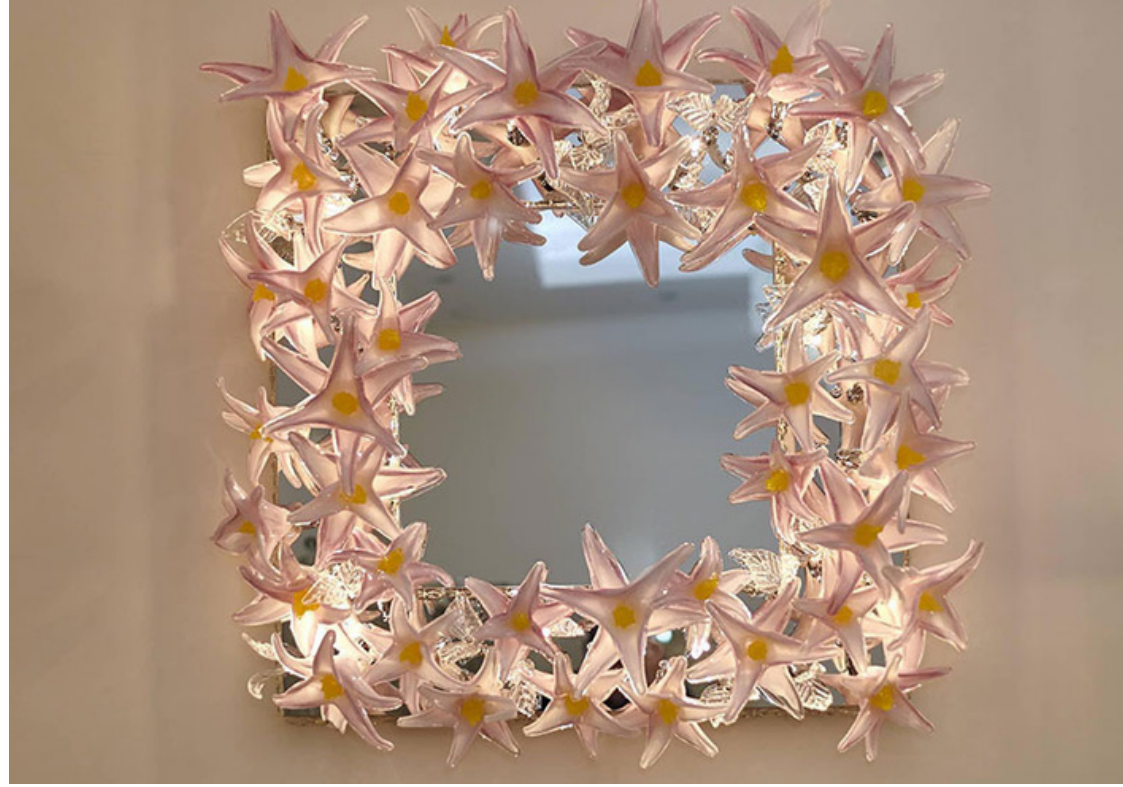
MIRROR
COLLEZIONE





A new generation
of art glass
mirrors – an
illuminated glass-
blown delicacy,
this is a totally
unique piece of art
that's incredibly
beautiful and
functional. Detail:
hand-sculpted
milky/pink leaves
with crystal
Detail.







Sculpted crystal with embellished etching, a totally bespoke creation still carrying the mark of the Venetian elegance and sophistication.

Detail:
Murano crystal, antique acid etching detail, floral ribbon detail with pin-back flowers in pearl dichroic glass with silver





Elegance encompassing a Venetian era of decadence and extraordinary decoration. Inspiring and mood setting, this mirror has the quality to capture a time that will never escape our past...



Florence II





MIRROR
COLLEZIONE





The mirror consists of floral decoration. The artwork is designed, realized and assembled by our mirror artisans, glass masters, carpenters, with attention to details.





Elegance meets classic lines, a bespoke creation that's both worthy of a grand room, discreetly stating its presence of worth and prestige.





Rocco Borghese

SENSO DELL'ARTE 2020

North London Showroom

59 Park Road

London

N8 8DP

020 8348 0456

Outside UK: +44 208 348 0456

U.K Showrooms

www.RoccoBorghese.com

Chelsea Showroom

488 Kings Road

London

SW10 0LF

020 8348 0456

Outside UK: +44 208 348 0456