

The background features a collage of vintage-style illustrations in blue ink on a yellow-green textured surface. On the left, there are stylized, overlapping leaf shapes. In the center, a cluster of bell-shaped flowers hangs from a stem. To the right, a small boat with a person inside is shown on a body of water, with a waterfall-like structure below it. The overall aesthetic is reminiscent of early 20th-century decorative arts.

# Dar mi y a a a

The resonance of the unsaid

Fall Winter 26

[tracesofme](https://www.instagram.com/tracesofme)

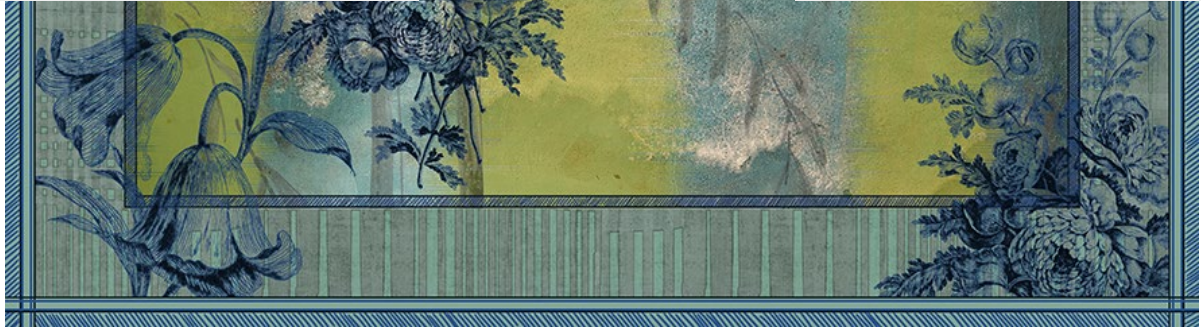




Coat Plume Weed  
**Ref. 975 265 001**  
100% Cashmere



Coat Plume Sapphire  
**Ref. 975 265 003**  
100% Cashmere





Dress Simple Chinoiserie  
Multicolour  
**Ref. 908 265 005**  
100% Silk



Shirt Isabella Chinoiserie  
Multicolours  
**Ref. 908 265 028**  
100% Silk



Cardigan Lal Ombre  
Yak Turquoise | Cherry  
**Ref. 975 265 010**  
55% Cashmere | 45% Silk



Trousers Peter Stripes  
TM Rouge | Jadeite  
**Ref. 908 265 013**  
100% Silk



Tunic Grasshoper Stripes  
TM Rouge | Jadeite  
**Ref. 908 265 007**  
100% Silk



Shirt Botanic Collar  
Checks  
Steel  
**Ref. 908 265 020**  
100% Silk



Trousers Oriental  
Checks  
Steel  
**Ref. 908 265 016**  
100% Silk





Top Key Turtle Neck  
Yak Turquoise  
**Ref. 975 265 036**  
55% Cashmere | 45% Silk



Top Key Turtle Neck  
Dusty Jade  
**Ref. 975 265 035**  
55% Cashmere | 45% Silk



Top Key Turtle Neck  
Azure  
**Ref. 975 265 034**  
55% Cashmere | 45% Silk



Top Key Turtle Neck  
Chartreuse  
**Ref. 975 265 033**  
55% Cashmere | 45% Silk





Dress Simple Stamp  
Multicolour  
**Ref. 908 265 033**  
100% Silk



Cardigan Lal Ombre  
Chartreuse | Navy  
**Ref. 975 265 009**  
55% Cashmere | 45% Silk



Shirt Geisha  
Natural **Ref. 908 265 019**  
18% Silk | 82% Cotton



Trousers Oriental Checks  
Dried Herbs  
**Ref. 908 265 017**  
100% Silk



Shirt Botanic Collar Checks  
Dried Herbs  
**Ref. 908 265 021**  
100% Silk







Shirt Anna Long Sleeves Cross  
Dried Herbs | Sapphire  
**Ref. 908 265 023**  
18% Silk | 82% Cotton



Shirt Anna Long Sleeves Cross  
Dusti Orchid | Azure  
**Ref. 908 265 025**  
18% Silk | 82% Cotton



Shirt Anna Long Sleeves Cross  
Jadeite | TM Rouge  
**Ref. 908 265 024**  
18% Silk | 82% Cotton



Shirt Simple Stripes  
Azure | Dusty Orchid  
**Ref. 908 265 030**  
100% Silk



Shirt Simple Stripes  
Dried Herbs | Sapphire  
**Ref. 908 265 031**  
100% Silk



Shirt Simple Stripes  
Tm Rouge | Jadeite  
**Ref. 908 265 029**  
100% Silk



Shirt Simple Stripes  
Orchid | Jade  
**Ref. 908 265 032**  
100% Silk





Top Key Turtle Neck Stripes  
Dusty Orchid | Azure  
**Ref. 975 265 031**  
55% Cashmere | 45% Silk



Top Key Turtle Neck Stripes  
Yak Turquoise | Cherry  
**Ref. 975 265 030**  
55% Cashmere | 45% Silk



Top Key Turtle Neck Stripes  
Dried Herbs | Navy  
**Ref. 975 265 032**  
55% Cashmere | 45% Silk



Top Key Turtle Round Neck  
Light Plum  
**Ref. 975 265 028**  
55% Cashmere | 45% Silk



Top Key Turtle Round Neck  
Dried Herbs  
**Ref. 975 265 029**  
55% Cashmere | 45% Silk



Top Key Turtle Round Neck  
Moonlight  
**Ref. 975 265 027**  
55% Cashmere | 45% Silk





Tunic Grasshoper Stripes  
Shappire I Dried Herbs  
**Ref. 908 265 009**  
100% Silk

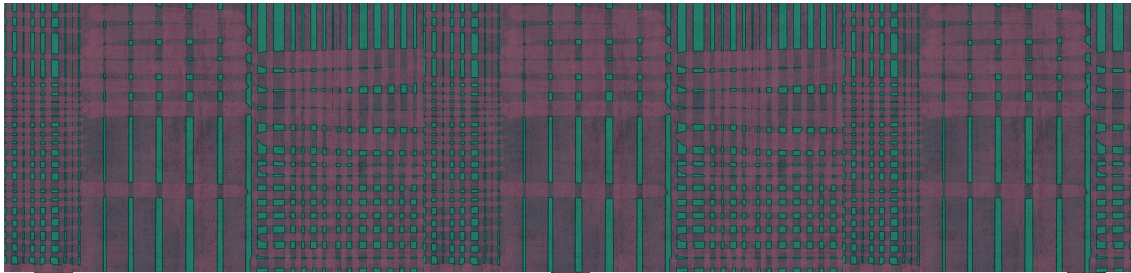


Cardigan Long Maxi  
Steel  
**Ref. 975 265 008**  
100% Yak



Trousers Peter Stripes  
Shappire I Dried Herbs  
**Ref. 908 265 015**  
100% Silk





Shirt Botanic Collar Jardin  
Multicolour  
**Ref. 908 265 022**  
100% Silk



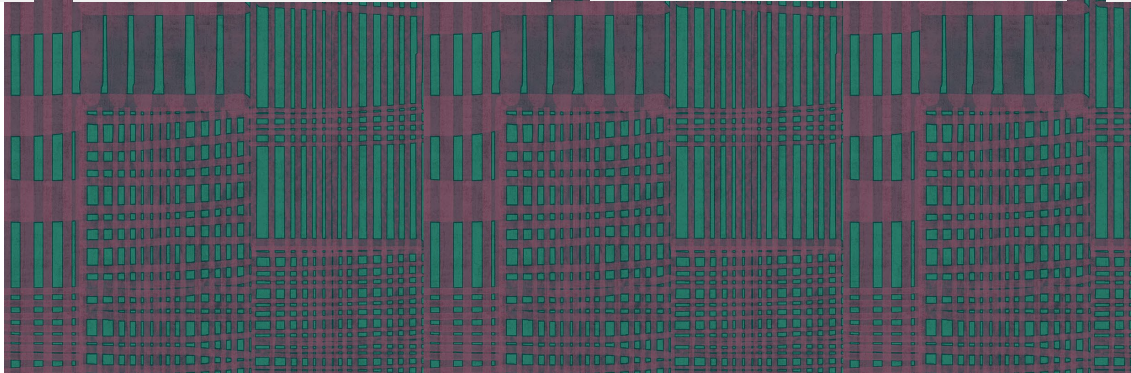
Cardigan Long Maxi  
Light Plum  
**Ref. 975 265 007**  
100% Yak



Coat Plume Dusty Jade  
**Ref. 975 265 002**  
100% Cashmere



Trousers Oriental Jardin  
Multicolour  
**Ref. 908 265 022**  
100% Silk





Tunic Grasshoper Stripes  
Azure | Dusty Orchid  
**Ref. 908 265 008**  
100% Silk



Shirt Isabella Dhalias  
Multicolours  
**Ref. 908 265 026**  
100% Silk



Trousers Peter Stripes  
Azure | Dusty Orchid  
**Ref. 908 265 014**  
100% Silk





Jumper Shell Round Neck  
Light Plum  
**Ref. 975 265 018**  
100% Yak



Jumper Shell Round Neck  
Burnt Siena  
**Ref. 975 265 019**  
100% Yak



Jumper Shell Round Neck  
Dried Herbs  
**Ref. 975 265 020**  
100% Yak





Shirt Simple Stripes  
Azure | Dusty Orchid  
**Ref. 908 265 030**  
100% Silk



Cardigan Lal Ombre  
Azure | Plum  
**Ref. 975 265 011**  
55% Cashmere | 45% Silk



Trousers Peter Stripes  
Azure | Dusty Orchid  
**Ref. 908 265 014**  
100% Silk





Dress Simple Dahlias  
Multicolour  
**Ref. 908 265 006**  
100% Silk



Trousers Peter Stripes  
Azure | Dusty Orchid  
**Ref. 908 265 014**  
100% Silk



Tunic Grasshoper Stripes  
Azure | Dusty Orchid  
**Ref. 908 265 008**  
100% Silk





Jumper Shell V Neck  
Weed  
**Ref. 975 265 015**  
100% Yak



Jumper Shell V Neck  
Navy  
**Ref. 975 265 017**  
100% Yak



Jumper Shell V Neck  
Steel  
**Ref. 975 265 016**  
100% Yak



Silk Scarf Square  
Stamp  
Multicolour  
(110X110cm)  
**Ref. 908 267 001**  
100% Silk



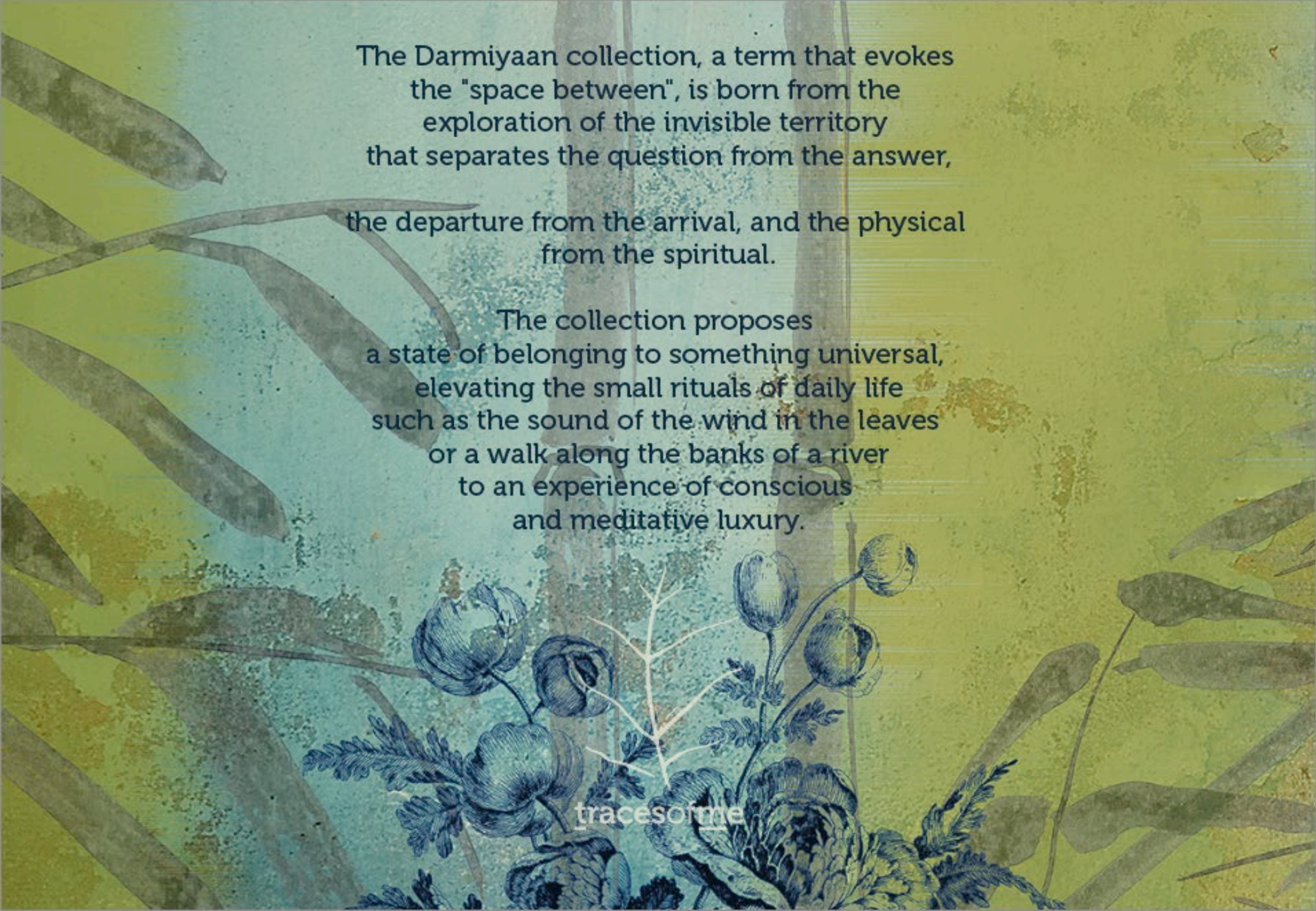
Silk Scarf Square  
Patch  
Multicolour  
(110X110cm)  
**Ref. 908 267 003**  
100% Silk



Silk Scarf Square  
Ashgabat  
Multicolour  
(110X110cm)  
**Ref. 908 267 004**  
100% Silk



Silk Scarf Square  
Lake  
Multicolour  
(110X110cm)  
**Ref. 908 267 002**  
100% Silk



The Darmiyaan collection, a term that evokes the "space between", is born from the exploration of the invisible territory that separates the question from the answer, the departure from the arrival, and the physical from the spiritual.

The collection proposes a state of belonging to something universal, elevating the small rituals of daily life such as the sound of the wind in the leaves or a walk along the banks of a river to an experience of conscious and meditative luxury.

tracesofme

