



# ELEMENT - The Quarter Construction Update

March 2023



## March 2023

**At ELEMENT - The Quarter, the ground floor slab, scaffolding and mast climber access are now all completed. Weatherboarding and the internal staircase are now approaching completion.**

Internally, major progress has been seen to both 1st and 2nd fix works. Kitchens continue to be installed, partition walls are ongoing, and flooring continues. Decoration works have now reached the halfway mark.

## Summary of Works Progressed - Sub-Structure and Super Structure

- Retaining walls and concrete beam foundations are now 90% complete
- Ground floor slab construction is complete
- The internal staircase structure is fast approaching completion
- Scaffolding and mast climber access is now complete
- Structural framework forming the external walls has also completed
- Weatherboarding has progressed to 98% completion
- External windows, doors and curtain walling are now 98% complete

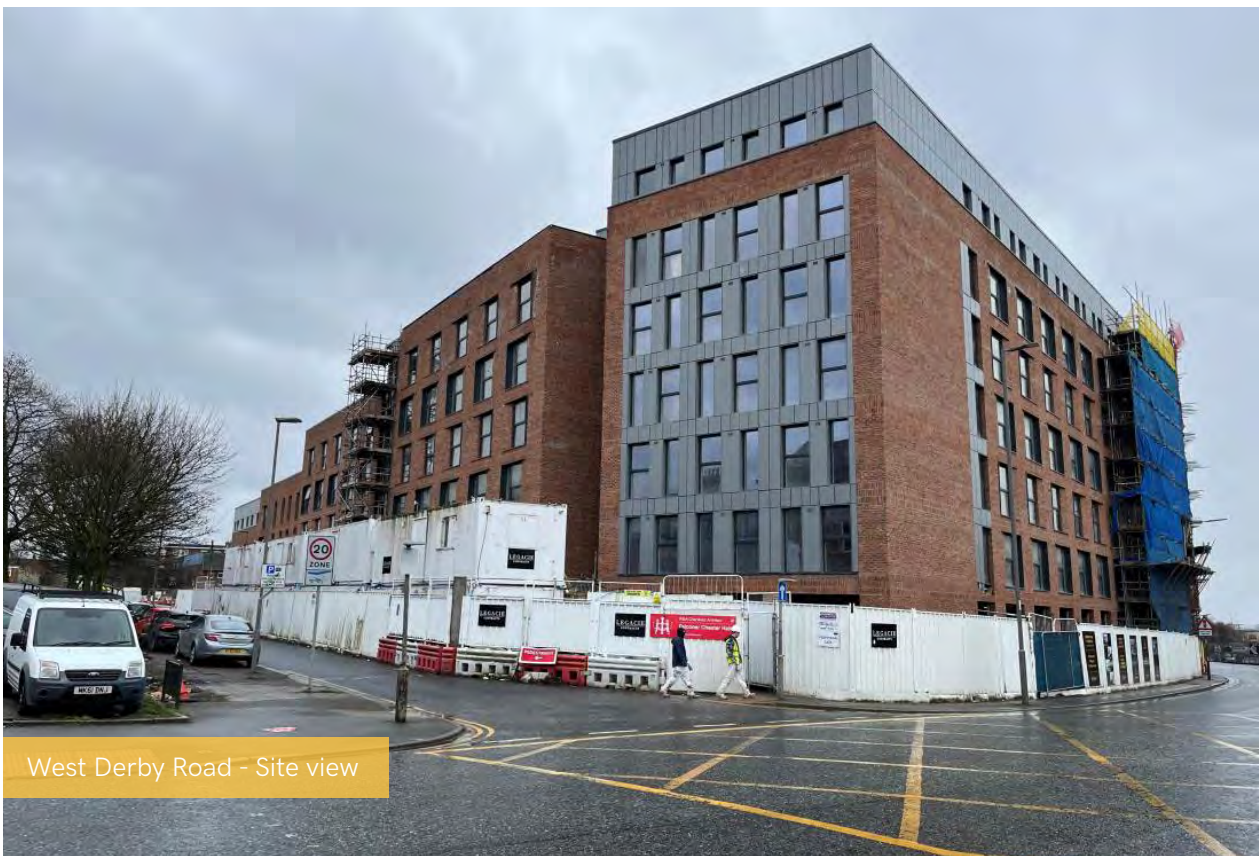
## Summary of Works Progressed - Internal Fit Out

- The lift has been installed to 55%
- Partition wall installation is now 82% complete
- Apartment ceiling installation is also 82% complete
- Plaster finished to walls and ceilings are 68% progressed
- 1st fix plumbing and heating is 87% complete with 1st fix electrical works 78% progressed
- 2nd fix electrical is 54% complete, with plumbing and heating now 46% progressed
- Kitchen units and appliance installation continues
- Doorframes are now 53% progressed
- Skirting and architrave are ongoing
- Wall and floor tiling are 47% progressed
- Carpet and floor finishes are 59% complete
- Doors and ironmongery are also 59% complete
- Decorations are now halfway complete
- General fixtures and fittings are 10% complete



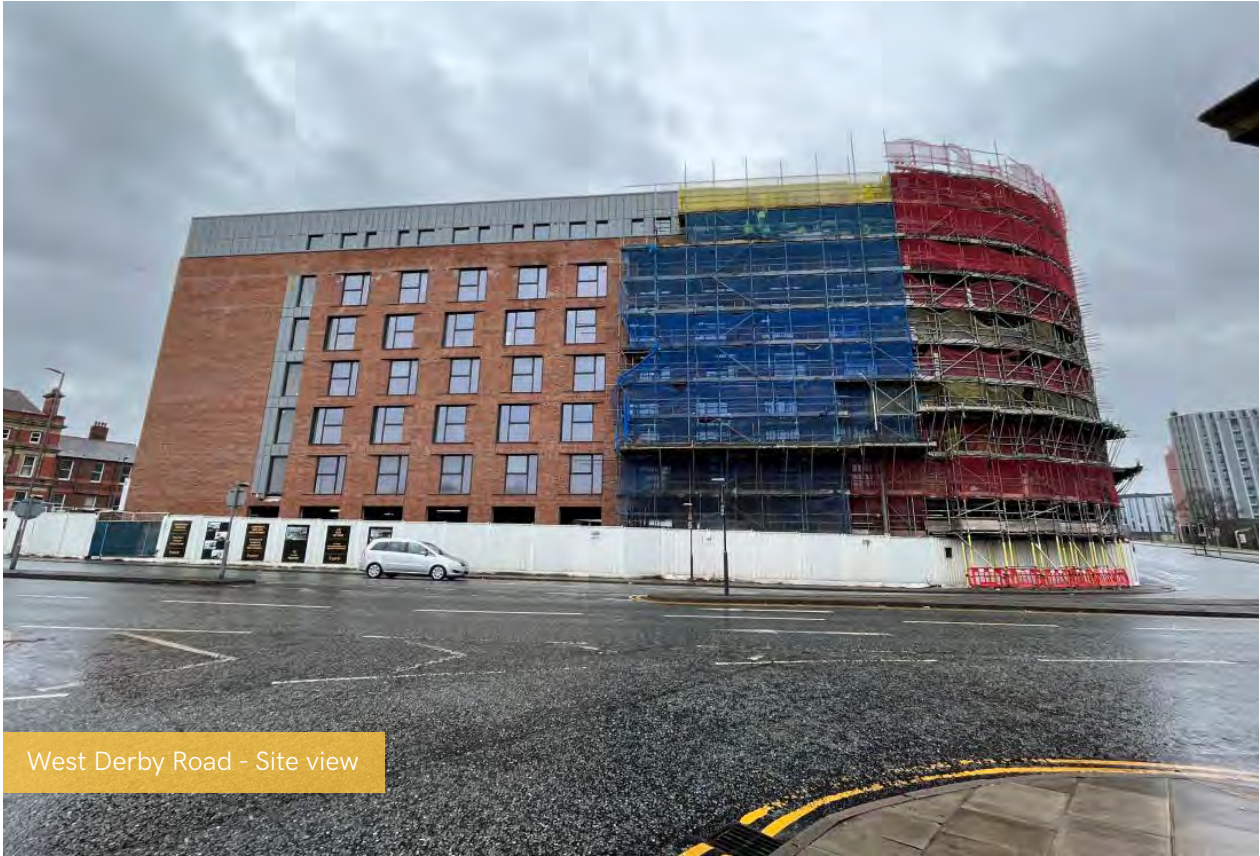


Walker Street - Site view



West Derby Road - Site view





West Derby Road - Site view



Residential Block - Render decoration complete





Student Wing - Cladding installation on-going

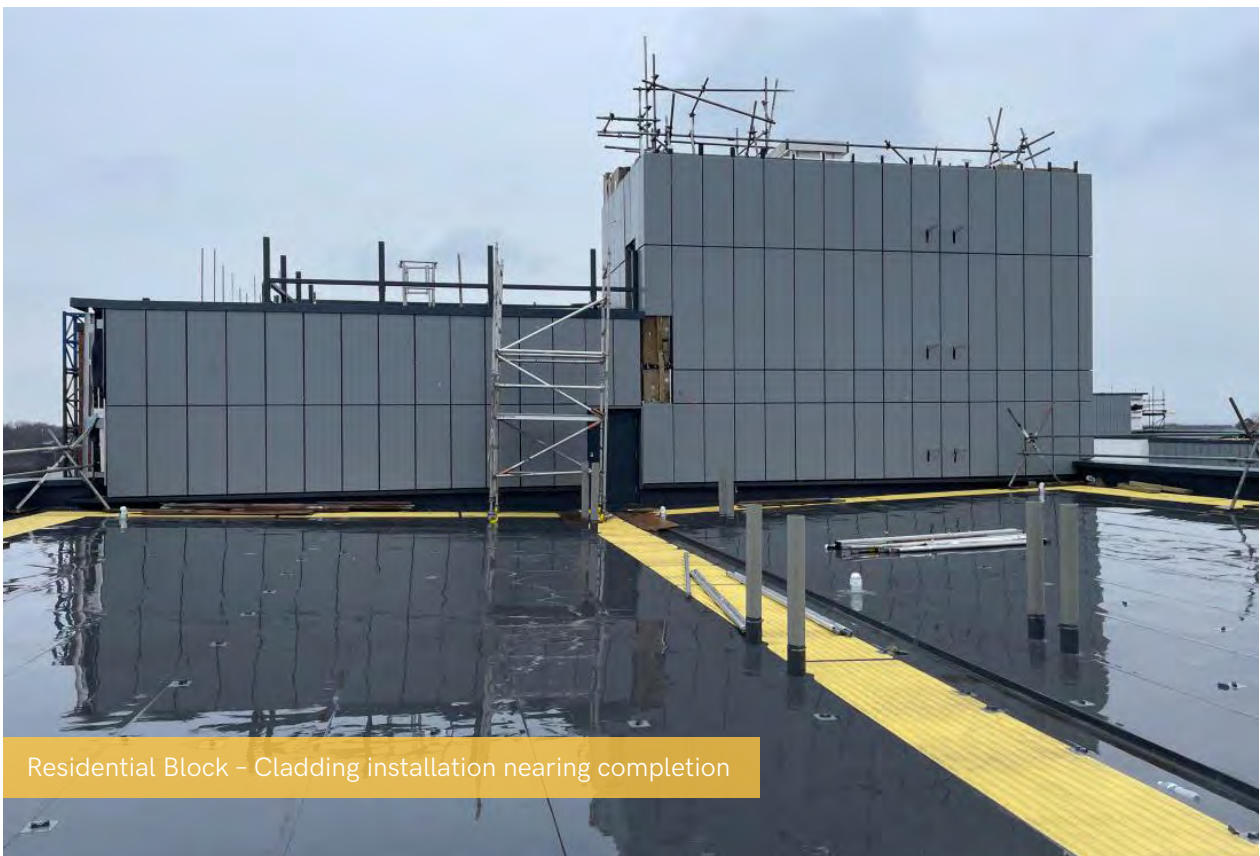


Capping installed to brickwork





Window sill detail

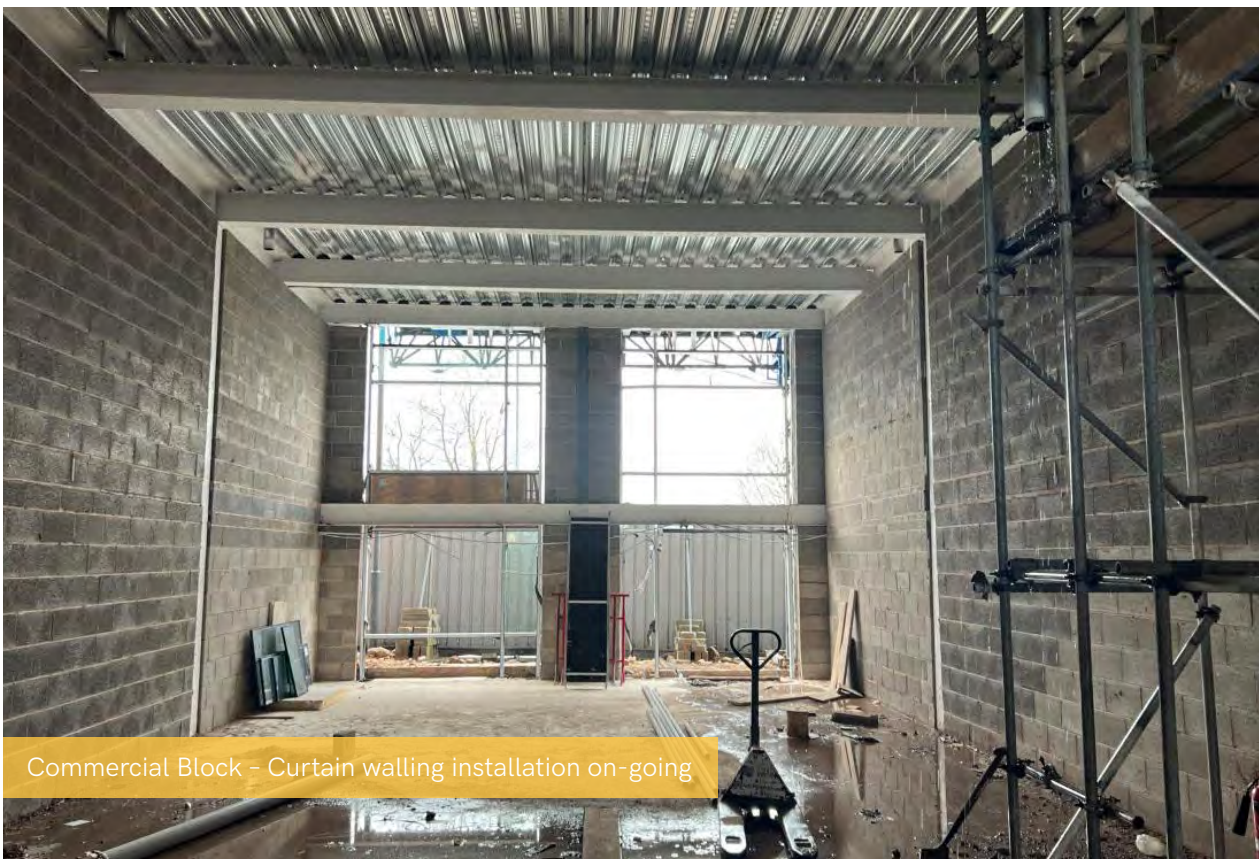


Residential Block - Cladding installation nearing completion





Commercial Block - Window unit installed

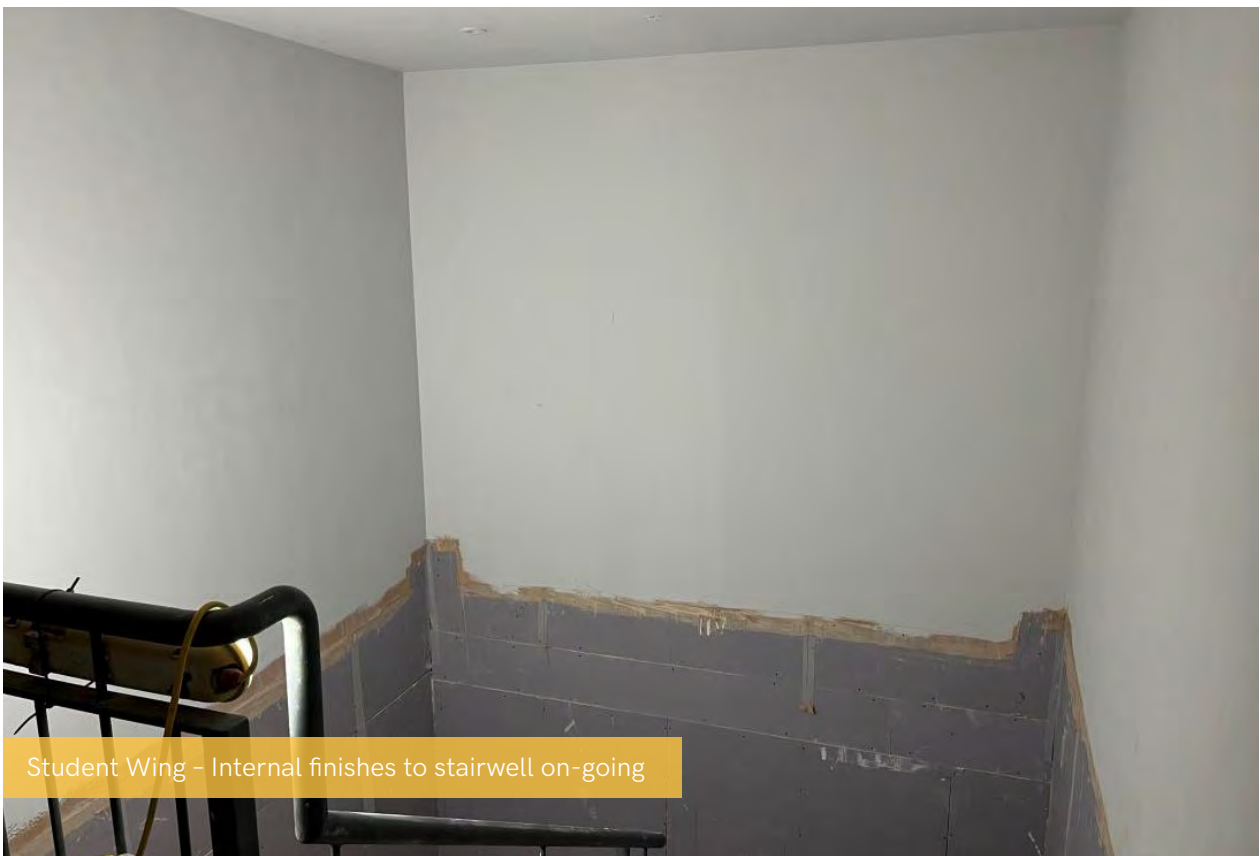


Commercial Block - Curtain walling installation on-going





Residential Block - Pattress installation and boarding of stair core walls

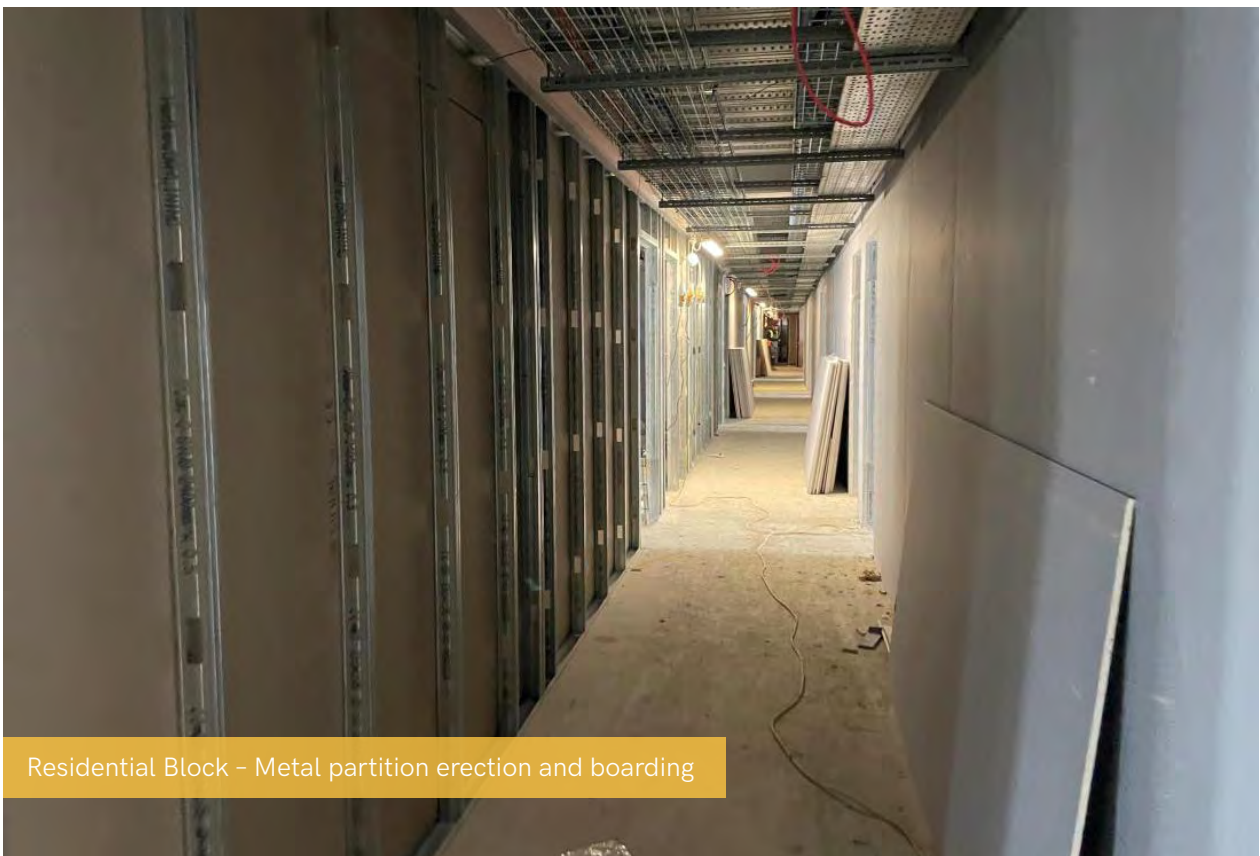


Student Wing - Internal finishes to stairwell on-going





Residential Block – Metal balustrade installation on-going

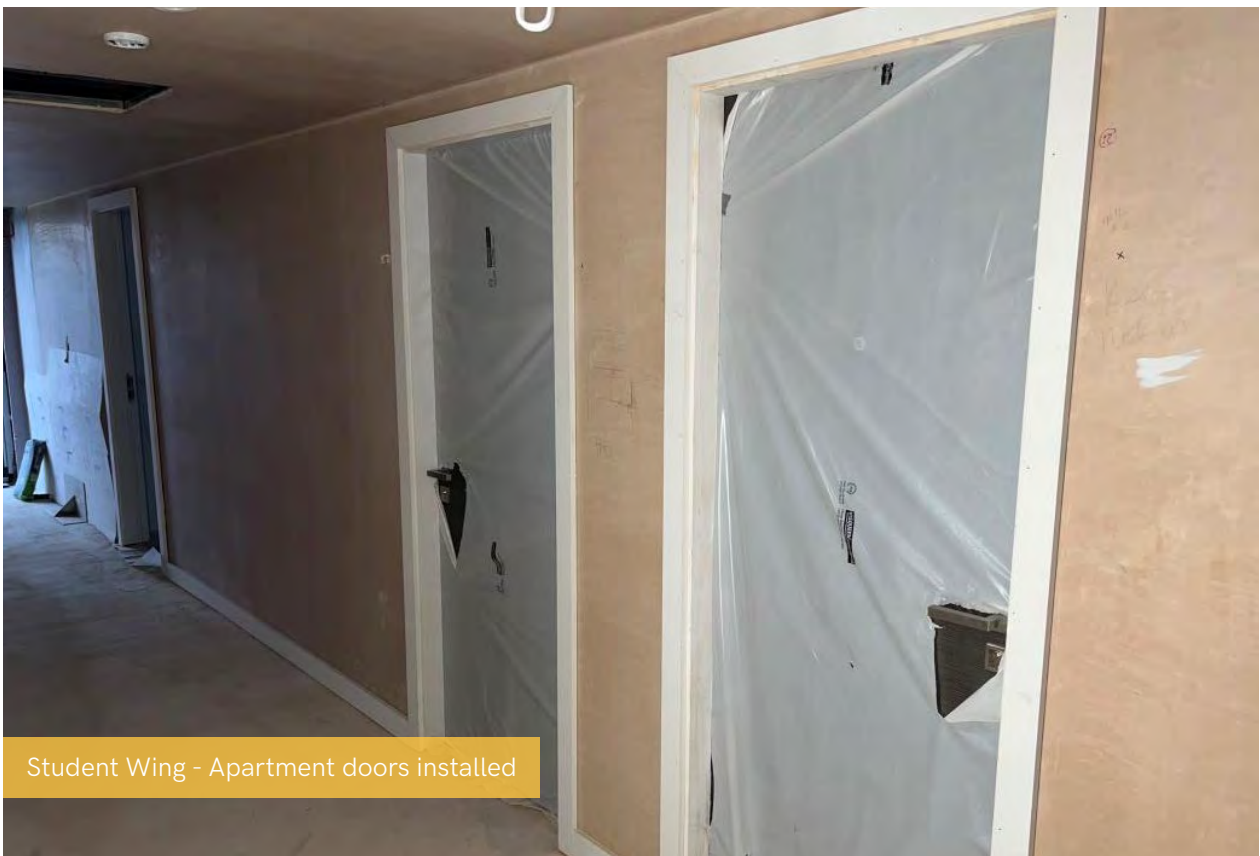


Residential Block – Metal partition erection and boarding





Residential Block - Metal partitions, insulation and parrness installation

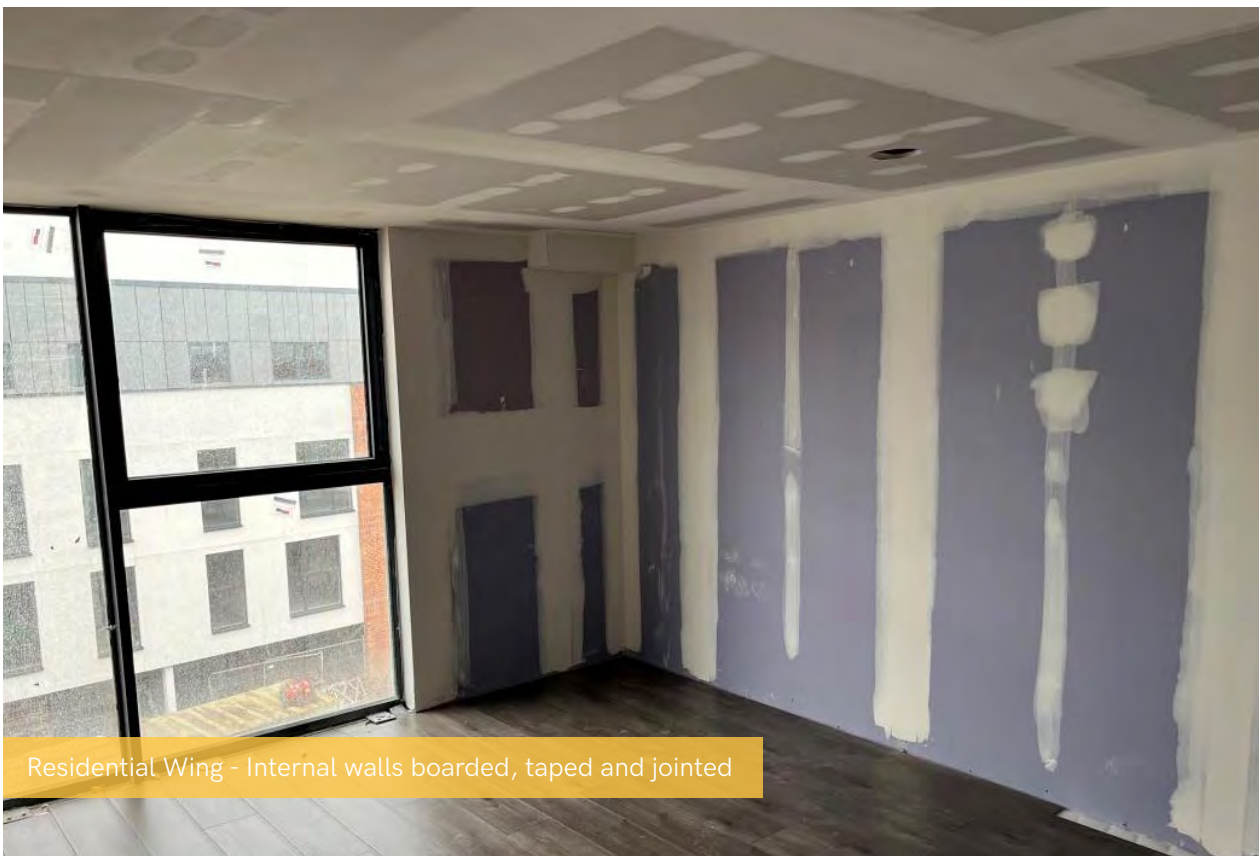


Student Wing - Apartment doors installed





Student Block - Plastering on going

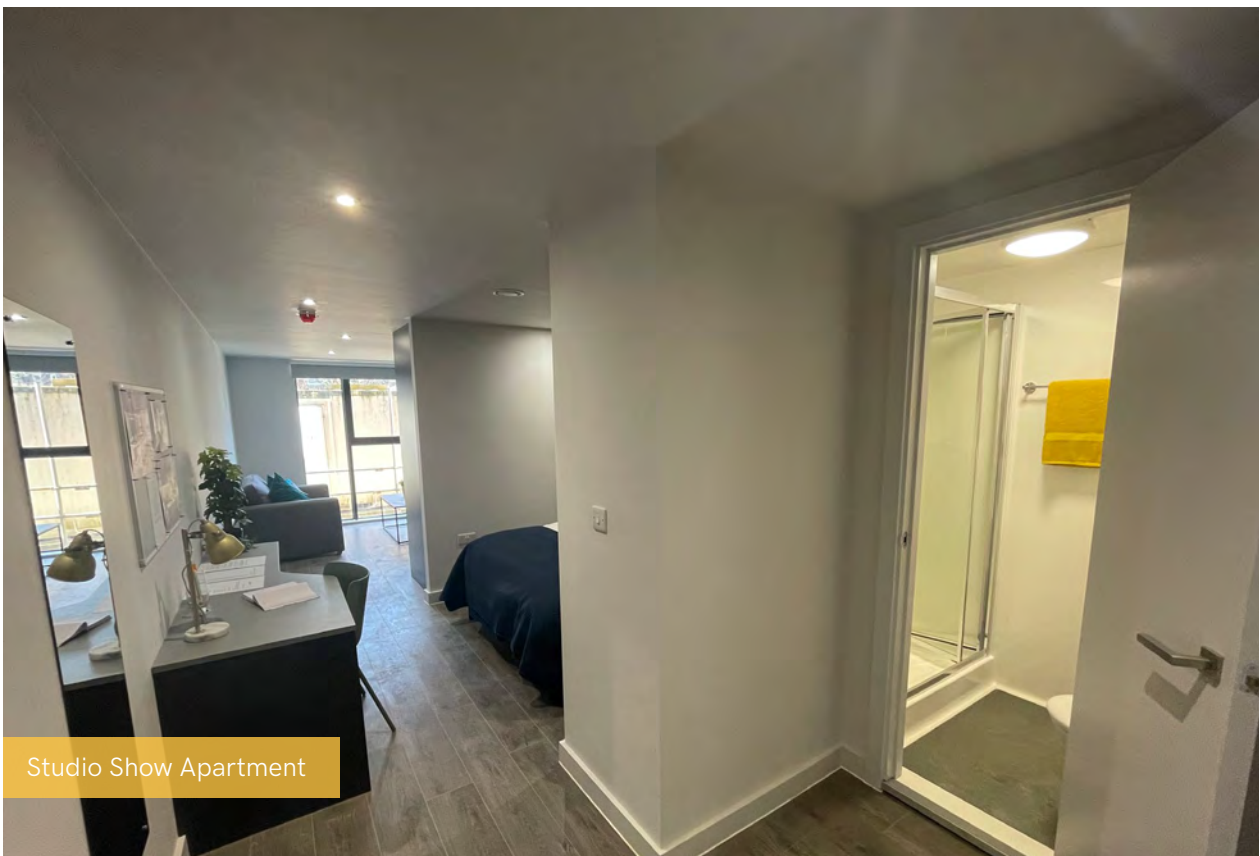


Residential Wing - Internal walls boarded, taped and jointed





Student Block - Internal finishes on going

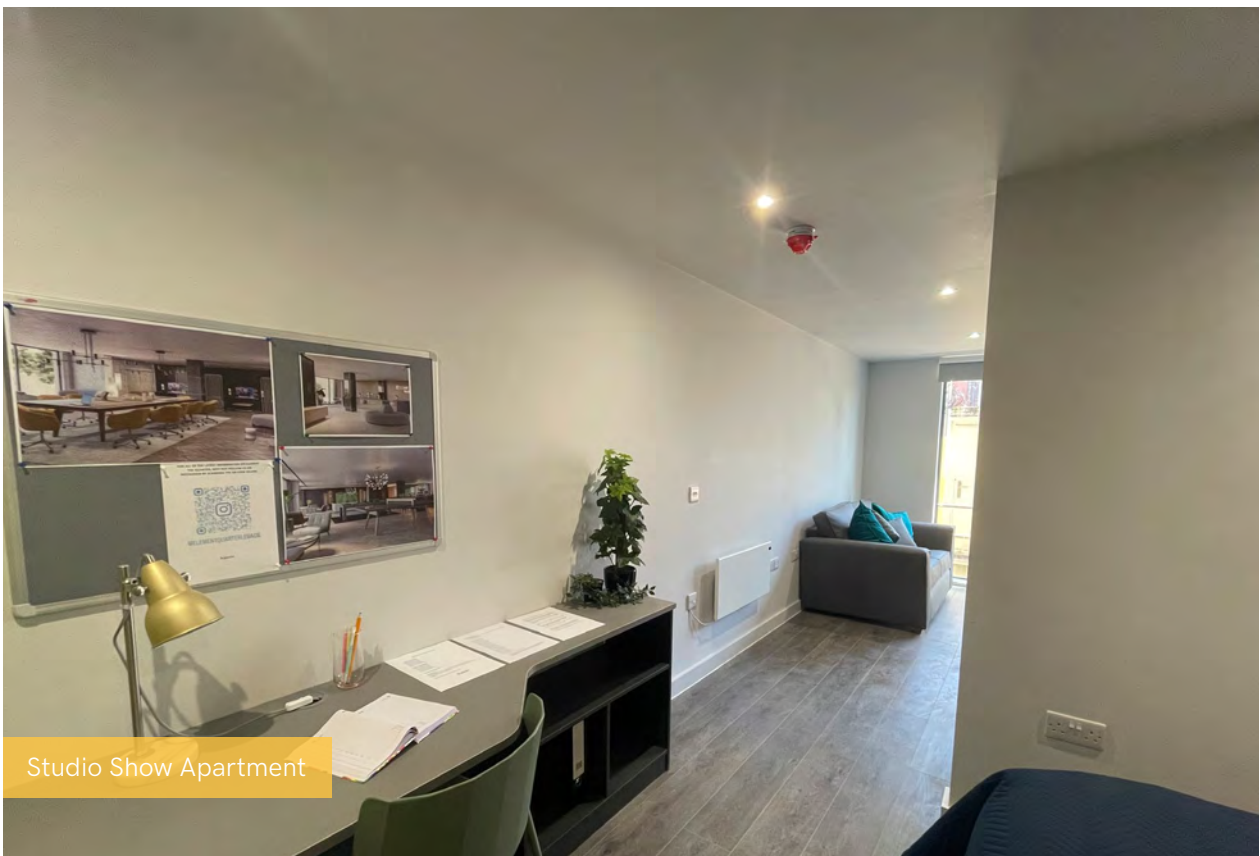


Studio Show Apartment





Studio Show Apartment



Studio Show Apartment









Studio Show Apartment



Studio Show Apartment