



RWinvest

# CROSBY GARDENS CONSTRUCTION UPDATE

July 2019



---

# CROSBY GARDENS

## CONSTRUCTION UPDATE

July 2019

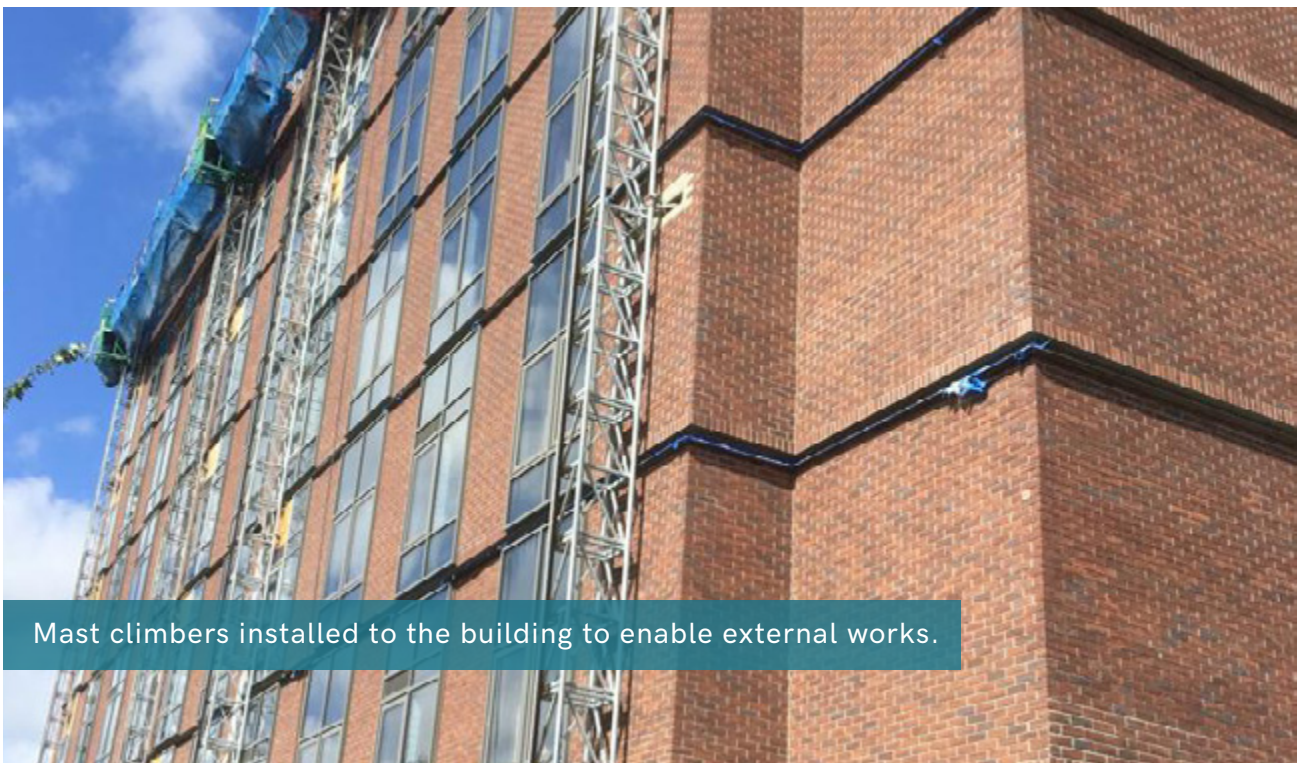
The latest construction update from the developer of Crosby Gardens in Liverpool shows that mechanical and electric first fix works are 90% complete. Second fix has begun and has progressed 10% thus far.

Internal partitions are 90% complete, window installation is 100% complete, and the firefighting lift has been installed to 75%.

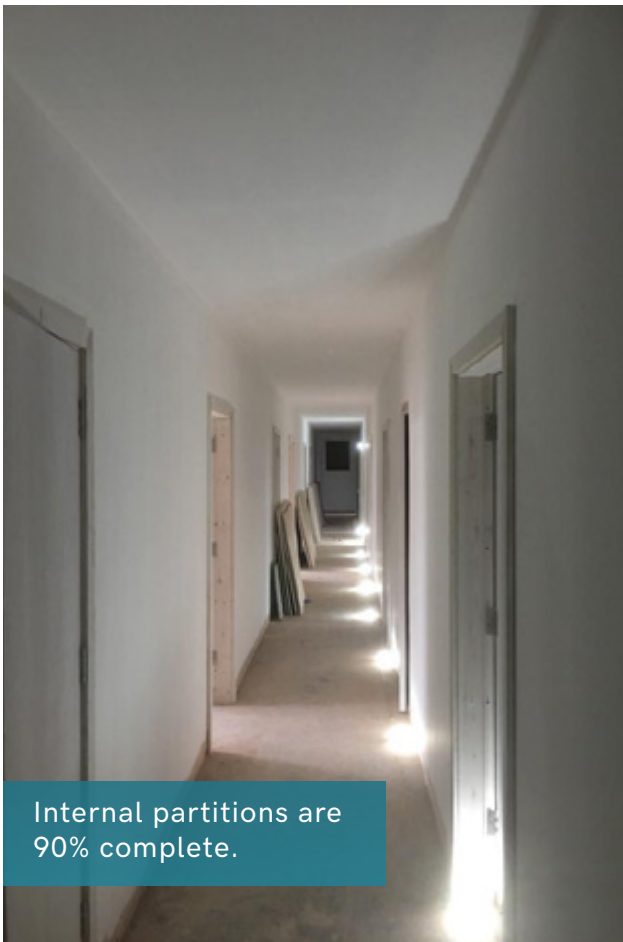
Other tasks progressed during the period include the installation of sanitaryware throughout the development which is now 50% complete, and envelope installation which has made good progress at 85% completion.

Decoration to the apartments is 65% underway and the kitchens and appliances have been 35% installed.

Additional units being added to the roof have been developed and have 50% remaining until completion.



Mast climbers installed to the building to enable external works.







**RW**invest

Liverpool +44 (0)151 808 1250

London +44 (0)207 100 4141