



ELEMENT - The Quarter Construction Update

April 2022

ELE
TH

April 2022

This month at ELEMENT - The Quarter, finalisations are being made to the underground drainage, and the steel frame structure is now nearing completion.

Another task approaching completion is the upper suspended steel frame structure, and finishing touches are being made to the fire coating steel framework. Rapid progress is also being made to the ground floor slab construction which began last month.

Summary of Works Progressed

- Clear progression of retaining walls, and concrete beam foundations
- Finalisations to underground drainage
- Halfway to floor slab construction completion
- Finishing touches to steel frame structure
- Upper suspended steel frame structure is 96% completed
- 90% completion to fire coating steel framework
- Rapid development of structural framework forming external walls
- Scaffolding and master climber access is nearing completion
- Flat roof structure is 88% progressed
- Over halfway completion of flat roof coverings including balconies
- Weatherboarding is 80% complete
- Clear development to external windows/doors and curtain walling
- External wall insulation and render now 60% complete
- 35% completion to Mansafe system

View the Latest
ELEMENT - The Quarter
Construction Update Video Here:



Click the Play Button to View the Video



Walker Street - Final mains connection



Student wing - Mast climbers, external insulation and render progress



Substation



'Zig zag elevation' - External insulation, windows and weatherboard



Student wing - Render progress



Student wing - Glass balustrade commenced



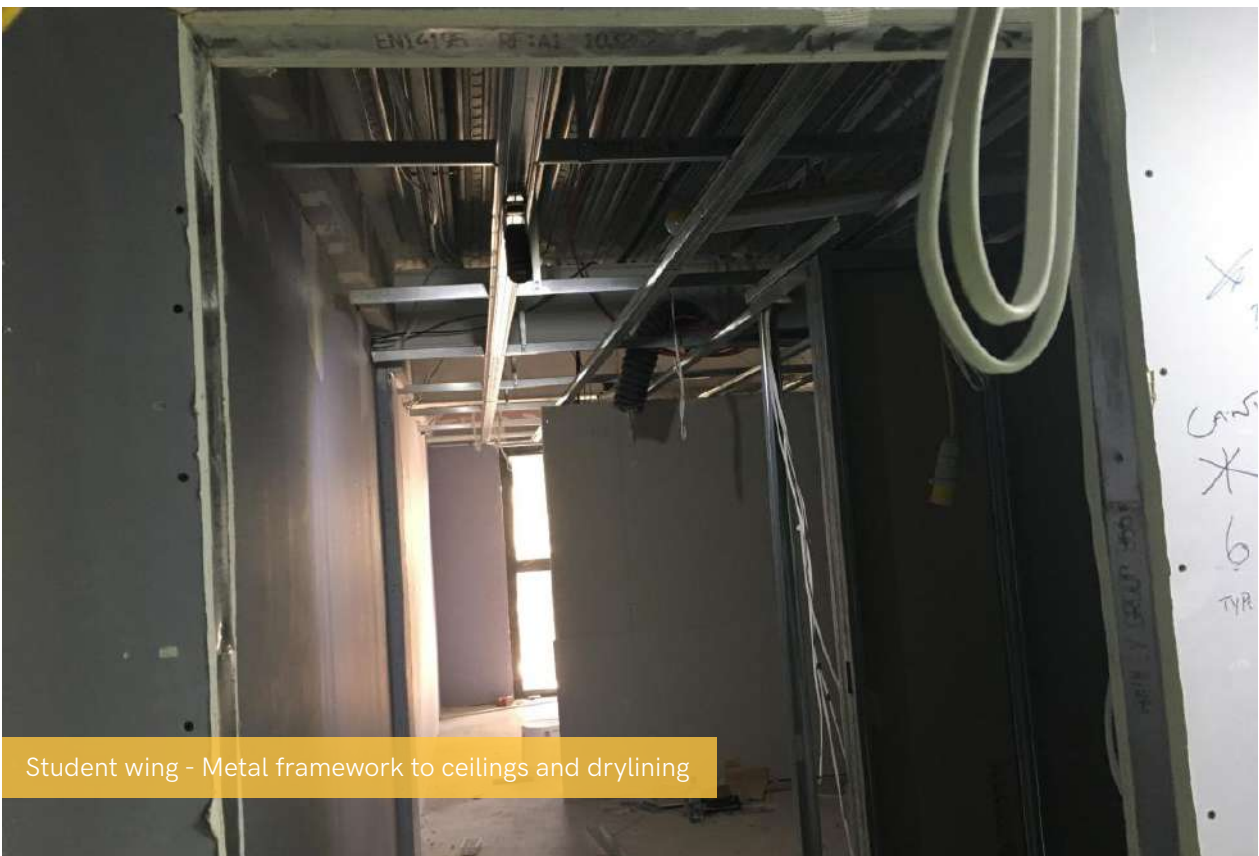
Residential wing - Flat roof vent



Residential wing - Flat roof coverings progress



Ground floor - Under ground drainage and ground floor beams



Student wing - Metal framework to ceilings and drylining



Student wing - Drylining



Student wing - Drylining and plasterwork



Student wing - Drylining and plasterwork



Student wing - Bathroom pod



General site activity



General site activity



Aerial site view







www.nexusresidential.co.uk