



ELEMENT - The Quarter  
Construction Update

May 2022

ELE  
TH

## May 2022

**This month at ELEMENT - The Quarter, the steel frame structure has been completed, as well as the upper suspended steel frame structure.**

Another task which has been completed is the flat roof structure. Finalisations are also being made to the scaffolding and mast climber access, as well as the fire coating steel framework.

## Summary of Works Progressed

- 60% progression of retaining walls, and concrete beam foundations
- Underground drainage is undergoing finishing touches
- Completion of steel frame structure
- Upper suspended steel frame structure is completed
- 96% completion to fire coating steel framework
- 80% development of structural framework forming external walls
- Scaffolding and mast climber access is 95% complete
- Completion of flat roof structure
- 75% completion of flat roof coverings including balconies
- Weatherboarding is 84% complete
- 85% completion to external windows/doors and curtain walling
- External wall insulation and render now 65% complete
- 48% completion to mansafe system



Brunswick Road - Site view



Walker Street - Site view



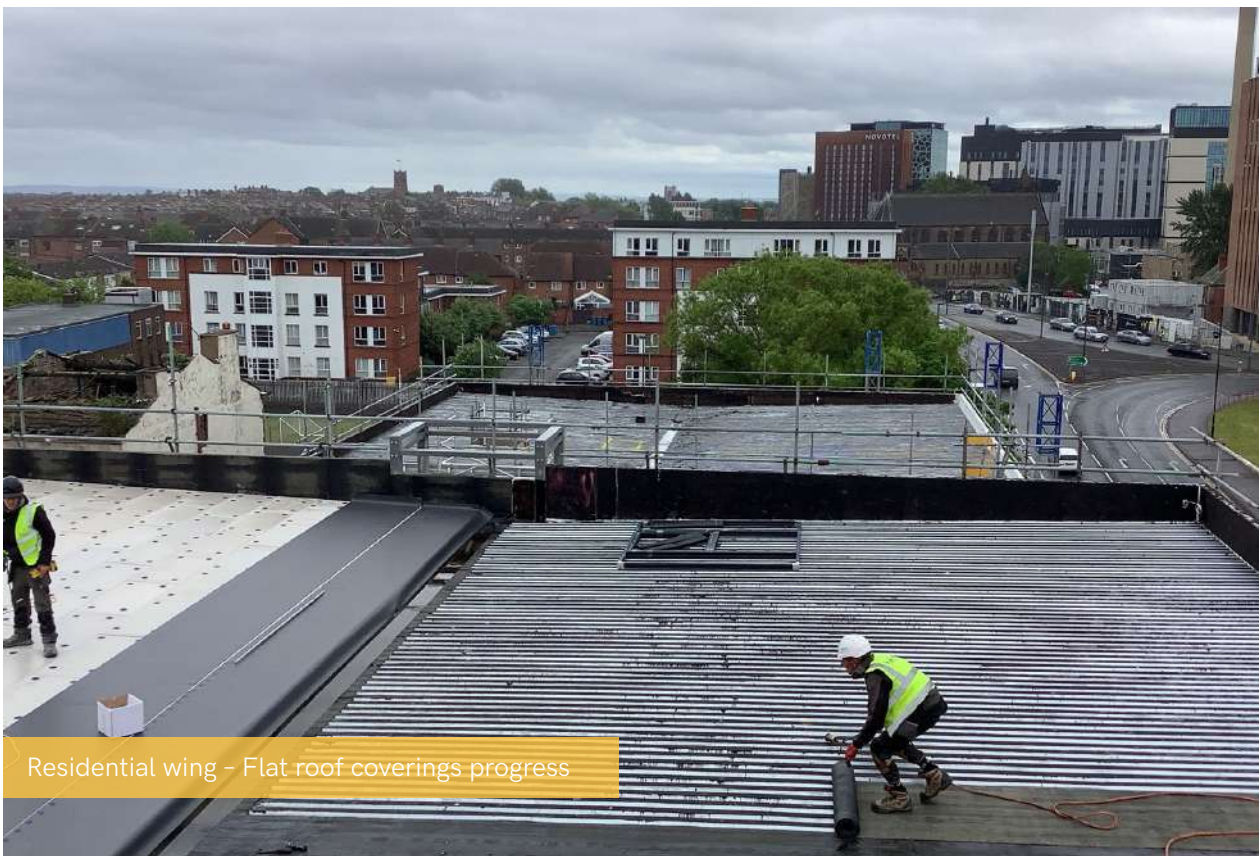
Inner courtyard view - General progress photo



Inner courtyard view - Render application & cladding progress



Substation



Residential wing - Flat roof coverings progress



Student wing - Lift core



Student wing - Kitchen units commenced



Student wing - Internal floor finishes commenced



Student wing - Boarding of partitions on-going



Student wing - Boarding of partitions on-going



Material storage - KERS energy recovery units





Material storage - Kitchen units