



RWinvest

RELIANCE HOUSE STUDIOS

CONSTRUCTION UPDATE

July 2019



RELIANCE HOUSE STUDIOS

CONSTRUCTION UPDATE

July 2019

Work has now commenced at Phase 3 of Liverpool's Reliance House Studios.

Drain works have been ongoing and once these are completed, the main construction package can commence.

However, inside the development, all ceilings have been receiving fire sealant works to maintain fireproofing throughout the apartments.

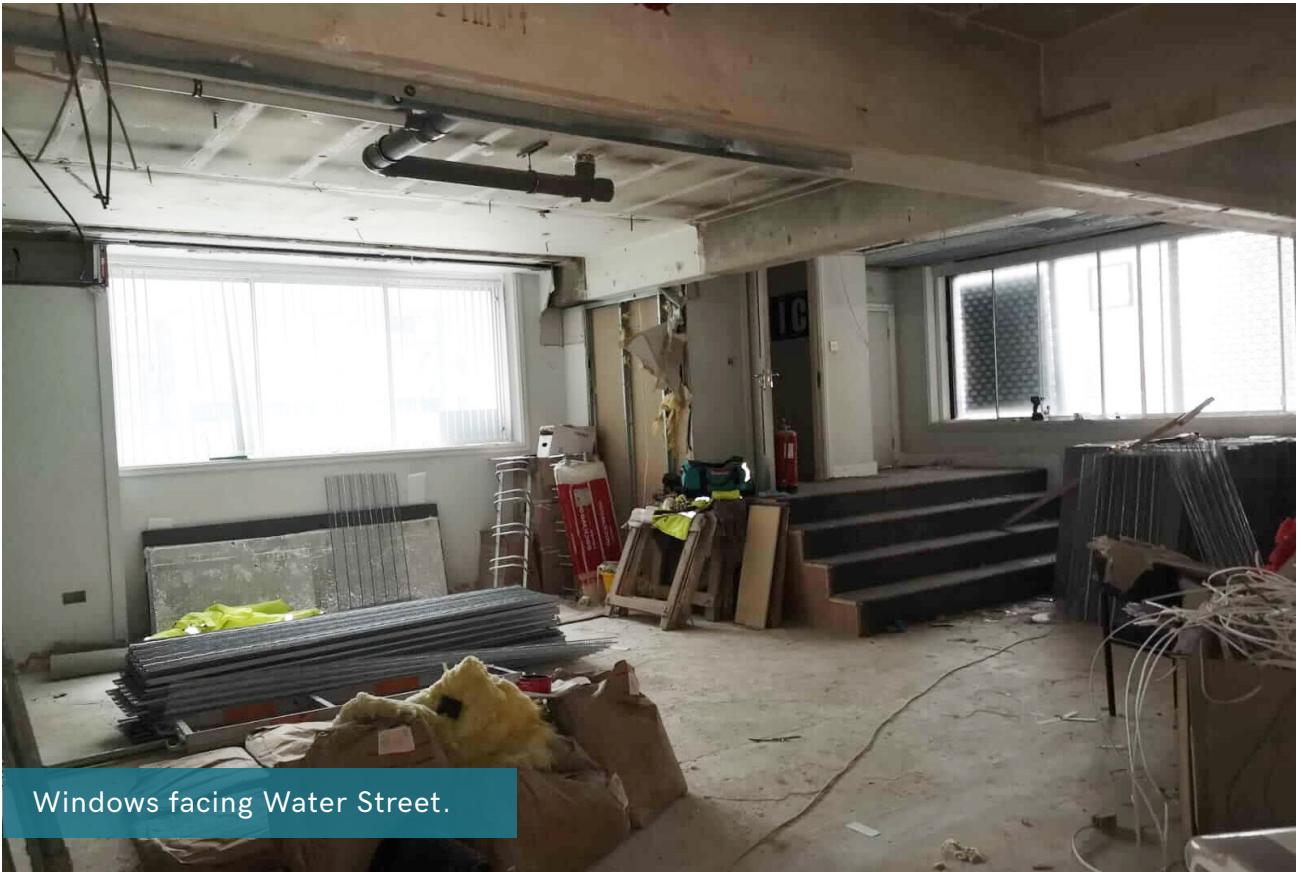
External work scheduled to commence in the next few days includes the dig out of a large area of slab.



Windows facing Tower Gardens.



Internal corridors.



Windows facing Water Street.



RWinvest

Liverpool +44 (0)151 808 1250

London +44 (0)207 100 4141