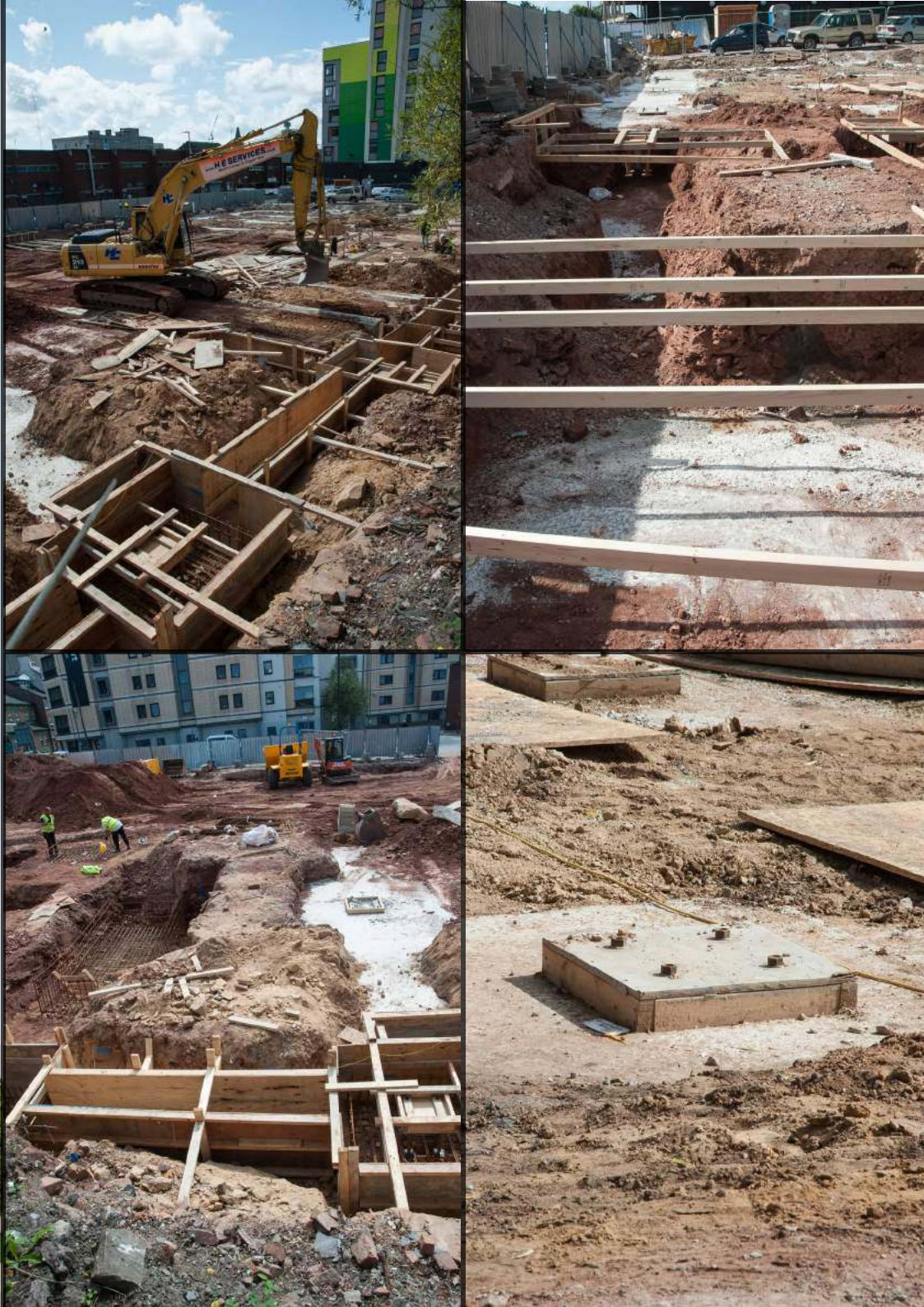




RWinvest

RW Invest  
14 Colquitt Street  
Liverpool  
L1 4DE  
[www.rw-invest.com](http://www.rw-invest.com)

# ONE ISLINGTON PLAZA CONSTRUCTION UPDATE AUGUST 2017





# One Islington Plaza Devon Street, Liverpool, L3 8HA

Concrete & steel foundations have commenced.

This has involved excavation of the site to bedrock level.

Steel frame due onsite 18th September 2017.

Design progressing well to ensure that the programme milestone dates are achieved.

If you need any further information in the meantime, please feel free to call us at the following offices:

London +44 (0)207 100 4141

Liverpool +44 (0)151 958 1254





