



One Baltic Square Construction Update

DECEMBER 2022

December 2022

Internal signage is now completed in Block D, with masonry support on Block B also completed during December. Hot water cylinder installation is complete to Block A and intumescent paint is approaching completion in Block E.

Progression has been made to a number of tasks, including Block D carpets, boarding and plastering in Block A, drainage across the entire site, and various 1st and 2nd fix works. In the next period, brickwork is anticipated to complete to Block D. Commencement of internal studwork will also take place on Block B.

Summary of Works Progressed

- Completion of internal signage in Block D
- Completion of masonry support on Block B, nearing completion on Block C
- Completion of hot water cylinder installations on Block A
- Completion of plant room and bin store masonry
- Completion of internal doors installation on Block D, nearing completion on Block A
- Near completion of internal lift core on Blocks B and C
- Near completion of wardrobe installation to Blocks A and D
- Near completion of brickwork on Block D, works progressing on Block A
- Near completion of window installation on Blocks B and C
- Near completion of wall and ceiling finishes on Blocks A and D
- Near completion of kitchens and appliances on Blocks A and D
- Near completion of 2nd fix mechanical and electrical and joinery on Blocks A and D
- Near completion of intumescent paint on Block E
- Near completion of boarding and plastering on Block A
- Near completion of carpets on Block D
- Near completion of ground floor curtain walling on Block D
- Near completion of drainage
- Progression of roof coverings to Block B
- Progression of insulation to perimeter walls on Block B
- Progression of stair handrails to Blocks A and D
- Progression of 1st fix mechanical and electrical on Blocks B, C and E
- Progression of external and S278 works
- Commencement of basement masonry on Block E
- Lift installation works continue

Works Anticipated

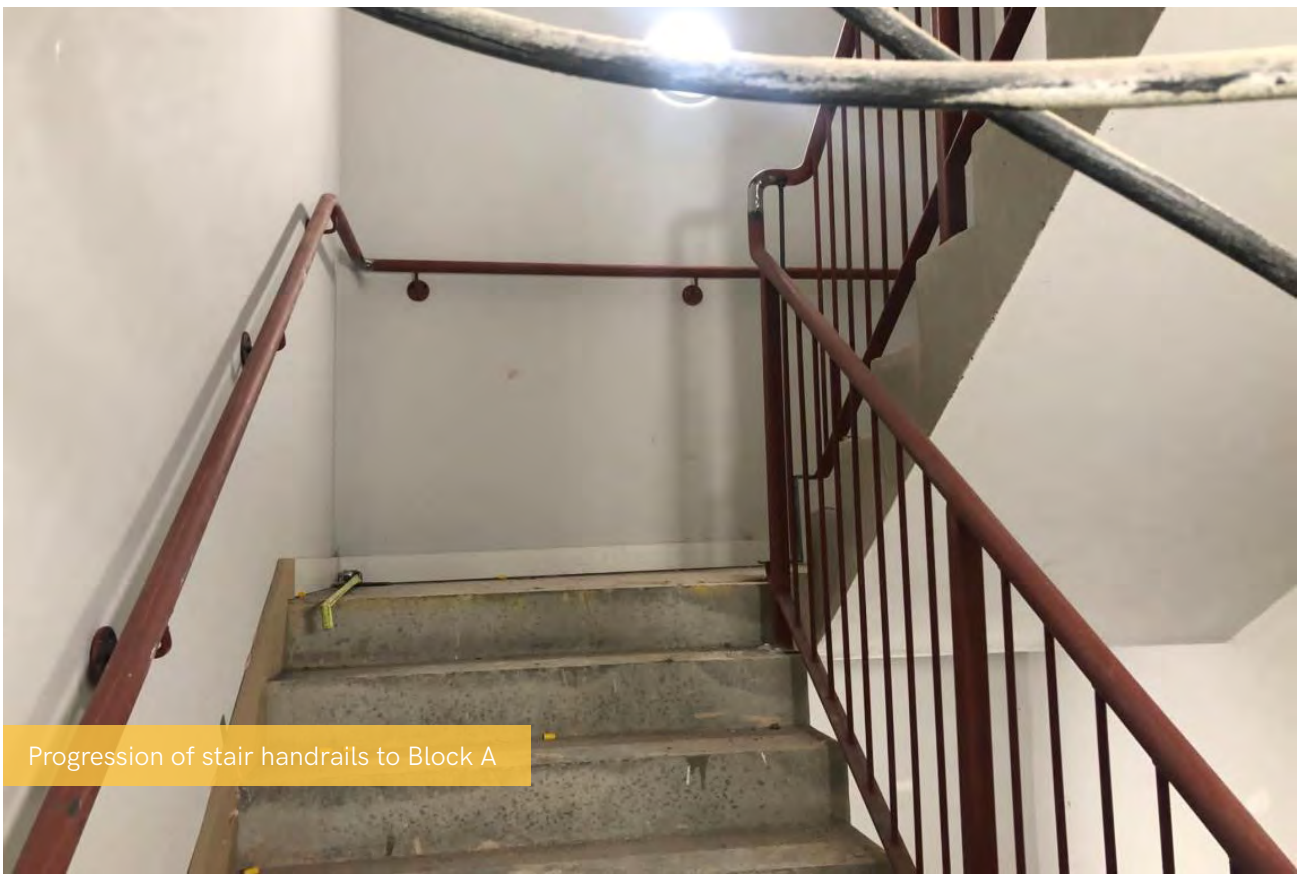
- Completion of mechanical, electrical and joinery on Block D, nearing completion on Block A
- Completion of hot water cylinder installations on Block A
- Completion of boarding and plastering on Blocks A and D
- Completion of brickwork on Block D
- Completion of intumescent paint on Block E
- Completion of ground floor curtain walling on Block D
- Completion of windows on Block B and C
- Completion of kitchens and appliances on Block D, nearing completion on Block A
- Completion of internal doors installation on Blocks A and D
- Completion of drainage - Completion of wall and carpet finishes on Block D, nearing completion on Block A
- Near completion of 2nd fixes on Block A
- Near completion of wardrobe installation to Blocks D and A
- Progression of lift installations
- Progression of lift core on Blocks B and C
- Progression of 1st fixes on Blocks B, C and E
- Progression of brickwork on Block A
- Commencement of steel framing system on Block E

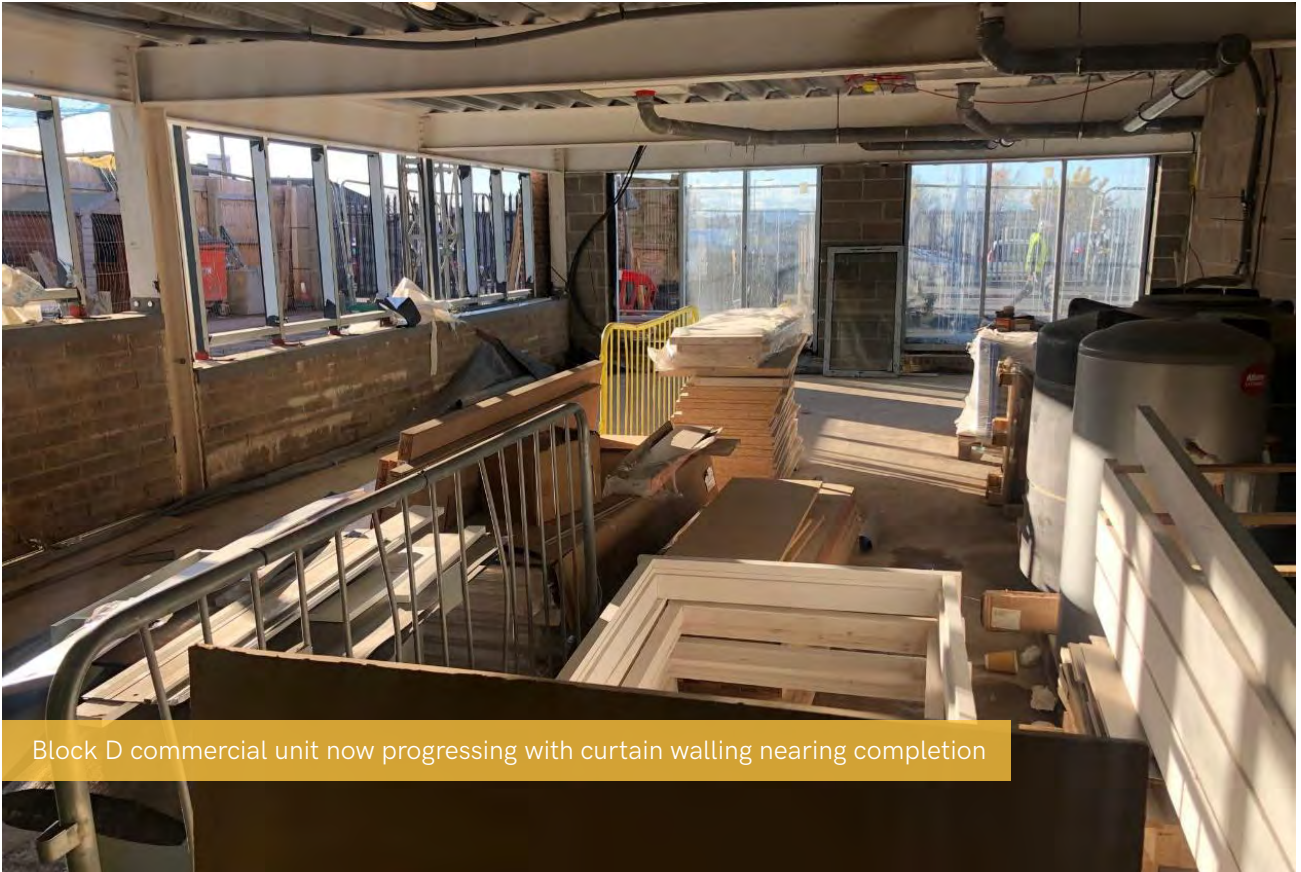


Near completion of windows and masonry supports to Block C



Final kitchen installations ongoing in Block A





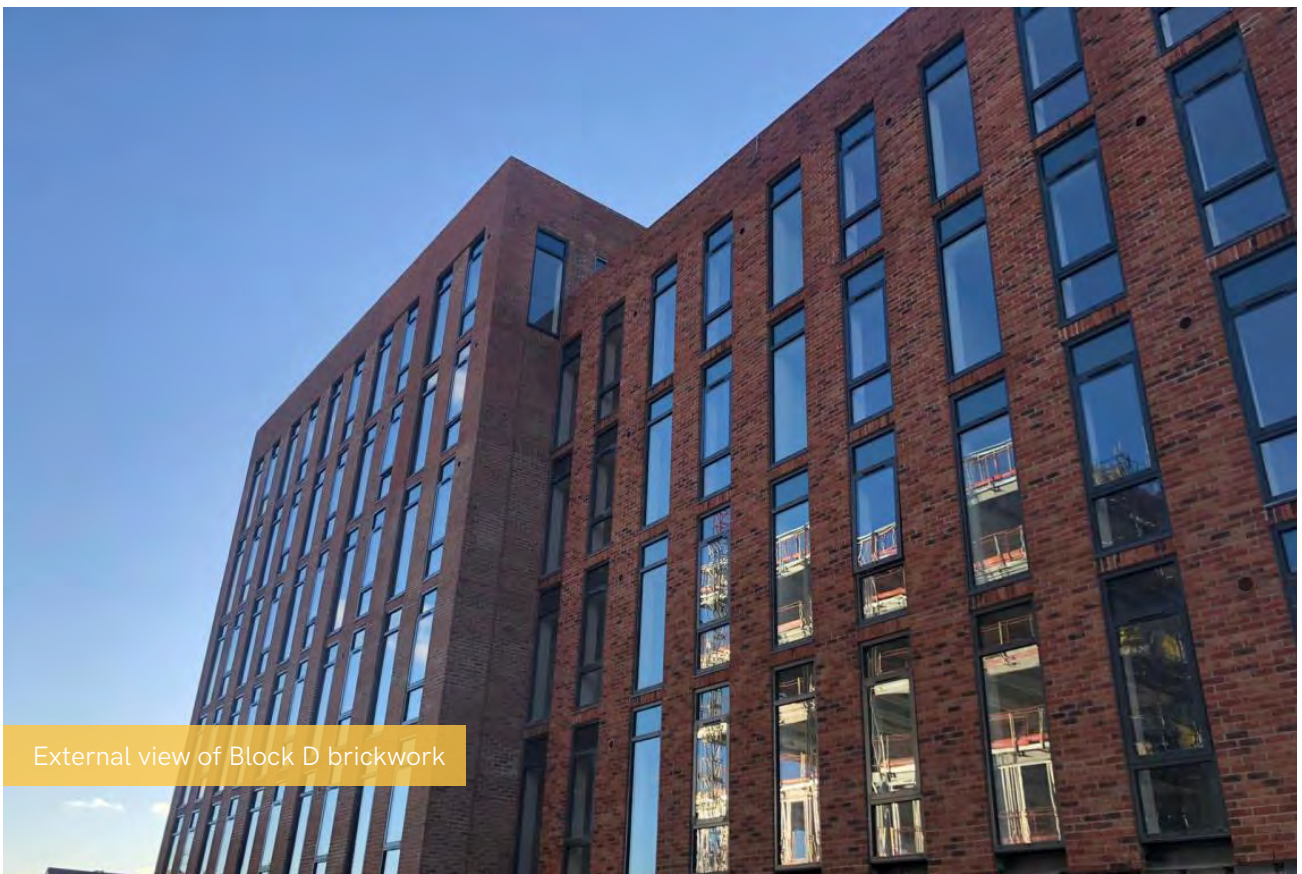
Block D commercial unit now progressing with curtain walling nearing completion



Progression of insulation to perimeter walls on Block B



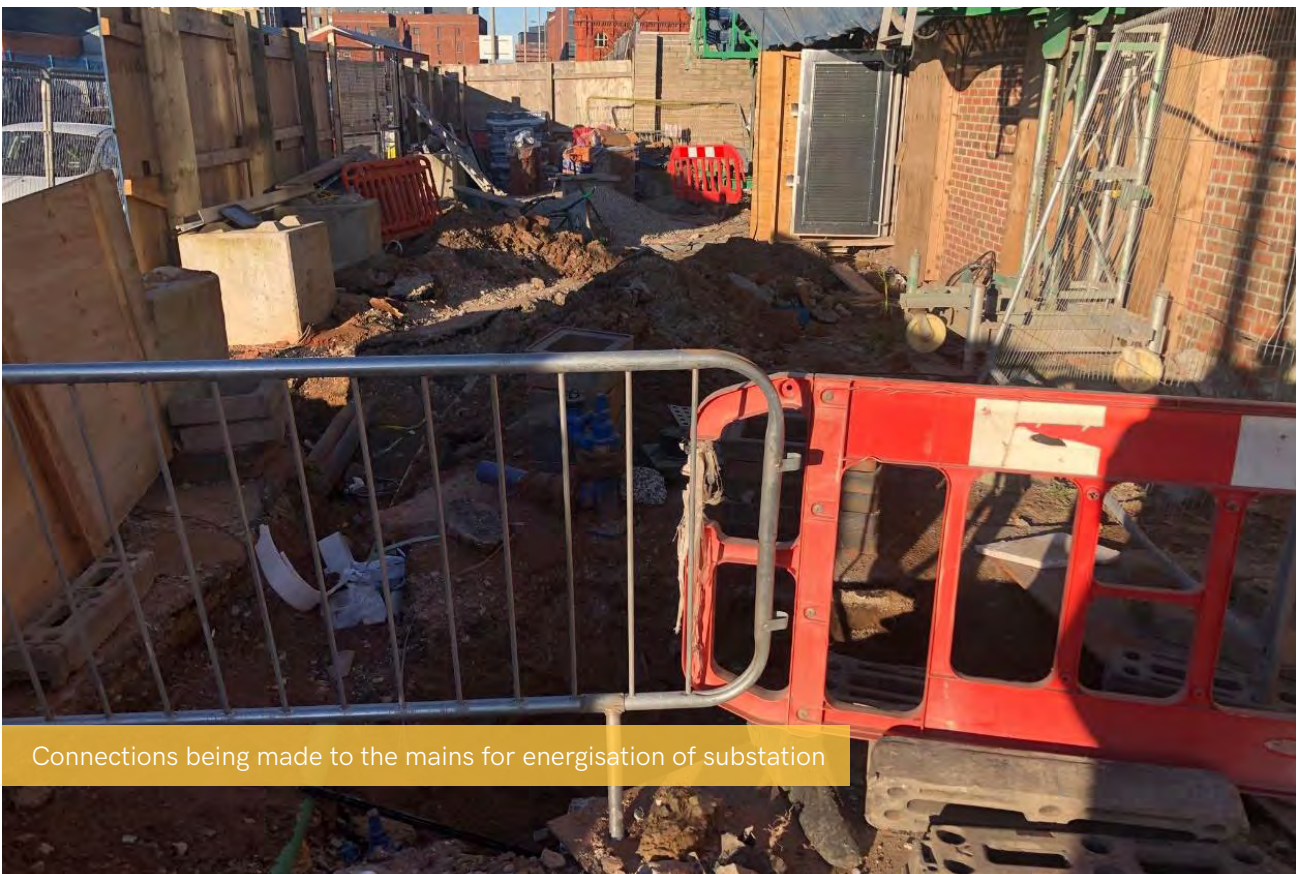
Completed kitchen with appliances in Block D



External view of Block D brickwork



Completion of blockwork for bin store and plant room



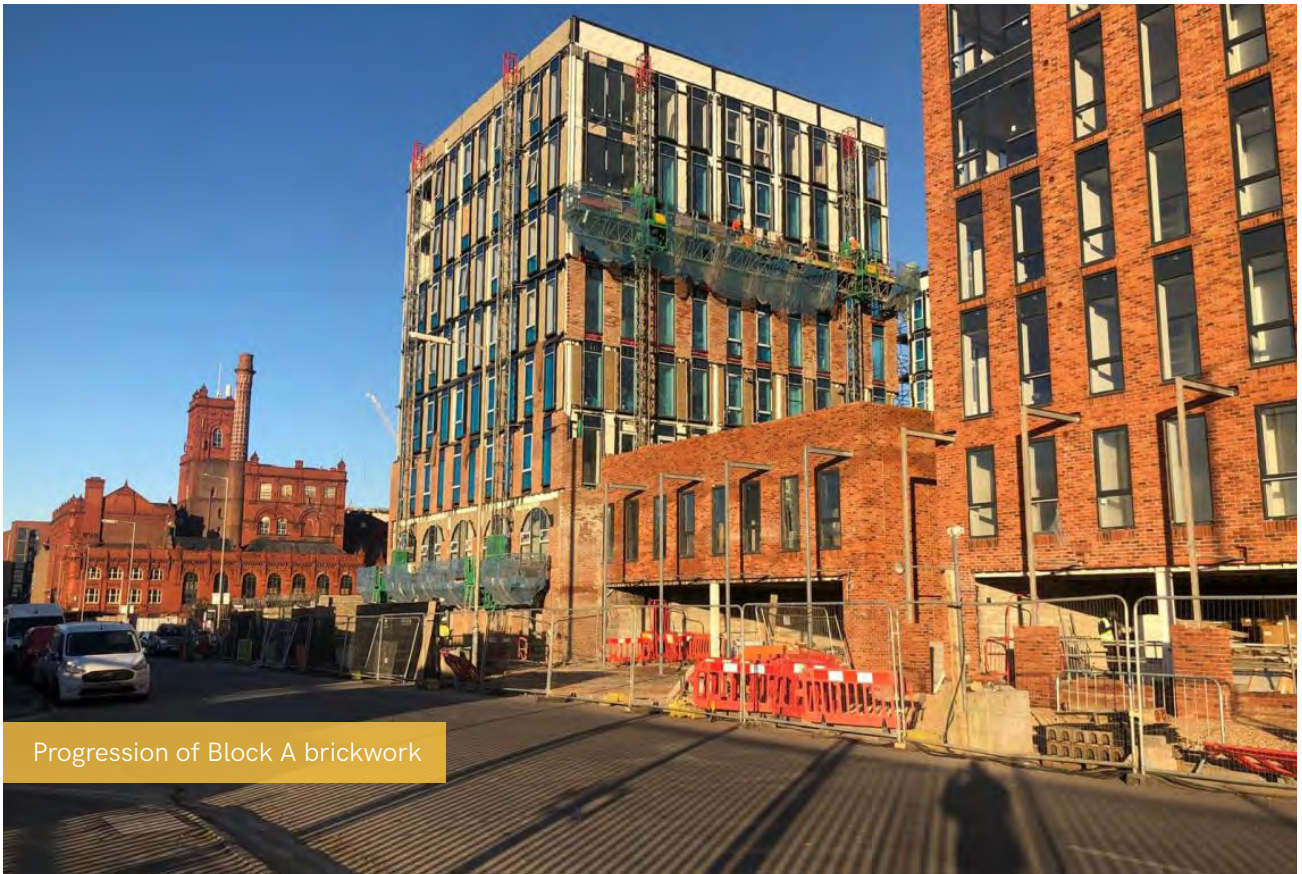
Connections being made to the mains for energisation of substation



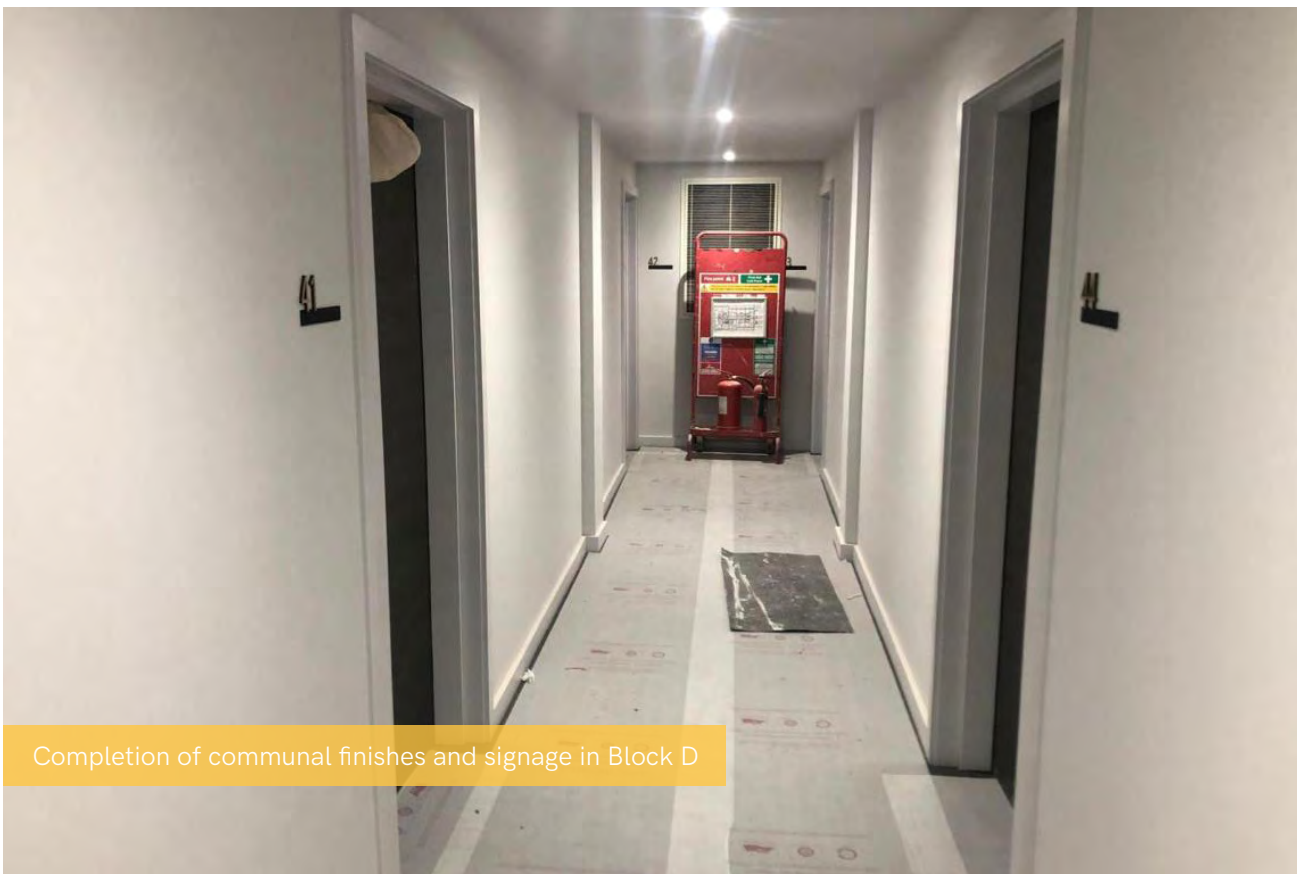
Electric panel and carpet installation to Block D



External view of Block D brickwork and colonnades



Progression of Block A brickwork



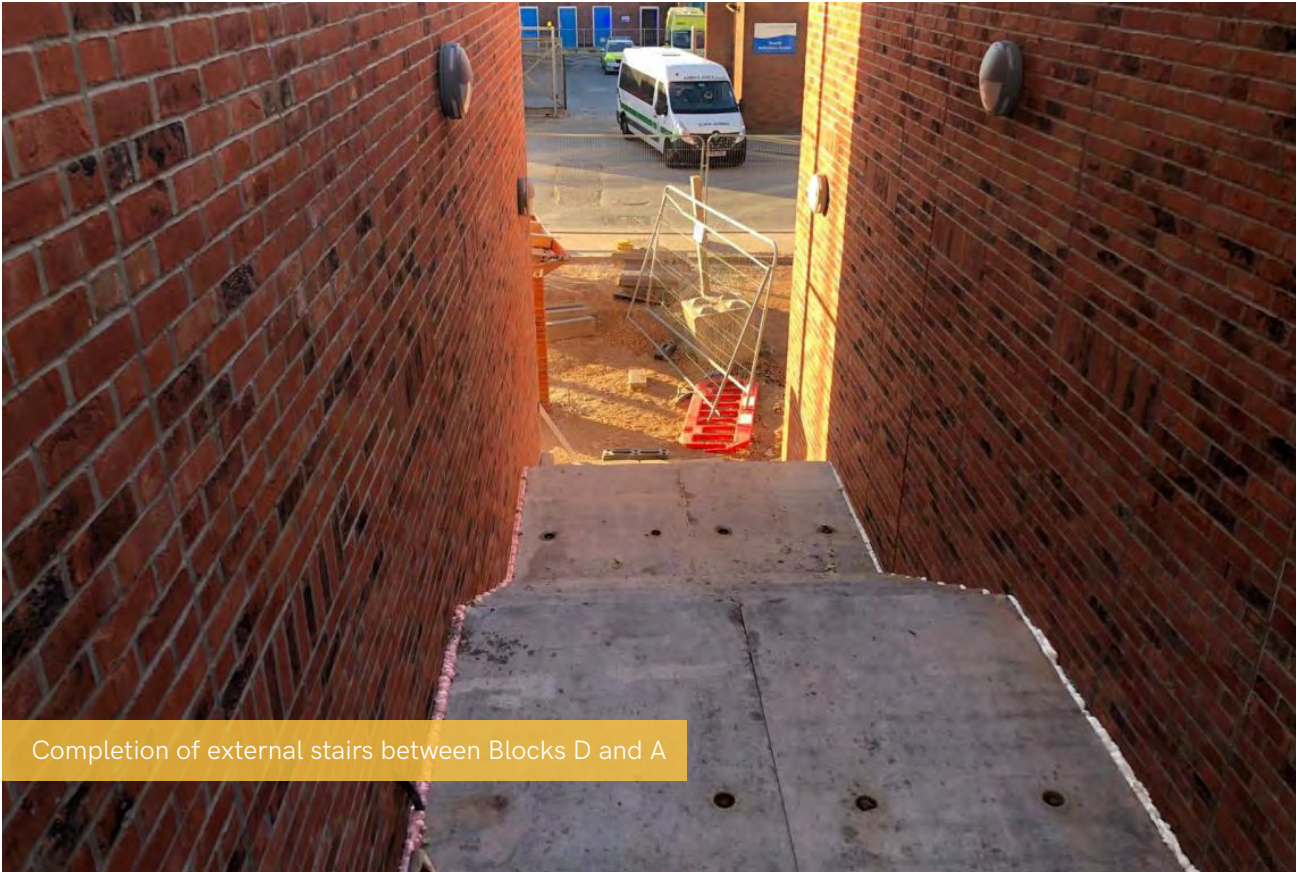
Completion of communal finishes and signage in Block D



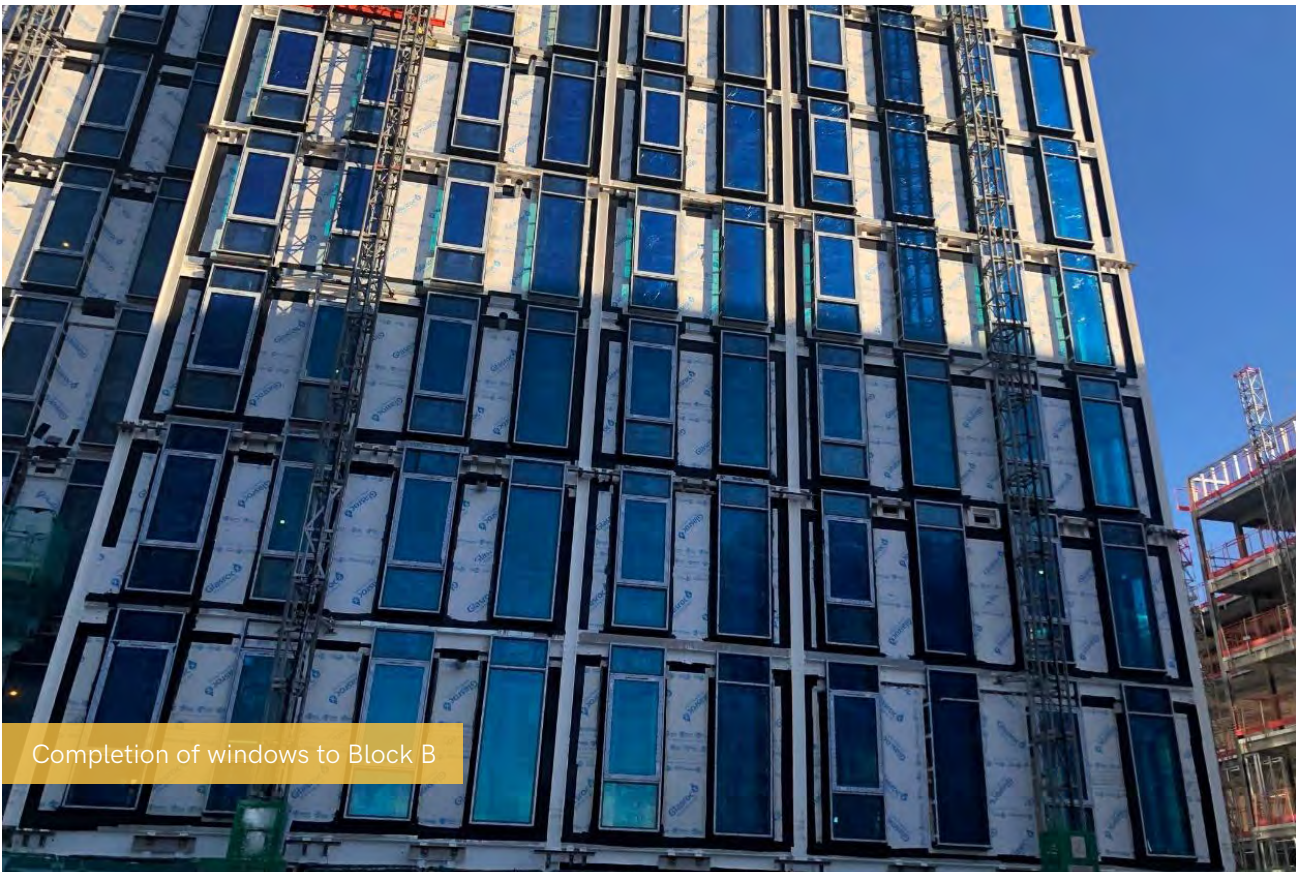
Progression of 1st fixes to Block C



Progression of SFS installation on Block E



Completion of external stairs between Blocks D and A



Completion of windows to Block B



Progression of external works to Block D