

Design Buy Build

M A G A Z I N E

Issue 57 2022 £3.95

www.designbuybuild.co.uk

Self Builders



Property Developers



Architects



Interior Designers



David James Architects

Amplifying harmony between dwellings and their setting



Harvey Maria Parquet 2.0

The perfect blend of classic design and modern practicality



Bespoke fitted furniture

Bringing personality and personalisation to any interior



PALETTONE

Discover a new world of colour

For colour, for choice, think Palettone.
Commercial homogeneous flooring in
a spectrum of 50 shades.

Order free samples from
www.polyflor.com/palettone



English Garden & Woodland Air

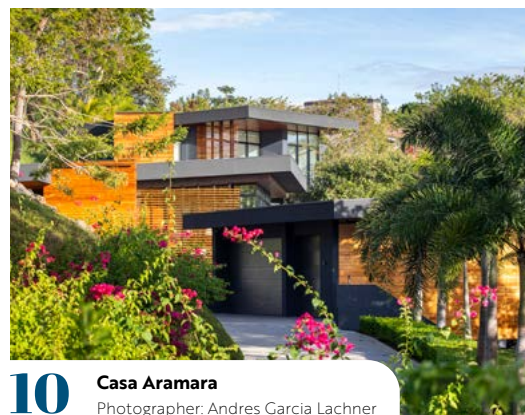
ISSUE HIGHLIGHTS

- 4-5 David James Architects**
Oseleta and Optima are part of an exclusive gated development located in the 'Luscombe Valley' in Poole, Dorset, designed by David James Architects for Excellare in association with China Corp.
- 10-11 Casa Aramara**
In addition to the recipient of the Luxury Lifestyle Awards "Best Luxury Architecture Single Residential Costa Rica 2021" award, the residence was also an International Property Awards double award winner.
- 14-15 When does cost outweigh conservation?**
Paul Trace of Stella Rooflight discusses the importance of maintaining the historical integrity of buildings during an economic downturn.
- 20-22 Orchard House**
This expansive new build follows a highly glazed design, utilising a number of bespoke engineered glazing solutions to create an indoor-outdoor style of living.
- 40-42 2022 Bedroom Trends**
BA reveal the latest furniture trends, which are set to influence the UK bedroom and wardrobe market in 2022-23.
- 44-46 Decorative Surfaces**
Transformad's ultra-stylish new surfacing ranges, Tmatt and Crystal, join James Latham Ltd's expansive collection of decors and finishes.
- 68-69 Turning spaces into an oasis of serenity**
If you're looking for a landscape architect and gardening design company, dedicated to providing first-class services to their clients, then look no further than Green Gardenia Landscaping LLC, in Dubai.

PRODUCTS & SERVICES

- 4-5, 20-22, 80-81** Architects Projects
- 6-15** Editor's Choice
- 16-17** Bathrooms
- 18** Coatings, Sealants & Paints
- 19** Decking & Cladding
- 23-25** Doors, Windows & Fittings
- 26-27** Flooring
- 28-30** Heating, Ventilation & Insulation
- 31** Home Automation
- 32-49** Interiors & Interior Design
- 50-57** Kitchens
- 58-69** Landscaping & External Works
- 70-75** Lighting
- 76-79** Safety, Security & Fire Protection
- 82-83** Tools, Plant & Equipment

COVER PHOTO



10

Casa Aramara

Photographer: Andres Garcia Lachner

Design Buy Build - www.designbuybuild.co.uk

Editor in Chief
Antony Holter
antony@designbuybuild.co.uk
01304 806 039

Editor
Fiona Medows
fiona@designbuybuild.co.uk
01304 806 039

Sales Director
Chris Nicholls
chris@mhmagazine.co.uk
0203 907 9161

Studio Designer
Sarah Johnson
sarah.johnson@mhmagazine.co.uk

Business Manager
Josh Holmes
josh@mhmagazine.co.uk

Publishing Director
Martin Holmes
martin@mhmagazine.co.uk
01304 806 039

Editorial Assistant
Tom Moore
tom@designbuybuild.co.uk

Digital Manager
Jamie Bullock
jamie@mhmagazine.co.uk
01227 936971



Published by:
MH Media Global Ltd
Office 15, Second Floor,
Innovation House, Discovery Park,
Ramsgate Road, Sandwich,
Kent, CT13 9FD

Tel: 01304 806 039

© MH Media Global



DAVID JAMES ARCHITECTS

Oseleta and Optima are part of an exclusive gated development located in the 'Luscombe Valley' in Poole, Dorset, designed by David James Architects for Excellare in association with China Corp.

The designs evolved from the concept of 'organic architecture', amplifying harmony between the dwellings and their setting. The house designs complement the sylvan setting allowing the occupants to feel at one with their environment.



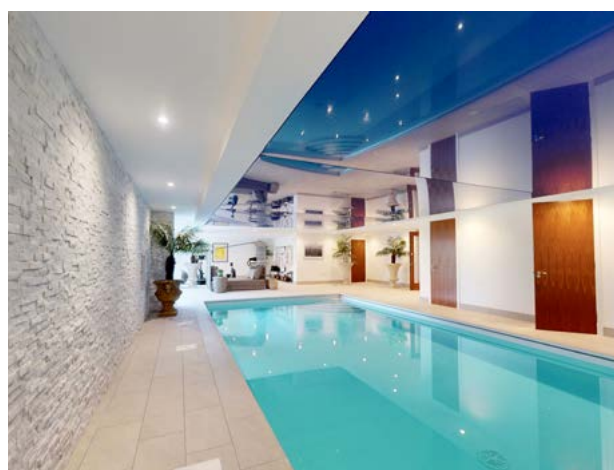
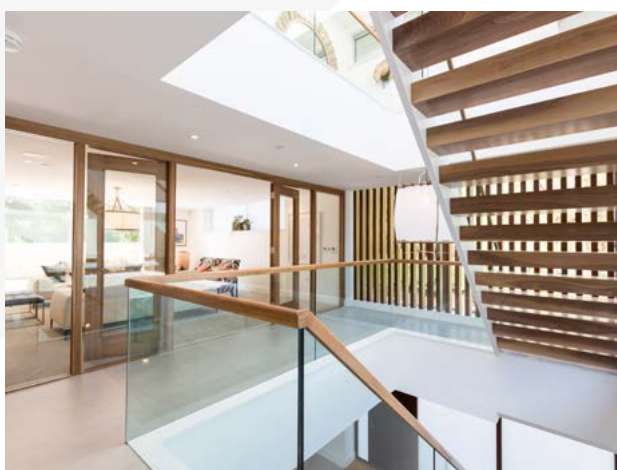
The site at Luscombe, occupies a spectacular natural wooded setting presiding over Poole Harbour, with views to Brownsea Island and the Isle of Purbeck beyond. Luscombe is a private enclave surrounded by pine trees adjoining the Luscombe Valley Nature Reserve and the renowned Parkstone Golf Course. The development is also within easy walking distance to Poole Harbour and is located within easy reach of the stunning Sandbanks Peninsular.

The houses offer substantial living space over three floors, including a pool, fitness suite and covered outdoor entertaining area. Both feature impressive naturally illuminated, triple volume feature stairwells, bathed in natural light from three rectangular skylights. From these beautifully crafted staircases with open walnut treads, one can access the entire accommodation, from the fitness suites on the ground floor, the entertaining / living areas to the first, and the four double bedrooms with ensuite bathrooms to the second.

The dwellings are solidified into the ground with natural stone, from which light horizontal aluminium elements link vertical timber fins, which complement the sylvan surroundings. The houses have been designed to express a



"Luscombe is a private enclave surrounded by pine trees adjoining the Luscombe Valley Nature Reserve and the renowned Parkstone Golf Course."



feeling of light with suspended elements in space, with floor to ceiling glass seamlessly integrating inside and out, whilst framing views. DJA undertook the planning, detailed design and interior architecture for this head-turning development - just one of many award-winning projects by this Dorset based Architectural Chartered Practice.

Established in 2009, David James Architects has been at the forefront of Architectural design in the region, having won a large number of awards for their designs over the past 13 years. They offer a full architectural package, from the initial concept through to building completion. Their services include concept design and planning, interior design, detailed and technical design, tender process, and project management.

www.davidjamesarchitects.co.uk

Images: Stuart Cox Photography

MARANO® – HANDRAILING MADE EASY

Paul Smith, Head of Marketing at F.H. Brundle, explains the many benefits of Marano aluminium handrailing.

Glass panel railings are a lucrative growth area for thousands of tradespeople around the country – or at least they should be.

The love of sleek, elegant barriers that let in natural light and make the most of scenic views is at an all-time high – and that means homeowners are more than willing to invest in the quality products that offer those sought-after attributes.

However, installers can often find their once sizeable margins start to disappear when they add in the time and cost of transporting and installing systems that can be complex, confusing and extremely heavy.

It doesn't have to be that way. Some manufacturers have worked incredibly hard to design innovative modern products that can boast all the benefits consumers look for from systems of this kind, without any of the drawbacks.

At F.H. Brundle, we're delighted to supply one of the leading examples – Marano.



A versatile range

The innovative Marano railing system is designed to be fully modular. With its pre-assembled aluminium posts, it can be quickly installed with basic equipment, making it an extremely economical solution for post and glass panel designs.

Marano Curve features rounded posts, while Marano Edge has squared posts. Equally suited to indoor or outdoor installation, both styles are designed for 10mm glass, and tested to 0.74kN at 1.2m post centres. They're available in an aluminium or satin anodised finish. Posts are also available in 6m lengths if you would like to make your own.

In addition, posts come supplied with post caps, screws for attaching handrails, plastic packers, rubbers for fitting glass, blanking strips, base cover plates and more.



We also offer Marano Horizon Railings. Cost effective, rust resistant, and made of lightweight aluminium, Horizon railings are easier to cut and fix than stainless tubes, and are available in a satin anodised finish.

In addition, we supply Marano Simplicity, a railing system without glass panes. Made of powder-coated aluminium for robustness and longevity, which, like all Marano offerings, requires extremely little maintenance.

Unlike wood, all products in the Marano range won't rust, splinter, warp, or require any painting or treatment with pesticide. They're also lighter and cheaper to transport.

Find out more

If you'd like to learn more about how we can help you, please don't hesitate to give us a call on 01708 398048, or visit www.fhbrundle.co.uk.



F.H. BRUNDLE
SERVING THE TRADE SINCE 1889



For more information
01708 39 80 22
sales@brundle.com
www.fhbrundle.co.uk

Synergised™ PORCELAIN TILES

- UV resistant
- Non-combustible
- Ideal for any hard surface
- Stunningly realistic natural wood effect
- Low maintenance & easy to install
- 100% recyclable
- Anti-slip



Balconies & Terraces



Patios



Ca'Foscari



Yosemite



**NO TRADE ACCOUNT
REQUIRED**

**COMPETITIVE
PRICES**

**REQUEST A FREE
SAMPLE**

**ORDER ONLINE
24/7**

**FREE DELIVERY ON
ORDERS OVER £150**

GLAS-DOR

Glazed fire-resistant steel profile system



FIRE RESISTANT

Up to 120 mins
EN 1634-1 up to EI 120



ACOUSTIC REDUCTION

Up to 45dB



BALLISTIC RESISTANT

BS EN 1522
FB3NS to FB7NS



INTRUDER RESISTANT

BS EN 1627 RC2 to RC5
& PAS 24

- > Available tested to PAS 24 and approved by Secured by Design.
- > Ideal for use in shopping centres, airports, hospitals, schools and similar public buildings.
- > Available made-to-measure
- > Available as Glazed Wall Section, Glazed Doorset and Glazed Double Leaf Sliding Doors.

Robust by name. Robust by nature.

For more information please call, email or visit our website:

☎ 01782 592900

✉ sales@robust-uk.com

🌐 www.robust-uk.com

ROBUST

Steel Door Solutions



Timeless elegance with Garador's Georgian doors

Add timeless elegance to your property with Garador's Georgian style garage doors.

These stand out garage doors have been beautifully designed with deep, crisp panel pressings to add exceptional quality and style to the overall look. The more formal, traditional design will instantly enhance both modern and traditional properties.

Each of Garador's Georgian styles have been precision engineered with rivet free panelling to ensure the smooth, clean outlines of this special door. Available in a range of smart durable colour finishes, these doors stand head and shoulders above other panelled garage doors currently on the market. They are available in an array of standard and made-to-measure sizes for both single and double doors.

Find out more about Garador's Georgian garage door designs at www.garador.co.uk or ask your local Garador distributor.



Residents bowled over by refurbished leisure facility

Helping to fill a gap in the provision of leisure facilities for young people in Darlington, the Zumtobel Group lighting brands Zumtobel, and Thorn worked with Davies Tindale Associates to supply advanced lighting control and luminaires for the £1.7m Darlington Dolphin Centre refurbishment project. A focal piece of the scheme was the circular windows into the bowling alley, which show a snapshot of the bowling alley. The client had a clear vision they wanted to achieve. The accent lighting and bowling alley can be changed as required for parties and different functions. The bowling alley scheme also consisted of Zumtobel's MICROS, PANOS infinity downlights and ONDARIA. The soft play and playrooms feature Thorn's Glacier pendent, Omega Pro 2 recessed, and Chalice downlights. The scheme delivered a superb lit effect with colour change control, good colour rendition, and low energy consumption.

For more information on Zumtobel Lighting please visit the website <https://z.lighting/en/zumtobel/>, for or Thorn Lighting www.thornlighting.co.uk.



WilSon Energy Ltd

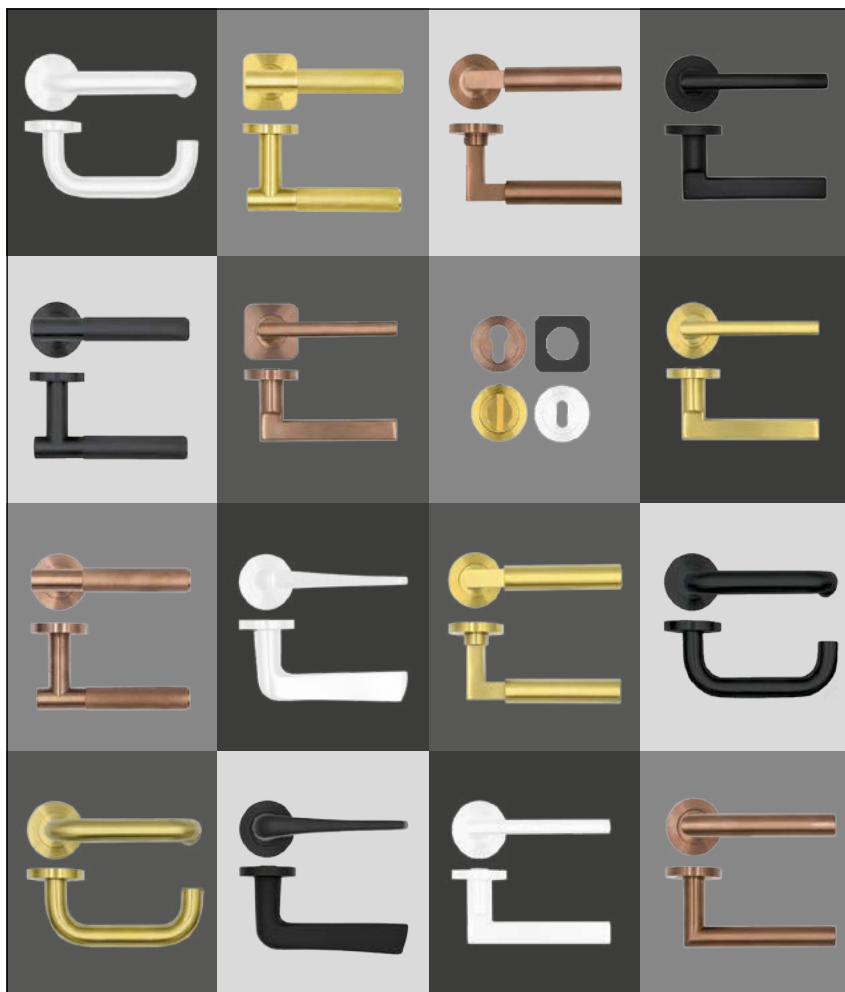
WilSon Energy Ltd are one of the UK's leading providers of fully integrated Heating and cooling systems for district & heat network applications. Our high quality, space saving, low maintenance range of Heat Interface Units deliver efficient fast delivery of hot water and heating, with a low heat loss and low network return temperature. All systems can be supplied with our integral under-floor heating solutions.

With a flexible product range to suit all applications, new models are specifically designed for low temperature networks including ground and air-source heating.

All units come pre-wired and pre-installed with an integral heat meter, and optionally with open access, combined credit/pre-pay system.

Our end to end solution includes billing/ Pre-Pay bureau services, maintenance & support for both our own and third party systems, for residential homes and commercial developments.

wilsonenergy.co.uk



ROSSO TECNICA

ACCIAIO CON STILE



ROSSO TECNICA is our new and exclusive range of European inspired designer levers. Manufactured from Grade 304 stainless steel and finished in a new selection of stunning hard-wearing finishes, these levers are the perfect accompaniment to the latest trends in interior fashion.



AS PART OF OUR ONGOING COMMITMENT TO REDUCE OUR IMPACT ON THE ENVIRONMENT, THE ROSSO TECNICA RANGE IS SUPPLIED WITHOUT ANY PLASTIC PACKAGING. NO POLY-BAGS ARE USED IN THIS RANGE.

T : +44 (0) 1228 672 900
E : sales@zoo-hardware.co.uk
W : www.zoohardware.co.uk

Rosso Tecnica is part of Zoo Hardware **ZOO**

TracPipeCC[®]
Flexible Gas Piping by Omega Flex[®] Complete Containment

MADE IN
BRITAIN



GAS

TracPipeCC[®] BY OMEGAFLEX[®]

**We've got something
NEW up our sleeve...**

**TracPipe[®] with an integrated
containment sleeve!**

Save time and money by not having to apply a secondary sleeve!
With TracPipeCC[®] we've got it covered!

TracPipeCC[®] BY OMEGAFLEX[®] GAS

TracPipeCC[®]



FREE TRAINING



FREE ON-SITE VISITS



FREE SUPPORT



FREE ON-LINE GUIDES

TracPipeCC[®]
Flexible Gas Piping by Omega Flex[®] Complete Containment

TracPipe[®]
Flexible Gas Piping by Omega Flex[®]

Find out more...

Call +44 (0)1295 67 66 70

Email eurosales@omegaflex.com



www.tracpipe.co.uk

© 2018 Omega Flex, Inc. All rights reserved. FGP-771UK 10/18



CASA ARAMARA

Casa Aramara is a multiple award-winning residence in the Peninsula Papagayo Resort, Costa Rica.

In addition to the recipient of the Luxury Lifestyle Awards "Best Luxury Architecture Single Residential Costa Rica 2021" award, the residence was also an International Property Awards double award winner. The home received the "5-Star Best Architecture Single Residence Costa Rica 2019-2020" and the region's best "Best Architecture Single Residence Americas 2019-2020" awards.

Casa Aramara is located on the northern bay inside the Peninsula Papagayo Luxury Resort in Guanacaste, Costa Rica. The home sits on an extremely challenging site with very aggressive slopes and long and undulating site. This called for the design of 3 separate articulating modules, each placed at different elevations and different angles to best accommodate the site's challenging nature.

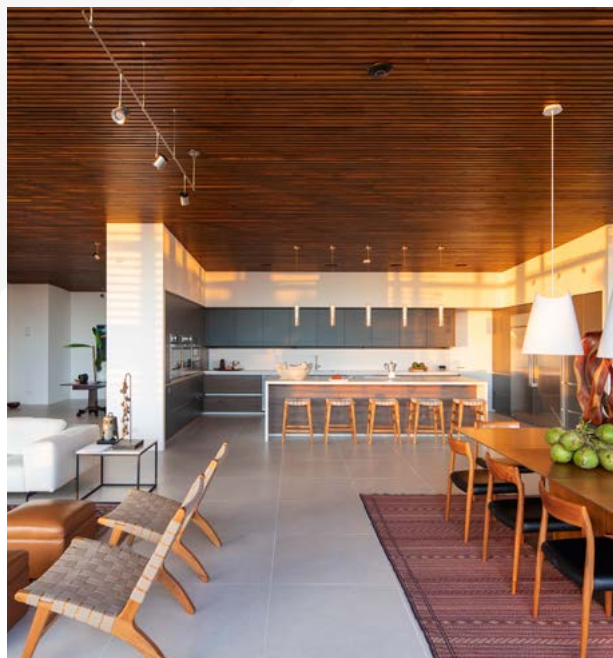


The home is an example of modern tropical design, where the seamless indoor-outdoor connection and the integration of the natural jungle and the ocean view is the main focus. Importance on natural materials with the usage of natural teak siding and sun control screens, contrast with the charcoal-grey stucco surfaces and soft earth-tone floors to provide a palette which integrates into the intense greenery of the natural landscapes.

SARCO Architects is a unique architectural firm as it embodies all needed specialties under one point of contact. The firm incorporates Architectural Lighting Design, Architectural Interiors, all required engineering, etc., as part of their core services. Additionally, for their high-end projects, they also take care of complete construction management, delivering the entire project scope for their clients.



"SARCO Architects is a unique architectural firm as it embodies all needed specialties under one point of contact."

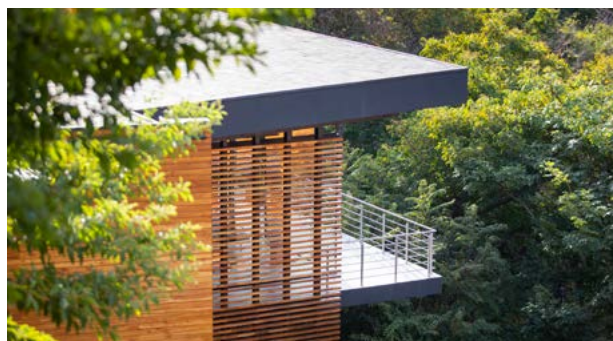


SARCO Architects prides itself on designing homes that people can enjoy and create lasting memories in.

For the absolute best in high-end bespoke luxury architecture for your home in Tropical paradise in Costa Rica, contact SARCO Architects Costa Rica.

► Tel. (Costa Rica) +506.2283.4107
(USA) +1.646.712.9299

newprojects@sarco-cr.com | www.sarcoarchitects.com





realise your opportunities



New build



Contemporary / Traditional



Remodelling

We are an award winning RIBA Chartered Architectural Practice with an enthusiasm for great design which manifests throughout all of our innovative build solutions.

Whether your project is a dream new-build, renovation, or remodelling of an existing house, each commission is bespoke and tailored to suit your requirements. We can assist in taking your build from concept right through to completion. We will help you to realise your opportunities.

"We were so lucky to find msa, whose artistic and forward thinking ideas were way beyond anything we could have come up with by ourselves. We now have our dream home."

Mr & Mrs Goodwin

01925 299 881

www.msaarchitects.co.uk

opportunities@msaarchitects.co.uk

msaarchitects

arb
Architects Registration Board

RIBA 
Chartered Practice



- Quality factory reject Celotex insulation boards
- Thickness from 12mm to 250mm
- Standard size 1.2m x 2.4m
- Other sizes are also available
- Discount available for large orders
- Nationwide delivery subject to agreeing on delivery cost



Collection from

Unit W, Stafford Park, Liston
Sudbury, Suffolk, CO10 7HX

Culford Sawmill, Brandon Road
Culford, Suffolk, IP28 6UE

Office: 01787 370 295 | Mobile: 07963 695 226 | sales@economicinsulation.com

www.economicinsulation.com

Arridge Garage Doors Since 1989



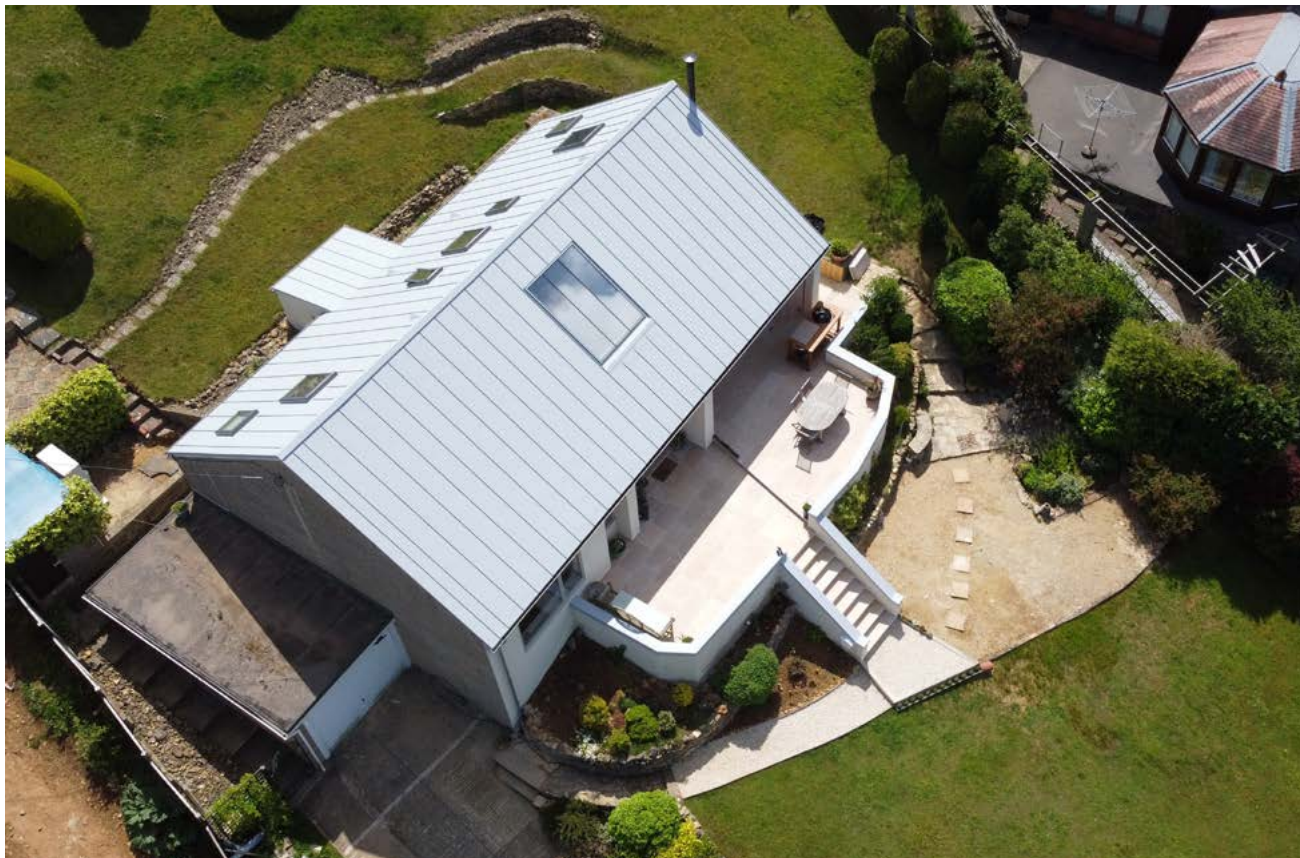
- Top Brands
- Discounted Supply only to trade and retail
- Quality installation service available



REVIEWS

4.82 Rating

sales@arridgegaragedoors.co.uk
arridgegaragedoors.co.uk • 01691 670 394



WHEN DOES COST OUTWEIGH CONSERVATION?

Paul Trace of Stella Rooflight discusses the importance of maintaining the historical integrity of buildings during an economic downturn.

It's hard to imagine a tougher economic climate. Having emerged from the pandemic, businesses and homeowners are beset by the rising costs of fuel and materials, economic shockwaves from the war in Ukraine and stark warnings of 11% inflation from the Bank of England. This is compounded by ongoing building supply issues that are still being experienced as a result of Brexit.

As the cost of most building materials such as timber, steel and glass continues to increase, the impact will most keenly be felt among those working on self-build, renovation and extension projects. No doubt, this perfect storm of economic woe has resulted in the postponement of many such project, however, for those that are pressing on, most will be looking to cut back on budgets in whatever way they can and compromises on quality are inevitable.

Fortunately, when it comes to the majority of building projects, especially new build or modern homes, there is plenty of choice out there for most materials and components, and shopping around a little can yield useful savings. However, if your project is historically sensitive, for example a Listed building, barn conversion or a property in a conservation area, then choices may be more limited.

There are many examples of imitation 'conservation' products on the market, for example plastic being used as a replacement for cast iron rainwater goods, windows and rooflights. While these products might offer a cheaper alternative, there are few, if any examples where these materials should be considered appropriate.

According to Historic England, the public body that looks after England's historic environment, in their Materials for Historic Building Repairs article "The use of authentic traditional materials helps to retain the character of historic buildings and in turn supports traditional industries and vital craft skills. They argue that "some materials can actually harm the existing historic fabric and speed up deterioration", and urge for consideration to be given to "the potential durability of the material used and its future maintenance requirements", they conclude in saying "what might seem like the cheapest option might not always work out so in the long run".

Looking more closely at the rooflight market; just because something is sold as a conservation product, that doesn't automatically make it suitable for all building types.

If a rooflight is going to be introduced it has to meet the conservation specifications of that particular area or type of building. If your building is Listed or in a conservation area then the criteria for using conservation rooflights are much stricter and you should always gain approval, not only for their use but also the manufacturer that you would want to use.

There are only a handful of companies that specifically make conservation rooflights and even fewer who design, manufacture and assemble in the UK. Many conservation rooflights available online are simply other products which have been spruced up to look like they meet the requirements of that type of product. There are many elements which go into a genuine conservation design and price is always a reflection on quality.

If a conservation rooflight is all frame, then there is little point in having one. Genuine conservation designs should be manufactured with slim, clean lines and a low-profile to match the roofline. A number of skylight companies try to produce conservation rooflights using modern bulky aluminium or plastic profiles, which sit proud of the roofline, particularly slate. It is widely accepted that most authentic conservation rooflights are manufactured from steel because it provides great strength while offering a slim profile and excellent glass to frame ratios. There are many types of steel conservation rooflights and for unrivalled protection and lifespan, one should always consider 316 stainless steel, which will protect against the common issue of rust.

Consideration should also be given to the viewable area of a rooflight. Large rooflights do not always guarantee lots of light and you should always check what the finished viewable (often referred to as clear viewable) area of the rooflight will be. You might think that a conservation rooflight with a whole frame size of 900mm (w) x 1200mm (h) would have a similar clear viewable area regardless of the manufacturer, but you would be wrong and bulky framed modern types or the flat rooflights posing as pitched conservation styles will let in considerably less light than a genuine steel framed version.

Understanding what constitutes a genuine conservation product is vitally important in an age where we are witnessing far too many cheaper, often imported, plastic products, being used in sensitive buildings across the UK. The use of such products very rarely contributes anything to historic character of a building, indeed the visual impact of using modern materials on older buildings usually has quite the opposite effect.

While there is no denying that bone fide conservation products are more expensive - and hopefully the reasons for this have been demonstrated above - builders, architects and homeowners must resist the temptation to use alternative materials when looking at areas in which to cut back on budgets. As we continue to feel the economic squeeze we can only hope that decisions are taken in the best interests of the long term preservation of our heritage and that cost cutting does not end up having a long term impact on our important historical buildings.

"As the cost of most building materials such as timber, steel and glass continues to increase, the impact will most keenly be felt among those working on self-build, renovation and extension projects."



► For further information or to discuss your conservation rooflight requirement contact the Stella Rooflight team on 01794 745445 or email info@stellarooflight.co.uk www.stellarooflight.co.uk

MULTIPANEL MAKE IT BRITISH



What did companies that saw significant growth during and after the previous recessions have in common?

In these challenging times, we need to look at those IPG suppliers who are not just flying their 'open for business as usual' flag but are continuing to innovate and introduce new and exciting products to the marketplace.



Multipanel, the UK's leading brand of waterproof wall panels for bathrooms, recently announced the launch of the Neutrals Collection, an exciting addition to their existing marine grade plywood panels which offers consumers greater flexibility in bathroom design and full room application.



Comprising five subtle colours: Creamy White, Parchment, Clay, Dove Grey and Pebble Grey, these contemporary decors are reminiscent of painted walls with a stunning eggshell finish and have been hand-picked to complement the best sellers from the existing Linda Barker, Classic and Heritage Collections.

As with all Multipanel plywood panels, this collection is 100% waterproof with no need for grout and thanks to Multipanel's unique Hydrolock® system, installation is quick and easy and makes it possible to join panels with

a virtually seamless connection.

Made using FSC certified materials, these panels are 100% recyclable, easy to clean and maintain and come with a 15-year warranty. And, importantly in the current climate, they are made in Britain.

John Mortimer, Sales Director, at Multipanel said: "By introducing the Neutrals Collection we are offering consumers even more choice and flexibility in bathroom design. We are confident that our 'perfect pairing' solution will inspire consumers to become more adventurous in their choice of bathroom décor."

The launch is being supported by a complete brochure redesign featuring a step-by-step style guide and designer recommendations. Customers and Installers now have access to new digital assets via the Multipanel website (registration required) to support the launch.

Nike Lovell, Head of Marketing at The IPG said: "For any organisation in times like these, it is especially crucial to focus on good marketing and Multipanel have done just that. The British consumer may now appreciate the value of products made in the UK."

➡ To find your nearest independent stockist visit: www.the-ipg.co.uk



SHEET PLASTICS
The alternative way to buy plastic sheets

KITCHEN SPLASHBACKS | BATHROOM PANELS SHED WINDOWS | ROOFING SHEETS

SERVICES WE OFFER

◆ **Online**
Get an instant quote and order online without any hassle.

◆ **Contact Our Friendly Experts**
You can reach us via phone, email or live chat (Business Hours)



◆ **Various Products**
We offer a vast range of plastic products in cut to size.



◆ **Bespoke Fabrication Services**
We can cut to any shape, get in touch to discuss your requirements.



EMAIL US

INFO@SHEETPLASTICS.CO.UK

CALL US

01455 817 329

ONLINE

WWW.SHEETPLASTICS.CO.UK

NEW FLOORING COLLECTION - HARVEY MARIA PARQUET 2.0



Harvey Maria is excited to announce that its stylish new flooring collection - Parquet 2.0 - is now available to buy online and from approved retailers. Designed in collaboration with Neisha Crosland, the award-winning Parquet design was Neisha's first collaboration with Harvey Maria, and is now a favourite with interior designers and architects worldwide. This brand new series of fresh colourways celebrate the stylish geometric design, and introduces a contemporary palette with a reversed pattern.

Parquet 2.0 is the perfect blend of classic design and modern practicality, creating a chic, playful feel in both modern and traditional interiors. The tiles come in six colourways - Chalkboard, College Blue, Pavestone and Washed Blue. Finally Hunter Green is a limited edition colour and is available by special order only - please see the Lookbook attached for full details, images and swatches.

Neisha Crosland, Designer explains her inspiration for the collection - "A painted floor in an old house inspired this Celtic Cross design. I think it works as an alternative to a chequerboard pattern. It adds style to this very practical, versatile material, so suitable for kitchens, bathrooms, hallways or indeed any area of the house."

All Harvey Maria luxury vinyl tile designs are incredibly durable and easy to maintain, providing a waterproof and slip resistant finish, with a lifetime residential warranty.



All floors work beautifully in busy homes & demanding commercial spaces, and are compatible with underfloor heating.

▶ To order samples, shop the collection & for more details please visit [harveymaria.com](https://www.harveymaria.com)

MAPEI CONCRETE REPAIR SYSTEM PROTECTS & COMPLEMENTS BEACHFRONT SHORELINE



A Mapei Concrete Repair and Protection System has been specified for repair works at Shoreline Restaurant & Bar in Devon. The contemporary glass-fronted venue overhangs Paignton's Eastern Esplanade and benefits from panoramic sea views. Over time, the building's concrete columns, beams and soffits began showing signs of deterioration, with cracking and spalling caused by steel reinforcement corrosion brought on by the aggressive seaside environment.

Due to the weather conditions, the repair works were

completed as part of the first phase of works and Elastocolor Paint Anti-Carbonation Coating System was then applied later.

Mapei Elastocolor Paint is an elastic anti-carbonation coating which protects concrete and cement renders from the aggressive elements that can cause corrosion, making it an ideal choice in this instance for long-term coastal protection.

Elastocolor Paint is offered in a wide range of colours. For this particular project, Elastocolor was applied to an area of 500m²; the shade chosen from the extensive Mapei ColorMap colour range complemented the restaurant and its beachfront setting.

➔ **For more information about the project and Mapei specification, please contact: info@mapei.co.uk**



"GIVE YOUR PROJECT THE FINISH IT DESERVES."

TOTAL COATING SYSTEMS. FROM PAINT TO PLASTER.

Total Coating Systems can supply you with the best spray equipment and service in the country; giving you the help you need to maximise your efficiency.

With a combined industry experience of 80+ years we have a collection of the most versatile knowledge and skill-set to give your project the finish it deserves. Drop us an email or give us a call with any questions you might have!

Jet Pro 100

The Jet Pro 100 is a machine used for applying thin films of fillers. This unit applies all makes ready-to-use film plasters; smoothing coating, raking coating, casing coating, bituminous coating and more. It's round stainless steel tank makes it easy to clean and maintain. Also comes equipped with large diameter, flat profile, inflatable tyres for improved stability.

Apollo HVP Paint Sprayers

The Apollo definitely earns its name... It's guaranteed to maximise your work-rate and efficiency on the job. It has a high transfer efficiency; average of 40 percent paint savings! Continuous clean, dry air combined with excellent atomization and rapid drying makes it a great spray system to get your hands on.

Tritech Electric Airless Sprayers

The Tritex's practical design makes it a must for anyone working in the Painting and Decorating trade. It's made entirely out of raw material sourced and manufactured in the USA and boasts a lifetime warranty on the motor and drivetrain. We supply a range of Pumps starting from the Tritex T5 to the Tritex T9.

SEE OUR WHOLE RANGE OF EQUIPMENT ON OUR WEBSITE!
www.totalcoatingsystems.com



CALL US NOW: 01509 237415 info@totalcoatingsystems.com

SILICATE MASONRY PAINT FOR ALL SURFACES

For years, customers have asked if they can use Earthborn's Silicate Masonry Paint on previously painted masonry. Well, now they can.

The newly formulated Bonding Primer can be used alongside Silicate Masonry Paint for exterior masonry surfaces that do not need to breathe. This means that the 48 beautiful shades can be used on all buildings. Bonding Primer provides a mechanical bond between a 'sealed' wall and the paint, allowing Silicate Masonry Paint to 'stick' to the pre painted surface.

And in places where there is a mix of painted and unpainted masonry, you can now spot prime the patches where the previous paint cannot be removed with Bonding Primer and prime the rest of the unpainted area with Silicate Primer.

The updated Earthborn product range means that Silicate Primer used on uncoated masonry with Silicate Masonry Paint will create a highly breathable and permanent chemical bond. On existing, sound, previously painted surfaces (that don't need to breathe), Bonding Primer used with Silicate Masonry Paint will create a strong mechanical bond.



Earthborn's silicate masonry paint provides the ultimate protection

Earthborn's Silicate Masonry Paint has been used on a wide variety of buildings including windmills, historic halls, new builds, seafront cottages and farmhouses. This new primer means it can be used on an even wider range of buildings, including those with a mix of previously painted and bare masonry, as requested by customers keen to achieve the best protection for exterior masonry.

➔ www.earthbornpaints.co.uk



Earthborn's new Bonding Primer

'MUST HAVE' NEW TIMBER DECKING RESOURCE

The Timber Decking and Cladding Association (TDCA) in collaboration with the Timber Trade Federation (TTF) have jointly published a new resource – the Timber Decking Handbook.

Produced with support from the Wood Protection Association (WPA) and Wood Campus, the Handbook is aimed at specifiers, buyers and installers of timber decking.

A go-to reference

The 52 page book provides clear, relevant and up to date information covering decking design, installation, material choice and UK building and planning regulations. The Handbook references the existing TRADA Timber Decking manual – the two documents will complement each other – the Handbook acting as a summarised and illustrative guidance with TRADA's being more detailed and of particular interest to the architect and structural engineer.

Partnership Agreement

The Decking Handbook has been produced as part of the TDCA/TTF partnership agreement – and on the back of the publication of the Timber Cladding Handbook last year, will help strengthen the market for both timber cladding and decking.



This is all in addition to the TDCA's existing work within the timber cladding and timber decking industries. The organisation operates the DeckMark and CladMark quality schemes, which verify the quality of the materials that have been approved, or the high standards of the installer that has been accredited.

Both the DeckMark and CladMark schemes require a full audit and assessment of the business in question, prior to any accreditation being awarded followed by annual surveillance audits thereafter.

➡ **The handbook will be freely available as a pdf download from the TDCA website at: www.tdca.org.uk/publications with printed versions costing £15 each including P&P.**



For independent guidance on your next project

London Decking Company
DeckMark Accredited Installers



Ensure your timber decking or cladding is fit for purpose through design, specification, material choice and installation.

Whatever the size of your project, TDCA can offer:

- an accredited **materials, supplier and installer** database
- impartial and expert help by phone or email
- inspiration through galleries and case studies
- inspection & expert witness services
- free downloadable resources including **Decking and Cladding Handbooks, Codes of Practice and Technical Bulletins**

email: info@tdca.org.uk

visit: www.tdca.org.uk

The Timber Decking and Cladding Association is an independent, not-for-profit technical and advisory body. It was established to promote the materials, design and installation practices required to create good quality decks, associated landscape structures and cladding on buildings.





ORCHARD HOUSE

Bespoke glazing for a luxury new build home in Radlett

This expansive new build follows a highly glazed design, utilising a number of bespoke engineered glazing solutions to create an indoor-outdoor style of living. IQ worked closely with the architects to design a glazing package that was tailored to the contemporary new build, using a mix of frameless and slim framed glazing systems with technical glazing integrations where required, such as marine grade glazing to the swimming pool area.



The ground floor has been clad in large format limestone, contrasting the first floor which uses render as the primary building material. The neutral and minimal palette allows the oversized glazing to be the primary feature, with natural light playing a key role in the light and airy interior design. The double height entrance design features double height architectural glazing, encompassing a statement spiral staircase that acts as a design feature within the interior design.

Oversized slim framed sliding doors were installed at multiple points throughout the luxury home, granting access to the surrounding gardens and the terraced areas surrounding the dwelling. The floorplan follows an H shape, wrapping around a courtyard in the back garden that features a large tree in the centre and leads to a large decking platform that was created for outdoor dining.

Metal sliding screens have been installed to offer a built-in shading and privacy solution for some of the large elevations of glazing, maintaining the modern and minimal design. The bespoke glazing for a luxury home in Radlett also included a range of architectural glazing solutions including frameless glass balustrades, floor to ceiling glass walls and frameless picture windows to modernise the architectural design.



"Metal sliding screens have been installed to offer a built-in shading and privacy solution for some of the large elevations of glazing, maintaining the modern and minimal design."

to the minimal nature of both solutions. Structural glass walls use neat silicone joints between panes of glass that are extremely slim, mimicking the appearance of the slim aluminium profiles seen on the minimal windows@ sliding doors.

The slim framed sliding doors were installed in a range of configurations including an opening corner, where the glass doors slide away from the corner junction and create a floating roof effect. One wing of the ground floor houses the indoor swimming pool, which utilises minimal windows@ sliding glass doors to create an indoor-outdoor swimming experience that can be enjoyed all year round. The swimming pool glazing has been finished a marine grade to ensure its suitability for the harsh environment it is exposed to.

Structural glass walls, that use our Invisio thermally broken structural glazing system, and slim framed sliding doors go together seamlessly in this luxury new build project, due





Bespoke pressings and flashings were designed to conceal the exposed fixings and create a seamless design, adding to the contemporary and minimal architectural style. Aluminium casement windows from the Sieger range have been paired with the bespoke glazing for a luxury home in Radlett, to maintain a minimal design without compromising on modern performance values.

Solar control coatings were specified for the South facing elements of the glazing package, to combat solar glare and eliminate the risk of overheating within the highly glazed spaces. The architects wanted to create a luxury home with

enhanced security and thermal performance and for this reason, the minimal windows® sliding door systems use an internal security key locking, adhering to part Q building regulations.

All bespoke glazing solutions are fully thermally broken to create comfortable living temperatures all year round, allowing the homeowners to enjoy views of the outdoors all year round and eliminating the risk of thermal bridging.

 www.iqglassuk.com



SCHÜCO

Unfold Possibilities

When you don't want anything in between you and the outside



The new Schüco Bi-Fold Door

Our largest and slimmest bi-fold door yet for maximum light with minimum frames.



www.schueco.uk/unfold



TOUCH

IRONMONGERY LTD

www.atochofbrass.co.uk

210 Fulham Road, Chelsea London SW10 9PJ

CELEBRATING 40 YEARS

One of London's leading Architectural Ironmongers

Originally called "A Touch of Brass", TOUCH changed their name in 2003 in reaction to advancing market changes in architectural Ironmongery to reflect the broader range of products and finishes that they sell.

In fact today Touch supply 20 different finishes including Brass, Satin Brass, Polished Chrome, Polished Nickel, Satin Nickel, Copper, BMA, Antique Brass, Black, Pewter, Ceramic, leather, Stainless Steel, Satin Stainless Steel, Gun Metal & 4 different shades of Bronze and the list keeps growing. Whatever finish you require, Touch can help you get the right look.

Touch occupy their recently refurbished showroom at 210 Fulham Road, Chelsea, where they stock and display a vast range of their 5,000 products. With a customer base including Architects, Interior Designers, Builders and private Individuals who are interested in the quality end of the Ironmongery market, the company also have a healthy export market to all corners of the world, namely the Middle East, Europe and the Americas.

Touch Ironmongery's owner and founder, Bill Benham, has 42 years' experience in the Ironmongery trade, as does his colleague Jim Haselup. Saleem Qureshi is the newest member of our team and has 21 years' experience, meaning their knowledge is unrivalled in this industry.

The range of products supplied by Touch date from circa 1640 French (Louise XIV) and cover all subsequent periods (Georgian, Edwardian & Victorian), Art Deco and contemporary pieces also make up the product ranges.

Touch showcases the very best of British manufacturing; the best ranges are still produced in the Midlands by craftsmen in factories dating back 200 years or more.

Touch Ironmongery have recently become suppliers for **Designer Doorware (Australia)** Who have beautiful products with a cutting edge design Metal, Wood and concrete. We also have the exclusive rights to sell the **Olaria (Barcelona)** range in the UK.

Olaria make all our bespoke products, they have incredible levels of workmanship.

Touch also sell European manufactured goods which are considered to be of a very good quality.

With trends continuously evolving new and innovative products are constantly under development.

Touch understand that keeping up with the fashion-shifts is imperative in order to provide every customer with the best solution for their requirements.

Ironmongery can be a difficult and complicated aspect of a building project, as a result Touch aim to take this awkward aspect and make it user friendly and clear to understand by offering an on-site service where they carry out a detailed door by door, window by window, room by room Ironmongery schedule, highlighting all requirements and identifying all requirements.

Restoration is a large part of the business Touch will undertake complete Ironmongery refurbishment projects, and can restore old paint covered door furniture to their former glory, looking as good as new again at a fraction of the cost to replace.

For more information about Touch Ironmongery or to arrange a showroom visit please call 0207 351 2255 or alternatively visit www.atochofbrass.co.uk



BRITISH & EUROPEAN MANUFACTURERS SUPPLYING THE FINEST QUALITY IRONMONGERY

Touch combine traditional skills with modern manufacturing techniques to produce the most beautiful, quality fittings, built to stand the test of time.

As well as specialist bespoke items, Touch supply over 1000 products, available in 23 different finishes to furnish high end residential and commercial properties, royal palaces, government houses, historic castles and stately homes.

Olaria, available from Touch Ironmongery

**www.atochofbrass.co.uk
& www.olariabarcelona.com**



CONTEMPORARY FAMILY LIVING WITH HAVWOODS

A charming and handsome abode in one of London's infamous rowing areas, Putney House is a sophisticated family home in South West London.

Beautifully adorned with luxury art deco style influences, the kitchen, hallway and living space were given a substantial renovation by Nancy Gouldstone Architects and a fresh new look by designer The Roomologist.

Beautiful wooden flooring by Havwoods was installed to enable a seamless flow throughout the downstairs of the property. The light tones of the Venture Plank floorboards create an open and spacious look that flows seamlessly through every room, complementing the handsome dark furnishings and the natural light that pours through the floor to ceiling windows, skylights and Crittal doors.

The kitchen is at the heart of the property as the flooring pairs perfectly with the natural materials of the dark wooden cabinetry, marble surfaces and rattan furniture. Statement hanging pendants and eye-catching gold brassware stand out against the dark colour palette creating a look that is not only modern but luxurious and timeless.

Sweeping elegantly through the hallway, the flooring changes to herringbone for an on-trend entranceway allowing for natural zoning without the need for walls, with the cooler Scandi colourway still in place. The Crittal doors that lead into each room allow the light to travel even further, creating a contemporary sense of fluidity and place.



Havwoods' industry leading knowledge and innovative aesthetics consistently provide advanced wood floor solutions that meet the needs of any client request.

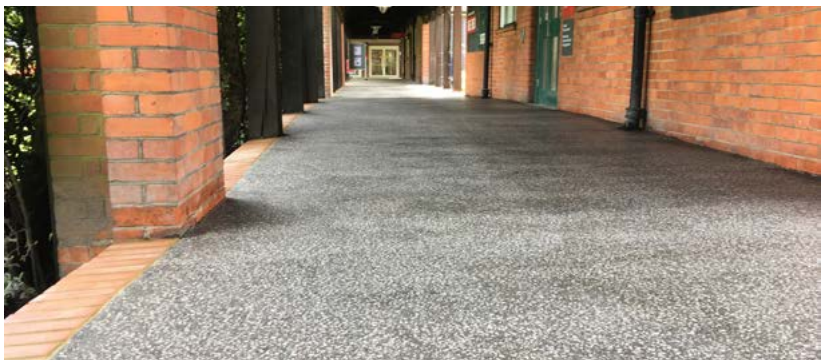
www.havwoods.com/uk
info@havwoods.com
 +44(0)1524 737000

TERRAZZO TREND FOR MASTIC ASPHALT FLOORING AND PAVING

Mastic asphalt is ideal for construction projects where a seamless, waterproof, durable surface is required. Commonly associated with roofing, tanking, flooring, paving and screeding projects due to its ability to offer total waterproof protection, the Mastic Asphalt Council (MAC) has recently seen a trend emerging of the use of mastic asphalt flooring incorporating terrazzo.

The long and rich history of terrazzo, with archaeologists discovering terrazzo as far back as 8000 years ago, is testament to its status as a construction material that stands the test of time. Modern interpretations of terrazzo have been created by combining decorative stone chippings with mastic asphalt, which is then polished to create infinite possibilities in any design situation.

Some perceive mastic asphalt terrazzo as having a distinctly 'retro' look and no two installations are ever the same, as the aggregate is exposed as part of the finishing process. Other finishes can also be created - such as matt or smooth - as opposed to the highly polished effect normally associated



with terrazzo. Different visual effects can be created depending on the size and type of aggregate added at the mixing point to create a bespoke finish.

Mastic asphalt terrazzo offers the durability and distinctive features of terrazzo and consists of a traditional mastic asphalt base with a modern finish. Slip and skid resistance can also be incorporated into the wearing course of the mastic asphalt. In addition, mastic asphalt terrazzo is suited for both internal and external applications.

[Web: www.masticasphaltpcouncil.co.uk](http://www.masticasphaltpcouncil.co.uk)
[Email: info@masticasphaltpcouncil.co.uk](mailto:info@masticasphaltpcouncil.co.uk)
 Tel: 01273 242778



THEFLOORINGSHOW.COM

    @TheFlooringShow

Image courtesy of Victoria Carpets & Design Floors



REGISTER NOW

18 – 20 SEPTEMBER 2022
HARROGATE CONVENTION CENTRE



SCAN THE QR CODE OR HEAD TO
WWW.THEFLOORINGSHOW.COM TO REGISTER

CELEBRATING
60
YEARS
1962-2022



THE FLOORING SHOW
18-20 SEPTEMBER 2022
HCC, HARROGATE

WHY CHOOSE RADIATOR OUTLET?

WELL, WE ARE THE HOME OF AFFORDABLE RADIATORS!

Here, at Radiator Outlet we have built a healthy reputation over the last 5 years of providing fantastic quality radiators at affordable prices. Throughout this duration, we have supplied our radiators to thousands of customers throughout the country and acquired over 13,000 5-star reviews stating how attractive and efficient our radiators are once fitted in your home!

All our radiators are manufactured to the highest standards, with no corners cut when it comes to materials used or the manufacturing process. We only supply the highest quality radiators to our customers; our reputation means too much to us to offer anything less.

Our company 'mission statement' is to provide high quality radiators at affordable prices. And that is just what we do.

When buying radiators from Radiator Outlet, you can be assured of warm, reliable and super stylish radiators arriving quickly at your door!

It is no secret that costs have drastically increased due to the covid 19 pandemic with many companies in all industries looking for alternative materials to keep costs down. Despite these global issues, our radiators are identical in specification to pre covid 19 with the same thickness of steel, high quality packaging, super impressive heat outputs; and showroom standard coated finishes, ensuring the same level of satisfaction every time!



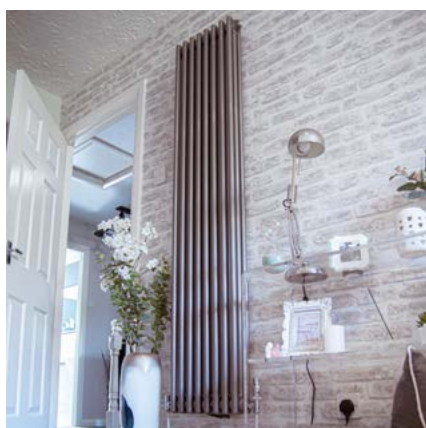
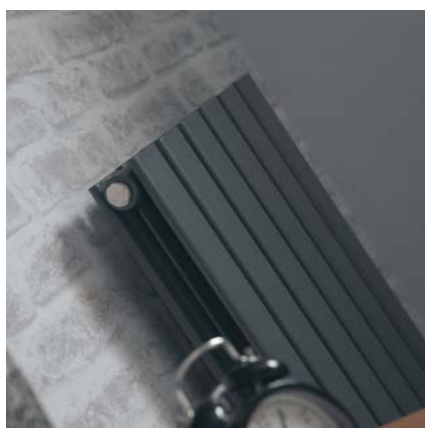
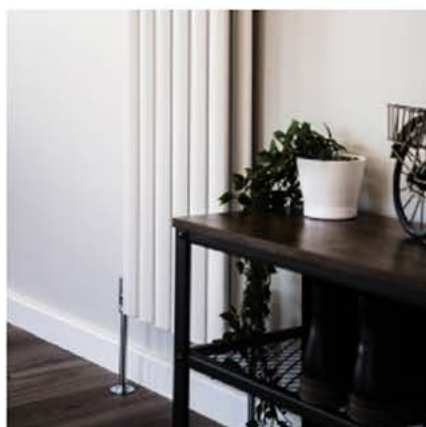
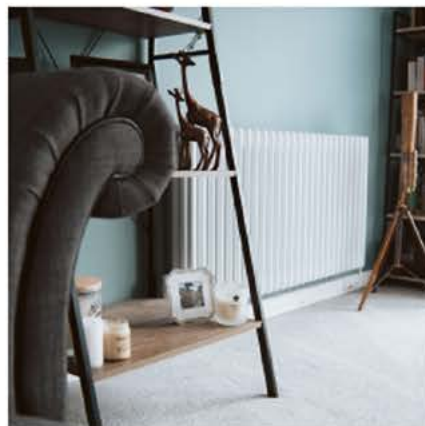
Another core fundamental to Radiator Outlet, is the fact we manufacture our own radiators and have warehouses storing our catalogue of radiators, meaning that stocking issues are rare. We are in complete control of the supply chain, meaning any delays from third parties are not a factor when buying from our website.

Finally, and most importantly as a customer, should you have any issues down the line, your hassle-free 10-year warranty is with us directly, so you are covered. No long-winded process of chasing your radiator manufacturer, you have bought from us, we supplied your radiator, it is down to us to resolve any issues.

 www.radiatoroutlet.co.uk

radiatoroutlet

THE HOME OF AFFORDABLE RADIATORS



For more information, please contact us.



Phone: 0845 860 5908

Website: www.radiatoroutlet.co.uk

Email: hello@radiatoroutlet.co.uk

Beautiful Designer Ceiling Fans



Powerful - Reliable - Silent



THE HENLEY FAN COMPANY LTD



01256 636 509
www.henleyfan.com

myneo
Fluid Curved



- + Directly connectable to Internet through your Internet provider box without any other accessory.
- + Can be remotely-controlled by your smartphone, tablet or computer and by voice with the MYNEOMITIS free application.
- + Full color touch screen with customizable display, easy to read.
- + Extra-flat occupancy detector, dual occupancy detection.
- + Auto-programmable with dual optimization feature.



NEOMITIS®

4th Floor, Lincoln House, 300 High Holborn, London WC1V 7JH, UNITED KINGDOM
Tel: +44 (0) 2071 250 236- Fax: +44 (0) 2071 250 267 - E-mail: contactuk@neomitis.com
www.neomitis.com



RADOX RADIATORS

Our popular Quartz Mirrored Radiators are now available in so many new colours...

Sunburst, Pearl Green, Blue Sapphire, Yellow and Rose Gold just to name a few...

These radiant New Mirror colour shades are the perfect addition to bring colour and warmth to a favourite room in your home.

Radox Quartz Range: so much more than just a Radiator...

www.facebook.com/RadoxRadiators/
info@radoxradiators.com +44 (0) 1225 782 819

www.radoxradiators.com



WHEN A SWITCH IS NOT JUST A SWITCH

Explore the possibilities of what can be done with the press of a button



One of the benefits of a home with automation is that the wall switch has progressed to the point where it is capable of being programmed to carry out a variety of functions.

Wall switches that incorporate a number of functions (especially those with heating and lighting) and any sort of display tend to be called room controllers.

Most makes of light switch can be expanded so additional buttons can control additional features.

With a system such as KNX there is a huge choice of different switches from different manufacturers and most have a variety of frame and button styles and colours.

So what can be achieved with a set of buttons, here are some examples:

- Lighting scenes setting a number of different circuits to different light levels all at once
- Adding additional lights to a button press - may be some external lights need to be switched them from inside the house.
- Controlling functions other than just lighting, may be an automated blind or shutter could be added to a second button, in the case of assisted living buttons on one switch plate can include lighting, blinds, window openers and door openers.

The trend for the automated home is to keep the wall furniture very immediate and functional and to always label in some way a switch with multiple buttons. For functions that require greater time to set, the app is the ideal setting, setting timer schedules for heating, towel rails or lights and storing and saving lighting scenes.



www.household-automation.co.uk
www.knxion.co.uk

householdautomation

Est: 1999

Control of your home from your smartphone

Consultation and design

Comprehensive automated control:

Lighting, heating and blinds control using KNX equipment (www.knxuk.org)

Forward thinking service and maintenance



e-mail: info@household-automation.co.uk | **tel:** 0330 2232101

www.household-automation.co.uk



MOJO DESIGN STUDIO – PASSIONATE DESIGNERS

Creating Interior Masterpieces

Every designer at Mojo Design Studio has a specific intention, theme, and message in mind when creating their exceptional, unique projects. While the studio showcases so many outstanding pieces, Luxury Lifestyle Awards has selected Concentric Circle by designer Ching-Hsiang Pen as the 2022 winner of Best Luxury Apartment Interior Design in Taiwan.

Ching-Hsiang Pen knew from the beginning what he had in mind for this particular design. He wanted the concentric circles to tie all the elements of the home together, and represent the family unit – parts of a whole, working together as one. He stated that “home is a permanent haven for the family where the family is united as a whole.”

The entire design is based on the concept of concentric circles, and in this case, the designer uses the idea of concentric circles to interpret the spatial movement, aiming to link family boundaries through the design, through the guidance of space, to increase more interaction and communication between family members.

This design and concept of concentric circles is used to link all the spaces within the particular apartment, and the half-wall design and glass sliding doors are used to open up the vision of the space.

The living room with TV is placed in the center of the apartment to avoid sunlight reflecting on the TV during the





day, while leaving the natural light to come in through the study window. The designer wanted the living room to be the center of the circle, and the design of the space creates a family centripetal force. The half-circle design on both sides of the TV wall symbolizes the embrace and care of the family.

Ching-Hsiang Pen made use of penetrating materials to separate public areas on the same axis, in order to create a flexible space. He focused on what the residents would need, and how they might want to use and interact in the space, which is why the living space is designed in an open style.

In order to meet the concern of height difference between male and female owners in the kitchen, the talented designer specially designed the kitchen table and the work surface with different heights, and combined the dining table with the bar, so that each family member can work together and interact in this space.

He said that the greatest obstacles he faced during this design process were balancing the different style preferences and living habits of the family members, coordinating the different elements in this space, and transforming it into an aesthetic home space. "By transforming the layout, reinterpreting the spatial scale and boundaries, using penetrating materials and lines to

"This design and concept of concentric circles is used to link all the spaces within the particular apartment, and the half-wall design and glass sliding doors are used to open up the vision of the space."

extend the visualization of the space, and generating spatial centripetal force through the design, the family connections are united in this space."

Another noteworthy design created by Mojo Design Studio includes Balance by designer Angie C. Chang, in 2021, the goal of which was to simplify the problem of space and preferences that couples face after having a baby. This was done through focusing on spatial design and arrangement. Angie Chang says: "the project is both open and private, satisfying the needs of parent/child interaction and independent space, enhancing emotional interaction while maintaining the integrity of each, and striking a balance between lifestyle and childhood interest."

► To find out more about this successful company, visit <https://www.facebook.com/mojo20151025>

EXEDRA2: DOUBLE POCKET DOOR SYSTEM WITH CAM-ASSISTED DOOR EXTRACTION AND CUSHIONED DOOR INSERTION



Exedra2 Star

Exedra2 is the innovative and exceptionally-performing evolution of the Exedra pocket door system which, thanks to its ingeniously-engineered mechanism, enables the simultaneous opening of two linked doors.

The system is available in two versions: Exedra2 Star where the compartment that houses the mechanism is always hidden by the cover panel which is fixed to the front of the system.

In the second version, Exedra2 Smart, the door edges are visible when they are folded into their compartment and, as a result, the system requires less depth of the cabinet.

There are no load-bearing frontal profiles on either the top or bottom of the cabinet, thus eliminating any need for

additional central supports. Furthermore, the absence of a frontal lower track makes it adaptable to systems raised from the ground or placed on a cupboard or a chest of drawers.

In addition to its elegance, Exedra2 also stands out for its practicality of use. Opening and the closing of the doors with one hand is effortless, thanks to the handle fixed at the edges of the doors. This smoothness of movement means that doors can be closed quickly and easily, making Exedra2 a functional and practical solution in a host of application, from kitchens and living rooms to walk-in wardrobes, home office solutions, laundry rooms and in storage applications.

www.salice.com

Exedra²



Exedra2 Smart



Exedra2 Smart



Salice's Exedra2 double pocket door system enables the user to open and fold a pair of cabinet doors into their recess in a smooth and virtually effortless one-handed operation.

A perfectly fluent and balanced movement conferred by a sophisticated magnetic control system that governs the speed of the insertion and extraction of the doors.

Available in two versions: in Exedra2 Star, the folded doors are behind a special cover panel; in Exedra2 Smart, the door edges are visible when they are folded into their compartment and, as a result, the system requires less depth of the cabinet.

The most innovative and modern application for kitchen cabinets or walk-in wardrobes, an expression of flawless design and the epitome of elegant functionality.

Exedra2

**THE EVOLUTION
OF THE
SPACE OPTIMISATION**



SCAN HERE TO SEE THE DOORS OPEN

salice.com

SALICE



DESIGN FOCUS: CUSTOM COLOUR

Bespoke fitted furniture

Individuals are gaining more confidence with colour in the home, and as a result, British bespoke fitted furniture brand, Neatsmith, has seen a 40% rise in custom paint requests (Farrow & Ball options being the most popular). With colourful hues becoming a stylish choice that more individuals are opting for, Neatsmith offers a bespoke colour lacquer service that brings personality and personalisation to any interior.

Whether it is a walk-in wardrobe, study or media unit, Neatsmith's knowledgeable expert designers will create a clever storage solution that streamlines the home. Working around awkward architectural features such as sloped ceilings, chimney breasts, alcoves and more, fitted furniture in a deep or vibrant hue will add contrast and dimension to the space.



Whether it is a popular Denim blue hue or a custom sage green tone to invite tranquillity, Neatsmith's custom lacquer service allows individuals to be creative and elevate their fitted design with colour.

Neatsmith's team of dedicated designers, cabinet makers and highly-skilled fitters work to prioritise design, quality and expert service to ensure a timeless concept that lasts.

"Neatsmith's knowledgeable expert designers will create a clever storage solution that streamlines the home."



COUSINS *Summer* SALE

Make this Summer one to celebrate...

Living | Dining | Sleeping | Flooring

Birmingham | Dudley | Newcastle-Under-Lyme | Shrewsbury

cousinsfurniture.co.uk

Visit Cousins' Summer Sale, you will not be disappointed!

Visit us in-store or online to experience our latest inspirational collections. Whether your taste is contemporary, traditional, modern, or classical, Cousins Furniture has a style for every home.



Pay nothing
for a year.
No deposit.
Interest Free



Furnish every room of your home all under one roof.

The choice is enormous and all of our collections are beautifully displayed in truly inspirational room settings. Everything has been reduced, including all leading brands. If you're in a hurry to refresh the look of your home, Cousins Furniture has many quality items in stock and available for quick delivery. As the Midlands' leading family-owned furniture retailer we champion local suppliers, and showcase our own Bespoke sofa and bed services. Our friendly and experienced sales staff will be on hand to give you all of the advice you need. Why not visit us in store and experience it for yourself. Come early to take advantage of our Extra Discounts off all Summer Sale prices for the start of the sale only.



2022 BEDROOM TRENDS

From furniture specialist, BA

BA, one of the UK's leading manufacturers of factory-built, bespoke and made-to-measure kitchens and bedrooms and specialist components reveal the latest furniture trends, which are set to influence the UK bedroom and wardrobe market in 2022-23.

Nuala Brady, Group Marketing Manager at BA says, "Given how lifestyles have changed in the last two years, flexible design solutions have really come into their own, becoming a great way to add value in the bedroom and cater to the virtues of hybrid living as more people work from home. As dedicated office space is now a real consideration, 2022-bedroom trends are placing an emphasis on multilateral design schemes that are tailored to both the space and individual.

If we consider the last two years alone, then the bedroom has become 'all things to all people' and key areas of focus will prioritise well-considered door design and furniture suites, which capitalise on every inch of available storage space."

Find out how you can ensure your bedroom and wardrobe space is on trend in 2022-23, with the following advice by BA:

DOORS: Enhanced by a range of accessories and interior options, we are finding that sliding doors remain the front-runners in the lifestyle bedroom thanks to their space saving qualities. Where a hinged pocket-style door requires enough space to swing open, sliding doors operate sideways and this makes them the ideal solution in the compact bedroom, guest room and more recently, home office. Bi-fold doors are just as practical, regarded in the bedroom as a low maintenance solution that provides easy access to the full width of your closet with half the floor space: especially when compared to a hinged door arrangement.

STYLE: The love for contemporary and traditional bedrooms continues in equal measure, however we are seeing new appetite for the blended space, which is taking elements from both interior styles to create one complete look. For instance, the slab door usually associated with contemporary bedroom schemes is now being paired with classic wood finishes and decorative hardware and this is helping to bridge the gap between old and new. More recently, we are noting a desire for opposing furniture styles in the same scheme where different doors like slab and in-frame are now coming together to create a bedroom that is designed for all.



COLOURS & FINISHES: The neutral colour palette remains a timeless choice in the bedroom with core classics like white, light grey and blonde woods being paired with subtle pastel shades like blush pink and denim blue. Different surface treatments are also making a feature of the wardrobe door, adding new levels of design and durability in the bedroom with ultra gloss and matt finishes becoming the most popular in more contemporary décors for adding personality and visual depth.

LAYOUT: With many wardrobes occupying the majority of space in the bedroom, we are finding that combination furniture designs that accommodate 'his and her' storage is on the rise, and this is welcoming innovative interior solutions to help keep you organized behind the door. Full-height wardrobes are therefore dominating the bedroom market, with the addition of both single and double hanging space helping to cater to all types of clothing, from shirts and jackets through to evening dresses and winter coats that require the full height of a wardrobe.

The featured images show the following 2022 innovations by BA:

- [Left] **New Style:** Bella Bedroom Furniture Range, Venice Doors in High Gloss White with Matt Black T-Bar handles and integrated dressing table, designed with a thick White countertop and White Oak interior. This walk-in dressing room arrangement also features a 5-drawer Tallboy Chest also in White, Dimensions H1118 x W800 x D480mm.

"The love for contemporary and traditional bedrooms continues in equal measure, however we are seeing new appetite for the blended space, which is taking elements from both interior styles to create one complete look."

- [Above] **New Style:** Zurfiz Bedroom Furniture in Ultragloss Metallic Blue finish with hinged doors and white interior. This new style of wardrobe includes the following configuration of units from left to right - 1x Double Hanging Unit, 1x Single Hanging Unit with left-hand Shelves, 1x Double Hanging Unit, 1x Single Hanging Unit with right-hand Shelves, 1x Double Hanging Unit.
- [Next page top] **New Colour & Style:** Bella Bedroom Furniture, Carrick Doors in Matt Cashmere finish with Windsor knob handles in Satin Chrome. The new Carrick door style presents a modern take on the classic shaker-style door, presenting a lightweight inframe design. This built-in wardrobe arrangement with Urban Oak accent details features a series of internal cabinets like the Single Hanging Cabinet with internal drawers, hanging rail and shelf shown in Urban Oak. A complementary window seat in the same style and finish shows you just how versatile this range is in a bedroom setting.



- [Below] **New Colour & Style:** Bella Bedroom Furniture, Venice Doors in Matt Blush Pink with Slim D chrome handles and two tall shelving units in Urban Oak – Dimensions H2260 x W300 x D590mm. The new Venice style doors are paired with two 3-drawer chests also in Matt Blush Pink and Urban Oak, Dimensions H712H x W800 x D480mm and on each side of the bed sits a matching 2-drawer Bedside Chest, Dimensions H509 x W400 x D480mm.
- [Right] **New Style:** Zurfiz Bedroom Furniture in Ultragloss Metallic Blue finish with Urban Oak integrated dressing table and matching Ultragloss Metallic Blue 2-drawer bedside chests, Dimensions H509 x W400 x D480mm.



The new Zurfiz style offers a made-to-measure collection of ultra-modern slab doors available in 26 colour options. Choose from a mix of ultragloss and supermatt solid colours, metal effects, woodgrains and metallics, some of which have three edge options – matching, glass or plywood effect.

▶ For BA, please contact: t +44 (0)28 8676 4600
e sales@byba.co.uk | w www.byba.co.uk

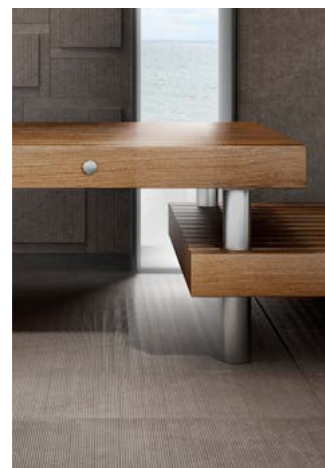
For the latest news & company updates, please follow BA on Facebook, Twitter, LinkedIn & YouTube, plus Blossom Avenue on Pinterest #WeMakeTheDifference

LAVENZZA

PORCELAIN - CERAMIC - ARCHITECTURAL - COMMERCIAL - DESIGN

Design – Texture – 3D – Anti Slip

'Design' Tile Collection by LAVENZZA is a minimal high-tech multi format, rectified porcelain stoneware tile range with high-level design features and anti slip properties. Due to its quality and strength, this is the ideal tile collection to use when designing stunning bathrooms, living areas, coffee shops and hotel receptions.



Have you ever wondered why it is so hard for designers and architects to create stunning interiors that incorporated features and can live up to the expectations of the modern day client? Well LAVENZZA has the answer.

Manufactured in Italy and with passion that you could only expect from the Italian's, Design is a minimal high-tech collection for environments with an elegantly engineered feel.

Design consists of four colors that are available in three modular sizes. The modulation allows within your design to seamlessly match up grout lines from the wall to the floor and use a combination of sizes. Further more, a textured anti slip variation can be used as either a preventative to a slip hazard on the floor in commercial locations or for the use on the floor of a bathroom shower enclosure. BUT it doesn't stop there. The anti slip tiles are also feature tiles with a ribbed and grooved texture providing something touchable, something visually pleasing and something that shows style.

3D wall tiles are instantly eye catching and can be used in lots of different ways from full feature walls to bathroom alcoves. The tiles are mounted onto a mesh backing which makes installation simple.

Thanks to research, care and study in which simplicity is the absolute goal. Design is enriched by the possibility of using it in **combination** with another tile collection **'Fire & Black'**, for stylish, on-trend coverings. Both collections show the effects of time in natural earthy colour's, thanks to advanced technologies.

For more information contact:

info@lavenzza.co.uk

0208 108 5999

www.lavenzza.co.uk



LATHAMS ADDS TRANSFORMAD®'S HIGH-TECH TMATT AND CRYSTAL COLLECTIONS TO ITS CATALOGUE

Transformad's ultra-stylish new surfacing ranges, Tmatt and Crystal, join James Latham Ltd's expansive collection of decors and finishes.

Responding to an increasingly popular design preference for visually striking, sensuous, tactile and hard-wearing surfaces, Tmatt is a silky-textured surface with an ultra-matt finish, while Crystal is notable for its high-gloss, highly durable finish.

Manufactured using the highest-quality MDF core and the very latest in surfacing technology, Tmatt and Crystal embody high-performance meets style. They are resistant to scratching, abrasion, moisture, and heavy impact. Designed to be used in demanding interior environments, such as kitchens, bathrooms, walls, ceilings or even furniture, they can withstand heavy use whilst retaining their aesthetic appeal.

Commenting on these new additions to the Lathams catalogue, Paul Morson, Group Melamine Product Manager, says, "Transformad is one of the world's most forward-thinking materials manufacturers, and these surfaces directly respond to a number of new design trends coming to the fore, particularly the desire to balance looks with longevity,

and strength with sustainability. We have a reputation for bringing the very latest premium, and innovative, architectural products onto the market. When we first saw Tmatt and Crystal, we instantly knew we wanted to be the first to offer UK specifiers unfettered access to these high-performance surfaces."

Transformad's Nicolás Villaverde added, "Working with partners whose initiatives align with our own is very important to us, and Latham's dedication to innovative materials and sustainable design made them a natural choice to launch Tmatt and Crystal in the UK. We look forward to collaborating with them to promote these high-tech surfaces, distributing them without disruption to construction and design professionals nationwide."

Furthermore, the introduction of these two unique products, exclusive to Lathams in the UK, form part of the distributor's wider Summer 2022 Decors Campaign, which will showcase its extensive stock range of over 1,400 brands, styles, textures and colours.

SENSUOUSNESS ON THE SURFACE

Aesthetically, Tmatt is a new collection of lacquered supermatt surfaces, which achieves a delicate-looking surface that surpasses initial perceptions. Irresistible to the touch, it's also completely smooth, with a silken texture.

"Dialling-up the gloss factor to 11, Crystal also has a wide range of attractive finishes, from solid colours to faithful representations of Concrete and Bronze."



Produced in a range of on-trend colours, such as Smeraldo green, Terracotta red and a dark, inky Blue as well as subtler white, grey, beige and black, the Tmatt range embodies understated elegance with a signature softness and warmth. Warm woodgrains in Legno Fumè, Toscano and Elba have also been incorporated into the collection, responding to a growing 2022 trend for natural timber finishes.

Dialling-up the gloss factor to 11, Crystal also has a wide range of attractive finishes, from solid colours to faithful representations of Concrete and Bronze.

The bright, clear definition of the collection's highly-reflective finish makes it easily distinguishable from other, similar products. The maximum degree of gloss, achieved with a UV lacquer coating, gives it a light, clean and contemporary feel. This treatment also gives the surface essential hardness, important for maintaining its visual appeal in physically demanding environments.



THE UNION OF TECHNOLOGY AND NATURE

Easy to work, Tmatt and Crystal are perfect for a wide variety of surfacing applications from kitchen doors to bathroom splashbacks, and even interior cladding and furnishing.

Possessing superior performance qualities, both surfaces are manufactured using the latest material finishing technology to confound initial functionality expectations.

Highly resistant to staining and scratching, properties across both ranges include: anti-fingerprint treatment, high durability and abrasion resistance. Tmatt even possesses the ability to thermal-heal surface micro-scratches to maintain a consistently flawless finish, day-in-day-out.

Both surfaces are hygienic, safe and easy to maintain. Perfect for residential and commercial interiors, they are CARB2 certified, meeting the current emission standards set by CARB.

Tmatt and Crystal are Latham's-exclusive in the UK, available in panel sizes of 2850 x 1220 x 18mm, as well as a wide variety of colours and tones to suit almost any design brief.

► To discover Latham's wide range of decorative surfaces, and realise the potential for almost any design preference or requirement, www.lathamdigitalshowroom.co.uk



EASipanel is the perfect way to achieve a classic wall panelling effect in a fraction of the time. It is cost effective and gives a seamless, high quality finish in any room. Can be used effectively in many rooms including bathrooms, kitchens and garden rooms.

- 6mm moisture, resistant high quality MDF
- Tongue & Groove style, in two sizes
- Raised & Fielded style, in two sizes
- Can be used on stairs, to follow on from hallways
- Can be applied directly onto existing walls with grab adhesive
- Dado moulding and corners available in range
- Invisible jointing system
- Professional finish
- Call the team for advice and availability.

W: www.easipanel.co.uk | T: 0113 271 8311 | E: info@easipanel.co.uk



Kazak 450 x 320cms £4,200 + VAT.

If you use Persian or other handmade Oriental rugs in your room settings, you may find our stock and prices of interest.

To see examples click norell.uk

LEON NORELL
(Est. 1925)

8 Atlas Business Centre,
Oxgate Lane London NW2 7HJ
(half way up)

Tel: 020 3441 5803
Email: leon@leonnorell.com

By appointment if possible please

SPA LAMINATES LTD



Photo credit: Blythswood Square Hotel



Photo credit: Sofitel St. James

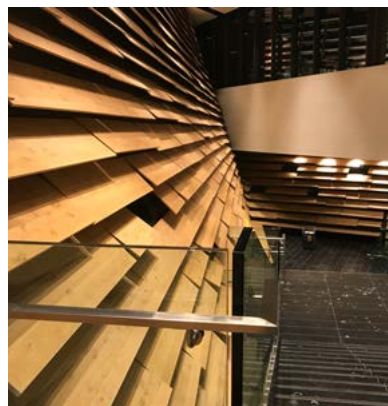


Photo credit: V&A Dundee

Spa Laminates is a well-established UK based company specialising in veneered panels and bespoke joinery.

We have been involved with projects at Sofitel St. James, Claridge's Hotel and The Berkley Hotel, and have worked with the luxury yacht industry for many years.

Spa supports Museum + Heritage and have helped with the restoration and fit out of various historic building including V&A Dundee, Glasgow Film Theatre and Stormont.

Working with architects and interior designers, we source and supply bespoke matching veneers to suit various interior design demands for commercial or residential.

Our team of experts are on hand to share their experience.

59, Pepper Road, Leeds LS10 2TH

T: 0113 271 8311

W: www.spalaminates.co.uk

E: info@spalaminates.co.uk



MEGANITE®
Acrylic Solid Surface
MOVEMENT SERIES

It's all about
**MARBLE &
CONCRETE**

Achieve beautiful spaces with marble and concrete



M009
Mt. Crema Carrara



M020
Mt. Grigio



M021
Shadow Concrete



M022
Taupe Concrete



M023
Charcoal Concrete



Distributed by

Arnold Laver

0843 382 1920 | laver.co.uk

Fantasy living

Whatever your design ideas, you'll find inspiration to complement and elevate them in the dp-fantasy collection from Decorative Panels Lamination.

A range of finishes that nature cannot provide, fantasy represents the best in material technology from the printing industry with levels of design realism like never before.



Finish shown: Marble Rocks



Contact us for more information.

Century House, Premier Way, Lowfields
Business Park, Elland, West Yorkshire, HX5 9HF

T: +44 (0) 1484 658341

E: info@decorativepanels.co.uk

www.decorativepanels.co.uk



INSINKERATOR® BRAND AMBASSADOR, KELLY HOPPEN CBE, SHARES KITCHEN DESIGN TIPS

InSinkErator® brand ambassador, and renowned interior designer, Kelly Hoppen CBE, recommends key kitchen design tips to help you think creatively about your next kitchen project.

Kelly's own personal style includes creating harmonious, neutral interiors where people, art and objects are the colour in the home. For Kelly, the home is very much about living and how it's used. It must look beautiful, but at the same time be practical. Kelly Hoppen CBE has endorsed the entire InSinkErator® portfolio of specialist kitchen taps and food waste disposers.

Since the global pandemic, creating individual spaces within the home is key and what's interesting is the kitchen, which Kelly believes is the heart of the modern home. The kitchen is the hub of the home, it's for the entire family, the one room in the house that everyone uses and it's this element which makes the kitchen and the way it's designed so important.

KELLY HOPPEN CBE RECOMMENDS:

- Before designing their dream kitchen, encourage your customers to take a look at their existing set-up and pinpoint what works and what doesn't work. From here, you can determine what you need to prioritise in their layout, fixtures and highlight the 'must-have' features in their new design.
- The heart of the modern home is the kitchen; it's where we tend to meet, eat, cook, and entertain. Personality and detail are important in the design scheme, but don't underestimate the importance of functionality here; the last thing you want is to be nudging guests out of the way to reach for serving utensils.

- The perfect entertainment area also needs to double up as an everyday living space; ask your customers to visualise the time they regularly spend in the kitchen and work around that. Whether it's placing a quiet armchair beside the window for their morning coffee and a moment's meditation or positioning the dining table to soak up the afternoon light while they work or write.
- I'm a big believer that less is more in a kitchen space, so installing discreet, convenient products is always a priority. One great time and space-saving tool that I always fall back on is an InSinkErator® steaming hot water tap, perfect for a quick cup of tea. Also, a simple way to boost sustainability is with an InSinkErator® food waste disposer, diverting organic matter away from landfill and into a circular economy.

"Kelly Hoppen CBE has endorsed the entire InSinkErator® portfolio of specialist kitchen taps and food waste disposers."



The, Kelly Hoppen endorsed, InSinkErator® Showroom Collection includes a variety of specialist kitchen taps and food waste disposers, designed to complement a range of kitchen styles and décor preferences, offering convenient, time-saving and sustainable benefits to the end user. To highlight the partnership, trade partners have access to a brochure, featuring imagery of Kelly Hoppen using InSinkErator® products in her own country-style home and complementary POS for their showroom. In addition, via a dedicated webpage, trade partners have access to a library of downloadable website assets, social media content and videos to use across their own marketing channels.

Anne Kaarlela, Marketing Communications and Customer Service Manager, Europe, InSinkErator®, says: "We are delighted to share Kelly Hoppen's top tips for designing a kitchen in a post-pandemic world, supporting our trade partners with advice from a multi-award winning interior designer. Kelly Hoppen CBE has also given the full portfolio of InSinkErator® products her seal of approval, which retailers can highlight to their customers with the raft of POS we offer."

➡ **For more information on any InSinkErator® products, please contact your Account Manager or visit the website: www.insinkerator.co.uk**



SILENT AND DISCREET – NEW UNIT FROM ELICA COULD BE THE HILIGHT-X OF CEILING HOODS



Elica has added to its range of concealed ceiling hoods with HILIGHT-X, available in a standard 30cm depth and an ultra-slim 16cm depth, for even the most demanding kitchen installations without sacrificing high levels of extraction. In addition, there is a remote motor version – also 16cm deep - with a choice of 4 different motors for all types of external and internal installation.

Fitted flush with the ceiling, HILIGHT-X's attractive steel panel with two elegant LED strips cleverly conceals the powerful and silent extraction system. This is designed to guarantee maximum performance even at a significant distance from the cooktop.

All models are available in black or white lacquered steel or stainless-steel finishes so they are suitable for any kitchen.

HILIGHT X has Elica's Super Easy Installation system for installation in just a few simple steps. After the hood is locked in place it can be finely adjusted so it is perfectly flush with the ceiling and for flexibility the blower unit can exhaust in any of 5 directions. All models of HILIGHT X can be converted into recirculating mode with optional accessory kits that provide excellent performance with up to 80% odour removal.

HILIGHT-X's two powerful, energy efficient LED strips provide excellent warm ambient lighting and the Dim Light function also allows you to adjust light intensity.



The H16 model has a boosted airflow of 720 m³/h and a maximum noise level of 69 db(A). The more powerful H30 model offers a boosted airflow of 780 m³/h and a maximum noise level of 63 db(A). Both models are rated energy class A.

► For more information, visit: <https://www.elica.com/GB-en/hoods/ceiling/hilight-x>



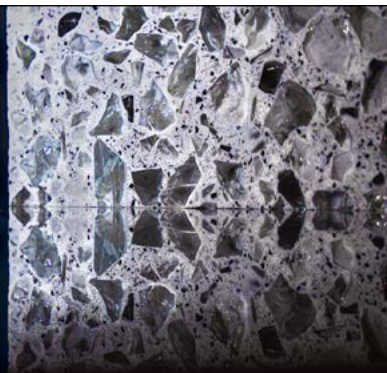
STAINLESS STEEL

SINKS • WORKTOPS • CABINETS • SHELVING



GEC ANDERSON®
the stainless steel specialists
www.gecanderson.co.uk

apollo®
by Sheridan
recycled glass



Apollo® Recycled Glass is a stunning new Quartz style worktop available in two styles - Grey Shell (Pictured) and Blue Star, with new variants coming soon in 2020.

Sheridan are the only UK company with Recycled Glass worktops in batch production. This new style of material has a similar strength & appearance to large-chipped Quartz worktops; but with glass fragments up to five times the size.

This glass is reinforced with Quartz crystals and resin binders to create a worktop with literal depth of character; and the quality to last for years to come.

Call our sales team on 0345 618 2800 for samples and more information, or visit our website.

WWW.SHERIDAN-UK.COM/GLASS

Commodore Design - Bespoke As Standard

CKL
commodore
design create install



Stylish Kitchens, Sell Homes

Heart of the home. Social space. The place where we feed the ones we love. Regardless of how you'd describe yours, the fact is great kitchens sell homes. And 'Commodore Design' kitchens sell homes even faster.

We design kitchens that homebuyers fall in love with. Our 50 years of contract kitchens experience and industry leading future trends analysis can help you predict fashion forward styles and must have features ahead of time. Thanks to us, the kitchens you specify now, will be bang on trend when your customers are ready to sign on the dotted line.

Whatever style, dimensions, materials and finish you're looking for, we can design to your brief and add the clever extra touches that will set your development apart.

Work with us and our wealth of consumer insights today, and you can be confident of kitchens that excite and delight your customers tomorrow.

www.commodoredesign.com
hello@commodoredesign.com





KITCHEN ISLANDS TAKE CENTRE STAGE

Central to over three quarters of kitchen designs is the island.

Whether it is a small transitional link to the living room in an open plan kitchen, or a large statement piece of furniture, the kitchen island is the heart of the kitchen and the home.

Following the pandemic, the kitchen has transformed into a place where food is prepared and socialising takes place, homework is done and home offices created, and above all it is the place to relax and enjoy time with family and friends. So the kitchen island has to be a multi-performance design to suit whatever activity or time of day.

On one side it will commonly be a major storage facility where long linear drawers can house pans, crockery and cooking ingredients. Flip to the other side where the breakfast bar or banqueting seating will provide the 'social' element of the kitchen. On trend is often a change in cabinet material for this function to provide a warmer style with timber finishes becoming popular.

As bar stools become more comfy padded chairs the social side of the island is the perfect place for working, chatting or simply interacting with those preparing food.

Gone are bulky overhead extractors to take away odours and very popular is downdraft extraction either incorporated into the hob or as a pop up. Most hobs are now located on the island as cooking becomes a more visual and social activity rather than functional.

If space permits a small prep sink is perfectly located on the island, complete with a boiling water tap to provide instant hot drinks or water for boiling veg, pasta etc. Small wine fridges are sneaking into the island too to enhance social times. Or go one step further and install a counter top cooler on the island for a really luxurious addition.

As you'd expect from such a key part of furniture in the home, the shape of islands has evolved. Curves, double connecting islands, floating islands and everything in between help make this vital piece of kitchen design steal the limelight. Consider accent lighting under the island to enhance its beauty and allow for changing the mood of the kitchen with different colours.



"As you'd expect from such a key part of furniture in the home, the shape of islands has evolved."

Activity space round the island is a key consideration as everyone must be able to move around freely. A good kitchen designer will look at all these aspects and design the island that works best with you and your family's lifestyle. Consider all these design features when designing your home centrepiece!

 www.kitchensinternational.co.uk



STONE-INSPIRED GLAMOUR COMES TO THE KITCHEN WITH TWO NEW CERAMIC SURFACES FROM CRL STONE



Enabling the luxurious look of marble and natural stones to be introduced into the kitchen and bathroom with ease, CRL Stone has introduced two new styles into its Ceralsio Ceramic surface range, both inspired by this unabating trend.

Boasting all the natural beauty of marble combined with the many practical advantages of Ceralsio, Macchia Vecchia is a visually striking surface, available in a natural polished finish. With its distinctive gold veining, Macchia Vecchia can be bookmatched, transforming an island into a stunning focal point.

Just as glamorous is Allure Black, the second of the two new Ceralsio colours. Full of depth and with an air of mystery, this dark stone-inspired ceramic with its natural finish is brought to life with the light silvery grey veining that runs throughout its chocolate brown background.

As versatile as they are beautiful, Macchia Vecchia and Allure Black work in harmony with other organic elements in the modern or classic setting, from metals to glass and from brushed finishes to high gloss surfaces.

With all the beauty of natural stone, Ceralsio Ceramic is a highly durable, practical alternative that is suitable for kitchens and bathrooms. The surface is totally impermeable,

completely stain and scratch resistant, very thermally stable and shock resistant. It is also UV resistant, making it the ideal surface in areas with large windows as the colour will not fade over time.

Macchia Vecchia and Allure Black require no sealing, with just a mild detergent and warm water needed to keep the low maintenance surfaces sparkling clean.

► For more information, brochures and free samples call CRL Stone on 01706 863 600 or visit www.crlstone.co.uk



SPACE IS NOT CREATED, IT'S FREED.

NIKOLATESLA FIT, YOUR ENTIRE KITCHEN IN JUST 60 CM.



SMALL
SIZE



COMFORT
SILENCE



COOK
RESPONSIBLY

Take back your space with NikolaTesla Fit by Elica, the compact extractor hob designed for small kitchens. It captures fumes and odours faster than they can rise, guaranteeing high efficiency as silently as possible. Equipped with high-performance ceramic filters that ensure 80% filtration efficiency, which can be regenerated for up to 5 years - for those who care about the air they breathe every day at home and the world outside.

Discover all the benefits at elica.co.uk

NikolaTesla Fit | Design Fabrizio Crisà



A BEGINNER'S GUIDE TO LANDSCAPING YOUR GARDEN

We are increasingly viewing our gardens as extensions of our homes that can be specifically designed to suit our lifestyle, whether we enjoy lounging in the sun, entertaining friends or even cooking!

Although there are multiple elements to consider, your garden should reflect your personality, cater to your needs and importantly, fully utilise the space's potential.

BLEND & BALANCE

Being able to blend and balance your needs and wants is key. Consider how the space will be used, when you want to use it and who it will be used by.

Each area should be specifically designed to fulfil its dedicated purpose, whether it's an outdoor kitchen, hot tub or decking area. It should incorporate the right elements at the right scale to work effectively, including the use of plants, paving or structural features.

FORM FOLLOWS FUNCTION

Focus on creating a practical 'outline' of your garden, ensuring each area is accessible and interlinked with good circulation.

Assess where the sunny/shaded areas are, which areas are open to any prevailing winds, and which are more sheltered. This will determine what shading/screening is required, as well as the ideal placement of patios, seating areas and focal points.

MASS & VOIDS

When designing the outline of your garden, both the 'mass' (planting) and 'voids' (patios/lawns) should blend seamlessly with the property, incorporating comfortable seating and a decent view.

Adding plants and materials through specific structural elements such as screens, frames or anchors will add colour and texture, resulting in a cohesive, harmonious effect throughout.



ENGAGEMENT & PERSONALITY

A focal point is a great way to create engagement. A quirky water feature or large tree can add personality, while a statement bench can help define the purpose of the space.

Suited to both a classic or contemporary garden design, a structural feature such as a pergola not only provides instant shade and shelter, but also adds a strong and striking architectural element, effectively creating height and a 'frame' around a particular view. The addition of side screens, LED lighting and infra-red heating will allow you to make the most of your indoor/outdoor living space at all times of the day (or night) and in any weather.

As part of a recent project, Kate Marshall Garden Designs and Ashworth Landscapes installed the Deluxe version of the Caribbean Blinds Outdoor Living Pod™ within a residential property in Lower Holbrook, Suffolk.

www.cbsolarshading.co.uk

"Adding plants and materials through specific structural elements such as screens, frames or anchors will add colour and texture, resulting in a cohesive, harmonious effect throughout."



CARIBBEAN
BLINDS UK LTD

Classic

outdoor living pod™

built to order & installed
in less than 8 weeks

 **MADE IN BRITAIN®**



FROM £11,990 INC. INSTALLATION
SCAN QR CODE TO FIND OUT MORE

t 0344 800 1947
e info@cbsolarshading.co.uk
w cbsolarshading.co.uk





TREX DECKING

When it comes to deck designs, more homeowners are thinking outside the box. Regardless of the size of the garden – or budget – Brits no longer feel confined to a basic square space. Remodelers, designers and architects report increased interest from clients in decks with multiple levels, accent walls, curves and cantilevers.

A great deck can add valuable space to a home, and materials matter. Designed to deliver incredible durability, easy maintenance and lasting beauty, Trex composite decking offers performance, sustainability and aesthetic benefits over timber, as well as other outdoor surface materials.

While aesthetics drive many deck-building decisions, homeowners across the country are just as interested in performance. Unlike timber, Trex composite decking resists fading, staining, scratching and mold – and won't rot, warp, crack or splinter. No sanding, oiling or painting is required, and food and drink spills wash off easily with just soap and water. Plus, it's made from 95% recycled materials, so it's an eco-friendly choice that clients can feel good about.

Featuring high-definition, grain patterns and rich, saturated colors, Trex decking offerings are nearly indistinguishable from timber textures. Available in a wider variety of color options, composite boards range from deep earth tones to spicy reds and pristine greys, including tropically-inspired boards that feature the distinct streaked look of exotic hardwoods.



➡ To learn more about Trex composite decking and other outdoor living products, visit uk.trex.com. Trex decking is available locally through Arbordeck stores www.arbordeck.co.uk

Wild Flower Turf

Have you considered using wild flower turf? Flowers all through the growing season.



Flowering Lawn Turf
Simple to cut to shapes



Grass free wild flower turf
Softens and colours a garden quickly



20 square metres laid throughout a small garden



Beautiful results in 6 - 8 weeks

See our full range of wild flower turfs with wild orchid seeds on our website
www.wildflowerlawnsandmeadows.com



**SAVES
TIME, MONEY
AND ENVIRONMENT**

EcoExpert

- 100% recycled and recyclable
- Strong
- Waterproof
- Retail and consumer-friendly
- No need to take the pot off, just plant it straight into the ground (degrades naturally)



WWW.MODIFORM.COM



CORK, THE GREEN SOLUTION FOR PLAYGROUNDS

Contributing to the goal of carbon neutrality in the cities

Architects and designers increasingly seek eco-efficient materials and solutions that ensure quality and comfort without harming the environment. Combining ecology and performance, cork is one such product and has tremendous potential in the fields of urban construction, rehabilitation and outdoor areas.

All over the world, a growing proportion of people lives in cities. Big or small, old or new, cities are becoming our natural environment. According to the United Nations, about 55% of the world's population currently lives in urban areas, and it is estimated that this percentage will rise to 68% over the coming decades*. By 2050, two thirds of the world population will live in urban areas.

CORK AND THE GREEN CITIES OF TOMORROW

In this context, it is imperative to increase the quality of life in urban centers, both in terms of comfort and in terms of environmentally friendly solutions in new buildings, rehabilitations, and outdoor spaces.

Cork, as a renewable natural raw material that plays an important role in the reduction of greenhouse gases, is gaining momentum in the area of sustainable and eco-efficient construction, mainly due to its thermal insulation properties and acoustic and vibration control capacities.

EVERYTHING BEGINS IN NATURE

Cork is a natural, 100% recyclable, renewable raw material obtained from the cork oak tree (*Quercus Suber L.*). This oak species whose bark (cork) regenerates itself is mainly found in Southern Mediterranean countries and North Africa, and has an average lifetime of 200 years. Portugal is the leading cork-producing country, responsible for over 50% of total European cork production.

Studies indicate that for each ton of cork produced, the cork oak forest can sequester up to 73 tons of CO₂**, and thus helps to reduce the Global Warming potential and contributing to the goal of carbon neutrality in the cities.

"It is lightweight, with high flexibility and compressibility, resistant to moisture, friction and abrasion, and has thermal, acoustic and vibration insulation capacities."

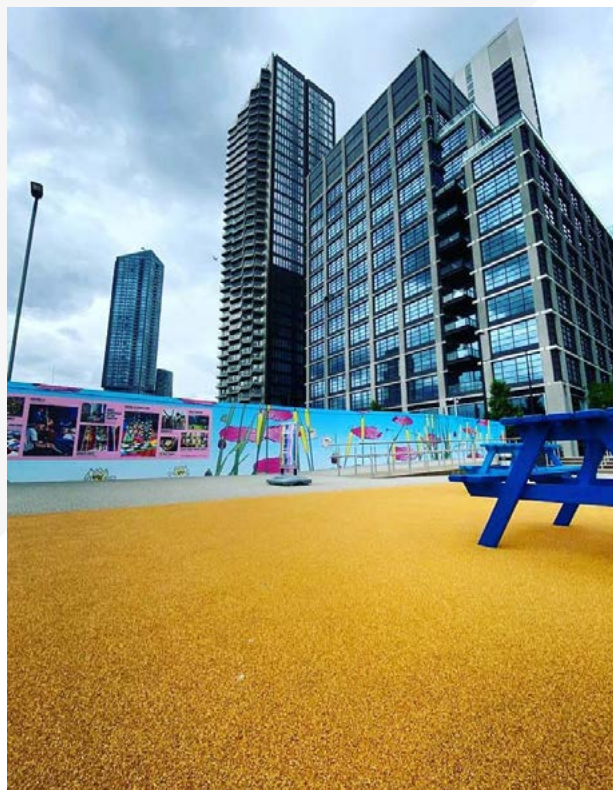


CORK'S NATURAL BORN TECHNOLOGY

Cork consists of a honeycomb structure, including thousands of microscopic cells, filled by an air-like gas and coated primarily by suberin and lignin. Suberin is the element that makes cork impermeable to liquids and gases, allowing it to age without deteriorating.

In addition to its insulation capacity, cork has a series of other characteristics that enable a broad range of applications in building construction.

It is lightweight, with high flexibility and compressibility, resistant to moisture, friction and abrasion, and has thermal, acoustic and vibration insulation capacities.



SAFER AND MORE ACCESSIBLE PLAYGROUNDS – CORKEEN BY AMORIM

Given its positive contribution to outdoor and leisure areas, urban parks and playgrounds, cork can be used as a safe, stable and sustainable surface, due to its main characteristics: lower surface temperature, impact absorption, odorless, drainage capacity, lightweight, fire-retardant and hypoallergenic.

Additionally, its resilience creates a cushioning effect, which makes floors extremely comfortable for walking and standing. But, more than comfortable, playgrounds made by cork need to be safe.

The playground industry in Europe has defined children's safety as one of the top priorities. To reduce the risk of severe injuries, EN1176 & EN1177 has been introduced to the market. EN1176 is the European Standard for play equipment and surfacing. It regulates criterias within the playing area. One of these requirements is the need for safety surfacing below playground equipment.

That's why Corkeen is the revolutionary surfacing system for playgrounds. As a safe and stable surface, it complies with EN1176 and EN1177. Corkeen system has been tested by Labosport in France according to EN1177 and has passed those tests, receiving certificates on system thicknesses from 40-135 mm.

The use of playgrounds encourages the construction of social and intellectual skills through increased interaction. It enhances group dynamics among children, in a learning and recreational environment, including, in many cases, the involvement of the family. These surfaces are typically installed in schools or outdoor parks and must incorporate the natural world around them, fitting into their environment.



@GASPAR, all rights reserved

The green space is vital for the activity and elements such as water or cork provide children with a dynamic environment, which gives the space characteristics that they see, sound and feel as interesting. Corkeen responds to this need, combining safety and sustainability, satisfying the most demanding requirements of any project. It is also an inclusive system, providing full accessibility, even in a wheelchair or using other mobility equipment.

A WASTE-FREE FUTURE: EMBRACING THE CIRCULAR ECONOMY

To protect the future, we need to rethink the way we approach waste. The Corkeen vision is committed to developing a circular future, turning what once was seen as waste into new creative opportunities. Reusing and recycling as much as possible, extending the life of products and regenerating our natural ecosystems are all part of the solution. When the take-make-dispose model is no longer viable, the need for a paradigm shift arises.

To produce Corkeen, PlaySmart guarantee full utilization of harvested material, ensuring that, just as in nature nothing is lost and everything is transformed. Even the smallest cork granules are used as a valuable energy source. Over 60% of their energy needs are met through the use of biomass (cork dust), thereby minimising greenhouse gases and reducing their carbon footprint.

PLAYSMART'S COMMITMENT TO SUSTAINABILITY GOES A LONG WAY

Using a 100% natural and renewable material is only the beginning. In PlaySmart's operations, they use biomass as an energy source, and value the byproducts resulting from the production of cork stoppers. They give a new life to cork stoppers at the end of their life cycle, by making cork granules that reenter the production process, and are used in new products. In fact, at the end of the Corkeen system's life cycle, all materials are reusable, giving life to new products.

In this way, the end becomes the beginning, and the wheel keeps turning.

CORKEEN HAS A NEGATIVE CARBON BALANCE

The carbon balance of the Corkeen system is -102kg CO₂ eq/m². This means that the Corkeen system promotes carbon sequestration in the cork oak forest that exceeds the CO₂ emissions from its production.

The Environmental Footprint study conducted by EY, according to a Life Cycle assessment, which also considers the carbon sequestration of the cork oak forest, was based on the cradle-to-gate approach, that contemplates the environmental impacts of all activities, from the extraction of raw material, through the production of all components to the factory gate. It also included the transportation stages and on-site installation of the system.

The analysis considered the fact that the Corkeen system is installed in situ, as a two-layer system (the bottom layer at the base, for impact absorption, complemented by a wear-proof top layer).

► For more information please visit our website www.playsmartuk.co.uk or contact us on info@playsmartuk.co.uk or 01564 742 811





PlaySmart UK

PlaySmart UK has spent almost 20 years operating as the leading innovator in surfacing for play, leisure, and recreation

If you are planning a public, community or school play area, a landscaped space or even a roof top garden with a surfacing element then PlaySmart can support you. All solutions have been tested, where appropriate, to BS EN177 and BS EN 7188 and come with our no quibble guarantee.



We have a range like no other provider in the UK featuring a **100% sustainable** solution in Corkeen. Produced with cork, a raw material of natural origin, reusable and recyclable the Corkeen system is the sustainable, ecological, and safe solution the world of play and landscaping has been waiting for. Corkeen can be installed into play areas, pathways and public spaces and can also achieve a Fall Height of up to 2.7m.

PlaySmart also offer a **natural** solution in **Nordic Lawn Hybrid Grass**. Nordic Lawn protects and stabilises natural grass and the open mesh structure allows the natural grass to grow through. This solution is safe, soft, easy to install with minimal ground preparation required. It is perfect for worn grassed areas, parks, public spaces or slopes. When combined with **SmartPlay**, our patented shock pad, Nordic Lawn achieves 2.7m high fall height in a play area.

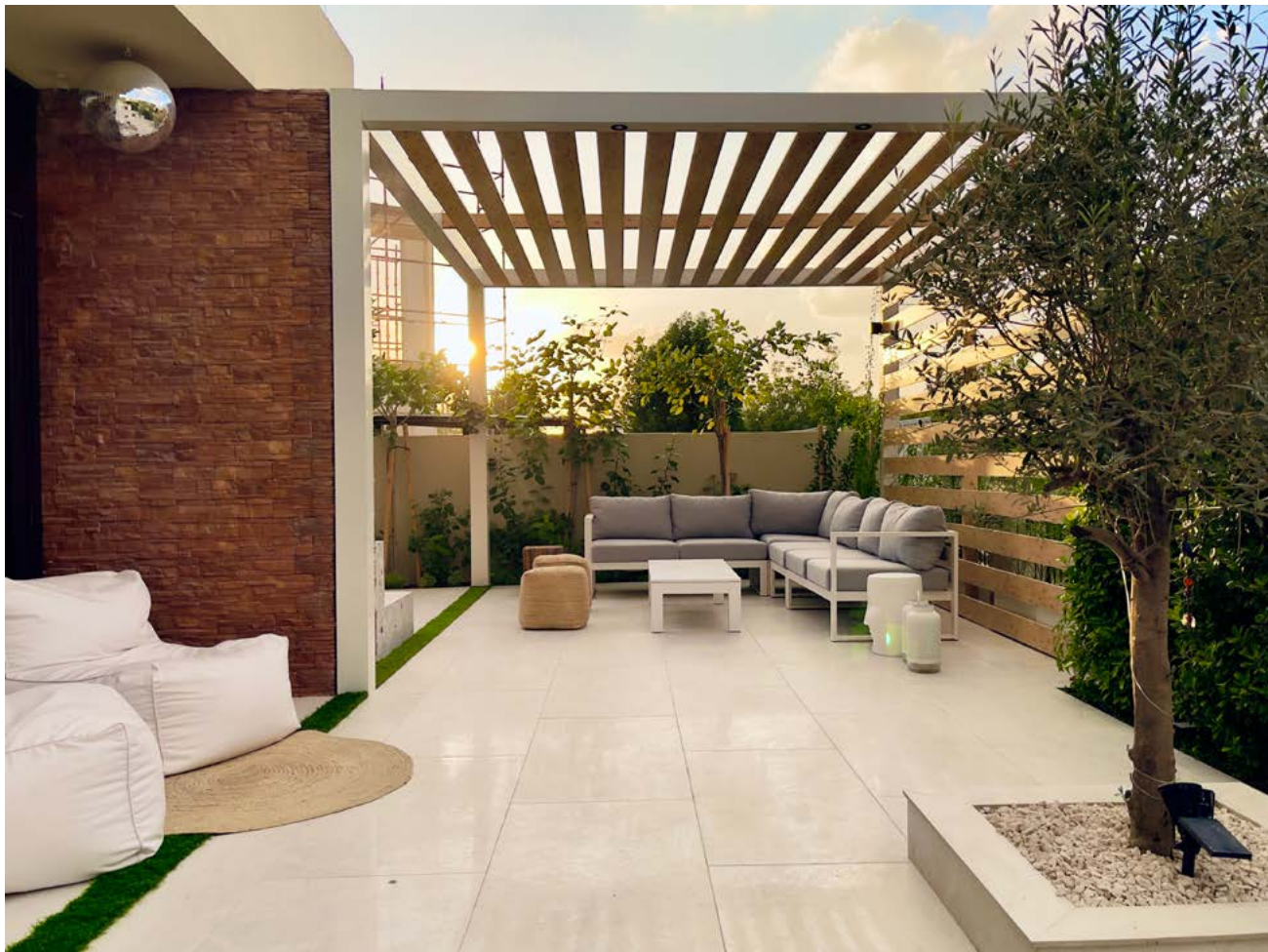
More traditional surfacing solutions are also available from PlaySmart;

Green Frog Artificial Grass, **RubbaSmart** EPDM, **JungleMulch** bonded mulch & **EcoSmart** grass mats.
We also offer fire retardant grass mats in **FireSmart** which complies with BS7044.

For more information please visit our website

www.playsmartuk.co.uk

or contact us on **info@playsmartuk.co.uk** or **01564 742 811**



GREEN GARDENIA LANDSCAPING LLC ARE TURNING SPACES INTO AN OASIS OF SERENITY IN DUBAI

If you're looking for a landscape architect and gardening design company, dedicated to providing first-class services to their clients, then look no further than Green Gardenia Landscaping LLC, in Dubai.

The team at Green Gardenia Landscaping consists of highly trained professionals that offer expert gardening design and landscaping services, turning your space into your very own oasis of serenity. Their gardening design solutions can be personalized to suit your distinctive needs and they offer their services to both commercial and residential institutions such as property developers, parks, and more. With such high standards and dedicated service, it comes as no surprise that the company was awarded by Luxury Lifestyle Awards for Best Luxury Interior Landscaping for Private Villa in Dubai, UAE, 2022.

The award-winning and luxurious Private Villa was inspired by a light, white and wooden look following the interior theme of the living room. The idea was to have a consistent inside-outside extended view and bigger garden area. The pergola outside creates a subtle play of light across the

white matte-finish tiles, which provides a neutral look of the garden with soft textures and colors seen throughout. The BBQ area is a bespoke design of big porcelain slabs for walls and an island in the center, which is great for entertaining guests on a lovely weather day. The garden is decorated with seasonal flowerpots and the water feature element is a masterpiece as its gentle sounds allow for a tranquil walkway experience.

Founded on the principle of 'Estidama' which translated means 'sustainability,' Green Gardenia Landscaping sets its goals to provide the highest quality construction services and designs to satisfy their clients' project goals. Their works promote sustainable development that supports planting drought tolerant plants, water reduction irrigation technologies and other factors that can provide aesthetic value to the environment, whilst preserving the heritage

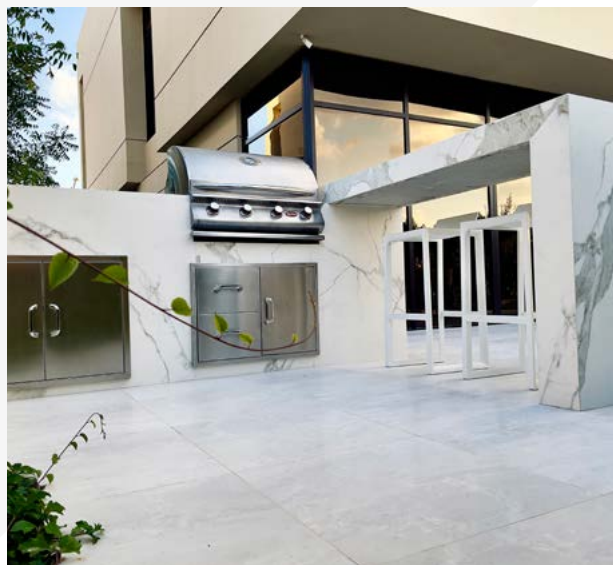
"The award-winning and luxurious Private Villa was inspired by a light, white and wooden look following the interior theme of the living room."

and culture of the community. Every phase of landscaping works starting from the design stage, construction, and maintenance phase of both residential and commercial projects, takes sustainability into massive consideration.

Following the current environmental trend, it has become imperative to preserve the natural world we live in. Businesses in both the private and commercial sectors are trying their utmost best to nurture our natural resources so that we can live in a greener and more sustainable world, paving a positive pursuit for future generations. That's why companies like Green Gardenia Landscaping deserve to be celebrated for their innovation and dedication to preserving natural landscapes whilst simultaneously creating design solutions to improve the existing environment. They pride themselves on their company values dedicated to providing the best viable solutions for all landscaping matters.

Green Gardenia Landscaping are the leaders in the landscaping industry in Dubai because their customer service and satisfaction is at the root of what they do. The team works on fully understanding their client's needs and exceeding their expectations at the same time. The architects, designers and gardeners strive to create uplifting surroundings and vibrant spaces, giving your property a touch of life that ignites happiness and serenity, and a little bit of magic. Green Gardenia Landscaping is a perfect amalgamation of science, sustainability and art, making them one-of-a-kind in the their industry.

► For more details, please visit: www.greengardenia.ae





Ardini floor lamp, £269, lights&lamps, www.lightsandlamps.com



Lina Antique Brass Chandelier, £319, lights&lamps, www.lightsandlamps.com

HOW TO ADD VALUE TO YOUR HOME WITH GREAT LIGHTING

Lighting choices are very important when it comes to selling your home.

Lighting can be used to not only make a property more aesthetically pleasing, but it can also work alongside the current structure to improve the space in terms of usability and functionality. Small, cramped spaces can benefit from strategically placed lighting to give the illusion of more space. While focal points can be emphasized, energy costs are reduced with the right materials being used. From maximising natural light to considering north-facing rooms, consider these lighting design tips to maximise the potential of a property.

MAXIMISE THE NATURAL LIGHT FOR POTENTIAL BUYERS

'The positioning of lighting is key to any scheme. There is always a darker, north-facing side to every home and the use of lighting is an easy solution. Sellers shouldn't be afraid of turning on a light during the day, even in spring and summer. Illuminating a dull corner with a table or floor lamp or

washing a dark wall with a well-placed wall light can make a huge difference to the energy and feel of a room,' says Niki Wright, Co-founder of lighting company lights&lamps.

CREATE AN INVITING AND WELCOMING ENVIRONMENT

Lighting creates a huge impact, both on and off, so think about every area of your home from the front door hallway to bathrooms and alcoves. Wright advises: 'Walk through your home and think about the mood you want to create and the light that is required or is missing.'

CONSIDER THE LIGHTING FOR THE SEASON

It's important to use different lighting in different seasons. Ceiling lights are perfect for darker days but may need dimming or even switching off when relaxing by the fire or TV. Think of lighting as the sun. Big and bright in the

day, becoming lower and softer by night. When ceiling lights are no longer needed to see by, switch on a larger floor lamp, when the evening progresses, they can then be complemented or replaced by a more subtle table or bedside lamp. Imitating the setting sun is a great way to transition your living space throughout the day and bring peace and calm before bed.

‘Generally speaking, cool white or even daylight bulbs are only really good for high task or work space areas where there is no natural light. Layering warmer light is a more natural way to brighten your living space and help transition the day into the evening. The use of brighter ceiling fittings in the day is often a subtle enhancement to natural daylight. Dimming them down in the evening and complementing them with low level lamps can transform a bright space by day into a cosy living room by night,’ says Wright.

"Think of lighting as the sun. Big and bright in the day, becoming lower and softer by night."

CREATE A GOOD FIRST IMPRESSION AND ADD INTEREST TO A DECORATING SCHEME

‘Adding wall lights to a hallway is a great idea and investing in an electrician to add in the wiring required is a worthwhile investment. As it's likely to be a high traffic area of the home, the flusher to the wall the better,’ says Wright. ‘Don’t rely on just a single overhead light, layer lighting levels from several sources, with a mix of table lamps on surfaces, floor lamps, and wall lights to cast a cosy glow. Highlight any focal point features or architectural details with accent lighting.



Imperial collection, prices start from £69, lights&lamps, www.lightsandlamps.com



Ridotti collection, from £69, [lights&lamps](http://lightsandlamps.com),
www.lightsandlamps.com

LAYER YOUR LIGHTING

Ceiling lights are perfect for darker days but may need dimming or even switching off when relaxing by the fire or TV. Think of lighting like the sun. Big and bright in the day, becoming lower and softer by night. When ceiling lights are no longer needed to see by, switch on a larger floor lamp, when the evening progresses, they can then be complemented or replaced by a more subtle table or bedside lamp. Imitating the setting sun is a great way to transition your living space throughout the day and bring peace and calm before bed.

STRATEGIC LIGHTING SOLUTIONS FOR THE HEART OF THE HOME

Kitchens need to work hard and so does the lighting. 'Recessed spotlights or undercabinet lighting is a common solution, but also consider the space when it's not being functional. Family and friends often congregate around an island so consider low-level or pendant lighting here. Don't be afraid to use 'living room' lighting in the kitchen: a floor lamp in a corner or a table lamp at the end of a worktop. We have seen our customers use pendants for above an island or table, wall lights for above or below a shelf, floor lamps to light the corner of a dining space and a statement flush ceiling fitting which perfectly complements each piece in larger or open-plan spaces.'



Ridotti Matt Black Raffia Pendant, £139, lights&lamps, www.lightsandlamps.com



Orta - 1 light warm white cone table lamp, £109, lights&lamps, www.lightandlamps.com

LIGHT UP THE MOST WANTED ROOM IN THE HOME – THE HOME OFFICE

Working from home has had a massive acceleration over the last couple of years and the integration of a home office is still an important part of interior design. Wright notes: 'From a lighting aspect, it's important to create a space that means task lighting doesn't have to be so utilitarian. A light or lamp that can adapt or reposition from practical use to a more home-focused and considered design item. The best desk lamp is one that lights up your workspace, without taking up too much of your desk and without looking like you're in a commercial office.'

➡ www.lightsandlamps.com

"Lighting creates a huge impact, both on and off, so think about every area of your home from the front door hallway to bathrooms and alcoves."



Porsa - 1 light brushed brass and warm white porcelain pendant, £89, lights&lamps, www.lightsandlamps.com

EDGE LIGHTING MADE EASY

Enhancing an interior can be an expensive task but not utilising our unique LED edge lighting profiles. Designed to be cost effective yet create stunning results. These profiles become the key component to a lighting concept.

Options being for a flat ceiling or a corner detail the aluminium trims form a sharp edge perfect for plastering to. The aluminium also acts as the perfect heat sink for LED keeping the running temperature low.

For the LED strip, simply select the colour temperature and output, whether it is single colour, dim to warm or colour changing the options are many. After selecting the LED, select the driver, either switched, triac, DALI, 1-10v, DMX, 12v or 24v, the choice is yours.

Typical applications are washing light round cornices, coffering, roof light wells, light panelling, beam edges, skirtings and wall recesses. When switched off the edge trim blends into the interior almost unnoticeable.



When on, the room is washed with soft reflected light, the perfect way to illuminate a room and to avoid the error of too many down lights.

Available in 3m lengths for ease of transportation and installation, these trims will transform the way you see light being used to enhance a room giving it added value and exclusivity.

➡ david@ald-edge.com | 07725 560653 | www.ald-edge.com

ALD
Architectural Lighting Details

Alexander Joseph Luxury Cordless Lamps



Custom made luxury cordless lamps for elegant homes.
Commissions most welcome.

www.alexanderjoseph.co.uk
Telephone +44 (0) 1202 863600

EVOLVING CHOICE IN DECORATIVE WIRING ACCESSORIES



Homeowners and commercial property owners are now demanding decorative wiring accessories with modern colours, finishes and technology, to complement their living and workspaces.

David Cleaver, Product Director at BG Electrical outlines how Evolve, BG's new range of decorative wiring accessories will help the contractor keep up with these latest trends and end user demands.

Designed with a slim and screwless profile, Evolve complements any modern interior with a sleek, stylish and minimalist appearance. The range is available with a mix of traditional and contemporary stocked finishes including pearlescent white, brushed steel, matt black, matt grey, dark blue, black chrome, satin brass and copper.

Evolve's polycarbonate front plates are easily removeable and changeable, which gives the flexibility to create on-trend finishes not usually seen in decorative accessories. For larger projects with a minimum order quantity, a wide range of extended finishes are also available, with the ability to custom match almost any colour.

The Evolve range offers a complete portfolio of decorative wiring accessories, suitable for all domestic or commercial applications. The range includes all of the latest innovation and technology solutions BG wiring devices are well known for, including 30W Type C USB fast charging. BG's superior USB solution is the only true fast charging wall socket with integrated fast charge ports, for both USB-C and USB-A. This innovation delivers a 50% charge in just 30 minutes for mobile devices and 60 minutes for tablets, 70% faster than standard 5W charging - charge anxiety is now a thing of the past.

With the move towards home and mobile working, Wi-Fi extenders are also available, allowing Wi-Fi signal to be extended throughout the home and commercial premises. They also extend coverage to outdoor living spaces, without the need for bulky plug-in boosters.



To support the latest LED technology, new touch and push dimmers are also now available and include trailing edge technology. This offers better support for LED lighting, eliminating annoying noise and flicker. Further innovations include soft start and a protective overload function, to extend the life of users LED lamps. Wide rocker switches are also available, which have a large touch point for ease of operation.

Although Evolve is new on the outside, the same trusted and reliable technology found in the Nexus Metal range is employed internally, so contractors can expect the same level of quality and reliability they have been used to.

Designed with the contractor in mind, Evolve includes key features to ensure installation and retro-fitting are as quick and easy as possible, including colour coded, in line terminals and captive screws. In addition, the base of the unit can be installed first, making it ideal for contractors who wish to carry out the preliminary wiring, then apply the covers after decorating.

Evolve offers both the contractor and their customers extensive choice around colours, finishes, modern design and technology, to complement any interior. This evolution in BG's wiring accessories offer goes a long way to help the contractor meet the more modern and aspirational needs of their customers.



For more information on the new Evolve range visit: www.bg-evolve.uk



20 MM MAGPLY BOARDS SPECIFIED FOR FIRE PERFORMANCE IN FLAT ROOF REFURBISHMENT



The total replacement of the flat roof covering on a residential apartment building in North London presents a prime example of why leading waterproofing systems manufacturers are specifying the use of Magply boards as a decking which offers critical fire resistance as well as good load-carrying and weathering capabilities.

The property involved is Block 6 at Tiltman Place in the Finsbury Park district where water ingress through the original felt roof covering had caused the plywood decking to deteriorate badly while, along with other damage, the insulation had become saturated: necessitating total strip back and replacement.

The managing surveyors for the five storey property duly decided to appoint Detailed Waterproofing Ltd. as a well-experienced roof specialist, while the supplier of the roofing system specified the use of high performance Magply boards to provide a sound new decking across the retained metal frame structure.

The build-up features the use of 20mm Magply Al boards, proteus self-adhesive vci, cut to falls insulation, Proteus self-adhesive carrier membrane, then followed by a cold applied Proteus 'Pro-System' waterproofing membrane.

The Contract Manager for Detailed Waterproofing, Jamie Tarry, commented "We hadn't previously used Magply before it was specified to us here as part of the new built-up system on Tiltman Place, but it has proved very easy to handle in terms of cutting and fixing. The job went well and we finished on schedule."

Backed by a number of industry recognised standards Magply provides an ideal alternative to conventional plywood or OSB products. Additionally, the unique production process keeps the chloride content to just 0.01%, enhancing both stability and long-term durability. The different thicknesses of panel are also widely used for flooring and pitched roof installations; as well as being approved by many different manufacturers of render finishes.

► **For further information, please contact:**
Oliver Pirret, Sales & Marketing Manager,
IPP Ltd. Bradwell Hall Bradwell On Sea, Essex CM0 7HX
Tel: 01621 776252 | Email: ollie@magply.co.uk
Web: www.magply.co.uk



A1 NON-COMBUSTIBLE BOARD

TESTED AND CERTIFIED FOR

- ▶ Timber frame construction
- ▶ Spandrel panels
- ▶ Modular build
- ▶ Rainscreen cladding
- ▶ Render carrier board
- ▶ High performance dry lining
- ▶ Tilebacker
- ▶ Passive fire protection
- ▶ Steel frame construction
- ▶ Fire resistant floors and ceilings



HIGH QUALITY, HIGH SECURITY, PERIMETER SECURITY SOLUTIONS

When it comes to perimeter security APS has a range of products from the discrete to the intimidating.

Have you made changes to your business as a result of the pandemic? Reduced your footprint as more staff work from home? Have you conducted a new risk assessment since making those changes?

So, what are you going to do? Lockup and leave? Rely on CCTV to capture images of vandals or intruders after they have caused damage or loss? Or are you going to take a serious look at your security and invest in an Advanced Perimeter System.

When you do consider security make sure you start from the outside in. Perimeter security is the first line of



defence to ensure your property is protected against intruders and vandalism. All of our products offer serious protection, are built to British Standards, and have low power consumption making them an environmentally responsible choice too.

Advanced Perimeter Systems has a reputation as a manufacturer and designer of high quality, high security, perimeter security solutions. We have a range of products available for installation to make any premises more secure from industrial, commercial to domestic property.

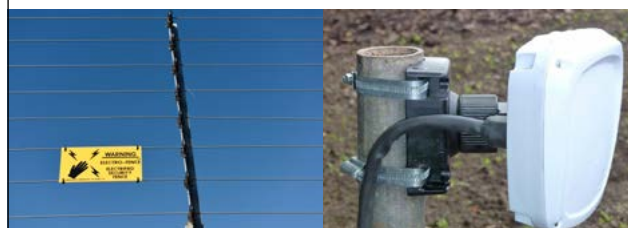
E: enquiries@apsuk.net | **T:** 01786 479862
W: www.advancedperimetersystems.com

APS
ADVANCED PERIMETER SYSTEMS

ONE OF THE WORLD'S LEADING PERIMETER SECURITY MANUFACTURERS

Perimeter security has never been more important whether at home or at work. Advanced Perimeter Systems range of perimeter security systems provide solutions for every security challenge.

Whatever challenges you face securing your property why not contact us to discuss our solution.



Find out more:

www.advancedperimetersystems.com



BLAST RESISTANT LITTER BINS

Traditional litter bins make a terrorist job easy. This is because of fragmentation and the fact that this blast increases the level of injury to passers-by. Energetics Technology's Blast Resistant Litter Bins offer the solution. ETL Bins can be placed into your foyes, walkways, stairways and outside spaces.

Halo80: Independently tested to stringent UK Standards, it has a high charge capability and it's designed to work even when the explosive device detonates near the side or the bottom of the unit.

TC95: 95ltr capacity, Blast disintegrating lid, all round lateral blast fragment mitigation, and bolt down mounting for extra safety.



THREAT MITIGATION UNITS

A Threat Mitigation Unit is a blast protection box, on wheels, which can contain an explosives devise. Such a devise might have been placed in luggage or sent and delivered in a parcel. Anyone is susceptible to easy access from mail delivery, so these units offer a solution. We have various units but here are two of them.

IU1170: Designed to meet the demands of global couriers during cargo screening, it is ideal for any business receiving packages by courier or through the postal system.

IU1105: Provides safeguarding for small suspect packages, letter bombs, fireworks and explosive samples. Typical uses are in mailrooms, banks, embassies and police stations. Sliding internal box for easy loading and removal of suspect packages.



Energetics Technology design, manufacture and sell many blast protection products so call Samantha Bailey (01283 732339) samantha.bailey@energetics-technology.com to discuss your requirements.
www.energeticsblastprotection.co.uk or www.energetics-technology.com



Not all riser doors are fire tested equally. Ensure legal compliance with bi-directional testing



Our renowned 4000 Series riser doors have always been specified by architects for delivering the highest standards in third party fire certification without compromising on architectural design.

Unlike the rest of the industry, we fire test our riser doors from both sides to ensure legal compliance and still achieve 240 minutes certified fire rated performance. Given the choice, why would you specify anything less?





GIRA BRING STYLE AND SUBSTANCE TO A LITTLE BLACK HOUSE

Gira, Made in Germany since 1905

Gira, one of the world's leading full-range suppliers of intelligent building solutions for commercial and residential properties, bring the latest style and substance to a little black house on Lake Ammer in Germany.

With a black charred wooden façade and supersized pivot windows, this little black house makes a big statement in the popular lakeside resort of Lake Ammer, near Munich in Germany. The little house designed by leading architects,



Buero Wagner, defies all the clichés as a bold alternative to generic detached houses, urban sprawl and nondescript buildings and instead, champions individuality and creativity.

Conceived as a new extension, the little black house was cleverly inserted between an office and an apartment block. It is directly connected to the apartment block and deliberately stands out as a separate structure. The wooden framework is charred, making it resistant to both water and fungal attack with no need for chemical treatment.

The black house not only has an impressive appearance but also a carefully considered interior with design elements pared back to basic, essential functions. Its location and the necessary integration inspired the architects to create a nested effect by arranging rooms of different heights inside each other. This also is reflected in the different roof shapes which flow into one another: flat roof connects the black house to the apartment block and a pitched roof.

Minimalist and simple, there are 80 square metres of living space, comprising a kitchen with a living and dining area on the ground floor and a bedroom with a bathroom and



a separate cloakroom in the basement. A special highlight is the living area above the kitchen, which merges into a terrace. Thanks to the two floor-ceiling pivot windows, the north and west facades of the house can be opened almost completely, so that the boundary between inside and outside almost disappears with a view towards the lake.

The interior is restrained in form and material, complementing the basic minimalist concept of the black house. All fixtures such as kitchen cabinets, windows and doors and the staircase are made of natural, oiled oak. Despite the simple furnishings, the rooms have a cosy atmosphere. The concrete ceilings, walls and floors provide thermal energy storage for the built-in panel and underfloor heating. These surfaces were sanded down to make the stone pattern more visible.

With a minimalist interior, a lot of emphasis is placed on the details. For this reason, great importance was attached to the interplay of design and functionality, including the sockets and light switches where the Gira E2 Design Line in Black Matt create elegant highlights upon the walls.

Gira E2 Black Matt finish – this timeless socket and switch series will complement a range of interior styles and will stand up to the rigours of family life. Available in a range of shatter-proof UV-resistant colours to illuminate and automate your home, Gira E2 comes in pure white matt, pure white glossy, aluminium, grey matt (a new addition), anthracite, on-trend colour black matt and high-quality stainless steel. It also works seamlessly with the Gira System 55, which offers over 300 functions to assist intuitive smart home living.

"Conceived as a new extension, the little black house was cleverly inserted between an office and an apartment block."



Everything has been well-considered in this building. It plays with concepts of inside and outside, top and bottom. Overall, the little black house has a purist and open feel due to its shape and the sparing choice of materials. It was nominated for the DAM Prize for Architecture 2020, which recognises outstanding buildings prestigious in Germany.

► **Architecture: Buero Wagner | Zugspitzstrasse 18 | 82211 Herrsching am Ammersee | Germany |**
e info@BUEROWAGNER.eu | web buerowagner.eu

Photos: Florian Holzherr

APC FORKS



Established in 2008, APC Forks has its Head Office in Stockport and works mainly from its central location in Wolverhampton. Filling a problematic void in the market, APC Forks was born out of a growing need for short and long term hiring of the JCB Teletruk. Since its inception, the company has grown its high quality fleet to encompass 140 machines, offering both two wheel and four wheel drive options to cater for the variable site requirements of its wide range of customers. This fleet is constantly growing and most units are less than three years old, ensuring customers are getting high quality equipment every time.

"Our hiring services are highly flexible, so our customers can get the machine without having to commit to a long-term contract," explained Stuart Hunter, Director. Indeed, the JCB Teletruks are hired straight from APC Forks rather than via a finance house, where companies can be locked in a deal for extensive periods of time. With APC Forks' flexible hire service, which ranges from just one week to seven years, customers can use the machine for as long or short amount of time as they need. Indeed, with high levels of uncertainty currently in the marketplace, such flexibility is essential; thanks to APC Forks, a company can react quickly to new business opportunities and if a project does not go ahead, equipment can be returned without any penalties.

The JCB Teletruk is unique in that it combines the functions of a counterbalanced forklift with those of a re-handling shovel, making it the most flexible forklift on the market today. The entirety of APC Forks' fleet has a quick-change front, which makes switching between various attachments quick and easy. These attachments can include forks, sideshifts, buckets, bale clamps, rotators, and many more. Furthermore, JCB Teletruk's all-round visibility is superior to a conventional forklift, making it one of the safest machines available.



APC Forks' fleet of machines feature generic specifications in order to cover a multitude of applications, including solid tyres and extra hydraulics which make them perfect for the vast variety of applications. Indeed, the JCB Teletruk boasts unique features and benefits over any conventional forklift, and APC Forks maintains a flexible approach to try and marry a hire agreement to suit a customer's needs.

"The JCB Teletruk is great for a vast range of applications," explained Stuart. "These include waste management, builders' merchants, grounds maintenance, inner city projects, Crossrail, London underground, and many others."

Looking to the future, APC Forks will be maintaining its high quality and versatile services, regularly enhancing its fleet. "We update our fleet on a regular basis to keep up with the latest product enhancements, ensuring we are offering up to date equipment for our customers. We want to keep growing, and to continue to support infrastructure and industry."

www.hireajcbteletruk.co.uk
www.electriceletrukhire.co.uk

APC Forks

0845 074 3335

www.hireaajcbteletruk.co.uk



HANDLING YOUR FUTURE TODAY

“Your uptime is our priority”



**“Fixed monthly cost,
includes servicing
and maintenance”**

**“Short term flexible
hire agreements
available”**

THE SPARKBROOK COLLECTION
IN OUR MATT BLACK LACQUER FINISH




ARMAC MARTIN

Est.1929 • BIRMINGHAM • ENGLAND

MANUFACTURERS OF
LUXURY CABINET HARDWARE

FIND US ON  

WWW.ARMACMARTIN.CO.UK