

THE ART OF

DESIGN

LUXURY HOME INTERIORS

£4.95 • ISSUE 57



COVET HOUSE X K.A. INTERIOR DESIGN /
MODERN APARTMENT LIVING IN TAIPEI /
EFFICIENT DESIGNS FOR SMALLER SPACES



Bed: Vindö | **Fabric:** Designer 's Guild Glenville Oyster | **Carpet:** Light Beige | **Bed Linen:** Havsbris White | **Bedside table:** Holme

STAY IN BED

The ultimate luxury is taking time to unwind in a bed
so comfortable that you never want to leave



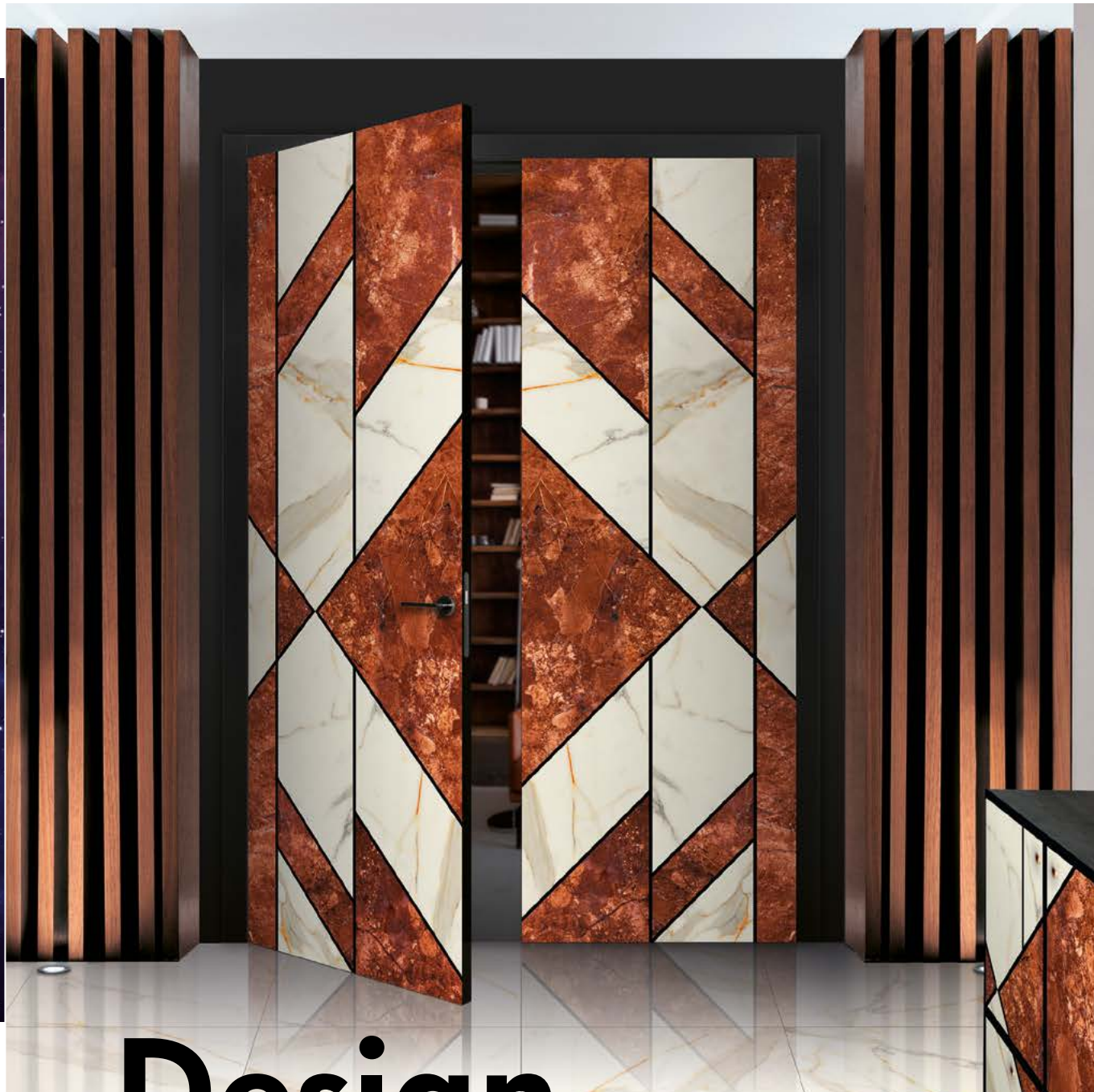
CARPE DIEM BEDS
SWEDISH LUXURY

15 WIGMORE STREET | LONDON W1U 1P | MARYLEBONE@CARPEDIEMBEDS.CO.UK | +44 (0) 20 3982 3252 | CARPEDIEMBEDS.CO.UK
COPENHAGEN GOTHENBURG LONDON SEOUL STOCKHOLM ZURICH AND OTHER FINE LOCATIONS

NEW IN *Harrods* FURNITURE THIRD FLOOR

Infinity

by **vicaima**



Design
to match
and play

Follow us

vicaimainfinity.com

in [Twitter](#) [Facebook](#) [Instagram](#) [Pinterest](#) [YouTube](#)



CONTENTS

6

COVET HOUSE X K.A. INTERIOR DESIGN

A truly magnificent villa, located in one of the most coveted and fast-growing environments in the world, the grandiose Riyadh.

38

RENZO BY DAVAL FURNITURE

Daval Furniture, award-winning British designer and manufacturer of quality fitted furniture was the first choice for leading interior designer Lynsey Ford.

20

THE OPULENT EMPIRE PENTHOUSE

Located in Midtown, Billionaires Row, the Opulent 'Empire' Penthouse has the best views over the iconic Central Park and the entire city.

42

APARTMENT LIVING WITH KING

Without compromising on comfort, functionality or individuality – the latest KING Collection has been designed to marry form and function.

Editor in Chief

Antony Holter
T: 01304 806039
E: editor@mhmagazine.co.uk

Editor

Rebecca Keating
T: 01304 806039
E: rebecca@theartofdesignmagazine.com

Publishing Director

Martin Holmes
T: 01304 806039
E: martin@mhmagazine.co.uk

Sales Director

Rupert Churchman
T: 01227 936977
E: rupert@theartofdesignmagazine.com

Digital Manager

Jamie Bullock
T: 01227 936971
E: jamie@mhmagazine.co.uk

Business Manager

Josh Holmes
T: 01304 806039
E: josh@mhmagazine.co.uk

Studio Designer

Sarah Johnson
E: sarah.johnson@mhmagazine.co.uk

Accounts Department

Alison Holmes
T: 01304 806039
E: accounts@mhmediaglobal.com

MH Media Global Ltd

Office 15, Second Floor, Innovation House,
Discovery Park, Ramsgate Rd,
Sandwich, Kent. CT13 9FD



Cover Image Courtesy of:
COVET HOUSE | www.covethouse.eu



The Art of Design
is proud partners with

A truly magnificent villa, located in one of the most coveted and fast-growing environments in the world, the grandiose Riyadh.



OPULENT MODERN CLASSIC VILLA IN RIYADH **COVET HOUSE X K.A INTERIOR DESIGN**

Another house in a collection of curated houses created by Covet House showcasing various styles and inspirations around the world, this time striking in Saudi Arabia. Set in otherworldly landscapes of the luxurious Riyadh, the villa was designed by Karim Abdul Muttalib, from K. A. Interior Design in partnership with Covet House.

Showcasing 10 different and deluxe rooms, in a modern classic aesthetic where both architecture and decor blend together in perfect harmony, providing a luxury allure, with golden details appealing and homaging the affluent city.





JOIN US IN A PRIVATE TOUR

The opulent villa combines the luxurious and quite recognizable Arabic aesthetic, where the Modern Classic vibe is felt throughout all the rooms. Golden details and artsy pieces define the overall look, and the magnificent architecture of the space complements the decor. Gathering inspiration from the city itself, with the most elegant furniture, lighting, and accessories pieces.

ENTRYWAY

Connected to the dining room, the entrance is the welcoming zone to an open space luxurious experience. Right from the start, the modern classic vibe is present throughout all the elements, where the contemporary artistic decoration clashes with the classical boiserie in the walls. The showstopping Lumiere Round Mirror is sure to make an astonishing first impression of the house.



DINING ROOM

High-ceilings provide this modern classic dining room on a grandiose scale, leaving room for every masterful piece to breathe. A very contemporary feel of the decoration, using mostly monochromatic tones on the finishes and the fabrics, leaving the gold to crack over the aesthetic of the room to ultimately become the epitome of luxury to this project. The massive Fortuna Dining Table is an eye-catching piece for this space, culminating and embodying the same earthly-inspired elements used in the living room, creating a cohesive and deluxe look.





KITCHEN

Modern by design, the kitchen is fully equipped with the latest and state-of-the-art amenities. Classic ornamental lighting and organic shapes of the counter stools create a powerful statement. A small counter for a rush breakfast or a quick meal is the perfect place to start the day.



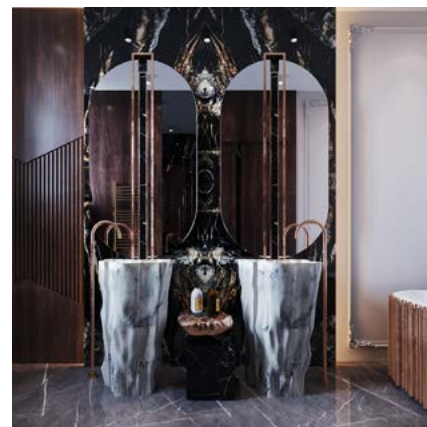
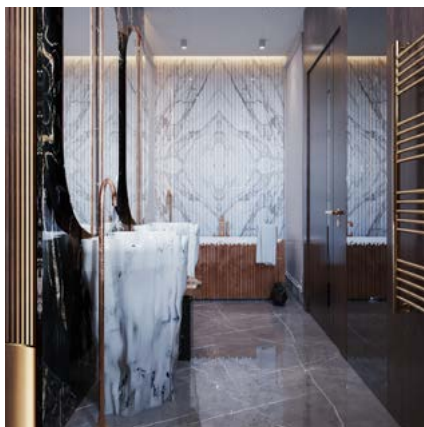
LIVING ROOM

The epitome of the modern classic aesthetic in this opulent project, the colossal living room is comprised of a large open space area that combines both the kitchen, hall, and dining room. With a very clear design, the living room contrasts the softness and richness of the fabrics, with the harshness of the materials and finishes of the furniture pieces. Earthy colors and elements compose the pieces in the living room to contrast with the architecture and modern esthetic of the space.



SERVICE BATHROOM

A smaller space but gigantic in the details, the service bathroom is yet again a mix of textures, shapes, and materials. Using the marble for an intenser feel, this bathroom mirrors the modern classic aesthetic throughout the house in a smaller, quieter tone.



MASTER BEDROOM & WALK-IN CLOSET

Using very sober colors throughout fabrics and textures of the bedroom, leaving jaw-dropping moments for the lighting, details, and the other accessories. A mix of classic touches like the boiserie in walls and the decorative pieces, but a very contemporary feel from the golden details scattered all over the room and the overall architecture of the bedroom.



SITTING ROOM

A small refuge space set inside the massive master bedroom, this space features a built-in tv over the contemporary fireplace. Calm, soothing, and beautifully decorated, this sitting room doubles as a reading corner with the comfortable Isadora Dining Chairs.



GUEST BEDROOM

Although a guest bedroom, this impressive room is not short on detail, richness, or character. With a hint of eclecticism, this room is one of the most complex in features: Classical walls, earthly inspired details, and colors, contemporary furniture, and accessories with a small twist on the mid-century modern lighting pieces. Exquisite, this guest bedroom also features a built-in wardrobe, a sitting room, and a powder area with the mid-century modern Monacles Dressing Table.



OPEN SPACE MASTER BATHROOM

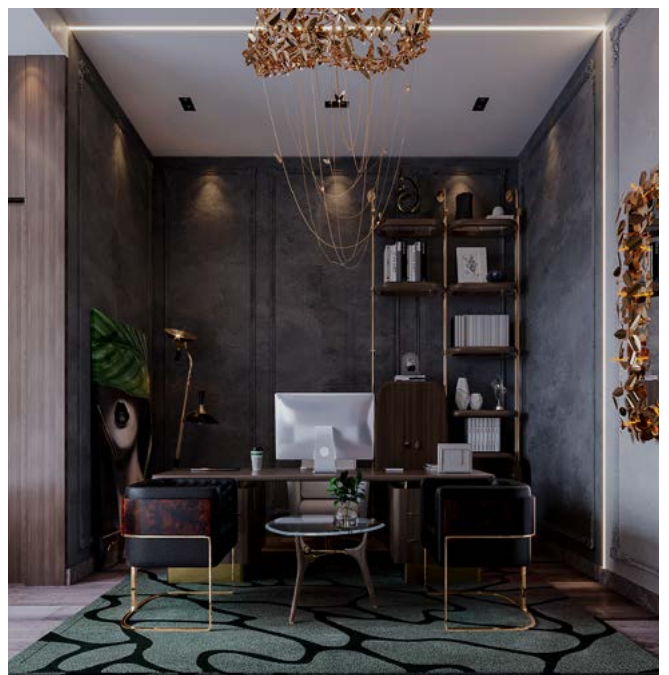
An open space deluxe bathroom, granting an even wider sense of the space, the Diamond bathtub takes the center stage (literally). A true statement piece for a statement project. The lighting pieces offer this space a glamorous and rich aesthetic.





KIDS BEDROOM

Any child with touch skies and the clouds in this dreamy, magical bedroom. Heavily inspired by dreams, where no goal is too far to reach, but still a very exquisite and powerful aesthetic. Cloud bed is the perfect little refuge for a peaceful and calm sleep, where all the other elements will take the talk to another far away and otherworldly adventure.



OFFICE

Following the same esthetic of the other rooms, the office is the area that most earthly elements use in its composition like the woods and textures, creating a wealthy appeal with the gold details without compromising on style or being too overpowering. An expertly decorated room with a clear and visionary view of home office decoration is.

WE CREATE. WE INSPIRE. WE DELIVER
OUR VISION TO THE WORLD.

www.covethouse.eu

Images courtesy of: COVET HOUSE

B Sir William

Bespoke & antique billiards. Chosen by design.



Bentley Billiards



SHAPES AND GAMES **IN HUNGARY**



For this project in Hungary, the end user spends a significant part of his time in a villa with direct water connection on the shores of Lake Balaton, 45 minutes drive from Budapest.

The covered terrace, which can be opened from 3 sides and can be shaded on all surfaces, serves as an exclusive dining and lounge area, where the family spends most of the day to relax and chill.

The protagonist of this special interior is the dual-function Fusiontables dining table, which invites up to 10 family members or invited guests to an exciting game of billiards after a cozy dinner - while admiring the stunning view of Lake Balaton.

Fusion Tables Design Hungary, the exclusive importer of Fusiontables in the country, has installed the unique configuration: the height-adjustable "MetalLine / WhiteMat / Vintage / REVERSO Rock" table with an

EasyLift system built into the legs, the fusion storage cabinet for the clever storage of cues and table tops, the design FUSION chairs and the FUSION bench.

By these lockdown times such a place can become soon a Must to enjoy nice moments with family and friends without leaving the country.

The motto of the Hungarian Fusiontables partner translated into English: "shapes and games", referring to the contemporary and unique design of the Fusiontables dining tables, as well as their versatility.



www.fusiontables.com

LET'S PLAY JAMES

WITH STYLE



Check the other colors and timbers available
www.fusiontables.com



[fusiontables]
by Aramith

KNIGHTSBRIDGE FURNITURE UNVEILS TWO NEW COLLECTIONS **AT DESIGN IN MENTAL HEALTH CONFERENCE AND EXHIBITION**

The Knightsbridge team expertly designed, developed and manufactured two new product ranges, at its factory in Bradford, Yorkshire, following extensive research and planning, to suit the challenging environments market.

The first of the new product ranges, ROK Extreme, has been designed in collaboration with the multi-award winning Interior Designer, Jim Hamilton. Comprising an individual chair, 2-seater and 3-seater unit, ROK Extreme features a plywood weighted back, a reinforced frame construction with no visible staples or gaps, and offers the option of additional weighting - perfect for keeping residents safe and secure in challenging environment settings. ROK Extreme is available in any upholstery fabric or hide, with the correct fire rating for its intended destination.

Knightsbridge and Hamilton have worked in partnership since 2016, on the original ROK Seating Collection, which was recognised as a finalist in the Mixology Product of the Year awards in 2017.

The second range, MORE, was designed in-house by Knightsbridge's Design & Development Manager, Catherine Hawcroft. Practical yet stylish, MORE boasts a Mid-Back, High-Back and Occasional Chair with supportive arms and a deeper seat. Similar to ROK Extreme, MORE also offers a reinforced frame, no visible staples or gaps and additional weighting and is available in any upholstery fabric or hide, with the correct fire rating for its intended destination.

Launched exclusively at the Design in Mental Health Conference and Exhibition, the largest of its kind in the UK, ROK Extreme and MORE are now available to order via Knightsbridge Furniture directly.

Jason Brown, Director of Design & Development, comments "It's been an





absolute pleasure working with both Jim Hamilton and Catherine Hawcroft to develop these brand-new collections. Here at Knightsbridge, we have over 80 years of experience in designing furniture products in the healthcare, care and challenging environments market, alongside hospitality, workplace and interior

design spaces, and we always combine our knowledge and market research to create high quality, UK-made products - perfectly suited for the end user. We're thrilled to have launched these collections at such a well-regarded event in the industry and we're excited to start seeing these products land in projects around the UK soon!"

For further information please visit www.knightsbridge-furniture.co.uk

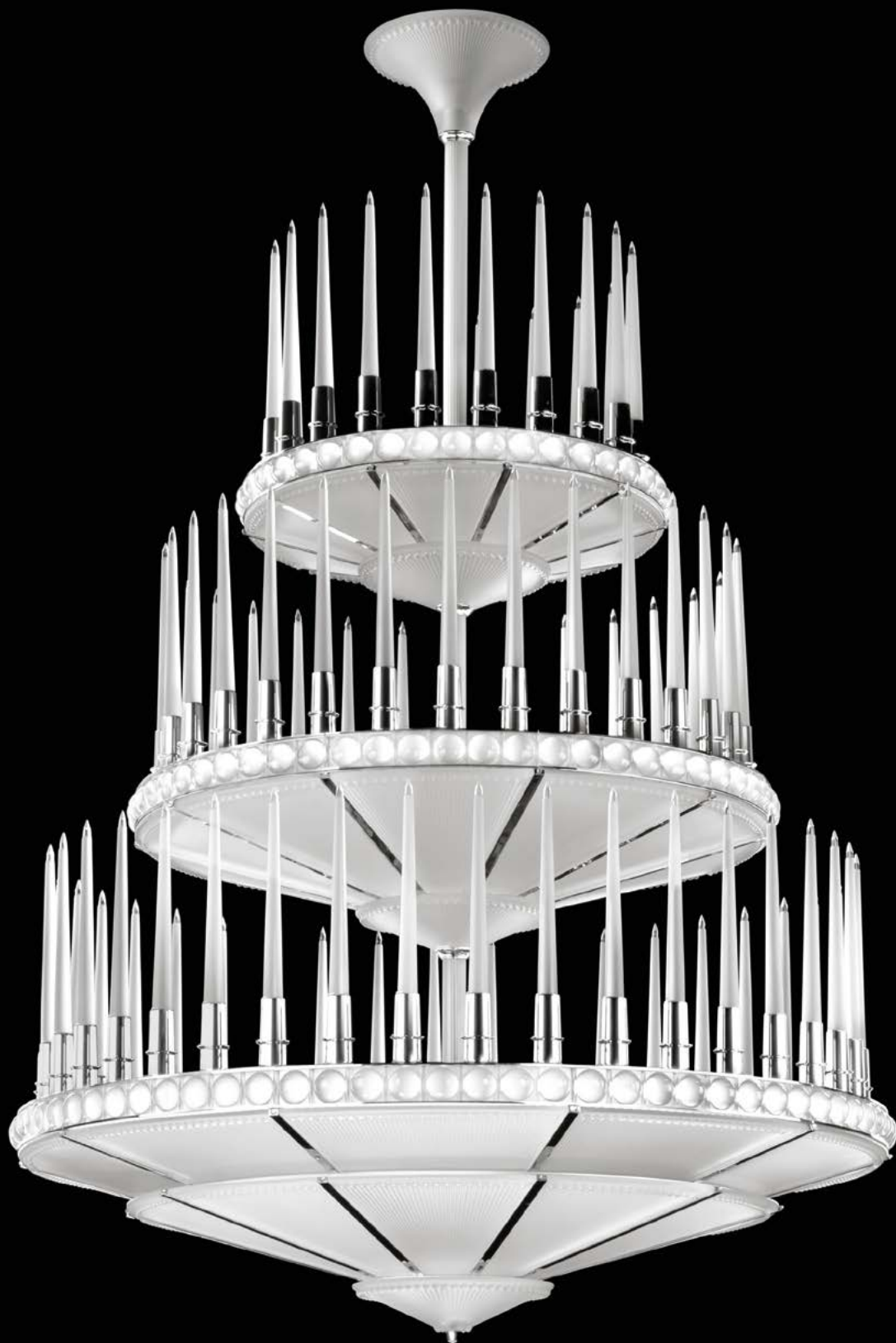


LALIQUE

&

PIERRE-YVES ROCHON

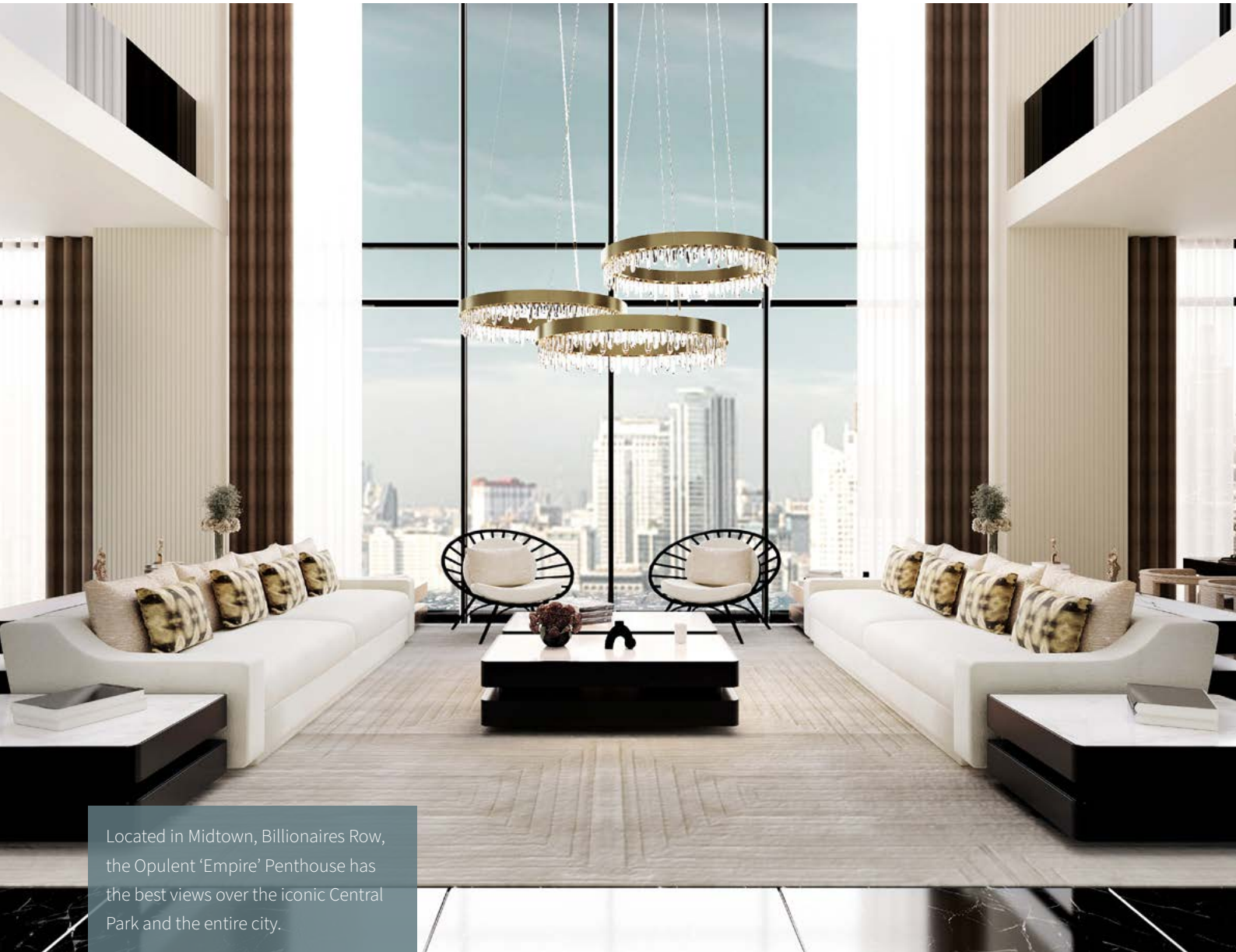
lalique.com



LALIQUE BOUTIQUE
47 Conduit St, Mayfair
London W1S 2YP

+44 20 7292 0444 / shop.london.cs@lalique.fr

THE OPULENT EMPIRE **PENTHOUSE**



Located in Midtown, Billionaires Row, the Opulent 'Empire' Penthouse has the best views over the iconic Central Park and the entire city.

The Opulent 'Empire' Penthouse has two rooms, a bedroom and an office, one full-service bathroom, and one service bathroom. Owned by a high-class businesswoman, this penthouse is filled with light, high-end modern design, and uniquely amazing views. As soon as we enter the penthouse, through one of two private elevators, we are greeted by a world of marble, soft tones and textures, and natural light coming from the open-space, common area. This common area consists of a kitchen, the living room, and dining room, joined at floor level but demarcated

by the height of the ceiling, the kitchen and dining room share the same height while the living room has a double-height, giving dynamism to the space. All around this open space we have the iconic Central Park.

Standing tall over the city, the 'Empire' Penthouse is located in a slim, elegant, and architectural wonder of a building. For a uniquely designed Penthouse, we needed a uniquely designed building, so choosing this one in Midtown, New York, seemed like the right choice, making us feel on the top of the world.

FIFTH AVENUE

13,75m² | 148,00 Sqft

Fifth Avenue is the most famous shopping street often being referred to as Millionaire's Row. Being a high-class woman with expensive taste, the house owner decided that her entryway should feel as expensive and luxurious as this famous avenue. Dripping in luxury, this entryway certainly plays its fundamental role in setting the design tone for the whole house.



Gold, black and white are famous for bringing a touch of class and modernity into a home and this is clearly the case and the perfect example of how to design with these luxurious colors. Mirrors have always played a crucial role in home design for they serve both purpose and design: the KAAMOS Mirror fits the ideal mirror on the wall with a flat mirror and three different materials surrounding it. The BLACK INK Rug brings a modern classic element not only through its design but also through its colors, and the INFINITY Console and GALLIANO Wall Lamp complete this modern luxurious entryway design.

THE DENDUR LIVING ROOM

27,25m² | 592.01 Sqft

Inspired by the remains of an over 2,000-year-old Egyptian Temple in one of the best exhibitions at the Metropolitan Art Museum. The Temple of Dendur was commissioned by the Roman Emperor Ceasar Augustus in dedication to Isis and Osiris as well as two sons of Nubia, Pediese, and Pihor. This opulent, open space living room has all the awe-inspiring elements of this temple. Just like the temple, this living room also protects something sacred: social interactions. Living room design is oftentimes focused on its practicality and functionality, with comfort and elegance being forsaken. This bright living room has all the comfort and functionality of the



SHINTO Centre Tables in either the rectangular or square shape, the latter being used as a side table, showcasing these products' versatility.

THE TOWNHOUSE DINING ROOM

16m² | 172,22 Sqft

A modern townhouse is often one with a small footprint on multiple floors. This dining room maintains the warm pastel and white tones of the rest of the house, hence its name. Having a peaceful dining area can have a significant impact on our mood. Because of the peaceful feelings it transmits, it is beneficial when we want to spend time with family and friends. This ambiance demonstrates how a zen-like environment may be quite relaxing. In order to get the right minimalism style, every dining room design should consider furniture that is captivating and mesmerizing in its most basic form.

Our high-class businesswoman hosts a few business dinners as well as dinners with friends, so this dining room has all the formal and functional elements mixed with comfort and modernity. The SHINTO Rectangular Dining Table alongside the RUKAY Dining Chair provides the comfortable, elegant, and sophisticated elements for long and important dinners.





HELL'S KITCHEN

13,75m² | 148,00 Sqft

Hell's Kitchen, also known as Clinton, is a neighborhood on the West Side of Midtown Manhattan in New York City. This area is known for its extensive and diverse range of multicultural, modest, and reasonably priced restaurants, delicatessens, bodegas, bars, and nightlife. When designing a

kitchen, we need to take into consideration the functionality and practicality without leaving aside comfort and sophistication. This beautiful kitchen's design maintains the same color palette and textures with an island in white marble illuminated by the elegant brass with Quartz diffusers NAICCA Pendant Lights, and the new BOURBON Counter Stool with a swivel base giving a dynamic element to this design.



THE STRAND OFFICE

12,9m² | 138,85 Sqft

The Strand was founded in 1927 on what was then known as 'Book Row' on Fourth Avenue. There were 48 bookstores on Book Row, which spanned over six city blocks. Inspired by this iconic bookshop, this home office is a calm and balanced area where the owner can concentrate and work. Working from home has been one of the most popular trends in the previous ten years.

It is no surprise that designers are paying as much attention to the design of such zones as possible: the atmosphere should be conducive to effective work and creativity, free of distractions. This home office has a calm and harmonious color palette that creates the ideal backdrop for concentration and focus while working. With a floor-to-ceiling window, this highly illuminated space has the comfort of the SIKKA Armchair to be used by the owner, and the BATAK Armchairs to be used by the guests of her business meetings.

HIGH-LINE BEDROOM

13,00m² | 139,93 Sqft



The High Line is one of the city's biggest tourist destinations with a unique mix of artwork, nature, and architecture that justifies its popularity. This bedroom is designed with soft tones and textures with contrasting elements, reflecting the owner's own personality. With a neutral palette backdrop and floor-to-ceiling windows, this modern bedroom design exudes tranquility and harmony, with

relaxing elements which shine the owner's personality. Being a classy businesswoman, we have classical colors showcased on the black headboard, nightstand, and side table, and modern colors provided by the fully upholstered COMO Armchairs and WALES Bench. The AMIK Table Lights with the shaver in light brown and structure in black harmonizing both styles.





PLAZA BATHROOM

8,3m² | 89,34 Sqft

Inspired by the Plaza Hotel, known to be filled with modern amenities complemented by the opulent decor and old-world charm. Here, all that glitters is gold—literally. This mentality was brought to the main bathroom. The bathroom is our place of self-indulgence, private refuge, our relaxation space after a long day. After long days jumping from meeting to meeting, the house owner enjoys taking some time just for herself, claiming her time in her own private retreat. For that, the Symphony Bathtub with its oval shape is the ideal choice.

Its elongated form allows for a long bath in the utmost comfort. The Koi Rug adds another touch of comfort to this beautiful bathroom. Fully illuminated by the Empire Snooker and Empire Wall, this bathroom shines just like gold in its luxurious gold and white decor.

CITY'S ISLAND POWDER ROOM

2,4m² | 25,83 Sqft

The City Island Powder Room is an idyllic paradise to refresh one's soul inside one's home. Designed just for the essentials, this powder room has the Metropolitan Washbasin in black with the Lapiaz Vessel Sink in Gold. The Kilimanjaro Mirror is wide enough so the owner does not smudge herself, with the Ike Pendant providing just enough light to make sure everything is sleek and on point.





 **Posterlounge®**
ART FOR EVERY WALL

High-quality wall art, art prints & frames | Affordable, fast & secure delivery

www.posterlounge.co.uk

Designers, Artists, Storytellers.



Virserius Studio is a multidisciplinary team of designers, artists, and storytellers. We draw from our diverse backgrounds in interior architecture, business, fashion, and the fine arts to create unexpected hospitality experiences that bring joy to guests and deliver exceptional results for our clients.

Arizona Biltmore a Waldorf Astoria resort reimagined by Virserius Studio



Interior Architecture + Design

- Conceptual Design
- Schematic Design
- Design Development
- Branding and Positioning
- Interior Lighting
- Furniture, Finishes and Fixture Selections
- New Construction
- Renovations
- Adaptive Reuse
- Historic Restoration
- Construction Documentation

Project Management + Procurement

- Site Selection Consultation
- Programming
- Budgeting and Value Engineering
- Procurement Management
- Project Installation Coordination
- Construction Documentation

Art Consulting + Installations

- Art Concept + Curation
- Multimedia Installations
- Sculptural Installations
- Product Design

NYC / +1 212 337 2195 / hello@virseriusstudio.com
Paris / +33 6 73 87 63 38 / bonjour@virseriusstudio.com

www.virseriusstudio.com



55 TIMELESS, MODERN APARTMENT LIVING IN TAIPEI, TAIWAN

A TIMELESS design within a new Xin-Yi residential skyscraper is located in the financial district of Taipei, the architecture designed by world renowned architect Richard Meier.

Celia Chu Design were tasked with creating a luxury modern apartment, which could be as open-plan as possible when needed and zoned when not. With 1490 sq ft of internal space Celia designed and installed bespoke full height room divider doors to have separate living spaces when required and completely open plan when not. Three architectural concrete cylindrical columns piercing each and every apartment are embraced and celebrated in Chu's interior design. Celia creates a timeless modern luxury interior for the apartment's owner, a quiet room for his guest (usually his mum) and a grand open plan space for social gatherings and parties, as the owner is a very sociable person. Celia imports her luxury hospitality design experience into a luxury lifestyle iconic high rise city living residence.





With a black hairline tinted metal wall stable door, the kitchen is at the window less end of the open plan living and dining room. An open kitchen serves perfectly as a breakfast bar during the day while at night it is transformed. There is actually a wine shelf hidden within that can be slid open to close up the cooking area. An ambient light from the glass shelf transforms the Calacatta marble Infinity bar into a stylish home bar for movie or party nights.



Not limited for dining use only, to fit in the busy life people have nowadays, a detailed leather seamed-back dining table is showcases adjacent to the kitchen bar which can also be a luxury home office table. An invisible to the natural eye light source shines directly from this modern Vibia horizontal glass pendant providing just enough sparkle and shine together to light the space perfectly.

A rare luxury in a modern apartment is a high ceiling and this apartment is fortunate enough to have 9ft high, floor-to-ceiling windows wrapped from one side of the living room to the other, affording views of the tallest building in Taiwan, Taipei 101, which is just one block away.

A neutral based MORTEX coating has been applied on the wall and pillars to create a unique aesthetic texture to frame the living room. There's nothing more to take away, instead one can fully sink into the large Flexform sofa and enjoy the natural light flooding into this calm space.

A freestanding flue-less spherical fireplace from Vauni Globe can be lit day or night providing a natural focal point in this room and creating ambience.



Bespoke joinery on an external wall was the ideal place to put a media unit with shelving to house the essential television and all the owners' books, ornaments and photographs.

The master bedroom has its own private quarters which can be entered via the full-width and floor-to-ceiling height wall slider

doors, which divide the living room from the bedroom dressing room and bathroom area. Celia used a curved MORTEX finished wall that visually extends the headboard and removes all harsh corners in the room. This creates a unique and serene space that makes you feel cocooned in bed, allowing you to fully focus on the breath-taking view beyond, from your bed.

The full-height windows also carry the visual extension from space to space when both wall panels are fully open. This not only resolved the spatial limitations but also creates flexibility and visual interest as well as a feeling of spaciousness, a true luxury in any city apartment.



A free-standing bath in the corner of the apartment's master bathroom gives a luxury spa experience with views from both exterior and interior. With ambient back-lit lighting from the floating grey marble vanity, it bridges the wet room zone. Having a heated floor throughout the apartment was a challenge to begin with but Celia found that the Mortex coating is heat resistant that can be used for both floors and walls, wet and dry, and it gives a great performance and look. Using just one single finish wrapped up from the floor to the top of the bathroom wall, in the curved shower and water pocket.



Celia successfully enlarged the linear layout and made it into a modern master spa bathroom with stylish bespoke shelving sitting on the counters for display items and toiletries.

Its perfect for the bachelor owner who is thrilled with the end result and looks forward to coming home every night.



www.celiachu.com

Photography: Sebastian Veronese



ENVIRONMENTALLY FRIENDLY CARPET AND RUGS

Based in the Design Centre within the beautiful Chelsea Harbour, Wool Classics is a unique company who are passionate in all things carpet and rugs. Wool is not only part of their name, it's in their DNA. They are a company built on using the most environmentally friendly materials.

Wool Classics have an extensive bespoke design service which will enable you to create a look which is completely unique to you! If you can imagine it, they can weave it. Whether you are an interior designer, or simply looking to re-carpet your home or even sprucing up your classic car interior, Wool Classics is the perfect company to give you the advice and products you need.

Taking you on the ultimate customer journey, Wool Classics will guide you through each step of your design thoroughly. Starting from the design concept, Wool Classics are able to interpret your design inspiration and bring your vision to life. Alternatively, they can produce designs from your brief, creating various options for you to choose from. Once the concept has been agreed, Wool Classics are able to go through a magnitude of colour options which will form the basis of your design. For this, they use colour tufts which will enable you to bring any colour tone you can imagine for your carpet or rug. From there, Wool Classics will produce a sample which will bring your visual design concept to reality. Once you are happy with the final design choice, your desired carpet or rug will then be manufactured to lay the foundation of your interior space.



As a company, Wool Classics always strives to use materials which are biodegradable, renewable and organic. Wool, cotton, bamboo, jute and silk are all materials which are found in Wool Classics carpets and rugs. With this, the company is able to supply products which are both friendly

to the environment, your home and your family. Although Wool Classics prides itself on being green, thankfully all products are available in any colour of your imagination!

For the finest in soft flooring, Wool Classics look forward to welcoming you.

For further details please call **020 7349 1560**
Email **press@woolclassics.com**

Visit our showroom at 205 Design Centre East,
Chelsea Harbour, London SW10 0XF



WOOL CLASSICS

LONDON





IMAGINATIVE AND INTEGRATED INTERIOR DESIGN, **VICAIMA MAKES IT REAL!**

Vicaima, as one of the leading European exponents of contemporary joinery solutions, including interiors doors, doorsets, wall panels and associated furniture products, have just introduced a new brand for professionals called Infinity.

Combining their extensive experience within this sector with the latest technological advancements in image realisation, they present a major step forward for the world of interior design, enabling creative vision to be made real, with imaginative design composition that encompasses multiple elements.

No longer constrained by conventional limitations, Infinity provides scope for interior design professionals to think beyond what they thought was possible, towards what they would ideally like to achieve. Whether creating a theme that



brings rhythm and repetition, or a more dramatic and contrasting vision with pronounced statement pieces, Infinity can make it real.

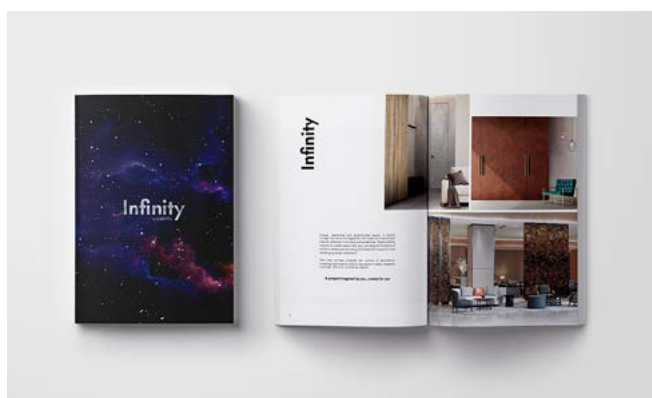
Infinity permits almost endless possibilities when it comes to visual aspect, with choice of colour, tone, pattern and even the perception of texture. This enables interior designers and specifiers complete flexibility

when aiming to deliver bespoke project solutions. However, for those professionals looking for insight from the Vicaima experts in trends and fashions, Infinity's top three collections offer a myriad of fresh inspiration. Select from either wood, stone or metal for an immersive experience which includes among many others, Spalted Maple, Terrazo Amber and Antique Patina.

Once the design and hues have been chosen, it is then a matter of selecting which joinery elements can be combined to reflect the desired theme. Here Infinity broadens horizons and uniquely permits creators to match and play with individual pieces in a way that has traditionally been limited. Blending integral building elements such as interior door assemblies and decorative wall panels, with more ephemeral components like wardrobes and furniture to achieve the perfect balance.

While flexible aesthetic design is the hallmark of Infinity, it should not be forgotten that as a Vicaima brand, superior quality and performance are integral to all elements. Exceeding industry recognised standards and in the case of doors and doorkits, third party fire accredited to both TRADA and the British Woodworking Federation, all products are environmentally produced and FSC certificated.

Infinity marks a new era in design for interiors, whether in public, commercial or residential applications. Expanding, evolving and elevating both the creative process and eventual project realisation by combining visionary image technology with industry leading joinery manufacture, to achieve outstanding results.



Doors

Wardrobes

Wall panels

Furniture Pieces

Infinity

by **vicaima**

For more information or to request a brochure visit
www.vicaimainfinity.com



COUSINS *Summer* SALE

Make this Summer one to celebrate...

Living | Dining | Sleeping | Flooring

Birmingham | Dudley | Newcastle-Under-Lyme | Shrewsbury

cousinsfurniture.co.uk

Visit Cousins' Summer Sale, you will not be disappointed!

Visit us in-store or online to experience our latest inspirational collections. Whether your taste is contemporary, traditional, modern, or classical, Cousins Furniture has a style for every home.



Pay nothing for a year.
No deposit.
Interest Free



Furnish every room of your home all under one roof.

The choice is enormous and all of our collections are beautifully displayed in truly inspirational room settings. Everything has been reduced, including all leading brands. If you're in a hurry to refresh the look of your home, Cousins Furniture has many quality items in stock and available for quick delivery. As the Midlands' leading family-owned furniture retailer we champion local suppliers, and showcase our own Bespoke sofa and bed services. Our friendly and experienced sales staff will be on hand to give you all of the advice you need. Why not visit us in store and experience it for yourself. Come early to take advantage of our Extra Discounts off all Summer Sale prices for the start of the sale only.

RENZO BY DAVAL FURNISHES LYNSEY FORD DESIGN IN WEST YORKSHIRE



Daval Furniture, award-winning British designer and manufacturer of quality fitted furniture was the first choice for leading interior designer Lynsey Ford, Founder & Owner of Lynsey Ford Design.

Tasked with enhancing Lynsey's home-studio with its 100% recycled Renzo Furniture, Daval created a custom hideaway kitchen with ample storage to optimise and support the creative process. Designed to harness her style of consultative, high focus work, and introduce the restorative qualities of wood in the workplace, Renzo introduces the subtleties of nature without impact to the environment.

Lynsey Ford of Lynsey Ford Design says, "I try to minimise my consumption, looking to reuse and fix where possible, and so when making purchases I try to buy for longevity. The longer a product lasts, the smaller its environmental impact will be, which is why I turned to Daval for my own project – a new Renzo furniture scheme for my interior design studio for Lynsey Ford Design. I selected Renzo in the Charred

Japanese Wood finish as it allowed me to introduce sustainable design alongside the rich, textured look I wanted to achieve. The design features a clever hidden kitchen with instant boiling water tap and reeded glass storage cupboards. It sits behind two floor-to-ceiling doors and is great when I have client meetings and need a facility to make drinks or prepare some snacks without returning to the main house."

Lynsey's home-studio with new custom built-in kitchen offers a beautiful take of the grey colour palette, which is brought to life by the rich Renzo furniture, natural stone flooring and mid-century modern steel framed doors on entry. To emphasise the vertical lines, Daval chose to include a series of floor-to-ceiling storage cupboards, which enhance the interior elevations of the space by naturally drawing the eye upwards. By design, Daval has created a designated storage wall that cleverly conceals the bijoux kitchen so that Lynsey, can concentrate on design generation and client consultation with every necessity to hand.

Simon Bodsworth, Managing Director at Daval Furniture says, "We are delighted to collaborate with Lynsey once again following the successful installation for a luxury family suite at the boutique hotel Another Place on Ullswater. As the 2021 winner of BBC Two's Interior Design Masters, Lynsey is renowned for bringing her fresh, contemporary style to a project with a focus on sustainability and so our award-winning Renzo furniture was a natural choice. As it is made from 100% per cent recycled materials, it meets her high standards for sustainable solutions. Lynsey is based in the next village from our factory, and it was a privilege to be invited into her home studio and assist in creating a flexible workplace to enhance her flourishing business."



James Bodsworth, Design Director at Daval Furniture says, "We are seeing new levels of creativity following the rise in home-office lifestyles and this has placed new emphasis on hybrid interior design, which is functional yet informal. Fitted furniture is key to supporting a custom home environment like Lynsey's home-studio, able to create a relaxed yet professional environment that is not out of place in a residential environment."

I believe that custom fitted furniture not only serves a practical purpose, but it also enhances the look and feel of the room by complementing a range of colours, materials finishes and textures. As the trend for having a flexible home/work life continues into 2022-3, having the ability to facilitate unique, high spec projects is going to become an integral part of the consumer wish-list moving forwards."





Lynsey adds, "I am very excited about my new home-studio with custom Daval furniture, as I believe we should make every corner of our homes special. We spend so much time in them and it's proven to have

such an impact on our mood. Your home is your haven and sanctuary, personal to you and your family and I believe should be decorated in a way that makes you happy, not to try and be fashionable. I'm keen to

keep growing my business alongside caring for my young family. Now that my new studio is up and running, it feels lovely to keep home and work separate, if only 25 metres away."



For further information, please contact: Daval Furniture - t **01484 848 500**
e **enquiries@daval-furniture.co.uk** | w **www.daval-furniture.co.uk**
Instagram: **@daval-furniture** | Twitter: **@Daval_Furniture**

Daval House, Spa Fields Industrial Estate, New St, Slaithwaite, Huddersfield,
West Yorkshire HD7 5BB

Fantasy living

Whatever your design ideas, you'll find inspiration to complement and elevate them in the dp-fantasy collection from Decorative Panels Lamination.

A range of finishes that nature cannot provide, fantasy represents the best in material technology from the printing industry with levels of design realism like never before.



Finish shown: Marble Rocks



Contact us for more information.

Century House, Premier Way, Lowfields
Business Park, Elland, West Yorkshire, HX5 9HF

T: +44 (0) 1484 658341

E: info@decorativepanels.co.uk

www.decorativepanels.co.uk

Apartment living is on the rise more than ever before and skylines of UK cities are in a continuous state of flux with ever-burgeoning residential developments.



APARTMENT LIVING WITH KING A COLLECTION OF EFFICIENT DESIGNS CREATED TO ADAPT TO SMALLER SPACES



Without compromising on comfort, functionality or individuality – the latest KING Collection has been designed to marry form and function to help create the most efficient set-up, and build an apartment scheme as hard-working as it is sophisticated. From modular sofa designs, to multi-purpose storage and space-defining accessories - each item is available to view online and in-store now in KING's Tottenham Court Road showroom.

British Australian interiors expert and the KING Brand Ambassador, Neale Whitaker, shares his expert advice on designing the perfect apartment scheme:

DON'T GO SMALL

“A frequent mistake observed by designers is believing small-space living requires scaling down furniture, however using smaller pieces throughout the apartment will highlight the modest scale and even make it appear smaller – the doll house effect in action. It is far better to opt for fewer larger, multi-functional pieces to create the impression of size and design a space that balances use with scale.”

with an added element of storage by introducing floor-to-ceiling shelving which both separates a room into and ensures a clutter-free interiors - in itself enlarging the feeling of a room”.

A WORD ON COLOUR

“In an apartment (or any open-plan space where living zones are in close proximity) use a palette that feels related but not repetitive. Select a base of neutrals to which you can add layers of colour, pattern or contrasting neutrals. For example, sage green, forest green and a green stripe or pattern. Or the equivalent in blues, yellows, reds or browns. If there is just one colour or shade that links the different zones in your apartment, it will create continuity and visual harmony.”

ZONING IS KEY

“With many apartments lacking distinct rooms following the rise of open-plan design, furniture and accessory selection is paramount to creating the zones needed. Rugs are an impactful way to zone living spaces. Alternatively create a room divider





Cast Frost 1800mm x 800mm Porcelain Floor Tiles

DEERBANK - ESSEX

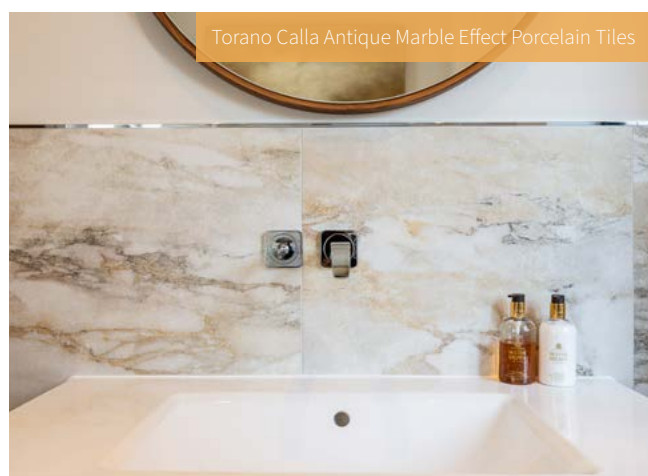
TILES AND WOOD FLOORING BY EDEN CLAY



Cast Frost 1800mm x 800mm Porcelain Floor Tiles

Beginning in the entrance hallway you are met by a grand T shaped Solid Oak staircase that leads up to the first and second floors. The hallways hand finished Virley Oak flooring runs straight into the adjoining dining room and office, where you will find handmade and finished Versailles panels, which have been set out to mirror the ceilings lighting recesses to create a "matt" effect. This is a great example of the attention to detail you find throughout this property.

A staircase at the back of the hallway leads down to the basement which houses the Gym, Sauna and Cinema, complete with bespoke home bar, furnished with Eden Clays Melfort Black Brown Wood effect tile range.



Torano Calla Antique Marble Effect Porcelain Tiles

Virley Oak Flooring and matching Versailles Panels



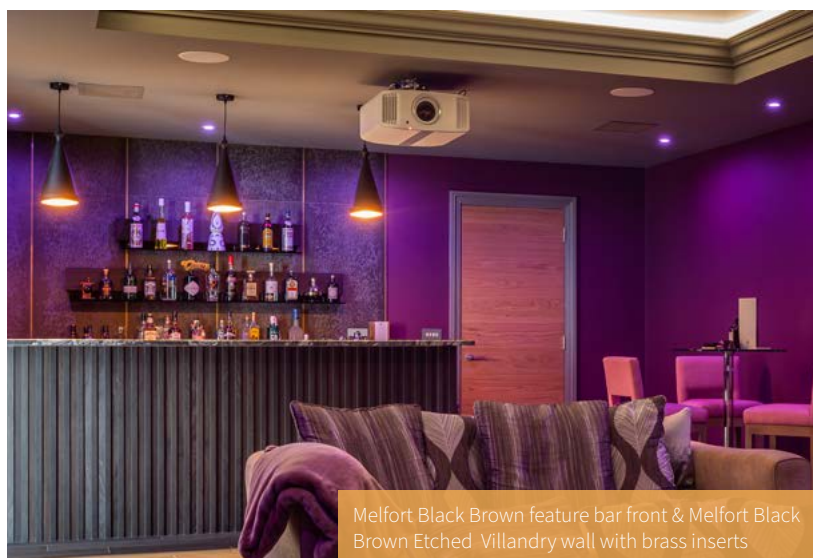
EDEN CLAY

Wood Flooring
and Tiles

01277 624966
info@edenclay.co.uk
www.edenclay.co.uk

The heart of this home is the large Kitchen Family Room, which houses a well proportioned island with breakfast bar, a sumptuous corner sofa seating area complete with a movie lovers 8K TV, and large dining area overlooking the landscaped garden and swimming pool. Eden Clays Cast Frost floor tiles create just the right backdrop to allow the the furnishings to take centre stage.

The Master Bathroom features a shower wall furnished with Eden Clays striking book matched Arabescato polished Marble effect porcelain tiles. The floor is laid in the complimenting Warley Marble effect polished porcelain tiles with matching mosaic border.



Melfort Black Brown feature bar front & Melfort Black Brown Etched Villandry wall with brass inserts



Arabescato Marble Effect Polished Book Matched feature wall & Warley Marble Effect Polished floor tiles with matching mosaic border

The award winning Eden Clay are known for the quality of their products, but its their ability to expertly install their wood flooring and tiles, as demonstrated here in this multi faceted project, that is getting them noticed by architects, interior designers and developers alike.

The client for this project just happened to be the owner of a high end independent house building company, so their own home was always going to be well thought out and beautifully specified.

For further details on this project or to discuss your wood flooring and tile needs, contact Eden Clays sales team on **01277 624966**.

EMBRACING THE GREAT OUTDOORS

2021 has become synonymous with time spent at home, and consequently more time outdoors. We aren't complaining! What always seemed like a European culture has finally crossed the pond to the English garden aesthetic. Here at Coach House, we are very much embracing this newfound love of the great outdoors.

It's now not so much about bringing the outside in, or inside out, but a seamless transition that works best. Creating more of a natural flow between the two. This will not only increase space but help give a mental boost. Nature is a medicine for the mind, and its calming balm has never been more craved.

A few ways to create this more seamless transition we find are textiles, accessories, and of course plants. In terms of textiles, it's cushions and throws galore! We now have a new range of outdoor cushions and even some outdoor recycled rugs which really help to add a softness and comfort to your outdoor spaces, especially in the early evening. Even bringing non 'outdoor' items out can really feel cathartic; items like vases and trays give a more 'homely' feel to your garden. Then naturally there are indoor plants, to create a sanctuary indoors, this has just been going from strength to strength for the last few years. Our faux

plants sales have grown phenomenally over the past 18 months.

For those too, who are still undecided about the world opening back up, the garden can be a true refuge. It can be a space for you, or to share but with a more select few. Alfresco dining is definitely a culture that I hope is here to stay, there is nothing more lovely than sharing home cooked food with friends in the great outdoors. Some of my favourite memories have been evenings outside spent like this. Hosting outdoors I find is often easier and more relaxing, the food can



be less formal, as with the tablescaping. Simple vases of loose floral, jugs of summer drinks and big bowls of salad, and lit candles are easy on the eye.

As summer holiday plans are on hold for now, we hope that you can turn your outdoor spaces into dreamy, inspired oases and enjoy the beauty of Britain.

www.coachhouse.com

COACH HOUSE

www.coachhouse.com / [@coachhouseuk](https://www.instagram.com/coachhouseuk)



PALAZZETTI

THE ECOFIRE® VIVIENNE PELLET STOVE

WINS THE GREEN GOOD DESIGN® AWARD 2022

For the second year running, Palazzetti has stepped on the podium of the Green GOOD DESIGN® Award, an international prize dedicated to the most virtuous expressions of sustainable design.



“Build A Better World Now” was the slogan of this event that awarded projects, products and technologies distinguished by an advanced green approach boasting a minimal impact on the environment.

Out of hundreds of products from over 30 countries, the jury selected Vivienne – a sealed pellet stove from the Ecofire® range by Palazzetti - that is a perfect fusion of efficiency, savings and convenience.

“We are proud of this second achievement that rewards us for the efforts invested in sustainable design” comments Chiara Palazzetti, Marketing and Communications Manager. “Vivienne is fitted with our

innovative T3 firebox featuring a total combustion burn pot and an automatic cleaning system. Thanks to this important technology - that guarantees greater efficiency and minimal emissions - Vivienne is optimised in favour of a healthier and cleaner environment.”

A birth child of the collaboration between the MarcArch design studio and Palazzetti's technical department, Vivienne features a perfectly circular design and a spectacular view of the fire. Moreover, in the version with a top, coaxial flue gas outlet (Vivienne US), the combustion air is already heated when it reaches the combustion chamber and cold air is prevented from

entering the room. This technology increases the ecological value of the stove while optimising outputs and reducing consumptions.

Ecofire® Vivienne's efficiency and its high technological content stem from Palazzetti's ongoing research into developing solutions aimed at achieving a more comfortable indoor climate while protecting resources: a commitment that has, once again, been rewarded by this prestigious prize.

www.palazzetti.it



LUXURY MEDIA WALL ELECTRIC FIRES

FOREST LOG OR SILVER BIRCH FUEL BEDS



BUILT IN FIRES ● STOVE ● TUNNEL ● INSET ● SUITES

INFO@SOLUTIONFIRES.CO.UK

01462 813138

📱 @SOLUTIONFIRES 📺

WWW.SOLUTIONFIRES.CO.UK

solution
fires

EXCELLENCE IN ELECTRIC

MORGAN ELLIS **LIFTS**

As one of the UK's leading home lift experts, we are thrilled to offer a unique range of home lifts to our customers right here in the UK and beyond.

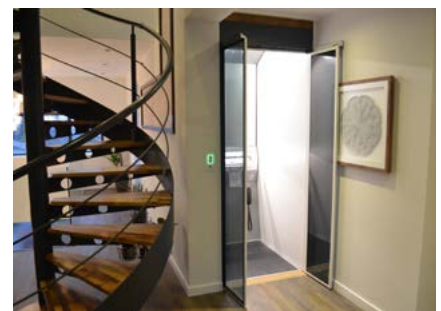


Here at Morgan Ellis, we pride ourselves on our experience, quality, knowledge, and execution - our founders and staff are fully versed in all of the models and ranges we work with. High-end luxury home lifts are what we do here, day in and day out and we are passionate about providing stylish, luxurious accessibility solutions so you can elevate your lifestyle and future-proof your home.

Working closely with the brands and manufacturers we supply, we are in a unique position to offer more than just the factory specifications - many of the lifts we offer here at Morgan Ellis can be customised to suit your needs and preferences, from the metallic finishes to the colours of the carpets and in many cases, even the size

of the lift itself. With exclusive access to some of the biggest names in the industry, we offer the luxury of being able to explore a huge range of sizes, designs and more. We're a one-stop lift supplier, providing everything from a range of lifts to choose from, to the design, manufacturing, and installation.

Whether you need your lift to be small and discreet or to be a WOW feature and completely bespoke to you and your home, we have every lift type and budget covered throughout our range. We are open and honest about our range, offering advice and options that will suit you and your needs best. We'll never direct you to a lift that won't work for you, offering complete transparency with the benefits and features



of every one of our lifts. We aim to ensure you are completely informed when making the decision on which is the right lift for you.

We do bespoke lifts, rectangular, circular, square, and more - you name it, we supply it.

Get in touch with our experts - we can guide you throughout the whole process and into the lift of your dreams.



MORGAN ELLIS LIFTS – SHOWROOM

A visit to our showroom is the best way to experience the quality, expertise, and style on offer here at Morgan Ellis.

The first showroom in the UK to feature all three lifts: PVE 37, Aritco Home Lift and Altura Platinum.

Situated in Amersham's Sky House Design Centre, our brand-new showroom is now available for visits so you can chat to our team and experience our home lifts first hand. Our friendly team will be on hand to offer in-depth, expert advice about not only the PVE elevator, but all of our home lifts, so you can order yours with extra peace of mind.

To book an appointment to find out more, please contact us on the details below.

HOME LIFT AFTERCARE

Home Lift Aftercare are a team of approved and qualified home lift maintenance specialists. We have experience servicing and repairing Artico, Stiltz, PVE, Altura and Thyssen Krupp home lifts. You get peace of mind with our quality service.

When warranties expire, there's no need to worry. Our competitively priced breakdown and maintenance plans ensure you and your lift are covered. Contact us today to discuss your needs.

Each lift installation and design are unique; therefore we can tailor the right service plan for you!

Standard Maintenance

To ensure your freedom at home, all home lifts require regular maintenance.

Whether you've opted for an Artico platform lift or a space-saving PVE pneumatic elevator, our team can ensure it reliably lifts your quality of life at home for years to come.

Enhanced Maintenance

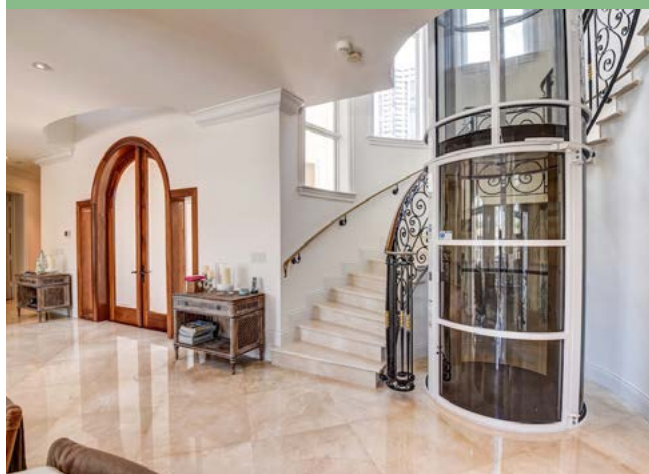
Give yourself peace of mind and rest easy with our competitive prices and breakdown contracts.

Our 24-7 dedicated service line means our team of professionals are only a call away.

enquiries@homeliftaftercare.co.uk
0203 150 4417

**HOME LIFT
AFTERCARE**
"KEEPING LIFE ELEVATED"

BY
**MORGAN
ELLIS**
LIFTS



enquiries@morganellis.co.uk | 01702 780002
Sky House Design Centre, Sky House, Raans Road, Amersham HP6 6FT



Specialising in high-end residential and hospitality in interior design, LuxDeco Studio's international, multidisciplinary team combines decades of experience to provide the most professional, enjoyable and efficient design experience.



LUXDECO STUDIO - KNIGHTSBRIDGE TOWNHOUSE

A beautiful Grade II listed home situated on a private road, the Knightsbridge Townhouse project bears all the beauty of a quintessential London townhouse. Every existing element of the home, from its classic Georgian facade, intricate corning, tasteful wall panelling and floor-to-ceiling sash doors had to be meticulously considered, and in some cases, delicately restored.

The extraordinary interiors called for bespoke cabinetry to retain the grandeur of the space, whilst making it practical and functional for the client.

"The Georgians had a way of achieving an immense level of elegance in design that feels effortless", LuxDeco Interiors Director, Linda Holmes explains of the home she and

her team were commissioned to design. "This property had an abundance of natural light that poured through the sash windows and beautifully classic proportions, which, when combined, resulted in the most serene canvas".

LuxDeco Design Studio was responsible for designing and coordinating the full refurbishment, including all furniture, fixtures and equipment, custom joinery, commissioning of contractors and project management.

To transform the space whilst still maintaining character, high-gloss luxury woods and silken textures were blended with modern bronze metals, refined drapery and handsome custom cabinetry with

statement crystal lighting. The resulting design - a transitional masterclass of subtly layered, luxurious and timeless aesthetics, is nothing short of perfectly befitting such a stately home.

"The client envisioned a home which was masculine but not overly heavy, and refined but comfortable enough to entertain guests," Linda recalls. "We balanced dark gloss woods with lighter textiles and tailored silhouettes with softer accessories to make the home feel both considered and welcoming. It's a classic London aesthetic which works so well in such an esteemed property."

www.studio.luxdeco.com

Invite the exceptional
into your life



ABODE NEW KITE BATHROOM COLLECTION WITH DIAMOND-STYLE EMBOSSING

Taking refined glamour to the next level with a subtle mix of past and present, the new Kite Bathroom Collection brought to you exclusively by Abode, is characterized by its slender proportions, and fusion-style aesthetic that suits both a contemporary and traditional décor.

Handcrafted in Italy, Kite is inspired by the classic elegance and enduring qualities of the Chesterfield sofa made popular in the Victorian era. The diamond-style embossed handles feature upon each product within the collection to provide a welcome contrast against crisp white sanitaryware that is beautiful and visually tactile.

Paul Illingworth, Design Manager at Abode says, "Offering a sophisticated timeless appeal, Kite introduces a signature style across essential bathroom components, where pattern and texture are king. We believe that our new Kite range provides a compelling way to add-value to turnkey bathroom projects and given the rise for original product innovations that are exclusive by design, Kite is well placed to fit-out any type of bathroom space with a complete range of basin, bath and shower brassware."



The new Kite Bathroom Collection by Abode includes: prices include vat

- Kite Basin Mixer – H193mm, £299 Chrome AB2741 | £399 Antique Brass AB2744
- Kite Tall Basin Mixer – H333mm, £399 Chrome AB2742 | £575 Antique Brass AB2745
- Kite Deck-mounted Bath Panel Valves (2) – H56mm, £399 Chrome AB2743 | £575 Antique Brass AB2746
- Kite Concealed Thermostatic Shower Valve (2 Exit) – H234 x W155mm, £849 Chrome AB4572 | £1,199 Antique Brass AB4573

- Plus, complementary shower heads & arms, bath & basin clicker wastes and overflows available

Leanne Adamson, Marketing Manager at Abode adds, "The days of a 'one size, fits all' bathroom is a thing of the past and we are noting a growing desire for more specialist product designs, which add an extra layer of luxury and convenience. As the bathroom remains the one room in the home where privacy is still considered precious, it has become somewhat of an escape for many of us in recent months by providing a private sanctuary to relax and unwind. However, mastering the art of restraint is essential in the bathroom as you are typically working with a lesser footprint, and so opting for highly decorative brassware that is naturally attention-seeking is a great way to introduce 'decoration' without overwhelming the space."



For further information, please contact Abode: t **01226 283 434**
e **info@abodedesigns.co.uk** | w **www.abodedesigns.co.uk**

For the latest news & company updates, please follow Abode on Pinterest, Facebook, Twitter and LinkedIn **#WaterTheWayYouWantIt**

HEALEY & LORD

CLASSIC COLLECTION



MODERN COLLECTION



Classic & contemporary designer sanitaryware & accessories
Made in the UK and Western Europe
All products are available from stock

www.healeyandlord.co.uk

Tel: 01603 488709 | E-mail: sales@healeyandlord.co.uk

EXCESSORIES – NIGHT COLLECTION

STORE, HANG, PROTECT, CONTAIN, PULL OUT



The drawers, with soft shapes and high design, and the illuminated shelves transform the walk-in wardrobe into an inspirational space and make it the most appreciated and coveted place in the home.

The materials of the collection, from fabrics to leather and imitation leather, breathe life to endless combinations.

Excessories is also the winner of the Interzum Award: Intelligent Material & Design 2019, a competition organized by Koelnmesse in cooperation with Red Dot. This prestigious award is given to products that best represent technological innovation combined with functionality and design. The judging panel has conferred on Excessories the highest recognition as “Best of the Best” in the category “Fittings, glass and lighting”.



Salice opens a new world of elegance and refinement, enriching its existing wide products range with the launch of Excessories, its first collection of accessories with the highest aesthetic-functional qualities.

An infinite variety of solutions designed to optimise space and to facilitate the perfect arrangement of wardrobe interior fittings, offering infinite possibilities of exquisite style and convenience.

Excessories - Night Collection allows wardrobes and walk-in wardrobes of all styles to accommodate elegant hangers, scarves and tie hangers, bag hangers, cotton garment holder bags, trouser hangers and shoe racks, all elements of singular refinement and efficiency.



www.salice.com

eXcessories

NIGHT COLLECTION



SALICE
www.salice.com

CREATORS OF **CARPET ART**

Zollanvari International carpets embody the spirit of Persian carpet design and weaving treasured across the world for more than 2,000 years.



This profound understanding of the splendour and profusion of the Persian weaving aesthetic informs our carpet production, making it unique and timeless – qualities that have established the Zollanvari name as a global trailblazer in creating carpet art. Our passion has always been for the artistic weavings of the nomadic people of southern Persia, where almost all our collections are woven.

With its exquisite patterns and the finesse of its quality, a Zollanvari carpet captivates and enhances the beauty of its surroundings. The vibrant colours and timeless designs we create combine perfectly with contemporary as well as traditional interiors. When thoughtfully placed, our carpets import a sense of space, vision and form to any setting. Zollanvari's

commitment to the creation of superior quality carpets and exclusive designs, at the same time as the preservation of the immense Persian heritage of carpet art, not only has established the brand in the global marketplace as a leader but has inspired us to push the boundaries of carpet design and weaving techniques – from the minimalist development of our tribal Gabbeh to the innovative reinvention of classical patterns seen in our Isfahan Collection. As a result, we have won numerous worldwide accolades for the quality and individuality of our carpets.

Our designer collections have been created in collaboration with distinguished studios in Milan (SoFar SoNear), Vienna (NOV24), Cyprus (Soheila Shayegan) and our design studio in Shiraz. We have found inspiration

not only in the Persian carpet heritage but in weaving traditions across the globe – from Pre-Columbian textile art and 'feather work' to Japanese meisen kimonos. We offer most of our designs in custom sizes and colours as well as a bespoke service for designers who wish to produce their own creations for specific projects.

For us, the art of carpet making has always exemplified the expression of a culture – a way of life. Our use of pattern, colour and symbolism have thus been constantly evolving. What sets us apart is the active encouragement we give our weavers to allow their own aesthetic sense to shine through the designs. Individual, expressive and unique luxurious carpets are the result.



WWW.ZOLLANVARI.COM
Creators of Carpet Art



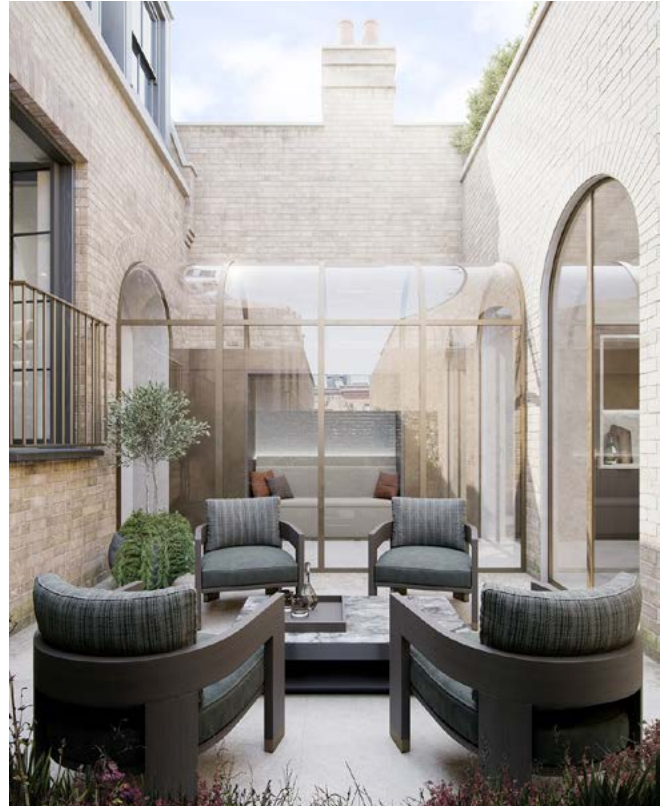


SHH WINS INSTRUCTION TO RESTORE GRADE II LISTED **HISTORIC HOME** IN **BELGRAVIA**

Award winning architecture and interior design studio SHH has been instructed to restore a historic Grade II Listed residential building on Cadogan Place, within the Hans Town Conservation Area in Kensington.

SHH's proposal is twofold comprising the preservation of the historic value of the main dwelling and the reconstruction of the existing mews house (which was added later and dates from the early 2000's) located at the rear of the site.





The proposed elevation of the mews house draws inspiration from the site's immediate surroundings and will remain in keeping with the typology of the conservation area. The proposal seeks to unite the streetscape by introducing a mansard roof to restore the roof line along the mews and to revamp the façade in fair-faced stock brick which is typical of the area.





The two volumes (main house and mews) are currently linked via a steep staircase at basement level, offering no visual connection between the two buildings and making access challenging for users. SHH's design solution aims at creating a seamless flow between the main residence and the mews from a new glass link at ground level. This glass link draws inspiration from Georgian/Victorian glasshouses and will run along the existing ground floor terrace to form a modern orangery. The team have proposed a combination of glass and bronze framing for a seamless transition between the two volumes and greater connections with the outdoors.



Guy Matheson, Director of Architecture at SHH says, "Our intention is to reinforce the contrast between the historic and modern side of the property and to allow users to feel as if they are transitioning between two distinct spaces. By connecting the spaces with glass, one is able to read the elevation of both the mews and the main dwelling house through the orangery."





SHH is taking careful consideration to develop all aspects of the design to minimise impacts to the historic fabric. The majority of the proposed internal alterations are minor in nature and will largely preserve the historic floorplan and surviving historic features of the Grade II Listed Building. Previous works on site have not been sensitive to the heritage asset, SHH's proposals represent an opportunity to restore the building whilst bringing new life to it, to suit the needs of a modern family.

@SHHArchitects
www.shh.co.uk



ONLY THE FINEST DESIGNS FOR CHRISTOPHER HYDE COLLECTIONS

Having excelled at manufacturing luxury luminaires for an extensive range of interiors for more than 25 years, Christopher Hyde Lighting is excited to showcase some of the finest designs within the prestigious classic and contemporary collections.

The St James chandelier, a stunning 20-light oval centre piece with a crystal cut vase in the centre. Finished in antique french gold with clear bohemian crystal drops. A luxury reception or living area would be the perfect space for a chandelier of such grandeur.

The Houston Collection which consists of a spiral chandelier, 5 light pendant and wall light, might have a more minimalist design but the fittings within this contemporary collection are nothing short of spectacular. The multi-level spiral shaped chandelier with six shades extends significantly from the ceiling, whilst the 5 light pendant has an expansive diameter with a shorter drop, ideal for lower ceilings.

Manufactured with a nut-brown painted stem, finished in polished nickel with stone or dark grey coloured chinette shades this collection would fit perfectly in architectural surroundings with a muted colour palette.

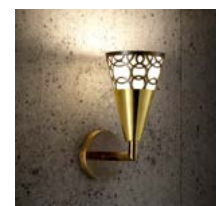
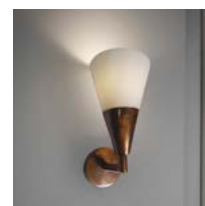
2020 saw the launch of an exquisite bathroom collection, a first for Christopher Hyde. Whilst designed with bathrooms in mind, this collection of wall sconces has the versatility to be used in any space.



The Roma and Naples wall sconces have a minimalist, sleek design, available in antique bronze and polished nickel. Whilst the Amalfi features a gorgeous spherical cut-out.

Influenced by nature, the Vieste and Vernazza feature an intricate leaf detail. Each wall sconce in this collection has been designed to include an opal glass shade. The use of the glass shades makes these sconces fit for purpose in every bathroom zone except zone 0.

Recently Christopher Hyde has been working on new product designs and is excited to include these luminaires to the eclectic collections. The Christopher Hyde Lighting team based at the Design Centre, Chelsea Harbour, are always available to offer expert advice.



Please contact sales@christopherhyde.com for information.

CHRISTOPHER HYDE

LIGHTING



Finest quality of classic and contemporary lighting to complement any interior



INDUSTRY
PARTNER

Chelsea Harbour, London.

www.christopherhyde.com | +44 (0)20 7351 0863 | sales@christopherhyde.com f @

GEBERIT GROWS ITS WASHROOM OFFERING WITH **TWO NEWLY-NAMED COLLECTIONS - SELECT AND ASPIRE**

Geberit has extended its offering to designers following the launch of two newly named washroom collections. The wider product portfolio will provide designers with an even greater range of washroom solutions for their projects.

GEBERIT SELECT COLLECTION

Geberit has launched its new Select Collection, which offers designers functional, affordable and on-trend design possibilities across Geberit's range of space-saving concealed cisterns and wall-hung technology solutions. The Select Collection includes innovative storage solutions and furniture ranges for smaller spaces. The new Renova Plan series, for instance, incorporates a selection of options to create a variety of storage possibilities in even the smallest of areas. With slim ceramics and a streamlined design, the range also brings a sense of lightness to the bathroom. Geberit's Selnova Square Slim range, meanwhile, incorporates a narrow rim design to maintain the illusion of space in the washroom, with the modular storage cabinet and mirror cabinet also offering additional storage space – bringing design and functionality to the fore.

GEBERIT ASPIRE COLLECTION

Geberit is continuing to innovate in the luxury bathroom market with the expansion of its high-end offering, now known as the Aspire Collection. The exclusive collection includes well-known ranges such as Acanto, Smyle and the iCon bathroom series.



Geberit has also introduced its pioneering bathroom innovation, Geberit ONE, which combines behind-the-wall sanitary technology with stylish ceramics. Everything from the bathroom cabinet to the basin is integrated into the pre-wall – the result is a minimalist aesthetic and easier access for cleaning. Geberit ONE also offers a wide choice of slim furniture options, from a floating washbasin to a mirror cabinet inset into the pre-wall with fully integrated lighting.

EVERYTHING IS CHANGING AT GEBERIT..

Mark Larden, Managing Director of Geberit, explains more about the new additions: “Whether you’re new to the Geberit brand or an existing partner, we’re continuing to optimise and evolve our products and services. That’s because we understand the

importance of meeting the ever-changing business requirements across our sectors. “The introduction of these new collections will open up a wider range of choice for designers across the mid-premium and basic-mid bathroom segments and with that, too, a wealth of new opportunities. Our solutions will not only enable designers to integrate new ideas and technologies, but also challenge the boundaries of what’s possible – helping create inspirational spaces that achieve functional goals and high-quality design.”

...BUT NOTHING IS CHANGING

But, as Mark adds, Geberit’s 150 years of innovation, know-how and continual investment means that it will remain at the forefront of technology in the bathroom space – behind the wall and in front of the wall. “From washroom solutions that offer new design possibilities, to products that lead the way in championing hygiene, sustainability and smart technology, we will continue to redefine the washroom,” he adds. “While we continually innovate and adapt, we also remain dedicated to working with designers to provide the same great service they have come to expect from Geberit.”

A NEW ERA

From on-trend washroom designs to cutting edge technology Geberit is proud to be setting the standard for a new era in sanitary design – giving designers more choice and more selection across a wider breadth of projects.

For more information visit www.geberit.co.uk

NEW

■ GEBERIT

THE GEBERIT BATHROOM EVERYTHING IS CHANGING BUT NOTHING CHANGES

DESIGN
MEETS
FUNCTION

Everything is changing at Geberit. Introducing two newly named bathroom collections to enhance your next project. Offering an even wider range of solutions; including on-trend bathroom designs, to cutting edge technology that champions hygiene and sustainability at range of price points. But nothing is changing. We are committed to making specifying Geberit easy; from planning, design and technical support to approved CPD training – we're proud to be setting the standard for a new era of bathroom design.

Discover more at geberit.co.uk/ourcollections

↑ Geberit Renova Plan

HIGH QUALITY INTERIOR DECORATIVE LIGHTING



CASADISAGNE is a French manufacturer of high quality interior decorative lightings : table lamps, floor lamps, wall lights, ceiling lights, which was founded in 1997.

Since more than 20 years, we design and manufacture our products in France, in our workshop located in Provence, near Avignon. Our lightings are made in brass, a noble material, and a guaranty of elegance and quality.

Casadisagne combines noble materials and traditional technics to make quality its top priority. Specialized in brass work, the expertise of Casadisagne optimizes the brass qualities, and then allows any creativeness.

The Casadisagne's speciality is handmade patina, slowly revealing all the nuances of brass and in particular the depth of the material. Black or matt gold, patina are obtained through the traditional techniques of oxidation, dyeing and waxing.

Casadisagne style is definitely elegant, refined, contemporary and timeless. The creations are mainly made in-house, in order to give a strong consistency with style and image. Occasionally, some creations are made by external designers.

They have been designed to decorate and lighten with elegance and discretion all kinds of interiors, whether classical, contemporary or modern.

Our broad collections allows us to meet all expectations : lighting an office, a bedroom, an entrance, or screening a living room.



www.casadisagne.com

CASADISAGNE

Made in France



www.casadisagne.com

ELEGANT STORAGE SOLUTIONS

Transform your home with stylish yet practical storage solutions to achieve a streamlined, clutter-free space. Take advantage of multi-functional furniture such as ottomans, storage beds, sideboards and shelving to help integrate extra storage into your home. These hardworking pieces of furniture allow you to store more, yet still be aesthetically pleasing.



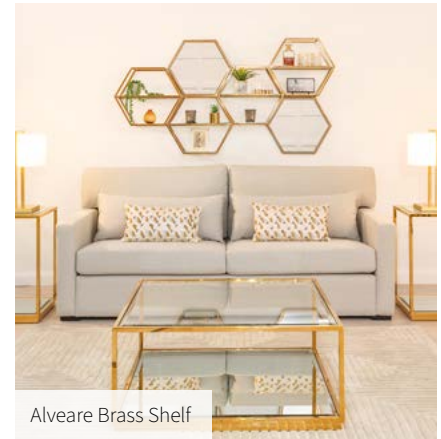
Pumpkin Storage Ottoman

More and more home décor trends are connected with storage and one of the main pieces that is popular for interiors today is an upholstered ottoman – a great choice for living areas and bedrooms. Ottomans not only add style and provide much needed storage space, but can also cleverly double up as coffee tables, extra seating and even beds.

Exclusive to My Furniture, the striking Pumpkin Storage Ottoman not only provides great storage, but can also double up as a footstool or extra seating.

An ingenious new design for My Furniture is The Jack Ottoman Bed, which can be effortlessly transformed from an ottoman to a bed in seconds. Perfect for those unexpected weekend guests.

Storage beds have long been a staple for extra storage in the bedroom and are the perfect solution for storing bulky items like seasonal bedding and even suitcases. Adding that extra bit of glamour is now easier with the stunning range from My Furniture.



Alveare Brass Shelf



Anastasia Sideboard

Beautifully fluted upholstery, coupled with a clever gas lift mechanism for easy opening, makes these beds not only showstoppers, but perfectly practical too. Priced from just £549.99.

Although their primary function is storage, shelving can tie the interior design of a room together beautifully. The right shelving can even stand out as a star feature – such as the stunning Alveare Modular Shelving Unit. The ingenious honeycomb design lends itself to be mounted in multiples alongside the

accompanying mirror - creating a stunning display, as well as a useful storage space.

As far as storage solutions go, a sideboard more than answers spatial concerns with large compartments and spacious drawers. Offering a wide range of options, the newest and most elegant design in the My Furniture collection is the Anastasia Sideboard. This impressive piece, available in three finishes, has a distinctive curved shape, featuring toughened mirrored glass and a polished marble top.

Discover luxury furniture and a wealth of home décor inspiration. visit: **my-furniture.com** or call freephone **0800 092 1636**.

FAST AND FREE DELIVERY TO UK MAINLAND.
Delivery available throughout Europe.



my furniture

my-furniture.com

enquiries: 0800 092 1636

TALKING OF COOPERATION

HANDMADE DESIGN

A few years ago, Dr. Uta Meeder founded the sustainable design label MAOMI in Mannheim. What originally started as a studio for renovation and interior consulting has developed into a successful and award-winning label for furniture and home accessories.



How did you go from studying at a business school to working with design?

In school already, I was mainly interested in art, photography and graphics. I tried out a lot and after graduating from high school I did an internship with a well-known people photographer and one in graphic design.

At the same time, I was also passionate about mathematics.

In the end, I didn't study design, but business administration, and yet, for my work I have circled back to the core field of design. The fact that I didn't study design allows me to be free of rules in my head when designing. I don't follow rules because I don't know them: this makes me flexible in my designs - independent. Working without rules and learning by doing; initially my work was a long series of experiments.

Can you recall a key moment when the foundation for MAOMI was laid?

The name MAOMI was born by chance in 2001 during my PhD. It was a fancy word that I liked so much that I reserved the associated domain. The company came about many years later. With the birth of my fifth child, I left management consulting and

explored new fields. Among other things, I bought a small apartment, gutted it and completely redesigned it. The result was a full-fledged alternative to a hotel. This was at a time when Airbnb didn't exist as today. Working with the space and optimizing the living functions as well as the visual and haptic quality flashed me in a way that I didn't want to do anything else. After a few more projects I started my own business.

How do your ideas come about? What inspires you the most?

The feel of a material, the energy of a piece of art, or the grace of a time-honored craft technique. The velvety character of a matte glaze, 16th century celadon vessels or their modern interpretation by a contemporary artist. The craft of barrel making, perfected over centuries of practice in winemaking.



It is this combination that appeals to me: the perfection of craftsmanship, the organic character of natural materials, and the spirituality that individuals bring to their work, their ideas, and also the vision of their subsequent use. I admire the precision of the craftsmen we work with and I love the sensation of the natural, processed material and the harmonious balance in a minimalist design language.

Once you find your inspiration, how do you decide which direction it will take you in?

Our products, created through collaboration with artists and craftsmen from around the world, are reminiscences of the cultural inventory and recourse to things elaborated and created by people. Together with the artists and craftsmen we further develop these valuable cultural assets and traditions and bring them into the modern age. We developed the KAYA porcelain based on our design idea together with our manufacturer's potter directly on site in Vietnam - from my idea for a filigree espresso cup, by and by we developed a whole tableware series. The design of the bathtub OFURO combines Japanese traditional patterns with the original



art of barrel tying by our Palatinate partner. It is this respectful, fruitful and inspiring collaboration that makes the high quality of our products possible and leads to the unique design MAOMI stands for.

So creative work is always best done in a team?

Absolutely.

Talking of cooperation, what connects your designs? What is the common creative thread, so to speak?

In descriptions of our design objects, we always find the abstracted Japanese influences. All of our products are described as minimalist and stripped back or pristine. This minimalism combines functionality and aesthetics. We focus on the highest quality detail and aesthetic durability, and by choosing materials that not only look good but also feel good, we add warmth to the minimalism and a tactile quality to the design.

What's next on your agenda?

Currently, a new tableware series is about to launch. It is largely inspired by traditional vessels from centuries past and the peculiarities of celadon glazes. - During my trip to Vietnam, while wandering through various antique stores, the design idea grew and developed in my head. Together with an artist who has been experimenting with and researching this particular technique for years, these ideas were brought to life.

INNOVATION **IS OUR DRIVE**



The Tojo Möbel GmbH is a dynamic, innovative company that was founded in June 2000. The aim is to create furniture with alongside timeless design which distinguish them from its functionality, ecology and economy. The sales success of the design-oriented and award-winning products at affordable prices shows that the Tojo Furniture Co reflects the times.



Benefit also from these bestsellers and the minimalist products, which bribe by characterize simple elegance and superior functionality.

By working with various young designers Tojo could expand constantly. For innovation and attractive design, the products were awarded with several design and innovation awards and nominations.“

www.tojo.de | info@tojo.de

Tojo™



Innovation is our drive



www.tojo.de



Design Furniture

The Tojo Möbel GmbH is a dynamic, innovative company that was founded in June 2000. The aim is to create furniture with alongside time-less design which distinguish them from its functionality, ecology and economy.

The sales success of the design-oriented and award-winning products at affordable prices shows that the Tojo Furniture Co reflects the times.



reddot winner 2021
furniture design





CARIBBEAN
BLINDS UK LTD

Classic

outdoor living pod™

built to order & installed
in less than 8 weeks

 **MADE IN BRITAIN®**



FROM £11,990 INC. INSTALLATION
SCAN QR CODE TO FIND OUT MORE

t 0344 800 1947
e info@cbsolarshading.co.uk
w cbsolarshading.co.uk

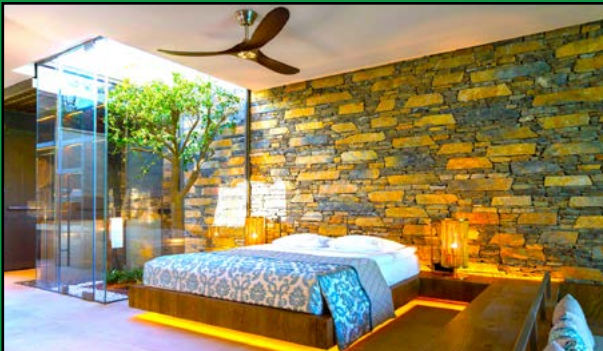




Beautiful Designer Ceiling Fans



Stylish - Reliable - Silent



THE HENLEY FAN COMPANY LTD



01256 636 509
www.henleyfan.com

EARTHBORN PAINTS

A newly renovated 19th century building in Leeds recently opened its doors to accommodate travellers. The new hostel has 12 truly unique rooms, all designed by local and international artists. Earthborn's Claypaint was on hand to help these talented artists turn their ideas into reality.

Hannah Platt, Assistant Manager at the Art Hostel, said 'We approached Earthborn because of their highly recognised eco credentials and their breathable Claypaint. We wanted to collaborate with a paint company that cares about their carbon footprint and would also suit the needs of such an old building'

Hannah added "The artists found Earthborn's Claypaint to be a refreshing change from normal paints. There was zero smell, the coverage



was amazing and Claypaint has a beautiful palette of colours for our artists to work with. We highly recommend anyone to try Earthborn paint, you won't be disappointed."

Claypaint is available from Earthborn's network of distributors in its Classic palette of 72 colours, plus white and 12 Modern Country Colours.

www.earthbornpaints.co.uk

CULTURAL CONNECTION: INTRODUCING LACE MARKET POINT WITH DAVID PHILLIPS

Located in the beautiful city of Nottingham is Lace Market Point. A landmark development with stylish appeal, this residential project was a fantastic opportunity for leading furnishing provider David Phillips to work alongside Monk Estates on their first Built-to-Rent (BTR) project.

With over 90 apartments in the development, David Phillips was commissioned to furnish two show apartments in two different interior design styles. This approach enables prospective tenants to have more of a choice over the interior décor, selecting a scheme that aligns more with their personal style.

The design concepts were inspired by the rich history of Nottingham, with a focus on its lace production and nearby mills, to create unique interiors that offered a subtle nod to the past:

Modern Sophistication

The first aesthetic is based on the narrative of lace. As a refined product, David Phillips selected furniture that had elegant design details and a more feminine quality.

"Titled modern sophistication, this scheme features a rich terracotta sofa, brass metal accents with warm walnut wood and taupe finishes. Organic rounded shapes are found in the coffee table and armchair to help create a soft, inviting space." Mark McDonnell, Head of Design at David Phillips

Textured Industrial

The second scheme embraced the industrial heritage of the area, selecting pieces with a bold design aesthetic, strong geometric shape, black metal work and a more masculine colour palette.

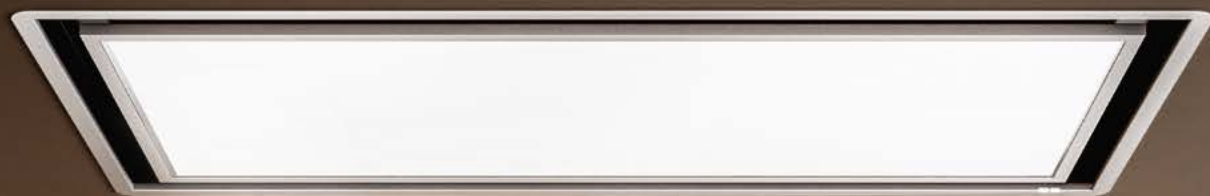
"We named this look textured industrial. Blue and rust were the signature colours in this concept to bring muted pops of colour to the upholstered items. In the bedroom, a modern oak and black finish was used on the furniture, helping to enhance texture and playfulness, whilst still retaining an industrial look and feel." Mark McDonnell, Head of Design at David Phillips

Full of life, these living spaces feature vibrant accessories that offer a hint of characterful colour, offset perfectly by the more neutral hues to create a calming space, perfect for escaping bustling city life.

In addition to the apartments, this luxurious development benefits from a gym, retail space, meeting room and communal garden. Creating a visual statement, the balconies are wrapped in ornate lace-inspired metal frames for a characterful finishing touch.



www.davidphillips.com



SKYDOME HOOD, A WINDOW ON YOUR IDEA OF HOME.

TAKE BACK YOUR SPACE WITH SKYDOME BY ELICA, THE HOOD THAT IS ALSO A LUMINOUS WINDOW IN YOUR CEILING.

The light panel adapts to the desired atmosphere: adjusts the colour of the light from warm white for intimate and convivial moments to cool brilliant white for cooking and food preparation.

High performance and almost silent thanks to Comfort Silence technology, Skydome is the undisputed star of open spaces.

Skydome | Design Fabrizio Crisà

Discover all the advantages on elica.co.uk    

 **elica**
aria nuova

EXEDRA2: DOUBLE POCKET DOOR SYSTEM WITH CAM-ASSISTED DOOR EXTRACTION AND CUSHIONED DOOR INSERTION

Exedra2 is the innovative and exceptionally-performing evolution of the Exedra pocket door system which, thanks to its ingeniously-engineered mechanism, enables the simultaneous opening of two linked doors. The system is available in two versions:

Exedra2 Star where the compartment that houses the mechanism is always hidden by the cover panel which is fixed to the front of the system. In the second version, **Exedra2 Smart**, the door edges are visible when they are folded into their compartment and, as a result, the system requires less depth of the cabinet. There are no load-bearing frontal profiles on either the top or bottom



of the cabinet, thus eliminating any need for additional central supports.

SALICE

www.salice.com | 01480 413831
info.salice@saliceuk.co.uk

POLYX®-OIL ORIGINAL
3032 Clear, Satin
 Enhances the colour

POLYX®-OIL EFFECT
3044 Raw, Matt
 Preserves the untreated effect

Especially suitable for wooden floors!

- Extremely durable and hardwearing
- Very water and dirt resistant
- No sanding necessary for spot repairs or future applications
- Microporous, breathable finish which does not crack, peel or flake

osmouk.com

A MODERN RETREAT IN THE CAPITAL THE STANFIELD ROAD PROJECT WITH HAVWOODS



Located in north east London is the beautiful Stanfield Road residential project. This terraced property with its stunning period features, including arched windows and a brick façade, has had an interiors transformation with new wood flooring supplied by Hawwoods.

Providing seamless wood flooring solutions, Hawwoods' Cottage Character in Herringbone from the V Collection was specified for its warm tones and natural beauty. With its rustic hues and character grade markings, these planks are an ideal choice for either traditional or modern interior spaces, adding depth and charm.

Used throughout the ground floor of the property including the hallway, kitchen and living space, the on-trend herringbone design allows for a seamless flow from room to room – complementing the natural light and white walls.

The design is Scandi-inspired and paired back, with matt black cast-iron radiators and blue statement furniture acting as a contrast against the natural materials. The tropical wallpaper in the hallway and the cabinetry in the kitchen follows the blue theme, resulting in a striking space. Offsetting this colour palette are the soft furnishings in colourful, earthy tones, perfectly matching the warm undertones of the flooring.

With the help of Hawwoods, this home has been transformed to create a comfortable and inviting space. With an array of herringbone flooring solutions available, there is a style to suit any interior design scheme.



www.havwoods.com/uk | Photography - Scopic

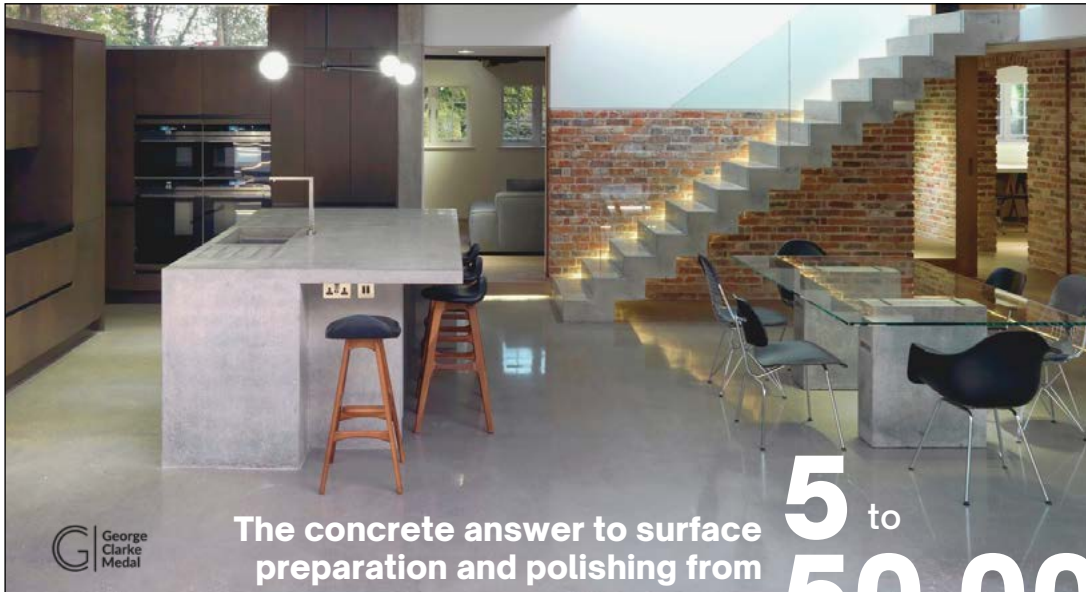
torc pots



@torc_pots



www.torc-pots.com



The concrete answer to surface preparation and polishing from

5 to 50,000m²

With industrial interior style in ever increasing demand, we know it's getting harder and harder to resist the smooth and always unique finish of polished concrete. That's why The Preparation Group, with over 30 years' experience and the largest, most innovative fleet of surface preparation equipment in the UK, are dedicated to providing the most simple, and cost effective solution to achieve that loft-luxe look - whatever your project size. How?

From your home to your warehouse, our highly qualified, professional teams bring a wealth of industry experience that you can rely on to advise you, and meet your project needs. Whether you choose to hire our professionals to achieve that precise yet versatile diamond-polish, or decide to do-it-yourself guided by our variety of user-friendly training packages, your contemporary, hard-wearing and easy-to-care-for surface is achievable with The Preparation Group.

Contact one of our experts today to begin your project
Call +44 (0)1522 561 460



Kazak 450 x 320cms £4,200 + VAT.

If you use Persian or other handmade Oriental rugs in your room settings, you may find our stock and prices of interest.

To see examples click norell.uk

LEON NORELL (Est. 1925)

8 Atlas Business Centre,
Oxgate Lane London NW2 7HJ
(half way up)

Tel: 020 3441 5803

Email: leon@leonnorell.com

By appointment if possible please

THEFLOORINGSHOW.COM

    @TheFlooringShow

Image courtesy of Victoria Carpets & Design Floors



REGISTER NOW

18 – 20 SEPTEMBER 2022
HARROGATE CONVENTION CENTRE



SCAN THE QR CODE OR HEAD TO
WWW.THEFLOORINGSHOW.COM TO REGISTER

CELEBRATING
60
YEARS
1962-2022



THE FLOORING SHOW
18-20 SEPTEMBER 2022
HCC, HARROGATE



GRAPHENSTONE®

PURIFYING PAINTS



VOC & PLASTIC FREE - CO2 ABSORBING - CRADLE TO CRADLE CERTIFIED

info@graphenstone.co.uk - 01379 772940 - graphenstone-ecopaints.store