



RWinvest

GUILDHALL SQUARE CONSTRUCTION UPDATE

August 2019



GUILDHALL SQUARE

CONSTRUCTION UPDATE

August 2019

WORKS PROGRESSED

In the latest Guildhall Square construction update, the scaffold has been taken down on the external refurb which is now complete.

All unit shower rooms are tiled, and bathroom fitting has started. Orders have been placed for the kitchens and the 1st fix plumbing works for the kitchens have progressed in anticipation for their arrival.

The old external chimney has been removed. Brickwork has been carried out as required, and fire stopping has developed throughout the build.

External masonry painting has completed during this time and the TV and Statutory Assessment Test set up is complete.

WORKS ANTICIPATED

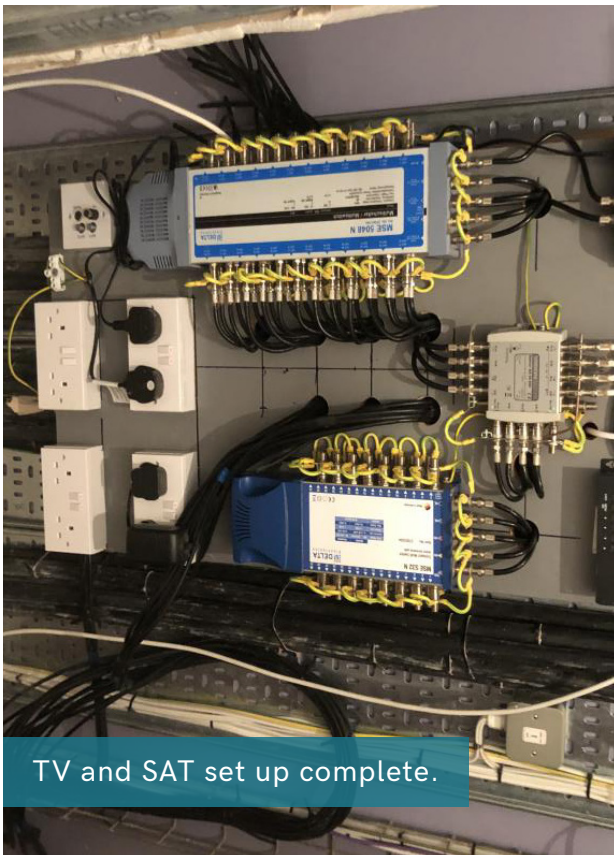
Orders will be placed for the lift refurb, tank and pumps, electric upgrade, Bemco and the internal doors.

New windows are scheduled to be fitted, whilst bathrooms, common area ceilings and smoke shaft 2nd fix are due for completion.

Tasks anticipated to commence include 2nd fix joinery, external painting, decoration and the installation of kitchens.



Full external refurb complete.



TV and SAT set up complete.



Typical shower room tiling and bathroom fit.



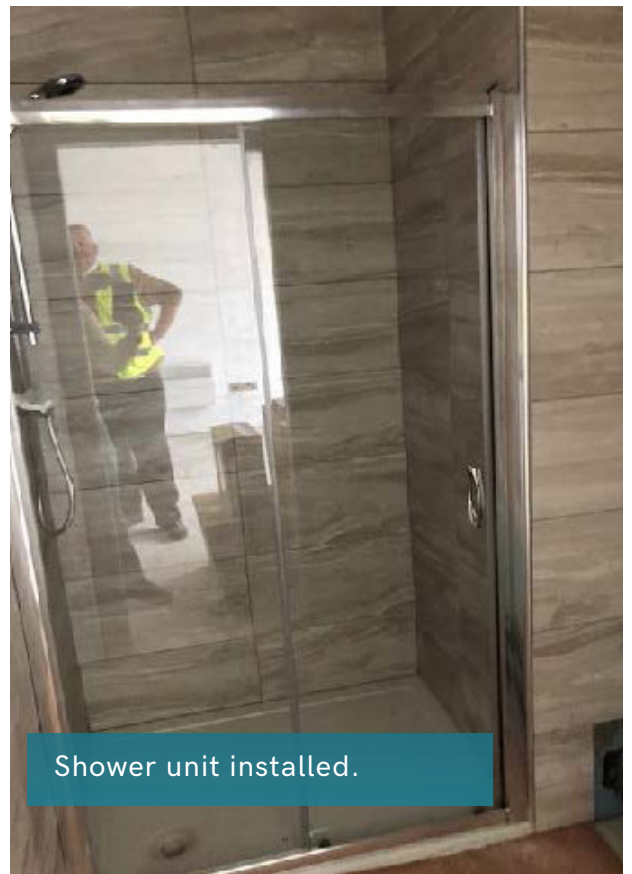
Typical fitted shower room.



Typical shower set up.



Typical tiling complete.



Shower unit installed.



Bathroom materials on site.



Kitchen plumbing 1st fix ready for fit.



Kitchen 1st fix.



RWinvest

Liverpool +44 (0)151 808 1250

London +44 (0)207 100 4141