



ARCHETECH

Turning Dreams into Reality

Issue 40 £4.99





PALETTONE

Discover a new world of colour

For colour, for choice, think Palettone.
Commercial homogeneous flooring in
a spectrum of 50 shades.

Order free samples from
www.polyflor.com/palettone



English Garden & Woodland Air

ARCHETECH

Turning Dreams into Reality

Main Features

Editors Choice **08 - 27**

Architectural Projects & Services **30 - 31**

Bathrooms & Kitchens **40 - 41**

Doors, Windows & Fittings **47 - 53**

Surface Design Show **59 - 61**

Floors & Flooring **65 - 69**

Heating, Ventilation & Insulation **70 - 77**

Interiors & Interior Design **81 - 83**

Landscaping & External Works **88 - 91**

Lighting & Electrical **95**

Roofing, Cladding & Facades **96 - 101**

Safety, Security & Fire Protection **102**

Timber & Timber Frame **103**

Editorial Highlights **106 - 113**

Case Studies/Trade Shows

Urban Oasis - 04

ACDF Architecture + Architecture49, in partnership with IBI Group, invite Vancouver residents and visitors to experience PARQ, an urban oasis featuring a 72,000 sq. ft. casino, two luxury hotels, eight diverse restaurants, a fitness centre and spa, a 30,000 sq. ft. rooftop park and 60,000 sq. ft. of state-of-the-art meetings and event space.

Jackson Teece - 12

Aveo Bella Vista is, in a way, the first of its' kind. The design for this 10 storey residential apartment building (containing approximately 2700m3 of CLT) breaks the mould of the typical mass timber designs we have seen coming out of Europe and being realized internationally over the last decade.

The Architecture MasterPrize - 22

The Architecture MasterPrize (formerly AAP), one of the most comprehensive architecture award programs in the world, has announced this year's winners: the most innovative, creative and inspiring architectural projects from all over the globe.

Grosvenor Avenue - 38

Grosvenor Avenue by fourth_space began as a project in 2014 with the architect suggesting to an independent developer that they could deliver a design-led project that challenged the bog-standard approach to materials and finishes associated with small developments.

White Lion House - 42

White Lion House is a mixed-use building containing 13 social and affordable rented homes in Central London, located at the threshold of a new public space around Centre Point. It is the first completed phase of the ongoing redevelopment of the Grade II listed Centre Point complex.

YARD - 62

Located at the geographic centre of the city of Portland, YARD is a 21 story mixed-use building that combines residential, commercial, retail, office and parking.

Twenty Grosvenor Square - 78

International design and development firm, Finchatton, has partnered with the world's leading luxury hospitality company, Four Seasons Hotels and Resorts, to offer the first standalone Four Seasons Private Residences. Located on one of London's finest squares in the heart of Mayfair, Twenty Grosvenor Square, A Four Seasons Residence will offer 37 luxurious residences of three, four and five bedrooms with interiors by Finchatton.





AN URBAN OASIS IN THE HEART OF **VANCOUVER'S** **ENTERTAINMENT** **DISTRICT**

∴ **ACDF ARCHITECTURE + ARCHITECTURE49 + IBI GROUP**

ACDF Architecture + Architecture49, in partnership with IBI Group, invite Vancouver residents and visitors to experience PARQ, an urban oasis featuring a 72,000 sq. ft. casino, two luxury hotels, eight diverse restaurants, a fitness centre and spa, a 30,000sq. ft. rooftop park and 60,000 sq. ft. of state-of-the-art meetings and event space.

"PARQ was conceived as the missing link between the active environment of BC Place stadium and the downtown core's thriving entertainment district," explains lead design architect Maxime Frappier.

"We have put forward a design that not only fulfills that role, but which also captures the essence of the city and its breathtaking natural surroundings."

AUTHENTICALLY VANCOUVER

Embraced by the trendy Vancouver neighbourhoods of Yaletown and Gastown, the mixed-use complex designed by ACDF + Architecture49 and IBI Group is a tribute to the city's diverse natural and cultural environments. Beginning with design elements that embraced the stadium's emblematic architecture, the team embarked on a journey to create a seamless flow that would extend from BC Place and PARQ, to the complex's adjoining neighbourhoods and majestic landscapes. Defined by a myriad of lines, shapes, curves and slopes, PARQ's design is comprised of multiple façades paying tribute to different elements of the complex's surroundings. Its fluid forms and dynamic composition reflect the mountains, valleys, gorges and seascapes that frame the city. A curtain wall adorns the main façade, unveiling copper earth tones with shimmering louvers set in a pattern extracted from pixelated mountain images. As sunlight shines and repositions through the course of the day, the metallic louvers bring the building to life in animated ways, while their reflections 'dance' on the nearby waters of the Pacific Ocean.



LIFE BEHIND THE FAÇADE

Seamless connections between PARQ's interior and exterior further extend the predominant theme. An abundance of clear glass and oversized windows connect patrons with the vibrant pedestrian flow and bike path traffic of surrounding city streets, while enticing passersby to enter the complex to sample one of eight restaurants and lounges, featuring a wide range of regional and provincial cuisines. Commercial space drives ground level activity, while abundant natural sunlight greets visitors looking to try their luck at the complex's 72,000sq. ft. multi-level casino. Spread across the second and third levels, Parq Vancouver's casino includes 11 private salons, including four with balconies offering stunning city skyline views.

Getting down to business, Parq Vancouver offers more than 60,000sq. ft. of multifunctional meeting and event space spread across the fourth floor. The facilities are comprised of boardrooms, flexible meeting spaces and 13 ballrooms, including the 15,604sq. ft. state-of-the-art Parq Grand Ballroom, now the largest hotel ballroom in Vancouver.



PARQ WAS CONCEIVED AS THE MISSING LINK BETWEEN THE ACTIVE ENVIRONMENT OF BC PLACE STADIUM AND THE DOWNTOWN CORE'S THRIVING ENTERTAINMENT DISTRICT

THE PARK ADDS A SUSTAINABLE ELEMENT TO THE PROJECT AND IS A MODEL EXAMPLE OF INNOVATIVE USE OF GREEN SPACE



Built to LEED Gold Standards, PARQ raises the bar on environmental considerations with its signature 30,000sq. ft. outdoor, sixth level park. The lush, urban retreat, features more than 200 native pines and 15,000 local plants. The rooftop park's Nordic flora and scenic mountain views provide a 'disconnection' within a sea of connections, offering moments of tranquility seemingly worlds away from the hustle and bustle of the streets below.

"The park adds a sustainable element to the project and is a model example of innovative use of green space," says Maxime Frappier. "When you combine that atmosphere with the surrounding scenic views, it transports nature into the heart of an urban environment."

A ROOM WITH A VIEW

Rising above the urban garden, PARQ is also home to two high-end hotel experiences, including Western Canada's first JW Marriott. The hotels provide direct access to the casino, while contributing a wide range of complementary amenities including restaurants and lounges, meeting and event spaces, a spa and wellness centre and indoor parking.

The JW Marriott Parq Vancouver occupies the twin towers on the east side of the complex, with 281 guest rooms and 48 luxury suites, including a stunning split-level villa. The hotel also offers invigorating wellness and relaxation courtesy of the Spa by JW, a 17th-floor oasis featuring a steam room, a state-of-the-art fitness centre and personalized signature treatments using Aromatherapy Associate products. Spa by JW also offers the added serenity of the Aqua Lounge, an outdoor yoga space and hydrotherapy tub featuring inspirational views of the complex's natural surroundings.

The newest addition to a dynamic portfolio of more than 100 Autograph Collection Hotels around the world, The DOUGLAS offers a seamless connection to the magnificent natural surroundings of the Parq complex. The 188-room property includes seven luxurious suites and three two-story lofts. Guest rooms are appointed with warm woods and task lighting, while in-room amenities include purely natural Aesop products and detoxifying charcoal water.

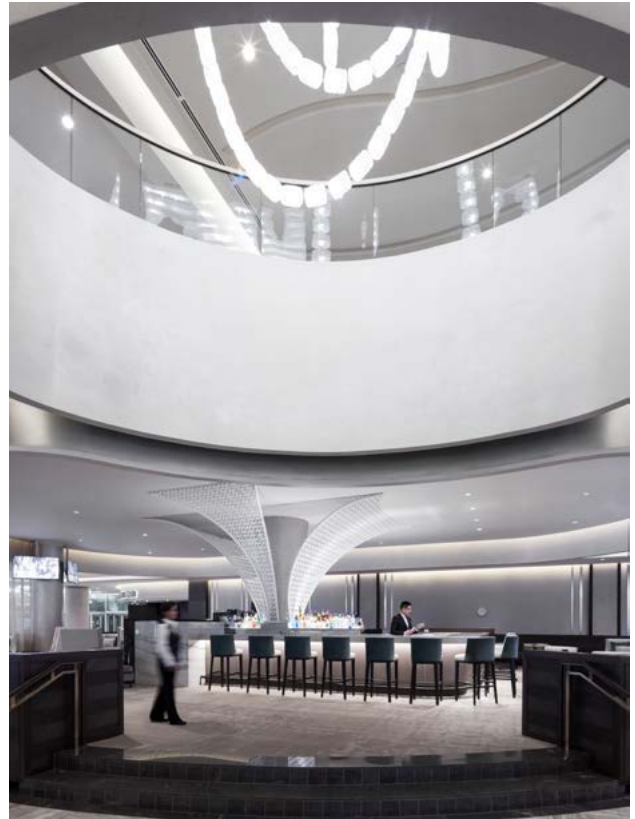


Nature abounds in the elegant surroundings of The DOUGLAS' sixth-floor lobby, which connects to the complex's rooftop park. A living green wall and 25-foot Douglas fir replica greet arriving guests, while the adjacent D/6 Bar & Lounge serves up a collection of signature handcrafted cocktails, including Douglas fir-infused gin.

Completed in 2017, PARQ exceeds the significance of merely planning, designing and constructing a multi-functional complex. The facility is a tribute to the City of Vancouver and its abundant natural attributes, while reflecting a respectful architectural vision that considers and complements adjoining developments in the surrounding area.

PROJECT DATA

Client: Paragon Gaming, 360 Vox, Dundee Corp
Location: Vancouver, Canada
Construction started: June 2015
Opening date: October 2017
Program: 1 Casino, 2 Hotels, 5 Restaurants, 1 Gym, 1 Spa, numerous reception venues and an elevated park
Area: 72,481m²
Construction cost: \$400M



Design Architect (schematic design and design development phases): ACDf Architecture / Architecture49
Lead Designer: Maxime-Alexis Frappier
Design Team: Maxime-Alexis Frappier, Robert Lapierre, Michel Panzini, Joan Renaud, Laurence Lebeux, Neil Melendez, Mathew Belaen, Evelyn Velghe, Virginie Pontbriand

Architect of Record: IBI Group
Principal in charge: Ron Eagleston, Architect, AIBC
Team: Mojan Nozari, Mike Watts, Architect, AIBC, Martin Bruckner, Architect, AIBC, Jeff Christianson, Daniel Friesen, Omid Khodpanahi, Rahman Mahvash, Nadine Varahram, Negar Hamidi, Pascal Jean-Mariet, Nabil Sallam, Fariba Mahmoodian, Damoon Azhary
Interior Design: Munge Leung, Celano Design Studio, Sarah Leinbach
Landscape Architect: PFS Studio
Mechanical Engineer: Intégral Group
Electrical Engineer: Nemetz and Associates Ltd
Structural Engineer: Glotman Simpson
General Contractor: EllisDon

www.acdf.ca/
a49montreal.com/
www.ibigroup.com/



Ultra-discreet loudspeakers for any location

British loudspeaker designer, Monitor Audio, has a range of Custom Install speakers for every situation. Their ultra-discreet in-wall and in-ceiling speakers deliver a stunning audio performance whilst protecting the room's décor. For more extreme environments, such as outdoor terraces or pool rooms, they offer a choice of speaker ranges, all of which deliver Monitor Audio's award-winning sound.



monitoraudio.com



Editor in Chief
Antony Holter
antony@archetech-media.co.uk

Editor
Isabelle Hart
isabelle@archetechmag.co.uk

Sales Director
Steve Hawkins
steve@archetech-media.co.uk

Sales Manager
Lauren Pettman
lauren@archetech-media.co.uk

Business Manager
Josh Holmes
copy@archetechmag.co.uk

Studio Designer
James Sayer
james@archetechmag.co.uk

Publishing Director
Martin Holmes
martin@archetechmag.co.uk

Sales Support Executive
Charlotte Charlesworth
charlotte@archetech-media.co.uk

Accounts
Lauren Davis
lauren@archetechmag.co.uk

Digital Manager
Jamie Bullock
jamie@archetech-media.co.uk

ARCHETECH

Turning Dreams into Reality

The Archetech magazine is an insightful information source for Architects, Architectural Technologists and Interior Designers. We feature lead stories on current projects, industry news and case studies so that our readers have the opportunity to keep up to date in the ever changing world of architecture and design.

Archetech offers architectural and design services to all those who are initiating, planning and implementing projects. Whether you're an interior designer, architect, technologist, investor or builder who is searching for inspiration for the next project, Archetech hosts the latest products, case studies and services to meet those needs.

With sharp editorial content, a cutting-edge design approach and informative written style, our advertisers and readers alike can take confidence in our experience and ability in matching your product to the needs of the marketplace.

Archetech Media Ltd
Tel: 020 3911 4067
www.archetech.org.uk
info@archetechmag.co.uk

Every effort is made to ensure the accuracy and reliability of material published in Archetech Magazine, however, the publishers accept no responsibility for the claims or opinions made by contributors, manufacturers or advertisers. No part of the publication may be reproduced or transmitted in any form or by any means, mechanical, electronic (including printing), recording or stored in any information retrieval system without the express prior written consent of the publisher.

SUBSCRIBE NOW

Digital Edition

SUBSCRIBE TO OUR ONLINE ISSUES FREE OF CHARGE

- Designed for iPad, laptop, phone or computer
- Accessible, anytime anywhere
- All of our issues stored in one place: get unlimited access to our previous and future issues

Hardcopy Edition

SUBSCRIBE TO OUR HARD COPIES FREE OF CHARGE

- The magazine gets delivered directly to your door once every issue is published
- The magazine showcases the quality of the magazine and content inside



HAVE YOU GOT A PROJECT YOU ARE PROUD OF?

If you've recently finished a project, conversion or renovation, why not submit it to our Managing Editor for a chance to be featured in our next issue! Email antony@archetech-media.co.uk with details of your latest project.

Visit: www.archetech.org.uk/subscribe

ARCHETECH

Turning Dreams into Reality



Free Trade Subscription





Archetech Magazine

The Archetech magazine is an insightful information source for Architects, Architectural Technologists and Interior Designers. We feature lead stories on current projects, industry news and case studies so that our readers have the opportunity to keep up to date in the ever changing world of architecture and design.

info@archetechmag.co.uk 020 3911 4067

www.archetech.org.uk/subscribe



AVEO BELLA VISTA

: JACKSON TEECE

Aveo Bella Vista is, in a way, the first of its' kind. The design for this 10 storey residential apartment building (containing approximately 2700m³ of CLT) breaks the mould of the typical mass timber designs we have seen coming out of Europe and being realized internationally over the last decade. Originally conceived as a conventional build, Aveo were guided by Jackson Teece and Stongbuild to incorporate CLT into the design, to demonstrate industry leadership.

What sets this project apart from other recently completed mass timber buildings is the increased focus on architectural expression and functional planning over a design purely driven by construction efficiencies. Mass timber buildings to date are typically 'boxy' looking (no curves) with squared-off, strictly stacking floor plans and inbound balconies (not cantilevers, within the façade outline, bound by 3 walls), while the application of hybrid construction methods (combining engineered timber, steel and/or concrete) is not yet well established.

This project had to achieve a balance between the desired architectural design outcome and the construction rationale. Some of the challenges involved complicated floor slab junctions, in order to realize the desired apartment layouts and sophisticated hybrid steel and timber connections to achieve the curved, seemingly cantilevered balconies. Due to the market perception of timber in construction, CLT elements were also clad and wrapped in fire-rated material. As a reflection of the internal structure of the building, exposed timber elements in a series of Glulam columns support large glazing elements to the main entry lobby.

Key to the successful delivery of this project was early client education, enthusiasm and commitment, specialist consultant input relating to the construction methodology, and a capable builder. Jackson Teece, together with TDA and Wood Solutions organised a study tour to Austria and Switzerland with the client, builder and TTW structural engineers. This deepened the team's understanding of timber engineering, fabrication and construction technologies and as a result, has increased the prominence of this sustainable construction methodology in Australia.



Images: Brett Boardman
www.brettboardman.com

WHAT SETS THIS PROJECT APART FROM OTHER RECENTLY COMPLETED MASS TIMBER BUILDINGS IS THE INCREASED FOCUS ON ARCHITECTURAL EXPRESSION AND FUNCTIONAL PLANNING





ENERGY EFFICIENT DESIGN HAS BEEN FUNDAMENTAL THROUGHOUT THE PROJECT'S DEVELOPMENT

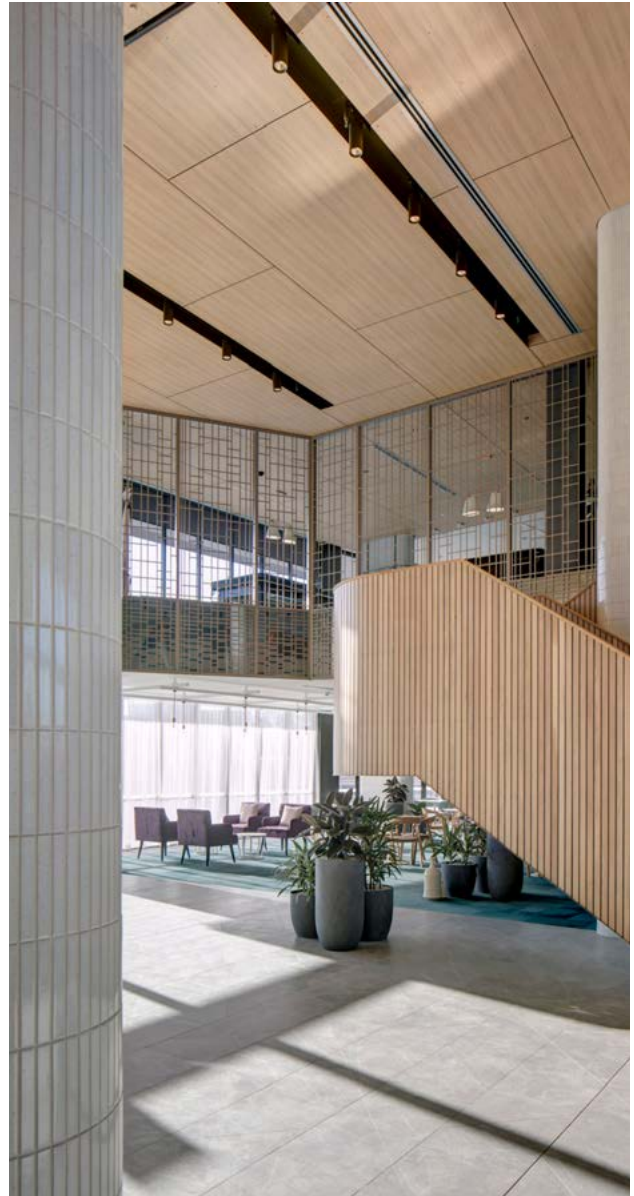
The raw material was sourced through BinderHolz in Austria, a CLT provider whose production sites meet and are certified under strict PEFC standards. Their no-waste principle during fabrication means that 100% of every logged tree is used. Production by-products such as bark, cut-off pieces, wood chips, sawdust and shavings are processed into biofuels in the form of pellets and briquettes or converted into climate-neutral thermal energy or green electricity. Such highly efficient and streamlined fabrication processes, currently not available in Australia, offset the embodied energy generated through transportation to a large degree.

Energy efficient design has been fundamental throughout the project's development. The staggered arrangement of buildings within the masterplan as well as the building's façade articulation aids natural ventilation by creating different pressure zones along the face.

Zonal control of the mechanical ventilation allows for reduction of energy use. All residential corridors have access to natural light and ventilation, providing air to the units and further reducing the need for mechanical ventilation. Mechanical services have been specifically designed for the additional air tightness achieved in this mass timber building, thus reducing ongoing operational costs for heating and cooling. Continuous carbon storage within the significant volume of mass timber used in the building further reduces its carbon footprint, during its construction and in future operation.

The proposal aspires to raise the bar not only in providing superior amenity to the user, but also spearheading sustainable construction technology through the use of CLT. The advantages of using this product are not only seen in the environmental benefits and speed of construction, but also in the upfront design resolution, ultimately resulting in an improved project outcome and a high quality end product.

www.jacksonteece.com/



World Beating Adhesive Technology For Every Flooring Installation

THE UK'S LEADING MANUFACTURER OF FLOORING ADHESIVES



F. Ball's specialist range of industry leading flooring adhesives provides solutions for every installation - from temperature extremes with the highly innovative Styccobond F49 Hybrid PS to adhesive technology for textile, resilient and wood flooring.

F. Ball has adhesive recommendations for over 5000 floorcoverings from 200 leading floorcovering manufacturers.

F. Ball is renowned for quality, innovation and technical know how.

For videos and indepth technical information visit our website at www.f-ball.co.uk



F. Ball and Co. Ltd.

Tel: 01538 361 633 • email: mail@f-ball.co.uk • web: www.f-ball.co.uk

Cheddleton, Leek, Staffordshire, ST13 7RS, UK



PROJECT SHOWCASE: WEMBLEY PARK

Wembley Park is one of the UK's largest urban regeneration schemes. Situated in the cosmopolitan North West London borough of Brent, it encompasses the iconic Wembley Stadium and SSE Arena at its heart. The exciting development offers a vibrant hub where people want to live, companies want to grow, and neighbourhoods come alive.

HELLO WEMBLEY

The breath-taking £3bn renewal project is led by development firm Quintain, which purchased the plot in 2002 and then achieved outline planning consent for 8.8 million square feet of mixed-use development. Following a successful key supplier agreement, Reynaers has been named as a preferred supplier for window systems across the Wembley Park site. Reynaers will assist on the development of further projects following the triumph of completed Emerald Gardens in 2016 and Alto in 2017.

Wembley Park will provide a total of 7,500 homes in addition to the thriving London Designer Outlet, advanced office and retail facilities, hotels and community spaces bustling with activity.

Mary Kelly-Mannion, Head of Procurement with Quintain comments: "We look to engage with first class suppliers who can offer high quality products which complement the development at Wembley Park. In our selection of Reynaers as a Key Supplier we recognise their strong history in the field of research and development. This history, together with the range and quality of their products,

means that they are an ideal contributor from the early design stages right through to provision of the window and door systems on our projects."

A short 12-minute journey into Central London and just 28 minutes to Canary Wharf, the development is perfect for those wishing to reduce their commute, young professionals looking for a vibrant place to live, or families who wish to be surrounded by green spaces and a wide range of facilities.

CROWD PLEASERS

Since construction began in 2006, Quintain's approach was to create a desirable district filled with amenities before populating the area, creating a welcoming sense of community first and foremost. London Designer Outlet has been ranked amongst the top 10 outlets in Europe with annual footfall at 7.0 million. Visitors to Wembley Park can also enjoy a nine-screen cinema, over 70 shops, restaurants, coffee spots and a children's all-weather play park.

Simon Cray, Consultant Project Manager at Reynaers, has been on board with the Wembley Park project since the initial stages. He says: "Seeing the project progress from pen to paper to the vibrant community that is there today is incredibly rewarding. We have seen this fantastic development grow before our eyes, almost in unison with the fabrication of the buildings, and I think that is what makes this project so special."

The aesthetic of the Wembley Park project has been designed to enhance the skyline and allow residents to view the sweeping boulevards that lend an openness to the development. Reynaers has utilised systems that create a maximum presence of space and natural light, resulting in seamless integration between the indoor and outdoor environments. Throughout the project, making a feature of the iconic Wembley Stadium, as well as facilitating unrivalled views of across the site has been a priority when considering the glazing systems.

Cray continues: "We wanted to create buildings which look just as striking from the outside as they do inside. Working closely with architects has ensured that each building is unique, diverse and innovative in appearance and in functionality. The systems used create a sense of rhythm across the façade of the buildings, in keeping with the community feel, as well as building identity across individual plots."

TIPI

Quintain has utilised the world class development at Wembley Park as an opportunity to revolutionise its business structure, focusing on BtR (Build to Rent) by creating Tipi, a wholly owned residential rental management business. Of the 7,500 homes built, the majority are will be exclusively Build to Rent, managed by Tipi. In London's economic climate, many find the prospects of purchasing a property in the cosmopolitan capital unobtainable, whilst renting can often result in many additional complications such as absent landlords and hefty upfront payments.

Tipi is designed to create a renting community, offering no fees, no deposits, all-inclusive utilities and fully furnished state-of-the-art apartments. Residents can expect stunning social spaces, superfast ultra-fibre broadband, John Lewis furniture and Samsung kitchen appliances. 24-hour concierge teams are on hand, alongside a broader team of dedicated customer service staff.

ALTO

Reynaers has successfully completed the supply of aluminium windows and doors for the Alto development, which offers 120 apartments available to rent through Tipi. Completed to the highest spec, external features include private garden terraces fitted with privacy screens and communal spaces including an elevated private landscaped garden.



Cray explains: "Tipi is showcasing the future of living in large cities. It is not only offering brand-new living space close to the bustle of the Capital, it has created a hub where occupants don't just rent an apartment, but rather they can benefit from an entire lifestyle. Reynaers is proud to be a part of this world-class development by supplying residents with our rigorously tested systems and we can offer them the upmost comfort and security in their luxurious new homes for years to come."

EMERALD GARDENS

The Emerald Gardens development is inspired by London's flourishing garden squares. The plot surrounds almost an acre of private grounds, accommodating 475 apartments spread across a number of buildings.

Cray continues: "From a Project Manager point of view, correctly overseeing the logistics for these projects to ensure each step runs smoothly is the key. The development of the project relies on exact timings and therefore any delays can have huge implications. We have been working closely with our HQs in Duffel and Birmingham to ensure seamless logistics run throughout. A key area of focus from the technical team has been developing acoustic solutions to ensure minimal disruption from the stadium during large events."

As Wembley Park continues to evolve, we are set to see the community flourish. Upcoming development plans include the opening of London's biggest Boxpark in December 2018, which will be host to street food traders offering cuisines from across the globe. Troubadour Wembley Park Theatre, a 2,000 capacity immersive theatre, is also set to open in Wembley Park in 2019.

To discover more about the project visit:

www.quintain.co.uk/

For more information about Tipi apartments visit:

www.tipi.london/

For more information on the Reynaers products used in the completed projects, see below:

Concept System 77 aluminium window:

www.reynaers.co.uk/en-UK/products/cs-77

Concept System 77 aluminium door:

www.reynaers.co.uk/en-UK/products/cs-77-0

Concept Patio 155:

www.reynaers.com/en/products/cp-155-ls

Concept Wall 50:

www.reynaers.com/en/products/cw-50



fortis

PARTITION SYSTEMS

Take a fresh approach to glazing with the innovative Fortis 'One Solution' product range.

The unique design offers slim aluminium profiles to provide a near-flush glazed aesthetic to the Fortis range of Ei30, Ei60 & non-fire rated glass walls & doors.

Fortis Partition Systems bring new meaning to beautiful, contemporary glazing.



Fire Rated
Ei30 & Ei60
Performance



Up to **55dB**
Acoustic
Rating



Single &
Double
Glazed



Flush Glazed
& Framed
Door Sets



Fast Project
Delivery

www.fortispartitions.co.uk
Speak to our design team **0203 7935455**

Fortis Partitions Ltd
West Horndon Ind Est
West Horndon, Essex,
CM13 3XL

Products are protected by Registered Design Act 1949 Certificate 2054500, Patents E1 R GB 2312451, E1 R GB2322663 also protect by Intellectual Property Insurance Certificate No. IPI 3593 Underwritten by Lloyd's London subscribing to Contract No. ALP038/99.

A modern office hallway with glass partitions and doors. The hallway is carpeted with a grey and blue patterned carpet. The glass partitions are clear and frameless, reflecting the overhead lights. The ceiling is white with recessed lighting. The overall atmosphere is clean and professional. The image is overlaid with a dark blue geometric shape on the right side and a green geometric shape at the bottom right.

NEW FOR **2019**

Frameless Fire Rated Glass Partitions & Doors



RENDERPLAS PVC BEADS SUPPORT SUSTAINABLE REGENERATION

Strong and sustainable, Renderplas PVC render beads are creating clean, contemporary details to the rendering of regeneration projects by Cruden Homes in the East End of Glasgow. Hundreds of new homes at Crossbank Drive, Rutherglen and Baron's Vale, Tollcross are part of an ambitious programme to replace the city's 1960s tenements and build brand new, vibrant communities with modern, affordable housing.

In recent years, Glasgow's East End has seen huge levels of investment and regeneration, which has transformed the area. New housing developments are offering high-quality homes based on low energy design principles and use sustainable materials, which fits well with Renderplas's eco-friendly ethos. All Renderplas beads are made from recycled exterior grade PVC that is both impact resistant and UV stable.

Glasgow-based G Barton Plastering Ltd has worked on many of the city's regeneration projects, including Crossbank Drive and Baron's Vale. The company's expert applicators specialise in applying render for all types of projects. Managing Director, Garry Barton, says house builders need to know they can rely on renderers that will do an excellent job with the right materials, a minimum of fuss and with maximum efficiency. "And we're the same," he says. "We choose Renderplas PVC beads every time because we need to know that they'll turn up exactly when we need them, they'll perform perfectly and will stay maintenance-free for the life of the render, reducing the need for costly maintenance."

Renderplas corner, bellcast, stop and movement joint beads have all been used on these important housing developments. They complement the new homes' smooth, bright rendered facades and provide a perfect, long-lasting finish guaranteed not to stain or corrode over time like galvanised steel beads.

Garry Barton and his team are delighted to be playing such a significant part in Glasgow's urban regeneration using products that, like the new communities, will stand the test of time for current and future generations. Summing up, he says: "Award-winning companies like Cruden Homes demand the best products at a competitive cost and are committed to building energy-efficient homes. Renderplas beads meet all these requirements, they're cost-effective, fit for purpose and as a PVC product they eliminate cold bridges in external walls that would be caused by using steel beads, so they tick all the right boxes when it comes to thermal efficiency too."

Renderplas Managing Director, Daniel Leedham-Green further comments "When we designed the UK's first PVC beads in 1990 we had a vision of sustainably built buildings, using modern energy efficient materials that could transform the lives of entire communities. Knowing that companies like Garry's are out there doing such a great job in making that happen is very encouraging."

For more information visit www.renderplas.co.uk

LORD-LIEUTENANT PRESENTS ANCON WITH THIRD QUEEN'S AWARD FOR ENTERPRISE

ANCON has officially received the 2018 Queen's Award for Enterprise from the Lord-Lieutenant of South Yorkshire, Mr Andrew Coombe, on behalf of Her Majesty the Queen.



This is the third time the company has been honoured in this prestigious award scheme that acknowledges outstanding achievements by UK businesses. Ancon's 2018 Innovation award follows its Queen's Awards for International Trade in 2015 and Innovation in 2012.

After a tour of the recently-extended Sheffield head office and main UK manufacturing operations, Mr Coombe said, "It gives me great pleasure to present this award to Ancon. I have been so impressed with what I have seen here today. It is a real team effort."

The award was received on behalf of Ancon by company director Peter McDermott at a special ceremony attended by 36 long-serving employees representing all areas of the business from sales and marketing to production and accounts.

For more information call 0114 275 5224 or visit www.ancon.co.uk



DIGITAL MAPPING & DATA

Inaccurate, out of date, unlicensed or incorrectly displayed plans are considered one of the most common causes of a planning application being rejected. Using the latest mapping and environmental data, ahead of a new building or redevelopment project, minimises delays resulting from location-related queries.

Promap, from Landmark Information, is used by thousands of property professionals to access land data, including digital maps, aerial photography, height data and 3D models, in a range of CAD-ready formats.

Talking about how Promap supports his consultancy, Ian Pick, Principal Planning Consultant at Ian Pick Associates said: "We prepare and submit the often complex applications and help guide clients through the various stages of obtaining planning permission. At the outset of every client instruction, we access digital OS maps from Promap. It is important that we are working with the latest maps and have always been able to get what we need through Promap."

Tel: 0844 844 9960
www.promap.co.uk

SIOO:X
WOOD PROTECTION

Working with nature

Sioo:x are leaders in wood protection using silicate technology.

We provide a highly effective proven system to protect wood of all types. It gives long life and a beautiful natural surface with even colouration and is friendly to people and the environment. An example of a Sioo:x project is the Water House in Ångelholm, Sweden. The wooden panels are made of spruce that has been treated with Sioo:x light grey pigment.

Sioo Wood Protection AB
www.sioox.org.uk



Photo: Terje Arntsen



Photo: Aaron Pocock



Photo: Aedas



THE 2018 ARCHITECTURE MASTERPRIZE WINNERS ANNOUNCED

THE ARCHITECTURE MASTERPRIZE

The Architecture MasterPrize (formerly AAP), one of the most comprehensive architecture award programs in the world, has announced this year's winners: the most innovative, creative and inspiring architectural projects from all over the globe.

Winners were selected from 68 countries in categories across the disciplines of architecture, interior design, and landscape architecture.

The AMP jury has selected the following three projects as the Design of the Year prize winners of The Architecture MasterPrize2018 and to be awarded the AMP Trophy.

- Architectural Design Of The Year: American Copper Buildings by Shop Architects
- Interior Design Of The Year: Tokyo Tower Top Deck by Kaz Shirane Studio
- Landscape Design of The Year: The Sun Shed Renovation Practiceby Mix Architecture

In addition to the top three "Design of the Year" awards, winners from around the world have been selected across 41 categories.

These include:

- Kanda Terrace by Key Operation Architects in Commercial Architecture
- Kult – Kulturhistorisches Zentrum Westmünsterland by Pool Leber Architekten in Cultural Architecture
- Théodore Gouvy Theater by Dominique Coulon & Associés in Cultural Architecture
- Copenhagen International School – Nordhavn by C.F. Møller Architects in Educational Architecture
- Monash University Learning and Teaching Building by John Wardle Architects in Educational Architecture
- Day Care Center For People With Alzheimer's Disease by studioVRA in Healthcare Architecture



THE AMP JURY HAS SELECTED THE FOLLOWING THREE PROJECTS AS THE DESIGN OF THE YEAR PRIZE WINNERS OF THE ARCHITECTURE MASTERPRIZE 2018 AND TO BE AWARDED THE AMP TROPHY.

Photo: Nacása & Partners



BESIDES PROFESSIONAL WINNERS, STUDENTS WERE ALSO SELECTED AS WINNERS IN THEIR OWN CATEGORIES.

- Freycinet Lodge Coastal Pavilions by Liminal Architecture in Hospitality Architecture
- European Parliament by Jaspers-Eyers Architects in Institutional Architecture
- Salesforce Transit Center by Pelli Clarke Pelli Architects in Transportation Architecture
- Noso by Faci Leboreiro Arquitectura in Commercial Interior Design
- Lascaux International Centre for Cave Art by Casson Mannin in Exhibitions
- Setsugekkka Japanese Cuisine by Shanghai Hip-pop Architectural Decoration Design in Other Interior Design
- Roemer Plaza, Suffolk University by Klopfer Martin Design Group in Educational Landscape Design
- Bamboo Gateway by West-Line Studio in Public Landscape Design

Besides professional winners, students were also selected as winners in their own categories.

Winners will be invited to the bi-annual Winners Event taking place in 2019 and will enjoy extensive publicity showcasing their designs to a worldwide audience throughout the next year, as well as have their designs featured in the globally distributed AMP Book of Architecture.

architectureprize.com



Photo: Andrey Avdeenko



Photo: Eugeni Pons



SCHÖCK WRAPPED PARAPETS SOLUTION FOR GRADE 1 LISTED REBUILD

At the Regent's Park end of London's Portland Place, passers-by have been astonished to discover that the iconic Park Crescent West, a Grade 1 listed residential Regency terrace built by architect John Nash, is no more. However, all is not as it seems. The original Nash terrace, completed in 1821, was badly damaged during the Second World War and restored in the 1960s. The work though was considered flawed and not true to the original. As a result this is now a rare case where the demolition of the Grade 1 listed terrace 'and its replacement with a more scholarly replica would preserve and enhance rather than obliterate its significance'. Offering 76 luxury apartments, with nine mews houses at the rear and renamed Regent's Crescent, the project will see the terrace rebuilt with new brickwork and stucco to represent the original Nash design.

AVOIDANCE OF THERMAL BRIDGING IS CRITICAL

The construction comprises a reinforced concrete frame with concrete columns, horizontal flat slabs and a lightweight steel roof. The project is to a very high specification and great attention has been paid to avoiding the risk of thermal bridging problems. Prevention along the parapets is critical, because as with balconies, parapets can allow conductive materials to transfer energy through the thermal barrier. Often the method of insulating parapets and parapet walls is to wrap the perimeter with an insulation barrier. However, the Schöck Isokorb used here offers a solution that is both more cost-effective and more thermally efficient than conventional wrapped parapets. Its 120mm insulation thickness results in low psi-values and therefore significantly reduces heat loss – and there is no wrapping required. The Isokorb solution does not require maintenance and there is no risk of expensive restoration due to waterproofing problems. It also allows greater freedom of design and there is no risk of any additional thermal bridging through balustrade fixings.

A load-bearing modular thermal insulation element from the Isokorb range is also utilised within the lightweight steel roof



construction. This is for connecting cantilevered steel girders to steel structures. It can be used to minimise the risk of thermal bridging in new construction or renovation projects involving penetrating support structures such as canopy roofs, frame system crossbars or balconies.

TOTALLY VERIFIABLE PERFORMANCE

The Schöck product types used at Regent's Crescent are for wrapped parapets and steel-to-steel connectivity, but the comprehensive Isokorb range also offers solutions for concrete-to-steel situations and concrete-to-concrete. The range complies with the Government Standard Assessment Procedure, SAP 2012, concerning CO2 emissions from buildings and respectively heat losses through non-repeating thermal bridges. Products meet full compliance with the relevant UK building regulations, have NHBC approval and offer LABC Registration. There is also the security of independent BBA Certification.

Contact Schöck on 01865 290 890; or visit the website at www.schoeck.co.uk for a free copy of the Schöck Thermal Bridging Guide; the Schöck Specifiers Guide and to view the full range of downloadable software.



BEST IN CREATIVE

3D Visuals & Graphics Studio

At Best in Creative our skilled graphic & 3D artists offer conceptual visuals, images & graphic design. From interior designers to architects, property developers to shopfitters, we aim to help all companies realise their designs and ideas.

3D work is crucial for this. Clients want to see their vision come to life, whilst also having the option to experiment before committing. With a 3D visual in place, clients can easily change colours and play with various finishes, sizes and textures, giving them a greater sense of engagement with the creative process.

At Best In Creative we want to reach out to all networks that could utilise our services. We offer our competitively priced visuals and graphic design, as well as a free consultation to discuss your needs. We can visit your office, or arrange a video conference at your convenience. We feel that when it comes to creative services, a face-to-face meeting where ideas can be pooled, sketched, displayed and discussed is the fastest (and most cost effective!) way to get what you want.

Following a change of premises, our new and improved studio has ample space to accommodate our continued growth. Excitingly, we are now in the process of re-branding and will be launching our new and improved websites from the middle of November. Launch dates will be confirmed via social media - follow us to keep up to date!



Our original and long-standing company Best In Design Ltd - founded in 2011 - has a good, solid clientele that utilises our expertise in engineering drawings and product design. Creating small or large scale work, from designing shop fit outs to ad-hoc engineering work, Best in Design offer the technical side to designs.

Not sure you can use us? Contact us - we relish a challenge and would love to talk to you about your brief. Whether you wish to create a new brand identity or update an existing one, produce unique and engaging social media posts or need to outsource a catalogue, send it our way and our years of experience will see your project through to completion.

Both our graphical department and our 3D studio are available for everyone, small or large projects and can be used as you need us. .

...Based in Wombourne, supplying everyone.

For further information please contact victoria.wellings@bestincreative.co.uk or 01902 902891.

www.bestincreative.co.uk

RENDERPLAS PVC BEADS DO LIKE TO BE BESIDE THE SEASIDE

A coastal environment can be one of the harshest for a building to withstand so when a Grade 2 listed, Victorian kiosk was due to be relocated and renovated on the Brighton seafront, Renderplas PVC beads were immediately sourced for the internal plasterwork.

In 2015 Brighton & Hove City Council started work on the long and difficult process of essential maintenance work to save the Brighton seafront road which, at the time, was in danger of collapse. As part of the project the wooden framed Shelter Hall Kiosk, dating back to the 1880s, was painstakingly dismantled and relocated to its new home on the Upper Prom, 200 meters away from its original location.

Instrumental to the successful completion of this process was the West Sussex based construction company, Harrity Building and Construction Ltd. Owner of the company, Mr. Chris Harrity, who has many years' experience tackling such complex projects, explained that an important part of the reconstruction was the internal plastering. Although metal beads were originally specified Chris insisted that Renderplas PVC beads were the right choice for the job.

"Though the beads were used internally, we still felt it necessary to use Renderplas PVC beads rather than galvanised or stainless as we could be 100% certain that they would not rust or bleed through the plaster."

The kiosk will need to withstand many torrential storms, long winters and harsh atmospheric conditions as Chris Harrity comments "the newly located kiosk will have to endure high salt levels. Renderplas beads give us peace of mind that there will be no need for costly ongoing remedial repairs."

The British and European Standard for the design and application of external render (BS EN 13914-1:2016) stipulates that only PVC

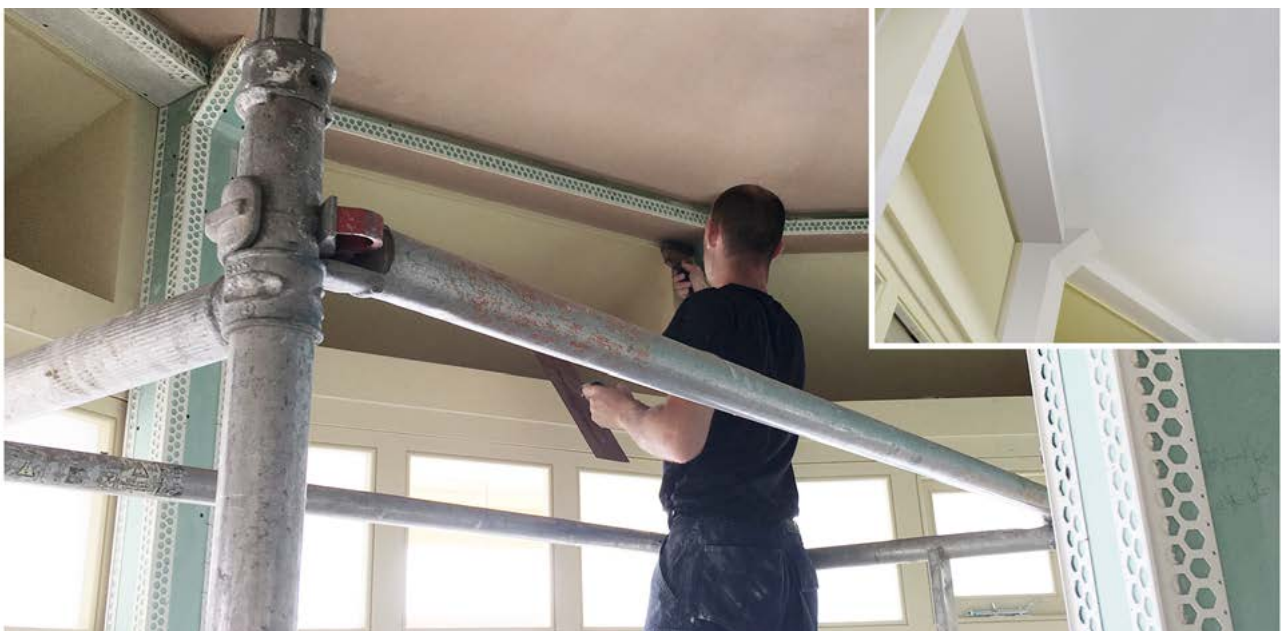


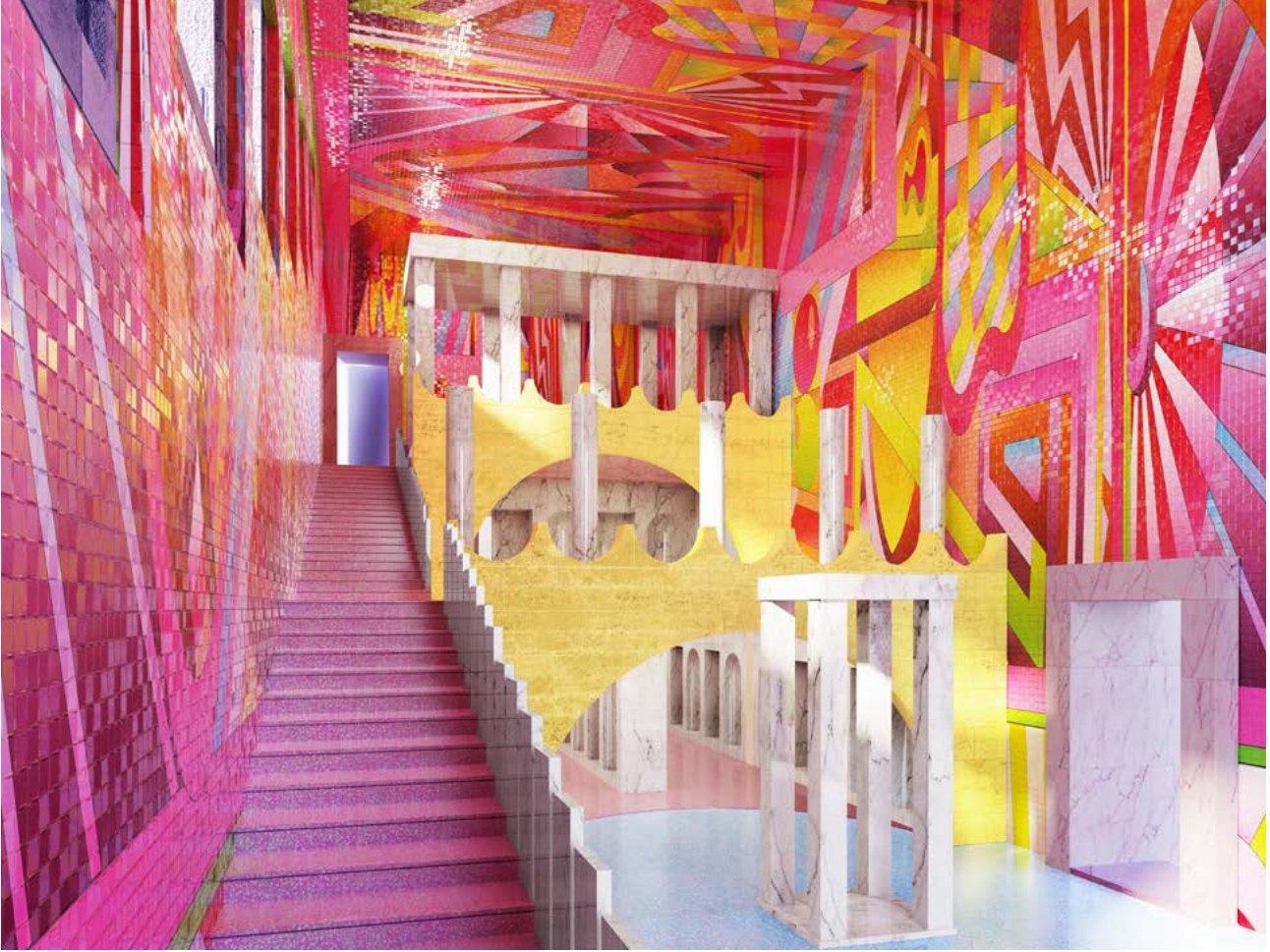
beads and stainless steel beads can be used in applications of high atmospheric moisture and background salt. Renderplas beads meet this standard and are a fraction of the price of stainless steel beads, they are the ideal choice for all coastal building projects.

Renderplas white corner and stop beads, used on the project, are made from cost-effective 100% recycled, exterior grade, impact resistant, UV stable PVC, and are guaranteed for 25 years, meaning no costly repair bills or returns to site for Brighton & Hove City Council or Harrity Building and Construction Ltd.

Renderplas Managing Director, Daniel Leedham-Green is always proud to be associated with the restoration and preservation of the country's building heritage; "this Victorian seaside kiosk is synonymous with the English seaside and childhood holidays. It is heartwarming to know that Renderplas beads have helped ensure its survival for many future generations to enjoy."

For more information visit www.renderplas.co.uk





Project by Adam Nathaniel Furman

ARCHITECT@WORK MOVES TO OLD TRUMAN BREWERY FOR 2019 SHOW

∴ ARCHITECT@WORK

ARCHITECT@WORK will move to Old Truman Brewery in Shoreditch for the seventh London edition 30th to 31st January 2019. There is free admission for registered trade visitors and complimentary catering throughout, encouraging networking and downtime as well as deal-making opportunities.

The theme for ARCHITECT@WORK UK 2019 is future-proof. In an age when change is measured in seconds and sustainability is a necessity not an extra, architects and designers are increasingly tasked with proposing projects that have longevity. Show features include an exhibition by MaterialDriven and art provided by Tichelaar.

Leading international architectural suppliers will showcase over 200 products and offer the latest innovations. All exhibitors go through a rigorous selection process, overseen by an external judging panel.

TALKS PROGRAMME

Wednesday 30 January

15:00 – Modern Methods

Offsite construction and prefabrication are bringing about a revolution. A series of high-profile case studies will demonstrate how modern construction methods are changing design. Speakers include Hazel Rounding, shedKM; Dave Lomax, Waugh Thistleton; Kevin Gray, BeFirst; and Mark Rintoul, Rogers Stirk Harbour + Partners.

16:15 – Sarah Wigglesworth in conversation

Architect Sarah Wiggleworth has been championing sustainable design for decades and has created projects that foster social wellbeing, while retaining her environmental credentials. She will reveal the key projects that have shaped the practice and discuss upcoming work.

17:30 – Back to the future

The truly sustainable approach for the city is one that renovates and reimagines rather than demolishing the old to build the new. The panel will look at a range of case studies, from homes to offices, galleries to exhibition centres. Speakers include Catarina Kohut, Jonathan Tuckey Design; Trevor Morris, SPPARC; Nicola Rutt, Hawkins\Brown; and industrial designer Alexander Lervik.

Thursday 31 January

13:00 – Eco is not a dirty word

Sustainability is integral to the future but few companies are creating truly innovative projects. The panel will explain the power of green design, with small boutique projects, mega structures and sustainable strategies for healthy city development. Speakers include Jerry Tate, Tate Harmer; Cany Ash, Ash Sakula; and Piers Taylor, Invisible Studio.

16:15 – Zero carbon cities

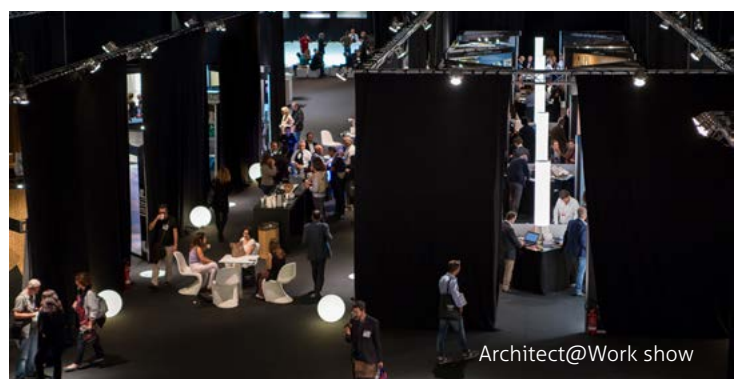
The technology to make our cities carbon neutral exists but we need good design coupled with developers and local government to make it a reality. This panel will prove that zero carbon isn't science fiction, it's happening and it's achievable. Speakers include Linda Thiel, White Arkitekter and Bill Dunster, ZEDfactory.

17:30 – Brave new world

Cutting-edge technologies and radical forms encourage us to look ahead but in recent years restrained and rational projects have become fashionable. This talk features the brave souls creating the places and spaces of the future including Aleksa Rizova, ALEKSA studio; Adam Nathaniel Furman; Dan Blaker, Nulty; and Stefano Dal Piva, ACME.

ARCHITECT@WORK UK runs 1pm – 8pm, 30th – 31st January 2019 at Old Truman Brewery.

Register at www.architect-at-work.co.uk using code 1470.



Project by Invisible Studio

IN AN AGE WHEN CHANGE IS MEASURED IN SECONDS AND SUSTAINABILITY IS A NECESSITY NOT AN EXTRA, ARCHITECTS AND DESIGNERS ARE INCREASINGLY TASKED WITH PROPOSING PROJECTS THAT HAVE LONGEVITY.

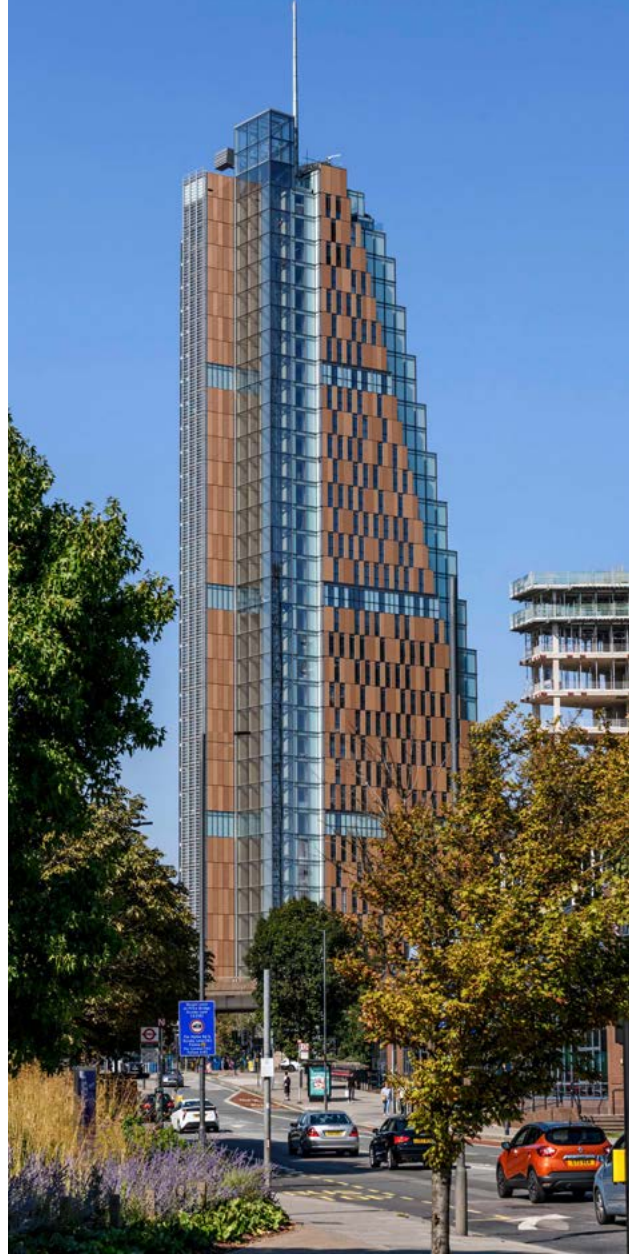


PREFABRICATED HIGH-CLASS FACADE ELEMENTS MADE IN GERMANY

Prefabrication is and always has been a key issue in construction on account of the advantages associated with it: components can be manufactured under ideal conditions independent of weather and then mounted or assembled efficiently so as to save time and money. For example this way, it is now possible to mount prefabricated houses within a single day. Prefabricated elements also play a key role in the safety-relevant area of facades. Apart from the goal of saving time and money as referred to above, there is yet another advantage in densely-populated cities: in many cases, there simply is not enough space to store semi-finished products on construction sites in terms of safety and logistics. A perfect example of where these aspects applied was realized in London in 2018 and involved competent collaboration by the renowned German companies Lindner Fassaden GmbH (Arnstorf) and Agrob Buchtal GmbH (Schwarzenfeld).

A PORTRAIT OF THE BUILDING OWNER

The "Imperial College of Science, Technology and Medicine" (Imperial College) is a university and technical college of applied sciences in London. Founded in 1907, it is among the leading international institutions of its kind. In 2013, the facility acquired a site spanning 46,500 square metres in the London suburb of White City, with plans to erect a building housing research, teaching, companies, and apartments. This saw the entire campus area double to 93,000 square metres. These impressive figures are an indication of the sheer size and significance of Imperial College. Since then, lots has happened on the new site referred to as White City Campus (aka Technology Campus): the "Translation & Innovation Hub" opened in 2016; 2017 saw the "Invention Rooms" go into operation and ground was broken for the "Michael Uren Biomedical Engineering Research Hub"; the "Molecular Sciences Research Hub" (MSRH) opened in 2018. The so-called Block F was also built during this period. Completed in 2018, it accommodates around 200 apartments for key college personnel.



BLOCK F: HIGH-END FACADE ELEMENTS

This formulation certainly has a double meaning: it relates to the high technical demands and the fact that the residential tower is approximately 140 metres high. With its 35 floors and its distinctive sculptural architecture, it is a firm landmark of West London. The building shell comprises about 2,400 prefabricated facade elements clad with glass, ceramics or a combination of these two materials. The elements were realised by a successful interplay of competencies exhibited by the two renowned specialists Lindner Fassaden GmbH, D-Arnstorf (in co-operation with its local partner Lindner Facades, London) and Agrob Buchtal GmbH, D-Schwarzenfeld (in co-operation with its local partner EH Smith, GB-Solihull and GB-Brasted).

DETAILS ON THE ELEMENTS (PART OF LINDNER FASSADEN GMBH)

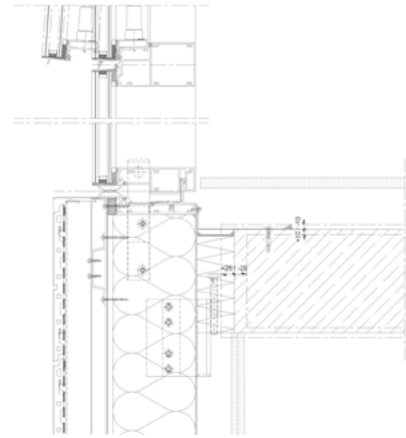
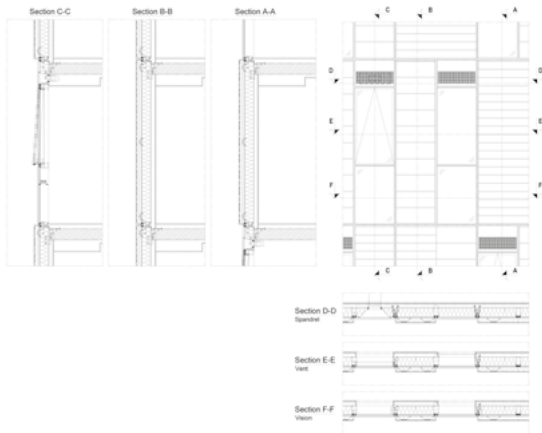
The warm facade largely comprises elements which are 1.5 metres wide and 3.25 metres high, whereby the Lindner CW85 system permitted a certain level of standardisation and therefore improved feasibility. At the same time, the building's distinctive silhouette also demanded individual special solutions. One example is represented by the staggered eastern side where every second floor forms a step offering patios for its residents. Furthermore steel balconies were created elsewhere. This required the use of thermally separated "wing elements" 2.25 metres wide which not only clad the cold area but also serve as wind and visual protection. The southwest side is marked by another typical feature in the form of an elevator shaft which is visible from afar and where all-glass elements measuring 3.05 by 3.25 metres ensure optimum transparency.



All elements were manufactured by Lindner Fassaden GmbH in Arnstorf in Lower Bavaria. Before that, the elements and composite system were inspected in detail in terms of the requisite properties such as sealing against air and water or noise protection. The standardised versions were then manufactured within the framework of sophisticated line production while special versions such as wing or corner elements were manufactured in a so-called island production process. In optimising the material flow, the distinctive experience offered by the company in areas of lean production and the Kanban system paid off in practice.

DETAILS ON THE CERAMIC CLADDING (PART OF AGROB BUCHTAL)

The architects PLP Architecture, London, desired a salmon-coloured terracotta shade in three differentiated nuances and two surface finishes (smooth and grooved) for the ceramic-clad elements.



Agrob Buchtal complied with these explicit specifications using specially-manufactured facade tiles in three lengths of up to almost 150 cm and a height of 29.7 cm (a perfect fit for the element grid) as well as other special formats - yet more evidence of the fact that tailored project-specific solutions are among the proven strengths of this architectural ceramics brand. This is also shown by some further aspects: in line with the specifications, the tiles feature a mesh glued to the back which serves as fall protection in the event of intentional mechanical damage. To secure the facade ceramics to the elements manufactured by Lindner, a special variant of the "Omega" profile for the modern KeraTwin K20 fastening system was developed and used. One relevant issue in terms of the statics of a building concerns the weight of the facade cladding. Agrob Buchtal scores well with around 32 kg per square metre as this value is comparably low for a ceramic variant but does not compromise stability: the thickness of the tiles is tared exactly, and supplemented by high-quality raw materials as well as special expertise in the areas of moulding, drying and firing.

SOPHISTICATED LOGISTICS

Prefabrication does not end once the products leave the plant but is in fact a comprehensive process as indicated by this project. The prefabricated components were loaded in accordance with a special system onto steel pallets at the Lindner Fassaden GmbH plant in Arnstorf, whereby a truck load comprised 18 standard elements. For around 2,400 elements, this corresponds with well over 100 trucks which needed to safeguard the carefully timed material flow as there were no possibilities to store components on a large scale on site in densely-populated London. Accordingly, Lindner Facades Ltd. co-ordinated the sophisticated site logistics: on arrival, the pallets were forklifted from the truck and transported to a so-called buffer area where the elements were inspected and cleaned before being transferred to the building's designated safety zone. From there, the prefabricated components were lifted by crane into a vertical position, hoisted to their respective spots on one of the 35 floors, and fastened by qualified fitters from RF Fixing Ltd.

CONCLUSION

Block F on the new White City Campus of Imperial College is a perfect example of the advantages offered by prefabricated facade elements. Smooth co-operation by everyone involved literally gave rise to an outstanding and widely-visible result with an architectural brilliance and power.

www.agrob-buchtal.de
www.ehsmithfacades.co.uk
www.lindner-group.com
www.plparchitecture.com



The future of Urban Infrastructure

Introducing Futurebuild 2019

The Urban Infrastructure Hub at Futurebuild 2019 will cover all aspects of urban infrastructure defined as “including everything that is not a building”. It will look at green, blue, grey and social and economic infrastructure.

In addition to the exhibitor product launches taking place in this Hub, you will also find innovative features, such as the Refill Station and City Walk, where you will be able to view a showcase of natural products. A dedicated seminar programme, sponsored by ACO, will cover everything around infrastructure, water,

urban greening, the public realm and wellbeing, giving industry professionals the opportunity to explore some of the challenges facing the built environment.

www.futurebuild.co.uk/urban-infrastructure-hub

Register for free today

www.futurebuild.co.uk/register



@FuturebuildNow



/FuturebuildNow



/FuturebuildNow



/FuturebuildNow



FuturebuildNow

In partnership with





FUTUREBUILD 2019: THE CHALLENGE FOR ARCHITECTS

futurebuild

05-07 March 2019 / ExCeL, London

Futurebuild is the leading built environment event for architects and specifiers to meet and learn, be inspired and do business. Taking place from 05-07 March 2019, the event will focus on exploring and tackling the biggest challenges impacting the industry, and will be a unique destination for visitors to gain unrivalled insight and hands-on experience around the latest innovations, products and materials in order to address these challenges.

Developed in conjunction with renowned, industry leading partners, Futurebuild will provide over 500 hours of structured learning across an inspiring conference programme and 11 seminar streams – all completely free and CPD accredited.

Time For Action – Meeting challenges and making commitments
Central to Futurebuild is the ecobuild conference, which will inspire visitors to take action on the most pressing challenges through insights and knowledge-sharing from leading experts. With an overarching theme of 'Time For Action', the conference sessions will be collaborative forums where visitors will develop plans for implementing change and proposing action for a more sustainable future.



Futurebuild will be the platform where 13 challenges are tackled, including how to achieve a truly circular economy, how to put health and wellbeing at the centre of design, and how the industry can overcome the housing crisis.

FUTURE TRENDS, PRODUCTS AND MATERIALS

In addition, over 500 market-leading brands and organisations from across the globe – including RIBA, Smart Systems and Nudura will be showcasing their latest innovations and contributing to the extensive knowledge programme. To ensure visitors gain a truly immersive and in-depth experience across all areas of the industry, these exhibitors will be hosted across six curated Hubs: Urban Infrastructure, Buildings, Interiors, Materials, Offsite and Energy.

Each Hub will include unique feature attractions and a concentrated education programme hosted by a relevant sector-specific authority. The Hubs will also host a variety of new and expanded pavilions and attractions, including: the BEIS Innovation Zone, the City Walk, Made In Britain, Vision @ Futurebuild, the Association of Decentralised Energy (ADE) pavilion, the Home of the Future by Tufeco, the RIBA Stand designed by Gundry + Ducker, and many more.

NEW AND EXCLUSIVE FEATURES

Futurebuild will be bolstered by a range of new and exclusive partnerships and features.

As an official UK Government Innovation Partner, Futurebuild will be hosting the Innovation Zone with the Department for Business, Energy & Industrial Strategy (BEIS) and Innovate UK.

At the Zone, BEIS will be showcasing the work of the Energy Innovation Programme and demonstrating how it is delivering the Clean Growth Strategy. Focusing on true innovation, it will provide a platform for investment and knowledge exchange across three areas: a dedicated three-day seminar series; an exhibition featuring innovative companies BEIS and Innovative UK has provided funding to; and a 'Business Bar' in collaboration with the Knowledge Transfer Network – providing 1-to-1 advice and support on accessing funding.

New for 2019 is the Knowledge Forum – a dedicated area where industry-leading partners, academia and professional bodies will offer a comprehensive look at the biggest issues facing the built environment. Hosting CPD workshops, the Knowledge Forum will provide useful solutions and guidance for visitors to take back to the office.

The Waste Zone will return with new and expanded features, including the new Circular Economy Hub. Curated by architect, academic and author Duncan Baker-Brown, the area will take a unique beach hut format and showcase how waste can be a valuable industry resource.

In an exclusive sector first, Futurebuild is also partnering with GIGA – a leading organisation driving greater accessibility of international building product certifications via cloud software. This will come to life through a new Futurebuild product directory and a dedicated new area of the event – The mindful MATERIALS Certification Pavilion.

To register, visit: www.futurebuild.co.uk

FUTUREBUILD WILL PROVIDE OVER 500 HOURS OF STRUCTURED LEARNING ACROSS AN INSPIRING CONFERENCE PROGRAMME AND 11 SEMINAR STREAMS – ALL COMPLETELY FREE AND CPD ACCREDITED.





FUTUREBUILD WILL BE HELD AT EXCEL LONDON

London is one of the world's busiest international business hubs and the most accessible city in the world. ExCeL London can be reached easily from all over London, the UK and internationally as it is situated just 20 minutes from the City with a wide range of low-cost rail and air links to global cities.

North Hall
 ExCeL London
 One Western Gateway
 Royal Victoria Dock
 London
 E16 1XL

DLR, Underground & Rail
 ExCeL London has two DLR stations on its campus and is in Zone 3. Alight at Custom House station for the West Entrance and the quickest access to Futurebuild, held in the North Hall via Entrances 1-6. Trains are fast and frequent with 12 trains running every hour.

All DLR trains travelling towards Beckton/Gallions Reach will take passengers to the ExCeL stations.

Travelling to the ExCeL from all major overground stations in London such as Euston, Kings Cross, Paddington, Victoria and Waterloo takes approximately 40 minutes or less and can be done so via the underground and the DLR.

If travelling via the underground, the Jubilee line will take you to Canning town, where you need to change and board a DLR train.

TFL and National Rail Journey Planner

Driving

If driving to the ExCeL please follow signs for Royal Docks, City Airport and then ExCeL London. Please enter the post code E16 1XL into your satellite navigation device for the West Entrance. You should book your parking in advance using the ExCeL's online system and print your ticket off before arrival.

Cable car and River

The Emirates Airline Cable Car connects ExCeL London to the O2 and North Greenwich tube station with a flight time of approximately 10 minutes.

All exhibitors and visitors to shows at ExCeL can use the cable car for just £2.50 single fare - to redeem this exclusive discount, all you need to do is show a confirmation email/ticket etc to the staff at the Emirates Airline terminals.

If you would like to travel by boat to take in the scenery from the River Thames, you can do so by alighting at North Greenwich Pier for the O2 and getting the cable car to the venue campus.

NOISE MITIGATION AGAINST HS2

ENABLING WORKS AT 30 EUSTON SQUARE

30 Euston Square is a spectacular Grade II* Listed building dating back to 1906. In 2010 it was acquired by the Royal College of General Practitioners (RCGP), who took up the challenge of refurbishing and upgrading its spaces.

Selectaglaze has a long standing relationship with RCGP and has carried out a number of installations to different areas of the building over the years.

The relationship began in 2010, when the new owners decided it was essential to undertake works to decrease noise ingress on the façade overlooking the Euston Road, notably the State Room on the top floor. To make it more attractive for the users of the space, it was decided to treat the windows and roof lights with secondary glazing. On a few of the lower floors there are study rooms where GP members can stay when on College business. Secondary glazing has been installed to stop noise from passing traffic. In 2012/2013, Selectaglaze returned to install secondary glazing to other areas of the building, which were either used for RCGP staff or as tenanted office areas. These were overlooking Euston Square and a few of the study bedrooms towards the rear of the building.

The local area has transformed dramatically in recent years, with Euston Station set to become the end point of the new HS2 high speed rail link. In 2016 Selectaglaze was approached to install secondary glazing to areas of the RCGP building on Stephenson Way and Euston Street to help combat noise from the building work.



Established in 1966 and granted a Royal Warrant in 2004, Selectaglaze is the prominent specialist in the design, manufacture and installation of secondary glazing. Selectaglaze will be showcasing a variety of secondary glazing products at Futurebuild from the 5th – 7th March, ExCel London at Stand D21.

For further information, please contact Selectaglaze on 01727 837271 / email: enquiries@selectaglaze.co.uk or visit: www.selectaglaze.co.uk

MEDIEVAL HOUSEHOLD HIDING ANCIENT PRIORY

RUINS ENRICHED WITH SECONDARY GLAZING

The Priory is a stunning Grade II Listed residence in the village of Blythburgh, a settlement of probable Saxon origin. The property itself was constructed in a number of phases. A medieval chapel sits at the west side, with a 17th century farmhouse, a rebuilt 15th century timber framed property and early 20th century additions making up the remainder of the house. The Priory shares its grounds with the ruins of a 12th century Augustine Priory which has been the subject of an archaeological investigation by Channel 4's Time Team as well as subsequent digs which confirmed the existence of a Christian church on the site from c.700 AD.



The primary windows are a mixture of Georgian, leaded outward opening casements and fixed lights within timber or stone frames. Due to the Listed status of the building, these thermally inefficient windows could not be replaced. However, current owner Chiara Saunders found a solution in Selectaglaze secondary glazing.

Selectaglaze installed 15 units comprising of the Series 10 - 2 and 3 pane horizontal sliding units. The Chapel windows were treated with white Series 45 single side hung casements with a gothic arch to match the opening. The Saunders family were so impressed with the quality of the secondary glazing that a further 16 units were installed – a combination of the Series 10 - 2 and 3 pane horizontal sliding units.

"Selectaglaze has helped make this possible and we were grateful to be draught free when the Beast from the East hit us earlier this year." Chiara Saunders

Founded in 1966, Royal Warrant Holder Selectaglaze has attained a reputation as a leading secondary glazing specialist. Selectaglaze will be showcasing a range of secondary glazing products at The Listed Property Show from the 9th – 10th February, Olympia London at Stand B22.

Contact Selectaglaze on 01727 837271 / e mail: enquiries@selectaglaze.co.uk or visit: www.selectaglaze.co.uk



GROSVENOR AVENUE

FOURTH_SPACE

Grosvenor Avenue by fourth_space began as a project in 2014 with the architect suggesting to an independent developer that they could deliver a design-led project that challenged the bog-standard approach to materials and finishes associated with small developments. Set on the infill site once occupied by poor quality two-storey semi-detached houses, the building was conceived as a sensitive re-working of the architecture found in the European townhouse typology, adapted to sit within a large Victorian Islington terrace.

Though embroiled in politicized planning issues that delayed construction, the 10-unit scheme started on site in early 2017 and was completed in June 2018. The result is a high-quality infill building that sits calmly within its suburban surrounding and offers its occupants generous space with quality materials inside.

Influenced by the leafy character and dappled light of the Islington street, fourth_space chose a facade that responds to this local ambience. The light brickwork contrasts with the adjacent neighboring properties and is modulated by a darker central glazed brick section that reflects the sunlight as it passes through the trees, creating a subtle shimmering effect and a sense of movement on what could have otherwise been a static facade.

At the rear elevation of the property, fourth_space constructed a 128sqm living wall that covers three storeys of the property. This vertical garden adds to the greenery of the tree filled Grosvenor Avenue, reducing the negative visual impact on neighbours and enhances the long-term biodiversity and sustainability of the scheme.

Upon entering the building you are met with a rough faced highly textured concrete interior that contrasts with the sharply defined

brickwork envelope of the interior. Pairing this with smooth resin 'concrete' floors, a raw steel balustrade and dramatic 'Tornado' and 'Gant' concrete light fittings, the common parts of the building have a distinct feel inspired by mid-century design and architects such as John Lautner and Denys Lasdun.

The apartments themselves were rooted in expressing materials naturally to create a more timeless aesthetic, with herringbone solid oak flooring, bespoke sapele joinery brushed brass fittings and fixtures and the continuing resin 'concrete' flooring. The units each receive ample sunlight from either end of the property, whereby the presence of the trees gives a sense of living within a suburban-like canopy. Each unit is given both front and rear terraces lined in a dark composite decking, which overlooking Islington and the nearby Canonbury station.

www.fourthspace.co.uk



Images: www.garethgardner.com

THE LIGHT BRICKWORK CONTRASTS WITH THE ADJACENT NEIGHBORING PROPERTIES AND IS MODULATED BY A DARKER CENTRAL GLAZED BRICK SECTION THAT REFLECTS THE SUNLIGHT AS IT PASSES THROUGH THE TREES.



Only LeeSan truly specialise in toilets



Incineration toilet adapted for when nature calls

T: 01295 770000



ZIP INTRODUCES PREMIUM MIXER TAP RANGE TO COMPLEMENT HYDROTAP

www.zipwater.co.uk

Zip Water UK, the brand behind the world's most advanced drinking water appliances, has released a comprehensive range of premium mixer taps to complement its existing HydroTap range.

Launched in response to customer demand, the new mixer taps match the exact shapes and finishes of Zip's HydroTap Arc and Cube designs, both of which offer homeowners filtered boiling, chilled and sparkling water, or any combination to suit their needs.

The mixer tap is available in all 12 colours, including Zip's standard bright chrome, brushed chrome, matt black and gloss black, and Zip's Platinum range of finishes, including rose gold, brushed rose gold, gold, brushed gold, platinum, gunmetal, nickel and brushed nickel.

Russell Owens, Zip marketing director, comments: "As we offer such a wide range of finishes, it's not surprising that those investing in a Zip HydroTap want their mixer tap to match flawlessly, both in terms of aesthetics and quality."

As well as making a stylish addition to the kitchen, the new mixer taps are also functional and highly robust, keeping the sink area looking sleek and fully coordinated for years to come.

Made from the finest plated brass, they feature a classic single lever design and boast a 360° swivel spout, allowing owners to control the direction of water flow.

Available to order now, call 03456 005 005 or visit your nearest showroom for more information. Prices start from £250 (incl. VAT).





DESIGNING WITH DRAINAGE IN MIND

A designer's decision on what drainage to specify will ultimately fall to one of two options: point or linear. Both, so long as they are designed and manufactured well, should be equally as capable of doing their job.

Where there are some distinctions, however, is how they impact on the visual coherence of a space, particularly when considered against a backdrop of current design trends.

Large-format tiles (i.e. those with an edge greater than 600mm in length) have become incredibly popular over the past few years. It's easy to see why: large format minimises grout joints, making for fewer visual distractions and easier cleaning. They can also provide the illusion of increased space in a small room and allow for quicker completion of an installation.

A linear drain is the easiest way to show large-format tiles off to best effect. The ability to place these drains at the very edge of the shower space allows designers to create sweeping, uninterrupted expanses of tile from a floor-level shower into the rest of the bathroom. Usually featuring only one fall, linear drains support a 'tile-first' philosophy, in that they allow the covering material to take centre-stage. As the sourcing of the right tile can be a painstaking mission, this flexibility is a considerable weight off the mind.

A point drain requires deeper consideration. Instead of one fall, a point drain features four, that drain towards a central point. The multiple falls mean that smaller tiles offer the simplest solution, hence why mosaics are a popular partner to this drain design.

So is there a way to make large-format work for this type of drain? Yes, but with careful consideration. Large-format tile can't accommodate a four, or even two, way fall in its regular form, therefore the handling of the tile within the shower space has to be different from the rest of the room. To make the tile work with the falls, the installer will need to consider creating envelope cuts. The way in which these envelope cuts in the tile interact with the grout lines in the rest of the installation is the breaking point between a

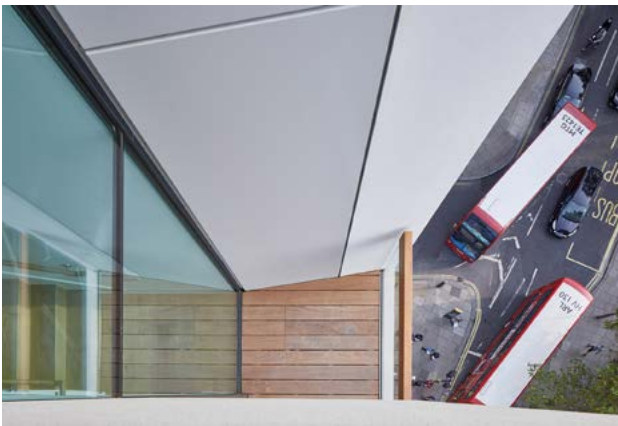


smart and an incongruous effect. To achieve the most harmonious results, the setting out of the tile should begin with the chief focal points of the room. A point drain, with its central positioning, qualifies as one of these.

Whether you're looking for point or linear drainage, Schlüter-Systems has the solutions you need. Our Schlüter®-KERDI-LINE and Schlüter®-KERDI-DRAIN ranges contain everything from tileable grates for the utmost subtlety, through to statement designer options.

All our drains have accessible traps and excellent flow rates, as well as integrated waterproof collars for quick and secure connection to a bonded waterproof assembly. They also form part of the Schlüter®-WETROOM range of products, which provides unrivalled CE Marked waterproofing and drainage solutions for tile and stone.

Schlüter places the world of drainage at your feet; for more information, call 01530 813396, email pr@schluter.co.uk or visit www.perfectwetroom.co.uk.

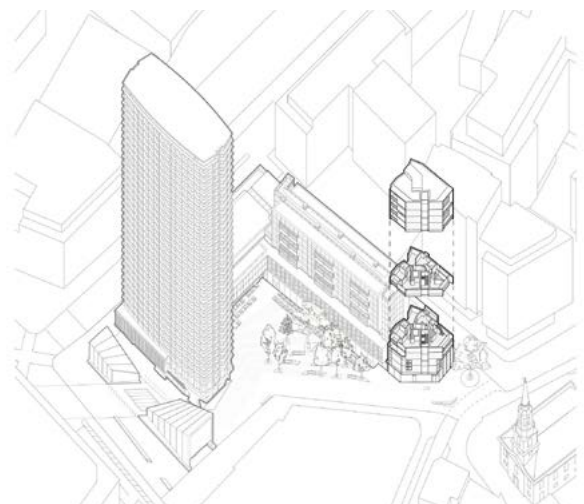


WHITE LION HOUSE

• MICA ARCHITECTS

White Lion House is a mixed-use building containing 13 social and affordable rented homes in Central London, located at the threshold of a new public space around Centre Point. It is the first completed phase of the ongoing redevelopment of the Grade II listed Centre Point complex. Undertaking a civic role, the building acts as both a gateway to the new St Giles Square and defines a new public space in front reinforcing the historic streetscape. The building's façades make sense of the site's historic geometries – facing both the exuberant modernism of Centre Point tower to the north-east and the austere but radical Palladian spire of St-Giles-in-the-Fields to the south.

Set between these facades, a staircase rises at the end of Denmark Street enclosed with a frameless glass wall and capped with a glass roof, flanked on two sides by walls of embossed concrete. The south-western flank of the building reinforces the historic streetscape of the High Street concealed by the modernist planning of the 1960s complex and completes the elevation with a decorative and detailed facade of white precast concrete. The building is a highly efficient single-core arrangement with interlocking units planned to provide remarkable urban homes, raised above the pedestrian level by a ground floor retail unit.

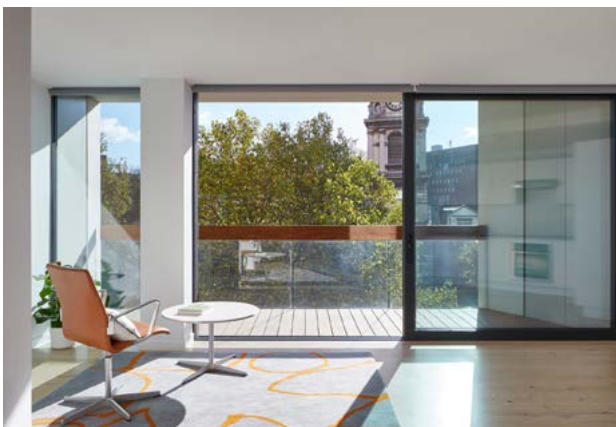


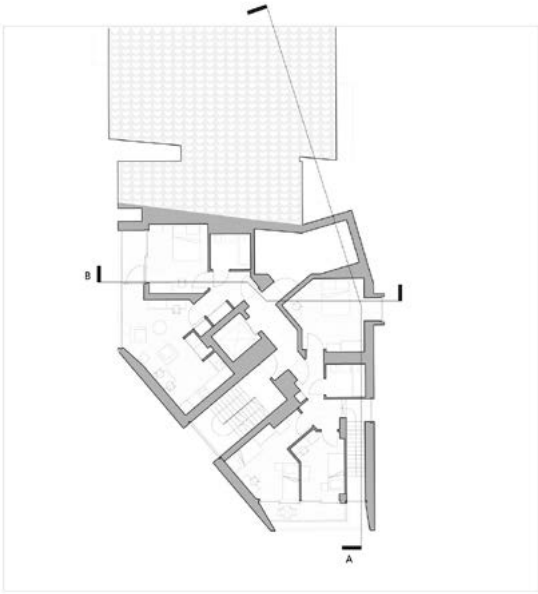
UNDERTAKING A CIVIC ROLE, THE BUILDING ACTS AS BOTH A GATEWAY TO THE NEW ST GILES SQUARE AND DEFINES A NEW PUBLIC SPACE IN FRONT REINFORCING THE HISTORIC STREETScape.



THE BUILDING IS A HIGHLY EFFICIENT SINGLE-CORE ARRANGEMENT WITH INTERLOCKING UNITS PLANNED TO PROVIDE REMARKABLE URBAN HOMES, RAISED ABOVE THE PEDESTRIAN LEVEL BY A GROUND FLOOR RETAIL UNIT.

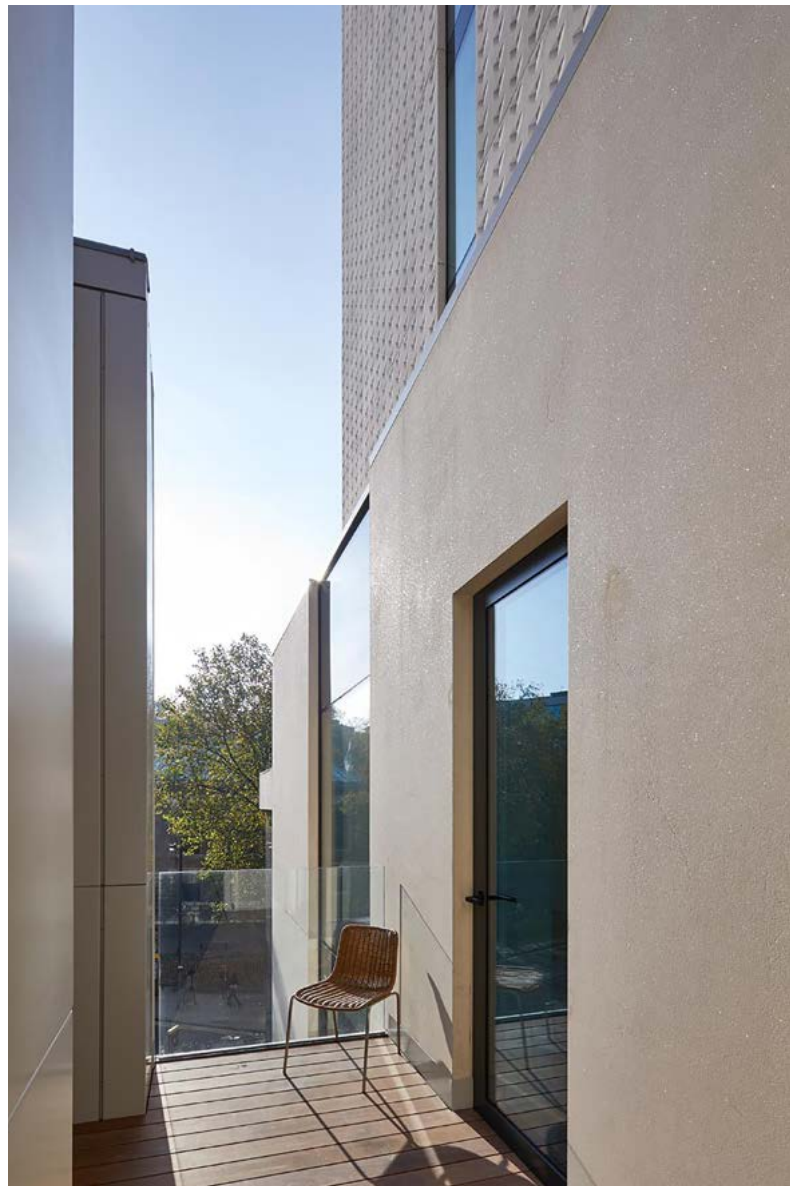
Above this, residential balconies with double-height living spaces form a series of bays recalling the interlocking planning of the Centre Point House residences and providing duplex apartments with separated outdoor spaces. Facing towards Centre Point and the new St Giles Square, dramatic one-bed apartments with floor to ceiling windows with glass to glass corners open onto balconies looking west towards Soho and beyond. The approach to the design of the building followed established techniques for the refurbishment of a listed building. The construction of the new housing was predicated on the removal of a pre-existing pub building – the fourth and least valuable element of the original complex.





Retained elements and finishes of the pub were restored or re-provided based on rigorous research. The black marble wall at street level was restored, retaining this important element of the original composition. Bookending the Earnshaw Street elevation, the new embossed concrete walls blanket the housing with a recollection of the structural façade of Centre Point tower whilst also recalling the sculptural forms of the original building. The approach to heritage was to incorporate new into old without pastiche or discord.





The concrete façade, built in solid precast concrete panels, refers to the graphic appearance of the Centre Point complex embossed with a chevron pattern inspired by the existing tower façade. Recessed and relief testing was done with different material types and finishes, and models and samples were produced including at 1:1. Precast panels adjacent to the listed Centre Point House brise-soleil façade were etched and coloured to match the appearance of the existing façade, in solid concrete rather than the historic ladder form.



ROSSO MANIGLIE
ELEGANZA CON STILE

FINE ITALIAN DESIGN

Rosso Maniglie is our exclusive range of Italian inspired designer levers. Produced using a zinc base material and manufactured to the highest standards, this range takes designer levers to the next level.

Created with a sleek and incomparable aesthetic appeal, our contemporary style Rosso Maniglie range has quickly become the first choice for home owners, architects and house builders throughout the UK.

T : +44 (0) 1228 672 900
E : sales@zoo-hardware.co.uk
W : www.zoohardware.co.uk

For further information on this range visit our website or call one of our friendly sales team.

Rosso Maniglie is part of Zoo Hardware Ltd. 

Improve your family home, Crocodile style.



WINTER SALE 20% OFF

Homecomings and goings are so much easier with a Crocodile Automatic Garage Door. Smart in appearance and ingeniously space-saving in operation, it's the perfect combination of design and function. Call Crocodile today and find out how quick and easy they are to install.

FREE FITTING*
Designed and Made in Britain 

CROCODILE
Garage doors 

*Subject to terms and conditions.

Call Freephone 08000 1122 34

Or visit crocodile.co.uk

MORLAND ERADICATE PLASTIC STRIPS FROM FIRE DOOR FRAMES



Plastic bags, cotton buds, plastic stirrers and straws are all on the UK Governments hit list. However the plastic encapsulated intumescent strip lives long. Too long in the opinion of both David Attenborough and Morland.

With this in mind Morland have developed a fire rated door frame system, Forever Firecheck® under their patent GB2546328 where the intumescent material is held in place by the "wrap" Morland apply to their MDF Mouldings, eradicating the need for the traditional plastic encapsulation entirely.

The wrap can be paper, vinyl, veneer or laminate. Tested and approved by Warrington Certifire this innovative fire safety product was launched at UK Construction Week in October 2018.

Mike Bebb, Morlands' product manager says; "Morland have unique competencies in the reel application of decorative surfaces so it was a logical step for our factory. We now reel off the graphite strip at 25m per minute as part of our standard production process. Fitting plastic seals is a fiddly process. They flick out on the CNCs, they get lost on site, they work loose overtime and they are unsightly. At a stroke Forever Firecheck® addresses all of those shortcomings and additionally eradicates millions of linear metres of plastic use per year. What's not to like? "

'Launched at the NEC during UK Construction Week; where it was received with considerable interest, Forever Firecheck® also won



the 2018 BWF Process Efficiency Award in November. Morland are very pleased to be able to bring this ground-breaking door jamb to market.'

To view the video, order samples or for more details visit www.morlanduk.com/foreverfirecheck

To talk to us further about this innovative product – Contact Jake Cintra our Sales Manager on 01938 551964 – jake.cintra@morlanduk.com

TOUCH

IRONMONGERY LTD

www.atouchofbrass.co.uk

210 Fulham Road, Chelsea London SW10 9PJ

THE PERFECT TOUCH

Established 33 years ago in October 1982, Touch Ironmongery is one of London's leading ironmongers. Originally called "A Touch of Brass", the firm changed their name in 2003 in reaction to slowly advancing market changes in architectural ironmongery which is no longer supplied solely in brass, and to also reflect the broader range of products and finishes that they sell.

In fact today, Touch can supply a wide range of finishes including Brass, Satin Brass, Polished Chrome, Satin Chrome, Polished Nickel, Satin Nickel, Copper, Bronze -solid and plated, BMA, Antique Brass, Black, Pewter, Ceramic, Leather, Stainless Steel, Satin Stainless Steel, Gun Metal, and the list keeps growing. Whatever finish you require, Touch can help you get the right look.

Touch occupy their recently refurbished showroom at 210 Fulham Road, Chelsea, where they display a vast range of their 5,000 products. With a customer base including Interior Designers, Builders and individuals who are

interested in the top end of the Ironmongery market, Touch mainly supply to residential premises but hotel and office properties also contribute to their vast clientele.

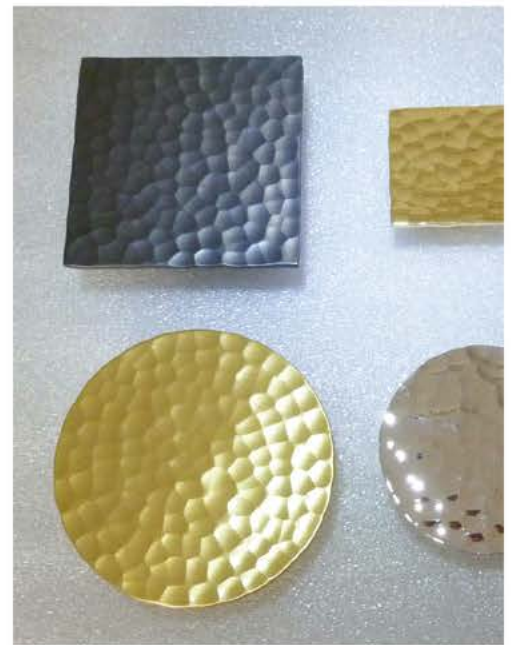
The company also have a healthy export market to all corners of the world, namely the Middle East, Europe and the Americas. Touch's owner and founder, Bill Benham, has 33 years' experience in the ironmongery trade, as do his colleagues Jim Haselup and Alan Blanchard. Saleem Qureshi is the newest member of our team and has 10 years' experience, meaning their knowledge is unrivalled in this industry.

The range of products supplied by Touch date from circa 1640 French (Louise XIV) and cover all subsequent periods (Georgian, Edwardian & Victorian), art deco and contemporary pieces also make up the product ranges. In addition, Touch showcases the very best of British manufacturing; the best ranges are still produced in the Midlands by craftsmen in factories dating back 200 years or more. Touch also sell European manufactured goods

which is considered to be of a very good quality and in recent years they have introduced some of the far eastern made products, albeit in a limited range but cost effective. With trends continuously evolving, new innovative products are constantly under development. Touch understand that keeping up with the fashion-shifts is imperative in order to provide every customer with the best solution for their requirements.

Ironmongery can be a difficult and complicated aspect of a building project, as a result Touch aim to take this awkward aspect and make it user friendly and clear to understand by offering an on-site service where they carry out a detailed door by door, window by window, room by room Ironmongery schedule, highlighting all requirements and identifying any items that can be refurbished. Refurbishment is a large part of the business; Touch will undertake complete ironmongery refurbishment projects, and can restore old paint covered door furniture to their former glory, looking as new, at a fraction of the cost to replace.

For more information about Touch Ironmongery or to arrange a showroom visit please call 0207 351 2255 or alternatively visit www.atouchofbrass.co.uk



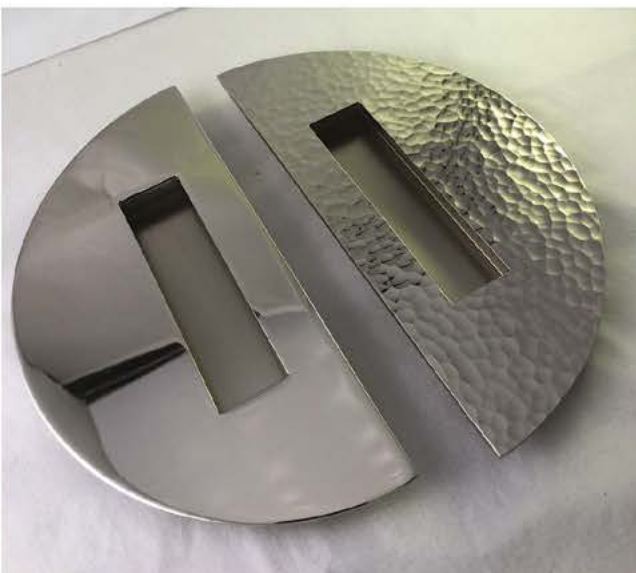
BRITISH & EUROPEAN MANUFACTURERS SUPPLYING THE FINEST QUALITY IRONMONGERY

Touch combine traditional skills with modern manufacturing techniques to produce the most beautiful, quality fittings, built to stand the test of time.

As well as specialist bespoke items, Touch supply over 1000 products, available in 23 different finishes to furnish high end residential and commercial properties, royal palaces, government houses, historic castles and stately homes.

Olaria, available from Touch Ironmongery

www.atouchofbrass.co.uk & www.olariabarcelona.com





AIRPORT HOTEL IS SOARING SUCCESS

Up, up and away - GEZE UK has helped a stunning new airport hotel prepare for 'take off' with a range of products that have given it a real 'wow factor'.

The Novotel London Heathrow Airport T1 T2 and T3 Hotel launched in March this year and has spacious modern interiors with a fluid configuration of public areas that make it suitable for travellers and other hotel customers.

Two sets of GEZE Manual Sliding Wall (MSW) systems – consisting of a total of nine glazed panels with two pass doors – were installed, incorporating natural patterns and forms from the air, sky and clouds. They present a showpiece room divider between bar and restaurant areas that allows the floorspace to be opened out or separated for different uses, such as private functions or breakfast service.

The first set of six panels has an overall screen size of 5010mm whilst the second has three panels and an overall screen size of 3294mm demonstrating the bespoke nature of the MSW system both are 2400mm in height. Each panel discretely locks into the next one via a floor locking device, which is completely hidden from view. A recessed roller track is fitted above to further enhance the sleek appearance whilst its SmartGuide system enhances functionality.

The hotel's impressive entrance was created by a pair of automatic sliding doors, fitted with pocket screens for extra safety and powered by Slimdrive SL NT operators.

With a height of just 7cm – Slimdrive SL NTs are almost invisible, virtually silent in operation and can move leaf weights of up to 125kg. They are ideal for buildings with high levels of footfall and a continuous flow of people heading in and out of the building. The glazed doors were etched with spheres incorporating a 'welcome'

and a Novotel logo. A fretted canopy was fitted over the exterior of the entrance.

Also fitted were 300 TS 2000 NV BC overhead door closers to bedrooms and public areas. These closers are suitable for doors with up to 1100 mm leaf widths and provide fire and smoke protection. They have an adjustable closing force which means that they can be balanced to reduce noise from guests entering or leaving their rooms.

GEZE UK worked on the project with owner and developer Nine Group, London-based Konzept Interior Design and architectural ironmongers Franchi Plc of Kent, from its early stages of development. GEZE had worked with the developer on a previous installation at Novotel Canary Wharf and its owners were sufficiently impressed to contact the company to work on this new hotel.

Andy Howland, Sales and Marketing Director for GEZE UK: "The full GEZE UK team collaborated closely on the project from sales and distribution to service and finance, they worked together to accommodate the particular requirements of the client, carrying out site visits and advising on issues surrounding our installations. The outcome is a very impressive hotel which really raises the bar within the sector. It is a hotel with many fabulous features that clearly demonstrates that affordable luxury is achievable."

The four-star hotel has 166 contemporary bedrooms all equipped with air conditioning. It includes a gym, library, events rooms, brasserie restaurant and rooftop bar overlooking the airport's runway.

For more information about GEZE UK's comprehensive range of automatic and manual door closers call 01543 443000 or visit www.geze.co.uk

TIMBER WINDOW AND DOOR SPECIALISTS

The Sash Window Workshop specialise in the replacement and repair of timber windows and doors. The company was established in 1994 and has extensive experience collaborating with many different homeowners, architects, contractors, builders, interior designers and developers.

They offer a wide range of services, including: new timber windows and doors, with a supply and fit, or supply only service; new sashes into existing window frames; draught proofing and refurbishment; secondary glazing; and re-glazing existing windows, using their Bi-Glass service.

The Sash Window Workshop have worked on a wide range of period properties and pride themselves on providing tailor made solutions to suit their clients' requirements. Every window and door in a period property is bespoke. This means that the company must pay extraordinary attention to detail when manufacturing replacement timber windows or doors.

All their new joinery is manufactured from their workshops in Berkshire using the latest in computer operated machinery alongside the eye for detail of their traditional craftsmen. Their craftsmen and installers are experts in their field, and will provide you with beautifully made, thermally efficient windows and doors. The materials the company use enable them to produce windows to the highest specifications, giving the best possible performance and combining minimum maintenance with maximum lifespan.



The Sash Window Workshop are FSC® Certified, FENSA registered and members of the "Which" Trusted Trader scheme. They understand the importance of completing the required work within the timeframe of your project and will work with you to ensure that deadlines are met.

To obtain a free quotation, contact The Sash Window Workshop on: 01344 868 668 or email info@sashwindow.com. You can also visit their website: www.sashwindow.com



THE SASH WINDOW WORKSHOP

THE FINEST TIMBER WINDOWS AND DOORS

PROVIDING TAILOR MADE SOLUTIONS FOR YOUR PROJECT

- Period Property Specialists. Suitable for Conservation Areas and Listed Buildings
- Supply Only, Supply and Install, Repair and Refurbish



Previous prestigious projects include: St James' Palace, The Admiralty Buildings, Clendon Park, The Grove Hotel, and Oxford Wildlife Trust.



01344 868 668

www.sashwindow.com





‘ALUPROF SUPPORTS MODULARISATION CONSTRUCTION TECHNOLOGY’

Wojciech Brożyna -
Managing Director
Aluprof UK



Not a new technology, but a design approach which continues to grow in popularity. Recent projects completed with Aluprof systems show what is possible and the benefits that this approach can bring.

The construction industry has used modules, such as bathroom ‘pods’, for many years where a repetitive build, such as a hotel, has many of the same elements. There is a big benefit of producing these off-site in a controlled environment where specialist equipment is available and good levels of quality control. Simply delivered to site, lifted into place and services already provided and in place to simply link-up.

Modularisation has now gone further to complete walls for rooms which can be produced with openings with fitted windows creating

a waterproof and structural unit. Some of these larger room ‘pods’ can be produced as complete rooms with finishes and furniture complete. Protected adequately against the elements, each unit is transported to site and simply lifted into place usually on a prepared structural grid.

The concept of the ‘pod’ hotel has been constructed in the USA, the rooms are generally smaller than average, so more rooms can be accommodated for any given city space, but quality of the rooms is higher with finishes lasting longer, in turn this makes these rooms more cost effective for the guest. In the USA they have even produced small apartments on this basis which are known as ‘pod pads’.



The concept could be adopted in the UK to ease our housing shortage, particularly in the city.

The idea of modularisation and hotel construction are a very good match and many of the new hotels constructed today use this technology. The concept works for both budget hotel construction and city centre luxury hotel developments. The modular method of construction allows developers to realise hotels of up to 20 storeys to be quickly erected.

The key for the window system is to allow the window to be fitted within the 'pod' and finishes to be made good internally, but then having an ability for the external facade to be finished up to the window system and made serviceable and weathertight. Aluprof have worked with several companies to achieve bespoke solutions and provided trained installers at the point of installation.

The ability for construction to be completed on site quickly and to quite accurate precision with minimal snagging issues means that this method of construction is very economical, especially for repetitive structure layouts such as hotels. It is claimed that a 100 bed hotel could be erected on site in just two weeks using the modular pod construction.

One recent example of this type of construction is the recently opened Moxy Hotel at Aberdeen airport which was constructed by Robertsons. Using modular CLT (Cross Laminated Timber) construction, manufactured in Italy, the upper floors were assembled and bolted on top of a steel framed ground floor structure. The



completed pods were then linked to a modular network of services within the new structure.

In the south, the Citizen M hotel at Shoreditch, London was also constructed using a similar principle of construction.

Benefits realised by the client included; a quicker construction than compared with a traditional build method, this allowed the client to generate revenue earlier; an enhanced quality of final construction due to the strict testing and auditing regime of the factory and increased safety, as fewer man hours are required on site.

Aluprof can offer guidance on all forms of construction which require windows or curtain wall systems, either installed into off-site element or on site installations. With early engagement in the design process, often savings can be made in both installation requirements and bespoke profiles.

Aluprof UK's head office and extensive distribution centre is located in Altrincham, Cheshire. Aluprof systems are increasingly being specified on a wide range of residential and commercial projects across the UK including Passivhaus projects. Systems are designed, fabricated and installed by selected, specially trained local companies, to ensure each fabricated product meets Aluprof's exacting standards.

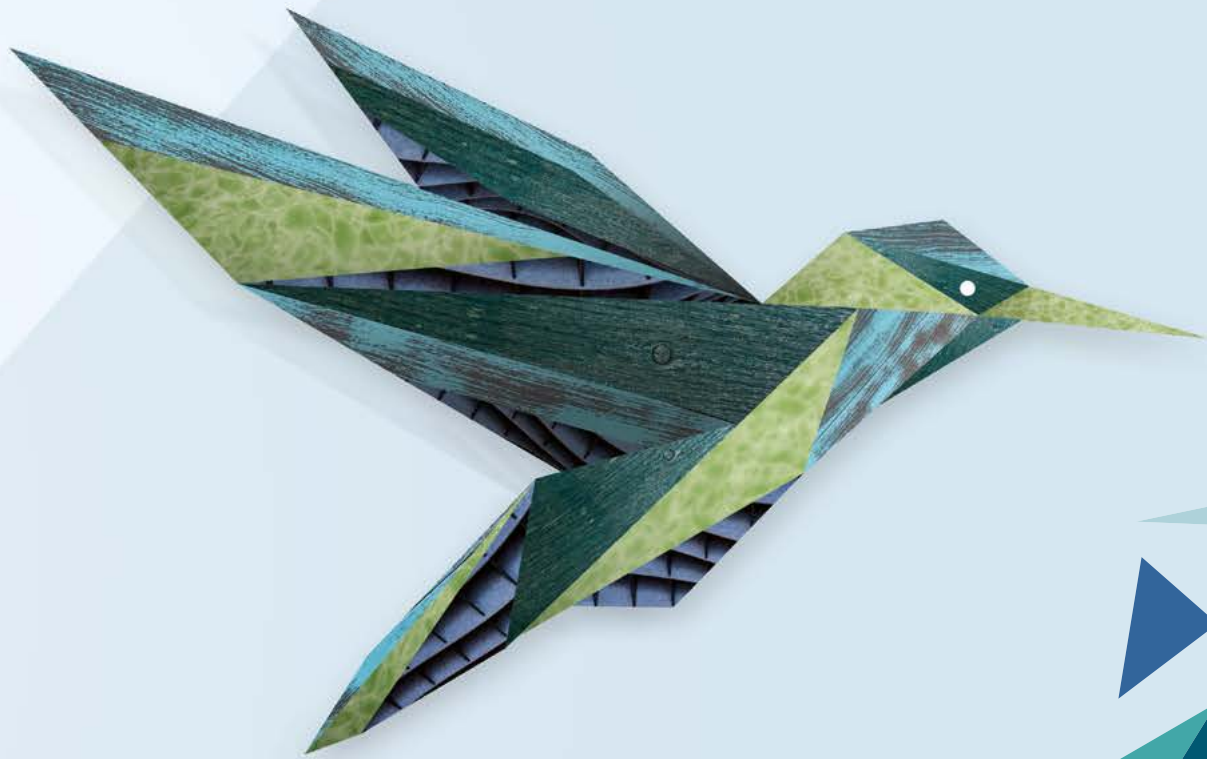
Further information is available on the company's website at www.aluprof.eu and specialist advice is available directly from Aluprof's UK offices on 0161 941 4005.

SURFACE DESIGN SHOW

BUSINESS DESIGN CENTRE
LONDON – 5 - 7 FEB 2019

www surfacedesignshow.com





REGISTER
NOW

BRINGING SURFACES TO LIFE

THE UK'S MOST DYNAMIC DESIGN EVENT

REGISTER NOW AT:

WWW.SURFACEDESIGNSHOW.COM

#SDS19 @SurfaceThinking

STONE
GALLERY



LIGHT
SCHOOL

**SURFACE
DESIGN
AWARDS**



CELEBRATING THE BEST IN **NEW AND INNOVATIVE SURFACES**

Surface Design Show is the only event in the UK that focuses solely on interior and exterior surfaces.

For more than ten years Surface Design Show has been the place where industry professionals immerse themselves in the latest materials for the built environment, gain new insights and network with like-minded designers, architects and suppliers.

Surface Design Show 2019 also features some 40 talks from over 50 industry professionals, all designed to engage and inspire.

The Opening Night Debate returns from 6.30pm on the first day of the Show, Tuesday 5 February. Organised in association with the Royal Institute of British Architects (RIBA) and New London Architecture (NLA) it will discuss whether factory-made housing can provide Londoners with better places to live. The panel will be chaired by Peter Murray of NLA, with Ben Derbyshire of HTA Design and RIBA President, Carl Vann of Pollard Thomas Edwards and Hazel Rounding of shedkm debating the topic 'Factory-made Housing: is this the solution to building better homes long term?'.
[View more](#)



SURFACE DESIGN SHOW 2019 ALSO FEATURES SOME 40 TALKS FROM OVER 50 INDUSTRY PROFESSIONALS, ALL DESIGNED TO ENGAGE AND INSPIRE.



THE SHORTLIST FOR THIS YEAR'S SURFACE DESIGN AWARDS CONSISTS OF AN IMPRESSIVE 43 CATEGORIES ACROSS SEVEN CATEGORIES



Returning for 2019 is the ever popular PechaKucha Evening, hosted by Chris Dyson of Chris Dyson Architects on 6 February from 6.30pm. Speakers include Nigel Ostime of Hawkins Brown; Soraya Khan of Theis and Khan Architects; Alex Scott-Whitby of ScottWhitbyStudio; Stuart Piercy of Piercy and Co; Simon Fraser of Hopkins Architects; Alison Brooks of Alison Brooks Architects; Lucia Berasaluce of Haptic Architects and Ben Cousins of Cousins & Cousins Architects. Presenters will discuss 'Identities and Boundaries: site specific responses to modern architecture' in an exciting and inspiring format using 20 images, each discussed for 20 seconds.

Stone Gallery, which is officially supported by Stone Federation GB whose Stone Knowledge Hub forms a focal point for the event, will also be returning to Surface Design Show 2019. Stone Gallery, which is also supported by media partner Tomorrow's Tile & Stone, is an industry-leading event for architects and designers to meet and specify natural stone. The Stone Hub stage will host a series of presentations curated by Arup.



Now in its fifth year Light School, the home of architectural lighting, allows architects and designers to touch, compare and learn about innovative lighting and technology products. The Light School arena, Light Talks, will return once again supported by the Institution of Lighting Professionals and LED Linear.

Since 2013 the Show has hosted the Surface Design Awards, now recognised as one of the most respected events in the design calendar. The 2019 Awards received 197 entries from 22 countries, including America, Italy, China and India. There are 13 awards that recognise exterior and interior surfaces for different sectors of design, including commercial, housing, light and surface, public building, retail, sustainable, and temporary structure.

The shortlist for this year's Surface Design Awards consists of an impressive 43 categories across seven categories, including entries from Zaha Hadid Architects, Studio Egret West and Chris Dyson Architects from the UK, Rockwell Group from the USA, and Kengo Kuma & Associates from Japan. Each entry is an exemplary example of creative and innovative use of materials and lighting in both interior and exterior schemes. Some projects received nominations across several categories, resulting in 48 finalists. The Awards Presentation will take place on the morning of Thursday 7 February, at Surface Design Show. Tickets to the Presentation are available via the Surface Design Show website. Award partners include; James Latham, Finsa, Business Design Centre, Soluis and Roof Maker.





The Kronodesign Global Collection is available through James Latham

SURFACES INSPIRED BY DESIGN



James Latham returns to London's Surface Design Show in February, where it will be showcasing one of the biggest and most varied collections of surface solutions for both inside and outside the building.

Created to inspire architects and designers when looking to specify materials, the stunning collection of decorative panels and timber reinforces Latham's status as a single-source supplier and has been carefully selected to provide innovative ideas for design and product specification.

During the show, Lathams will be featuring a number of exciting new products and range additions for 2019, both on its usual, eye-catching stand on the ground level (stand:208) as well as in its permanent Product Specification Showroom which is located on the Gallery level of the Business Design Centre at Suite 301.

Chris Sutton, Managing Director, James Latham explained, "Working in conjunction with our supply partners, who are among the biggest and most recognised surfacing brands in the World and experts at forecasting trends, we are presenting our take on both interior and exterior surface solutions for the future.

"Showcasing a wide range of design-led exclusive and semi-exclusive products, our stand, and indeed our showroom, will act as a hub for providing ideas and inspiration to visiting architects and designers."

Latham's highly experienced and knowledgeable team of products specialists will be on hand both on the stand and in the showroom, to offer practical support, technical advice and specialist knowledge



HL_MACS is exclusively available in the UK through James Latham

on selecting products, and to explain how they can offer support throughout the entire specification process.

This year, James Latham will be showing the latest range additions for 2019 from supply partners including; Decospan, Abet Laminati, Garnica, Egger, Kronospan, AE Core, XyloCleaf, Accsys, LG and Sekisui SPI as well as a range of timber cladding, flooring and engineered timber sections, plus, an exciting, exclusive new product launch will be announced.

The Surface Design Show takes place at the Business Design Centre, 52, Upper Street, Islington, London, N1 0QH between 5th-7th February 2019 – www.surfacedesignshow.com



2018 NATURAL STONE AWARDS



Held every two years, the Natural Stone Awards attracts entries from architects, main contractors and natural stone firms for projects across Great Britain.

This year saw hundreds of projects entered across the different categories, and particularly encouraging was the 15% increase seen in entries compared to the 2016 Awards, making the judge's task even harder.

Organised by Stone Federation Great Britain, the official trade association for the natural stone industry, the biennial Natural Stone Awards celebrate the best examples of the use of natural stone in construction projects from across all sectors of the industry. Stone Federation Chief Executive, Jane Buxey commented that:

"The 2018 Natural Stone Awards have been a fantastic celebration of the very best that this industry has to offer the architectural, construction and design sectors. The amount of projects featuring a mixture of traditional stonemasonry and CNC machinery is a good example of the intelligent approach taken by the sector to embracing innovation while maintaining the skills that form the bed-rock of this industry. I would like to congratulate all those involved with the winning, highly commended and commended entries for their part in the creation of these stunning projects."

The standard of the winning, highly commended and commended projects was very high throughout the eleven categories. The category winners were all exceptional examples of the successful use of natural stone across a wide range of applications, from the soaring, cathedral like interior of Clarges, Mayfair and the stunning use of local field stone seen on Contour House, to the transformational restoration of Halifax's Piece Hall and the expert conservation work undertaken on Westminster Palace's Chancellor's Court.

The Awards Ceremony was compered by sports presenter Jim Rosenthal who was assisted by voice of Strictly Come Dancing and the National Lottery, Alan Dedicoat. Stone Federation were also delighted to welcome Loyd Grossman CBE FSA as the guest speaker for the event.

The 2018 Natural Stone Awards enjoyed the support and sponsorship of a number of well-respected trade bodies and industry firms including BRE, Gallagher, Hardscape, Historic England, Natural Stone Specialist, Sandberg, SBID, Schluter-Systems and the Worshipful Company of Masons.

Guests at the Awards received a copy of the 2018 Natural Stone Awards Souvenir Brochure which can be ordered free of charge at bit.ly/StoneAwardsBrochure

Stone Federation Great Britain

The trade association for the natural stone industry

Your independent natural stone source point



- Technical Support
- Stone Selection
- CPDs
- Design Inspiration
- Find a Supplier
- Independent Advice

E: enquiries@stonefed.org.uk

W: www.stonefed.org.uk





YARD

SKYLAB

Located at the geographic centre of the city of Portland, YARD is a 21 story mixed-use building that combines residential, commercial, retail, office and parking.

Positioned in the rapidly changing central east side of downtown Portland, at the base of the iconic Burnside Bridge and skate park, the site presented a multitude of challenges, both at an infrastructure and cultural level.

As a podium + tower design, YARD connects seamlessly with the neighborhood via the intersecting streets and across the city skyline.

The podium at level 5 is open to the public, offering spas, co-working space and eco-roof encouraging Portlanders to take advantage of unprecedented views of the city.

Above the podium is a residential tower rotated along the river and oriented to maximize connections to the urban landscape to the west and dynamic mountain views to the east.

YARD is a catalyst project born of the city's effort to revitalize entrepreneurial development. It's the spark of a new neighborhood, a rare opportunity to remix pre-established elements (like the iconic Burnside Skatepark) with groundbreaking design and an underutilized riverfront location.



YARD IS A CATALYST PROJECT BORN OF THE CITY'S EFFORT TO REVITALIZE ENTREPRENEURIAL DEVELOPMENT.



BESIDES PROFESSIONAL WINNERS,
STUDENTS WERE ALSO SELECTED AS
WINNERS IN THEIR OWN CATEGORIES.

PROJECT DATA

Client—Key Development Corporation
Location—Portland, OR
Size—343,100sq. ft.
Project End Date—June 2016
Architects—Skylab
Contractor—Andersen Construction
LEED Certification—LEED Silver
Collaborators—2 ink Landscape Architecture, KPFF, PAE, Berg Electric, American Heating, Peninsula Plumbing, Patriot Fire, GeoDesign, JLC Architectural Consulting, Code Unlimited, SSA Acoustics, The Facade Group, Brightworks, Open Studio Collective
Photographers- Stephen Miller, Maria Lamb, Brian Walker Lee,

ABOUT SKYLAB

Established almost two decades ago in Portland, Oregon, Skylab is a band of makers—curious, industrious and experimental. As architects, designers, creators and entrepreneurs, Skylab works together across a wide range of landscapes and locations. Their designers are futurists, making today what they believe will inspire and connect people tomorrow. By exploring, curating and innovating, they are always looking ahead to create what may shape tomorrow. Skylab reveals the unseen for those willing to seek it.

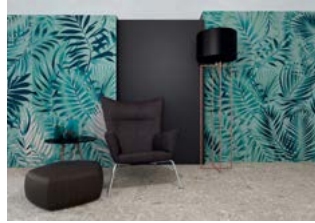
Offering unique and customized services, Skylab’s greatest value is in their holistic approach to problem solving across the following disciplines and offerings: Architecture, Interior Design, Branded Environments, Planning.

skylabarchitecture.com



CREATE BESPOKE SLABS ON DEMAND WITH SOLUS

Leading tile supplier, Solus is now offering designers the opportunity to invent their own ceramic artwork by using the latest technological advancements.



For those looking for unique and intricate tiles that are not available from distributors, bespoke slabs can provide the creative freedom to invent almost any imaginable design. Designers have the flexibility to provide a totally original design, whether it is a simple pattern or a complex graphic print. This design is then brought to life in the production process.

Production can range from a single piece to a full run of thousands of tiles. Tiles are printed with a high quality, hardwearing finish that is suitable for both commercial and residential wall installations. Due to the bespoke production technique, most orders will take eight weeks to arrive from conception to completion. The tiles can then be further customised with bespoke cuttings.

Architects and designers can choose from a huge range of existing designs, including beautiful gradients, lush botanical motifs, modern tartan prints and abstract terrazzo artwork and customise them using any combination of colours from a palette of trendy muted shades.

For more information, call Solus on 0121 753 0777, email sales@solusceramics.com or visit www.solusceramics.com

Dr. Schutz®

SCRATCHFIX ✓
FLOOR REPAIR SET

- ⦿ Quickly and easily repairs scratches on LVT, Design, Lino and other Vinyl floors!
- ⦿ Optimally match the gloss grade of polished and modern floors!

www.drschutz.co.uk
 Tel: 01296 437827

REIMAGINED...
REDESIGNED...
REDISCOVER RAWSON

INTRODUCING THE **NEW AND UPDATED RANGE** FROM RAWSON CARPET SOLUTIONS.

RAWSON
CARPET SOLUTIONS

Get in touch with our creative sales team for more information and technical knowledge.

+44 (0) 1924 382860
www.rawsoncarpetsolutions.co.uk
rcsales@werawson.co.uk

The UK's leading Contracting Service in
Surface Preparation, Removal & Finishing



Workshop Floor
Polished to perfection

Call +44 (0)1522 561460 www.thepreparationgroup.com



POLYFLOR LAUNCHES NEW COLONIA COLLECTION

Building on the continued success of their Luxury Vinyl Tile offering, Polyflor is delighted to reveal an exciting new Colonia range.

The updated Colonia Collection features all 18 original shades with the introduction of 8 brand new on trend designs. Following extensive design, trend and performance research each shade is carefully developed to complement a variety of residential interiors and reflect the current interior design trends, identified by our in-house design teams.

The expanded collection now consists of 26 shades, including 15 stunning wood effects, 8 beautiful stone and 3 contemporary concrete designs, also offering an exclusive selection of inlay accessories that have been purposefully designed to enhance each shade within the Colonia collection.

With a 2.0mm gauge and a 0.2mm wear layer Colonia has been constructed to withstand the demands of busy lifestyles and engineered specifically for the residential sector including private housing, social housing, housebuilders and housing association. Each plank and tile features a protective polyurethane reinforcement treatment and is UV cured to provide enhanced protection from everyday wear and tear, and offers a polish-free maintenance regime.

Polyflor's UK and International Marketing Director, Tom Rollo comments, "The idea behind this exciting relaunch was to build on the success of the existing Colonia Collection by adding a selection of new and on trend designs as identified by Polyflor's in house design team. The combination of the original Colonia shades along with the new designs broadens the collection considerably, ensuring that Colonia continues to be the perfect match for on trend, high design residential interiors."

The new Colonia collection features a vast array of inspirational installation photography that can be found in a brand new 84-page brochure alongside styling tips and project planning guides. This is accompanied by several sales support items including a new and improved retail presenter, shade card and retail display unit.

Colonia flooring is 100% recyclable, contains recycled content and certified very low for VOC emissions achieving a Gold Indoor Air Comfort Level, an internationally recognised indoor air quality standard.

Free Colonia samples are available to order from the Polyflor and Polyflor at Home websites or via the Polyflor Samples Hotline on 0161 767 2551.

Further details of Polyflor's extensive range of resilient vinyl flooring are available from Polyflor Ltd, Radcliffe New Road, Whitefield, Manchester, M45 7NR. Tel: 0161 767 1111. Fax: 0161 767 1128.

Website: www.polyflor.com Email: info@polyflor.com



Hardwood Flooring

bespoke finished
to complement
your designs



☎ 01462 486586

✉ info@roversflooring.co.uk

🌐 www.roversflooring.co.uk

33 Jubilee Trade Centre,
Jubilee Road, Letchworth,
Hertfordshire SG6 1SP

 **ROVER'S**
FLOORING

PRODUCERS, IMPORTERS & DISTRIBUTORS

RAWSON CARPET SOLUTIONS

UK manufacturer Rawson Carpet Solutions, proudly supplied carpet tile for the new works at Chester University.

Utilising a new product 'Dash' and highlighting the installation with one of the Heritage ranges 'Freeway', The colleges interior received a nice facelift. The tiles are exceptionally durable and supplied with a series of catching, yet subtle colourways which add to the pleasing nature of the space. In addition, areas were completed using another of Rawson's recent designs 'laserlight'. This product, similar to Dash but with chequer plate aesthetic contributed to a clean, durable and easily maintained building.

Happy with Rawson products and service was Brendan Molloy of Chester University Facilities department. He stated:

"The University has specified Rawson Carpet Tiles for use within one of the University Buildings and have specified it for its durability within a contract environment. In addition border colours have been specified to compliment dash tile."

Rawson has always been a Carpet tile of choice for the education sector. The product range on offer allows our clients to get what they want, whether that is purely for design aesthetic, using one of our new solution dyed nylon products, or whether the requirement is durable, functional and economical. The broad range of products allows the client this luxury.

Our BRE A+ individually assessed products provide the client with confidence in their environmental choices. Rawson provide long established and proven entrance mat solutions and now also digital printed acoustic wall solutions too. With such a reputation for reliable service and, now with new branding and products, we are surely the UK manufacturer to trust.



Get in touch with our creative sales team for more information and technical knowledge.

W E Rawson Limited

Castle Bank Mills, Portobello Road Wakefield, West Yorkshire WF1 5PS

+44 (0) 1924 382860

www.rawsoncarpetsolutions.co.uk rccsales@werawson.co.uk

Call us **01296 481220** Learn more osmouk.com

WOOD FLOORS TINTED TO PERFECTION

POLYX®-OIL TINTS: Highest quality colour and protection for wood

✓ MICROPOROUS | ✓ NATURAL | ✓ OIL-WAX BASED | ✓ DURABLE | ✓ HIGH COVERAGE



AUTHENTIC WOOD DESIGN FLOORING

The UK's market leader in luxury vinyl flooring Kardean Designflooring is extending its sophisticated Art Select wood collection with 14 new contemporary designs, including shades of French oak, hickory and American chestnut, in a range of tones from gentle beige and cool grey to warm honey and chocolate tones.

Designed to accommodate a growing desire for highly realistic flooring, the latest Art Select wood designs feature intricate patterns for impressive variation across the floor and introduce an exclusive realistic embossed surface. With a preferred 3.0mm thickness, 0.7mm wear layer and enhanced R10/R11 slip resistance ratings, the new designs are available in extra-large planks (56 x 9") to effortlessly recreate a highly authentic look of traditionally crafted wood planks.

www.kardean.com/ASW2018

01386 820104



PARKRAY ASPECT STOVES: BIG SCREEN ENTERTAINMENT

Hunter Stove Group's stunning Aspect Collection brings big screen entertainment to homes large and small. From slimline stoves that are perfect for compact corners, to more powerful models that can warm the largest of living spaces with ease, there's an Aspect stove to bring warmth and life into every setting.

UNBEATABLE VIEW

The Aspect Collection represents a stylish evolution in wood stove design. Whilst traditional stoves focused predominantly on intricate steel body work, with only a small window to check the status of the fire, an Aspect stove instead offers the full wood burning experience. Thanks to their uniquely large viewing windows, the stoves in Hunter's Aspect range provide panoramic flame pictures that showcase the full beauty of a real fire. It's this mesmerising view that makes an Aspect stove such a striking centrepiece in any living space.

A STOVE FOR EVERY HOME

Hunter's Aspect range caters for any size and style of home. Their smaller stoves are perfect for more compact living areas, with special slimline models for rooms with narrow hearths, whilst the roaring glow of their larger Aspect stoves will bring the most spacious of rooms to life. For contemporary open-plan spaces,

an Aspect double-sided stove makes an eye-catching design feature. The collection even includes a boiler stove, the Aspect 80B, which is capable of running up to 20 radiators and hot water – an impressive combination of striking aesthetics and powerful functionality.

THE RIGHT FUEL FOR YOU

Although wood burning is a popular choice, some people prefer the flexibility of a multifuel stove or the convenience of a gas appliance. Each stove in the Aspect Collection is available with a multifuel kit, so you can burn the fuel that's right for you. Hunter are also working to bring the stunning vista of the Aspect range to gas stoves, which offer a convenient, versatile alternative to wood burning. With the same large windows and effortlessly impressive flame pictures as their wood burning counterparts, the Aspect Gas Collection will deliver big screen entertainment in equal measure.

Sitting snug in a fireplace or proudly freestanding, an Aspect stove becomes the heart of the home. Simply sit back, relax and enjoy the view.

To see the full Aspect range, and to find your nearest retailer, please visit hunterstoves.co.uk.

BIG SCREEN ENTERTAINMENT



STARE INTO THE WINDOW OF THE ASPECT AND YOU'LL
FALL INSTANTLY IN LOVE WITH THE MESMERISING VIEW.

The Parkray Aspect wood-burning stove boasts a large, clear-view
window that floods warmth into the heart of your home.

With ultimate heat control, efficiency-first technology and
stylish design, the Aspect is a gorgeous addition to any room.

PARKRAY 
aspect collection



GLEN DIMPLEX HEATING & VENTILATION

Glen Dimplex Heating & Ventilation are dedicated to the design and development of sustainable heating, cooling, ventilation and hot water products and systems for both commercial and residential settings. The future of HVAC lies in product innovation - creating solutions that contribute towards our zero carbon future, and we are devoted to continual investment in sustainable, low carbon technologies. Our extensive product portfolio spans from the Zeroth Energy System and Mechanical Ventilation and Heat Recovery through to Heat Pumps, electric heating products and a range of heating and cooling emitters that all support comfortable, sustainable living without having detrimental effects on building design.

COMPLIANT, DESIGN-LED HVAC INNOVATION

As specialists in the HVAC sector, we understand the regulations and measures that are necessary to achieve compliance with these systems, and constantly develop our products to stay ahead of forthcoming incentives.

Our Fan Coil Units (FCUs) can provide both heating and comfort cooling to your building with close temperature control. This includes unique MultiRoom Fan Coils that enable a single unit to supply up to five individual spaces - reducing the need for additional FCUs. We also offer vertical and bespoke units that have been engineered to satisfy design-led requirements such as exposed building services.

Our electric heating range spans from designer electric panels with lava stone fascias and intricate geometric steel designs, through to our High Heat Retention Storage Heaters that have unrivalled storage capabilities. This range allows us to cater to both luxury and standard specifications.

Our premium gas and electric fire offering can see bespoke solutions created for luxury residential applications. Our modular MatriX and

e-MatriX lines are a truly tailored solution for incorporating flame technology into premium residential spaces. Having been created to fit into varying mounting frames, structures and rear walls, they allow for complete freedom of design.

EXPERT SERVICES

The Glen Dimplex Heating & Ventilation portfolio of services includes an in-house team that can provide a full product specification of our HVAC products and systems - including full heat loss calculations and a complete product and accessory specification for both commercial and residential projects. This is a free, no obligation service and takes away the hassle of integrating the relevant systems into the designs yourself.

We also recently launched our new RIBA accredited CPD entitled 'Electric Flame: Ignite your imagination', showcasing the incredible advances in electric flame technology and demonstrating how you can incorporate electric flame in your building design.

www.glendimplex.com





Industry-leading Heating & Ventilation solutions



Heating | Ventilation | Hot Water | Cooling

For more information call **0344 879 3587** or email pre-sales@glendimplex.com

Glen Dimplex
HEATING & VENTILATION

Innovative | Expert | Proven | Trusted

CHIMNEY SYSTEMS CPD

Schiedel have developed a CPD which discusses various aspects of the chimney design and installation process. The interactive discussion includes:

- Appliances, fuels and product types
- Building regulations
- CE marking
- Safety considerations such as Distance to Combustibles
- Different types of installations and how to overcome problems
- Installation of mineral and steel systems

The CPD also includes a number of video guides from our YouTube TV Channel which were shown and a USB stick was also provided which included a very handy guide in the form of a flowchart, which easily directed the user to the relevant areas on the stick where they could access drawings and easily download installation brochures relevant to them.

"Schiedel Chimney Systems agreed to write and present a lunchtime CPD covering the topics we requested. The seminar was extremely helpful and covered the technical knowledge that we needed. The presenters John and David were happy to take time at the end of the presentation to answer questions and talk through some of the technical queries that we had on projects. They also left us with a memory stick with information which has been really useful. We would highly recommend this seminar to Architects." Milton Architects

If you are an architect firm or developer, residential and non-residential, then don't hesitate to contact us if you wish to have a CPD at your place – we'll bring the sandwiches!



Pumice

Easy building blocks to create a chimney

Made from volcanic pumice | Lightweight
A natural insulator | Easy to install

Isokern is made from natural pumice sourced from the Hekla Volcano in Iceland.

Lightweight, simple to install and highly resistant to temperature change, Isokern reduces the possibility of cracking and structural damage due to expansion and contraction.

What's more, as a natural insulator, pumice is highly effective at keeping flue gases warm, while not transmitting heat to the outside.



Join us on Facebook
SchiedelUK



Why not see what it could do for your next project?

Speak to us about our **FREE CPD**

For videos, brochures and more:
www.Schiedel.co.uk

ALTERNATIVE INSULATION MATERIALS

POLYURETHANE FOAM FOR BETTER INSULATION

Polyurethane foam can be used as a high performing insulant for all types of new build or refurbishment project to meet or exceed today's standards. It is also widely used by architects and specifiers for remodelling purposes, for instance in barn conversions. When used for airtightness or stabilisation under the roof or within the cavity it outperforms most other materials.

The sprayed or injected foam is not just an insulant – it can be used for stabilisation purposes, for instance to hold tiles in place for a stronger roof structure or to take the place of failing cavity wall ties. The material can often be used when other materials are simply not suitable. The material is so versatile that it can be used in many different situations from buildings to boats!

For wall insulation, injected polyurethane foam can be used in the cavity to provide a superior performing insulant which also helps to bond the inner and outer leaves providing strength to the building. Air leakage through the cavity can be reduced to zero. Because of the greater thermal performance and the reduced air leakage PU foam outperforms all other forms of cavity fill.

It is a much less costly alternative to re-roofing and can be applied to slates, tiles and other various roof coverings. It permanently cures the problems of nail fatigue and makes the roof much more resistant to storm or impact damage. Because it is liquid when it is applied, it seeks and seals any unwanted air



leakage that may occur preventing the ingress of wind-driven rain, snow and dust and dramatically reducing heat loss.

The foam also slows the deterioration of tile/slates by frost. On the underside of the covering frost damage is eliminated. On the weather side the frequency of the freezing/thawing cycle is reduced. Slates and tiles will be less prone to damage by impact as the foam distributes the forces.

When choosing a BUFGA registered installer, architects, builders, and specifiers can be assured of the highest standards of quality and service.

www.bufca.co.uk

The comfortable solution for warmth where you want it, when you want it... guaranteed

- ◆ efficient
- ◆ controllable
- ◆ professionally installed
- ◆ nationwide suppliers
- ◆ ideal for conversions & retrofits



electrical underfloor heating by

SPEEDHEAT

comfort from the ground up

Speedheat UK
Iona House, Stratford Road,
Wicken, Milton Keynes, MK19 6DF
tel: 01908 562211 email: info@speedheat.co.uk

www.speedheat.co.uk



VECTAIRE'S WHHRS – VERTICAL AND HORIZONTAL – CAN NOW BE COMMISSIONED VIA AN LCD SCREEN

The upright units – the Midis and the Maxis - offer the option of an integral LCD or a remote LCD commissioning unit, whilst the in-line EVO250 and Mini can be commissioned using a remote unit. The commissioning engineer is easily able to adjust unit functions including trickle, purge and boost speeds for each motor, the length of boost speed over-run time, the time delay before the boost speed kicks in, holiday mode, night-time boost inhibitor times etc. The user can see the speed at which the fan is operating, the relative humidity, and when the filters need replacing. The user can also set the unit to holiday mode for energy saving when the dwelling is empty. These units are among the most innovative, efficient and effective on the market today – and all are manufactured in the UK.



Web: www.vectaire.co.uk
Tel: 01494 522333

STOVES AND FIRES FOR HOMES WITHOUT A CHIMNEY

If you are looking for a heating solution that does not require a chimney, there are options available that provide a great alternative to woodburning.

THE ELECTRIC EFFECT

The obvious chimneyless installation is to go for an electric option. Whether freestanding, inset or wall-hung, there is an electric stove or fire for all kinds of home design – and all they require is a mains plug point to function.

Some electric stoves and fires emulate the striking look of a woodburning fire, with realistic logs glowing to imitate real flames. An electric alternative also eliminates the need to store logs or light fires, offering instant ambience in the home at the flick of a switch.

Many ultra-modern designs offer an alternative to classic fuel effects, with dazzling crystals and mesmerising colours taking centre stage. One example is the Vogue Midi electric stove from Gazco, which can be selected with realistic logs, but also offers the option to choose crystals instead for something a bit different. This stove also boasts 13 different fuel bed up-lighting colours, making for a relaxing environment that also suits any colour scheme.

If you want to make the overall look as real as possible, freestanding electric models can even be enhanced with details such as faux flue pipe, along with baskets of logs or log holders to complement the overall look.



A BALANCED FLUE OPTION

Many gas fires and stoves are available as balanced flue versions, negating the need for a chimney entirely. A balanced flue model requires a twin-walled pipe to vent directly to an outside wall. Air for combustion is drawn in through the outer pipe whilst the inner pipe removes the combustion gases to the exterior of the property. This removes the necessity for a chimney entirely.

Balanced flue gas fires and stoves come in all sorts of designs and sizes, giving you plenty of options to choose from. The Gazco Reflex 75T multi-sided fire is one example that can even be controlled via a remote handset allowing you full control of the fire from the comfort of a sofa.

With an EcoFlex gas saving mode, this fire also gives you the option to modulate the height of the flames, lowering gas usage while maintaining ultra-realistic woodburning flame visuals. This fire can also be controlled via WiFi connectivity, allowing you to control the fire through an innovative app.

WHAT IF I STILL WANT A WOOD BURNER?

If you want a wood burner, or a conventional flue gas stove, but your home does not have a chimney, there are options that may be available to you.

A conventional flue fire or stove requires a chimney or flue system in order to function. If you do not have a chimney, you may be able to have a pre-fabricated system installed which works in the same way a normal chimney would.

There are options for you to have one that either runs internally or externally to your property, and allows you to enjoy a stove or fire in your home.

With any options, visit your local retailer who will be able to advise which is best for your installation.

www.stovax.com





Firing imaginations for over 37 years



WOODBURNING | GAS  MULTI-FUEL | ELECTRIC

STOVAX | **GAZCO**
Fire Your Imagination

www.stovax.com



TWENTY GROSVENOR SQUARE, **MAYFAIR**

FINCHATTON

International design and development firm, Finchatton, has partnered with the world's leading luxury hospitality company, Four Seasons Hotels and Resorts, to offer the first standalone Four Seasons Private Residences. Located on one of London's finest squares in the heart of Mayfair, Twenty Grosvenor Square, A Four Seasons Residence will offer 37 luxurious residences of three, four and five bedrooms with interiors by Finchatton.

Once the Headquarters of the US Naval Forces in Europe, and from where General Dwight Eisenhower orchestrated the D-Day landings during the Second World War, Twenty Grosvenor Square is an address steeped in rich history.

This brand new building has been lovingly created behind the historical façade of Grosvenor Square to provide the highest standards of living available anywhere in the world. Masterful architectural detailing, both inside and out, draws from the rich history and context of the area.

Twenty Grosvenor Square has benefited from Finchatton's decade-long experience of designing and building some of the world's most exceptional homes. This unique opportunity, to re-create an historic icon in such a significant location, has allowed Finchatton to carefully choreograph a perfect sequence of spaces, from the grand entrance lobby and extensive amenity

areas through to each square foot of every individual residence.

Vast windows flood the rooms with natural light, while voluminous proportions and meticulously considered layouts create spaces that are grand and yet utterly warm and welcoming.

Jiin Kim-Inoue, Design Director at Finchatton, and the Finchatton team have harmonised understated and exceptionally crafted furniture with contemporary accessories to perfectly reflect the modern London aesthetic. The vision for Twenty Grosvenor Square; effortless elegance and timeless modernity, is reflected in the sophisticated colour palette of cool tones and warmer neutrals throughout.



VAST WINDOWS FLOOD THE ROOMS WITH NATURAL LIGHT, WHILE VOLUMINOUS PROPORTIONS AND METICULOUSLY CONSIDERED LAYOUTS CREATE SPACES THAT ARE GRAND AND YET UTTERLY WARM AND WELCOMING.





With an emphasis on traditional craftsmanship and exquisite finishes: silk rugs from Tai Ping, Loro Piana cashmere wall panels and De Gournay hand-painted silk wallpaper are just some of the finishes the Finchatton design team have travelled the world to source.

Serviced by Four Seasons and offering access to the many amenities of a Four Seasons hotel, the residences will bring together the best of Four Seasons exceptional service and private ownership, offering a luxury residential experience unlike any other in London. The 250,000 square foot luxury development will also include a private wine cellar, a spa with a 25m swimming pool, a treatment suite with steam room and sauna, a state-of-the-art fitness centre, games room, a cinema, a crèche, business suite, a garden room and private landscaped gardens.

Founded in 2001 Finchatton undertakes bespoke commissions to create the most exceptional homes in the world. Today, after over a decade at the pinnacle of luxury property design and development, Finchatton remains dedicated to pushing the boundaries of ever greater excellence and innovation.

SERVICED BY FOUR SEASONS AND OFFERING ACCESS TO THE MANY AMENITIES OF A FOUR SEASONS HOTEL, THE RESIDENCES WILL BRING TOGETHER THE BEST OF FOUR SEASONS EXCEPTIONAL SERVICE AND PRIVATE OWNERSHIP, OFFERING A LUXURY RESIDENTIAL EXPERIENCE UNLIKE ANY OTHER IN LONDON.

**Prices for a property at Twenty Grosvenor Square start at £17.5m
Contact for sales enquiries 0203 019 0630, 20gs.com
@finchatton**

Serica, the new standard in luxury super-matt



SILKY TOUCH



HIGH SCRATCH RESISTANCE



ANTI-FINGERPRINT



EXTREMELY FLEXIBLE



EASY REPAIR

-lamination

Serica is the ultimate premium finish and the latest addition to the dp-specialist range.

This robust PVC is silky smooth to touch and adds a luxurious supermatt statement when laminated double sided to MDF or dp-lite Hollowcore board. With anti-scratch and anti-fingerprint technology, Serica is designed to cover all types of furnishings in homes, offices and stores.

In case micro-scratches occur, the surface can be easily repaired using a simple iron. The PVC's resilient nature means it does not require a protective film, easing the manufacturing process. Available 1220mm wide and stocked in 11 unicolour designs as well as a further 19 colours deliverable on short lead times.

“The best performing super matt finish, setting a new standard on the market”

According to a leading European manufacturer of furniture frontals.

SERICA®

dp-specialist

Contact us for more information:

Century House,
Premier Way,
Lowfields Business Park,
Elland,
West Yorkshire HX5 9HF

t: +44 (0) 1422 658341
e: info@decorativepanels.co.uk
decorativepanels.co.uk



TRENDY PRODUCTS

Trendy Products has been a well-established e-commerce furniture retailer for over 12 years. Our online shop was born from a love of modern furniture, interiors and wanting to share our passion for having a lovely home. Following years of visiting European trade fairs and building strong relationships with some of Europe's top furniture brands we have developed a wide selection of contemporary designer furniture ranging from mid to high end prices. Company owner Karen Bucceri had spent many years developing businesses both in the UK and Italy so her expertise combined with a love of all things interiors was the perfect match to create Trendy Products. Based in Italy Karen is right on the forefront of the latest trends from Italian brands and frequently visits neighbouring countries in Europe to find the newest luxury designs to bring to the UK.

When we reached our 10-year anniversary we decided it was time to do something a bit different and find out what Trendy Products was missing. We know that not all our customers like to shop purely online from the feedback we received, so the natural next step was to open a furniture showroom - somewhere to showcase our designer furniture brands and let our customers feel and touch the products we love so much. We noticed that within our home town of Cardiff there was a limited supply of furniture showrooms that sold furniture like ours, we started as mainly Italian designer based with a big focus on high gloss and crisp style but have developed into so much more covering many contemporary styles within the high-end furniture market.

We really wanted to make our showroom different and provide our customers with the experience we want for ourselves when shopping for furniture. We chose the destination of Cardiff Bay to appeal to customers coming from over the Severn Bridge down the M4, as well as clients from the Vale of Glamorgan and more locally in Cardiff. The 5-minute distance from the St David's hotel and beautiful views from the full width windows in the showroom all add to the experience. We also based our head office right within the showroom so our customers can not only have the great experience of talking to our sales team but also get to meet everyone working behind the scenes making the website, showroom and logistics happen. We really drive team spirit within Trendy Products and everyone within the team shares the same passions to deliver great furniture and a great customer experience.

The really special feature of the showroom is the digital concept. With over 10 years' experience of working in the digital world of retail, we wanted to bring this into our new home and give our customers the opportunity to shop our website directly from the showroom using large screens, tablets and digital advertising. Whether our customers want to browse the website in the showroom independently in our website experience area or take a seat on our fantastic bestselling Fama Spanish sofa, with the guided help of the team to shop the website on our big screen TV's we've got the digital side covered.

It's not just a place where you come to shop but where you can sit down, have a glass of wine and go through one of our many designer furniture catalogues. We want to provide a lifestyle experience to our customers and invite them to come in, talk to our friendly team and enjoy the furniture as they would do if it was in their own home.

We know that having a website with 10,000 products can sometimes be tricky to navigate and find exactly what you're looking for, so we have showcased some of our bestselling furniture pieces in the showroom. However, you can also shop our full range by using either the digital concept shopping experience or sitting with the team to go through the catalogues.

Our team have all been individually trained to know everything about our products, from the material and quality to finding what you will love out of the 10,000 items we have on our website. With over 70 brands ranging from living room, dining room, home office, bedroom and everything else in between its so easy to create the complete Trendy Products look in your home.

www.trendy-products.co.uk
0345 299 4211
enquiries@trendyproducts.co.uk
Unit 4, Havannah Street
Cardiff
CF23 7FD

Opening hours
9.00am – 5.30pm Monday – Friday
10.00am – 5.00pm – Saturday

SALICE LAUNCH 'EXCESSORIES'

– THE NIGHT COLLECTION

Salice opens a new world of elegance and refinement, enriching its existing wide products range, with the launch of Excessories, its first collection of accessories designed specifically for bedrooms.

An infinite variety of solutions designed to optimise space and to facilitate the perfect arrangement of wardrobe interior fittings, offering infinite possibilities of exquisite style and convenience. Excessories - Night Collection allows wardrobes and walk-in wardrobes of all styles to accommodate elegant hangers, scarves and tie hangers, bag hangers, cotton garment holder bags, trouser hangers and shoe racks, all elements of singular refinement and efficiency. Furthermore, Glovebox trays, watch-holder trays, ring-holders and earring-holders are all available in various dimensions, multiple finishes from fabrics to leather and a variety of beautiful colours from Racing Green to Maron (brown) and luxurious rich cream. To complete the Excessories collection, an elegant drawer system, finished in Titanium which co-ordinates with Salice's Titanium hinge, is available in three heights and can accommodate base panels in 18mm and 12mm wood-based material, or 4mm glass. They are also available with premium leather inserts if desired. A fixed shelf system, fully compatible with the drawer system, is available with adjustable integrated lighting.

Commenting on this exciting new addition to the Salice range, Walter Gosling, UK Branch Director said, "Our new Excessories - Night Collection is a very high-end market product. The accessories



are so elegant that they work well in luxury hotels and high end retailers. In addition, we also anticipate demand from bespoke manufacturers working with interior designers whose brief it is to offer something exquisite and unique".



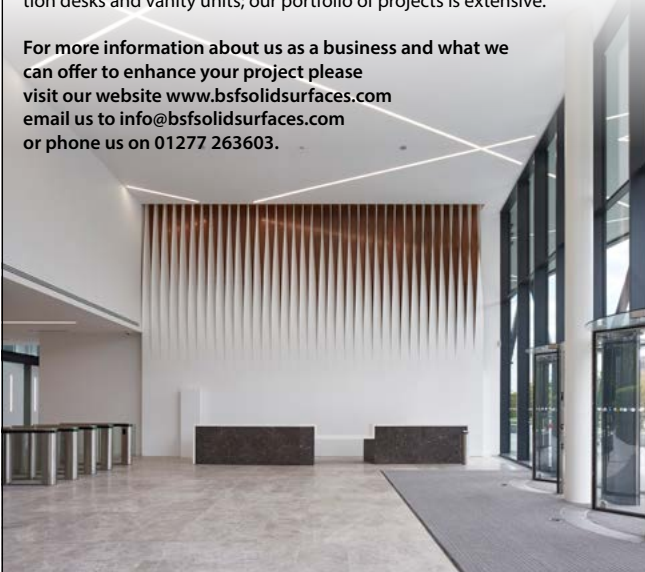
For further information on the Salice product range please telephone 01480 413831, email info.salice@saliceuk.co.uk or visit www.saliceuk.co.uk



BSF Solid Surfaces are an approved Specialist Fabricator of all major brands of Solid Surface, which is a versatile, man-made material, these include Dupont Corian, LG Hi Macs, Staron, Hanex and Avonite. BSF Solid Surfaces Ltd is a family run business, which prides itself on its quality and customer service.

We have worked on a number of prestigious projects, including Forbury Place (shown in the picture) where we were commissioned to produce wall cladding, with thermoformed, curved "propeller blades" shown as a curtain, fixed floor to ceiling, produced in LG Hi Macs, in front of the wall already clad with Hi Macs. This is just one example of the type of specialist project we have been involved with. We also produce counter tops, reception desks and vanity units; our portfolio of projects is extensive.

For more information about us as a business and what we can offer to enhance your project please visit our website www.bsfsolidsurfaces.com email us to info@bsfsolidsurfaces.com or phone us on 01277 263603.



WELSH SLATE TURNS ITSELF INSIDE OUT

New coffee table-style brochures showcasing Welsh Slate products for interior as well as exterior applications have been launched by the leading UK manufacturer.

Available through www.welshslate.com, the eight-page brochures dispel the myth once and for all that Welsh Slate, part of the Breedon Group, is just about roofing, with stunning photographs proving the product's versatility for a wide range of uses.



Both beautifully illustrated brochures talk briefly about the company's quarries in North Wales, including Penrhyn at Bethesda and Cwt-y-Bugail in Llan Ffestiniog, being a focal point for the production of UK natural stone for the past 700 years - the slate's 500 million-year-old pedigree is reflected in the fact it is still handcrafted.

Although both show the range of colours (Penrhyn Heather Blue and Grey and Cwt-y-Bugail Dark Blue Grey) and finishes (riven, honed, flamed and machined) there the similarity ends.

No matter inside or out, the brochures reinforce Welsh Slate's suitability for a wide range of contemporary and heritage architectural and interior design uses due to its aesthetics, durability and low maintenance.



INGENUITY HOUSE

◦ SHEPPARD ROBSON

Sheppard Robson, with its interior design group ID:SR, has completed the 12,000m², highly sustainable building for the FTSE support services and construction firm Interserve. The building has instigated a cultural shift for the company, consolidating four satellite offices into one collaborative atmosphere, which is centred on a dramatic, open, central space.

Whilst the interiors are warm and civic, the external of the building – sitting close to the high-speed railway network HS2 – has been designed as a brave architectural form.

The uncompromising, stepped structure acts as a catalyst for the transformation of the area of the city and is a key element of the region's regeneration strategy.

The structure of the BREEAM Excellent building, and the spaces it creates, are a direct response to the two over-arching ambitions for the project: environmental performance, with the sustainability agenda revolving around robust, carefully calibrated passive measures such as the self-shading form; and interactivity, with the building co-locating its regional team into one place for the first time.

The exterior of the building is defined by an undulating, anodised aluminium facade, creating an 'object' building that is a marker for the ambitious change planned for the area. The building is surrounded by heavy infrastructure and industrial sites, and has very few contextual or architectural cues. Therefore, the boldness of the form and materiality is a statement of change, which is anchored to its surroundings by a podium and landscaping.



THE BUILDING HAS INSTIGATED A CULTURAL SHIFT FOR THE COMPANY.

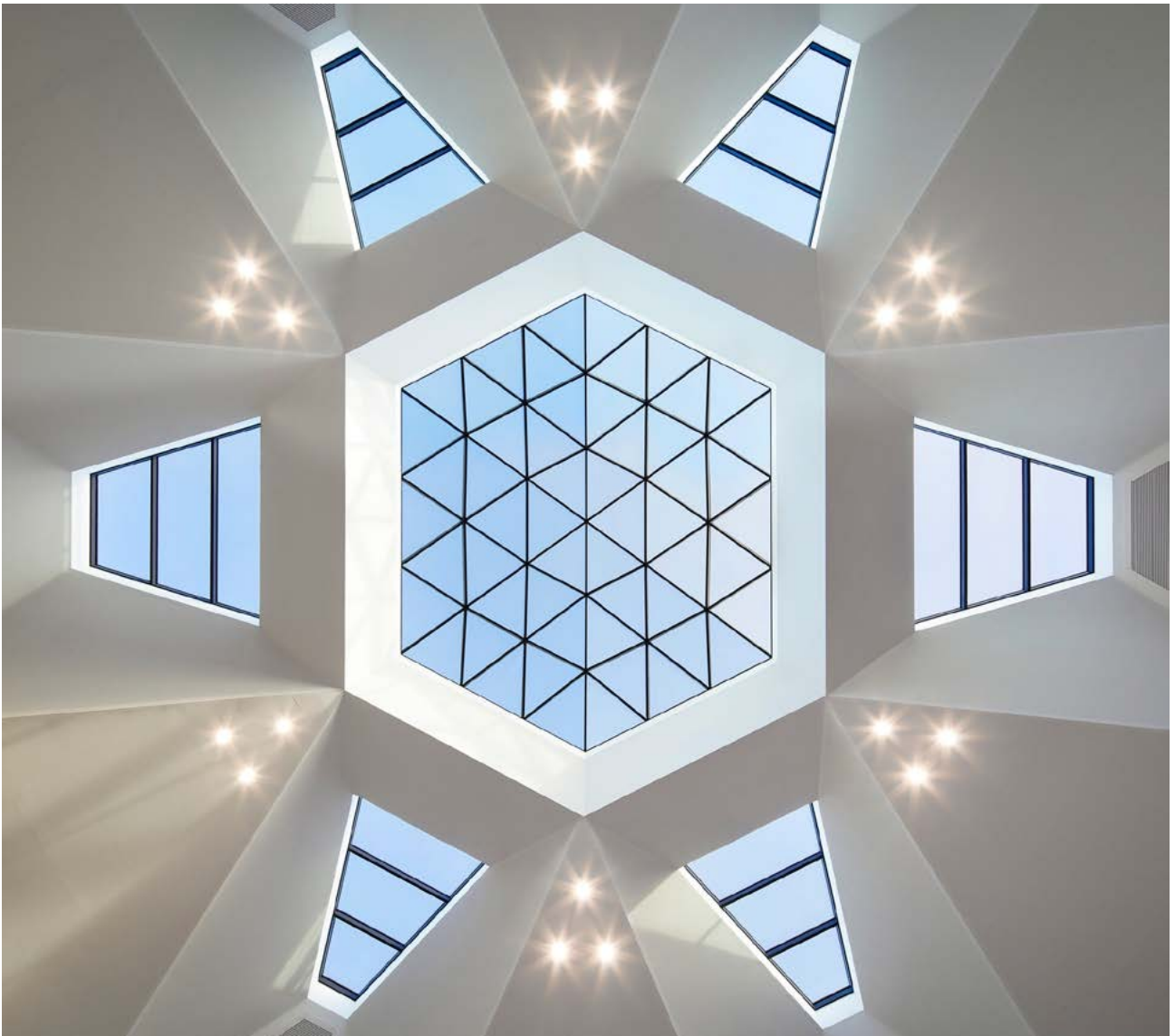
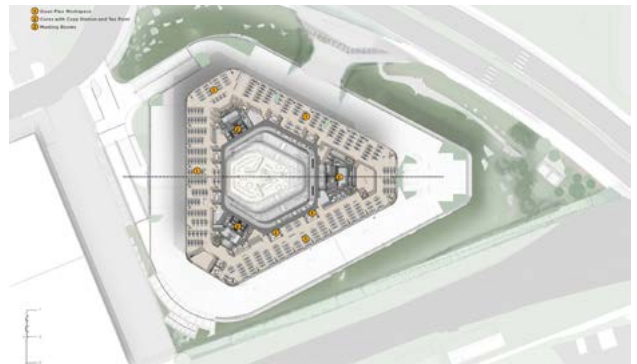
LOCATION

The triangular-shaped building reduces the mass of the structure externally, whilst internally, the plan creates the feeling of a continuous loop that promotes a sense of openness and encourages interaction. The triangular atrium at the heart of the plan builds drama, with the central stairs as the primary route through the building, prioritising physical movement rather than the use of lifts. This composition results in an incredibly compact plan, bringing people closer together and sparking interaction.

The interiors are organised as four levels, all similar in size, which step out around a central atrium. This form characterises the building's external identity, with the overhangs naturally shading the structure all year round, whilst also shaping the visual and physical permeability of the interior spaces.

Each floorplan is arranged in the same way, to provide a range of work settings. On the outer perimeter is desking for more focused tasks, whilst more informal meeting spaces line the central space. This creates a series of stepped terraces that line the vast open space, animating the internal atrium, promoting visual connections throughout the building and adding a sense of theatre to the expansive central atrium.

www.sheppardrobson.com



BESPOKE HOME ENTERTAINMENT ROOMS TO BRING MUSIC AND MOVIES TO LIFE

Loud & Clear's bespoke music, cinema or media rooms enhance the home entertainment experience by placing the customer (and their family and friends) right at the heart of any performance. From their extensive showrooms in Glasgow and Edinburgh, Loud & Clear has been designing and installing premium home entertainment spaces for over twenty years.

The Loud & Clear consultants start every project with an in-depth design consultation and then prepare a detailed specification covering the technical aspects of the project (screen, projector, amplifier, loudspeakers and cabling). They then suggest mood lighting, acoustic treatments and control systems to perfectly match the space and the user's needs. They can also advise on the aesthetics of the room – providing guidance on fabrics, furnishings and colour schemes.

Loud & Clear treat every project as if it was for their own home and only recommend class-leading products. With a complete stock of high-end turntables, amplifiers, streamers, hi-fi speakers, invisible speakers, electric blinds, 4k projectors, Atmos sound systems, lighting controls, acoustic treatments and control systems, they have a product for every need.

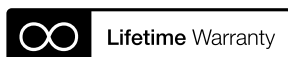
Working alongside an architect, interior designer, or directly with the customer, Loud & Clear bring the absolute best of entertainment into the home.

For more information: www.loud-clear.co.uk



Super Slim In-wall Speakers

These discreet Super Slim In-wall Speakers deliver Monitor Audio's signature sound from a mounting depth of just 50 mm / 2". The WSS130, WSS230 and WSS430 enable hi-fi levels of performance in spaces where no high-quality speaker has gone before.



monitoraudio.com



HARTLEY  BOTANIC

HANDMADE WITH PRIDE SINCE 1938

HANDMADE IN ENGLAND



Bespoke Victorian Glasshouse, Lingholm Estate, Keswick, Cumbria

For our Sale offers please call 0800 783 8083
or visit www.hartley-botanic.co.uk

NOTHING ELSE IS A HARTLEY

The only aluminium glasshouses and greenhouses
endorsed by the RHS

© The Royal Horticultural Society 2018 Endorsed by the Royal Horticultural Society
Registered Charity No 222879/SC038262 rhs.org.uk





The Complete Green Solution

Scotscape is an innovative landscape construction company.

We offer the complete green solution to property developers seeking to improve their landscape, gardens, roofs and walls to meet green targets and create healthy buildings for residents, staff or customers of commercial property.

Our services include the design, installation and maintenance of exterior and interior living walls, green roofs, hard and soft landscaping and landscape maintenance. In addition our knowledgeable team designs bespoke smart green solutions to fit any brief.



scotscape.co.uk

We work with architects, designers and property developers to create the complete green solution. To find out more book our Living Walls CPD with Niall.Mcevoy@scotscape.co.uk or contact our friendly team of experts for advice via enquiries@scotscape.co.uk.

UK MANUFACTURERS OF STREET FURNITURE



- POSTS - HINGED & TELESCOPIC
- BOLLARDS - STEEL & STAINLESS
- HOOPED BARRIERS
- CYCLE STANDS & RACKS
- CYCLE SHELTERS
- HEIGHT RESTRICTORS
- SWING GATES
- ARM BARRIERS
- SMOKING SHELTERS
- SEATING

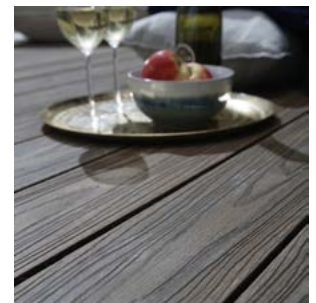
AUTOPA



Composite Prime®

Naturally Evolved

ARCHITECTS ARE BEING DRAWN to Composite Prime's® HD Deck® and HD Fence ranges, utilising the latest composite technology to produce a long life, low maintenance, slip-resistant material which outperforms traditional treated timber.



Highly attractive, it's also environmentally friendly, containing FSC® 100% certified hardwood timber and recycled plastics. Composite deck boards, available in different colours, easily replace worn timber boards using the existing frame at 300mm joist centres.

annual maintenance and treating. Unique Dual sided colours allow decks to be laid with contrasting colours.

HD Deck 150® offers a contemporary look, longer life and reduced maintenance over traditional timber.

Also among the naturally evolving range is extra-strong decking, HD Deck® XS.

HD Deck Dual® uses the True Grain™ colour system to create the look and feel of traditional timber without

With over 70 stockists nationwide, Composite Prime® is now one of the largest suppliers of composite products in the UK.

Composite Prime®:
0113 426 2770
hello@composite-prime.com
www.composite-prime.com



01788 550556
info@autopa.co.uk
www.autopa.co.uk

AUTOPA Limited, Cottage Leap, Rugby, Warwickshire, CV21 3XP

ECODEK - THE BRITISH MADE COMPOSITE OUTDOOR FLOORING COMPANY WITH REAL ENVIRONMENTAL COMMITMENT



**MADE IN
BRITAIN** 

British manufacturer Ecodek have been producing their unique Wood Polymer Composite boards system for over 14 years. In 2017 alone, the production of ecodek® material consumed more than 3600 tonnes of recycled plastic milk bottles and sustainably sourced hardwood fibres.

ecodek® boards are available in three profiles, two finishes and five colours, so suitable for a huge range of applications both commercial and residential.

ecodek® can be found across the UK and beyond, in public realm areas such as walkways, bridges, schools, care homes, stadia, restaurants – the list goes on.

With the versatility to adapt to urban or traditional design schemes, ecodek® decking systems will allow the designer to transform outdoor spaces and gardens into feature areas. For podium decks and balconies, we have produced a range of specific screws, substructure bearers and beams that take into consideration the change in outdoor temperature and weather.

In addition, ecodek® is prevalent in the major housing developments across London in balconies and roof terraces. With a high material stability that has negligible expansion or contraction, ecodek® offers the perfect choice for balcony applications.

Offering bespoke lengths to suit individual projects in both our AT and HD ranges means a welcome relief on site to the usual problem of waste materials. As ecodek® material is 100% recyclable, should any waste be generated on site, this can be bought back by the company and put back into the production of new boards.

The boards will not warp, splinter or rot, and as ecodek® does not promote mould or algae growth, only require minimal maintenance, and do not require sanding or sealing.

ecodek® material comes with a 25 year warranty as standard, giving piece of mind to both specifier and end user.

A recent life-cycle assessment considered the manufacture of ecodek® (from cradle to factory-gate) showed that it's production had a net effect of removing carbon dioxide from the atmosphere rather than adding to it – hence *carbon negative* - a huge achievement in modern manufacturing and one that clearly illustrates the company's environmental credentials.

Ecodek are members of Made in Britain, an organisation established to promote and support British manufacturers, and proudly bear the Made in Britain Marque.

ecodek® AT and HD Reversible Grooved Ribbed boards are available in bespoke lengths and five colours (Pebble Grey, Slate Grey, Black, Dark Brown and Light Brown).

ecodek® Heritage Woodgrain Effect boards are available in standard 3.6m lengths and five colours (Pebble, Welsh Slate, Highland Basalt, Pennine Millstone and Brecon Shale).

www.ecodek.co.uk

01978 667 840

enquiries@ecodek.co.uk

ecodek®

SUSTAINABLE OUTDOOR LIVING.

The durable and sustainable *alternative*
to hardwood and hollow decking

High quality, British made Wood Plastic Composite
ecodek® contains 55% sustainably sourced hardwood and
40% HDPE recycled polymer and is 100% recyclable

Bespoke lengths minimise waste

Solid boards that will not splinter or rot

Carbon negative production

Low potential for slip wet or dry

Low maintenance

25 year warranty



01978 667 840
enquiries@ecodek.co.uk
www.ecodek.co.uk



GRANNY PAD

BEST PRACTICE ARCHITECTURE



Across the country, many families are struggling with the same difficult question: How can you best support aging family members when you live in a city with minimal housing options? Best Practice Architecture has offered a brilliant solution to issues around multigenerational living and urban density with their latest Seattle project.

The firm was hired by a Seattle homeowner to create Granny Pad: A spacious living quarters converted from a backyard garage. The residential addition was built to give the aging family member a safe and well-designed home, bring childcare to the growing family, and to maintain privacy for everyone involved.

SECTION PERSPECTIVE

Located just north of Seattle's University District, Granny Pad is a 571 square foot detached dwelling transformed from an existing garage into a lofty, open living space.

The project began when the client couldn't find appropriate housing for "Granny" in their neighborhood. With a growing family, they didn't have enough space in their house to accommodate her needs and maintain the privacy everyone in the family wanted. And with a shortage of affordable housing in Seattle, the option of moving to a larger house in the city was out of reach.

That's when Best Practice stepped in. The firm saw converting the client's existing garage (previously used as storage) as the perfect solution. Design considerations included looking at the project on both a short-term and long-term timeline. First, Best Practice needed to address the immediate needs of the client. They also considered future uses of the space as a possible rental unit, studio, office or other income generating project for the family. And they needed to do all of that using just 571 square feet.

To accommodate the decreased mobility associated with aging, the living area needed to be one level. Rather than make several small rooms, the team opted to create open, central spaces that can be easily adapted to changing mobility issues. Carefully placed windows and skylights provide lots of daylight. Rafters

were left exposed in the ceiling. The existing garage door was removed, and the old structure became the entry, kitchen and sitting room. A short walk through the entryway reveals the bedroom, closet with laundry and bathroom. A lofted space above the bathroom (accessed by a ladder) will be used as storage for the time being, but can easily be transformed into an office or sleeping loft in the future. All of these details come together to create a soaring, open feeling that makes the relatively small footprint of Granny Pad feel much larger.

Behind the structure sits a private back deck which connects to the loft space. The yard itself had a natural 6 foot elevation change when Best Practice began the project, which inspired the firm to build Granny Pan into the hill itself. And the bunkering made the loft an easy—and natural—addition.

With unique and forward-thinking design, Best Practice was able to provide their client with the perfect solution for their current housing needs and a world of possibilities for their future.

www.bestpracticearchitecture.com



CAREFULLY PLACED WINDOWS AND SKYLIGHTS PROVIDE LOTS OF DAYLIGHT.

The Professional's **DOWNLIGHT**



NEW additions

to our range of energy efficient, fire-rated LED downlights providing the solution for any installation

Fixed fittings | Adjustable fittings | Tri-LED | Single point source | Plaster-in downlight
Colour switchable | Dim to warm | Low glare (UGR 14) | High efficacy | Insulation coverable

For more information contact us at collingwoodlighting.com or on 01604 495 151



Mastering light together

collingwoodlighting.com



COLLINGWOOD
LIGHTING



NEW Controls for Simply Saving Energy

DANLERS Limited have recently launched an extensive range of reliable, easy to install, controls for Lighting and HVAC including:

NEW HIGH BAY CONTROLS An extensive range of controls suitable across a wide spectrum of high bay applications.

NEW EASYZAPP SWITCHING CONTROLS Remotely programmable PIR Occupancy switches by mobile phone / tablet from up to 100m away. Standard ceiling flush or surface mount and high bay mounting options.

NEW EASYZAPP DIMMING CONTROLS Remotely programmable controls suitable for either DALI, DSI or 1-10VDC dimmable ballasts. Easy to install, easy to configure. Standard ceiling flush or surface mount and high bay mounting options.

NEW DAYLIGHT LINKED DIMMING PIR SWITCHES With adjustable run-on for lower light level when areas are not occupied. Versions for DALI or 1-10VDC ballasts. Standard ceiling flush or surface mount and high bay mounting options.

CONTACT US FOR THE LATEST DETAILS.

DANLERS

DANLERS Limited, Vincients Road, Chippenham, Wiltshire, SN14 6NQ U.K. Tel: 01249 443377. E: sales@danlers.co.uk

www.danlers.co.uk



inox
LIGHTING
INNOVATORS

DESIGN

SUPPLY

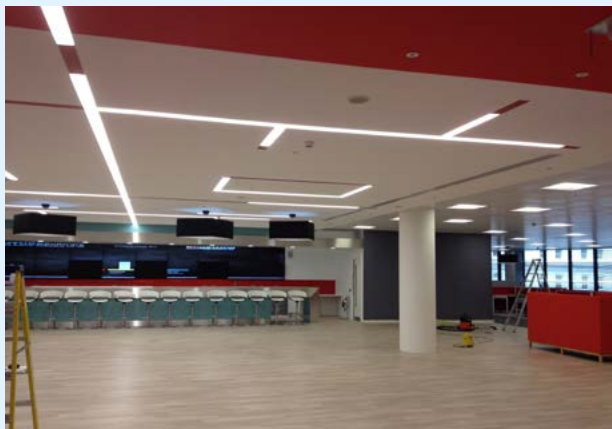
SUPPORT

T: 01702 468165
E: sales@inox.co.uk
W: www.inox.co.uk

Unit 22 Brookside Centre
Sumpters Way
Southend-on-Sea
SS2 5RR

Specials Lighting Design Ltd

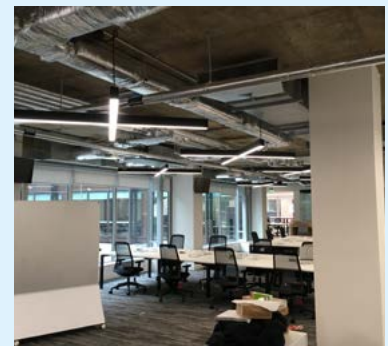
UK based Lighting Company with 25 years experience in supplying standard and purpose made lighting solutions for the Commercial market.



www.specialsighting.co.uk
Tel:01277 363636

Specials
LightingDesign Ltd

UK based Lighting Company with 25 years experience in supplying standard and purpose made lighting solutions for the Commercial market.



www.specialsighting.co.uk
Tel:01277 363636



KEMPER SYSTEM TOPS LONDON'S **BEST NEW EXTENSION**

Kemper System has helped to create an award-winning home extension, featuring a unique swooping roof structure.

Designed by architects Tonkin Liu, the 'Sun Rain Room' forms part of the restoration of a Grade II Listed Georgian townhouse in London and features the work of local craftspeople. The building is also home to architects Anna Liu and Mike Tonkin and provides a studio for their practice.

A 'GOOD PLACE ON A BAD DAY'

The two-storey extension reframes the rear of the building and features a new garden room offering living space and a meeting area for the studio. A mirrored wall in the covered outdoor area beyond conceals a workshop, cooking area, tool shed, store, and deep planter for the small trees in the green roof above. Below the patio, the existing basement has been extended to create a bedroom, two bathrooms and an enlarged plant-filled lightwell.

One of the most striking features of the new extension is a curved, 10m-long roof, which dominates the space and frames a bean-shaped courtyard. A pipe runs down the building's rear wall to meet the new roof. When rainwater gathers at the top of the townhouse it falls through the pipe and follows the roof's curving leading edge to a spout over a long rainwater harvesting tank. The tank floods the patio at the push of a button, transforming it into a reflecting pool.

ROBUST AND FLEXIBLE WATERPROOFING

Structurally, the roof is unique as it has been built using layers of 6mm plywood, which sandwich an insulating core and allow for 25 circular skylights. A thin steel support post hidden within the glazing framing allows the roof to apparently span free over the space.

Given the unusual shape and style of the roof structure, Kemper System's Kemperol 2K-PUR was specified for the waterproofing.



Odourless and solvent free, the liquid waterproofing system was installed by north-London based roofing contractors Liquid Waterproofing Ltd. It was applied directly onto the 110m-thick plywood structure, in a single wet-on-wet process using a reinforcement fleece. Once cured, the system formed a seamless, elastomeric waterproof membrane which bonded directly to the substrate.

Tony Mctigue director of Liquid Waterproofing Ltd said: "The steep slope and curves on this unusual roof demanded a very easy to apply and durable waterproofing solution, so Kemperol was ideal. As it is laid using a roller and wet-on-wet, we were able to install it quickly and effectively including around the detailing, specifically the circular lighting units.

"As the structural concept hadn't been tried before, the roof was carefully load tested using bags of water. As Kemperol has excellent elasticity this also provided the assurance that the waterproofing would not be affected if there was any movement."

A COMPLETE SOLUTION

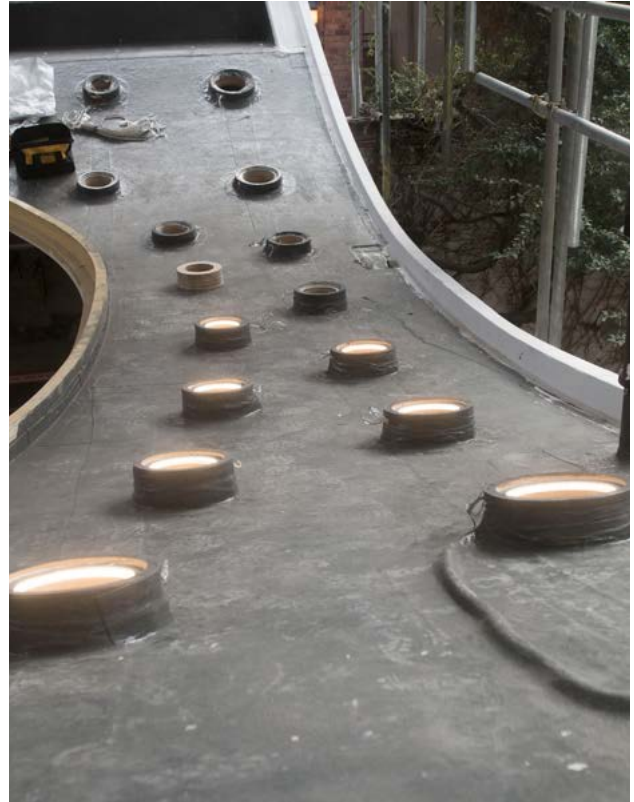
After the Kemperol 2K-PUR had been applied, it was topped with richly planted sedum. However, as parts of the roof's perimeter remained visible, Kemperol Reflect was also applied. This is a white waterproofing system comprising special liquid synthetic properties which reflect UV and infrared radiation away from the roof, ensuring the surface temperature remains cooler than when using traditional darker roofing materials.

Stuart Hicks from Kemper System commented: "Kemperol provided a perfect membrane for the green roof and will provide long-term protection, ensuring this stunning structure retains its impressive appearance for many more years to come.

"As the property is in close proximity to a number of neighbours and is also used as workspace for the architectural practice, which remained operational throughout the project, the fact Kemperol 2K-PUR is odourless and solvent free was another major benefit."

The Sun Rain room has won multiple awards including being named the overall winner of New London Architecture's prestigious Don't Move, Improve! awards in 2018, which showcase the Capital's best and most innovative new home extensions.

www.kempersystem.co.uk



KEMPEROL® Liquid Waterproofing

Long term protection for flat roofs, buildings and critical structures

Warm roofs, inverted roofs, green roofs, podium decks, walkways, balconies, terraces, car parks...

- No hot works
- Sustainable
- Solvent-free
- Odourless

Whatever your requirements, we have a certified and proven solution to meet your needs.

Contact us to discuss your next project.



FREE
Site Survey &
Quotation Service
enquiries@kempersystem.co.uk



KEMPER SYSTEM UK
Tel: 01925 445532
enquiries@kempersystem.co.uk
www.kempersystem.co.uk

 **KEMPER
SYSTEM**
Kemperol Liquid Waterproofing

WINTECH TESTING & CERTIFICATION

Wintech Testing & Certification are one of Europe's leading Curtain Wall, Rainscreen Cladding and Window & Door testing facilities, with decades of knowledge and experience in the façade industry. Testing is generally undertaken in accordance with European and International Standards, including CWCT (Centre for Window and Cladding Technology), and BS EN 13830:2015 Curtain Walling – Product Standard. A typical test sequence for a Curtain Walling System or a Rainscreen Cladding System would include the following:

- Air Permeability
- Watertightness (Static & Dynamic)
- Wind Loading (Serviceability & Safety)
- Hose Testing
- Impact Testing
- Controlled Dismantle & Report

In addition to their UKAS Accredited testing services, Wintech have also developed the unique WinMark™ UKAS Accredited Certification Schemes for the Enhanced Security of Windows & Doors and the Performance of Curtain Walling & Rainscreen Cladding Products, the later scheme helps demonstrate compliance with NHBC Standard, Chapter 6.9, soon to be followed by a similar scheme compliant with Premier Guarantee Technical Manual Section 7.7.5. Wintech are the only company in the UK to offer Curtain Wall & Rainscreen Cladding Testing and Certification as a package from the same location.

Gary Sherrard, R & D Design Engineer, of Hydro Building Systems UK Limited, has had recent experience of testing both Windows & Doors and Curtain Wall products at Wintech's state-of-the-



art testing facilities in the heart of Shropshire, near the famous Ironbridge, the Birthplace of Industry. When asked why Hydro Building Systems UK Limited chooses Wintech for their testing needs, he told us "That's an easy one, it's the people and level of service they provide. Whether it's flexible dates for testing, or finalising the test report, the level of service from start to finish is exactly what Hydro Building Systems UK Limited have come to expect in today's fast-paced digital environment".

To find out more Testing or Certification or both, call Wintech's friendly and highly experienced team.

T: 01952 586580

E: testing@wintechtesting.com / certification@wintechtesting.com

W: www.wintechtesting.com



WINTECH
TESTING & CERTIFICATION

CWCT Facade Testing & Certification without the stress!

Our WinMark™ Certification Scheme for the Performance of Curtain Walling & Rainscreen Cladding Products is NHBC & Premier Guarantee Compliant



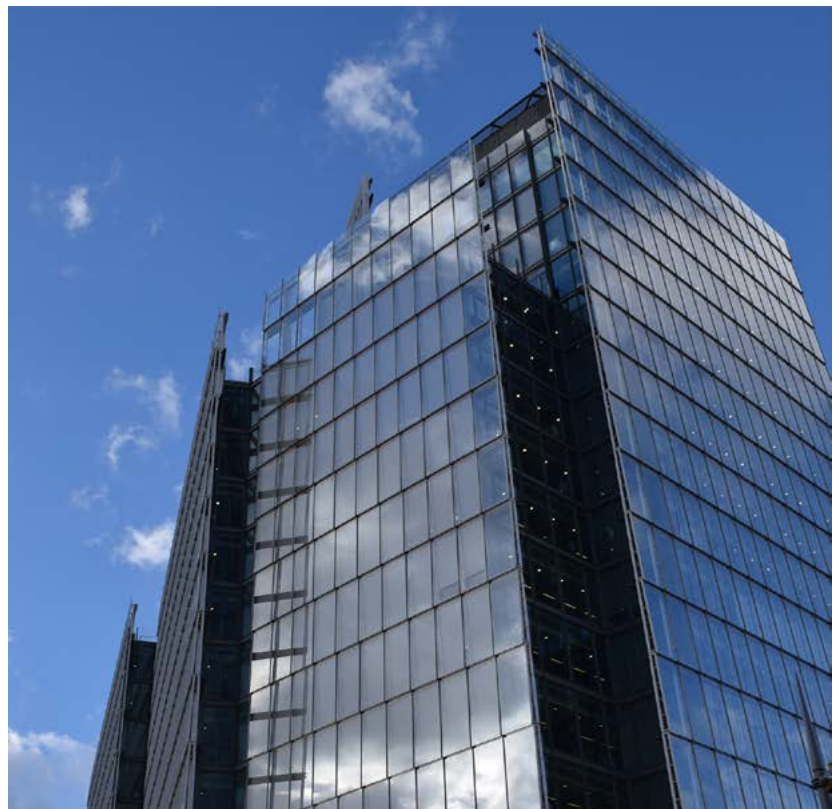
01952 586580



www.wintechtesting.com



sales@wintechtesting.com



Meet our MD Gailord Nepp at BAU 2019 - Call now to make an appointment





AWARD-WINNING USE OF PERFORATED METAL

A unique auditorium for the Faculty of Humanities at the Uppsala University campus stands out like a precious jewel among the surrounding traditional buildings. The architects chose RMIG ImagePerf to reproduce the work of artist Ann Lislegaard, resulting in a unique and breathtaking facade for the auditorium.

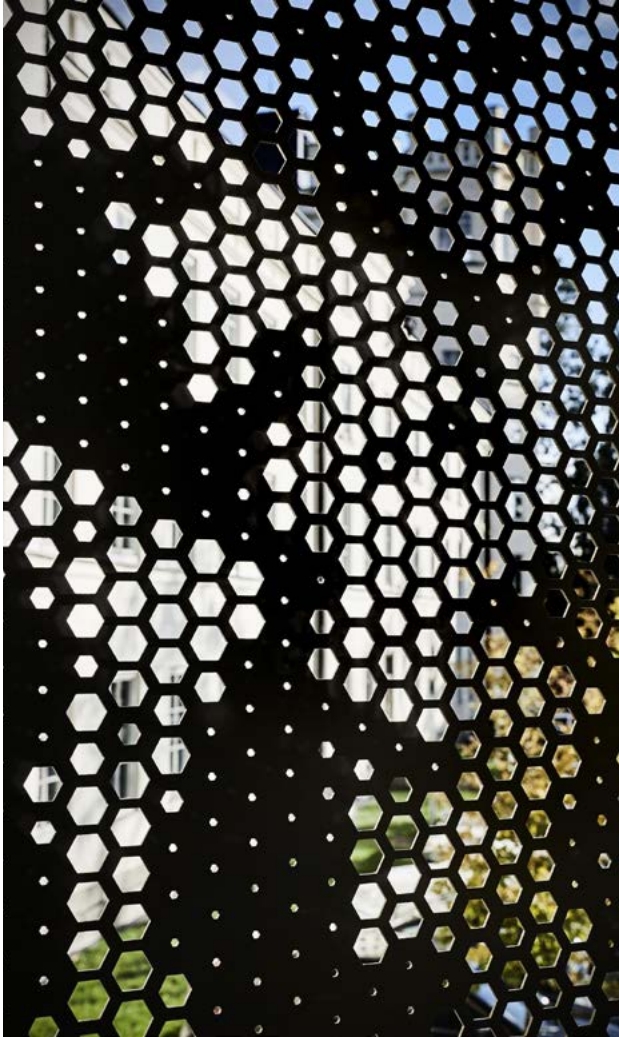
The auditorium for the Humanities – Humanistiska Teatern – is now being used for various events at Uppsala University in Sweden. It is situated in the part of campus called The English Park and consists of two separate building blocks, one for administrative offices and one for the auditorium itself. The Swedish architect firm, White Arkitekter, designed both the office building and the auditorium.

Whereas the office building merges with existing buildings on campus, the horseshoe-shaped auditorium stands out as a powerful symbol of humanistic activities and events at the university. It is equipped with state-of-the-art audio-video technology that allows everyone to express their opinions and be heard both inside the auditorium and around the world. This unique arena encourages participation and exchange, thereby achieving its goal of creating social connection.

For the architects, it was important that the uniqueness of the building was reflected through both its interior and exterior design. Therefore, they chose an untraditional approach to the construction of the facade and joined forces with an accomplished artist as well as world specialists in perforated metal at RMIG.



ARTWORK REPRODUCED WITH PRECISION Danish-Norwegian artist Ann Lislegaard was commissioned with the task of designing the artwork for the facade of the oval-shaped building. She developed an intricate, abstract pattern of circular shapes that was – in part – inspired by the natural images drawn by internationally acclaimed Swedish botanist Carl von Linné. Ann Lislegaard's vision was converted into digital format and the image was then reproduced by means of picture perforation.



The use of perforated metal and the technology behind picture perforation were of great interest to the architects. RMIG ImagePerf is part of the RMIG City Emotion concept and presents elegant and innovative solutions to the challenges of architectural design by converting perforated metal into a 'projection screen' for art, photographs, illustrations and graphic designs.

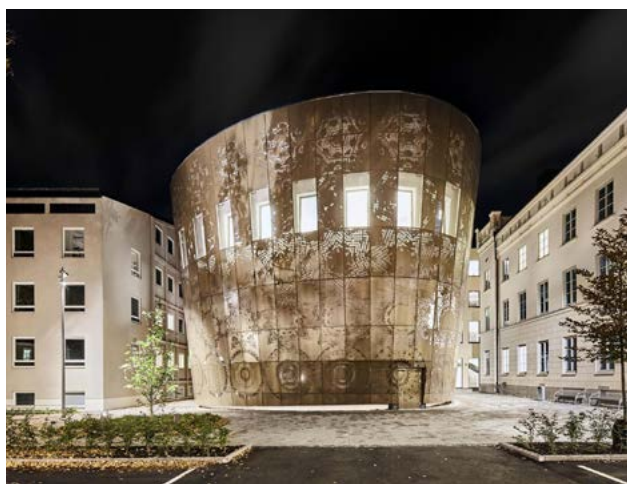
ALUMINIUM WITH HEXAGONAL HOLES

The artwork of Ann Lislegaard was to cover a total of 800 m² enclosing the whole building and to accomplish this, the intricate pattern she created was transferred to 308 aluminium EN AW-5754 sheets, with a thickness of 3 mm. The artwork was reproduced with hexagonal holes in the aluminium sheets and the sheets were subsequently powder coated in a bronze colour to give the facade a warm hue when displayed in daylight.

In addition to the picture perforation and powder coating, RMIG was also responsible for bending and numbering the perforated metal cassettes to make them ready for delivery and to ensure a time-saving process once the installation had begun.

MULTI-PURPOSE FACADE CLADDING

Once installed, the aluminium cassettes serve several different purposes. Firstly, they are a large-sized canvas for the unique artwork of Ann Lislegaard. The successful transition of her vision to the large-scale facade provides guests and passers-by with a vibrant blend of graphic poetry and inspiration from one of Sweden's great scientists.



The cassettes also serve as an elegant and discreet solution to the challenge of mounting sun screens on a building without making the solution visible and 'technical'. The cassettes are mounted 500 mm from the outer wall of the building and provide shade without consuming extra energy or requiring supplementary installations.

Finally, the picture perforation technology forms the perfect platform for a creative LED-lighting solution that accentuates the building further and helps create a unique ambience when darkness falls. Perforated metal is ideal in connection with tailor-made lighting when the goal is inspiring, creative and varied facades and other urban installations. In Uppsala, the LED-lighting behind the perforated facade varies in colour to change the 'mood' in a refined way that compliments the aesthetics.

THE FIRST AWARD IS ALREADY A REALITY

The bronze-colour coated cladding with the integrated LED-lighting solution is made of robust materials that can withstand the Nordic climate and the shifting weather conditions. It is also a creative statement at the campus in Uppsala and as such it has already won its first award. PLÅT18 (SHEET18) is a Swedish architectural prize with the purpose of promoting the use of metal sheets in the architecture of the future. The judges awarded White Arkitekter this prestigious prize for the innovative use of perforated metal and for the building's unique connection between academic traditions and a digital future.

www.rmig.com
Email. info.uk @rmig.com
Tel: 01925 839610

SCOTSCAPES LIVING WALL SYSTEM – FIRE RETARDANCY

Safe building practices have been reviewed by the Department for Communities and Local Government to ensure best practice in the retro-greening market regarding the fire rating compliance of green roofs and living walls. These guidelines outline the fire retardancy requirements for the installation of living walls on buildings. We are happy to announce that the Scotscape Fytotextile living wall system rates at Class 0 making it one of the safest living wall systems currently available for retro-greening projects.



Being certain during the specification process that the safest levels of compliance have been met for fire retardancy is crucial for architects, property developers and designers alike - we are delighted to be able to fully support this important requirement.

You can learn more about the details of our Fire Retardancy ratings by visiting www.Scotscape.co.uk where you can download full guidance on our testing and additional information about the Scotscape Living Wall system.

To book a CPD with Scotscape contact cpd.training@scotscape.co.uk




FRONTIER PITTS
PROTECTING YOUR WORLD

WWW.FRONTIERPITTS.COM

PAS 68
TERRA QUANTUM SIDE FOLDING BOLLARD

T: +44 (0)1825 764737
E: info@appeng.co.uk
www.appeng.co.uk

Applications Engineering Ltd, 16 Horsted Square,
Bellbrook Industrial Estate, Uckfield, East Sussex, TN22 1QG


APPLICATIONS
ENGINEERING LTD

DUAL PORT FIRE SPRINKLER VALVE SET

- Dual ports that enable the flow switch to be mounted on either side.
- Available with optional CPVC mating sockets.
- 100% pressure tested.
- 1" and 1 1/4" full bore test valve
- Easy access for servicing





BESPOKE GARDEN STRUCTURES FROM OECO GARDEN ROOMS

Oeco Garden Rooms have been manufacturing and installing timber framed structures for over 10 years. They specialise in building bespoke garden rooms, offices and studios for those who want to extend their living space for a multitude of uses.

Made from a traditional timber frame construction, concrete pile and steel foundations, these garden rooms are built to last and can be year round. Western red cedar external timber cladding finishes off the look, providing rich and varied browns, reds and pinks making each garden room unique.

Our bespoke garden room service allows you to decide on site where you want the windows and doors, switches, lights and sockets and allows our installers to run any additional wiring such as internet, telephone or alarm cables inside the walls.

Visit www.oecogardenrooms.co.uk or contact one of our sales team on 0800 170 1270 for more information or to request a brochure.



Has Christmas decorating whetted your appetite for a new home look? How about a new staircase? With Pear Stairs, it is quick and easy to design your own and have it delivered to your door.

Pear Stairs design, manufacture and deliver premium bespoke staircases to meet the individual needs of each client. Whether you be a home owner, or a property professional; Pear Stairs will provide a precision crafted, easily installed, high quality staircase at a phenomenal price.

Pear Stairs provide free instant quotes through their online staircase design tool, Stair Creator, which renders your dream staircase in full 3D. They are also FSC certified, sourcing timber from responsibly managed forests.

Pear Stairs also sell a large range of stair parts. To find the ideal design or parts for you, visit Pear Stairs online, or to discuss your staircase requirements, call their team of friendly designers.



01938 553311
www.pearstairs.co.uk

www.neatwoodhomes.co.uk



NEATWOOD HOMES Ltd

The Ultimate Choice In Timber Frame Construction

A company with a knowledge base exceeding 40 years of experience in the designing and manufacturing of Timber Frame Packages for the Domestic, Commercial and Leisure markets.

Our Dedicated Team are ready and waiting to help you with your build now !!!

Flexibility, quality and personal attention at all times.



Services

- ▶ At Neatwood Homes sales office Introduction & Guide to building your Dream Home
- ▶ Computer Aided Design (CAD) service available
- ▶ Free quotation provided with detailed breakdown of costs
- ▶ Supply only or supply & Erect
- ▶ Extensive range of products Including External & Internal Joinery Packages
- ▶ All designs individually certified by a qualified Structural Engineer
- ▶ All components supplied to NHBC requirements
- ▶ Delivery Program to suit your Build





Individual Service
Technical Excellence
Precision Manufacturing
Quality Products





Member




member



FABRIC FIRST
Structural Timber Association

Unit 6, Westwood Industrial Estate | Pontrilas | Herefordshire | HR2 0EL
Tel: 01981 240860 | sales@neatwoodhomes.co.uk



SCIENCE GALLERY LONDON

↳ LTS ARCHITECTS



A significant new addition to the cultural landscape of the UK's capital; Science Gallery London is an extraordinary project that fuses the innovative programme of Science Gallery International with the research strengths of King's College London. LTS Architects was appointed by the client, King's College London to design the new Gallery and unlock the full potential of the site. Housed within the Grade II* listed Boland House, part of the original Guy's Hospital, opposite London Bridge Station, the Gallery will engage visitors with a programme blending science, art, and technology.

The building has an inward-looking Georgian façade, but the brief demanded permeability and openness to draw in foot traffic from the neighboring station. The client required a flexible, adaptable space, clear navigation of the entrance and ease of access for temporary exhibitions.

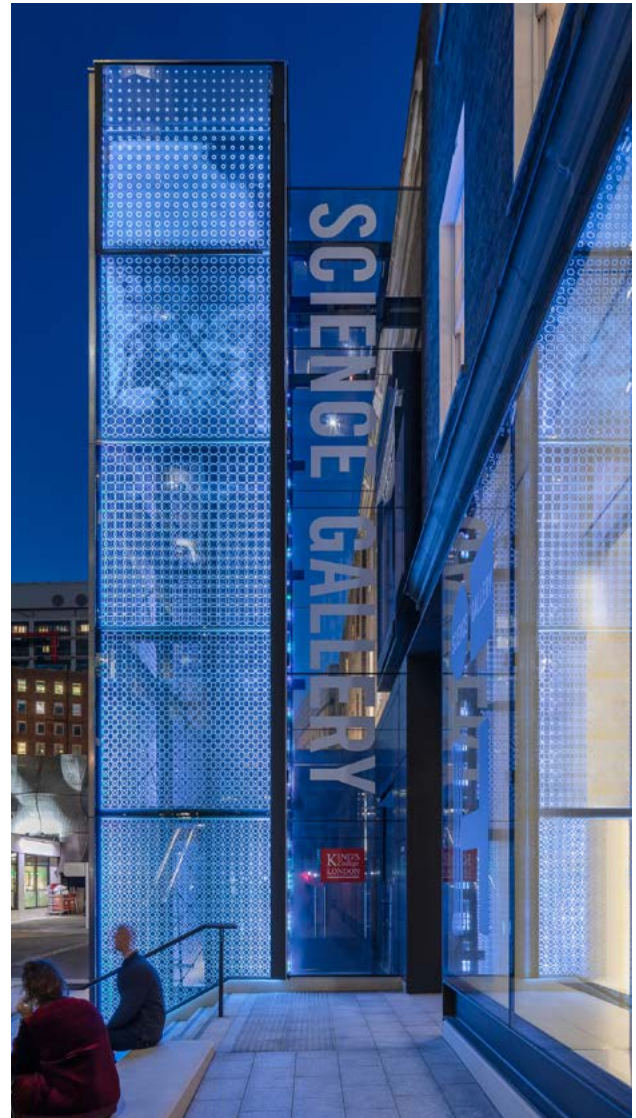
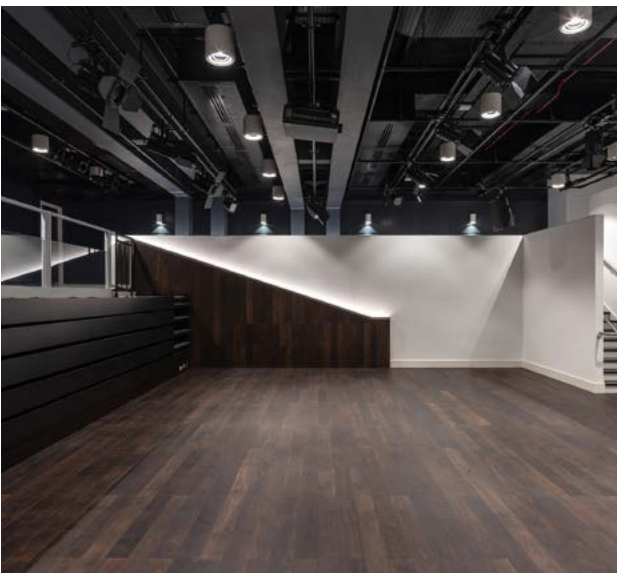
Given the historic sensitivities of the site, it was a refurbishment driven by balancing the simple functional requirements of the brief with the complexity of working with a listed building. The architectural response opens up the building, positioning the main entrance within the streetscape, rather than inside the courtyard and carving out a large glazed opening from the masonry façade to act as a 'shop front' revealing the exhibitions and activities within.

The interventions are sympathetic to the original building, using the same palette of materials as the listed facade, yet stretching and molding them into an entrance sequence formed of contemporary architectural elements. A long cast stone seat wall draws visitors into the Gallery from the north and completes the Portland Stone plinth of the building. The goods lift tower, fundamental to the workings of the gallery, is placed within the street, cloaked with dynamically edge lit lasered glass panels. The long seat wall folds from outside to in, allowing a seamless transition through the

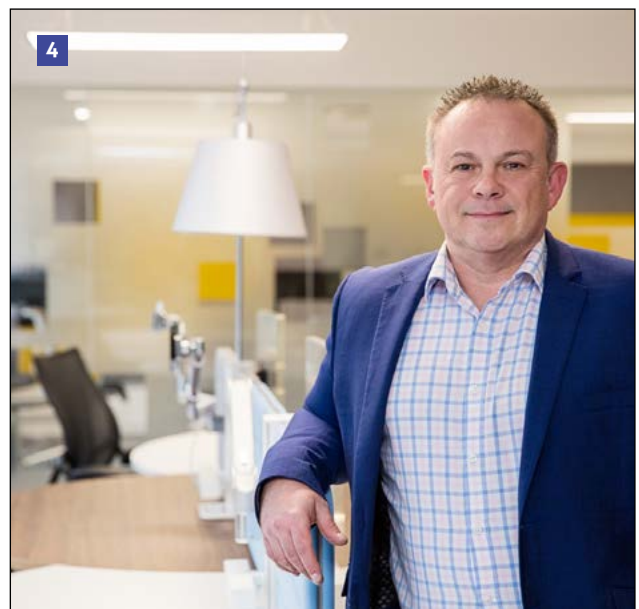
generous main atrium into the Gallery which stands more than a meter above street level. In a deliberate move, it addresses a natural axis with the underground station exit which realigns the Gallery entrance with one of the oldest thoroughfares in London - Great Maze Pond.

Inside the volumes are open and continuous with spaces that can be lit, closed off or opened up at the whim of a curator. This enables ultimate flexibility so that the galleries can change their aspect completely from one exhibition to the next. The ground floor, which is used as a café space and shop by day can be reconfigured with ease to turn into an events space at night. The project also provides a lecture and performance theatre and events facilities as well as a re-imagined Georgian Courtyard which will house cultural and academic events. The Courtyard was previously used as a car park but is now a fully restored and accessible public square.

www.lts-architects.co.uk



THE BUILDING HAS AN INWARD-LOOKING GEORGIAN FAÇADE, BUT THE BRIEF DEMANDED PERMEABILITY AND OPENNESS TO DRAW IN FOOT TRAFFIC FROM THE NEIGHBORING STATION



1

IMPERIAL THERMAL ENGINEERING'

Imperial Thermal Engineering's Etorch and Epot are a quantum leap forward in the preparation and handling of modern bituminised rubber compounds (hot-melt) and sheet material. This equipment has been developed to eradicate the use of propane gas on construction sites. Powered by 3 phase electricity the Etorch and Epot have been designed to replace conventional gas fed roofers equipment.

The Etorch and Epot deliver unrivalled, controllable, temperature and performance, in the melting and handling of bitumen compounds, in the delivery of super-heated air to dry up wet and cold surfaces, and to fuse sheet material.

For more information and a demo visit www.imperialthermal.co.uk or call 01376 330582

2

PATIOSCOPIC

PatioScopic telescopic conservatories are created for both residential and commercial markets, offering an attractive design and wide choice of colours, to blend in with the surrounding environment.

A PatioScopic conservatory allows you to increase the usable space for your home or business. They can be open and closed in a matter of seconds as the weather and temperature changes.

PatioScopic commercial telescopic conservatories are an excellent investment for cafes, restaurants, hotels and bars looking to expand their dining space externally, but are faced with the fluctuations of the British weather!

For further information, or to request a brochure, please call 0800 804 8025, email sales@patioscopic.co.uk or visit patioscopic.co.uk

3

LEDYNERGY (DISPLAYS) LTD

Electronic Message Display Systems are now a part of everyday life, from Full Colour Information and Advertising Boards, Production Monitoring and Safety Displays to Transport Signs, Retail and Video Scoreboards. Modern technology and latest manufacturing capabilities have produced displays that are extremely cost conscious as well as being high quality. The LEDsynergy have been installing displays for more than 35 years and their LED Display Systems are probably the most advanced available and can convey vast amounts of information with high brightness LED characters in Full-colour, housed in standard or bespoke casings the displays can be simply controlled by many communications methods.

For more information on optimizing your communications potential call LEDsynergy on 01264 303030 or visit the LEDsynergy website at www.LEDsynergy.co.uk.

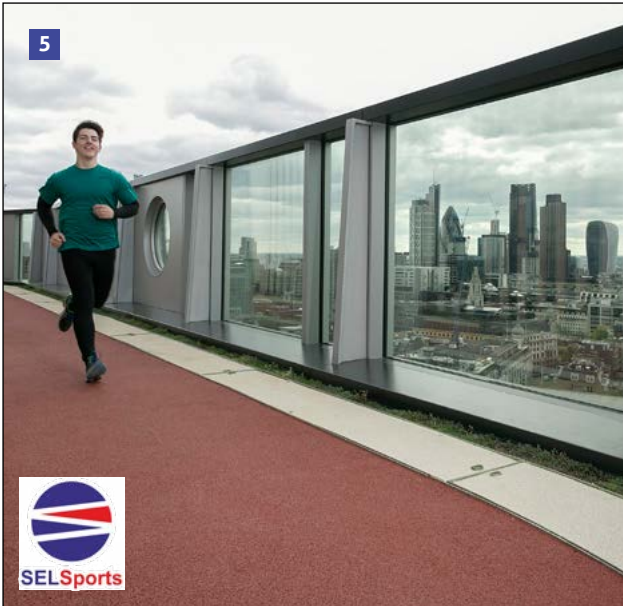
4

OFFICE PRINCIPLES APPOINTS DETAIL AND BUILD DIRECTOR

Award-winning design, fit out and workplace consultancy, Office Principles is strengthening its detail and build arm with the appointment of Ken Malpass as Business Unit Director. Ken has been recruited to head up this already successful division, adding weight to the existing team as this area of the business continues to enjoy rapid growth.

The company has completed over 90 significant projects, fitting out over 660,000 sq ft of office space in the last two years, and has evidenced a strong focus on projects that have been designed to RIBA stages two and three during this time. With Ken on board, Office Principles expects to benefit from the rising trend and grow its market share.

For further information on Office Principles and its services, visit www.officeprinciples.com



5

SELSPORTS

SELSports designed, supplied and installed this rooftop running track around the perimeter of the 16th floor of the White Collar Factory (winner of the MIPIM UK Visionary Building of the Year 2016) for office workers to exercise. The track was constructed using SELSports' lightweight plastic drainage cells for efficient shallow rainwater management and to prevent standing water on the running surface and a permeable RBG layer for an EPDM running surface. This solution is ideal for MUGA, playdecks and recreational zones situated on roofs. SELSports is a division of SEL Environmental Ltd, a specialist water management company with over 20 years of industry experience. SELSports combine precision design and quality construction to guide projects from concept through to completion.

www.selsports.co.uk

6

BATHE BATHROOMS

It all started in 2004. We were offered this old shoe shop in Amersham. We had never been to the area before so were a little apprehensive, however, 15 years on, we have grown and become a part of the community, working with many established contractors designing, supplying and installing the smallest cloakroom to the most extravagant bathrooms, not only locally, but throughout Buckinghamshire, Hertfordshire, Berkshire, London and beyond. Experienced and personable, let us take care of helping you with your dream bathroom – no matter what size or what budget – pop in and say "Hi!".
Bali, Jags, Alex and Lynne.

29 Chesham Road
Amersham
Buckinghamshire
HP6 5HN
01494 722330
sales@bathebathrooms.com
<http://www.bathebathrooms.com/>

7

HEADLINE: TOWARDS ZERO CARBON WITH HERSCHEL INFRARED DESIGNER HEATING

Herschel Infrared heating delivers a low energy, electric heating solution for a sustainable future. Herschel Infrared provides efficient heating solutions using radiant technology, one of the oldest forms of heating known to man, to store heat in the fabric of the building as thermal mass. This is slowly released and 'topped-up' to maintain comfort levels, thereby using less energy than convection heating. With discreet, space-saving heaters on offer plus a range of stylish finishes that add design and elegance to an interior, Herschel has the solution. As building design improvements continue to minimise heat loss, energy requirements are lowered, making the case for low capital outlay and simple to install Herschel heating even more compelling.
www.herschel-infrared.co.uk
info@herschel-infrared.com

8

THE SKY'S THE LIMIT AS SUNSQUARE LAUNCHES WORLD-FIRST SPACE-SAVING ACCESS SKYLIGHT

Sunsquare has launched a world-first access skylight that offers architects a space-saving alternative to large sliding models – making it perfect for winter and spiral staircases and for projects where external space is at a premium.

The British manufacturer's new Aero Dual flat-roof skylight not only maximises roof space, but it features UV-neutral, laminated glass for best-in-class quality and safety – and delivers unparalleled overall thermal performance.

For more information about the new Sunsquare Aero Dual skylight, or any of the products in the company's portfolio of market-leading flat-roof skylights, please visit: www.sunsquare.co.uk or call 01284 846579.



9



10



11

GLASSTABLES
ONLINE



12

SAP
PCDB
Listed

attenuation

9

SELECT INTERIORS 'BONDS' WITH LEADING ARCHITECT AT HISTORIC MANCHESTER SITE

Design and fit out company Select Interiors has completed the fit out of architectural practice Levitt Bernstein new offices in Manchester's Bonded Warehouse. Owned by property development and investment company, Allied London, the building is set to be one of Manchester's coolest private office developments. The Bonded Warehouse is located in the St John's area of the City and stands proud as a landmark building, reflecting the industrial past of the area and its heritage.

Select Interiors originally launched in Manchester over 31 years ago as a retail and commercial fit out contractor. Since then, the company has evolved and grown to include a range of design and consultancy services.

For further information, visit www.select-interiors.com

10

DALLMER LTD

The perfect balance of aesthetics and function is created by the CeraWall Individual shower channel. Minimalist in design and with an integrated slope, it ensures reliable drainage. The 'barely there' shower channel is available in a range of finishes including top quality matt stainless steel as well as three different PVD-coated options, opening up a wealth of possibilities for bathroom design. A virtually invisible transition between the floor and wall can be created with one of three cover plates depending on the type of tiles used. Together with the DallFlex drain body, and its choice of build heights, CeraWall Individual is suitable for both new builds and renovations, and is very simple to clean.

Dallmer Ltd
01787 248244
www.dallmer.com

11

GLASS TABLES ONLINE

Glass Tables Online is a long-established online furniture business offering a range of high quality glass tables. The contemporary styling of our products instantly create a sense of light and space. Manufactured from 12 mm glass provides function and durability. Glass Tables Online lend interiors a clean, modern aesthetic which reflects light to stunning effect. Our contemporary range of tables blends effortlessly into either commercial or residential interiors.

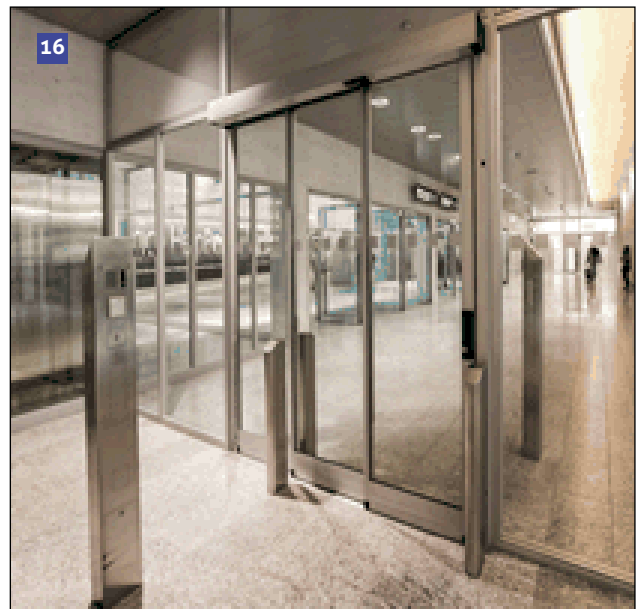
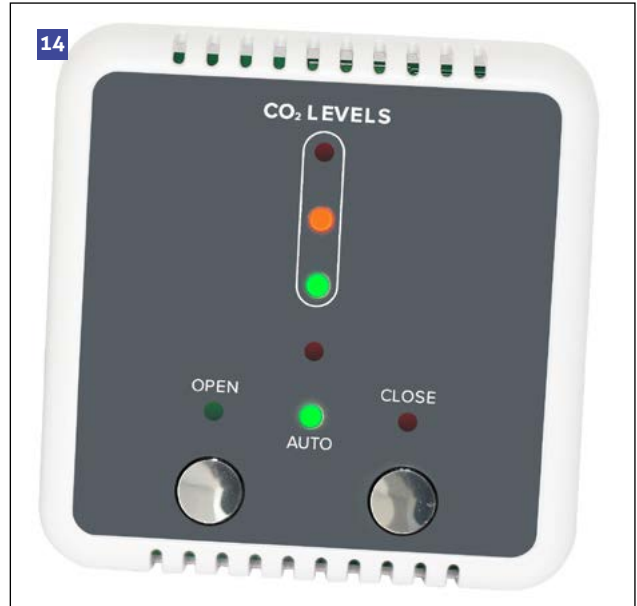
Call us on 0844 3300132
See our fullrange at glasstablesonline.co.uk
info@glasstablesonline.co.uk
Follow us : add twitter and facebook
Twitter link : @glass_tables or https://twitter.com/glass_tables
Facebook : <https://www.facebook.com/Glasstablesonline-304909416202189/>

12

VECTAIRE

Vectaire has three new models in their vertical whole house heat recovery range. To ensure a comfortable user experience, the Midi, Maxi and Maxi Plus are now available with advanced acoustic attenuation. They are lined with superior sound deadening materials for really low sound levels (the sound pressure levels are down to 14.4, 13.2 and 14.4 dBA respectively). The efficiency and performance remain the same. All these "AT-BY" models are complete with summer bypass and frost-stat, and commissioned via an integral LCD. Functions, including trickle, purge and boost speeds for each motor, boost speed over-run time, the time delay before the boost speed kicks in, holiday mode and night-time boost - all easily adjusted. Products are SAP PCDB Listed and manufactured in our own factory in the UK.

www.vectaire.co.uk



13

PROVIDING POOL SAFETY TO THE LEISURE INDUSTRY

Experts in the wet leisure sector with 20 years' experience in designing and supplying drowning detection and risk reduction systems

SPSC is the exclusive distributor of AngelEye Computer Vision drowning detection systems for the UK, Ireland, UAE and Canada

AngelEye creates an alarm if a pool user is in a life-threatening situation beneath the surface of the water. When the alarm is activated an image and location will be transmitted to a smart device held by the lifeguard/ responder. Future proofed design using state of the art technology.

Adjutor House, 3A Dixon Way,
Lincoln, LN6 7XN, UK
T: + 44 (0) 845 8620040
E: info@spscuk.com
W: www.spscuk.com

14

THE SMART NEW WAY TO ACHIEVE GREATER CONTROL OF NATURAL VENTILATION

The innovative i-Con Room Sensor provides automatic louvre control with manual override. The smart, modern design, in anthracite grey with chrome open/close push buttons, and traffic lights of CO2 levels, enables visual indication and control of space CO2/temperatures to ensure that good air quality is maintained. The i-con room sensor is easy to install, with an intuitive user interface and controller for use with the site wide BMS and compatible with most louvre manufacturers product. Specifying the i-con from Clarkson Controls will help reduce energy and improve indoor air quality, full data sheets are available to view or download online at: www.clarksoncontrols.co.uk or call 01562730874 for more information.

Designed by Control Engineers for Control Engineers

15

A BRAND NEW LOOK FOR CISTERMISER'S INFRARED URINAL FLUSHING CONTROL VALVE

Cistermiser have updated their market-leading IRC® infrared urinal flushing control valve, with improved aesthetics and an array of practical new design features.

"The IRC® is one of our best-selling products and builds upon the quality and innovation our installers and specifiers have come to expect from Cistermiser over the last 40 years," says Managing Director David Jones. "We are proud to design and manufacture in the UK and the new IRC® demonstrates this. You could say that the best has just got better. We are confident that the enhanced design features of our new-look and improved IRC® will continue to help building owner clients to save both money and precious water resources for many years to come."

<https://www.cistermiser.co.uk/>

16

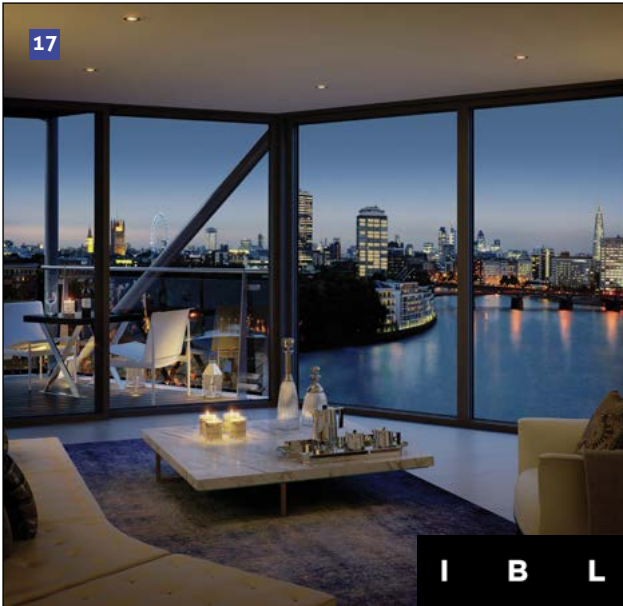
GILGEN DOOR SYSTEMS

Setting new standards since 1961, Gilgen have led the industry in setting new standards in door automation. High quality Swiss design and innovation combined with a meticulous eye for detail means our door systems offer unrivalled performance, durability, functionality and style. Our automatic doors are designed, manufactured and installed to EN16005 guidelines.

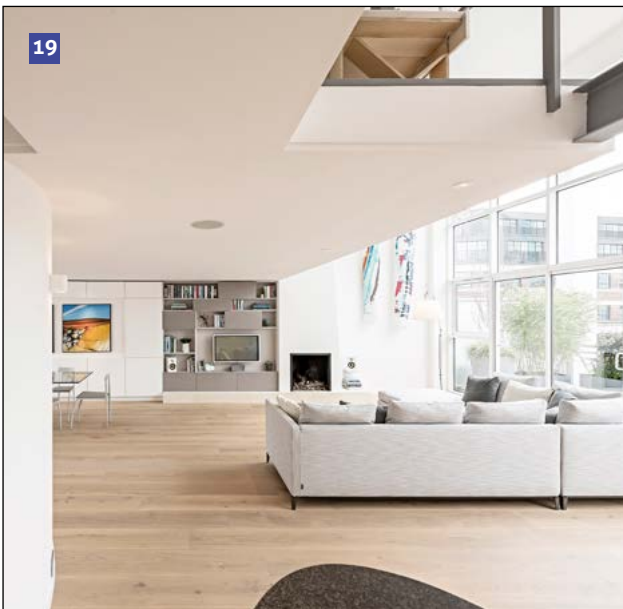
Gilgen specialise in manufacturing and installing automatic doors into the following sectors- hospitals, care homes, colleges, retail, residential and offices.

0870 000 2424
info@gilgendoorsystems.co.uk
Gilgen Doors Systems UK Limited
Securiparc House
Wimsey Way
Alfreton
Derbys
DE5 4LS
www.gilgendoorsystems.com/en-gb

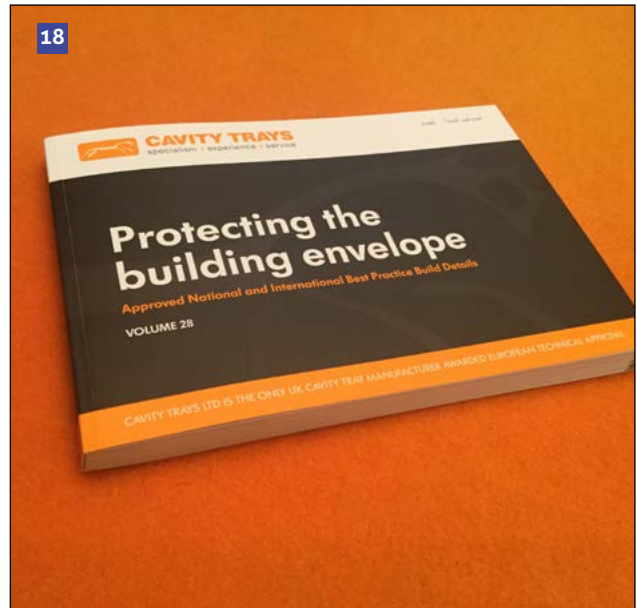
17



19



18



20

RETANOL XTREME

THE ADDITIVE FOR SAND AND CEMENT

GERMAN TECHNOLOGY FOR SCREEDS

- No curing required
- Dry in 72 hours
- 40-60N/mm² strength
- German market leader
- TUV Certified
- Impressive track record



WWW.PCT-CHEMIE.CO.UK

TEL: 0151 345 7390

EMAIL: INFO@PCT-CHEMIE.CO.UK

PCT CHEMIE

17

IBL LIGHTING

IBL Lighting are innovators and leaders in the development of architectural lighting. Established in 1986 in the UK, IBL has expanded internationally over the last 30 years, now with offices in London, Australia and Hong Kong.

IBL Lighting is featured in projects across the globe, including Barangaroo in Sydney, Australia, Blue Water Dubai, the Hilton Amsterdam in Holland, the Unilever Head Office in Jakarta, DFS in Singapore and NARS stores in Shanghai, China.

IBL Lighting are recognised as pioneers in the development of architectural lighting and lighting equipment. We are inspired by our clients and are constantly evolving and designing products to increase the scope for innovative fittings utilising the latest technology.

www.ibl.co.uk

18

NEW 2019 TECHNICAL MANUAL IS EXTENSIVE, INFORMATIVE & CONTAINS EXCELLENT CONSTRUCTION SOLUTIONS

The new 2019 Technical Manual 'Protecting the Building Envelope' and contains 190 pages of national and international best practice build details.

This latest publication addresses construction details from ground to rooftop, and lists new products and solutions including the Protective Adjustable

Threshold that recently won the Housebuilder/HBF/NHBC award for Best New Building Product of 2018. Cavity Trays of Yeovil is the longest-established specialist in its field, and the only UK cavity tray manufacturer awarded European Technical Approval. Cavity Trays approved products are accompanied with a performance warranty for the benefit of Architect, Builder and Client. Specify Cavity Trays of Yeovil to secure.

www.cavitytrays.com

19

ANYA FENNET DESIGN

Ania Choroszczynska is the Owner and Founder of London leading Interior Design company Anya Fennet Design. Anya Fennet Design was developed out of a passion for natural elements, the outdoors and the freedom of space.

Her style is very much a combination of cubic architecture and flowing organic forms. Anya focuses on transitional spaces, and design elements that focus on human wellbeing and mindfulness.

Over more than 12 years of experience in interior design, Anya has created elegant interiors for world-renowned hotel brands and now works with prime construction companies. She can act as a Project Manager for luxury private clients and developers.

office: 020 8810 0450
mob: 07863 879 863
email: design@anyafennet.com
www.anyafennet.com

20

RETANOL XTREME DELIVERS SIGNIFICANT PROGRAMME SAVINGS AND OFFERS

- 48 hours drying time for tile finishes, 72 hours for all other floor finishes
- C40 N/mm² to 60 N/mm²
- F6 N/mm² to 8 N/mm²
- 80-90% of final strength reached in 4 days
- Bonded screeds from 15mm, unbonded/floating screeds from 35mm
- Very low tension so cracking is minimised
- No curing or fibres required
- Excellent workability and long workable life
- Foot traffic after 24 hours and site traffic after 48 hours
- Excellent UFH thermal conductivity (= 2.35 W/m²K)
- Safe to use – Retanol is the only screed additive recognised under EU standards as having no negative impact on human health

www.pct-chemie.co.uk



21

MAGPLY BOARDS FRONT SIP SOLUTION FOR STUDENT ACCOMMODATION ON THE SOUTH COAST

A high rise development in Bournemouth for Fresh Student Living is making full use of the technical benefits to an innovative BBA approved structural walling system, which features 9mm Magply boards for both the inner and outer faces to the insulated panels' design. It has been built by main contractor, the Watkins Jones Group, with MIB Façades being the specialist sub-contractor erecting its own SIPs system.

While many such composite walling solutions use OSB or particleboards to sandwich a foam insulation core, the MIB MetSIP is much more robustly engineered, with 75 mm deep cold-formed steel Sigma studs – plus a 45mm treated timber packer - at 600mm centres.

www.magply.co.uk

22

ISOPRO® AND ISOMAXX®

Concrete Balcony Connection Systems offer the best insulation performance, with higher load capacity and faster Installation.

- Cost-effective, high-quality performance components
- Faster installation with no need to tape joints.
- Blank inserts of the same insulation material to optimize design/cost
- Easy to cut to length when needed
- No moisture absorption by the insulation layer to reduce thermal performance.
- Very low deflection at the connection to the structure

For more information and advice please contact J&P Building Systems Ltd.

www.jp-uk.com

23

BALCON™

Steel Balcony Connection System offers easy balcony positioning tolerance with excellent load capacity. Thermal insulation performance to meet part L.

- Designed for your specific balcony to concrete connection.
- Cost-effective, high quality components
- Excellent thermal insulating properties
- Easy to set into position with no need to cut edge shutter
- High load performance with fast installation
- Very low deflection at the connection to the structure
- Now an approved LABC Registered Detail

For more information and advice please contact J&P Building Systems Ltd.

www.jp-uk.com

24

DUBLIN APARTMENTS USE OFFSITE SYSTEM FEATURING MAGPLY PERFORMANCE

The full range of performance benefits to Magply boards have been utilised in the specification of an advanced offsite system being employed in the construction of a new apartment building standing alongside a famous central Dublin landmark on Amiens street.

Linham Construction is the main contractor and developer for the Five Lamps project, which is creating ten single bedroom apartments plus a two-bedroom, duplex property. The structure has been designed and specified by Building Surveying consultants, Merriman Solutions, to achieve an A1 Building Energy Rating under Part L of the Building Regulations. Edge structural engineers provided structural engineering for the LGS frame.

www.magply.co.uk

Faux Translucent Stone is an exotic collection of extremely elegant and highly attractive translucent material for interior use. More than just imitations of alabaster and onyx, these sheets offer versatility, lighter weight and more exquisite patterns than even the natural product. Each sheet is hand-made to an individual and unique beauty that makes them outstanding in any interior. Hotels, retail, offices, spa's, airports, hospitals, restaurants, yachts are but a few of the applications where this versatile material can be used. Whether as furniture, wall cladding or decorative installations, this trendy and innovative material is suitable for fabricating and installing into ultra-modern or classical interiors. Processing is incredibly easy using traditional techniques for wood or Perspex.



Important Features

- A beautiful diffuse translucency, with a natural look makes the material perfect when backlit
- Weighs significantly less than real natural stone
- Sheets can be warm-formed in a radius, from 600 mm (10 mm thickness)
- Easy to fabricate; bonding, milling, drilling and sanding
- Price-competitive when compared to real translucent stones
- Easy to clean and maintain
- Excellent chemical resistance
- Excellent colour stability for inside use
- Excellent fire behaviour: class Bs1d0 according to European norm 13501
- Large variety of stock available in the UK



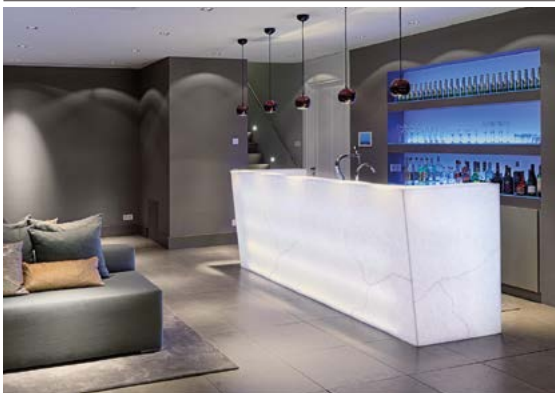
Abbey Distribution Ltd.

Faux Translucent Stone

Applications

Backlit Applications

Faux Translucent Stone is most eye catching when combined with light. Designs utilising backlighting show off the stone, literally, in its best light. Applications include Reception Desks, Bars, Lighting Fixtures and, when combined with LED's a wall and ceiling cladding to stunning effect.



Flavours, Liquors and Fragrances

Faux Translucent Stone has been tested by us for applications in direct contact with flavours, liquors and fragrances. We did not notice any difficulties removing stains, discolourisation or traces of chemical damage. This is another fantastic reason why Faux Translucent Stone is very popular for applications in retail and hospitality.



Wall Cladding

Faux Translucent Stone is beautiful when used as wall cladding. The material can be used for backlit applications, but is also just as elegant and effective without light. The material is also suitable for applications in wet surroundings such as bathrooms as the chemical resistance is very good and it can easily be cleaned and maintained.



Reception Desks and Bars

Faux Translucent Stone sheets weigh significantly less than real natural stone. That is why this material is very popular (e.g. with yacht interior designers). The material is often used for back-lit reception desks, bars and counters, in both the hospitality and retail industry. Due to the materials unique properties, we can bond, drill and even bend it!



GREEN BUILDINGS

Green Building, green construction, or sustainable building is not new; it's the practice of designing, constructing, and operating buildings to minimize resource use, reduce waste and avoid negative environmental impacts.

For 25 years - and more - we've been designing, manufacturing and constructing 'Green Buildings' and components in a 'Green way'. Creating buildings that deliver a positive impact on our climate and natural environment. It's in our DNA!

Low Energy Buildings are what we are about. By helping reduce your energy consumption we help you reduce your energy bills, increase your property value and, if you're a business, increases your profits and marketing potential. If you're a homeowner it gives you more free cash to spend on the other things you'd like in life.

Lifestyle Living is, therefore, one more box our buildings can tick for you. It's also one of our aims when working with you and your professional advisors. Understanding the way you live and operate, sharing your aspirations for 'something better' is part of what drives us.

Going Green is not a fad or a fashion. It is a way of life and an important reason for adopting an eco-friendly lifestyle,

making conscious decisions about sustainability, reducing harm to our world and creating positive conditions for the environment to flourish and thrive. Green buildings conserve precious natural resources and improve our quality of life.

Top Tips for Building Green

Decide on your energy systems and on-site generation

- Solar | Wind | Geothermal

Specify your Thermal Insulation in relation to your:

- Site location, building orientation and surroundings
- Heating / cooling / climate systems
- Preference for natural, recycled or other sustainable materials

Assess the health and comfort factors

Choose materials, like wood, that:

- Are good natural insulators
- Are easily and economically recycled
- Have good 'end of life' value

Consider prefabrication of components and building elements:

- That minimise waste both off-site and on-site
- For managing the site to improve the environment
- With 'lean manufacture' to reduce energy use

REFURB, REMODEL, RENEW

Car Barns



Bungalow into 3 Storey House



Balconies



Oak Porches and Entrances



Some of our other services. Visit our website to find out more


Grand Garages

Grand Garages provide extra height for larger vehicles and can be combined with workshops, studios, games rooms, home offices etc.. Unlike most other Garage type buildings, Grand Garages have been developed using virtually the same building technology used in the construction of residential buildings. They can deliver everything from simple single car garages right up to hobby, sports, leisure and home based office "Lifestyle Pavillions".

Grand Garages are designed to be extendable. The precision manufactured frames enable you to start with the smallest models and then, as and when the need arises, add to the structure, either at the end, the side, or by replacing the roof.


Parkland Homes

Re-Locateable Sectional Buildings

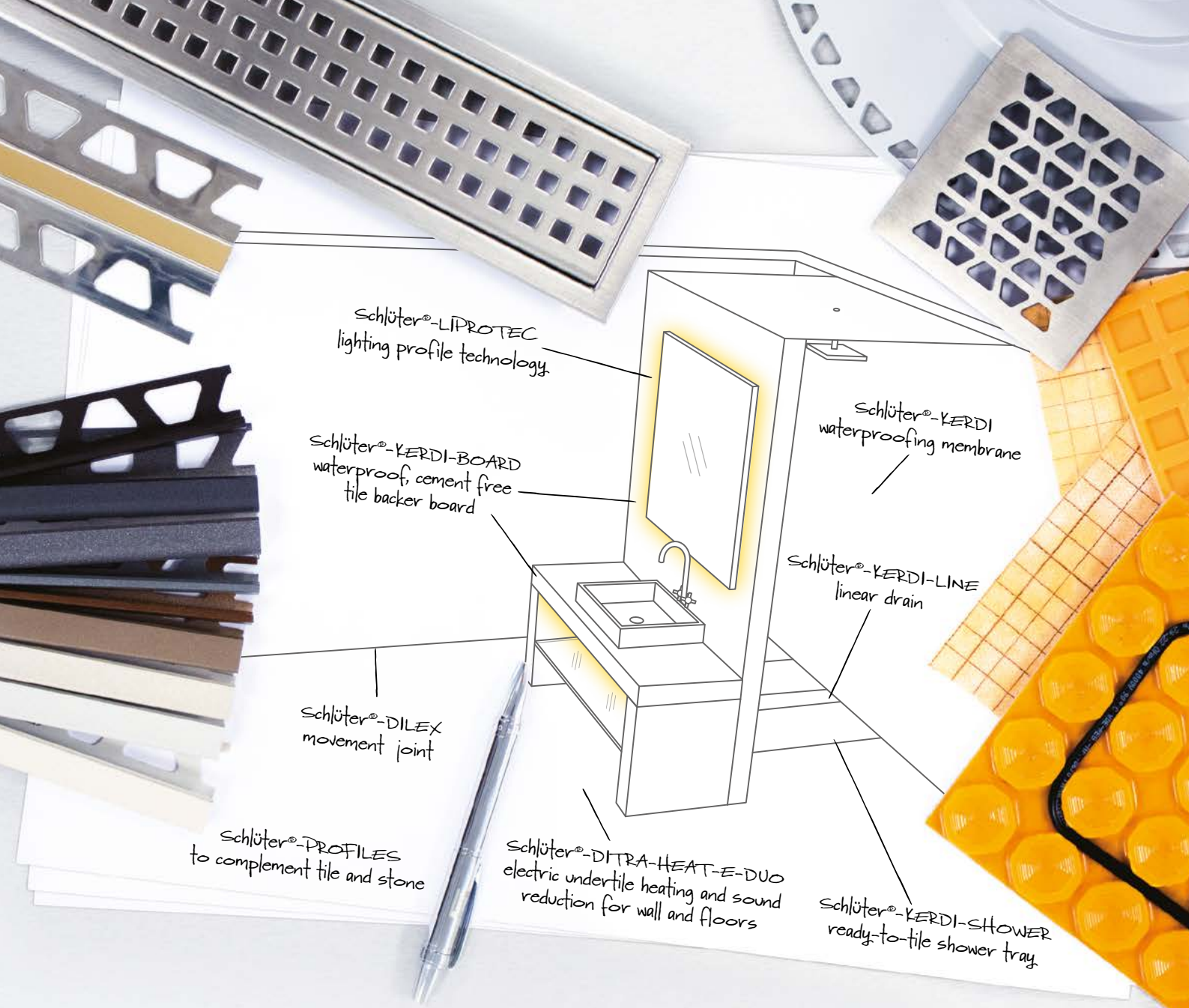
- Unique solutions for low cost, affordable housing delivered quickly
- Emergency, temporary & permanent accomodation problems solved
- Comfortable Homes for retirees, keyworkers, young and homeless people
- Mobile & Relocatable for transitional and longer term residential needs
- Spacious Luxury Park Homes and small, basic, budget bungalows

Your project will be in safe hands

With over 80 years experience providing High Quality buildings & property developments you can rest in the knowledge that you and your project will be taken well care of.

Get Started On Your Project **01291 437050**





PROBLEM | SOLVED

Schlüter®-WETROOMS

When specifying a wetroom, you need a system you can trust.



Our **Schlüter®-WETROOM** systems guarantee CE marked waterproofing that is suitable for use in commercial and residential installations with tile and stone coverings.

The complete system offers all the required products for waterproofing and drainage to create showers and wetrooms.

Backed up by expert technical support, whenever, wherever you need it.

Making the decision to choose Schlüter-Systems even easier.

To find out more call **01530 813396** or visit www.schluterspecifier.co.uk

