



RWinvest

ADELPHI WHARF PHASE 2

CONSTRUCTION UPDATE

July 2019



ADELPHI WHARF PHASE 2

CONSTRUCTION UPDATE

July 2019

After some previous delays at Adelphi Wharf which were encountered during the remedial ground works, the project is now progressing very well.

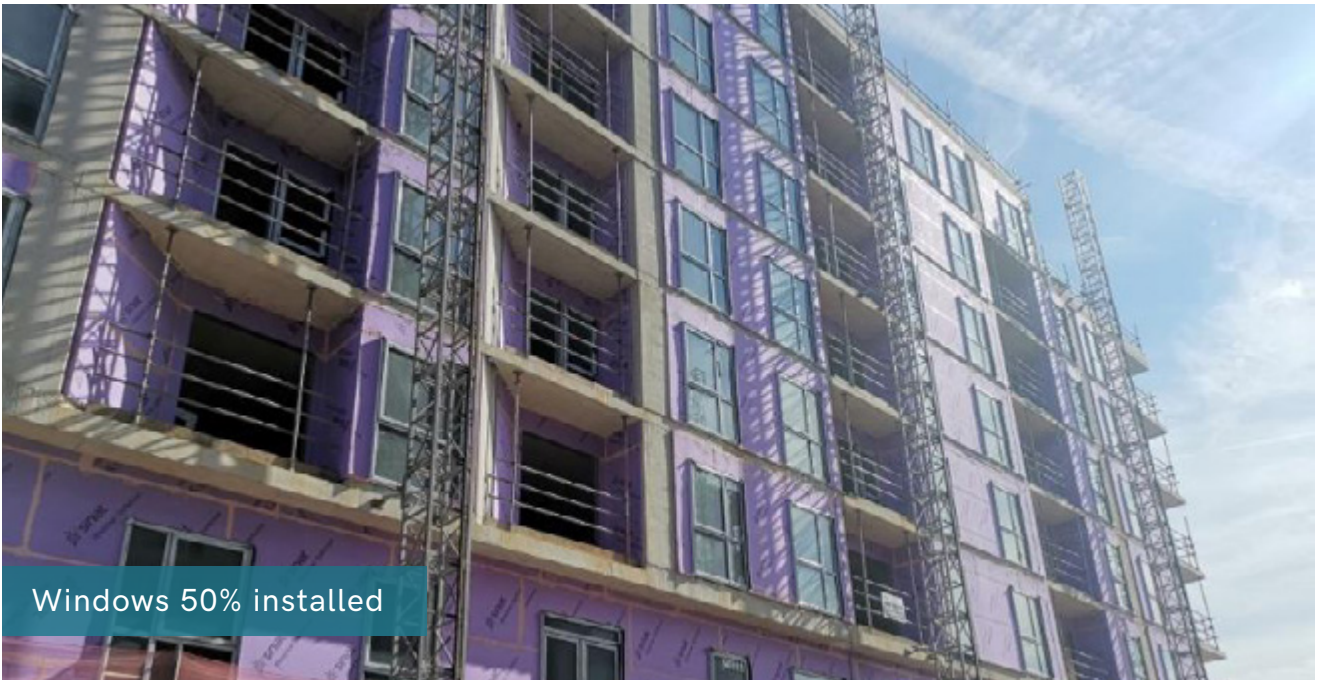
Works on the envelope and fit out commenced in January 2019. Between February and May, focus of works has been on the roofing and drainage to secure weather tightness as soon as possible. Co-ordination of key envelope and internal trades have commenced including roofing, windows, internal partitions, mechanical and electrical works and cladding.

The concrete frame, internal drainage, mast climbers and steel framing system have been completed.

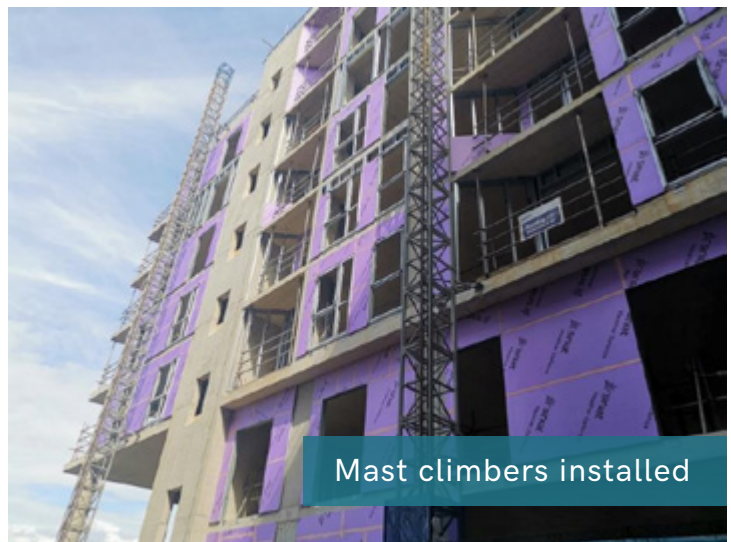




Internal Drainage



Windows 50% installed



Mast climbers installed



Steel framing system in place



Concrete frame complete





RWinvest

Liverpool +44 (0)151 808 1250

London +44 (0)207 100 4141