



ELEMENT - The Quarter Construction Update

December 2022

December 2022

Lift installation has now commenced at ELEMENT - The Quarter, with other internal works racing ahead.

1st and 2nd fix electrical, plumbing and heating works are all making great progress. Carpet and floor finishes are making excellent headway, as well as plaster finishes to walls and ceiling, doorframes, skirting and architrave.

Summary of Works Progressed

- Retaining walls and concrete beam foundations are now 85% complete
- Underground drainage is 99% progressed
- Scaffolding and mast climber access has achieved 99% progression so far
- Development to the flat roof covering including balconies is 89% complete
- Weatherboarding is 87% complete
- External windows, doors and curtain walling are 80% progressed
- External wall insulation and render is 75% progressed
- The Mansafe system is 60% complete
- The lift has been installed to 40%
- Partition wall installation is 69% complete
- Apartment ceiling installation is 50% complete
- Plaster finishes to walls and ceilings are now 55% progressed
- 1st fix electrical is 86% progressed with plumbing and heating at 82% complete
- 2nd fix electrical is 19% complete, with plumbing and heating 10% progressed
- Kitchen units and appliances have been 36% installed so far
- Doorframes are 40% progressed
- Skirting and architrave are now 38% complete
- Bathroom sanitary fittings are 45% complete
- Wall and floor tiling are 24% progressed
- Carpet and floor finishes have made great progress
- Doors and ironmongery are 32% progressed thus far
- Decorations have been making progress and are 30% complete



Secure site entrance



Brunswick Road - Site view



Student wing - Cladding installation ongoing



'Zig-zag' Elevation - Render and render coat decoration



Residential Wing - Render coat decorated to inner courtyard elevation



Student Wing - External insulation and cladding ongoing



Student Wing – External insulation and cladding ongoing



Residential Block – Under ground drainage works ongoing



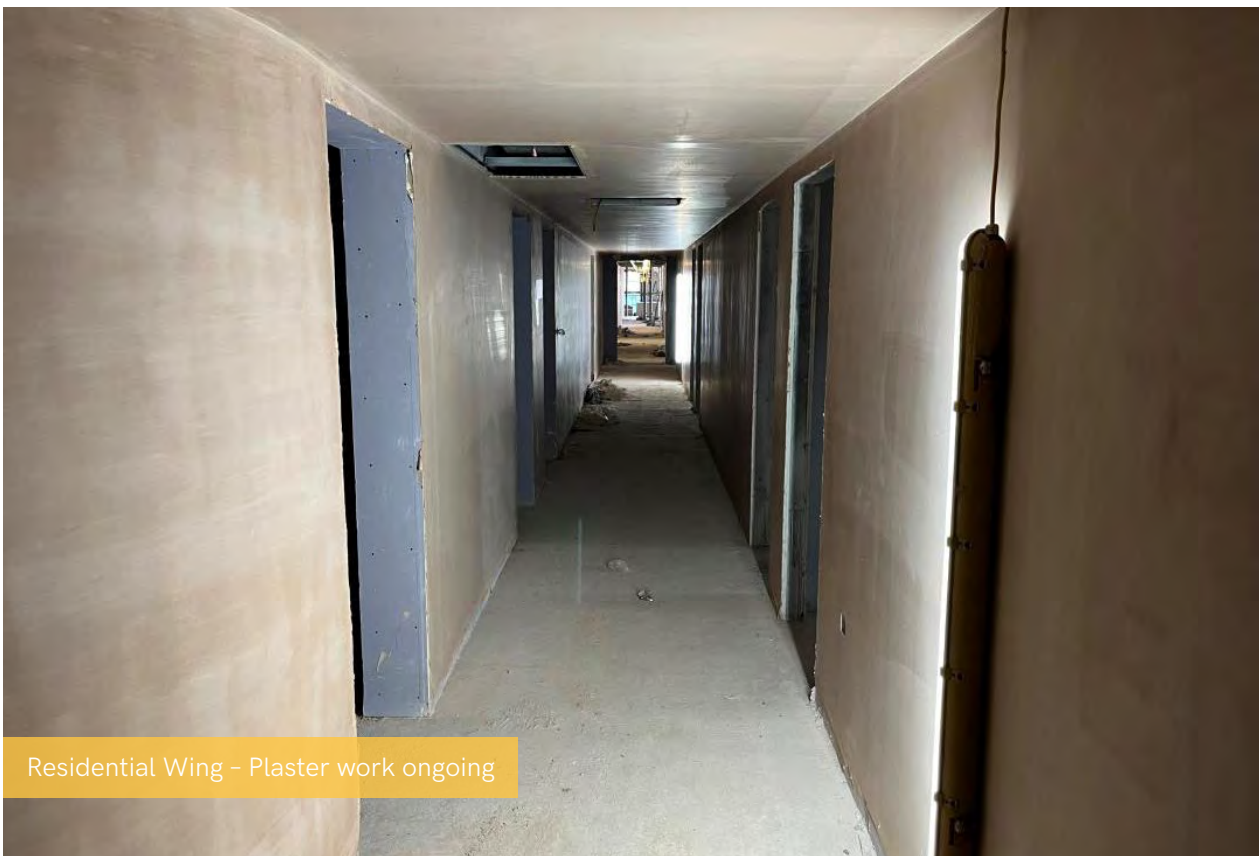
Commercial Block – Ground floor slab rebar installation



Commercial Block – Rebar installation and concrete slab pour



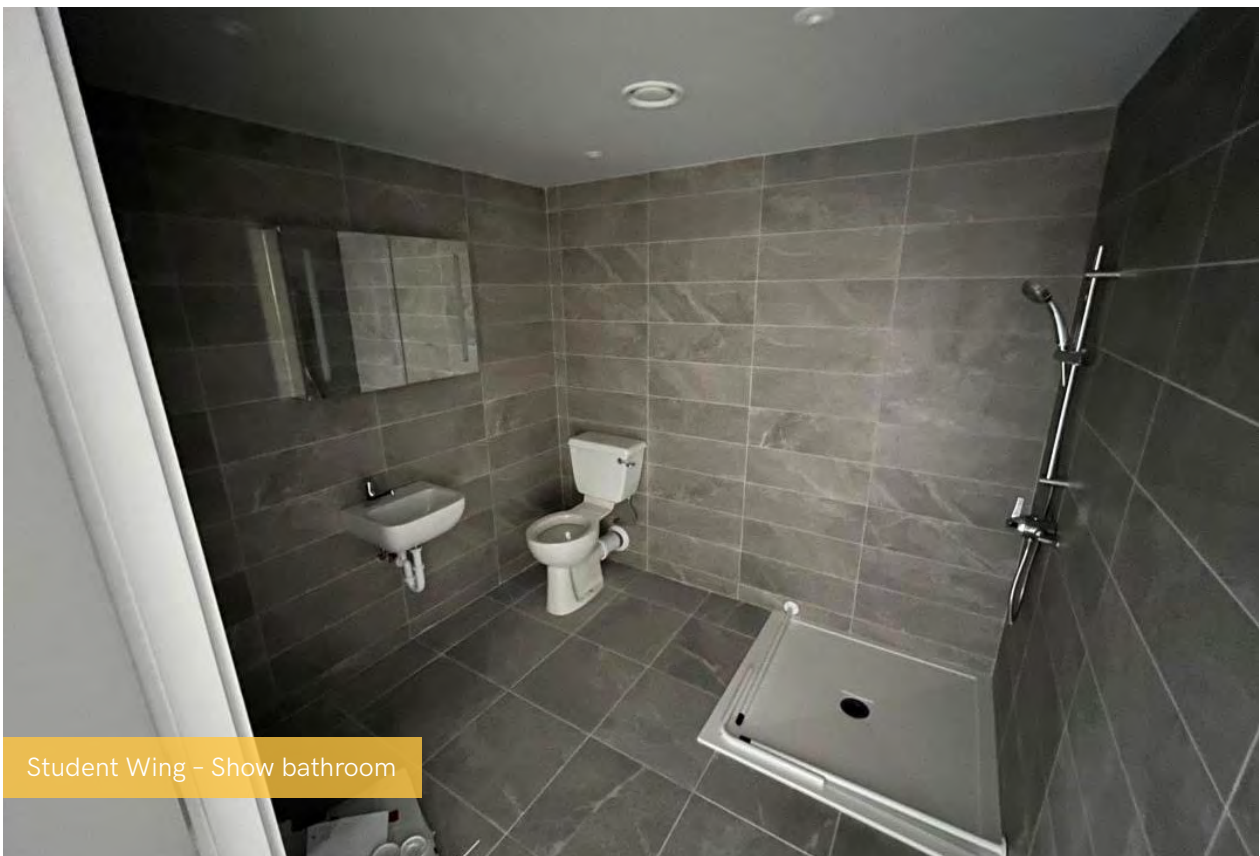
Residential Wing - Erection and boarding of partition walls



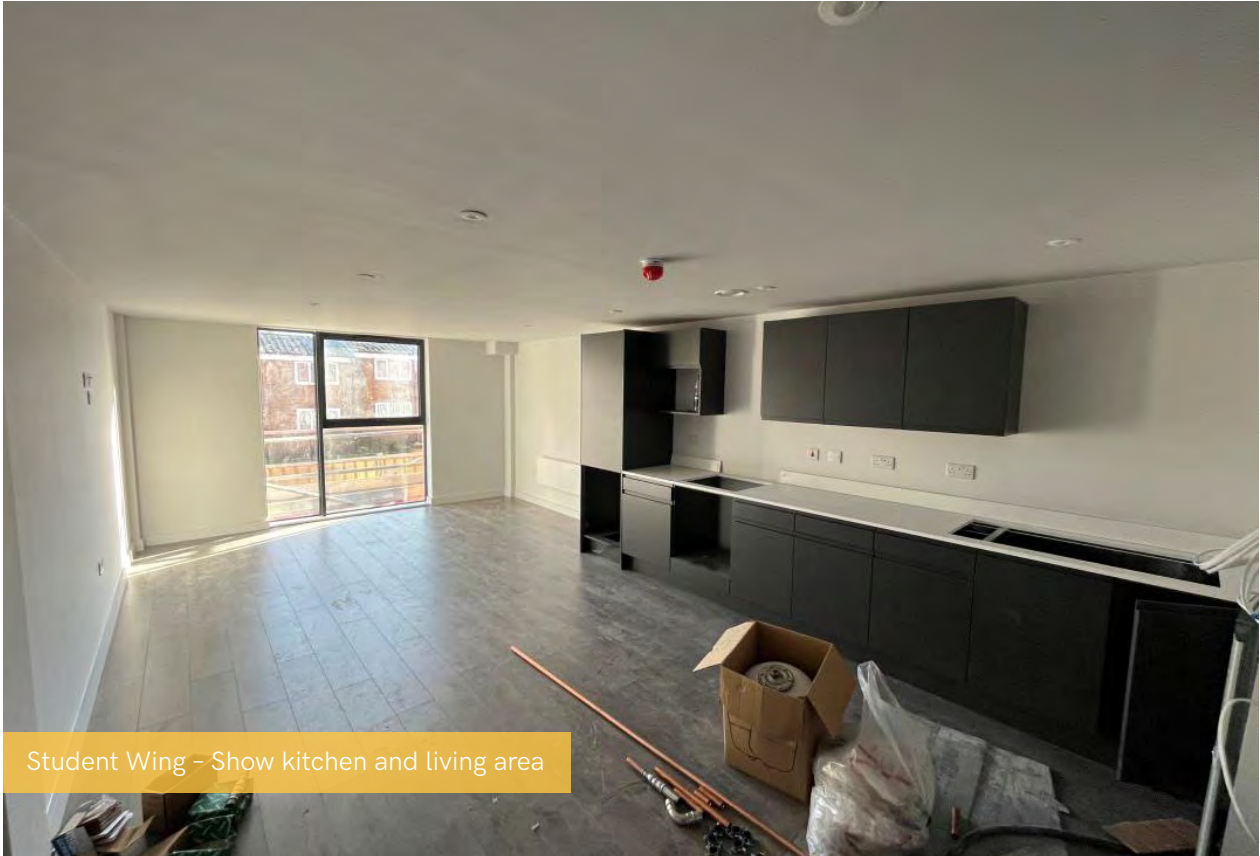
Residential Wing - Plaster work ongoing



Residential Wing - Internal finishes ongoing



Student Wing - Show bathroom



Student Wing - Show kitchen and living area



Aerial site view



Aerial site view



Aerial site view