



RWinvest

ADELPHI WHARF

Construction Update
November 2017

Adelphi Wharf Adelphi St, Salford, M3 6EN

What's New?

Notable progress on-site this month can be seen within all kitchens up to level 5, which are now fitted. In addition, joinery is progressing well across all floors up to level 5.

Decorating is progressing steadily up to the second floor and sanitary installations are being fitted on the 3rd floor along with second-fix joinery. The window frame is 90% installed with external insulation and brickwork also underway.

On all floors up to level 3, tiling is progressing and on the building's top floor, partition works are being completed, ready for plastering.

Furthermore, envelope final stages are being completed and the roofing is also fully installed.

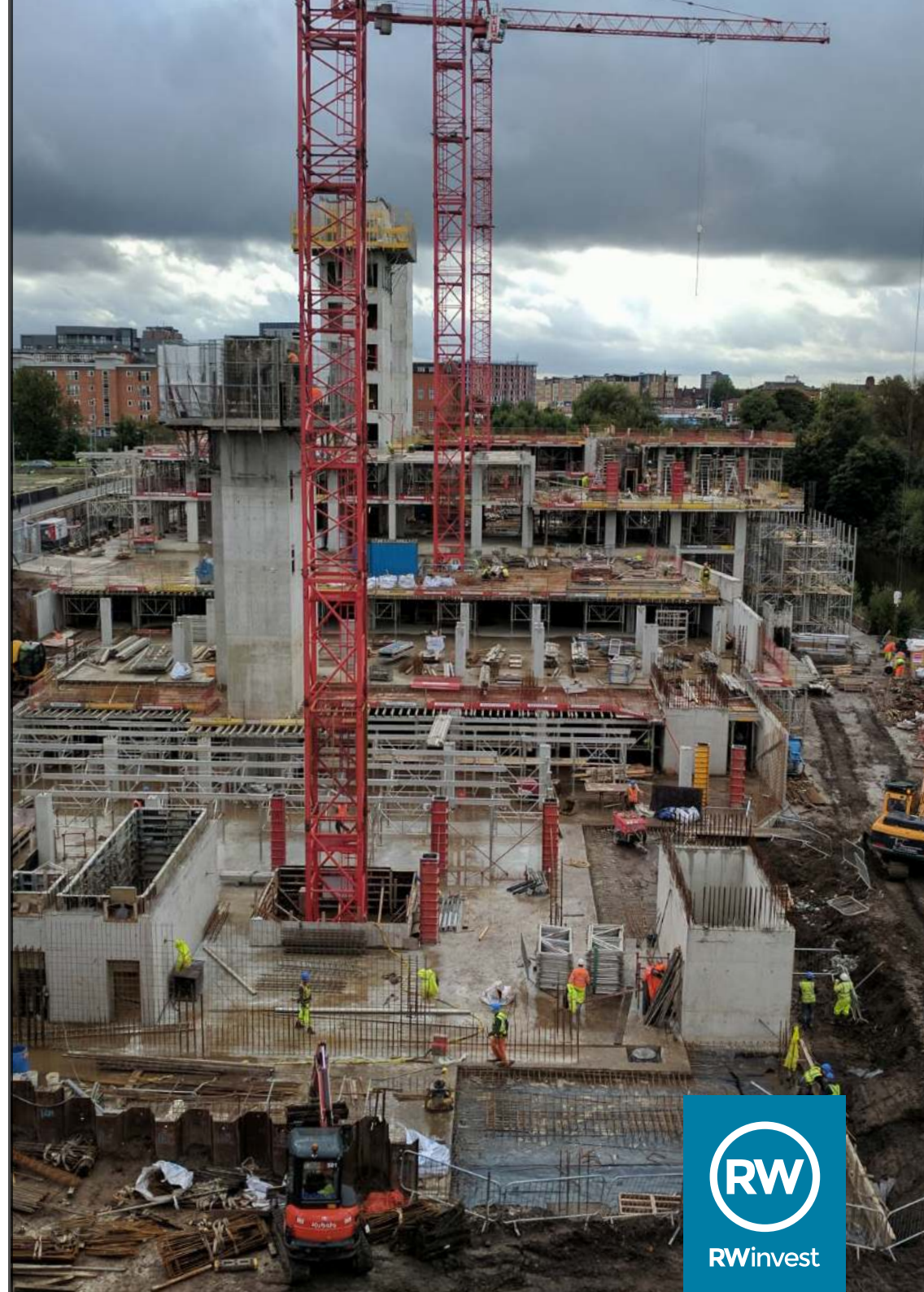
The Schedule

As it stands, Block C is set for completion in January 2018, Block B should be completed in February 2018 and Block A is set for completion in March 2018.

If you need any further information in the meantime, please call us at the following offices:

Liverpool +44 (0)151 958 1254

London +44 (0)207 100 4141





RWinvest

