



RWinvest

# FABRIC DISTRICT RESIDENCE

## CONSTRUCTION UPDATE

August 2019



---

# FABRIC DISTRICT RESIDENCE

## CONSTRUCTION UPDATE

August 2019

### Works Progressed

In the latest construction update for Fabric District Residence, joisting is now complete to all levels including the upper roof level. Boarding has also been completed to the roof area.

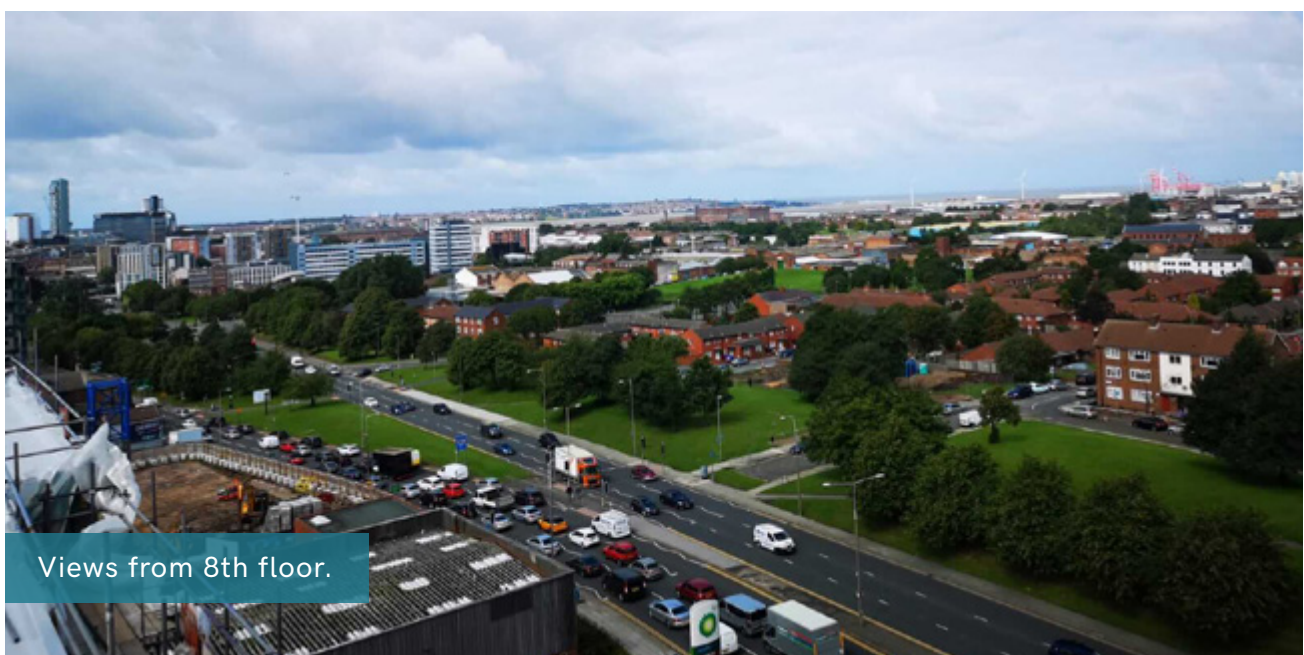
The lift shaft and stair core works are progressing to the 6th and 7th floors, and external weatherboard is completed on both main elevations.

Other tasks progressed during the period include internal drainage which is going well. Several roof outlets are now connected to the drainage system and this will continue until completion.

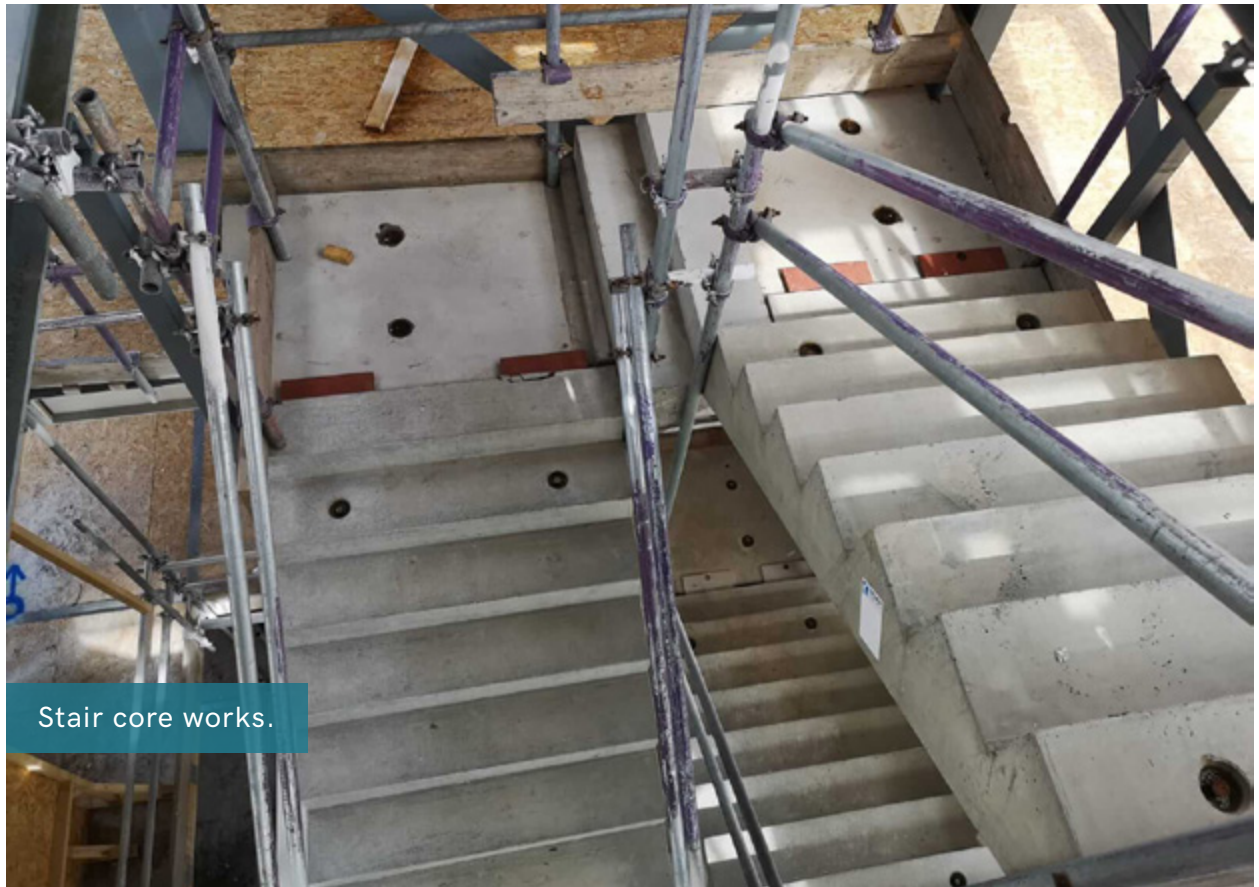
Internally, beam encasements are complete on both the 1st and 2nd floors. Resilient bar and insulation have been installed in these areas with the initial fire boarding put in place on the first two floors of the second phase.

### Works Anticipated

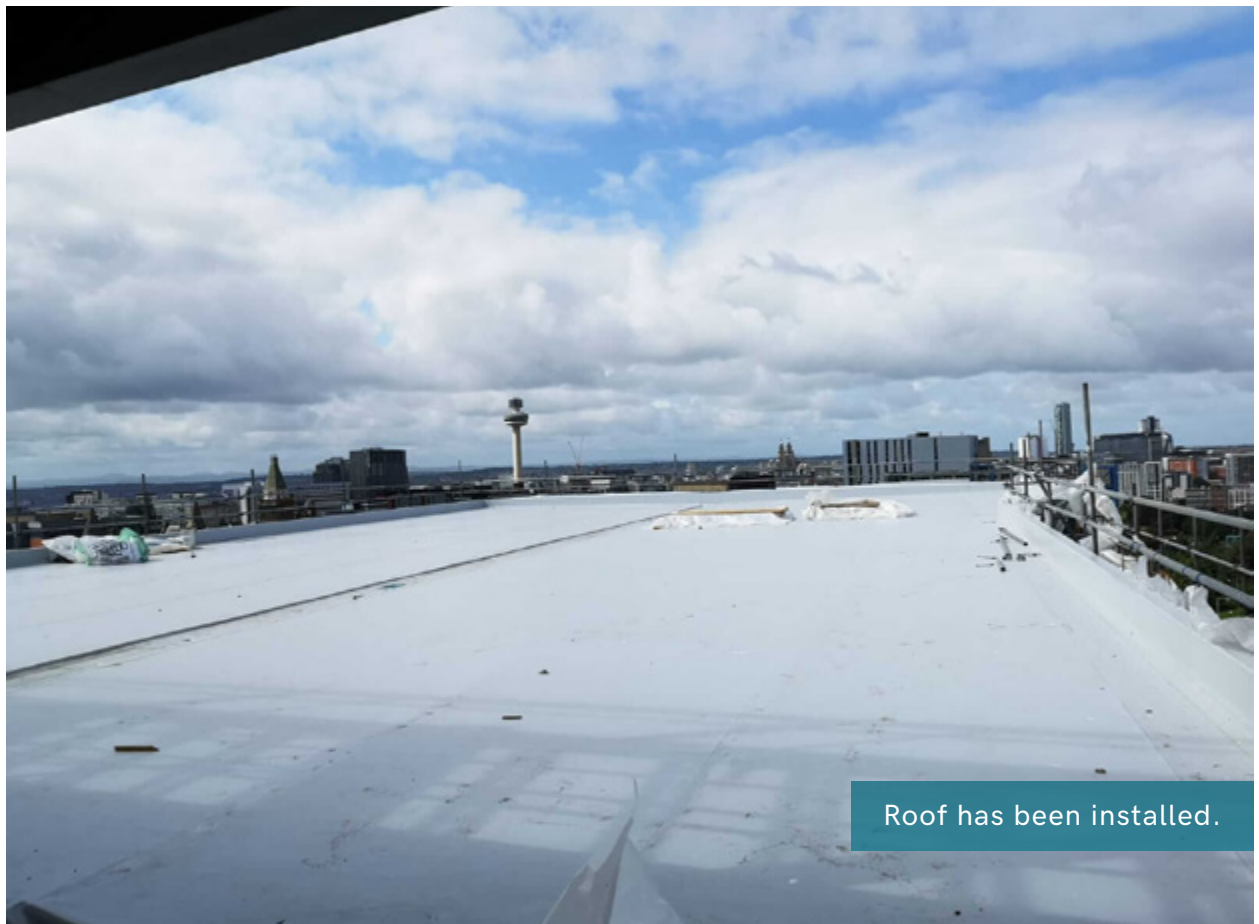
Partition works will commence shortly as well as first fix mechanical and electrical works.







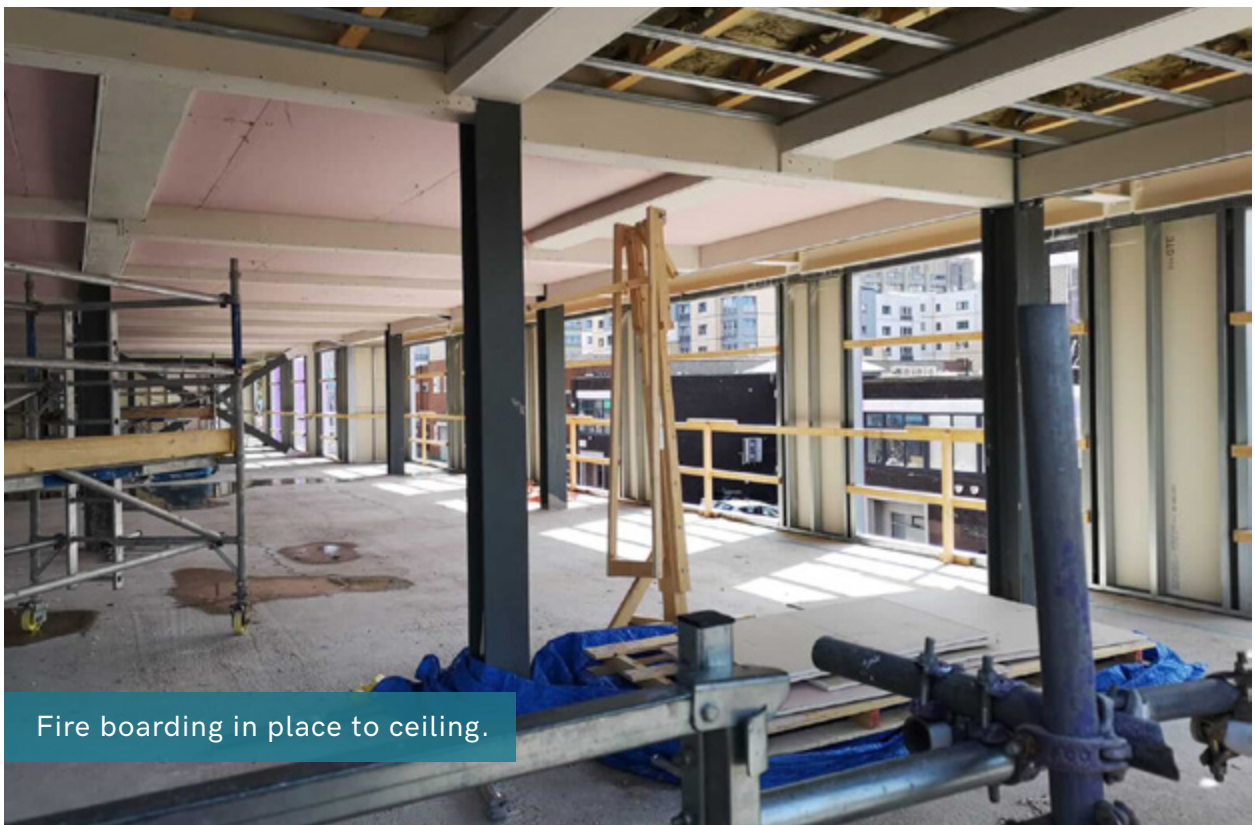
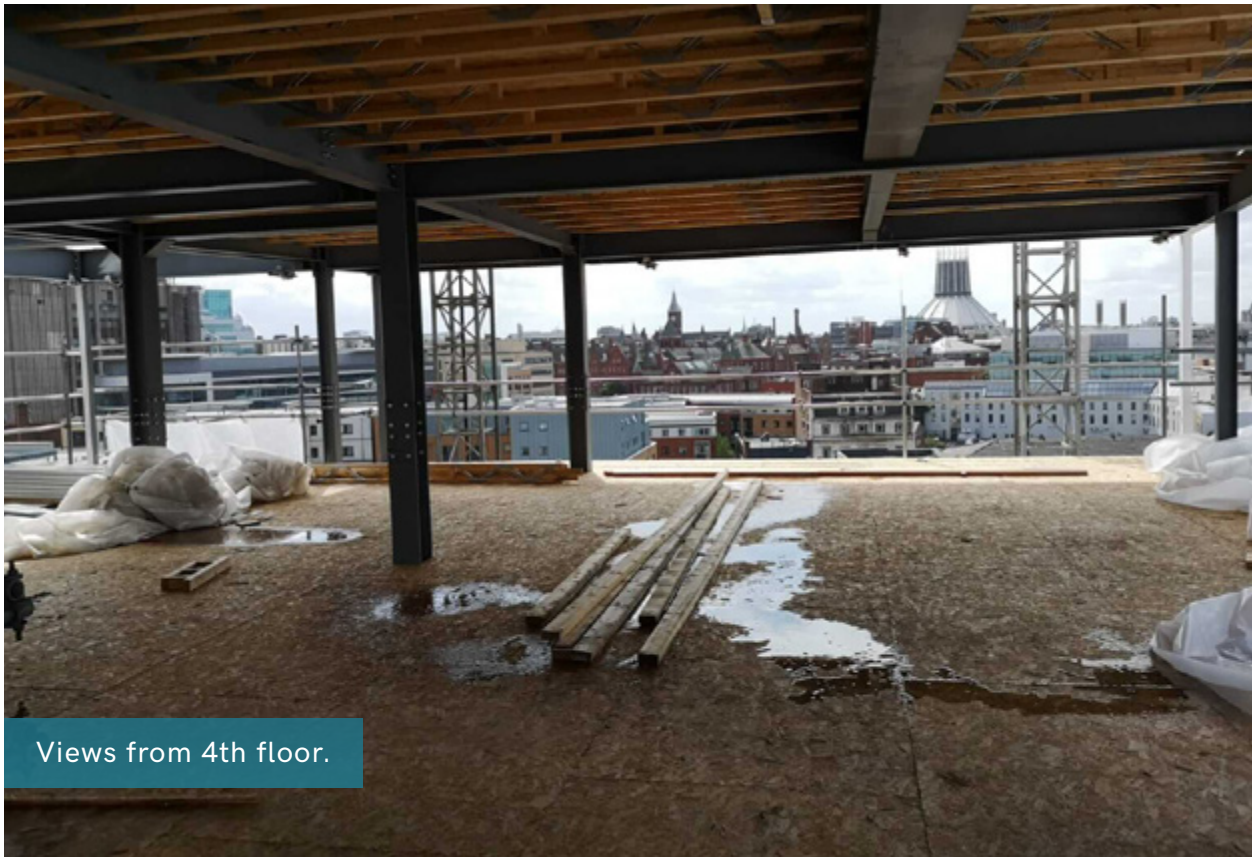
Stair core works.



Roof has been installed.



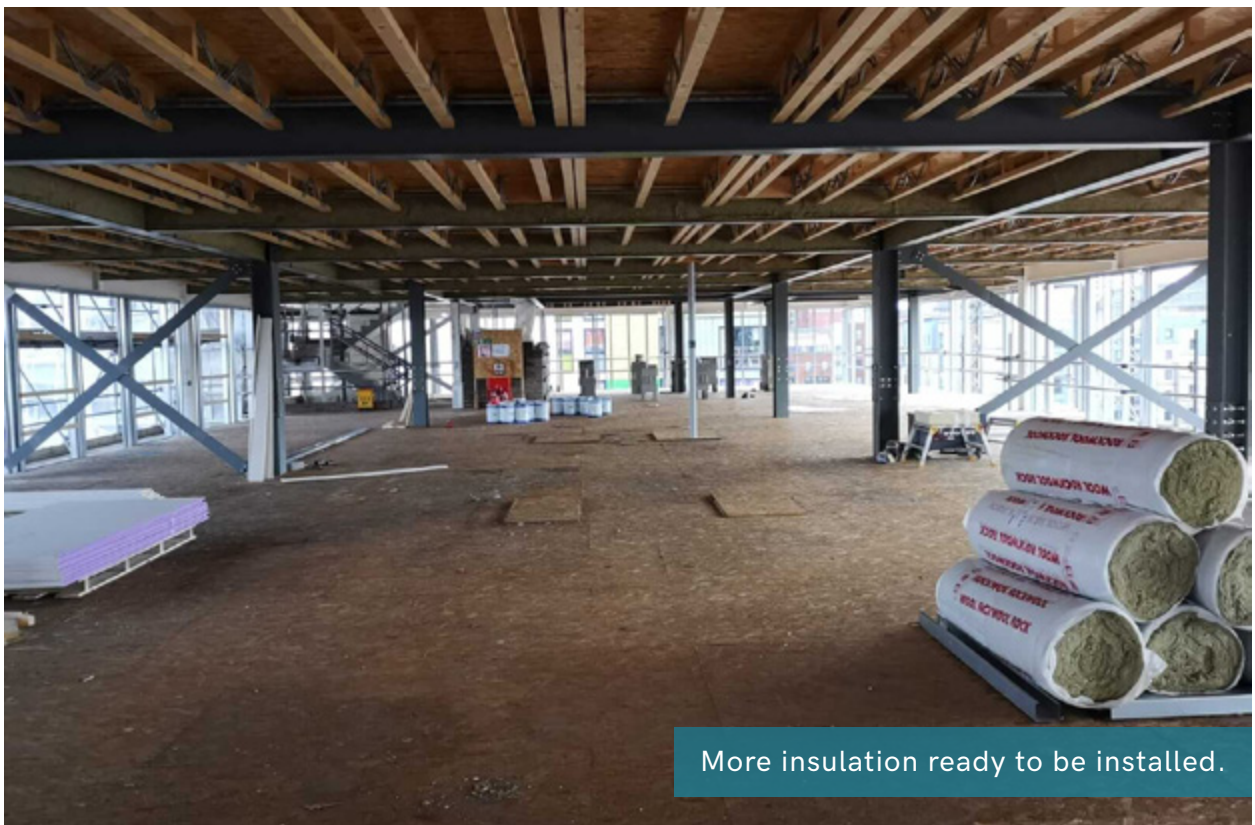








Beam encasements completed on 1st and 2nd floors.



More insulation ready to be installed.



**RWinvest**

Liverpool +44 (0)151 808 1250

London +44 (0)207 100 4141