



RWinvest

L1 STUDIOS

L1 STUDIOS

Construction Update
July 2018

L1 Studios

16 Fleet Street, Liverpool, L1 4AN

The L1 Studios construction update shows excellent progress on site with many tasks complete including the lift shaft and window frames up to the sixth floor. Many activities will continue to progress until complete across all floors of the development alongside the commencement of cladding installation.

Whats New?

- External façade masonry is complete to level 2
- CP board is complete to level 7
- Window frames are complete to level 6
- Glazing installation has commenced
- Plasterboard partitions have commenced on floors 3 to 6
- Construction of the lift shaft is complete
- Construction of riser is complete
- Roof is at 75% completion
- Mechanical and electric first fix works are 75% complete

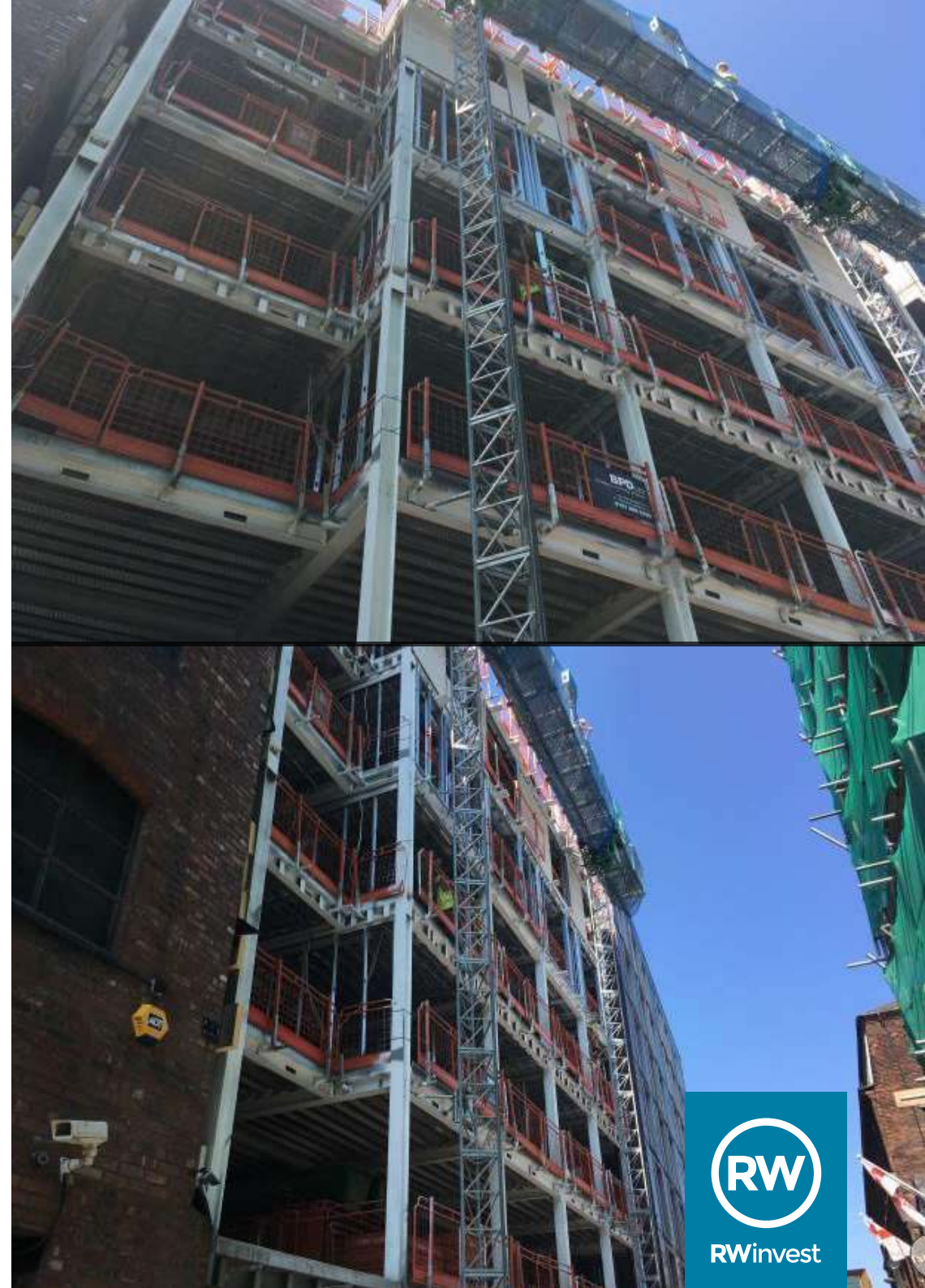
Whats Scheduled

- Commencement of cladding installation
- Progression of window installation
- Progression of façade masonry
- Progression of glazing installation
- Completion of mechanical and electrical first fix works on upper floors
- Completion of partitioning works on upper floors

If you need any further information in the meantime, please call us at the following offices:

Liverpool +44 (0)151 808 1250

London +44 (0)207 100 4141





RWinvest