



ELEMENT - The Quarter Construction Update

January 2023



January 2023

Underground drainage approaches completion at ELEMENT – The Quarter, as well as weatherboarding, the flat roof covering, scaffolding and other sub-structure and superstructure works.

Internally, huge progress has been made to 2nd fix electrical works, apartment ceilings and doors and ironmongery. General fixtures and fittings have also commenced during the period.

Summary of Works Progressed - Sub-Structure and Super Structure

- Retaining walls and concrete beam foundations are now 89% complete
- Underground drainage is 99% progressed
- Ground floor slab construction is 46% complete
- Scaffolding and mast climber access has achieved 99% progression so far
- Structural framework forming the external walls is 96% complete
- Development to the flat roof covering including balconies is 98% complete
- Weatherboarding is 96% complete
- External windows, doors and curtain walling have made significant progress and are 95% complete
- External wall insulation and render is now 98% progressed
- The Mansafe system is also 98% complete

Summary of Works Progressed - Internal Fit Out

- The lift has been installed to 50%
- Partition wall installation is now 80% complete
- Apartment ceiling installation is 65% complete
- 1st fix plumbing and heating is 84% complete
- 2nd fix electrical is 49% complete, with plumbing and heating 28% progressed
- Kitchen units and appliances have been 37% installed so far
- Doorframes are 48% progressed
- Skirting and architrave are now 47% complete
- Wall and floor tiling are 33% progressed
- Carpet and floor finishes are nearly half way there
- Doors and ironmongery are 47% progressed thus far
- Decorations have been making progress and are 40% complete
- General fixtures and fittings have commenced



Walker Street - Site view



West Derby Road - Site view

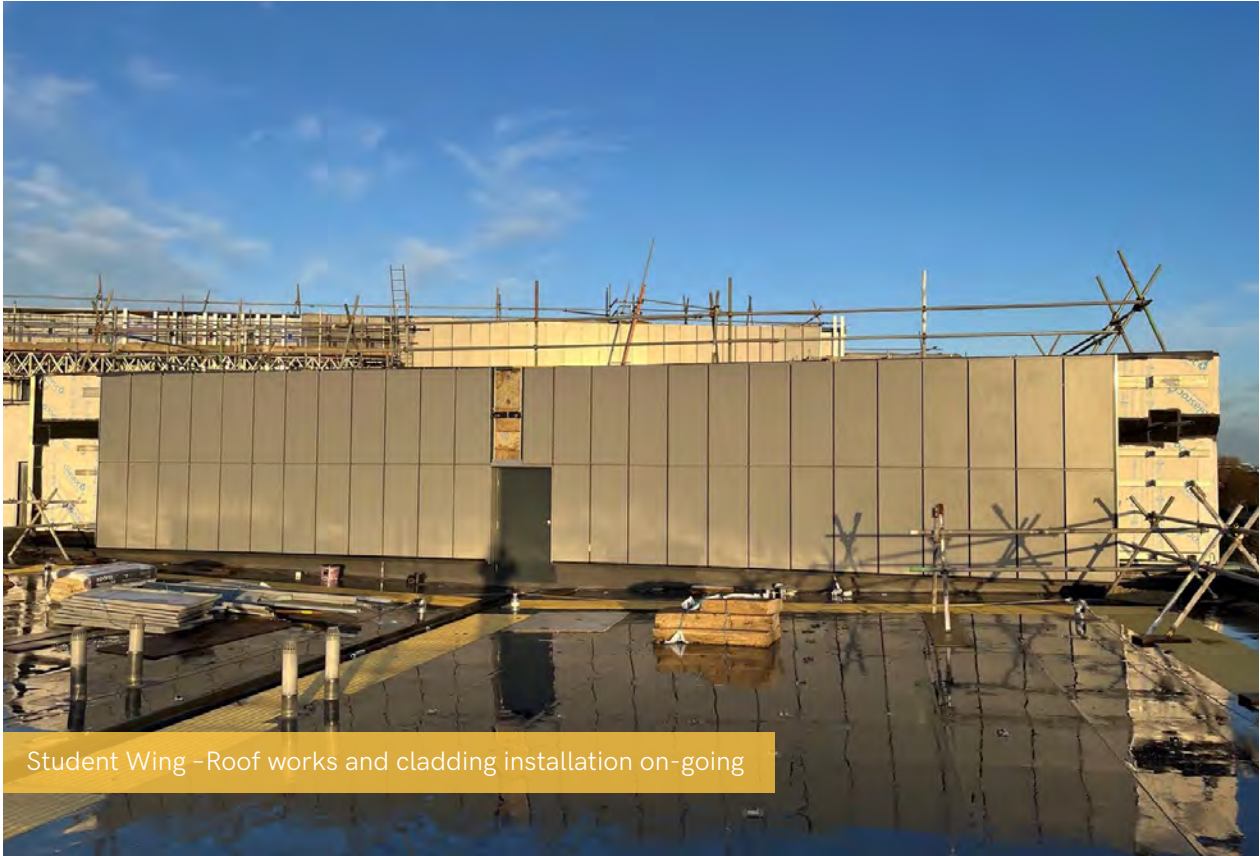


Brunswick Road -Site view



Residential Block - Render decoration complete





Student Wing - Roof works and cladding installation on-going



Commercial Block - Weatherboarding installation on-going



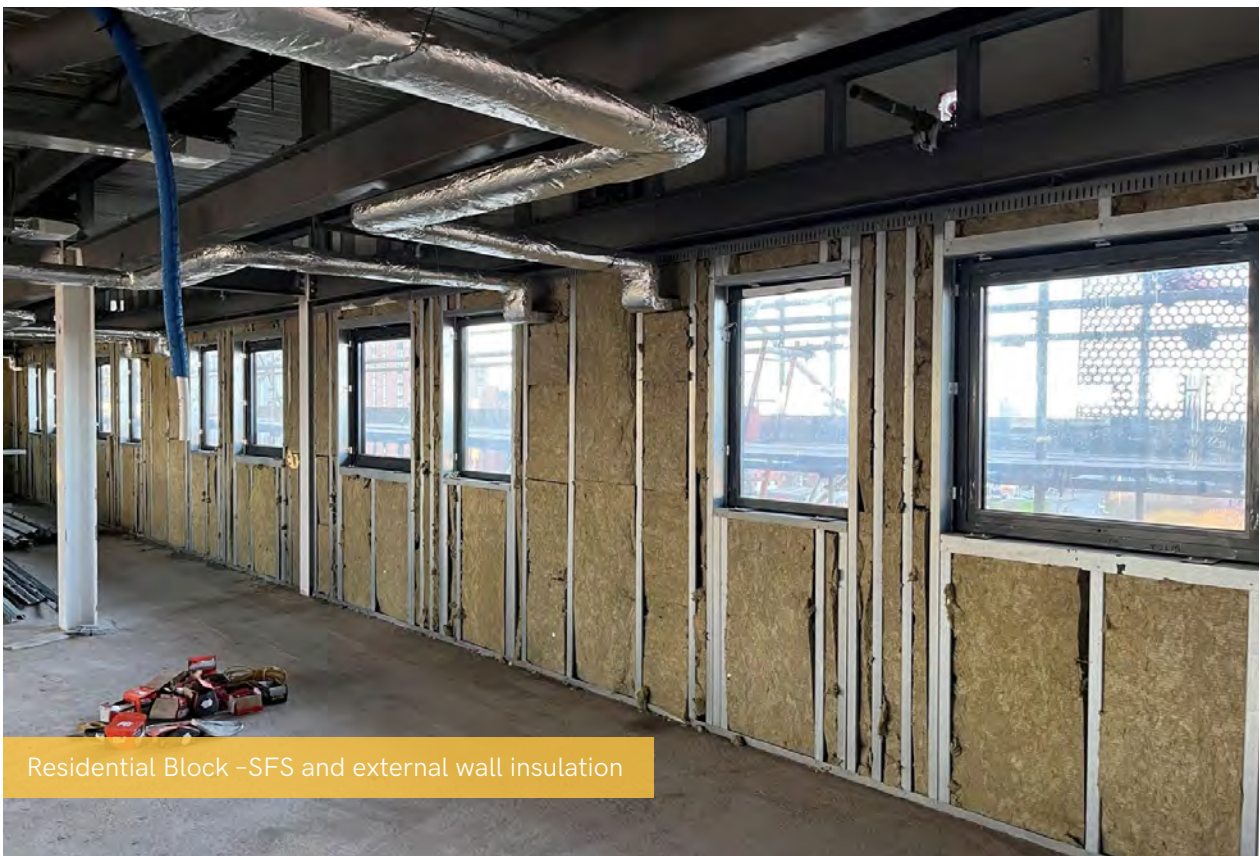
Residential Wing - Ground floor slab pour



Residential Block - Ground floor slab pour



Commercial Block - Internal blockwork ongoing



Residential Block - SFS and external wall insulation



Residential Block -Lift installation



Student Wing - Bathroom appliance installation

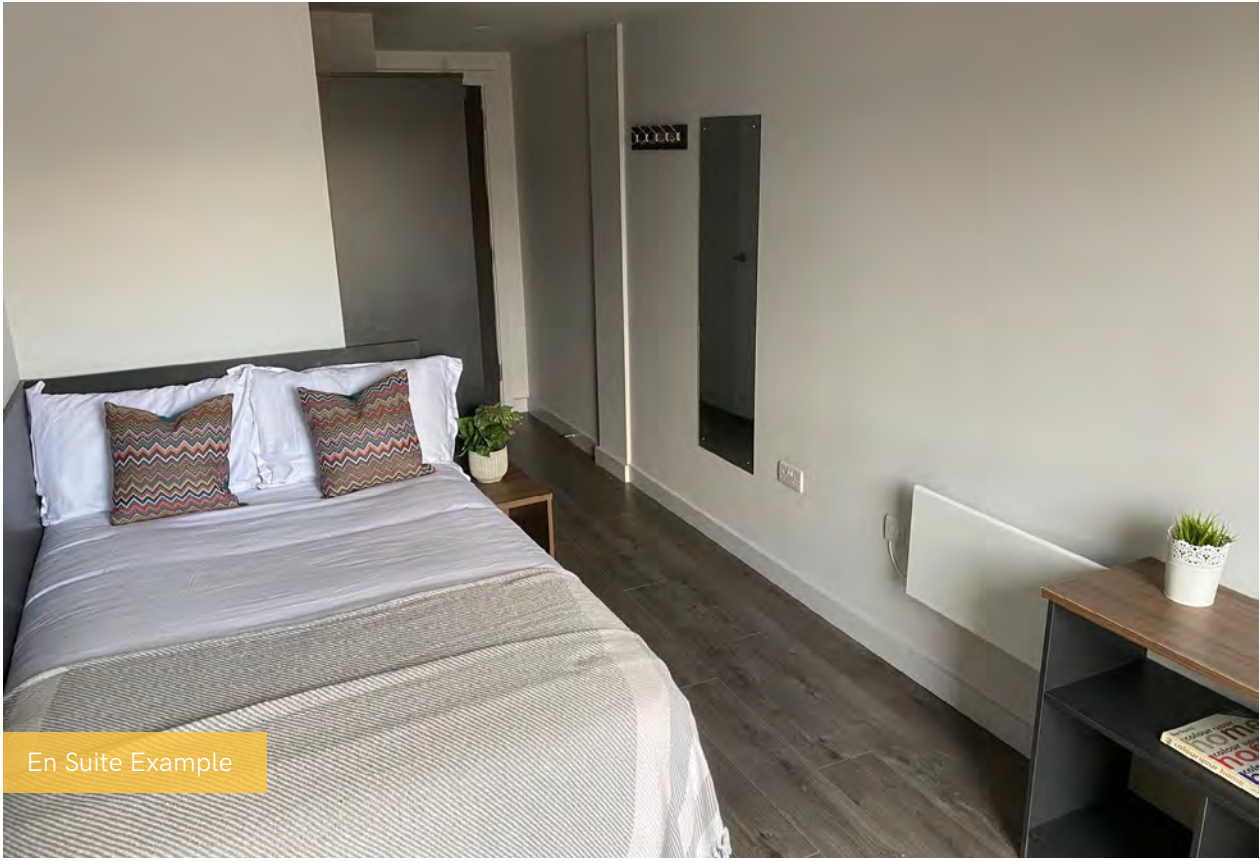


Student Wing -Internal finishes on-going

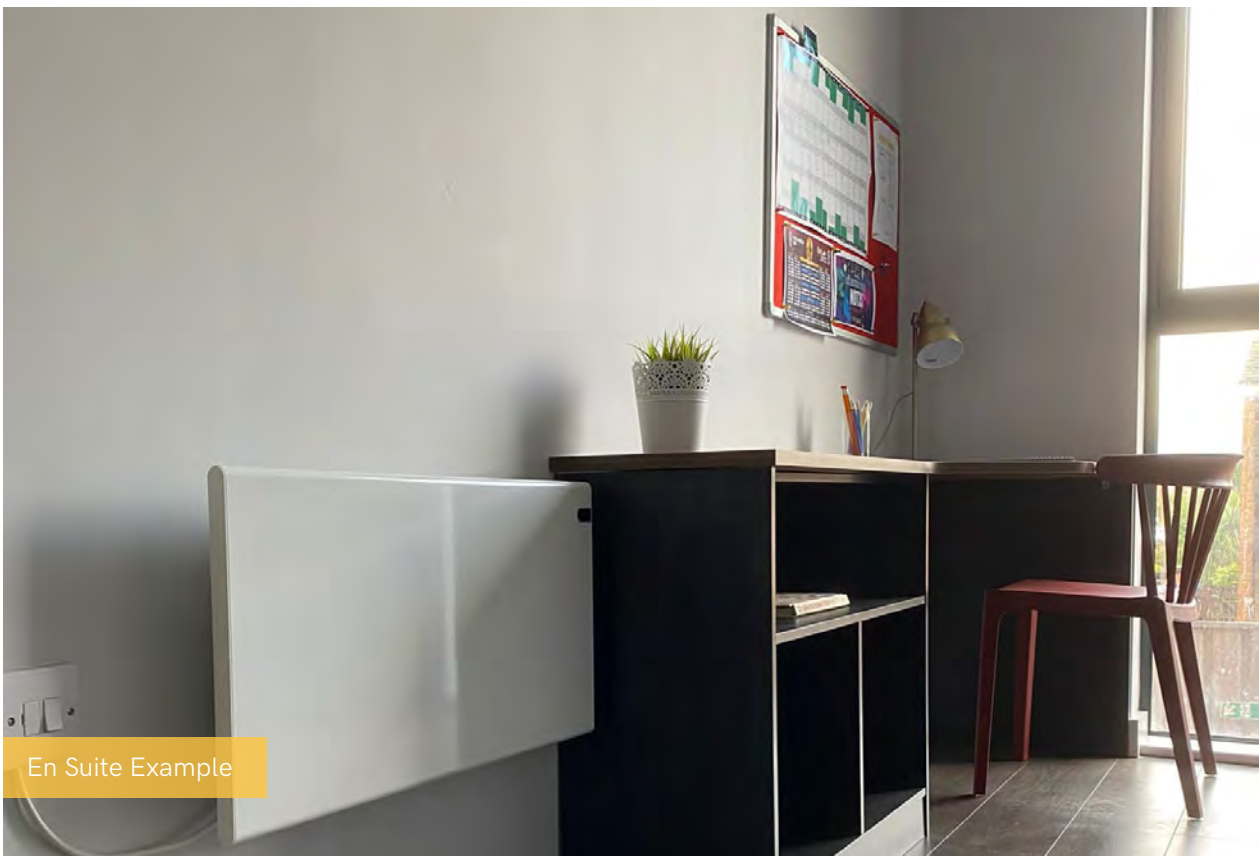


Student Wing -Kitchen installation on-going

En Suite - Show Apartment



En Suite Example



En Suite Example

En Suite - Show Apartment



En Suite Example



En Suite Example



En Suite Example

En Suite - Show Apartment

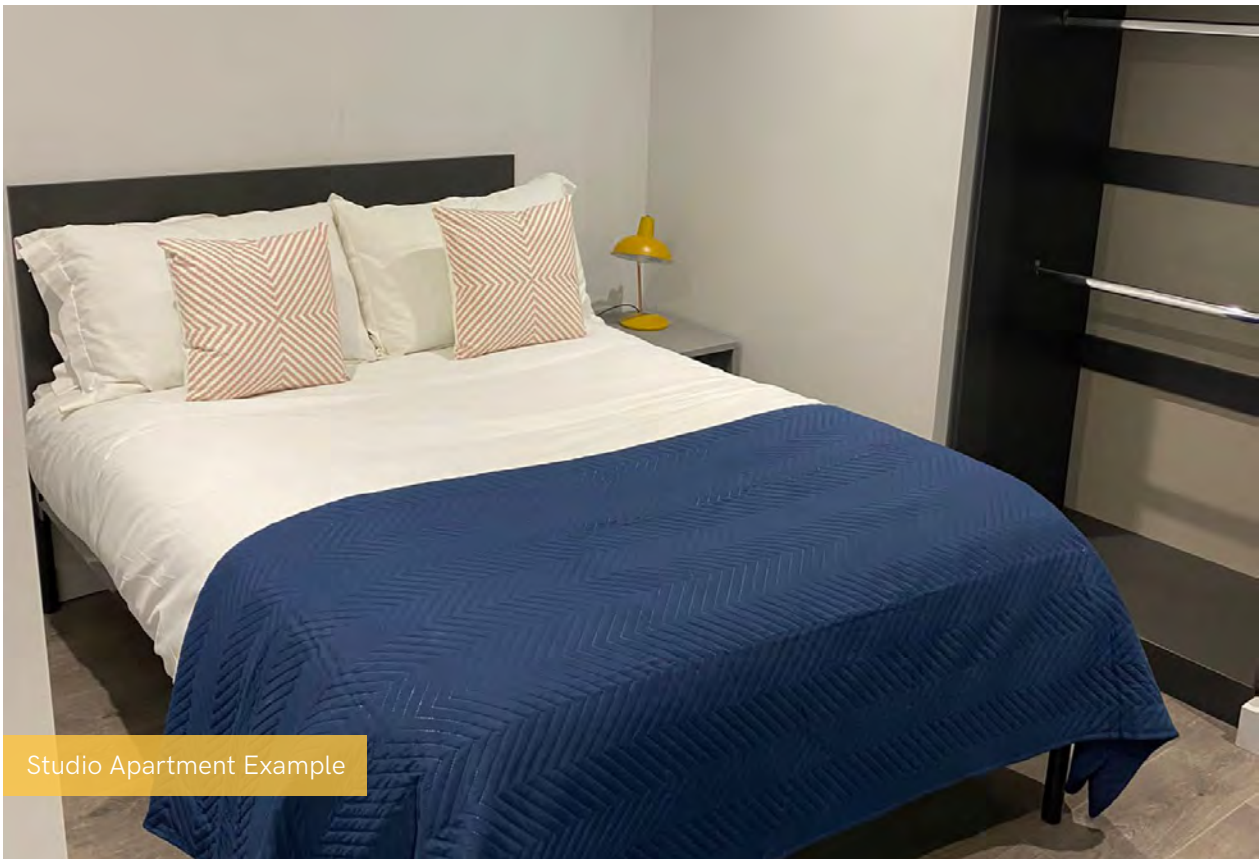


Communal Kitchen Example



Communal Kitchen Example

Studio - Show Apartment



Studio Apartment Example

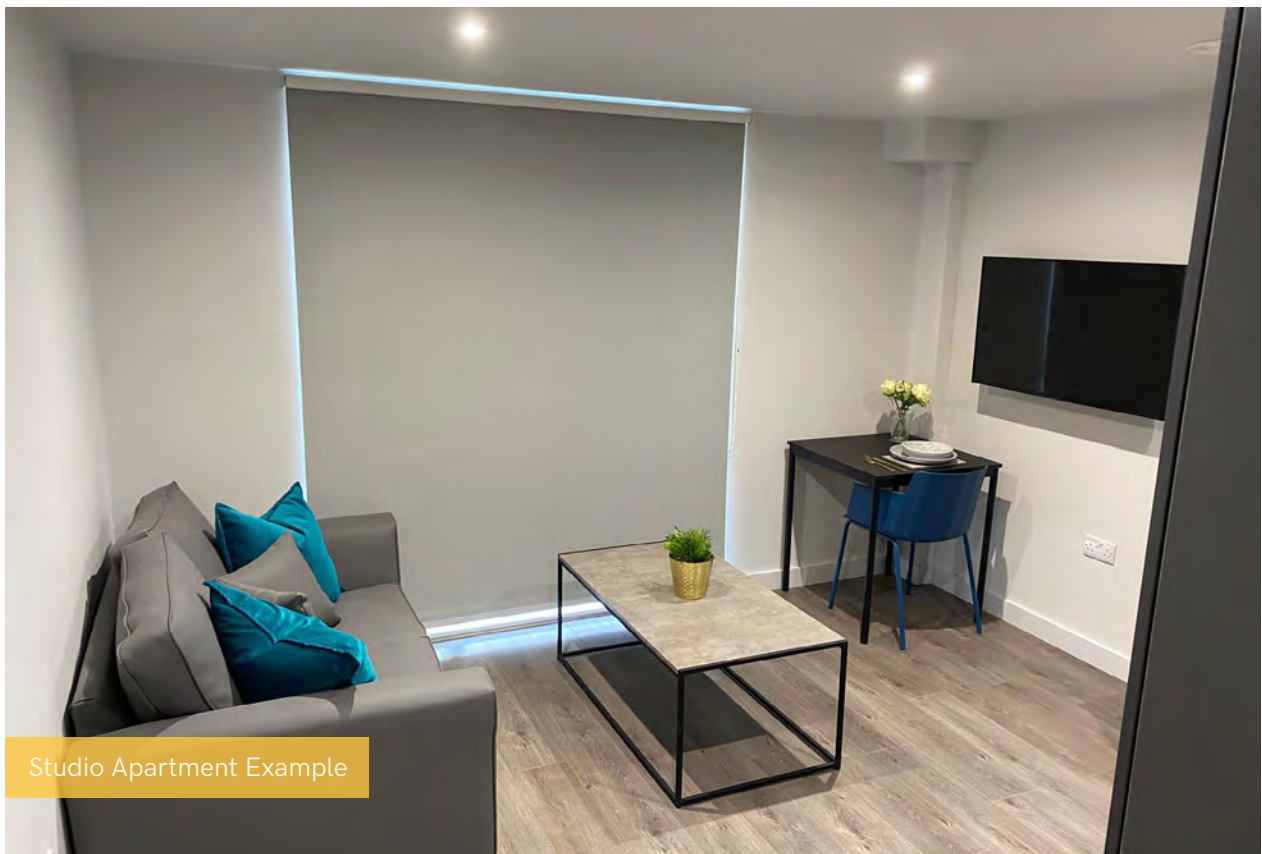


Studio Apartment Example

Studio - Show Apartment



Studio Apartment Example



Studio Apartment Example

Studio - Show Apartment



Studio Apartment Example