

# D *The Art Of* DESIGN

Issue 39 £4.95

Interiors



Décor



Bespoke



Luxury Homes







THE ESTABLISHED  
CARPET BRAND  
INVICTUS® NOW  
BRINGS YOU LUXURY  
VINYL FLOORING

[www.invictus.co.uk](http://www.invictus.co.uk)



# INVICTUS®

INVINCIBLE CARPET & FLOORING



Associated Weavers, the maker of Invictus® carpet, presents Invictus® luxury vinyl flooring.

With the same attention to quality, the same eye for exclusive designs, and a unique performance level, Invictus® luxury vinyl flooring is the perfect match to Invictus® carpet.

Always a trailblazer when it comes to branding, Associated Weavers reinvents the in-store display and brings an experience unseen in the flooring business. With traditional samples and an intuitive digital module, Invictus® luxury vinyl flooring invites the customer on a fun-to-do purchasing journey.



**A UK brand  
since 1964**



# Your destination for design

Purveyors of iconic furniture, lighting & accessories from the most exciting, international brands.



HOSPITALITY | COMMERCIAL | RESIDENTIAL

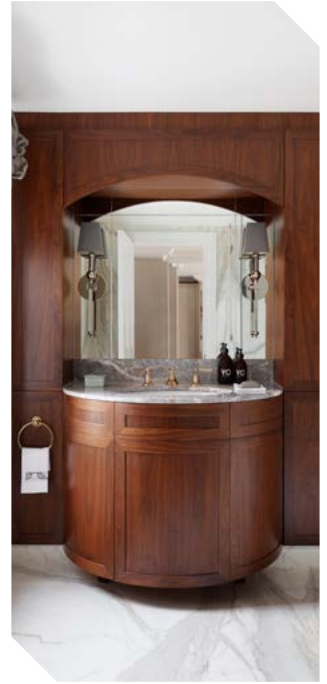
**Nest Contracts deliver premium designer furniture to any project, with quality guaranteed.**

With over 15 years of industry experience, our expert team are on-hand to keep your project on track.

**Speak to our specialists.  
Call 0114 243 3000**

**nest.**  
CONTRACTS





## CONTENTS

08

### *Belgravia House*

A classic Grade I Listed Georgian home located on the Grosvenor Estate in one of London's most prestigious postcodes.

22

### *Morgan Rakino*

CNC and the human touch: A match made in furniture. Morgan launches lounge chair collection designed by Tim Rundle

18

### *Rigby is Rigby*

Rigby & Rigby is one of the leading developers of super-prime property in some of the world's most exclusive destinations.

26

### *Maurizio Pellizzoni*

Given carte blanche to turn a five-bedroom house in Greater London into a cool party pad for a young professional.

#### **Editor in Chief**

Antony Holter

T: 01304 806039

E: editor@mhmagazine.co.uk

#### **Sales Director**

Judy Yuken

T: 01227 936977

E: judy@theartofdesignmagazine.com

#### **Business Manager**

Josh Holmes

T: 01304 806039

E: josh@mhmagazine.co.uk

#### **Editor**

Rebecca Keating

T: 01304 806039

E: rebecca@theartofdesignmagazine.com

#### **Sales Manager**

Sophie Plowman

T: 01227 936972

E: sophie@theartofdesignmagazine.com

#### **Studio Designer**

James Sayer

T: 01304 806039

E: james@mhmagazine.co.uk

#### **Publishing Director**

Martin Holmes

T: 01304 806039

E: martin@mhmagazine.co.uk

#### **Digital Manager**

Jamie Bullock

T: 01227 936971

E: jamie@mhmagazine.co.uk

#### **Accounts Department**

Alison Holmes

T: 01304 806039

E: accounts@mhmediaglobal.com

MH Media Global Ltd

Office 15, Second Floor, Innovation House, Discovery Park, Ramsgate Rd, Sandwich, Kent, CT13 9FD

Cover Image Courtesy of: SHH, architect and interior design practice

# D *The Art Of* DESIGN



Free Trade  
**Subscription**







# The Art of Design **Magazine**

The Art Of Design is a high class publication that has been fashioned for the person who understands what true design is.

[info@theartofdesignmagazine.com](mailto:info@theartofdesignmagazine.com) 01304 806039

[www.theartofdesignmagazine.com/subscribe](http://www.theartofdesignmagazine.com/subscribe)

Image courtesy of Hill House Interiors



# BELGRAVIA HOUSE

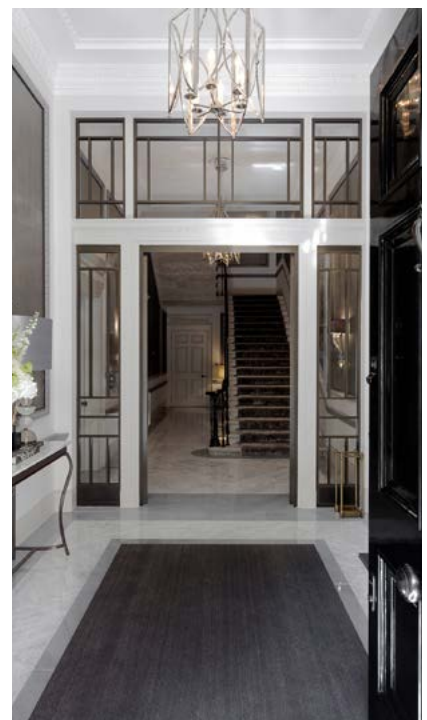
Belgravia House is a classic Grade I Listed Georgian home located on the Grosvenor Estate in one of London's most prestigious postcodes. Designed by award-winning architecture and interior design practice, SHH, the house has been transformed into a beautiful contemporary home which is sensitive to its surroundings and preserves the history of the building itself.

SHH provided a turnkey service over five years, between 2012 and 2017, which included full listed planning, complete re-build of the connected mews house, a double basement extension, complete

furniture, fixtures and equipment (FF&E) design and installation, and styling of the home including accessorization and commissioning of artwork.

The main house is 23,000 sq. ft and comprises six floors, consisting of the formal reception areas, dining room and eight bedrooms; a mews house at the back with three bedrooms and living rooms; as well as a lower ground and basement living area and spa, which connects both buildings on several levels throughout the home.

The ground floor entrance lobby draws you in with a stunning stone floor by Livra UK and lighting by Charles Edwards, which leads into a receiving room dressed in cool shades of blue and grey with Fox Linton demilune sofas and soft fabrics by Zimmer & Rohde. This floor also features a garden room reception that opens up into the private courtyard garden with a stunning orangery with a new stone stair leading to the family living spaces below.

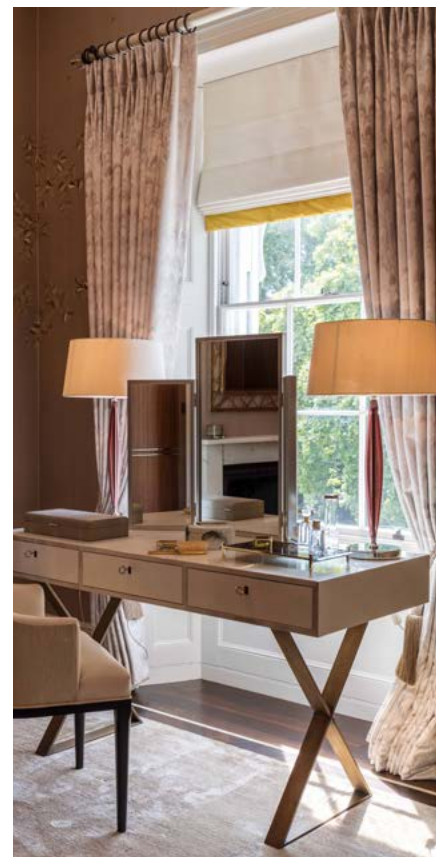




Dropping down another floor into the basement is a spa lounge elegantly dressed using bespoke furniture and fabrics from Rubelli and J Robert Scott, as well as changing rooms, massage room, and a pool hall with bespoke sauna by Drom. Fun features include a swimming flow generator and jacuzzi outlets along the length of the pool, plus a floor that rises to any specified height or to completely hide the water, providing another dining area for up to 70 people, or even a party room with a dance floor. The ceiling has a dynamic LED grid behind a stunning roof light manufactured by Dernier & Hamlyn to provide animated lighting according to guests' requirements.

The first floor contains the formal reception, a masterclass in understated elegance and uses a combination of key pieces by Amy Sommerville and bespoke items designed by SHH, with fabrics principally by JAB Anstoetz, Bart Halpern and Dedar, in addition to a large formal dining room that comfortably seats 22 guests and study.

The main house has a stunning original cantilevered stone staircase containing many historic details. This has been sensitively restored and enhanced using hand burnished metallic plaster panelling by Calfe Crimmings and displays an extraordinary four-meter-tall fluted glass chandelier.



The master suite spans the entire second floor and features a stunning bespoke bed with furniture by Koket and Baker and lighting by Gladee, Tyson and Porta Romana.

The dressing room is impeccably detailed with glass display cabinets and Murano glass lighting, while the connected bathroom has a stunning onyx wall with inset metal details and a steam shower.



## The Mews House

The mews house, consisting of five floors, features a much more contemporary design. The furnishings are a fun, cool selection of items from suppliers such as Porada, lighting by Tom Kirk and WonderGlass that reflect the more modern influence in the interiors. A stunning glass lift within a metal lattice open shaft runs between floors within a tapered cantilevered stone staircase hand carved by Ian Knapper.

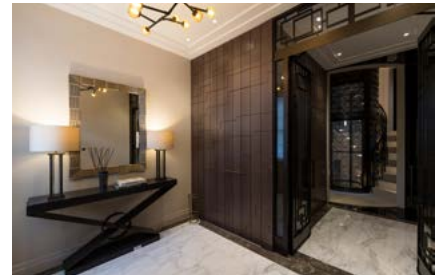
Rupert Martineau, Associate Interior Designer at SHH, explains: "Belgravia House has been designed with the utmost attention to detail, with intricately appointed interiors featuring throughout, from the historic mouldings to the junctions of the heated glazing in the spa lounge and pool hall, right down to the different colours of the stitching in the leather

panels in the media room. The FF&E finishing brings together all aspects of this project, including specially commissioned artwork by exciting up-and-coming artists and bespoke furniture and lighting, all enriching the user experience of this extraordinary home."

Thanks to a team of highly skilled architects and interior designers, contractors, engineers, and artisans, the end result is a stunning example of best practice in restoration.

Not only are the interiors and finishes sophisticated, elegant and executed to the highest standard, they effortlessly showcase the classic detailing of the Grade I Listed elements while successfully integrating all the amenities of a contemporary home.

[www.shh.co.uk](http://www.shh.co.uk)





# CHAIRS — SOFAS BEDS — and more



**WE ARE** a design manufacturer in the know and our contract interior furnishings meet the standards demanded by the hospitality industry.

**WE MANUFACTURE** contract seating and furnishings with a single goal to bring the lowest cost furniture to your door.

**WE BRING** 30 years of furniture design and manufacturing experience with many fabrics and materials. Our finishes are tough polyurethane coatings that will guarantee a long lasting life to each and every furniture piece.

**WE DEVELOP** contract furnishing designs that will add value to your project whether it is a bistro, café, restaurant, resort or hotel.

**TrinityTree Design** co-founded by Ana Basic –Interior Designer with many years successfully supplying projects in Europe and the Middle East including the Kingdom of Saudi Arabia and the Kingdom of Bahrain. Our interior design factory office located in Pravisdomini, Italy is a melting pot of colour, textures and feeling.

Together with Italian manufacturing partner Lorenzo Giovanni Rugo - a team was created to transform intuition and ideas into reality.

**Write to us - we are your design partner - [sales@TrinityTree.co.uk](mailto:sales@TrinityTree.co.uk)**

Northern Veneer & Plywood Company Ltd. | Chancery Station House

| 31-33 High Holborn | London WC1V 6AX | United Kingdom | Tel: +44-208-144-9791

| [www.trinitytreedesign.co.uk](http://www.trinitytreedesign.co.uk) | [www.trinitytree.co.uk](http://www.trinitytree.co.uk)



## TrinityTree Design™



# THE ENGLISH CABINET COMPANY

The English Cabinet Co. started its journey in 2016 when our founder, Suzi Ellis, was redecorating her daughter's bedroom.

In search of a stylish, affordable, and high quality dressing table that could become a timeless addition to her home, Suzi was struck by the lack of choice in British made goods and the attitude towards sustainability within the industry. With a desire for beautiful design and a passion for Great British quality, she had an idea...

Suzi has been married to Richard Ellis, a fourth generation furniture maker at J T Ellis, for over 20 years. J T Ellis have been manufacturing high quality contract furniture for over 125 years.

Sketching her design on a piece of paper and handing it to Richard's team, Suzi trusted in J T Ellis' heritage and values to manufacture a beautiful and functional dressing table for her home, and so The English Cabinet Co. was born.

The English Cabinet Co. is built on the belief that UK manufacturers can produce extremely high quality designs at a competitive price.

We wanted to reduce the need to ship products around the world, bringing beautiful pieces to the UK in a more sustainable manner, whilst ensuring every home has access to durable and stylish interior design.

Since the first pieces were handcrafted, the English Cabinet Co. has worked with many of the UK leading interior designers on both commercial and residential projects. Schemes have included boutique hotels, luxury bed and breakfast and large residential projects.

Designers appreciate the contract furniture quality (5 year guarantee on all cabinets) and the attention to detail, soft closed drawers and adjustable feet as standard. Short lead times are also essential for many projects and as everything is made to order within 4 weeks.

Based in Yorkshire, our factory has over 200 staff, and a strong tradition of excellence and family values when it comes to furniture manufacturing.

We also collaborate with other quintessential English furniture makers such as Lloyd Loom to produce unique pieces for the home.

"I honestly believe people really do care about where they buy their furniture from, they care if the wood is from sustainable forests and they care about the working conditions of the people making their beautiful pieces, they care about the carbon footprint left on our world from our purchases. I am passionate about delivering our customers elegant, stylish pieces that stand the test of time in both design and quality."

THE  
ENGLISH  
CABINET  
CO

**Telephone: 01484 415570**

**[www.theenglishcabinetcompany.co.uk](http://www.theenglishcabinetcompany.co.uk)**



# THE ENGLISH CABINET CO



Beautiful bedroom furniture  
available exclusively online

[www.theenglishcabinetcompany.co.uk](http://www.theenglishcabinetcompany.co.uk)





## ARMANI/CASA: NATURE AND THE EAST

The aesthetic of Armani/Casa was born from a subtle exchange between sensibility and taste, a complex process that can give rise to an unexpected harmony between different cultures. The 2019-2020 Armani/Casa collection transforms parallels and similarities between cultures into furniture and décor. The overarching theme is an expression of lightness, delivered through an exploration of subtle thicknesses, from the structures of furniture to the woven textures of textiles, which are inspired by those of the obi (the Japanese sash worn mainly with the kimono).

This notion is also expressed on seemingly rigid surfaces such as wood and leather, reshaped to suggest a new, playful identity. Oriental charm makes its return in allusions to Japanese iconography: nature, hot springs, the shape of the tsuba (the Japanese sword guard), the lightness and fluidity of the waves.

An almost ethereal sensation is conveyed by the reference to these natural elements in motion: the shades of the clouds, Asian landscapes with trees and hills that create infinity-effects, blended colours reminiscent of a sunset or reflections on the water.

Captured from nature and coursing waters are the muted shades of pink, apple green and light blue, accompanied by touches of classic colours combined with brighter, more vivid tones such as red, forest green and petrol blue.

These hues are emphasised by artisanal craftsmanship and exquisite materials, whether Murano glass or precious embroideries.

Noble traditions of working with classic elements and components meld with the use of innovative materials like resin and synthetic woven “textiles” developed for the aerospace industry.

### **Textiles: extraordinary everyday pieces**

Dedicated to the culture of slumber and rest, soft and luxurious throw blankets exemplify the taste for perfection. Onsen, which takes its name from Japanese hot springs, is composed of a doubled fabric and acts as a cashmere throw and features a design reminiscent of a poetic story, embellished with embroidered sections.



In an expression of a type of creative circularity, Oriental iconography – the cultural obsession of Giorgio Armani and frequent inspiration for his style – is found on the Oriente rug, which is used as a canvas to depict a landscape of trees and hills that vanish in the fog, resulting in an infinity-effect; to create shaded gradients and the harmony of nature in motion, pure silk threads are tied together through refined workmanship that allows for greater attention to detail – indispensable for creating a softer, more fluid outcome.





### Onda chaise longue

It is the clean, basic shape that adds a unique, contemporary touch to this chaise longue, whose unusual curvature evokes the waves of the sea.

With a structure upholstered in interwoven leather and with solid wood edges, it is a meaningful synthesis of the themes that characterise the collection: lightness and artisanal craftsmanship expressed through the most sophisticated materials.

### Small forms of luxury: Armani/Casa accessories

Every object, plate and glass is the depiction of a skilful dexterity that creates absolute delights to have in the home.

Part of the collection focuses on the table, with two new dish sets: the first, Ode, is extremely simple and alternates round shapes with the lobed style typically found in the tsuba (also present in other pieces such as the Orenge resin napkin holders and coasters); the second, October, features a more decorative style, with a landscape design applied all the way around the flat plates, reminiscent of the Okinawa fabric.

### Furniture and light: the design of life

The clean, bold, basic lines of the furniture are highlighted by exquisite finishes, both sophisticated in their pairings and refined in their materials: platinum lacquer, spotted green shell, red drafted stucco, onyx- textured metal, and green, red or blue shagreen-effect leather.



The two tables each make a unique statement: Owen, lacquered with a red stucco effect, is available in a square or rectangular shape and is paired with Ofelia, the geometric chair; while Oliver, with its geometric legs, features metallised dark green lacquer and light satin-finish brass.

Oris, in both a large and small version, is the new bed presented in the collection.

The large one features an adjustable screen-style bedhead upholstered in the Okinawa fabric.

The base, in metallised dark green lacquer, is equipped with two suspended bedside tables. The small model has a fixed bedhead and two non-suspended, dresser-style bedside tables.



### Accessories and Specialty Items

Ombra, a new screen, is offered in two versions: in the first, the slim structure in light satin-finish brass features revolving mirrored panels and the Nara fabric in light blue and gold; the second, more decorative version is equipped with fixed panels upholstered in the Okinawa fabric.

The new Orizzonte console, with its tubular structure in light metal, curved sides and top in golden sea waves lacquer, is also available in a version with a walnut top and a cognac-coloured leather structure.

[www.armani.com](http://www.armani.com)



# LALIQUE'S LIGHTING COLLECTIONS

## - NEW AND OLD - CONTINUE TO ELEGANTLY ILLUMINATE THE INTERIOR



Lalique's history spans 130 years and its creations continue to illuminate any interior with timeless elegance, from the legendary Normandie ocean liner in the 1930s to chandeliers and sconces developed today by the French crystal house and exceptional designers. Lalique combines tradition and modernity, creativity and savoir-faire, light and crystal.

Through various shapes, motifs and sizes, its pieces present the contrast between the satin and polished crystal, the play of light, reflections and transparency and the richness of detail that characterize its recognizable style. Classic designs include the Champs-Élysées chandelier in clear and gold lustre crystal, the Poséidon lamp as well as collaborations with Olivia Putman, Windfall and Delisle.

Lalique has worked with the French interior decorator and designer Pierre-Yves Rochon since 2017 on 'Signature' – a capsule collection of furniture and lighting by the decorator who is widely celebrated for the palace interiors he has created across the world from the Shangri-La in Paris, Four Seasons in London to the Waldorf Astoria in Beverly Hills.

"I have always admired René Lalique's creativity and talent. Crystal is a noble material that lends itself to many art forms – it is a material I find extraordinary for its purity and wonderful response to light." Pierre-Yves Rochon.

For 2019, Pierre-Yves Rochon has added the Perles chandelier to the "Signature" collection. After creating the Two Perruches wall sconces and the Coutard lanterns as part

of the range, the Perles chandelier is inspired by original Art Deco lighting designs created by René Lalique in the 1930s and by the graphic and symbolic power of the candle. In all cultures and religions, the candle is synonymous with knowledge and the quest for truth.

These chandeliers with neoclassical accents are highlighted by LED technology. Carved with stripes and cabochons with the satin finish emblematic of Lalique, the crowns of light are adorned with slender crystal candles, arranged in a rhythmic rigor. Metal sublimates the purity and brilliance of crystal. Highlighted by LED technology, the Perles chandelier with neoclassical accents resonates with a Grand Siècle flair and brings a touch of French elegance to the interior.

[www.lalique.com](http://www.lalique.com)



# LALIQUE

&

PIERRE-YVES ROCHON



## SIGNATURE

[lalique.com](http://lalique.com)



# CREATING THE FINEST RESIDENCES IN THE MOST EXCLUSIVE ADDRESSES IN LONDON AND BEYOND

Rigby & Rigby is one of the leading developers of super-prime property in some of the world's most exclusive destinations. Its name has become synonymous with inspiring architecture and striking interiors, combining state-of-the-art technology with traditional craftsmanship to reach a level that is unsurpassed in the industry.

Rigby & Rigby has built a reputation as a leading, international super-prime specialist of residential spaces and is part of the £2.1 billion Rigby Group Plc – one of the UK's most respected family businesses.

At the forefront of luxury property design and development management, Rigby & Rigby delivers unrivalled homes from concept to completion.

The company's full-service capabilities span across development management, Architecture (RIBA), Interior design (BIID & SBID), construction and private client services to create the most exceptional properties in the world.

Rigby & Rigby's private client special projects now represent the majority of its commissions.

From heritage to contemporary architectural projects and known for exceptional quality and delivery, Rigby & Rigby is currently working on projects in the UK, across Europe and in the Middle East and Asia.

Whilst Rigby & Rigby continues to grow, the qualities that define the company remain unchanged: a commitment to using the finest handcrafted materials, intelligent design, cutting-edge technology and an unparalleled attention to detail. In April the company handed over the keys - on time and on budget - to a double-fronted, Grade II- listed family house in Kensington which had been transformed into a spacious, contemporary and light- filled home.

Rigby & Rigby's scheme for the property included painstaking refurbishment of the original architecture features, the creation of an 85 per cent rear basement extension with a gym, pool and entertainment space beneath a spectacular, 4.4-metre high, floor-to-ceiling glazed rear wall.



In London, the company was recently appointed to develop a £100 million private house in Knightsbridge. Plans for the six-floor super-home include three subterranean levels, fitted out with a cinema, gym, pool, yoga room, and staff quarters. A humidity-controlled underground garage housing the client's collection of cars will be served by a car lift equipped with number-plate recognition technology. Extensive landscaped roof gardens will provide a relaxing oasis of calm in the heart of super-prime London.

Illustrating its versatility, Rigby & Rigby has recently been appointed to design and develop a striking 14,500 square foot contemporary interpretation of the traditional Georgian mansion on a large British country estate with extensive woodland.





The three-storey property (replacing an existing bungalow) will strike a balance between contemporary finishes and the traditional corning, picture rails and architraves of the period.

The property will include a swimming pool, cinema, secret games room and entertainment space with dance floor, as well as a wine cellar and tasting room.

A self-contained guest apartment over the garages, will be connected to the house by a glazed lobby.

Together with Helen Green Design and Lawson Robb, Rigby & Rigby is now part of Allect - London's largest residential design practice. Rigby & Rigby offer a multi-faceted design and development skillset, spanning architecture, interiors and construction, and underpinned by a robust Research & Design and tech capability. Increasingly active on the global stage, their design and build experience spans the latest hi-tech, contemporary architecture and sensitive, often listed, heritage restoration projects.

**Telephone number: +44 (0)20 3418 0446**

**Website: [www.rigbyandrigby.com](http://www.rigbyandrigby.com)**



# Outdoor Style and Elegance



CADIZ Lounge and LAGOS Coffee Table



Ferragudo Lounge Chair and Sofa



Pasturo Lounge Chair and Sofa

Sevilla Table with  
Valldemossa Chairs



With Summer just around the corner, we are delighted to present the latest collection of outdoor furniture from Borek. Pushing the boundaries of design and innovation, Borek's latest collection embraces the outdoor life in all of its colourful beauty and splendour, brightening up any terrace or outdoor area. Using the latest materials and techniques, Borek's master craftsmen have again created a stunning collection with unique properties that create a cheery, yet sophisticated and contemporary design. Consisting of the ultimate in seating comfort, stylish outdoor tables and range of outdoor living accessories in a variety of colours, Borek outdoor furniture is exclusively available through Robeys and selected retailers throughout the UK and Ireland.

## Robeys

A PASSION FOR QUALITY

Robeys Ltd, Riverside, Goods Road, Belper, Derbyshire, DE56 1UU.

Tel: 01773 820940. [info@robeys.co.uk](mailto:info@robeys.co.uk) [www.robeys.co.uk](http://www.robeys.co.uk)



## CNC AND THE HUMAN TOUCH: A MATCH MADE IN FURNITURE

Morgan, contract furniture designer and manufacturer, announces the launch of Rakino, a collection of lounge chairs and tables, designed by Tim Rundle, during Clerkenwell Design Week in May 2019.

Juxtaposing soft sculpted upholstery with a strong, low line frame, the new family of furniture features crisp timber detailing, emphasised by a clean linear structure.

Katerina Zachariades, design director at Morgan, comments, "It's been a pleasure working with Tim, who brings an international perspective to Rakino. His experience in furniture, lighting and interior design enables him to develop new product ideas with an understanding of commercial demands.

We have enjoyed developing this chair and refining our production methods to achieve the light, simple structure that defines it."

Describing his approach to the project, Tim says, "I wanted to create something that felt quiet and inviting, that could feel right in your home, while being appropriate for hard working contract environments."

Morgan has a tradition of naming its collections after places, which Tim embraced. He explains: "It only felt right we choose a New Zealand name, being designed by a Kiwi, albeit London based.

Rakino is one of a cluster of small islands in the Hauraki Gulf, the body of water

surrounding Auckland's east coast. There people are able to escape the busy city, a short boat ride leaving you with a pleasant sense of isolation and calm.

A comfortable low lounge chair in a busy hotel or workplace could, I hope, provide the same feeling."

Morgan will launch the Rakino collection at its London showroom (1 Dallington Street, EC1V 0BH) during Clerkenwell Design Week (21-23rd May 2019).

**For further information about Morgan, visit [www.morganfurniture.co.uk](http://www.morganfurniture.co.uk), or email: [info@morganfurniture.co.uk](mailto:info@morganfurniture.co.uk)**



# THE ART OF TERRAZZO

Browse the range and order free samples online



*Diespeker & Co*

• QUALITY STONE SPECIALISTS SINCE 1881 •

+44 (0)20 7358 0160 • [www.diespeker.co.uk](http://www.diespeker.co.uk) • [sales@diespeker.co.uk](mailto:sales@diespeker.co.uk)



## DESIGNS ARE HOT AT FURNITURE CITY

Becoming 'Furniture City' once again for 3 days this July, Manchester is home to the Manchester Furniture Show (MFS), the hottest furniture and interiors show of the summer. Established and new exhibitors will flood the halls of the prime city centre venue - Manchester Central, from Sunday 14th to Tuesday 16th July.

With charm and a relaxed appeal, MFS is a show for serious business with 150 A List UK and international exhibitors showing their latest product collections for every level of the market. The show attracts big name retail and design buyers looking for the latest products on the market in all types of furniture and accessories.

MidPoint - the 'show within a show' features exclusive brands from Europe and the UK showing alongside the MFS exhibitors in the connecting Charter Hall. Contemporary, high-end collections in cabinet furniture, upholstery, occasional furniture and lighting will be on display.

From Italy A.L.F. Uno SpA show their streamlined, modular cabinet collections in on-trend colours and flawless design. Fellow Italians Italia Living have the ultimate in Italian leather seating chic. Their aim is to combine shapes, materials and colours to produce products of impeccable quality - one look at their latest models will show you that they succeed. In-vogue sofas and chairs will also be on show from Polish experts Gala Collezione, SITS, and new exhibitor Kler, will

bring long standing expertise and choice materials to their neat and fashionable designs. Rich colours and eye-catching styles will grab attention and offer diverse and interesting choices a plenty.

Baker, Kesterport and Chelsom add the cabinet spice at MidPoint, mixed materials will abound and combine to produce distinctive and impressive furniture for every type of room and space. Chelsom's specialist, futuristic occasional furniture pieces perfectly complement their renowned lighting - both made for high-end commercial and residential use. Kesterport also supply select commercial and residential properties with luxury, top-drawer furniture and upholstery. Beautifully designed and executed their products are inventive and world class.

Returning exhibitors in the main part of MFS include plenty of renowned UK brands including in upholstery, Buoyant, Westbridge and Whitmeadow. With their newly established brand - The Branded Furniture Company, Whitmeadow will show new models in the dramatic Orla Kiely Upholstery collection as well as new models in their Content by Conran collaboration. Westbridge continue to wow buyers with their sumptuous sofas covered in luxurious plains and splendid patterns - see their new Slouch model for a slice of modern sofa glory.

There are plenty of heroes in bedroom and cabinet furniture too - opulent beds will be on show from Hestia, whose parent company



Furmanac is the largest manufacturer of high-end and mid-range motion beds in the UK.

Whitmeadow's bed studio will comprise their latest lavish and beautifully covered upholstered beds in twenty-first century styles. New cabinet collections from imaginative Rowico include a perfectly designed Scandinavian dining range and a dark living and dining collection full of drama.

Ever ingenious Blue Bone also have a new Scandi style collection called Oslo, it exudes the cool style of the city it's named after with a touch of flair added in.

**Manchester itself plays a huge part in the buzz of MFS as 'Furniture City' comes alive! For more information and to register for your free entrance please go to: [www.manchesterfurnitureshow.com](http://www.manchesterfurnitureshow.com)**



Manchester  
**FURNITURE**  
SHOW

MANCHESTER CENTRAL  
**14-16 JULY**  
2019



# THIS SUMMER'S HOTTEST FURNITURE SHOW

FEATURING MIDPOINT

Register now at [manchesterfurnitureshow.com](http://manchesterfurnitureshow.com)



# AMERICAN DREAM

Maurizio Pellizzoni was given carte blanche to turn a five-bedroom house in Greater London into a cool party pad for a young professional. Maurizio's starting point was the glamour of old Hollywood movies. He opted for a smoky colour palette and chunky, masculine furniture and oversaw everything from the joinery to the wallpaper to the fixtures and fittings.

As a nod to boutique hotel design, he themed each bedroom, but the piece de resistance is the attic which he transformed into a 'giant playroom' -complete with a retractable cinema screen, a pool table and a bar.

The brief for this modern Greater London property was to create a comfortable space for entertaining friends and taking time out from the city. Maurizio Pellizzoni drew on the style of a classic Hollywood lifestyle that suited the modern architecture of the house and met the client's desire to create a fun bachelor escape.

Maurizio Pellizzoni started with an empty but pristine shell and transformed it with new furniture, soft furnishings artwork and accessories. Some existing fixtures were kept and updated in respect of the client's budget, for example the main staircase was





given a makeover with new paintwork and wallpaper to give it a more masculine edge, but otherwise Maurizio Pellizzoni was given carte blanche to ring in new changes.

The open plan living room has double doors into the garden was large enough for a generous corner sofa from Flexiform to frame the space and create a cosy corner in front of the fire. Custom made units provide ample storage for electronics, gadgets and a large DVD collection. The client was persuaded to keep the expensive existing kitchen but it was re-styled with design accessories, modern artworks and feature lighting from Tom Dixon to give it a more up-to-date identity.

The bedrooms were each designed with a different theme, a fun element borrowed from the style of boutique hotels for the client's guests.

Upstairs the large attic space was given over to a cinema room, which has a pool table, 20-seat Poliform sofa and retractable cinema screen.

Two life-sized figures of Batman and Joker belonging to the client, flank the entrance and add a touch of humour. References to Hollywood continue throughout and the moody colour palette provides a suitable backdrop for after hours entertaining.



Interior design by Maurizio Pellizzoni  
(Maurizio Pellizzoni Ltd)

**[www.mauriziopellizzoni.co.uk](http://www.mauriziopellizzoni.co.uk)**

*Photography by Jake Fitzjones Photography*



# SBORDONI



In a world of ever-changing fashions Sbordoni has, for over one hundred years, remained reassuringly constant, offering the lasting values of design, quality and craftsmanship that rise above passing trends.

The Alessandro Sbordoni Ceramics Company was established in 1910 by Alessandro Sbordoni. Initially, the production focused on artistic pottery and in the 1920s was broadened to encompass ceramic sanitary ware. A second manufacturing site was opened in 1925 on Via Flaminia – Civita Castellana, Viterbo, followed by a third site in the borough of Stimigliano Scalo.

The company started in an Italian town that has always been at the heart of Italian sanitary ware production, where pottery has been made for thousands of years.

Each individual piece is manufactured using high-quality vitreous china, by local craftsmen whose families have been learning and practising their skills over many generations.

Markets today are saturated with mass-produced goods but Sbordoni takes pride in the personal involvement, care and artisan flair of its makers. The process - from the preparation of the clay, its casting, hand-finishing, glazing and selection - is the work of talented and experienced craftsmen and results in pieces with an individuality that reflects their heritage. The Sbordoni Neoclassica™, Sbordoni Palladio™ and Sbordoni Masaccio™ collections, showcase unparalleled original design that still testifies to the talent of Alessandro Sbordoni, who conceived the designs in the 1930s and 1940s.

A Sbordoni bathroom will bring beautiful classical design into your home, each piece unique and the result of hundreds of years of experience. In Sbordoni is the origin of these beautiful, timeless designs and sanitary fittings are marked with the original brand, hot-stamped on the china surface.

The small differences between products, when present, confirm the craftsmanship and authenticity of our products that are all made in Italy. All of our sanitary fittings including our luxurious brassware, furniture and accessory collections, have been rigorously tested and have obtained the CE marking.

**[www.sbordoni.co.uk](http://www.sbordoni.co.uk)**  
**020 8685 6815**





 SBORDONI®



020 8685 6815  
[www.sbordoni.co.uk](http://www.sbordoni.co.uk)



# MAYFAIR RESIDENCE

**By Oliver Burnes**

Situated in one of the most exclusive and secure private enclaves in Mayfair, overlooking picturesque private gardens, Oliver Burnes designed this beautiful Georgian townhouse for a lovely family that they have worked with for many years.

A technically challenging listed building in a state of disrepair, Oliver Burnes were responsible for the architecture, architectural interior design and management of the project; working closely with the Grosvenor Estate, English Heritage and conservation officers to spearhead its thoughtful restoration.

Set over five stunning floors, opulence was the central theme for the design brief, reflecting their client's love of glamorous details.

A very soft, feminine palette with hues of blush, pink and gold coalesce with crystal chandeliers, stunning book-matched marble, voluminous window dressings and deep carpets, to create the ultimate luxury Mayfair home.

A beautifully proportioned entrance hall paved with Crema Marfil marble sets the tone of this elegant family home. Restored original wall panelling provides a striking backdrop for a crystal chandelier and centre table whilst a patterned border that mixes Emperador, Galliano Sienna and Verde Luna marbles makes a captivating statement.

In order to incorporate a lift with access to all floors into the building, Oliver Burnes designed and relocated a new staircase and extended the basement to the rear of the property; in turn doubling the size of the space.

Challenges around M&E due to its listed status were overcome to deliver air conditioning and underfloor heating throughout. Oliver Burnes also created a new roof with a beautifully formed skylight that lights the way up the grand staircase through the house, acting as the jewel in the crown of this Georgian gem.

***A very soft, feminine palette with hues of blush, pink and gold***

Leading off from the entrance hall, the formal dining room is a glamorous space for entertaining. Here, the pièce de résistance is the silk Fromental hand embroidered and hand painted blossom wallpaper in delicate sage green and pinks. The high gloss dining table with meticulously book-matched veneer and the chandeliers above finish off the design effortlessly.



The fine details, the panelling and cornices, the original fireplace and huge great windows, have all been retained, but now they come with bespoke joinery with acoustic panels, a Chloe Alberry mirror and antique mirror shelves.

The ground floor is as much about functional living as it is about style. The house kitchen is a sleek interplay of textures – high gloss Birds Eye maple veneer with a brass trim and glass handles mix with Taj Mahal marble worktops – housing state of the art appliances, illuminated by a Barovier & Toso chandelier. The banquet seating area around the bespoke high gloss table maximises space.

### **A sleek interplay of textures**

All floors are linked by the graceful sweep of the staircase, emerging on the first floor to a luxurious reception room which offers two distinctive spaces for relaxing and entertaining. The design highlight in this space is the hand painted Fromental Eleanora chinoiserie feature doors on the bespoke media and display unit.

An interpretation of an 18th century Chinese tree of life mural, this was created in a bespoke colourway to complement the soft palette of the scheme.

At the other end of the room, a formal seating area in front of the restored marble fireplace creates an inviting space to entertain. Also on the first floor is a private study in rosewood – a classic masculine space reminiscent of a gentleman's club.

Challenges around M&E due to the building's listed status were overcome.

The stairs lead fluently up to the second floor which is exclusively dedicated to the sumptuous master suite, comprising a bedroom, his and her bathrooms & his and her dressing rooms, which occupy the entire level. Outstanding attention has been paid to the bathrooms, one distinctly masculine, the other wonderfully feminine.

Handsome walnut characterises his bathroom, with Calacatta Oro marble contrasted with a Tundra vanity top.





Antique gold sanitary ware adds to the opulent feel of this space, whilst the in-shower TV provides a contemporary touch. Discreet double pocket doors recess into the dressing room to create a subtle transition between rooms.

Her bathroom is a luxury oasis, the ultimate place to relax and luxuriate, with stunning book-matched Palissandro marble throughout.

Champagne gold eucalyptus joinery combined with gold and crystal sanitary ware creates a glamorous statement in this luxe environment.

A further 4th floor is home to the second and third suites, formed of a palette of metallic, blush and pinks.

Seven further generously sized rooms are located at lower ground level, where a private cinema, wine room, gym and adjoining sauna can also be found.

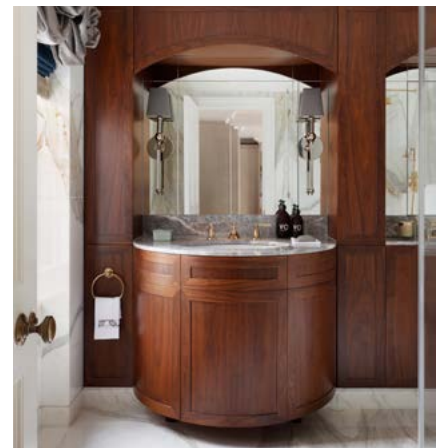
Like a shimmering cascade, hundreds of lengths of draped crystal combine and link to illuminate the arresting chandelier in the deluxe Cinema room, suspended at a low height to create the illusion of a coffer detail.

Neutral wallpaper shimmers with metallic details and blush draperies, delicately embroidered, provide a beautiful setting for the Fendi sofa and Visionnaire swivel chairs – the picture-perfect place to relax and watch a film.

Coupled with meticulous attention to detail, we returned the property back to its former glory.

Oliver Burns restored every inch of this period building, reinstating many of the original features to reflect the heritage of the house. Coupled with meticulous attention to detail, Oliver Burns returned the property back to its former glory – a true 18th century beauty.

[www.oliverburns.com](http://www.oliverburns.com)





# CHOOSE A STRIKING TERRAZZO FOR THE WOW FACTOR

---



London's premier terrazzo specialist Diespeker & Co has experienced high levels of interest in one of the latest additions to its range of designs, a strong style-leader that simply cries out to be the centre of attention.

Statement terrazzo TE081 has a cream base with sizeable chunks of marble in dominant colours including greens, oranges and ochre, and smaller chippings in white, yellow and pink. As one of the more striking terrazzo designs in the range, it is ideal for clients who want to add pizzazz to their home. It is a superb choice for kitchen countertops.

Such a strong look works well within a neutral interior design, so it is best teamed up

with pale wall and floor colours, and lighter varieties of wood. The strong colours can be reflected and accentuated in accessories, such as lighting fixtures and vases.

To ensure the look is sleek and beautiful, Diespeker can also provide matching side panels for kitchen islands as well as splashbacks for a sink area. Additional features to give extra flair such as a matching terrazzo windowsill or terrazzo handles for drawers are all easily achievable.

In a kitchen environment, practical details are as important as aesthetics. As Diespeker has its own factory in London complete with the latest in Italian equipment, considerations

such as precision cutting for hobs and grooves for water drainage are all part of the service.

Suitable for both commercial and residential projects, TE081 is available from Diespeker's Standard range. It's a resin based terrazzo available in 12, 20 and 30mm thickness. For those preferring a more traditional looking terrazzo, Diespeker has recently added a similar design in cement, TE084. And for fans of polar opposites, TE081B offers the same design in a black base.

**[www.diespeker.co.uk](http://www.diespeker.co.uk)**



## FUSION HERALDS A NEW ERA OF ELEGANCE AND EXCLUSIVITY IN EALING'S W5

A new era of luxury living has dawned in enchanting Ealing with the creation of The Birchwood, a bespoke development of six beautiful apartments.

Conceived and crafted by boutique multi-award winning design house, Fusion, The Birchwood inspires an era of elegance and exclusivity never previously experienced in Ealing.

Enjoying an elevated position in Park View Road, the borough's most prestigious thoroughfare, The Birchwood boasts a W5 London postcode making it the capital's finest and newest country retreat.

The design brief for the project was pioneering and innovative. Make no mistake, The Birchwood is set to raise the bar to new heights and has become Ealing's most prestigious address.

It is one of the most visionary projects London has seen in recent years.

This building of majestic proportions manifests a masterful blend of design, technology and sophistication - homes fit for a prince in this, the Queens of London suburbs.

It has been created by 'The Design Studio At Fusion' with a collaboration of the best craftsmen, designers and artisans using the most beautiful colour palettes, textures, materials and objets d'art sourced from around the globe.

Boasting six sumptuous three and four-bedroom concierge serviced apartments, The Birchwood, which gets its name from the birch garden that's planted around the site, redefines perceptions of aesthetic achievement and push the boundaries in terms of exquisite finish, attention to detail, specification and classical styling.





The triple aspect lateral apartments boast expansive and exquisite wrap-around terracing in which to entertain and enjoy life's finer moments while the uber-luxurious penthouse covers the entire top floor and affords 360 degree panoramas of London, with clear views out to the Shard and beyond.

The four-bedroom garden apartment meanwhile at over 2,500sq.ft. features the most sensational courtyard garden in which to celebrate the myriad joys of life.

From the secure and gated underground parking with heated ramp to the bespoke lift which elevates you to your apartment and the concierge-managed cold store for grocery deliveries, every wish has been granted, every desire attended to.

Each apartment has luxuriant Lutron mood lighting, Comfort Cooling and the very latest

life enhancing adornments leaving you in no doubt that to take possession of a Fusion residence is to take control of destiny.

The apartments also feature exotic hand-crafted accoutrements, marvellous Carrara marble kitchens and wet-room surfaces, rich natural wood architectural features and tantalisingly tactile wall and floor coverings confirming you have truly arrived at a heaven on earth.

Established more than a decade ago, Fusion has developed an enviable and unrivalled reputation for creating the most exceptional residences in the most exclusive locations around London.

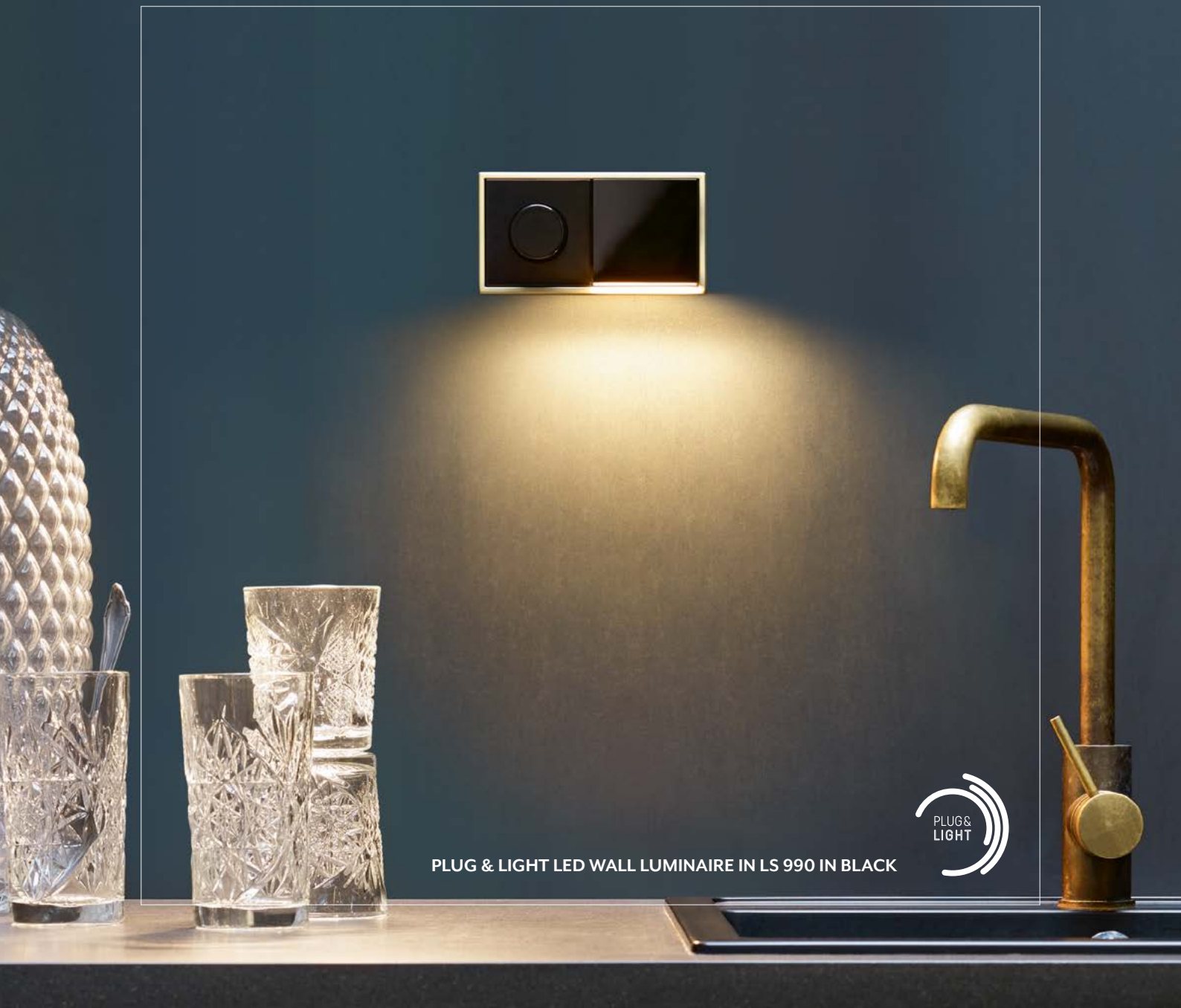
**+44 (0) 1923 294 136**

**[fusionresidential.co.uk](https://fusionresidential.co.uk)**

**Instagram: @fusionresidential**





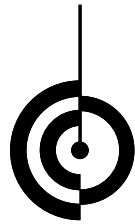


PLUG & LIGHT LED WALL LUMINAIRE IN LS 990 IN BLACK



## Rethinking light

Plug-in lighting moods. Plug & Light redefines lighting design. Perfectly dimmable LED light with spotlights or wall luminaires.



## CONTEMPORARY CHANDELIER COMPANY

Founded in 2002 by husband and wife team, Iestyn and Beverley Davies, The Contemporary Chandelier Company emerged from a desire to see their own hand-blown sculptural work brought to life with light. The intention was to develop and diversify their existing art glass business "Blowzone" into a new venture; encompassing the new emerging LED technology and combining it with their considerable expertise in glass design, manufacture and aesthetics.

"We were the first UK lighting company to use LEDs as an unseen light source, using the effect of the light through our glass, rather than just creating glass shades" says Iestyn Davies, who is the company's Design Director.



CCC is now one of the country's leading bespoke Chandelier manufacturers and designers, still a small family-run company that takes pride in its individual and personal service, creating innovative and site-specific projects for discerning clients worldwide.

"We still get excited by a challenging brief that may take us outside of our normal responses, pushing both our artistic and technical boundaries"

The company continues to expand its portfolio of materials and finishes, working with architects, design consultancies and specifiers, but ultimately specialising in projects, working directly with the client in high-end domestic projects.

This personal approach is key in order to capture the intention and spirit of the project; the approach and execution of a project is always the same no matter what the size.

The Contemporary Chandelier Company are currently overseeing the installation of a flotilla of their jellyfish for the Blue Fin Restaurant in Times Square, New York as well as three installations for the new P&O Cruise liner, the Iona. Iestyn adds "I am proud that our small team creates work that adds artistic merit to projects throughout the world, and will continue to create comment and reaction for many years to come"

**Contemporary Chandelier Company Ltd ,  
Trench Farm, Tilley Green, Wem, Shropshire,  
SY4 5PJ, UK  
Tel : +44(0)1939 232652 - [www.ccc.glass](http://www.ccc.glass)**







## CONTEMPORARY CHANDELIER COMPANY

Introducing our latest range - Autumn Leaf. Each leaf is completely handmade; hand cut from brass sheet, hand pressed, patinated and shaped in our Shropshire studio.

Bespoke Lighting Designs by iestyn Davies - an unrivalled combination of style and substance. The Contemporary Chandelier Company delivers a seductive blend of the latest LED technology with a refined aesthetic, creating unique lighting that offer today's interior designer both flair and efficiency.

Premium materials, elegantly crafted in the UK, delivering pure innovation.

Lighting Design, installed, worldwide.

Contemporary Chandelier Company Ltd,  
Trench Farm, Tilley Green  
Wem, Shropshire  
SY4 5PJ UK

Tel : +44(0)1939 232652

For information on all our work, please visit:

[www.ccc.glass](http://www.ccc.glass)



## BUTLERS WHARF TOWER BRIDGE APARTMENT DESIGN BY MAISHA DESIGN

Our clients' Thames riverside three bedroom lateral flat is situated in the famous and listed Butlers Wharf building. It is a stunning warehouse conversion with beautiful exposed brick and character cast iron windows. Situated on the third floor it has a stunning view of the iconic Tower Bridge, which is just 200 metres away which provides the perfect backdrop for our interior design.

Our clients wanted a London home for entertaining their friends and guests - a space that was exciting and special where they could stay and be very comfortable. The project took one year from start to finish which included a full reconfiguration of the floor plan, electrical plan and bespoke furniture and finishes.

The vision for the design was to create an elegant and comfortable space with luxurious touches and a drinks bar for entertaining. The floor and lighting plan was redesigned to allow more open spaces and more light to fill the flat, as the ceilings were low and the original design left the flat feeling dark and claustrophobic. From the moment you enter, we used recessed wall radiators throughout the apartment to ensure a clean and sleek finish. The sitting area is highlighted with rich burgundies and creams, with smoked glass and dark wood accents, while the bedrooms have distinctive pops of colour and pattern – each with bespoke joinery and individual upholstery. Every area throughout has its own theme yet is connected to one another through its beautiful custom-made furniture and running brass and smoked glass theme.





It was very important to us that each element in the design followed a subtle continuity.

The standout features of this apartment, are the spectacular illuminated Alabaster bar, the en-suite copper and brass marble bathrooms and the glass wall between the hallway and the guest twin bedroom which adds light to the inner hallway. All these features add to the design to elevate the apartment to a higher sense of luxury.

Our design concept for the kitchen which is located off the main sitting and dining area concentrated on a completely hidden kitchen with no visible appliances in the living area to create a living and dining space that is designed for entertaining.





We discreetly tucked the kitchen away behind beautiful smoked glass pocket doors, which we incorporated into the design of what is the main feature of the living area: the bar.

To create something truly spectacular for the bar, we designed a bespoke lit alabaster bar with tailored panels on each side, framing both the bar and pocket doors. This ensured that the main focus of the living area is the alabaster, which is simply stunning and deserves to be celebrated in this way.

In the living area and hallway, we chose a burgundy-pearl colour palette with delicate brass and smoked glass accents. The rich burgundy tones of the furniture and lamps complement the glowing alabaster bar beautifully and give the living space a soft yet elegant ambience.

The smoked glass is replicated in the kitchen doors and the lamp details, while the brass is evident in both the lamps and studding of the bespoke furniture.

Every detail has been carefully considered, such as the geometric pattern on the rug that is mirrored on the back of the dining chairs, to create a sophisticated coordinated interior. A pair of base lamps, on either side of the sofa, were chosen to provide low level lighting for intimate evenings and the lit up bespoke wall joinery adds a soft feature to the room, allowing the client to add a personal touch with ornaments, books and accessories. But the true star of this space for us is the bespoke Alabaster bar. It was handcrafted by Atelier Alain Ellouz and carefully designed to fit perfectly into the panelled wall.





All three bedrooms are situated at the opposite end of the apartment, facing the famous cobbled walkway of Shad Thames. It was important to our clients to inject colour into the bedrooms whilst maintaining a neutral backdrop. Each bedroom therefore has subtle pops of individual colour, whilst maintaining the underlying neutral-brass theme of the apartment.

Bespoke wardrobes with a brass inlay and brass leather handles designed by Maisha are incorporated into each bedroom to complete the concept of luxurious touches. For the master bedroom we chose a purple and turquoise palette against a soft neutral base and followed the same concept for the guest bedrooms albeit changing the colours

to stunning blue and yellow and vibrant blue and terracotta combinations. Each cushion, button and trim was selected to create a balanced colour combination.

One key aspect for our clients was to have luxurious and unique bathrooms for both the master and guest bedrooms. We therefore chose an elegant marble theme and combined this with distinctive taps by the Watermark collection and smoked glass shower panels for a stunning finish. In order to distinguish the master bathroom from the guest bathrooms we decided to choose a rich verde fantastico marble stone against antique brass taps in the master and a deep noir st laurent marble stone against copper taps for the two guest bathrooms.

The lighting was designed to accentuate the best features of the bathroom: the stunning marble walls and copper taps. We designed three lighting circuits that could be used to highlight different parts of the bathrooms and so create different atmospheres within. The first circuit is dedicated to general lighting and is composed of a grid of down lights for everyday use.

This is complemented by the second circuit, which creates subtle focal points and task lights by lighting up the niches, shower wall and mirror cabinet. The third circuit is more atmospheric – it is activated with a sensor and turns on a soft LED light wash under the sink and bath creating a beautiful floating effect and a soft night light.



The result is stunning and makes these bathrooms truly unique.

The second key feature of this apartment for our clients is the alabaster bar. It is a spectacular piece of craftsmanship and gives the living space a unique look and feel.

We chose this material not only for its stunning look and feel, but also for its hardwearing quality. It is treated with resin, which turns this incredibly delicate and fragile stone into a resilient and durable element, perfect for bar counter tops.

What makes this material even more striking is the fact it is lit up by LEDs, which can be adjusted from warm to cool, depending on the mood and time of day. Our clients wanted a dramatic feature in their living area and this alabaster bar emulates drama and luxury gloriously. Overall, we concentrated on a design that allows more light to shine through the apartment to eradicate the dark corridor-like feeling.

The double doors of the middle bedroom were removed and replaced with a fixed glass panel to allow light from the riverside end of the flat to flow down the hallway and lighten the middle guest twin bedroom. This creates a new focal point in the apartment and has transformed a dark and claustrophobic area to a welcoming and light flooded space.

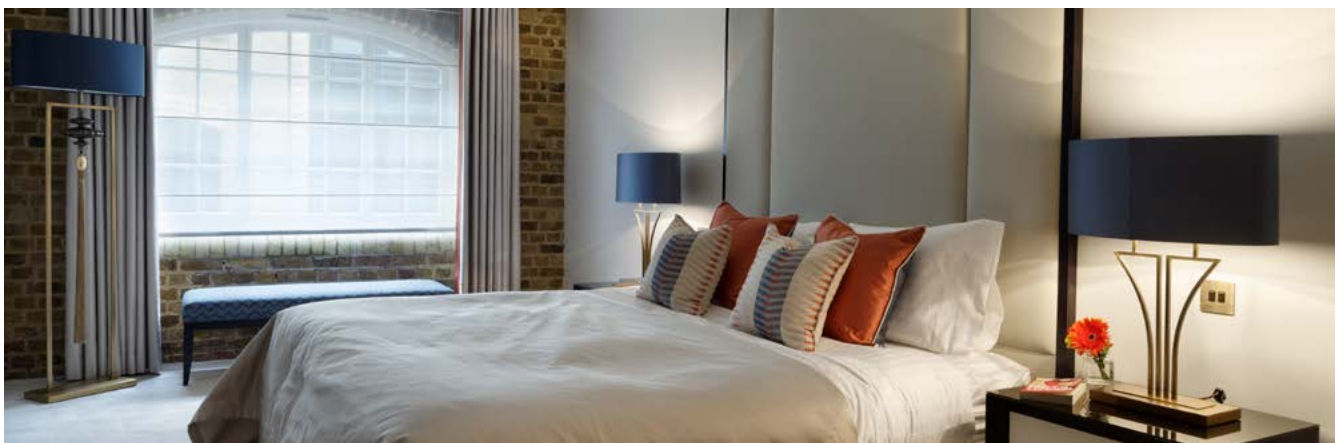
As a designer the highest form of approval is of course the one of our clients, who were delighted and quite emotional when we took them to see their new flat for the first time. They told us that they had never imagined the flat could look as beautiful as it does.

The interior design has since been voted Best London Residential Apartment Interior Design by the International Property Awards.

**[www.maishadesign.com](http://www.maishadesign.com)**

**Photography by Richard Gooding**

**Styling by Nick Lee niche pr**







## Ultra-discreet loudspeakers for any location

British loudspeaker designer, Monitor Audio, has a range of Custom Install speakers for every situation. Their ultra-discreet In-ceiling and In-wall speakers deliver a stunning audio performance whilst protecting the room's décor. For more extreme environments, such as outdoor terraces or pool rooms, they offer a choice of speaker ranges, all of which deliver Monitor Audio's award-winning sound.



[monitoraudio.com](http://monitoraudio.com)



# LD SYSTEMS MAUI P900 – TECHNOLOGY, ART AND DESIGN IN HARMONY

The more elaborate the planning that goes into an event or interior design, the more complex the requirements placed on the integrated sound system become.

What's the use of powerful and perfectly balanced sound with consistent dispersion if the speakers and amplifier components unattractively clutter the space, thereby detracting from the overall aesthetic and the interior's or event's meticulously created visual message?

Whether it's a modular system comprising many individual speakers or a full-range system: in the residential and commercial sector, an audio and sound system is only as good as its ability to integrate into the overall concept.

As a result of the increasing relevance of customer acquisition and retention events, as well as of the increasing appreciation of exclusive interior designs, architects, planners, service providers, agencies and corporate clients now face different challenges.

In a nutshell: The requirements for event and room concepts are steadily becoming more demanding – as are those for the integrated technology.

## The Audio Sector Responds

Almost all pro-audio manufacturers now feature compact column systems in their portfolios and usually offer specialised products and series for seamless room integration.

In addition to the trend towards increasingly smaller, and even miniature design, users are beginning to focus on the design aspect and language of equipment housing.



PA systems are not only serving to provide sound, but also act as elements of interior design – a trend in which the MAUI P900 from LD Systems is leading the way as a pioneering example.

Developed in collaboration with the Porsche Design Studio, the MAUI P900 combines state-of-the-art technology with an iconic design and exclusive materials in a unique audio product.

In this way, the active column PA from LD Systems completely redefines the boundaries between technology, art and design.

An achievement which has been rewarded with the German Design Award, the iF Design Award and recently, for the second time, with the Red Dot Award for Product Design.

## Daily Life Incorporated

Design and function go hand-in-hand and are mutually dependent. The LD Systems developers behind the MAUI P900 recognised this and equipped the column PA system with convenient features that modern users are familiar with from their everyday lives

with smartphones, wireless headphones and smart home entertainment systems, and which are a standard requirement for professional solutions – above all wireless playback via Bluetooth streaming.

## Smart Streaming

In addition, two MAUI P900 systems can create a true wireless stereo sound. This allows users to conveniently control playback from their smart device via Bluetooth streaming without any annoying cables detracting from the quality of the room design, or in the worst case, adversely affecting freedom of movement through the room.

What good is an award-winning design and simple set-up when the audio system doesn't fit the interior design? The creators of the MAUI P900 considered this too. The column system is available in three premium colours (Cocoon White, Platinum Grey and Graphite Black), which integrate into almost every event and conference environment.

**[ld-systems.com/mauiP900](https://ld-systems.com/mauiP900)**



Design by  
**PORSCHE DESIGN  
STUDIO**

# Monumental Clarity

## **MAUI® P900**

### A GROUNDBREAKING VISION IN PRO AUDIO

Imagine a modern art audio system. Imagine a pure design, pristine sound clarity and monumental power. Creating the MAUI P900, we set out to combine state-of-the-art audio technology and sleek elegance into a loudspeaker system that breaks new ground. Merging inspired aesthetics with technical excellence, the MAUI P900 is a vision come true.

Expand your horizon at:  
**ld-systems.com/maui900**

DESIGNED & ENGINEERED IN GERMANY  
 LD Systems® is a registered brand of the Adam Hall Group.



**LDsystems**   
free your sound

# WHAT IS THE 2019 CLEAN AIR STRATEGY AND HOW WILL IT AFFECT WOOD BURNING STOVES?



DEFRA included wood burning stoves in their 2019 Clean Air Strategy.

Their aim by doing this is to help reduce the amount of harmful emissions that affect our air quality by ensuring stove manufacturers improve the performance and efficiency of their stoves.

By January 2022 it will be law that all solid fuel appliances sold after that date have to be Eco Design Compliant.

To be Eco Design Compliant, stoves will need to significantly improve emissions when compared to current stoves on the market or to open fires.

## INTRODUCING CAPITAL'S FUTURE PROOF ECO 2022 STOVES

At Capital we launched our first range of fully compliant Eco 2022 Ready Stoves in 2018. We were proud to do this knowing we were one of the first companies to have stoves that were already achieving the necessary standards. These stoves have been designed to significantly reduce the level of harmful air pollutants and run more efficiently using less fuel, so will cost less to operate.

Capital Eco Stoves have been tested in an independent approved test house and have achieved the requirements of Eco Design Regulations.

Registration has also been made with HETAS (HETAS is a national organisation working for consumer safety and the wider public interest in safe, efficient and environmentally responsible use of biomass and other solid fuels) and DEFRA.

Helping to improve the quality of the air we breathe is a key part of our business philosophy. Vital to that strategy is our continued work on Eco 2022 Ready Stoves and our partnership with the National Forest.

**For more information and to view our full range of Eco 2022 Compliant Stoves, please visit our website [www.capitalfireplaces.co.uk](http://www.capitalfireplaces.co.uk)**





# ECO2022

PRODUCING FEWER EMISSIONS FOR A  
HEALTHIER AND **GREENER** PLANET

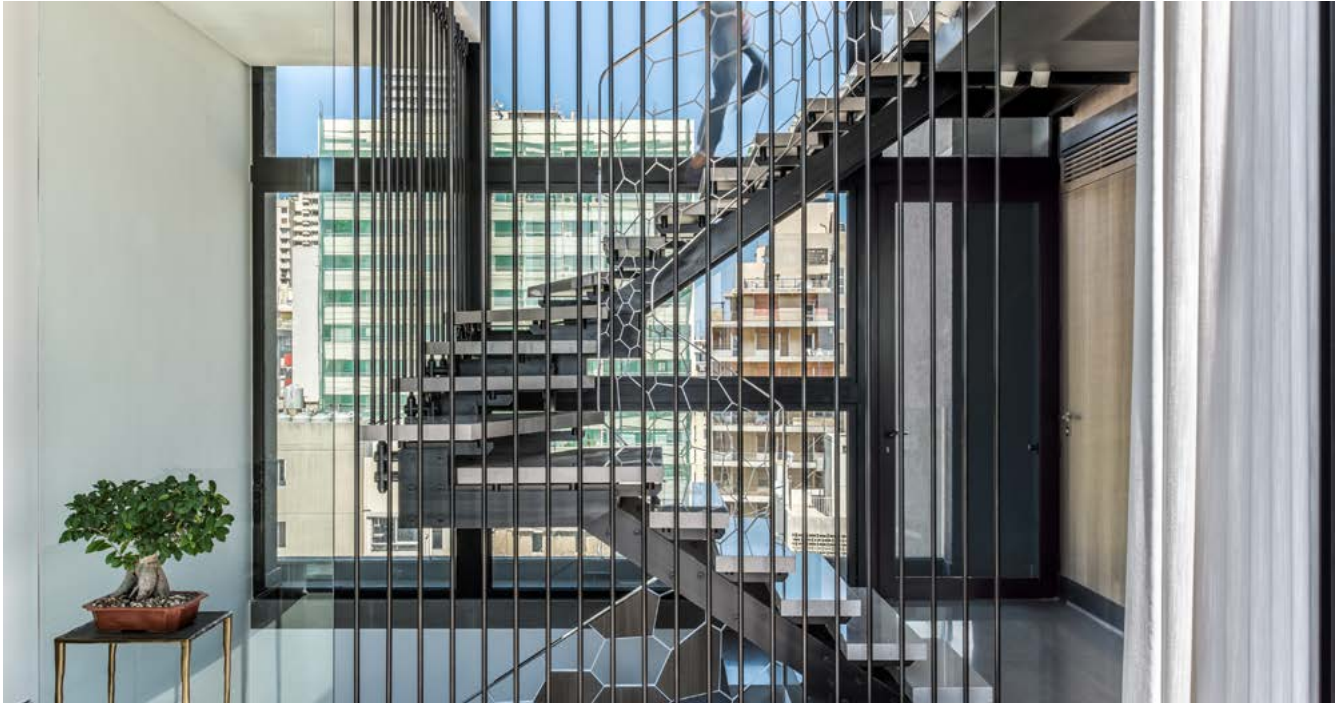


## CAPITAL FIREPLACES

LEADING SUPPLIER OF LUXURY FIREPLACES

[www.capitalfireplaces.co.uk](http://www.capitalfireplaces.co.uk)





# ASKDECO INFUSES LIGHT INTO THE PARIS OF THE MIDDLE EAST

With a global portfolio of completed projects including luxurious homes, private yachts and commercial environments, Askdeco, a full-service design firm based in Lebanon, is proud to showcase its Mallorca residential project in the heart of Beirut.

Located in one of Beirut's most vibrant districts, Ashrafieh, Mallorca is a multi-level bachelor penthouse apartment that epitomizes the resurgent vibe of a city home to world-renowned fashion designers, art galleries, performing arts venues and trendy bistros and cafés.

"Mallorca is situated in a new building in Ashrafieh, a district known for its lively streets during the 1960s," explains Nisrine Nasr, co-founder and interior designer at Askdeco. "For this project, we converted a small studio into a three-level penthouse, providing a very modern and efficient living space overlooking a historic district."

## Let there be light

Mallorca features 200m<sup>2</sup> of well-lit space, with modern lines and a very contemporary décor. Designed in spontaneous flow, the layout reflects functionality tailored to the client's lifestyle needs. From the onset, the client felt that the space might prove restrictive in terms of the functions and comfort he was seeking. However, in meeting with Askdeco, the designers addressed all aspects of functionality and the client proved very receptive to their proposal of opening up the space.

"We were able to analyze the client's requirements accurately and we responded with functional and creative solutions that addressed them," says Nasr. "A design concept can sometimes be difficult for a client to visualize, but seeing it all worked out on paper can bring a design scheme into focus and help the client to understand the direction that you are taking them in."

Askdeco's focus turned to creating a more open and light-filled space, which required architectural alterations to expand the size of its windows. They added floor-to-ceiling windows that increased light, offer 360° views overlooking the lively streets below and create a sense of more space. At the core of Mallorca's design is the intricacy of its winding staircase, a transitional space connecting all three levels of the panoramic penthouse. Its sculpted design and mutating mesh mirror handrail finish add artistic purpose to its functionality, creating a multi-dimensional centerpiece that blends outward with Mallorca's panoramic spaces. Set between two fully-glazed partitions, the staircase provides a sky-high illusion that further enhances the openness of the space. Askdeco also endeavored to reposition existing windows and doors to ensure greater sunlight exposure, while creative acoustics and lighting deliver a Zen ambiance that the client wholeheartedly embraced.



### Mallorca's inner beauty

Once Mallorca's frame was opened up, the process began to design the spaces within the space, including stylings relating to colours and textures. Working closely with the client, Askdeco developed a mood board which helped the client to visualize colour themes and design goals that complemented his layout plans.

The result focused on neutral colors for Mallorca that blur the lines between its inner and outer beauty, incorporating Mediterranean grey-white marble walls and mute grey wood into an extroverted space that blends with its surroundings.

Adhering to the client's plans, Askdeco also developed a masculine scheme featuring an abundance of metal finishes, while infusing some unique design elements in the master bedroom. Following the client's lead, they installed a multipurpose sink with storage space right at the entrance, and a walk-in closet connecting the washroom with the bedroom.

"The clients always have something in mind, and our job is to work with them step-by-step to tie it all together," explains Nasr. "If something they envision detracts from a space or decreases its volume, we try our best to change their minds with some innovative alternatives."





### Contemporary comfort

Entering Mallorca, the main floor includes a reception area and a well-lit kitchen.

The reception area leads out to a small adjoining terrace, which the client considered to be unusable outdoor space. In response, Askdeco repurposed the space as a visual stimulant, adding trees that enhance the beauty of the client's external views.

Mallorca's middle level features a dining area and living room, where artwork by Ramon Aular frames the Mediterranean furnishings of designers such as Maxalto and Fornasetti.

Master and guest bedrooms on the upper floor complete the space, with functional sub-spaces, including a contemporary vanity

area furnished with Magis chair and Ciatti side table that features panoramic views of the city.

Imparting their detailed knowledge of ergonomics, spatial planning and creative arts, Askdeco provided the client with all of the necessary tools for ensuring an excellent design.

Mallorca demonstrates an effective use of space that addresses the client's well-being and functional requirements, while wrapping that comfort in elements of contemporary interior design.

**Photo credit: Alex Jeffries**

**[www.alexjeffriesphotographygroup.com](http://www.alexjeffriesphotographygroup.com)**

**[askdeco.com](http://askdeco.com)**





# Custom Carpet Company

The Brickworks, Lynwick Street, Rudgwick, Horsham, West Sussex RH12 3DH

Tel: +44 (0) 1737 830301

Email: [info@customcarpetcompany.co.uk](mailto:info@customcarpetcompany.co.uk) Web: [www.customcarpetcompany.co.uk](http://www.customcarpetcompany.co.uk)



[www.customcarpetcompany.co.uk](http://www.customcarpetcompany.co.uk)



Traditional and contemporary  
Handtufted, Passmachine and Woven  
custom designed carpets and rugs  
from design to installation



# Designer floor or design flaw?

You plan. You design. You install. You worry about every little detail to make sure it's perfect. Now you can protect your investment in flooring and furniture with cost-effective ideas from solutions specialist Stroolmount.

Having peace of mind that your assets are truly protected pays dividends says Stroolmount's Gill Finch: "We save architects, designers and refurbishers thousands in costly repairs, replacements and insurance claims with simple protection solutions costing as little as 1p".

As well as innovating to solve customer problems, Stroolmount is a one-stop solutions shop for all these and more:

Short and long term solutions available. Available in bulk for manufacturers, POS retail with own branding also available.

**Furni-Glides:** Made with Teflon -Self-adhesive or screw into very heavy furniture so it slides easily across carpet or hard surfaces.

**Quickclick glides:** Multi-award-winning long-term solution. Its click-in interchangeable and replacement base glides help protect wood, laminate, vinyl, carpet and tiled floors.

**Self-adhesive felts:** Short-term high quality anti-scratch solution to cushion floors from heavy furniture with the added bonus of a strong adhesive.

**Move it pads:** Temporary solution so anyone can easily glide heavy furniture across hard floors and carpet like magic. **Watch our video** online to see how easy it is.





0330 660 1120

**EASY BATHROOMS**  
SIMPLY LUXURIOUS

easybathrooms.com

## EASY BATHROOMS INTRODUCES RANGE OF STUD-DETAILED ACRYLIC BATHS

Easy Bathrooms has introduced a range of four, stud-detailed acrylic baths, which offer a show-stopping feature for any space; ideal for inspiring clients to go for a statement freestanding bath.

The range includes the double-ended Glendale available in both matte grey and matte black; which provides a comfortable bathe at either end; or sumptuous space for two to soak. Alternatively, the Hoff is also available in matte grey or matte black; with a luxurious slipper-inspired style.

Commenting on the range, Lee Reed, product manager at Easy Bathrooms said: "These products make an impact on customers as soon as they walk into a showroom and tap into consumer demand, for a chic, statement option."

Both options are 1676mm in width, and are perfectly-suited to Easy Bathrooms' range of freestanding bath taps.

With trendy stud-detailing, the Glendale and Hoff options are both ideal for either a contemporary or traditional setting. But it's not a case of style versus substance, because the 5mm double-skinned acrylic material enhances the strength of the bath – and come with 25-year warranties.

The Glendale and Hoff baths are now available. Any retailers interested in stocking Easy Bathrooms products should contact Rob Holroyd for more information or for the latest SS19 brochure:

**sales@easybathrooms.com**  
**0113 451 0555**



# Alexander Joseph Luxury Cordless Lamps

Custom made luxury cordless lamps for elegant homes.  
Commissions most welcome.

[www.alexanderjoseph.co.uk](http://www.alexanderjoseph.co.uk)  
Telephone +44 (0) 1202 863600

## ALEXANDER JOSEPH

Ever wished you could buy a lamp without an unsightly cord & plug? Tired of hiding cables under carpets or rugs? Well now you can. British company Alexander Joseph have launched a range of beautiful table lamps. The patent pending technologies create the world's first luxury cordless lamps, which Interior Design Magazine describe as the only viable alternative to lamps with cords.

Everything is made by hand by Alexander Joseph craftsmen in their artisan workshops in Dorset. The company are proud to claim their products are 100% British made. In addition to the permanent range on their website [www.alexanderjoseph.co.uk](http://www.alexanderjoseph.co.uk) the company make spectacular on-off pieces, and accept customer commissions.

Vortex is the latest one-off creation. The inspiration for the piece came from a mundane task. Steve Burns, Technical director at Alexander Joseph was draining an oil bath when he noticed the vortex as the oil drained

from the bottom, with light streaming through a window the vortex was changing colour from deep chocolate to amber. Pretty soon the inevitable happened and the design team sketched out a lamp design.

The glass body is 25mm thick and sits upon a silver coloured plinth which houses battery technology and circuitry. As with all Alexander Joseph lamps, users can expect at least 52 hours of continuous use before the lamp needs recharging. Put another way, 3-4 weeks of evening use.

A bespoke sixteen-inch drum shade in silver crepe satin silk lovingly rolled around a hand-crafted frame finishes this luxury cordless lamp.

Vortex is supplied with a certificate of authenticity, for dimensions and technical information visit the alexander Joseph website.

[www.alexanderjoseph.co.uk](http://www.alexanderjoseph.co.uk)





*New one-off lamp Vortex*









*Amber Windsor*



 ESCO FLOORING *Collection* 

### CREATE A TRULY BESPOKE FLOOR

Every Esco solid and multi-layer wooden floor is made from European oak and factory finished with Osmo Polyx®-Oil. Choose from a huge colour range and combine it with different surface styles. Be creative! The result is a floor that you can create to meet your own unique requirements.

 <b>CHATEAU</b> Smooth surface.	 <b>KOLONIAL</b> Brushed surface.	 <b>HARFA VINTAGE</b> Brushed and cross-sawn.
 <b>ELGRIM</b> Distressed, old style.	 <b>SOFT TONE</b> Slightly brushed and grey stained.	 <b>KAREL IV.</b> Unique, handmade to appear 300 years old.

01296 481220  
[www.osmouk.com](http://www.osmouk.com)



We are experts in restoring old, and fitting new, floors.  
... and are preferred fitters for two of London's biggest hardwood floor suppliers.

Call us on **020 3793 8915** for a **FREE** survey and quotation.

 **HS WOOD FLOORING**  
Email: [office@hswoodflooring.co.uk](mailto:office@hswoodflooring.co.uk)  
[www.hswoodflooring.co.uk](http://www.hswoodflooring.co.uk) • [@hs\\_wood\\_flooring](https://www.instagram.com/hs_wood_flooring)



*Hand painted lights*

THE  
**SO  
HO**  
LIGHTING COMPANY®

shop now at [soholighting.com](http://soholighting.com)



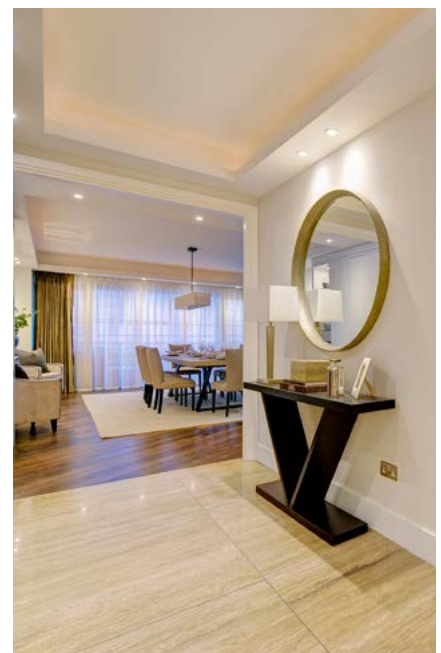
## WHEN TWO BECOME ONE – IMPRESSIVE LATERAL APARTMENT ON PARK LANE, WHICH WAS ONCE TWO, ON THE MARKET WITH HARRODS ESTATES

Luxury Estate Agent, Harrods Estates is offering a luxurious four-bedroom apartment which provides an impressive 2,812 sq. ft. for £11,700,000. Once two separate properties, a three-bedroom apartment and a one-bedroom apartment, this stylish home has been transformed by the previous owners into a generous and luxurious lateral residence which has been beautifully interior designed for the discerning individual.

Situated in desirable Mayfair, the apartment is set along the central London location of Park Lane. Once a simple country lane on the boundary of Hyde Park, the 18th century found aristocratic properties being built here. Park Lane grew in popularity in the 19th century after improvements were made to

Hyde Park Corner, and more affordable views of the royal park were provided. By the end of the 19th century Park Lane was flooded with mansions belonging to aristocrats and the wealthy. In the 20th century, this soon changed – the mansions and residential buildings were demolished, making way for smart office buildings, banks and luxurious hotels, much like how it stands today.

Many notable names have resided along Park Lane, including Robert B. Sherman, composer of the musical Chitty Chitty Bang Bang, as well as one of Hollywood's 'Golden Age' legends Douglas Fairbank Jr. His four-bedroom party flat was noted as one of London's most expensive rentals last year.





Park Lane is also renowned for being an iconic location in many films and novels over the years, including Sherlock Holmes in the early 1900s with Sir Arthur Conan Doyle's 'The Adventure of the Empty House.' One of the most successful British directors in the 1920s – 1950s, Herbert Wilcox, also chose Park Lane as the setting for his British box office hit of 1948 'Spring in Park Lane.'

Robert Cox, Sales Manager at Harrods Estates commented: "The extension of this apartment has really increased its desirability. The fact that this space was previously two separate apartments is what makes it unique. It presents an extremely rare opportunity to live in a generous and spacious lateral home in one of London's most popular and prestigious central locations."

The restored apartment can be found within a luxury building on Park Lane, opposite Hyde Park which provides a 24-hour on site

concierge and security service as well as the option for underground parking. Upon entry an elegant hallway leads to the four bedrooms, adjoining bathrooms and kitchen area. Continuing to follow the natural flow of the entrance hall, the spacious reception room opens out to an impressive 36ft. living and dining area, also leading to two private balconies.

The personal spaces include two master bedroom suites with accompanying dressing rooms, two large double bedrooms, one with an en-suite and shower room, and the other has the use of a family shower room and cloakroom. The entire apartment has been interior designed to a neutral colour palette, further accentuating the openness of the apartment and its rooms.

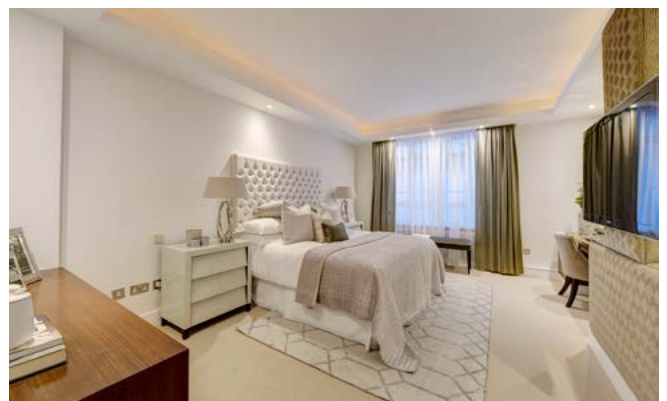
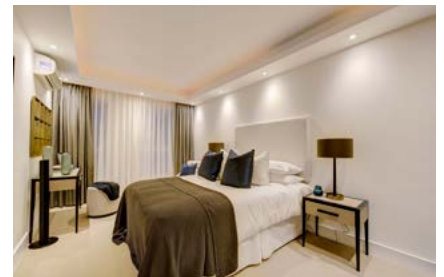
In addition to the living space, the apartment also offers a spacious amount of storage throughout.

Luxury additions to this apartment include air conditioning, an integrated speaker system, electric curtains, as well as an a custom Crestron System, the 'brains of the house', allowing for total control and monitoring of electrical systems by the home-owner.

Park Lane is the perfect central location, and the address benefits from being near a variety of luxury amenities.

These include some of Mayfair's Michelin-starred restaurants, as well as boutique shops on Mount Street and Hyde Park right on the doorstep, one of the finest royal parks in London.

**This property is on the market for £11,700,000 subject. For further information on this Park Lane apartment or other Mayfair properties, please contact Harrods Estates on 0207 409 9047 or visit [www.harrodsestates.com](http://www.harrodsestates.com)**





📞 0115 965 1937

**appliance city**  
expertise, delivered

★ Trustpilot  
★★★★★

## FISHER & PAYKEL

Fisher & Paykel design innovative products that transform the everyday into something out of the ordinary. Founded in the 1930's in New Zealand, Fisher & Paykel used their pioneering spirit and a culture of curiosity to develop high quality, practical products that challenge conventional design.

Creating significant innovations such as the DishDrawer™ and world-first ActiveSmart™ refrigeration technology has set them apart as a design-led appliance manufacturer.

At Appliance City we have stocked Fisher & Paykel appliances for almost twenty years. We are proud to be one of the UK's largest independent appliance retailers and have been established for over thirty years. We offer bespoke kitchen packages, providing the most competitive prices on multiple appliances that are tailored to your needs. Our staff are extremely knowledgeable and will go above and beyond to help you envisage your new kitchen. Rated as excellent on Trustpilot, we have over 10,000 reviews.



You can rely on us to provide you with the best delivery service possible. Our friendly delivery drivers ensure your new appliances are brought into your property with care, unpacking your items and taking away all of the packaging when they leave.

We have an impressive showroom full of all the latest products, including an array of stunning Fisher & Paykel appliances. Discover DishDrawers™, American style fridge freezers and built-in ovens plus much more.

Situated in Bunny, between Nottingham and Loughborough, customers visit our showroom from all over the UK to get unrivalled product advice, customer service and fantastic prices.

**Call our team of experts for help and advice on 0115 965 1937.**







## INVICTUS® - INVINCIBLE CARPET & FLOORING

### The established carpet brand Invictus® now brings you luxury vinyl flooring

Since its launch in 2015, Invictus® has been the ultimate reference in the UK market for comfortable broadloom carpet. With its dense pile, Invictus® carpet will make you prefer the carpet to the sofa. Associated Weavers, the makers of Invictus® carpet, now present Invictus® luxury vinyl flooring. With the same attention to quality, the same eye for exclusive designs, and a unique performance level, Invictus® luxury vinyl flooring is the perfect match to Invictus® carpet.

Associated Weavers stands out from the crowd as to UK-presence, branding and in-store solutions. The Invictus® luxury vinyl flooring concept and display are no exception to that rule. The attractive branding and visuals will be the highlight of any shop, immediately attracting the customer's attention. Associated Weavers has reinvented the in-store display and brings a tool with an intuitive digital module that is sure to

offer a great customer experience and guide customers through an efficient and fun-to-do purchase process. The symbiosis between traditional samples and digital journey is unseen in the flooring business.

When it comes to delivering a great performance, nothing beats Invictus® luxury vinyl flooring. The name is no coincidence: in Latin, "invictus" means "invincible". Invictus® luxury vinyl flooring is sure to meet all your expectations.

Invictus® luxury vinyl flooring brings a well-balanced collection of 84 SKU's: wood, stone and parquet designs in Dryback and Rigid Click. Whatever your decorating style, there's an Invictus® luxury vinyl floor for every home, from contemporary to country, from traditional townhouse to urban loft. Choose your preferred style and let it guide you towards the floor that is just right for you. For even more inspiration, use the Room Visualiser on [www.invictus.co.uk](http://www.invictus.co.uk).

### Associated Weavers – a UK brand since 1964

Associated Weavers has been present in the UK since 1964. Always a trailblazer, the company has been at the forefront of broadloom carpet's finest innovations.

Inspired by the tremendous success of Invictus® carpet, Associated Weavers proudly presents Invictus® luxury vinyl flooring.

From its headquarters in Halifax, Associated Weavers over the years has built strong and lasting relationships with its partners nationwide.

A passion for flooring, thorough product knowledge and an eye for great interior design are the strengths of Associated Weavers' 40-strong dedicated UK sales team.

**+ 44 1422 431100**

**[info@invictus.co.uk](mailto:info@invictus.co.uk)**



## THE ART OF SOUND

Welcome to the unique world of AudioArt, a new concept in beautifully sculpted pieces of art that undeniably deliver equal visual and audio pleasure.

Our amazing pieces are all one off and are designed personally to reflect your sense of style and individuality.

Audio Art transcends music the way haute couture transcends fashion.

We work exclusively with private clients in the UK and around the world taking personal commissions to bring you sound in an incredible art form that will enhance your home.

Our Design Director Paul offers a private consultation service in your home to match your style and needs with our stunning audio art.

**[www.audioarthifi.co.uk](http://www.audioarthifi.co.uk)**

Celebrate the art of sound

Our passion is amazing sound delivered through beauty; this is audio in its most exclusive and visually appealing form

Audio Art  
exquisite sound through art

[audioarthifi.co.uk](http://audioarthifi.co.uk)  
0208 9779996  
07545 484785  
[paul@audioarthifi.co.uk](mailto:paul@audioarthifi.co.uk)



## VICAIMA BRING AN ADDED DIMENSION TO WILLIAM MAY DEVELOPMENT

The village of Bramcote in Nottinghamshire, has been a popular place for home owners with discerning taste since Victorian times, so it's little wonder that is now attracting fresh interest for twenty first century living with the select Baxter Green development by William May. Envisioned by internationally recognised Leonard Design Architects and set in the former gardens of Grade II Listed St. Johns College, Baxter Green introduces outstanding low-density luxury housing surrounded by tranquil countryside. Once complete Baxter Green will have 40 residential properties varying in sizes from apartments to five-bedroom houses, with ample sized living space and all fitted with Vicaima quality interior doors.

Long established and regional house builder William May Developments have used Vicaima's Dekordor 3D finished doors throughout, alternating within particular house types, between a textured grey face with horizontal decorative grooves and a rich Dark Cedar finish.

Dekordor 3D adds a new dimension to interior design, with highly attractive horizontal grained textured laminates in a range of on-trend and contemporary colour tones. This durable range can be further enhanced, with the addition of glass panel doors, face grooving or even metallic inlays, to create individual statements for apartments or traditional homes.

All of the Dekordor 3D collection come in a choice of cores and can be supplied with added performance including fire doors which are compliant with the most rigorous fire door regulations, acoustics and security doors where required as part of a complete door and door frame kit.

**For further details about Dekordor 3D or one of the many other inspirational products from the Vicaima collections, visit the Vicaima website [www.vicaima.com](http://www.vicaima.com) alternatively, call 01793 532333 for additional information.**





## MONITOR AUDIO LAUNCHES NEW GOLD LOUDSPEAKER SERIES

Monitor Audio has melded the finest materials and decades of loudspeaker know-how to lovingly create their new Gold series of loudspeakers.

Rich in both tone and build quality, the speakers have been carefully crafted to last a lifetime.

Every detail of design has been refined to create an exquisite range of loudspeakers that bring a sense of luxury to any room.

Painstakingly assembled by Monitor Audio's team of craftsmen, each Gold speaker is beautifully finished to ensure that their combination of premium audio technology and class-leading build quality delivers a compelling hi-fi and home cinema listening experience.

The rounded vertical edges of the cabinets combined with the sharp profile of the horizontal lines give a classic and timeless appearance. A soft touch panel on the top of

the speakers (stand mount and floorstanding) adds a further sophisticated appeal to the Gold series. With a choice of ultra-smooth premium finishes (dark walnut or ebony real wood veneer and piano gloss black or satin white), the loudspeakers exude a graceful style wherever they are positioned.

For the first time, Gold features the technology used in Monitor Audio's flagship Platinum II loudspeakers.

The Platinum II drivers have been especially re-developed and honed for Gold and they are secured inside the well-damped cabinets using Monitor Audio's renowned single bolt mechanism to give a clean appearance.

With their stunning looks, premium feel and high-end sound, the Gold series offers a fulfilment for the senses. Their performance is articulate, clear, smooth and easy on the ear. Everything that one would expect from a Monitor Audio speaker.



**Gold Series**

The design improvements have created a considerably stronger performance when compared with the previous range. These improvements have allowed for a smaller number of models and there are now six different speakers – a single stand mount model, two floorstanders, single centre speaker, rear/FX speakers and subwoofer.



[monitoraudio.com](http://monitoraudio.com)

## *The difference is clear.*

In 1992 Demista revolutionized the bathroom mirror market by introducing a heated mirror pad which adhered to the back of the mirror to prevent condensation from forming on the glass.

The inconvenience and frustration of these foggy mirrors was therefore eliminated forever, giving you a clearly perfect steam free mirror without the need for time consuming wiping or costly cleaning products.

Demista has been proven and accepted nationally and internationally and through its unique reputation and unblemished track record has been the number one choice for specifiers of mirror defoggers for over 26 years.

Demista has been fitted in hotel developments globally and has become the industry standard.

With over 400 sizes now available, Demista can cover virtually any mirror in 230V, 120V, 24V, 12V, Demista can also make bespoke sizes if required.



[www.demista.co.uk](http://www.demista.co.uk)

# Granite & Marble UK Ltd

Granite & Marble UK Ltd is based near Central London. Our state of the art factory / showroom is located in Vauxhall and our showroom in Kingston upon Thames. We have been producing high quality stone products for our customers in the local community and surrounding area for over 20 years.

We specialise in producing made to measure worktops for kitchens and bathrooms, as well as other bespoke stone products. Our cheap granite countertops for kitchens and bathroom vanity units are very popular.



Call us: 02077938804 Email us: [sales@granitelondon.net](mailto:sales@granitelondon.net)

57 South Lambeth Road, SW8 1RH, London Photo Credit: Lizzie Barry

[www.granitelondon.net](http://www.granitelondon.net)



## TURN THE IPAD INTO THE FOCUS OF ANY ROOM

Viveroo's stunning range of wall and furniture mounts for the iPad enhance and complement this icon of design.

The distinctive sculptured range is hand-crafted from premium materials and has been created to blend perfectly with the iPad's form.

Each mount in the range offers different features that have been designed to provide improved visibility and functionality of the iPad in both domestic and commercial environments.

### LOOP

The world's first rotating iPad mount for flush installation.

The innovative rotating mechanism makes it possible to alternate between vertical and horizontal positions.

Available in Super Silver, Deep Black and Clear White.

### LOOP 360

A table-mounted version of the Loop allowing 360-degree rotation of the iPad. Perfect for retail and domestic environments. Available in Super Silver, Deep Black and Clear White.

### SQUARE

The design of the Square complements the form of the iPad and offers spectacular presence from any angle. Available in Super Silver, Deep Black and Clear White.

### FREE

This distinctive design appears to float in front of the wall. The contemporary asymmetrical lines are beautifully machined from billeted aluminium and create a sharp look in a modern room. Available in Super Silver and Dark Steel.

### FREE FLEX

Integrates the iPad into every environment. Features USB cable charging, a rotating joint head to allow landscape or portrait



orientation and custom tube length for the perfect lifestyle fit.

### FREE FLEX PEDESTAL

The pedestal base allows the Free to be moved from room to room. Features USB cable charging and a rotating joint head to allow landscape or portrait orientation.

### CUSTOMISATION

The entire range can be finished in any colour, and corporate branding can be added.

**PRICES START AT £375**

[www.red-line.co.uk/viveroo](http://www.red-line.co.uk/viveroo)



# Smart home, smart living

If you are renovating or building, why should you consider smart control...

## Smart home...

...gives you seamless control over your home, enabling you to connect lighting, heating, security, curtains, blinds, music or TV so that you achieve the perfect balance of comfort, convenience and fun!

## Smart lighting...

...provides smooth, silent dimming within a wide spectrum of light. Combine a variety of light fittings, dimmed to the perfect level - a great solution for open-plan living spaces where you undertake lots of different activities. Simply press a button and your lighting transforms the space for cooking, dining, relaxing and entertaining.

## Smart blinds...

...not only look good, but they protect your beloved home from the damaging effect of the sun and manage heat effectively. At the touch of a button, blinds descend to the right level and if you forget, just use your smart phone!

## Smart security...

...allows you to connect all your devices: cameras, alarm, door entry, lighting and blinds, giving a 'lived in look to your home' and enabling you to manage access when you are away. Create a geo-fence around your home, so you can detect would-be burglars and trigger the appropriate response to keep you and your home safe!

## Smart music & vision...

...allows you to listen and create the perfect ambiance in every room. Simply select your uplifting/relaxing music or your favourite film from one discreet solution!

## Smart networking...

...keeps you safely connected to your home, whether you are there or away!

**For more information contact Karen at Intelligent Abodes Ltd on 01392 823398 or email [karen@intelligentabodes.co.uk](mailto:karen@intelligentabodes.co.uk)**

# intelligent abodes

SMART HOMES • SMART LIVING • SMART SERVICE



Specialists in smart home control & interiors,  
including lighting, automated blinds, discreet multi-room  
audio, home cinemas and security.



[www.intelligentabodes.co.uk](http://www.intelligentabodes.co.uk)

01392 823398 • [karen@intelligentabodes.co.uk](mailto:karen@intelligentabodes.co.uk)



# CHERISHED GLOW

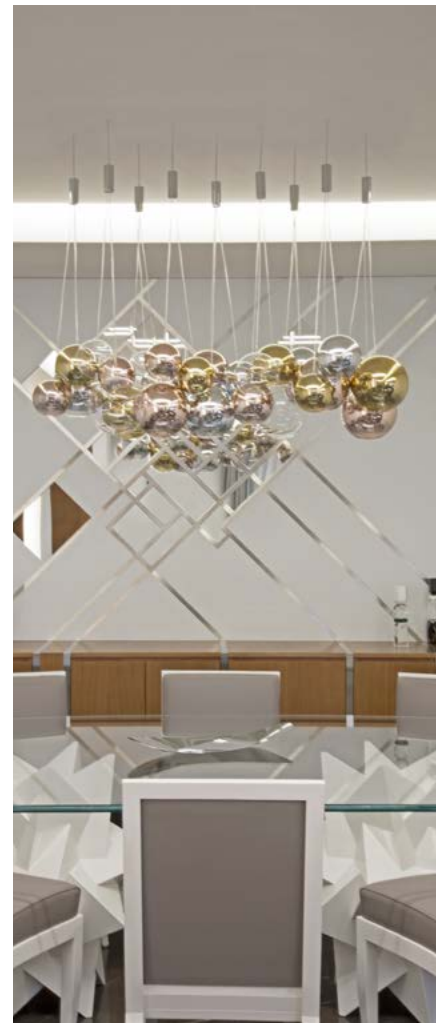
Wael Farran Studio unveils their latest project, Cherished Glow, a home for a family of four. Located in Beirut, in a serene residential area, the apartment was fully renovated to embrace the loving feel of the family home, with privacy and flexibility at the core of the accommodation.

And these begin from the entrance that includes a private elevator area where guests and inhabitants are greeted by two stylized calligraphy panels by artist Ghaleb Hawila. The black and white floating panels fitted with indirect lights create a welcoming effect as guests step towards the entrance doors, made of French oak croisé veneer integrated with silver leaf and white patina.

Modern elements of levelled lighting accentuate every corner of the space creating a warm welcoming feeling that every entrance should have.

The living area is a big open space, where all wall separations have been removed giving a sense of wideness and grandeur. However, to ensure privacy, electric mobile wood panels can close in on the family room for more intimate gatherings. The whole living space is fitted with custom made furniture crafted by seasoned local artisans using top of line fabrics from Romo, Pierre Frey, Mark Alexander, Dedar and Sahco Hesslein. The various shades of grey reflect the brightness of the natural lights as well as the indirect interior lights.

The dining room boasts Paperweight, a sculptural Formitable©, from the studio's custom-made line of limited edition tables. Complementing the dining table, is Ascension, a display and storage cabinet, also from the Formitable© line. The wall behind it is decorated with stainless steel stripes that, when combined with lighting, creating a unique effect.





The glow moves from the wall to the modern chandelier by Studio Italia that shines in gold, silver and brass colors.

Formitable© elements are not limited to the dining room, as Icing, a center table and Quadruple, a set of two center tables and two sides tables are spread in the living area as gathering points for happy exchanges among friends and family.

The family room is equipped with a big TV unit, also custom made featuring a clear and clean lines design.

The bright feel follows the guest to the restroom that was all made of Carrara white marble, including the accessories such as the special mirror that was made especially for the space.

Moving on to the kitchen, heart of the home, where white and wood remain kings, faithful to the space's general theme. The walls are made of Cava Bianco Statuario Venato marble wood glass, while the cabinets are executed with white wood glass, creating a clean and clear space for cooking and daily family meals.

The countertop is made of engineered marble that can take the challenge of any knife or lemon slice. The whole space is lit with a high-end lighting system of led profiles.

The hallway leading to the more intimate space that are the bedrooms reveals doors that disappear seemingly into the wall, blending perfectly with their surroundings. Stripes of led lights from the wall intersect with stripes in the ceiling for a luminous effect and function.

The master bedroom was also created with unique design details in the bed and its matching cupboard. The boy's room, a football fan, was fitted with a glass and stainless steel painted wall featuring nothing else then... a football on the fly. Finally, for the home's princess, the girl's room reveals special words telling the story of her birth and blessings. The kids share a bathroom that accommodates them both.

"I believe it is the attention to the details that turns a house into a home. For Cherished Glow we were highly attentive to the client's needs and taste which is what allowed us to work in the details that created the homey feeling. And of course the real "cherished glow" remains the glow on the client's face once we unveil the project," concludes Wael Farran, founder and lead designer of Wael Farran Studio.

**Photographer: Wael Khoury**

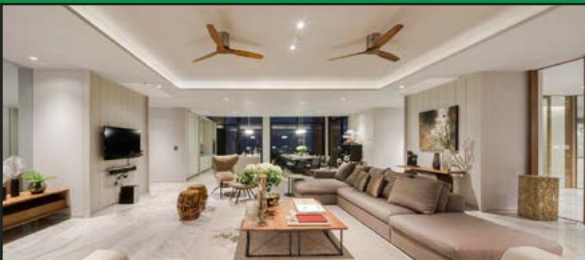
**[www.waelfarranstudio.com](http://www.waelfarranstudio.com)**



## Beautiful Designer Ceiling Fans



**Powerful - Stylish - Reliable - Silent**



**THE HENLEY FAN COMPANY LTD**



**01256 636 509**

**www.henleyfan.com**

## LISTED BUILDING CAN BREATHE AGAIN

After more than 60 years as a school Grade II Listed Moreton House in Bideford, north Devon, has been returned to family ownership.



Cement repairs and vinyl paints had caused a lot of damp to build up inside the walls.

highly breathable paint that covers exceptionally well and gives a distinctive, ultra matt finish.

In many places moisture was trapped behind the paint.

Internally, the walls are either lath and plaster or lime plastered stone.

Claypaint is virtually VOC free and does not give off any toxic emissions so it is safer for the health of building occupants as well as the environment. Its eco credentials include the stringent EU Ecolabel.

Earthborn's Claypaint was specified to prevent future damp problems by ensuring the internal walls can breathe.

Claypaint is available in Earthborn's signature palette of 72 shades.

Claypaint is a unique, clay based emulsion that maximises the natural properties of clay to create a high performance,

**www.earthbornpaints.co.uk**



**MAYFAIR  
FURNITURE**

[www.mayfairfurniture.co.uk](http://www.mayfairfurniture.co.uk)

[sales@mayfairfurniture.co.uk](mailto:sales@mayfairfurniture.co.uk)

**01733 310 115**

**Contract Furniture. In Stock. Immediate Dispatch. Next Day Delivery.**

**The Dorchester**

**£89.95**

MAY0047



**The Belmont Collection**

**from £42.50**



**The Windsor**

**£59.95**

MAY0041



**Commercial Table Tops, Wide Range of Sizes**



from

**£18.95**

MAY0242

Forest Oak



from

**£18.95**

MAY0250

Walnut



from

**£23.95**

MAY0245

Dark Oak



from

**£18.95**

MAY0240

Wenge

**Durable Cast Iron Table Bases**



**£29.95**

MAY0360

Samson B1



**£39.95**

MAY0420

Samson B4



**£42.50**

MAY0470

Step Square



**£47.50**

MAY0490

Step Rect

[www.mayfairfurniture.co.uk](http://www.mayfairfurniture.co.uk) | [sales@mayfairfurniture.co.uk](mailto:sales@mayfairfurniture.co.uk) | 01733 310 115 | 11 Royce Rd, Fengate, Peterborough, PE1 5YB

\*Bank holiday and geographic restrictions apply, see [mayfairfurniture.co.uk](http://mayfairfurniture.co.uk) for more info.



## A & W MOORE WINE RACKS

A & W Moore Wine Racks have been manufacturing wine racks in the UK since 1977. We are a family-run business, providing a comprehensive range of high quality wine racks and wine cabinet storage solutions.

We have built our reputation on building bespoke wine racks using only the finest materials, to not only provide you with bespoke storage solutions that are tailor-made to your requirements, but also to ensure that no matter the wood or metal you choose, your wine storage solution will preserve your wine or champagne for generations. Our reputation for quality products at affordable prices, combined with great personal service, means that we now have loyal clients from every corner of the globe, as well as across the United Kingdom.



Choose from our large collection of solid oak wine racks, solid pine wine racks, traditional wood & steel wine racks or all metal wine racks to find your perfect fit.

**For more information**  
**0115 9441434,**  
**information@wineracks.co.uk**  
**www.wineracks.co.uk**  
**www.instagram.com/awmwineracks** and  
**www.pinterest.co.uk/AWMWineRacksUK/pins/**



**WINE RACKS UK**  
By A & W MOORE

A & W MOORE Wine Racks manufacture the largest range of wine storage solutions in the UK. We produce tailor-made storage units for any space.

**Call Now for a Quote Tel: 01159441434**  
**information@wineracks.co.uk or visit wineracks.co.uk**

Wine Racks & Storage by Wineracks.co.uk

## HUTIG ... FURNITURE, FLOORING and JOINERY

'Inspired by the raw beauty of Sutherland' Hutig is a new brand of exceptional high quality furniture manufactured in Brora in the Highlands of Scotland.

We have been operating in the bespoke furniture market for more than 20 years. We have invested in the latest solid timber sawing technology which enables us to produce flat and textured surfaces of amazing quality and consistency.

Some of the immediate benefits are Natural grain textured finish, a Unique care in timber selection, Solid Build and Sustainability.



Besides our range of furniture we offer architectural and joinery items. Hutig Flooring is the first engineered flooring manufacturer in the Highlands of Scotland. We can offer combinations of flooring, doors & architraves, skirting, wall panelling and furniture. This way we offer our customer more control over complete interior fit out; all made using the same process, all made with consistency of quality guarantee

For more information about Hutig Furniture and Flooring, please visit our website [www.hutig.com](http://www.hutig.com) and follow us on Facebook and Instagram @hutigfurniture.

**https://hutig.com**  
**@hutigfurniture**  
**E: Info@hutig.com**  
**T: 07818 205077**

**THE MASTERS OF MODERN FURNITURE**  
**INSPIRED BY THE RAW BEAUTY OF SUTHERLAND**

**HIGH QUALITY SUSTAINABLE FURNITURE**

# THE SOAK

Decorative specialists Armourcoat have provided the finishing touches to The Soak, a new bar and restaurant next to London's Victoria Station with an all-day menu that is built around signature soaked flavours through fermenting, pickling, brining and steeping techniques.

With interior design devised by a partnership between creative agency CAB and interior design studio MAS, the grade II listed building retains many original features including a carved leaf design which is now incorporated into the bar interior. Armourcoat's Koncrete polished plaster finish is used to great effect on the bar front with recessed logo. Koncrete is an urban range of polished plaster colours and finishes designed for contemporary projects.

The range offers a wealth of design options to achieve a distinctive modern look including distressed effects or recessed 'shutter' markings.

Outside the building, Armourcoat PPX has been used to repeat the restaurant logo design. PPX is a low maintenance, durable external limestone render system that can create stunning honed and textured stone like finishes for both new build and renovation projects.

Glh Design Team says, "The look and feel for The Soak has been designed to encompass the building's period features and emphasise the incredible space we have available in this unique venue, and the delicate leaf interior design that has been used throughout is reflective of the beautifully carved foliage on the building's Victorian heritage. The space includes four distinct 'zones', which enables guests to flow throughout different areas of the venue seamlessly, from day to night, from breakfast to cocktails. We were delighted to work with Armourcoat on this project, and the use of polished plaster finishes to the entrance wall and bar front adds a modern twist to the design.



The team at Armourcoat have enabled us to make an entrance with an impact and the rough textured finish on The Soak logo is such an impressive contrast to the smooth concrete of the finish on the wall."

Photography: © Franklin & Franklin

[www.armourcoat.com](http://www.armourcoat.com)

## RADOX RADIATORS

Our popular Quartz Mirrored Radiators are now available in so many new colours...

Sunburst, Pearl Green, Blue Sapphire, Yellow and Rose Gold just to name a few...

These radiant New Mirror colour shades are the perfect addition to bring colour and warmth to a favourite room in your home.

Radox Quartz Range: so much more than just a Radiator...

[www.facebook.com/RadoxRadiators/](https://www.facebook.com/RadoxRadiators/)  
[info@radoxradiators.com](mailto:info@radoxradiators.com) +44 (0) 1225 782 819

[www.radoxradiators.com](http://www.radoxradiators.com)





1

## Hamilton Weston

Hamilton Weston's unique archive includes an original and beautiful selection of large medium and small wallpaper designs dating from c.1690 through to the mid 20th century.

Each design is meticulously re-drawn and brought to life again from the original faded document, then hand or digitally printed using either the vintage or a more contemporary colour palette.

Clients' bespoke designs and colourings are our speciality.

Contact: Hamilton Weston Wallpapers Ltd. T. +44 (0) 20 8940 4850 m. 07973 429568

**Website:** [www.hamiltonweston.com](http://www.hamiltonweston.com) | **Email:** [info@hamiltonweston.com](mailto:info@hamiltonweston.com)



*Archway House c. 1800*



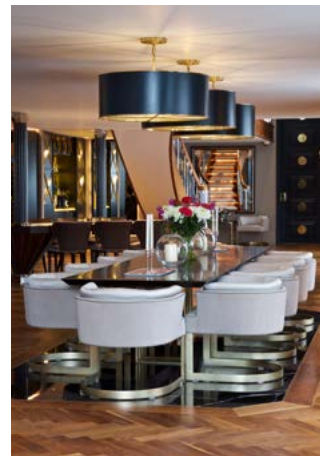
*Swakeleys Chinoiserie circa 1750*

2

## Luxury City Penthouse

The client for this city penthouse wanted a home which was both luxurious and timeless as well as bold and dramatic. It was imperative that all the elements married together and the transition from room to room was to be seamless. This formal dining area takes a bold stand by setting a dramatic but highly luxurious marble stage for the dining experience, with beautiful brass details and golden lighting showcasing the woods and curves that flow around the space. Cochrane Design endeavors to create design excellence in all its projects, whilst maintaining a strong client relationship throughout so that the client can receive the finest work that is tailored to their needs. For further inspirational images and design concepts, please see our website that hosts all of our recent projects.

**Telephone:** 0207 751 0075 | **Email:** [info@cochranedesign.com](mailto:info@cochranedesign.com)



3

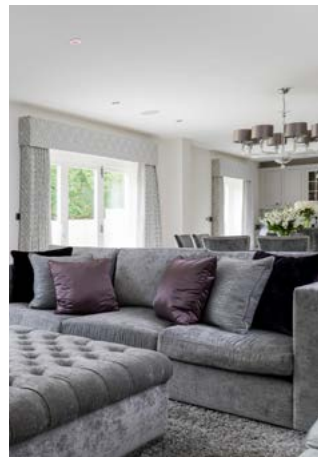
## AG Interiors

At AG Interiors we specialize in visually distinctive, welcoming interiors designed uniquely around you.

Applying our extensive experience in fashion and creative design, we explore colour, texture, form and style, interpreting your brief to create entirely original interiors, which are expressive, tactile, sensual, memorable, uplifting and ultimately practical. From the simple to the spectacular, our bespoke interiors add a unique and very personal signature, creating a sense of space and comfort that works for the people who live there – space for living, laughing, eating and working.

“ Have nothing in your house that you do not know to be useful or believe to be beautiful “ William Morris

**Website:** [www.ag-interiors.co.uk](http://www.ag-interiors.co.uk) | **Telephone:** 07868 636222



4

## Stacked Door knobs from Turnstyle Designs

Responding to demand from its customers Turnstyle Designs is excited to announce the re-introduction of door knobs into their family of products. There are four distinct designs available, Banded Egg, Layer, Saturn and Stacked. The new designs are a clever fusion of classic product with a completely original contemporary twist, cleverly incorporating Turnstyle's trademark mix of materials and finishes.

Stacked, shown here is designed by Christina Roberts and available in four of the bestselling Amalfine designs (Wire, Facetted, Shagreen and Barrel) as well as leather and solid brass. Bold designs stacked between two slim layers of brass and set on a contemporary rose to create this luxurious door knob range. Co-ordinating cabinet knobs, pulls, door and window levers are also available in all designs.

**Website:** [www.turnstyledesigns.com](http://www.turnstyledesigns.com) | **Telephone:** +44 (0)1271 325325



5

## Making Interiors smell as good as they look

Have you ever entered a space and instantly felt at home, or quite the opposite, uncomfortable or anxious?

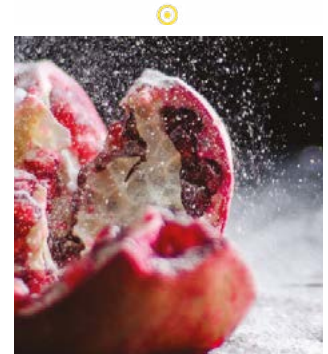
The reason why is not always an evidence, be it the colours, the lighting, the furniture or perish the thought... the SMELL! A badly aligned interior may have you longing for more or running for the door.

Aromatise Fragrance Diffusion Technology believe in the art of aligning those senses, with the help of the often-forgotten sense of smell. With premium perfumes and state of the art fragrance diffusion technology, we will assist you in designing the olfactive completion of any living space.

Do call us and speak to us personally for an easy first consultation or visit us on our website.

**Website:** [www.aromatise.co.uk](http://www.aromatise.co.uk) | **Telephone:** 01223 894207 | **Email:** [info@aromatise.co.uk](mailto:info@aromatise.co.uk)

**AROMATISE**  
Fragrance and Technology



6

## Stainless Steel Worktops

GEC Anderson specialise in custom made stainless steel worktops, in any shape or size, including irregular forms, L-shapes and extra long surfaces. Choose from a wide range of sink sizes that are seamlessly integrated within worktops, in any position and combination. Cutouts for appliances and taps are provided, as required. A choice of edge profiles is available, including lipped and plain edges as well as integral upstands. Top quality brushed satin stainless steel provides a beautiful, long lasting, hygienic and safe work surface, suitable for commercial, residential and public applications. GEC Anderson also supply a coordinated range of stainless steel cabinets, shelving, doors, panels and splashbacks. A full templating and installation service is also available.

**Website:** [www.gecanderson.co.uk](http://www.gecanderson.co.uk) | **Telephone:** +44 (0)1442 826999 | **Email:** [info@gecanderson.co.uk](mailto:info@gecanderson.co.uk)

**GEC ANDERSON**  
the stainless steel specialists



7

## Just Artificial - Artificial Plants, Trees & Flowers

Established in 2004, we have many years experience as one of the UK's leading suppliers of high quality artificial plants, trees, silk flowers and related accessories, which we offer at competitive prices.

We have a range of fantastic options which will set your space apart from the rest, allowing you to create an indoor Eden.

Our products are highly realistic, durable, and designed with particular care and attention by our master craftsmen, all of whom are experts in their field.

*UK, International and Worldwide delivery available.*

**Website:** [www.justartificial.co.uk](http://www.justartificial.co.uk) | **Telephone:** 01524 858888



8

## Complete colour coordination from Abacus

Abacus Bathrooms has developed a unique portfolio of stunning brassware and accessories so that retailers and designers can offer a completely colour matched scheme in the bathroom. With colour taking a subtle centre stage in bathrooms today, Abacus has introduced four stylish contemporary finishes – chrome, bronze, nickel and black – which will be available across three popular brassware ranges as well as accessories such as towel rails, wetroom glass, valves and traps.

For Abacus customers, the ordering of these new products is via the dealer log-in portal which is accessed with one click from the [www.abacus-bathrooms.co.uk](http://www.abacus-bathrooms.co.uk) home page with personalised log-in details.

**Website:** [www.abacus-bathrooms.co.uk](http://www.abacus-bathrooms.co.uk) | **Telephone:** +44 (0) 345 850 50 40





9

## LAMPUK & Targetti Lighting

Our partner Targetti has been designing and producing indoor and outdoor architectural light fixtures since 1928. LAMPUK work with the aim of contributing to the quality of every project with Targetti products. LAMPUK style is our ability to interpret light intelligently and passionately. We place great importance on innovation and research, using the unique ability of light to excite and inspire.

Targetti product expresses the values LAMPUK hold dear. Perfect light control, excellent performance and, extreme attention to aesthetic details. We cater to designers to provide flexible solutions that can meet even the most complex aesthetic and functional needs. We are a trusted partner: the skills and experience we have gained, together with our extensive international presence make it possible for us to provide fast and accurate solutions.

**Website:** [www.lampuk.co.uk](http://www.lampuk.co.uk) | **Telephone:** 01785 811222



10

## Unique Feature Walls

Love Maps On is the UK's leading supplier of map wallpapers and wall-art to consumers and businesses.

Our Ordnance Survey Mapping and Vintage Ordnance Survey Mapping can be centred on any GB postcode and can be produced on made-to-measure wallpapers, canvases, ceramic tiles, glass splash-backs and framed prints.

Our dedicated mapping experts are on-hand to offer guidance and advice ensuring that every map is created exactly to customer specifications.

**Website:** [www.lovemapson.com](http://www.lovemapson.com) | **Telephone:** 01344 427647



11

## Contemporary Wood-Burning Stoves For Cooking And Heating

ESSE has been at the forefront of heating and cooking innovation since 1854. We've been building beautifully engineered wood-fired cooking stoves for more than 160 years. New models like the Warmheart and the Bakeheart embody everything we know about cooking and heating. And while the timeless design and rugged styling hold true to ESSE's rich heritage, our clean-burning stoves incorporate state-of-the-art engineering. These Ecodesign Ready stoves are clean enough to burn in a smoke control zone and are equally at home in a remote 'off-grid' setting miles from mains gas or electricity.

Encapsulating more than a century and a half of know-how and hand-built with pride in Britain, our iconic range of wood-fired cook stoves are the very essence of ESSE.

**Website:** [www.esse.com](http://www.esse.com) | **Telephone:** 01282 813235



# DALLMER

12

## Dallmer unveils its new Individual shower channel

The demand for level-access showers is growing, Dallmer has responded to this by adding new flush-in-floor shower channels to its DallFlex system, meaning it now offers a total of more than 100 combination options, bringing the number of Dallmer shower channels that can be combined with a single drain body to an impressive nine! CeraFloor Individual is the elegant shower channel for flush-in-floor installation that boasts outstanding design and leading-edge technology. The shower channel comes in a length of 1500mm and can be shortened to suit the specific shower area. The cover of the CeraFloor Individual can be individually tiled enabling it to blend harmoniously with the bathroom landscape. As well as the tileable version, it is also available in stainless steel and with a matt PVD coating in the colours anthracite, red-gold and brass.

**Website:** [www.dallmer.com](http://www.dallmer.com) | **Telephone:** 01787 248244



13

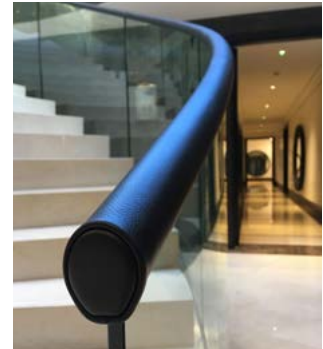
### The Luxury of a Leather Handrail ...

At Hide and Stitch our craftsmen will transform your once overlooked handrail into a much admired and distinctive interior feature. We work on all sizes and styles of staircase: From elaborately designed handrails that run continuously over several floors, to shorter styles, over just a few metres. In addition to fitting the leather, we can also supply a wide selection of leather samples: From full aniline and pigmented grains, to embossed designs from a variety of leading leather suppliers.

As well as working with existing handrails, we can also manufacture and fit new handrails covered in your choice of leather. Why not make a leather handrail part of your next project. Visit our website for some inspiration.

**Website:** [www.hideandstitch.co.uk](http://www.hideandstitch.co.uk) | **Telephone:** 01223 233437 | **Email:** [info@hideandstitch.co.uk](mailto:info@hideandstitch.co.uk)

hideandstitch 



14

### New additions to Landmark Collection

UK manufacturer Samuel Heath's Bauhaus-influenced Landmark collection of bathroom taps, showers and accessories has enabled architects and designers to achieve a totally co-ordinated finish for the industrial interiors theme. Landmark is now further enhanced by additions to single lever taps for both basin and bath, including a 2-hole basin mixer with pop-up waste, which is available in low, medium and high spout heights and, for the first time, the collection will feature wall-mounted plates for taps. These include a number of new product designs, such as the wall-mounted basin mixer which is available in three spout lengths and in left and right-hand variants. Landmark and other Samuel Heath bathroom collections, plus its door and window fittings, can be viewed at the company's showroom at Design Centre Chelsea Harbour.

**Website:** [www.samuel-heath.co.uk](http://www.samuel-heath.co.uk) | **Telephone:** 0121 766 4200



15

### Classic creativity from Keller Kitchens

New from Keller is the classic GL5100 model. The elegant design pictured makes use of classic green hues combined beautifully with chic golden handle trims and a melamine fronted kitchen island in Walnut for a warm wooden touch.

Perfect for homeowners who like flexibility, this kitchen lends itself to creativity. With a range of stylish shades available from the Master and Trend collections, along with 1,950 NCS colours, and a variety of lacquer finishes from structured to silk gloss and high-gloss, a kitchen can be created for any interior design scheme. The metallic handle trims in this kitchen design are available in gold, bronze, copper, titan and gun metal, giving homeowners the opportunity to add a personal touch to a classic kitchen.

**Website:** [www.kellerkitchens.com](http://www.kellerkitchens.com)



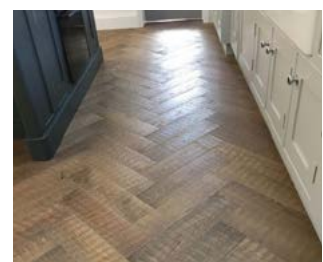
16

### High Quality European sourced wood flooring and fitted expertly by Criterion flooring

Criterion Flooring is a family run company, which has specialised in wood flooring for over 25 years.

Owner Neil Smith has a real passion for wood, he loves the natural warmth of Oak, Walnut and Birch, the style it brings to a home and believes fervently in the health benefits, which make it an excellent choice for families. Criterion supply solid wood, engineered wood and laminates across Hertfordshire, Buckinghamshire, Bedfordshire, Oxfordshire and North London, fitting high quality European wood from its Bordeaux range of flooring.

**Website:** [www.criterionflooring.co.uk](http://www.criterionflooring.co.uk) | **Telephone:** +447850752219





17

## Sustainable Wooden Toy Car Production

Many children have mountains of plastics toys stacking up environmental problems for years to come. Wooden toys can last for generations and do not present a disposal problem. Toys for boys yes, but these depictions of heritage vehicles are more than toys they are art and rare home décor pieces. Handmade in our Wolverhampton workshop each classic car is individual. Check out our website for over 24 models that can be purchased straight away or commission any number to be manufactured for you. We specialise in a superb oil & wax finish and have expertise in non-fading pigments for the British Racing Green or Italian Racing Red and we use a secret blend of vinegars to ebonize our oak models to achieve a unique black finish. I made these for kids but found parents using them around the house for decoration.

**Website:** [www.newsgripper.com](http://www.newsgripper.com) | **Telephone:** 01902 307700

## NEWSGRIPPER



18

## The star behind the counter! The ARTEMIS MIXER!

How many of you know what a drink mixer is? How many of you have seen or used a drink mixer?

Although, drink mixer is mainly connected to coffee shops, can you imagine your everyday life like a movie? You wake up, you have breakfast, you go to work, you spend time with family and friends, and you go on vacation. All these aspects of life are somehow connected to a drink mixer. And nowadays we need more than a simple machine to mix our beverages. We firstly need quality, innovation, duration, style, design and the sense of satisfaction that, this is exactly what offers us the solution we need.

So drink mixer is the star behind the counter as far as it keeps up with our lives.

**Website:** [www.artemis-mixer.gr](http://www.artemis-mixer.gr) | **Telephone:** 0030.2399020070



38

www.artemis-mixer.com

ARTEMIS  
DESIGN SPECIALISTS

19

## LIND DNA

LIND DNA is a Danish design company founded in 2013 by entrepreneur designer Preben Lind. The bedrock of most of their designs is high-quality recycled leather sourced from surplus production of furniture, bags and shoes. The vegetable-tanned leather is first washed and granulated and then pressed together with natural rubber from trees. The resulting quality consists of 80% real leather and 20% natural rubber.

LIND DNA designs are developed in-house and all steps in the process are being followed very closely – from initial idea, to production and final shipment to customers. The aim is to create subtle designs with zero waste, in a form that involves reusing resources to decrease the total environmental impact.

**Website:** [www.linddna.com](http://www.linddna.com) | **Telephone:** +453 112 2926



20

## Lyndon bows to its heritage with new Maysa seating collection

Maysa is the latest soft seating collection from Lyndon and presents a distinguished modular solution that combines contemporary design with handcrafted engineering, ergonomic comfort and exquisite upholstery.

Maysa fulfils the brief for a modern and flexible deep-seated collection that is able to satisfy a number of spaces. However, it is Maysa's upholstery and fine attention to detail that takes this seating to a whole new level; making it a must-have in high-end corporate and hospitality venues.

With modular options also available, Maysa can be customized to suit a variety of settings.

**Website:** [www.lyndon.co.uk](http://www.lyndon.co.uk) | **Telephone:** 01242 584897

