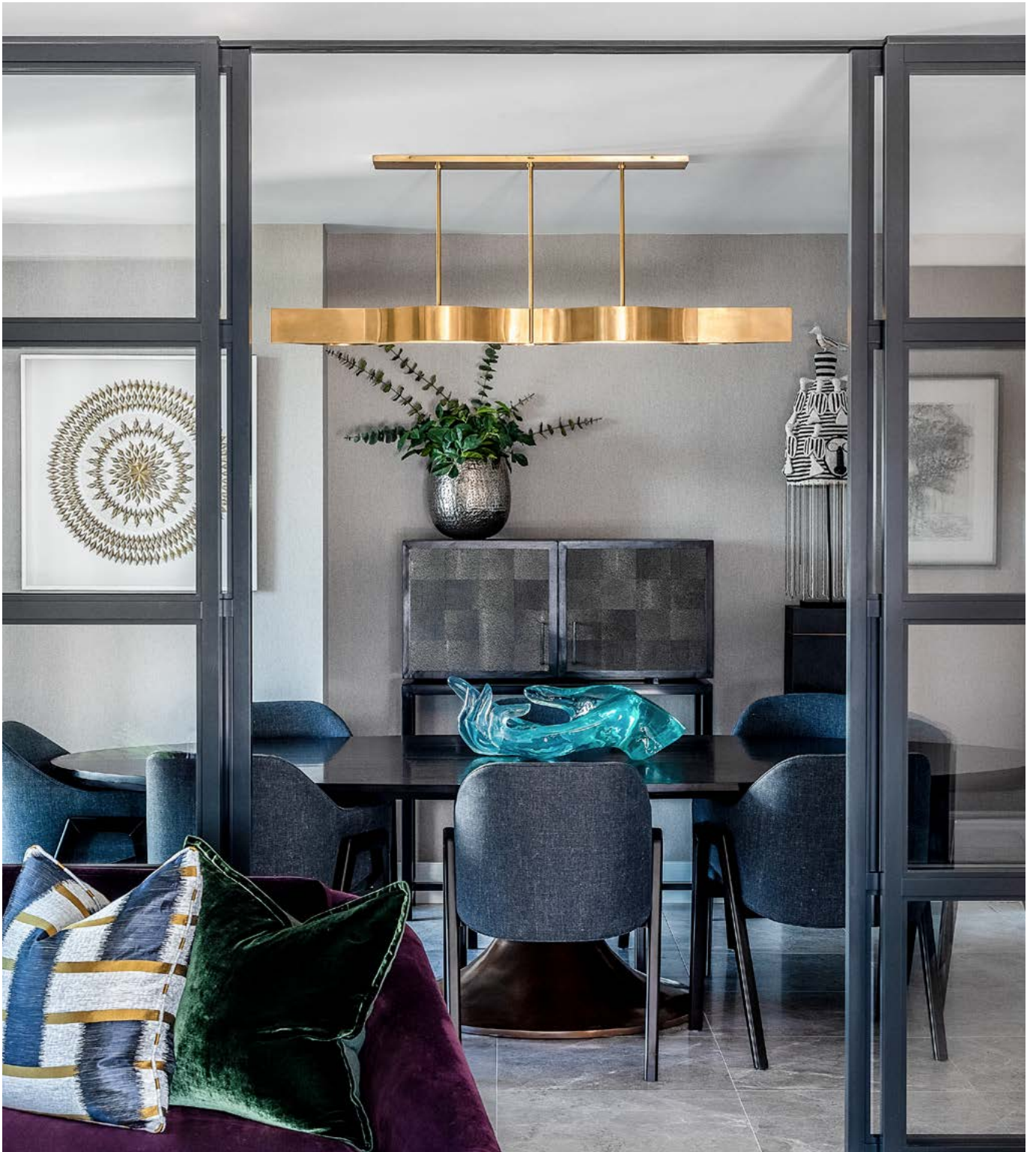


THE ART OF
DESIGN

LUXURY HOME INTERIORS

£4.95 • ISSUE 53



LUXURY TILES /
GET YOUR HOME READY FOR CHRISTMAS /
TRANSFORMING A LONDON HOME



Chambord dining table

Keplero chandelier

Ines chair

smania.it



 **SMANIA**
FURNISH YOUR STYLE

vicaima 
UNEXPECTED HARMONY

Respect.

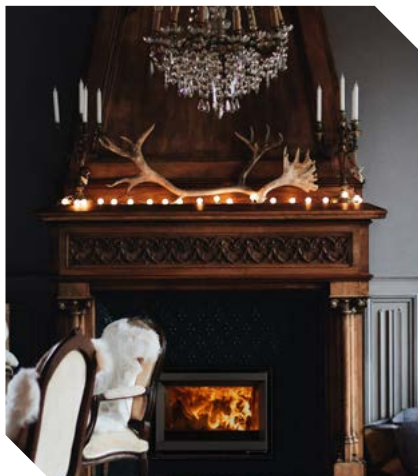
Caring about our future today.



Follow us:



vicaima.com



CONTENTS

6

BIG VIEWS, BRIGHT HUES AND A RICH ASSORTMENT OF ART

Design studio, Angel O'Donnell, creates an interior that echoes the vibrancy, artistry and culture of London.

36

THE IMPOSSIBLE. MADE POSSIBLE.

A remarkable collection of limited-edition collectible works in stone exclusively designed by Tollgard for The Refined Workshop.

28

GET YOUR HOME READY FOR CHRISTMAS

Whether you fancy a complete overhaul or just making smaller changes, we've made a list and checked it twice to help your home look glorious for your guests.

55

VIVRE LACROIX

Since 2010, the iconic, colorful and baroque universe of the Maison Christian Lacroix celebrates the art of living through creativity and freedom.

Editor in Chief

Antony Holter
T: 01304 806039
E: editor@mhmagazine.co.uk

Editor

Rebecca Keating
T: 01304 806039
E: rebecca@theartofdesignmagazine.com

Publishing Director

Martin Holmes
T: 01304 806039
E: martin@mhmagazine.co.uk

Sales Director

Rupert Churchman
T: 01227 936977
E: rupert@theartofdesignmagazine.com

Digital Manager

Jamie Bullock
T: 01227 936971
E: jamie@mhmagazine.co.uk

Business Manager

Josh Holmes
T: 01304 806039
E: josh@mhmagazine.co.uk

Studio Designer

Sarah Johnson
E: sarah.johnson@mhmagazine.co.uk

Accounts Department

Alison Holmes
T: 01304 806039
E: accounts@mhmediaglobal.com

MH Media Global Ltd

Office 15, Second Floor, Innovation House,
Discovery Park, Ramsgate Rd,
Sandwich, Kent. CT13 9FD



Cover Image Courtesy of:
Angel O'Donnell



The Art of Design
is proud partners with



BIG VIEWS, BRIGHT HUES AND A RICH ASSORTMENT OF ART

Design studio, Angel O'Donnell, creates an interior that echoes the vibrancy, artistry and culture of London.

Angel O'Donnell were tasked with interior designing a large penthouse in The Dumont, on London's Albert Embankment. As their client loves art, colour, pattern and texture, the studio made sure that each room was treated to a fertile mix of tactile materials, handcrafted furniture and carefully curated art.

Everything from hand thrown ceramics to specially commissioned acrylics made it into their scheme. "We even found room for an African ceremonial crown", says Co-Founder and Creative Director, Ed O'Donnell.

Many standout pieces were designed in-house, including wool bouclé swivel chairs, jewel-toned velvet sofas, plushly padded upholstered walls and a bronze-clad fireplace. As fellow Co-Founder and Managing Director, Richard Angel, affirms, "This level of detail creates those surprise-and-delight moments we always want for our clients".

THE SHARDS

The team started with the principal bedroom. They wanted it to feel cosy and cocooning; a colourful sanctuary filled with warm throws, soothingly plump pillows and reassuringly heavy sheets.

British oil painter, Tate Gall, inspired the rhomboidal shapes for the upholstered wall. In fact, his vibrant geometric shards – reminiscent of shattered stained-glass windows – prompted the bold and enlivening palette used throughout the apartment.



JEWEL TONES

Next, the team turned its attention to the showstopping living room with its sweeping views of the Capital. Everything in this space, except for a glass and vellum coffee table by Julian Chichester, was designed by Angel O'Donnell and made by London-based artisans.

Curved forms join clean-lined bronze and glass finishes to faintly imitate the snaking River Thames and eclectic architecture outside.

The colour palette also works a subtle magic by mimicking the berry reds, sapphire blues and juniper greens found in nature. While vibrant, these organic colours exude a sense of tranquillity and wellbeing.



BOLD AS BRASS

"We opted for a subdued palette in the dining room" says Ed. "That way, the rippling brass pendant light, aqua-blue hand bowl and artwork would really pop".

The large oval dining table with its brushed bronze base and black-stained oak top was designed in-house. As were the dark grey linen dining chairs.

Here, textures abound in all directions – from the grain of the wood to the shagreen leather of the drinks cabinet.



DOWN TO EARTH

In one corner of the kitchen, a blend of earthy pigments, calm neutrals and kaleidoscopically bright artwork is warm and smile-inducing. It just goes to show how impactful an unabashedly strong colour palette can be.



TRUE BLUE

Colours, textures and patterns thrive in the guest bedroom. The faceted wallpaper, whose irregular polygonal shapes give the illusion of relief. The deep-fluted, half-height upholstered wall. The geometrically patterned Christian Lacroix cushions. The bright collages above the bed, by British artist Caroline Morgan. These elements coalesce to form one visually enticing whole, a little haven for friends and family to sequester themselves in.

ART HOUSE

Water colours, ceramics, line drawings, limited edition prints and embossed graphics enliven what could have been a dark and narrow hallway.

The brushstroke effect wallpaper adds another layer of texture and artiness to space. It's an area that holds its own, encouraging anyone passing through to pause and take in its variety of art.





COME FULL CIRCLE

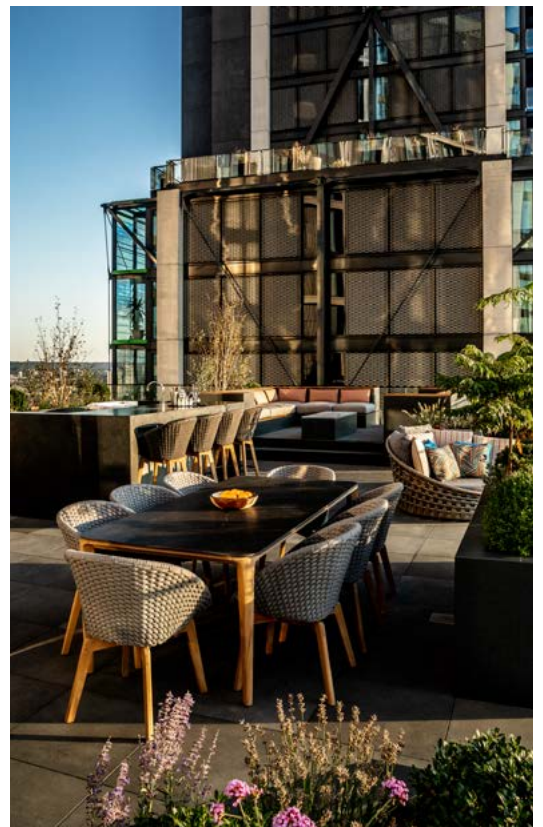
In another guest bedroom, a bespoke headboard is evocative of a large pale moon or hazy sun sinking into a pillowy horizon. The cool tones of the eau de nil linen mingle with the warm, coppery tones of the Missoni throw for a calm and meditative space.

TEXTURED TERRACE

“The roof terrace is a gem”, says Richard, “we knew it had to be every bit as elegant and stylish as the interior.” And it shows. Barstools have long tapered legs, chairs have soft woven seats, and a large circular daybed is piled high with custom-made cushions, using fabrics from Zinc Textiles and Kirkby Design.

They also consulted plant specialists to advise on sustainable native trees, herbs, hedges, perennials and ornamental shrubs. These things, of course, add yet more shape, colour and texture to their designs, as well as a little inner-city biodiversity.

Wherever you turn, there’s something to catch your eye. “We wanted each space to have a joyful and eclectic feel, like it’s been pieced together over many years”, says Ed. Richard concurs, “There’s certainly never a dull moment in this home”.



SHAPES AND GAMES **IN HUNGARY**



For this project in Hungary, the end user spends a significant part of his time in a villa with direct water connection on the shores of Lake Balaton, 45 minutes drive from Budapest.

The covered terrace, which can be opened from 3 sides and can be shaded on all surfaces, serves as an exclusive dining and lounge area, where the family spends most of the day to relax and chill.

The protagonist of this special interior is the dual-function Fusiontables dining table, which invites up to 10 family members or invited guests to an exciting game of billiards after a cozy dinner - while admiring the stunning view of Lake Balaton.

Fusion Tables Design Hungary, the exclusive importer of Fusiontables in the country, has installed the unique configuration: the height-adjustable "MetalLine / WhiteMat / Vintage / REVERSO

Rock" table with an EasyLift system built into the legs, the fusion storage cabinet for the clever storage of cues and table tops, the design FUSION chairs and the FUSION bench.

By these lockdown times such a place can become soon a Must to enjoy nice moments with family and friends without leaving the country.

The motto of the Hungarian Fusiontables partner translated into English: "shapes and games", referring to the contemporary and unique design of the Fusiontables dining tables, as well as their versatility.



www.fusiontables.com

LET'S PLAY WITH STYLE JAMES



Check the other colors and timbers available
www.fusiontables.com



[fusiontables]
by Aramith

DESIGN ADVICE: **CREATE THE BEDROOM OF DREAMS**



It might not be the first essential you think of when it comes to designing a bedroom, but adding a rug can reap serious style benefits.

According to the experts at independent online shop The Rug Retailer, incorporating a rug into your bedroom scheme not only elevates your interior style but helps create a cosy, relaxed atmosphere – perfect for resting and recharging.

Chris Bond, Director of The Rug Retailer, said: “Whether you have carpet, wood or even tiled floors in the bedroom, there is still plenty of extra style points to be earned with the addition of a rug.



“Choose correctly and a rug can be used to pull together different elements of your bedroom design scheme. Plus, adding layers, even on the floor, will create a more relaxed, warming feel which is perfect in a bedroom.”



Here, Chris shares his top three design tips for incorporating a rug into the bedroom:

WEAR IT BIG

Opt for a large rug that will 'elevate' the bed. In most bedrooms, the bed is always going to be the main focal point and placing a large rug underneath it will enhance this feeling. And don't think this is a trick solely for wooden or tiled bedroom floors – choose a contrasting colour and design to make your carpet pop.

GO BOLD

Many shy from bold colours and patterns in the bedroom, opting for more neutral schemes to create a sense of calm. A rug is a understated way to introduce some colour, pattern, and interest, without dominating the rest of the scheme.

INTO THE ZONE

For bedrooms large enough to have different areas, smaller rugs are a perfect way to zone the room. Whether you want to section off a dressing table, bedroom storage or a seating area, use a rug as a subtle separator.



www.therugretailer.co.uk

t e r r æ n

CREATING PATTERN WITH TEXTURE



ulster™
www.ulstercarpets.com

EXPLORE DESENIIO'S NEW AW21 TRENDS **BEFORE MAKING THE AUTUMN & WINTER INTERIOR SWITCH UP**



Most of us want to change our interiors to reflect the seasons. We tend to want light and bright homes during the summer months, and a more cosy and comforting feeling in autumn and winter.

While it's not realistic to change key pieces such as your sofa or coffee table for each season, it is very easy to make smaller tweaks. As we move into autumn and winter, adding cosy blankets to your sofa, choosing statement candlestick holders, and switching up your prints will make a huge difference to your space. Once you have invested in frames, you can effortlessly switch the prints within whenever you feel like a change.

As we bring our guests out from the gardens and into the homes, now is a great time to consider implementing key interior trends to the living spaces with Desenio's new AW21 wall art collections.

WOODLAND RETREAT

Bring the wild beauty of nature to the home and experience the blissful calm of the forest with the **Woodland Retreat AW21 collection**. Experience the forest in

all its beauty by mixing the full spectrum of green hues, from bright to dull, and dark to light - you can never mix too many greens! Peridot and Bronze Green are the key colours for the Woodland Retreat trend. Offset the greens by using natural wood tones in frames and other accessories.

The Forest Grove print perfectly captures the soft, ethereal light that can only be found in woodland. Feature this print with a wooden frame to bring the crisp, forest feeling to your walls.



CLASSIC CONTRASTS

Add the ultimate touch of sophistication to the home by contrasting shapes, colours, and textures with the **Classic Contrasts AW21 collection**. For this trend, mix and match shades at the opposite ends of the colour spectrum. You can either emphasise darker shades, accenting with creams and beiges, or go for a lighter look that's complemented with black and grey accessories. Ready to give you and your home a fresh start? The A New Story print features an uplifting quotation in on-trend block lettering.

ROMANTIC REBELLION

Bring your personality to life in your home by choosing art prints that are as bold as you are with the **Romantic Rebellion AW21 trend collection**. Mix shades of pink together to achieve a layered and bold

aesthetic. Two of the trending pink shades are Garnet Rose and Rhododendron. If you want to add an accent colour, consider a touch of Medieval Blue.

If you love the modern take on baroque portraits, the Bubblegum Princess print is a must for you. It works both as a stand-alone framed print or as part of a gallery wall.

“The Romantic Rebellion trend is a chance to embrace glamour and opulence within your interiors. Baroque imagery is remixed with a modern and edgy twist to create a playful vibe,” says Annica Wallin, Executive Creative Director at Desenio.



SOFT MOMENTS

Breathe into the present and reset your space with warm tones and relaxing neutral prints with the **Soft Moments AW21 collection**. Sink into soft blankets with a hot drink and a good book - the world can wait. The Soft Moments trend is about creating a space that works for you. Design a comfortable home office or create an elegant and relaxed feeling in your living room. Choose the Mindfulness quotation print for a beautiful reminder to stay in the moment.

Speaking of the new AW21 trends, Desenio's Executive Creative Director, Annica Wallin, said: "This autumn and winter we're going to be seeing four different distinct trends take form. We'll see a trend focused on the beauty of forests and woodland, inviting us to retreat to nature and indulge in simple pleasures. In contrast, we'll also be seeing a trend based on femininity and creativity, with bold pinks and twists between old and new. We're also drawing inspiration from classic contrasts, mixing colours and

textures to achieve a striking and modern look. The final trend hones in on the theme of comfort, refuge, and self-care, with calming shades and serene imagery.

Popular wall art website, Desenio is passionate about interiors and specifically Scandinavian design. Desenio offers a wide range of posters along with frames, hangers, picture ledges and clips. The brand also boasts an online presence in 33 countries and are steadily breaking into new markets.



To create a perfect gallery wall, use Desenio's new tool to find designs and frames that match each other.

www.desenio.co.uk/en/ak/inspiration/create-your-gallery-wall#/

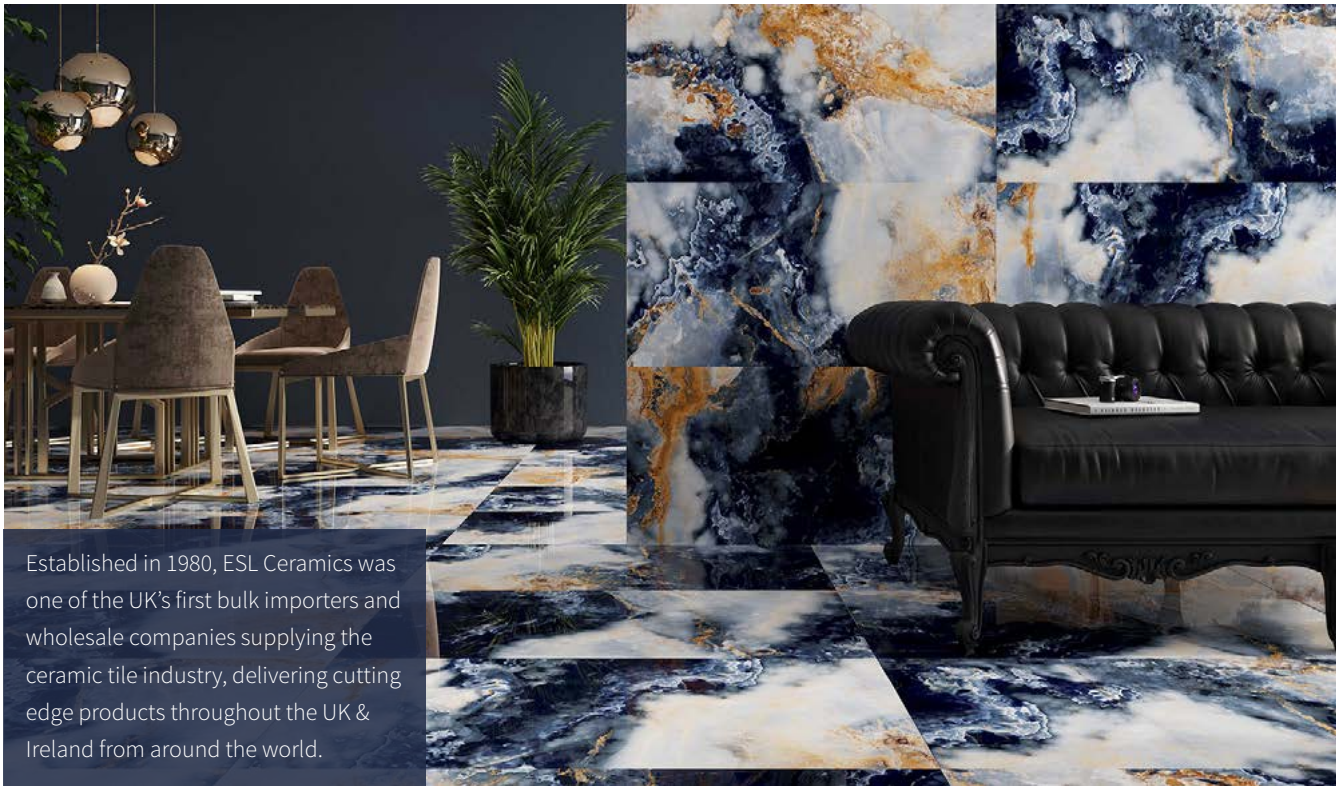


 **Posterlounge**[®]
ART FOR EVERY WALL

- ✓ High-quality wall prints & frames
- ✓ Wide range of products
- ✓ Fast & affordable delivery

www.posterlounge.co.uk

TOP QUALITY CERAMICS



Established in 1980, ESL Ceramics was one of the UK's first bulk importers and wholesale companies supplying the ceramic tile industry, delivering cutting edge products throughout the UK & Ireland from around the world.

Although our company has grown and changed over the years, our commitment to deliver top quality innovative products, coupled with great customer service has always been the cornerstone of our business.

Choice, value and service is our mission statement!

We stock a wide selection of ceramic and porcelain tiles from around the world and can supply pallets, trailers or full containers, depending on your unique requirements. With four decades of experience sourcing tiles from around the world, focusing on innovative design and maintaining the highest quality from leading manufacturers, we are able to offer a complete portfolio of quality tile ranges to suit all tastes and styles.

Operating from our head office at Twickenham and our vast warehousing facilities in Braintree we service the whole of the UK. There are over 50 dedicated professionals that make up the ESL Ceramics family and we have an experienced National sales force with first class tile industry knowledge and expertise.

As one of the country's largest wholesale tile specialists we supply tile distributors, builders merchants, bathroom & tile retailers as well as house builders, small and large developers, design and build contractors and tiling contractors. We are also preferred tile suppliers to offsite construction manufacturers.

Our aim is to enable clients to keep project costs as low as possible without compromising the integrity of the overall

design, or the quality of the products.

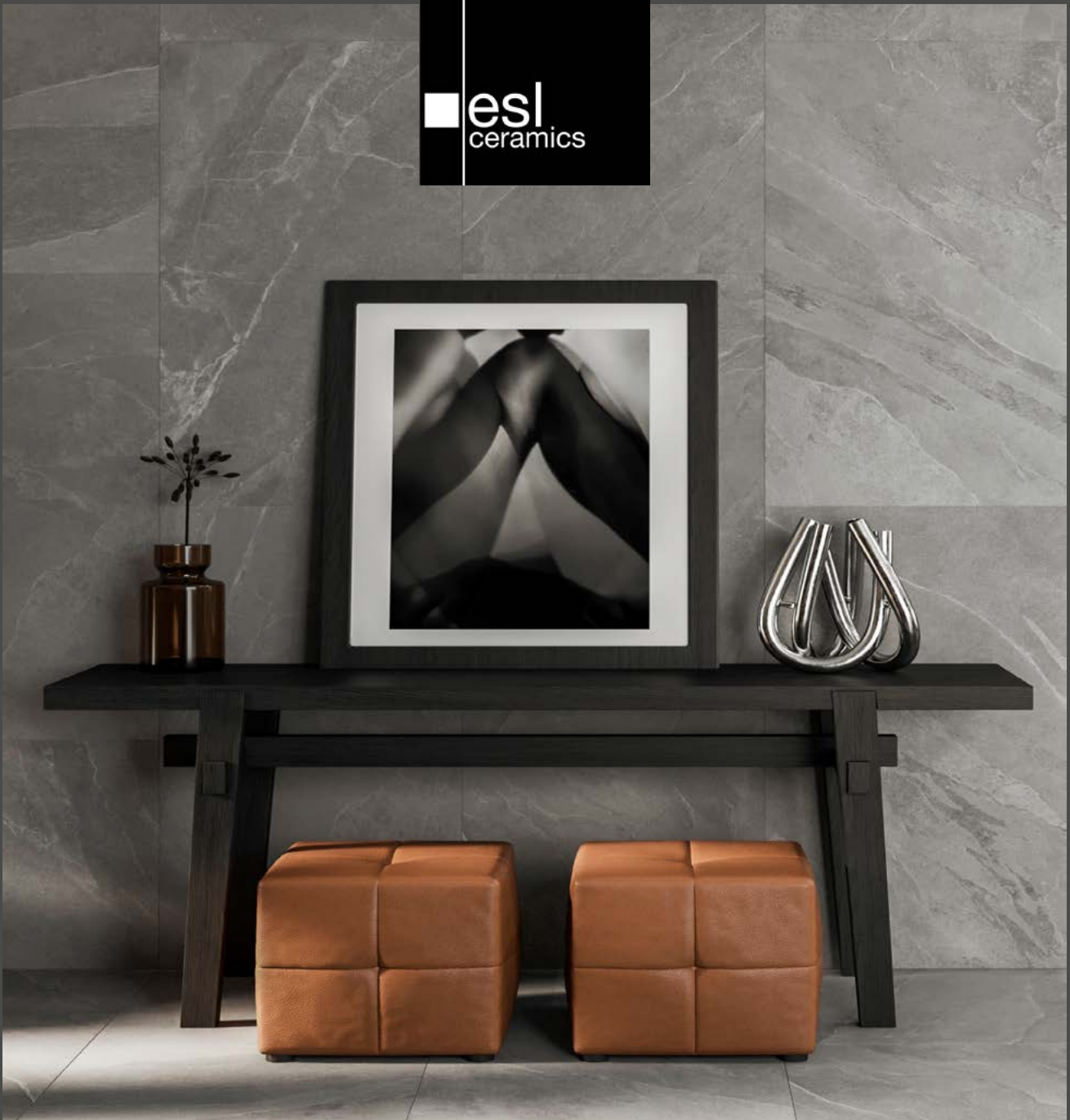
Clients are now increasingly insisting on the importance of value engineering and this is an area where we can really help. We prove time and again that high perceived value and high quality design can be achieved simultaneously without high costs.

If you would like further information or to arrange for our Sales Managers to visit you, please get in touch.



The logo for esl ceramics, featuring a white square icon to the left of the text "esl" in a bold, lowercase font, with "ceramics" in a smaller, lowercase font below it.

esl
ceramics



Suppliers of Innovative Tiles for Over 40 Years



www.eslceramics.co.uk | +44 (0) 20 8744 1122



INNOVATION
THROUGH DESIGN
AND EXPERIENCE:
THE NEW STÛV 6
STÛV AMERICA

The Stûv 6-in has a sleek look that suits the authenticity of masonry fireplaces, as well as any style of home decor. It stands out due to its streamlined door frame, providing an ample view of the fire, and its smaller insert dimensions, designed to fit easily into existing masonry hearths. This unit was engineered to offer a heating capacity adapted to the energy needs of today's homes, while creating a cozy atmosphere reminiscent of the crackling wood fires of yesteryear.



A WOOD-BURNING INSERT THAT TRANSCENDS TIME

Many ancestral homes have a masonry hearth. Unfortunately, these fireplaces, which date back to another era, are not adapted to current environmental guidelines. They are not airtight, and thus emit fine particles at a rate well above North American standards. The Stûv 6-in wood-burning insert was designed to make these hearths more efficient and environmentally friendly.

The new and growing Stûv 6 family of products currently includes two models. Several other sizes will soon be available in North America.

INGENUITY IN EVERY DETAIL

Ingenious mechanisms were incorporated in Stûv 6-in's design to ensure optimal use. These include a handle in a cool area beneath the appliance, a detachable support casing that facilitates installation, a bimetal system that favours air intake and makes it easier to light a fire when the appliance is cold, and a slanted smoke outlet option to connect to a chimney pipe further away. The Stûv 6-in also features a hinged door with two hooks for extra solidity and an airtight seal, and a cast iron combustion chamber that provides high heat resistance and maximizes performance. Finally, the Stûv 6-in is autonomous thanks to its factory-configured air intake, which delivers just the right amount of air to the combustion chamber for peak efficiency. Gone are the days of fiddling with the damper to get the perfect air flow! Simply light the fire, sit back, and enjoy.

Different finishing frames can be selected to complete the look. The thin edge frame is delicate, with an understated look that creates a discreet finish. The picture-type frame is made of steel and is available in different widths. The latter is ideal for larger masonry hearths, as it creates a polished finish all around the unit's facade.





ABOUT STÛV AMERICA

Founded in Europe in 1983, Stûv designs and manufactures wood-burning and pellet stoves and fireplaces. Since 2007, Stûv appliances have been adapted and certified in Canada to meet the highest standards and requirements of the North American market.

Stûv thinks globally, while acting locally. Local actions include establishing a manufacturing plant in Canada that is exclusively dedicated to the North American market. The company purchases only the high-quality raw materials, and works with the best local suppliers.

Stûv America offers more than 35 wood-burning stove and fireplace models that combine performance and aesthetics.



TECHNICAL SHEET

Product name: Stûv 6-in

Appliance category: Wood-burning insert

Outside: Steel

Inside: Cast iron

Color: Black

Dimensions: Several models available

Applications: Masonry hearths

Product launch date: March 2021

Details: Heating power adapted to the smallest spaces, precision assembly, automatic combustion air inlet calibration, produces little ash, easy to light, fits all masonry hearths, and energy-efficient performance.

www.stuvamerica.com

Images: Armelle Habib + François Chevalier



COACH HOUSE

www.coachhouse.com / [@coachhouseuk](https://www.instagram.com/coachhouseuk)



Specialist tile retailer Porcelain Superstore has launched a trio of opulent new tiles to offer homeowners a stylish slice of luxury living.

OPULENCE ABOUNDS: **PORCELAIN SUPERSTORE LAUNCH A TRIO OF NEW LUXURY TILES**

Tiffany Pearl, Savoy Oro and Lavish Gold are the three new additions to the Porcelain Superstore line-up.

Typified by an elegant marble-effect, these large format tiles exude glamour and sophistication.

And, thanks to advances in manufacturing, all three are actually made from porcelain – meaning they are much kinder on the bank balance while still radiating all the luxury of real marble.





Abbas Youssefi, Director of Porcelain Superstore, said: “Our new collection of marble-effect, opulent tiles ooze luxury. They beg to be admired and truly inject that wow factor wherever they are placed.

“It’s no surprise that marble is the go-to material for five-star bathrooms, but for homeowners, this can work out pretty pricey.

“This trio of tiles offer that same high-end finish, but with all the benefits of porcelain tile. They are extremely hard-wearing and easy to maintain, so they will look fabulous for years to come.”

ABOUT PORCELAIN SUPERSTORE

Independent and family-run, the brothers behind Porcelain Superstore might have been brought up in the tile industry, but they aren’t afraid of shaking it up.

Passionate about porcelain, they scour Europe and beyond for their curated collections, which are handpicked from only the most respected tile factories.



Only the best-looking and top-quality tiles make it to their warehouse where bright, vibrant geometrics sit alongside more traditional large format tiles to offer customers the widest choice of quality porcelain tiles.

Throw in exceptional customer service and five-year guarantees on all tiles and it’s easy to see why Porcelain Superstore are not afraid of breaking the mould.

www.porcelainsuperstore.co.uk

GET YOUR HOME READY FOR CHRISTMAS

Christmas may be coming, but it's not late to give your ho-ho-home a makeover ready for the festive season!

Whether you fancy a complete overhaul or just making smaller changes, we've made a list and checked it twice to help your home look glorious for your guests.

DECK THE HALLS:

Hallway decorating ideas for Christmas

There's nothing like making an entrance. Welcome your guests in style with a heavenly hallway. A mirror is a wonderful way to add in more light and create the illusion of more space and photos show personality. Don't forget practical touches like coat racks, shoe storage and umbrella stands. If you're looking to change your flooring, not only do hallway tiles make a great first impression, but they are also hardwearing, durable and easy to clean (especially muddy footprints).



ROCK AROUND THE CHRISTMAS TREE:

Decorate your Living Room for Christmas

Living rooms are a hive of activity over the festive period, with presents under the tree and comfy sofas to chat/nap on! Furniture trends for 2022 will see lovely rounded edges and natural materials, so these are great styles to invest in if you want a modern but timeless look. Throws are perfect for snuggling up to watch a festive film, and plants add a splash of greenery.



Opting for tiles in your lounge or living room can create a stylish space, especially if you've opted for an open plan layout. For more warmth, invest in underfloor heating or introduce a lovely big rug to contrast or coordinate with your decor.

And don't forget to glam up your fireplace to impress Santa when he comes down the chimney!



SERVING UP SOME STYLE –

Dining room ideas for Christmas

Dine in style by giving your dining room a new lease of life. Invest in comfortable chairs for your guests, a seasonal tablecloth and some jazzy artwork. If you're thinking of revamping your dining room, you could get stylish underfoot with wood effect tiles to wow without the hefty price tag of real timber or create a feature wall to introduce some interest without redoing the whole room. Our favourite styles at the moment are split-face, hexagons and scales to pack a real punch.



COOKING UP A STORM:

Decorating ideas for your kitchen this Christmas

We all spend a lot of time in the kitchen over Christmas, preparing an endless cycle of meals and drinks – plus the dreaded washing up. Spend the months in the run up to the big day getting organised. Have a sort out and create extra space in your fridge and freezer ready for all the incoming goodies, and sort through your pots, pans, cutlery and crockery, it's amazing how liberating a reordered cupboard can make you feel! Make the time you spend around the hob more harmonious with a new splashback to catch any splatter from the sprouts.

SOAK AWAY THE STRESS:

Bathroom decorating ideas for Christmas

After all the festive flurry, there's no better way to relax than a soak in the tub or



revitalise under a nice warm power shower in a beautiful bathroom. Bathscaping is a wonderful trend to follow, that simply involves adding small touches to your bathroom to make a big difference. Why not treat yourself to a luxurious bathmat, matching dispensers, or a tray to hold candles and a book while you unwind in peace. Create a feature wall in your bathroom from mosaics to emulate a luxury spa, go for a classic monochrome or keep it chic with soft beige, grey or white.



SPRUCE UP THE SPARE ROOM FOR FESTIVE GUESTS

Be our guest! Don't forget the spare room to guarantee a good night's sleep for your visitors. Luxury bedding will go down a treat, as will throw cushions, and robes and slippers if you really want to wow. When it comes to bedroom decoration, a statement floor or wall can add the wow factor to a guest room. Worried that it'll be too chilly underfoot? Go for some luxurious under-floor heating to keep you warm this winter, or include some deep pile rugs.

We hope you've had yourself a merry little browse through this post and happy festive decorating!

01792 773015 | www.directtilewarehouse.com

GAÏA

by LALIQUE



SLEEK, STREAMLINED ELEGANCE ON TAP WITH RAK-SORRENTO

Turning the finishing touch into a focal point of the bathroom, RAK-Sorrento from RAK Ceramics is a brassware collection that offers a solution for every installation.



Available in four finishes to meet every design requirement, this latest brassware range offers the opportunity to bring individual flair into the bathroom.

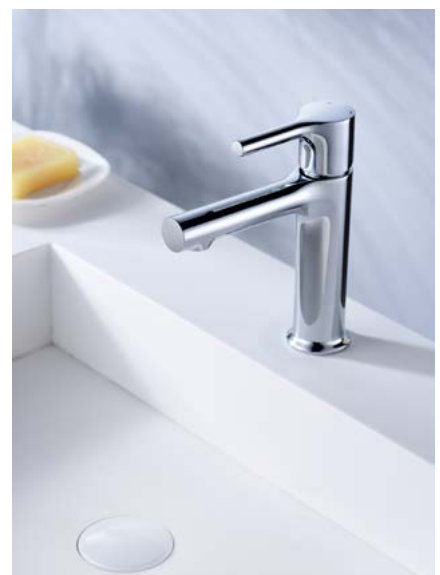
RAK-Sorrento has a timeless elegance, with a long body and spout combined with single lever control for a modern twist. As well as Polished Chrome, the brassware can also be chosen in on-trend Brushed Gold, Brushed Nickel or Matt Black.

The RAK-Sorrento basin mixers are available in three sizes – standard, medium and tall – enabling the brassware to be combined effortlessly with any washbasin,

with a wall-mounted basin mixer also included in the range. For the bath, RAK-Sorrento offers an abundance of choice, including deck-mounted, exposed and freestanding options.

The sleek styling of RAK-Sorrento is carried through to the shower, with a choice of thermostatic valves that complete the streamlined look.

Giving any bathroom a stylish makeover, RAK-Sorrento delivers an excellent performance and is backed by a full manufacturer's warranty.





IP SURFACES

MAKING THE IMPOSSIBLE POSSIBLE



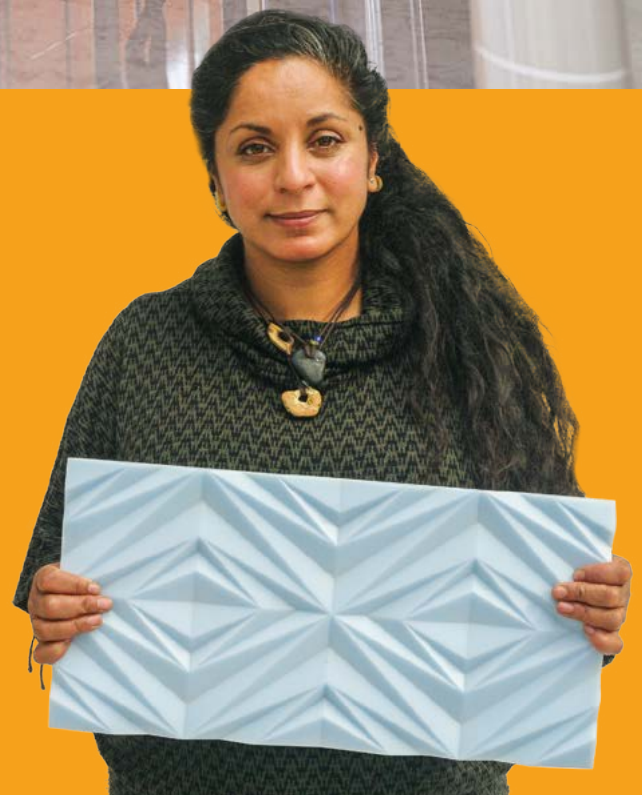
DRAMA AND DYNAMISM BY HALIMA CASSELL

BESPOKE COMMISSIONS TRANSFORMING
ARCHITECTURE INTO TIMELESS ART

IP Surfaces is collaborating with world renowned British sculptor Halima Cassell MBE to deliver bespoke art installations. Halima's use of strong geometric elements and recurrent patterns combined with architectural principles, creates a dramatic sense of movement. Our innovative use of materials and world-class embellishment techniques will ensure that any space, external or internal is captivating.

TO FIND OUT MORE VISIT: [IPSURFACES.CO.UK/HALIMA](https://ipsurfaces.co.uk/halima)

IP Surfaces Ltd. Telephone: 0333 344 1691. Email: enq@ipsurfaces.co.uk



EvoLift - OPENING SYSTEMS



THE EVOLUTION OF THE OPENING SYSTEMS.

The EvoLift family of systems ensures a perfect opening and closing movement for all flap door applications.

EvoLift components combine compact dimensions, to maximise available storage space, with great strength and durability. Highly innovative and designed with elegance and refinement, EvoLift's modernist, linear profiles are complemented by neatly-designed covers, presented in tasteful colours and finishes that blend perfectly with all furniture styles.

EvoLift opening systems cover all applications of single flap doors, folding doors, parallel opening doors and swing opening doors. All versions incorporate a spring mechanism that allows a wide range of adjustment. The adjustability of EvoLift means that all variants of door dimensions and weight are covered by only two strengths of the spring mechanism.

All EvoLift systems are available with soft close, to ensure a smooth and controlled movement, and with Push self-opening for flap doors. Suitable for use on wood-based and aluminium-framed doors.

www.salice.com

SALICE

Tojo™



Innovation is our drive



www.tojo.de



Design Furniture

The Tojo Möbel GmbH is a dynamic, innovative company that was founded in June 2000. The aim is to create furniture with alongside time-less design which distinguish them from its functionality, ecology and economy.

The sales success of the design-oriented and award-winning products at affordable prices shows that the Tojo Furniture Co reflects the times.



reddot winner 2021
furniture design



THE IMPOSSIBLE. MADE POSSIBLE. **THE WAVE COLLECTION**



A remarkable collection of limited-edition collectible works in stone exclusively designed by Tollgard for The Refined Workshop.

Wave Column Detail



GRAVITY. A defiant force of nature, driving objects of mass together. This natural phenomenon serves as the inspiration behind Tollgard's first collection of functional sculpture for The Refined Workshop. Exploring the gravitational attraction of objects around us, designers Staffan Tollgård and Filippo Castellani were moved to reinterpret convention and push the limits of material traditions.

Following a successful preview at FOCUS/21, the Wave Collection will officially launch during Frieze on Wednesday 13th October 2021. A curated exhibition of Artist's Proofs from the collection will be presented as part of an exclusive event at The May Fair Hotel, London.

The exhibition will be available to view from Wednesday 13th – Sunday 17th October 10am – 7pm

Tailors in stone, The Refined Workshop, worked to realise this vision with The Wave Collection. A series in marble, the collection features tables and objects that defy rules and turn assumptions on their head. Part of the Cheevers Poole family, the pioneering artisans at The Refined Workshop share Tollgard's commitment to excellence in design and authentic craftsmanship.

A juxtaposition of soft curves and inherent strength, The Wave Collection highlights the importance of every surface within a design. These masterpieces bring intrigue to an otherwise overlooked surface - the underside of the tabletop - and are as much about what is absent as what is present. Seamlessly slotting together, the top gently rests on a graduated elliptical base. This collection achieves extraordinary complexity with apparent simplicity.



The Wave Console

GRAND ANTIQUE, RICH IN CHARACTER & CONTRAST

Beneath the surface of the design lies another story of history and power expressed in the stone itself. Grand Antique, a monochromatic beauty, rich in contrast and character, roots the provenance of these pieces back to the ancient Romans. Formed over millions of years in the valley of the River Lez, in the Ariège region of France, this is the most precious marble in the Pyrenees. From the Roman to the Byzantine Empires, this quarry and its coveted stone have adorned palaces through the centuries.

The most recent chronicled use of Grand Antique marble was by Emile-Jacques Ruhlmann for the fireplace surround within his historic pavilion, 'The House of the Collector,' at the 1925 Exhibition of Decorative Arts in Paris. Thought to be exhausted, the quarry closed some years later. Having been fortunate enough to have sourced a unique new block – vast and of incredible quality – The Refined Workshop + Tollgard sought to celebrate this extraordinary material with an exclusive collection - a fitting new beginning.

To create heirloom works from this rare and fragile material, The Refined Workshop merged artistry and engineering via 5-point CNC machinery. Technical excellence allows for a visually impossible effect, with the slimmest of supports holding a monumental marble top.

Carved into being is a collection that celebrates rebellious design, impeccable craft and the infinite wonder of nature's most beautiful material.

WORKS OF FURNITURE

Dining Table

The Wave dining table presents a contemporary masterpiece. Intricately crafted using one of nature's most

fascinating materials, the soft curves of the wave bring this piece to life, making it a truly functional sculpture.

Console

The Wave console table expresses an elegant form, impeccably carved into being with one of the most prized natural stones in the world. A masterly combination of great design, authentic craftsmanship and innovative engineering.

Bench

The Wave bench sits at the nexus of functional sculpture, inviting physical engagement with a piece of art engineered from one of the most striking and fascinating natural stones in the world.

Coffee Table

The Wave Bench



WORKS OF ART

CENTREPIECES

Vases

Sculptural and subtle in their expression, the Wave vases capture the essence of the collection perfectly. Each of these contemporary masterpieces presents a distinctively architectural quality through its wave-inspired surface.

Boxes

Storing hidden treasures in the most elegant of forms, the Wave boxes are intricately crafted using one of nature's most fascinating materials. The soft curves of the wave bring this piece to life, connecting the lid and its base seamlessly. A truly functional sculpture.

Bowls

To be filled with interesting treasures, the Wave bowls are sculptural pieces that are intricately crafted using one of nature's most fascinating materials. The soft curves of the wave bring this piece to life, making it a truly functional sculpture.

A STORY OF COLLABORATION, CRAFT & INNOVATION

THE REFINED WORKSHOP

A pioneering artisan stonemasonry business breathing new life into a traditional trade. With vast experience spanning marble design, procurement, manufacture and installation, our service is completely tailored to the unique requirements of each project. From the initial selection of each bespoke slab to the detailed design and delivery of every exceptional object, we bring craftsmanship, precision and passion to all things stone.



Filippo Castellani and Staffan Tollgård inspect the Wave Collection prototype with Jessica Barrington from The Refined Workshop

TOLLGÅRD

Award-winning interior and product designer, Staffan Tollgård was born and raised in Stockholm. He uses his earlier career in film-making as inspiration, manifesting his passion for story-telling through his interior design projects as well as product design ventures. Staffan's design ethos is crystallised in two principles: the search for the Scandinavian notion of the distinctive 'red thread', or creative DNA, in each project, and the commitment to the creation of functional sculpture.

Working alongside Design Director Filippo Castellani, Staffan strives to tell the story of the piece instead of the story of the space. The direct, focused narrative of each piece offers an answer to a question of living that the interior design journey has uncovered.

THE COLLABORATION

Kindred spirits in their love of authentic craft and design excellence, The Refined Workshop and Tollgard's shared values laid the foundations for the Wave collection. Two brands, rich in expertise and ideas found a new sense of freedom with this collaboration, enjoying the chance to bring to life something beautifully impossible.

"Masters of their craft are always a joy to work with. The Refined Workshop combine engineering and artistry and it has been a pleasure and a privilege to bring the Wave Collection to life with them. They have taken our mantra of making the impossible, possible effortlessly into their stride. For the next collection we will try and make life even harder for them - they thrive on a design challenge."

Staffan Tollgård, Founder & Creative Director

"Connoisseurs of proportion, with many avid collectors around the world, Staffan and Castellani have surpassed our

expectations with the Wave Collection. Pushing the boundaries of design in stone, these are majestic works with an enduring narrative for our discerning clients to treasure and pass down the generations. We look forward to the next challenge Staffan and his team present us with!"

Jessica Barrington, Managing Director of Collections, The Refined Workshop

THE LAUNCH

Exclusive partner for The Wave Collection launch, the May Fair Hotel's rich heritage and passion for design excellence make it the perfect residence for the Wave Collection Artist's Proofs. The marble works will take centre stage in The May Fair Hotel's expansive windows, to be enjoyed equally by enchanted guests and captivated passersby.

The May Fair Hotel began its history in the 1920s, announcing itself to the world with suitably royal fanfare. Over the centuries it has played hosts to some of the world's most exclusive events and celebrated names in fashion, art, and film.



Today it sits under Edwardian Hotels London, one of the UK's largest privately owned hotel groups, founded by Jasminder Singh OBE in 1977. The portfolio encompasses a wealth of upscale five- and four-star luxury hotels, including celebrated new launch, The Londoner, alongside The May Fair Hotel.

Simon Brown from The Refined Workshop shares his thoughts on the collection with the team



tollgard.com | **+44(0)20 7952 6066**
+44(0)20 7952 6070 | **info@tollgard.com**

ELEGANT STORAGE SOLUTIONS

Transform your home with stylish yet practical storage solutions to achieve a streamlined, clutter-free space.

Take advantage of multi-functional furniture such as ottomans, storage beds, sideboards and shelving to help integrate extra storage into your home. These hardworking pieces of furniture allow you to store more, yet still be aesthetically pleasing.

More and more home décor trends are connected with storage and one of the main pieces that is popular for interiors today is an upholstered ottoman – a great choice for living areas and bedrooms. Ottomans not only add style and provide much needed storage space, but can also cleverly double up as coffee tables, extra seating and even beds.

Exclusive to My Furniture, the striking Pumpkin Storage Ottoman not only provides great storage, but can also double up as a footstool or extra seating.

An ingenious new design for My Furniture is The Jack Ottoman Bed, which can be effortlessly transformed from an ottoman to a bed in seconds. Perfect for those unexpected weekend guests.

Storage beds have long been a staple for extra storage in the bedroom and are the perfect solution for storing bulky items like seasonal bedding and even suitcases. Adding that extra bit of glamour is now easier with the stunning range from My Furniture.

Beautifully fluted upholstery, coupled with a clever gas lift mechanism for easy opening, makes these beds not only showstoppers, but perfectly practical too. Priced from just £549.99.

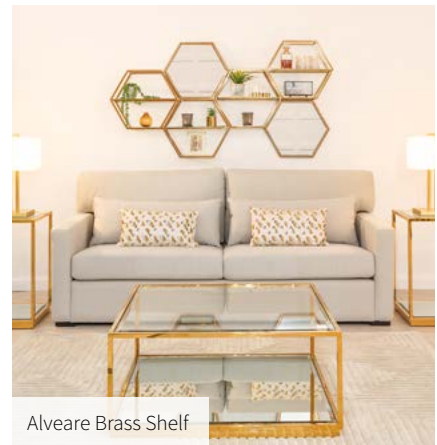
Although their primary function is storage, shelving can tie the interior design of a room together beautifully. The right



Anastasia Sideboard



Pumpkin Storage Ottoman



Alveare Brass Shelf

shelving can even stand out as a star feature – such as the stunning Alveare Modular Shelving Unit. The ingenious honeycomb design lends itself to be mounted in multiples alongside the accompanying mirror - creating a stunning display, as well as a useful storage space.

As far as storage solutions go, a sideboard

more than answers spatial concerns with large compartments and spacious drawers. Offering a wide range of options, the newest and most elegant design in the My Furniture collection is the Anastasia Sideboard. This impressive piece, available in three finishes, has a distinctive curved shape, featuring toughened mirrored glass and a polished marble top.

Discover luxury furniture and a wealth of home décor inspiration, visit: [my-furniture.com](https://www.my-furniture.com) or call freephone **0800 092 1636**.

FAST AND FREE DELIVERY TO UK MAINLAND.
Delivery available throughout Europe.



my-furniture.com

enquiries: 0800 092 1636



A STRONG ACCENT CHENNAI, INDIA



CONCEPT & CREATION

For this Chennai based residence of approx. 10,500 sq.ft in the heart of the city, the influx of ideas on our blank slate was quite overwhelming. Designing this multi-generational abode gave us immense scope to experiment with textures, materials, tones and traditions both old and new. And Design Co conceived both the interiors & the architectural design of this compact footprint measuring 12m X 26m over 3 levels. The building stands strong on its own with an understated and timeless façade that would age well over time. Perimeter garden walls border the house to influence the temperature of the villa, Chennai being hot & oppressive all year round.



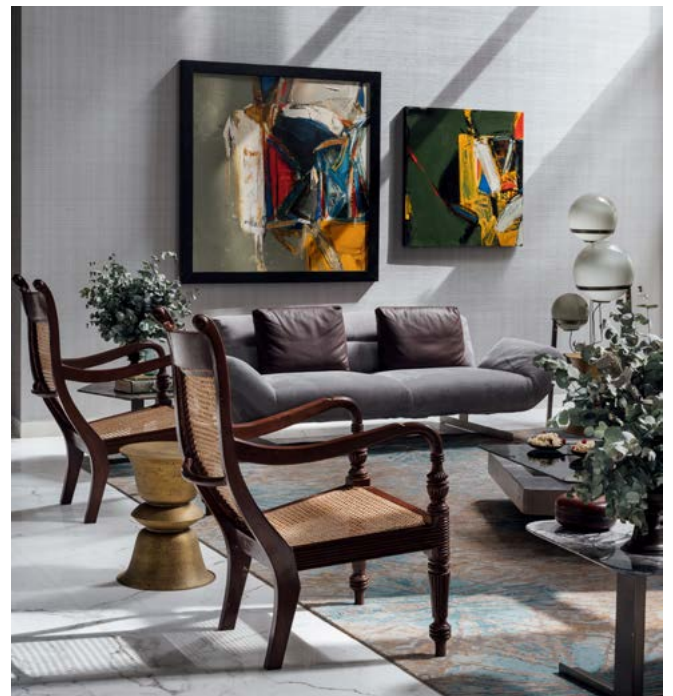
TRADITIONAL PAST AND CONTEMPORARY FORM

Tailored to the taste of individuals with different preferences, it is their unlimited enthusiasm and passion that made what we do possible. Neutrals and plush fabrics deliver quaint charm to the smartly placed ancient relics. Like the Burmese medicine box, an Andhra beetle leaf box, vintage South-Indian rice spoons and a plethora of handicrafts. “It was about weaving ideas from the present with elements from tradition to create a contemporary home. “



UNITY AND INTIMACY

We've created independent unique areas on the ground floor that are connected by a long corridor, uniting spaces yet maintaining intimacy. The first floor is a private area with a master suite, son's and Kids' rooms. The second floor extends out to a small terrace with a cozy sitting room and a yoga space. The transition of spaces from soft and warm to bold and strong is delivered by the play of sunlight over primary colour undertones. You will find echoes of opulence by the striking use of exotic marbles and the distinct gold finishes. A judicious mix of Indian crafts, rustic mosaics and objects of ethnic roots touches the layer of one's nostalgic pool. Giving rise to a timeless & surprising environment, permeated with lovely pieces of art all around the house.





DETAILS AND DEFINITION

We have integrated floor to ceiling glass walls on the NE side of the house to bathe this home in a sunny, honey glow. The house is designed to give each area focal points and task lighting where required. The lighting is simple and discreet, emphasizing focal points and creating a gallery feeling with narrow beams of light. Also, to help create rooms within a room, we positioned and circuited the recessed down lights where the light is needed rather than just create a grid of them across the entire space. Additionally, the southwest corner of the facade was intentionally kept solid to block the heat during the hottest hours of the day. One of our main goals is to partake on a journey with our clients when designing their spaces. We are thrilled to say it has been successfully achieved.



www.anddesignco.com

SBID Member www.sbid.org

GIESSE LIGHT SRL

Producers and distributors of indoor
and outdoor lamps in treated brass
and stainless steel



TARTARUGA OVALE



TARTARUGA TONDA

CLIPPER



GIESSE LIGHT SRL UNIPERSONALE
PIAZZA VECCHIA FILANDA N.9, 24060 – PREDORE (BG) ITALY

Tel: +39.035 938573 | Fax: +39.035 923721 | Email: info@giesselight.com

www.giesselight.de | www.giesselight.com
www.giesselightshop.com

HIGH QUALITY INTERIOR DECORATIVE LIGHTING



CASADISAGNE is a French manufacturer of high quality interior decorative lightings : table lamps, floor lamps, wall lights, ceiling lights, which was founded in 1997.

Since more than 20 years, we design and manufacture our products in France, in our workshop located in Provence, near Avignon. Our lightings are made in brass, a noble material, and a guaranty of elegance and quality.

Casadisagne combines noble materials and traditional technics to make quality its top priority. Specialized in brass work, the expertise of Casadisagne optimizes the brass qualities, and then allows any creativeness.

The Casadisagne's speciality is handmade patina, slowly revealing all the nuances of brass and in particular the depth of the material. Black or matt gold, patina are obtained through the traditional techniques of oxidation, dyeing and waxing.

Casadisagne style is definitely elegant, refined, contemporary and timeless. The creations are mainly made in-house, in order to give a strong consistency with style and image. Occasionally, some creations are made by external designers.

They have been designed to decorate and lighten with elegance and discretion all kinds of interiors, whether classical, contemporary or modern.

Our broad collections allows us to meet all expectations : lighting an office, a bedroom, an entrance, or screening a living room.



www.casadisagne.com

CASADISAGNE

Made in France



www.casadisagne.com

QUEEN ANNE PROPERTY, **CHISWICK**



This Queen Anne style, grade II listed property was purchased by our Californian clients in 2019. They had fallen in love with the architectural charm of the house, but found that the layout lacked flow and sociability. The interior had previously been stripped of much of its period charm and a key principle of the project was to enhance and reinstate this wherever possible. The property underwent reconfiguration in the master suite on the second floor and ground floor, plus full renovation throughout.



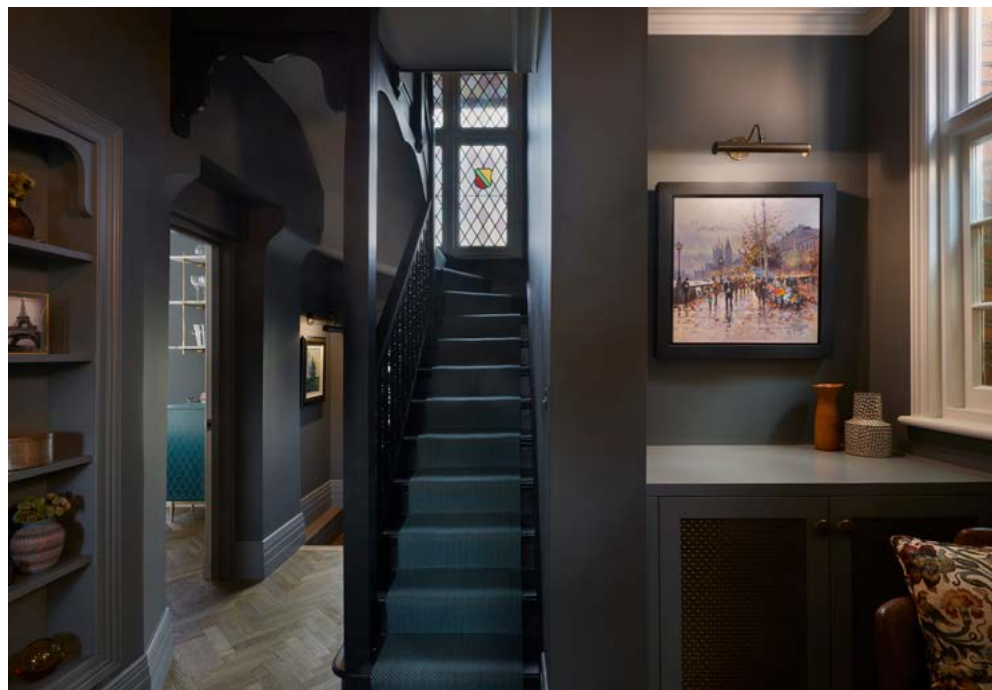


Balance was one of the most important factors to successfully deliver the project. Our clients had fully embraced the quirkiness of their new London abode but their Californian roots also needed to be reflected. Our clients overall style preference was for masculine, dark hues, but it was essential that the home was not void of feminine touches.

The result is a rich and bold colour palette with large expanses of dark greys, blues and blacks, paired with pretty floral wallpapers, delicate fringing and nature inspired soft furnishings.

There is an eclectic feel throughout with the use of mixed metals, traditional fittings and bright artwork. A sense of fun has been injected with colour pops of orange, yellow and turquoise. Texture and pattern are plentiful from reeded glass and bar stool bases, to intricate natural stone and timber flooring formations.

In the downstairs WC we maximised the art deco theme found in various architecture throughout the property. Art Deco is all out there glam so the more pattern and drama we could add the better!





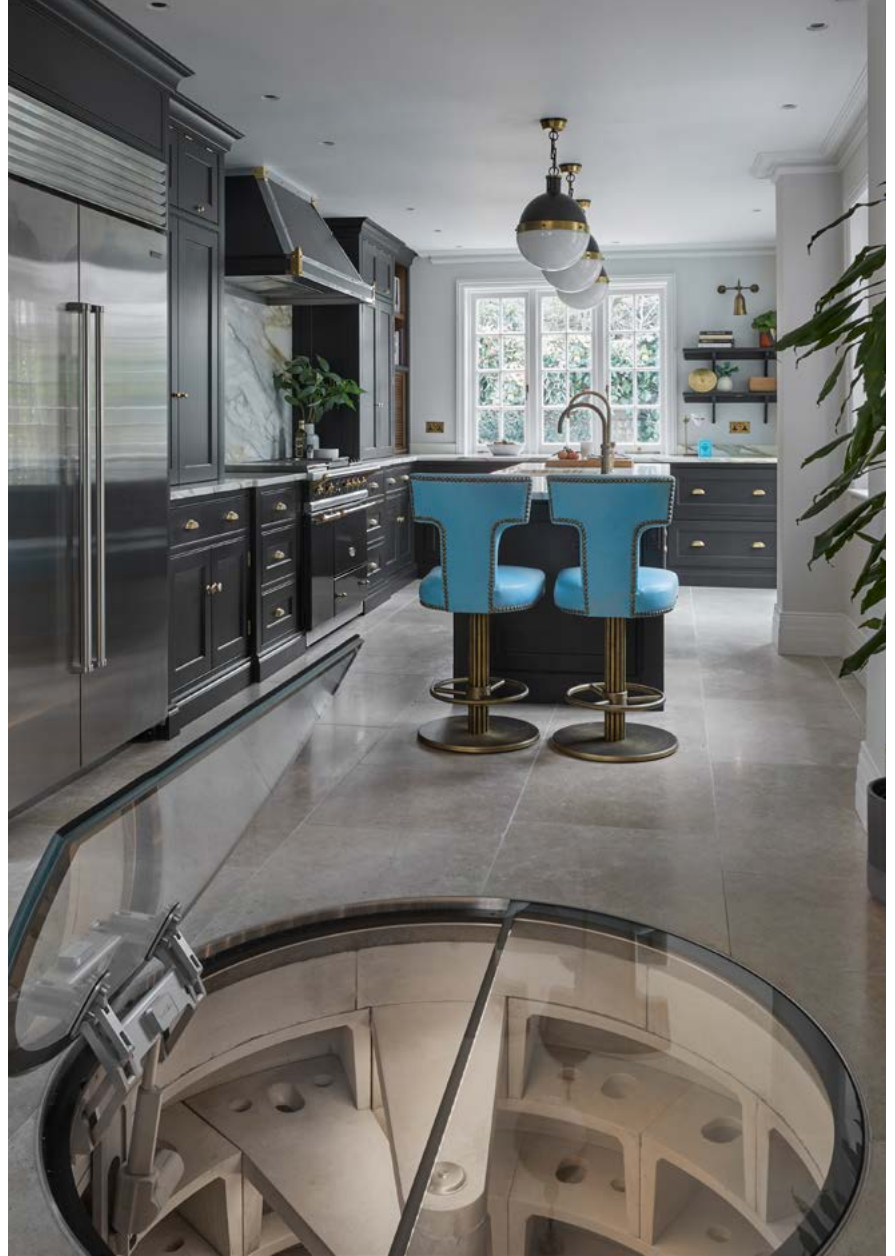
AREAS OF NOTE:

The master suite formed part of a previously completed, modern extension and it felt very “new” and removed from the character found elsewhere in the property. The configuration of the master suite did not use the available space well and felt void of personality. The room was completely reconfigured and more traditional fittings and features added to reflect the general property age. We added the stained glass partition to create subtle separation between the new dressing room and bedroom area.

A partial stud wall was constructed to allow us to create a dramatic focal point with the double vanity, tiles and wallpaper and draw the eye. The functional elements such as the shower and WC sit behind this wall.



A wall was removed between the existing kitchen and an additional reception room as part of the reconfiguration. The kitchen was relocated to the back of this combined space to allow a better connection with the garden and a casual banquette seating area installed. The kitchen is one of the few areas of the house where the walls are neutral, but this is balanced by all black cabinetry, brass and the cheery bespoke leather bar stools. Natural materials were essential in keeping the space understated. Limestone floors and honed, book matched marble pick up the brass tones elsewhere in the room.



The extractor canopy was selected to add an industrial element rather than a more paired back, painted canopy. It also felt quite American which we enjoyed as a nod to the clients origins. We gained extra space with a spiral wine cellar. This allowed our clients to fully indulge in their love of wine and entertaining.



DOORS FIT FOR A **NEW WORLD!**

Silver Oak, one of many new Vicaima finishes



Residents deserve unquestionable comfort and safety in the post pandemic era, as do the professionals responsible for providing it.

To find out more, visit www.vicaima.com

Many things have changed over the past eighteen or more months since our world was turned upside down. However, perhaps its also true to say that some things such as expectations and fundamental living principles have just been re-evaluated and prioritised into what's important for personal well-being. For tenants and residents living in affordable homes; whether rented or part owned, that can often be distilled into a not unreasonable must have list, which includes: fire safety and security, comfortable and durable surroundings, which demonstrate contemporary design and all of which has real environmental credentials.

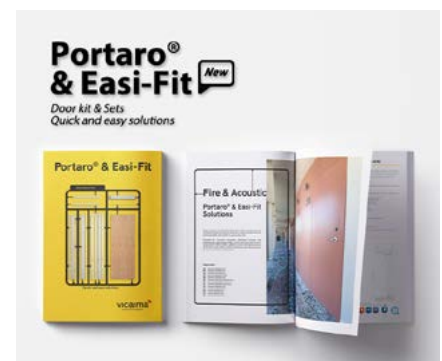
As a key product in every home, interior timber doors should always exemplify these criteria, without short-cuts, compromise, or half-measures. Being a leading manufacturer and supplier to Housing Associations, Local Authorities, social landlords and affordable homes developers, Vicaima door and doorset solutions ensure buyers and specifiers can meet not only tenant expectations, but

also to satisfy their many regulatory and practical concerns at the same time.

Among the many challenges presented in the social housing market and indeed elsewhere, is a lack of skilled labour and for that matter resources in general, when it comes to the installation of doors on site. This is often compounded by the reluctance of many to move beyond the somewhat antiquated 20th century practice of face finishing doors in situ, with its inherent lack of continuity, added expense and drain on time. Fortunately, Vicaima's extensive range of cost effective, designer led, fully finished products alleviate this concern. However, it does not stop there. With the supply of complete doorsets (door and frame), which not only speed up the installation time; but also ensure compliance with appropriate regulations, insuring much of the uncertainty is removed.

Vicaima have always been at the forefront of regulatory and performance measures, with complete tested and certified product

solutions, offering transparency and peace of mind for all. These include Q-Mark authenticated dual scope FD30S/FD60S fire and SBD security doorsets; combining fire and acoustic rated solutions with durability and testing to PAS 24: 2016/BS 6375-2 + 3; all with a 10-year guarantee. What's more, given that all Vicaima products are manufactured to ISO 14001 standards and are FSC certified, you can be sure that the need to protect our planet is as important as the need to provide doors that are fit for affordable living today.



Vicaima Door and Doorset Solutions

ROCKET POCKET DOORS



NOW AVAILABLE IN 70mm OR 90mm POCKET

to match up to your steel or timber stud work making the job easier and quicker to fit.

Specify Rocket Pocket Door frames for an easier, no hassle installation

 **Rocket Door Frames**

TEL 0330 998 0617

EMAIL info@rocketdoorframes.co.uk

WEB www.rocketdoorframes.co.uk





Photo credit © Philippe Garcia

VIVRE LACROIX



Since 2010, the iconic, colorful and baroque universe of the Maison Christian Lacroix celebrates the art of living through creativity and freedom.

Under the creative direction of Sacha Walckhoff, and in collaboration with prestigious designers and manufacturers, the fabric, wallpaper, decorative items and tableware collections are available in a variety of materials and color schemes.

Through their contemporary and dreamlike creations, Christian Lacroix Maison brings imagination and fantasy to any interior.



« Floribunda » and « Flowerworks » cushions © Philippe Garcia

Generous floral sprays also adorn two large velvet pillows, « Flowerworks » and « Fleurs d'Artifices ». « Floribunda » a round cushion decorated with the House's signature chevron, portrays other equally original, sparkling blooms.

The colorama of these imaginary plants offers a multitude of possibilities and the eye is inextricably drawn to the playful « Nature Games » pillow. Another finely embroidered linen pillow, « Jardins des Hespérides », proposes an illuminated flower garden.

The eponymous Merino wool plaid offers welcome comfort to travellers dazzled by this trip through space and time. Finally, the soft velvet cushion « Cosmos Eden » and its myriad of flowers and butterflies perpetuate the euphoric effects of this awakened dream.

SACHA WALCKHOFF, CREATIVE DIRECTOR OF CHRISTIAN LACROIX MAISON

With a background originating from French, Swiss, Slavic and African roots, Sacha Walckhoff's influences are as diverse as his origins. Walckhoff's long association with fashion icon Christian Lacroix began in 1992 and continued for most of the ensuing two decades, with interludes designing menswear, womenswear and accessory collections for Kenzo and Michel Klein along the way.

His tenure as hand-groomed successor to Lacroix culminated with his appointment to the post of Creative Director in 2010, from which he has led an ambitious expansion of the Lacroix brand into new areas.

Photo credit © Philippe Garcia



CHRISTIAN LACROIX AND DESIGNERS GUILD "ATLANTIS"

Christian Lacroix Maison presents "Atlantis", the new capsule collection for autumn-winter 2021: a floral voyage through a world of legends.

Dawn breaks over the island blessed by the Olympian gods, home to gigantic hybrid blooms draped over a spectacular panoramic wallpaper of the same name. The iridescent background echoes the vibrant rays of the sun, blending with wisps of smoke from a recently erupted young volcano.

Designers, Artists, Storytellers.



Virserius Studio is a multidisciplinary team of designers, artists, and storytellers. We draw from our diverse backgrounds in interior architecture, business, fashion, and the fine arts to create unexpected hospitality experiences that bring joy to guests and deliver exceptional results for our clients.

Arizona Biltmore a Waldorf Astoria resort reimagined by Virserius Studio



Interior Architecture + Design

- Conceptual Design
- Schematic Design
- Design Development
- Branding and Positioning
- Interior Lighting
- Furniture, Finishes and Fixture Selections
- New Construction
- Renovations
- Adaptive Reuse
- Historic Restoration
- Construction Documentation

Project Management + Procurement

- Site Selection Consultation
- Programming
- Budgeting and Value Engineering
- Procurement Management
- Project Installation Coordination
- Construction Documentation

Art Consulting + Installations

- Art Concept + Curation
- Multimedia Installations
- Sculptural Installations
- Product Design

NYC / +1 212 337 2195 / hello@virseriusstudio.com
Paris / +33 6 73 87 63 38 / bonjour@virseriusstudio.com

www.virseriusstudio.com



THE RADICAL TRANSFORMATION OF A LONDON HOME



Looking up the void

Name of architect: Robert Hirschfeld Architects

Project name: House + House

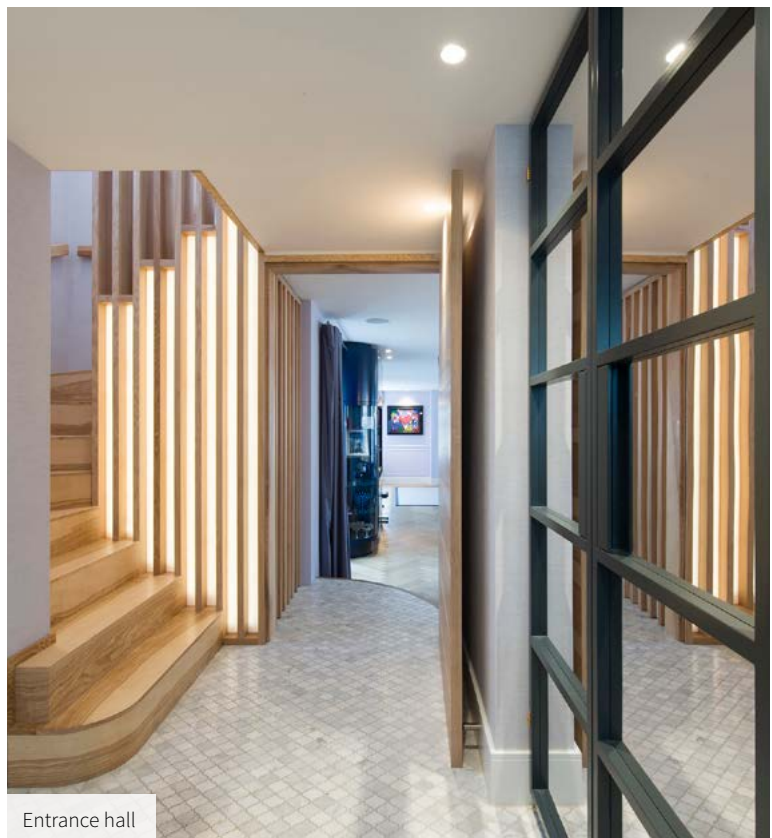
Location: London

No. of bedrooms: 4

Size: 2,500 sqft

RHA has completed the radical transformation of a home in a North-West London conservation area. In a city where land is scarce and house prices are rising 'House + House' offered a solution for densifying low-rise semi-detached residential plots that could no longer be extended individually. By amalgamating two houses into one, these combined dwellings offered the house owners and their family additional living space without the need to relocate from their existing home.

The resulting four-bedroom house retains the existing structural shell of the two properties without impacting the external appearance of the buildings or the inter-relationship of particular aesthetic architectural features in this sensitive conservation area.



Entrance hall



Open plan kitchen dining and living areas

Having achieved the necessary planning consents, RHA then designed the internal arrangements to respond to the clients' central concern of enabling the family to enjoy a sense of 'togetherness' whilst doing different things. The design brief also sought to create a contemporary, yet functional family home that embraced volume, depth and light as the core design principles. It was a pleasure working with our clients, who were open to design innovation and enjoyed being challenged with new ideas.

In response, we encouraged a playful design that allowed for a delightful sequence of internal 'surprises' with a double height dining area at the heart of the home at ground floor level, with a library poised above and visible from below. Hidden doors and alternative routes in and around the various rooms make the house a "paradise for hide-and-seek".

The open plan layout of the principle ground floor rooms gives the house a spacious and airy feel. The seven meter high void between ground and first floor acts as a light well, and accentuates the vertical expanse between the two floors.

Working with the interior designer Studio Suss, we have used a rich palette of colours and textures to create a warm tactile environment. Upon arrival, the selection of finishes, including stone, brass and timber, help to balance the



architectural details to create a warm and inviting entrance hall. The open-plan kitchen / dining / living areas include dark blue painted units with brass hardware, topped with marble worktops that blend harmoniously with lilac wall panels. This provides a sympathetic backdrop to the clients' contemporary furniture and artwork collection. Individual seclusion can be enjoyed in the private study, play room and library.

Bespoke joinery and furniture pieces, designed in collaboration with Fowler & Co interweave throughout all rooms of the house and provide visual continuity in the arrangement of internal spaces.



This is further reflected in the stairwell, the herringbone timber floor surfaces, partitioning and storage designs.

Our solution for the stairwell was to try and incorporate as much as we could into its design and rejecting a conventional approach. We also wanted to try and integrate a door into the same space as well as lighting. We found that by looking at the problem from an alternative angle, and allowing form to follow function, the stairwell joinery could double as a frame for the door from the hall to the living areas as well as conceal lighting within. The result is a dynamic interchange within the hallway and stairwell spaces.



We used beautiful Native Olive Ash hardwood for its vivid grain pattern and colour. The selection of this very characterful timber also added value, not only as a beautiful wood often passed over, but as one that was also affordable.

All these decisions added to the sum of the parts. The beauty derived from its functional simplicity and use of material introduced warmth, honesty and a timeless quality of design. It has been crafted with clean sharp lines, imaginative use of material and finishes, and engineering ingenuity.

The project also improves the energy efficiency and thermal performance of the newly combined property through upgraded insulation and replacement double-glazed timber windows that conform to the conservation area society's strict requirements. Original architectural features such as the dormer windows are also sensitively restored or replaced like for like and damaged render restored. LED lighting and new plumbing with underfloor heating is introduced throughout to add aesthetic uniformity and reduce clutter.

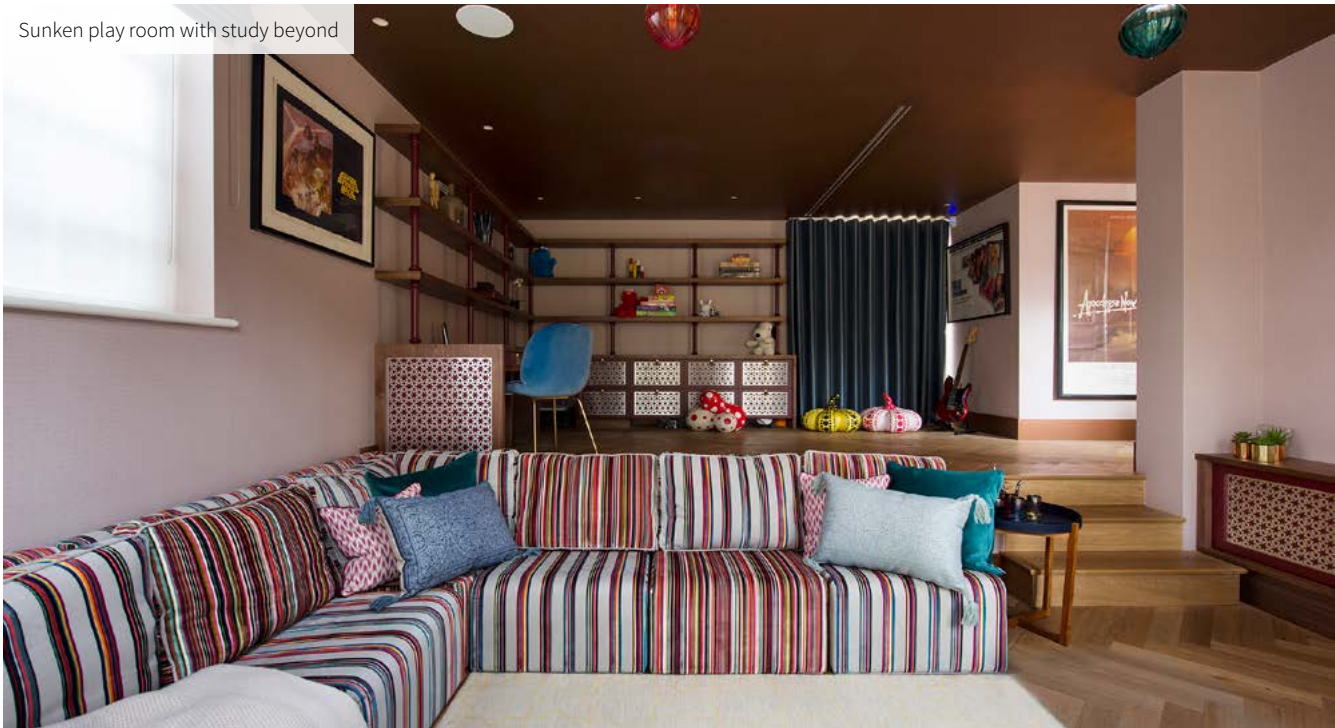


Bar

As well as providing an economical and sustainable solution to create a thermally efficient home, 'House + House' resolves the various ambitions of the client - a desire to stay within the neighbourhood, a contextual response to the site, and an interior that offers a delightful series of spaces for family and friends to share.



Secret jib door open



Sunken play room with study beyond

Robert Hirschfield Architects, 6a Leverton Place, London NW5 2LY
www.roberthirschfield.com | studio@roberthirschfield.com | 020 7435 6039

Photos by Leigh Simpson



ENVIRONMENTALLY FRIENDLY CARPET AND RUGS

Based in the Design Centre within the beautiful Chelsea Harbour, Wool Classics is a unique company who are passionate in all things carpet and rugs. Wool is not only part of their name, it's in their DNA. They are a company built on using the most environmentally friendly materials.

Wool Classics have an extensive bespoke design service which will enable you to create a look which is completely unique to you! If you can imagine it, they can weave it. Whether you are an interior designer, or simply looking to re-carpet your home or even sprucing up your classic car interior, Wool Classics is the perfect company to give you the advice and products you need.

Taking you on the ultimate customer journey, Wool Classics will guide you through each step of your design thoroughly. Starting from the design concept, Wool Classics are able to interpret your design inspiration and bring your

vision to life. Alternatively, they can produce designs from your brief, creating various options for you to choose from. Once the concept has been agreed, Wool Classics are able to go through a magnitude of colour options which will form the basis of your design. For this, they use colour tufts which will enable you to bring any colour tone you can imagine for your carpet or rug. From there, Wool Classics will produce a sample which will bring your visual design concept to reality. Once you are happy with the final design choice, your desired carpet or rug will then be manufactured to lay the foundation of your interior space.

As a company, Wool Classics always strives to use materials which are biodegradable, renewable and organic. Wool, cotton,



bamboo, jute and silk are all materials which are found in Wool Classics carpets and rugs. With this, the company is able to supply products which are both friendly to the environment, your home and your family. Although Wool Classics prides itself on being green, thankfully all products are available in any colour of your imagination!

For the finest in soft flooring, Wool Classics look forward to welcoming you.

For further details please call **020 7349 1560**
Email **press@woolclassics.com**

Visit our showroom at 205 Design Centre East,
Chelsea Harbour, London SW10 0XF



WOOL CLASSICS

LONDON



Quiet in form and near endless in possibilities, Mixu is a sustainable and versatile collection of chairs and stools that can be completely customized to suit the needs of any context, environment, or desire.



Photo credit @SalvaLopez

MIXU

DESIGN IN COLLABORATION WITH GENSLER, 2021

This three-part system of seat, backrest, and base can be personalized with myriad color and texture combinations to create a silhouette whose softly rounded geometric curves and minimal gesture create a perfect canvas for material expression. Playful or sophisticated, demure or vibrant, polished or plush, it's all in the selection—it's all in your mix.

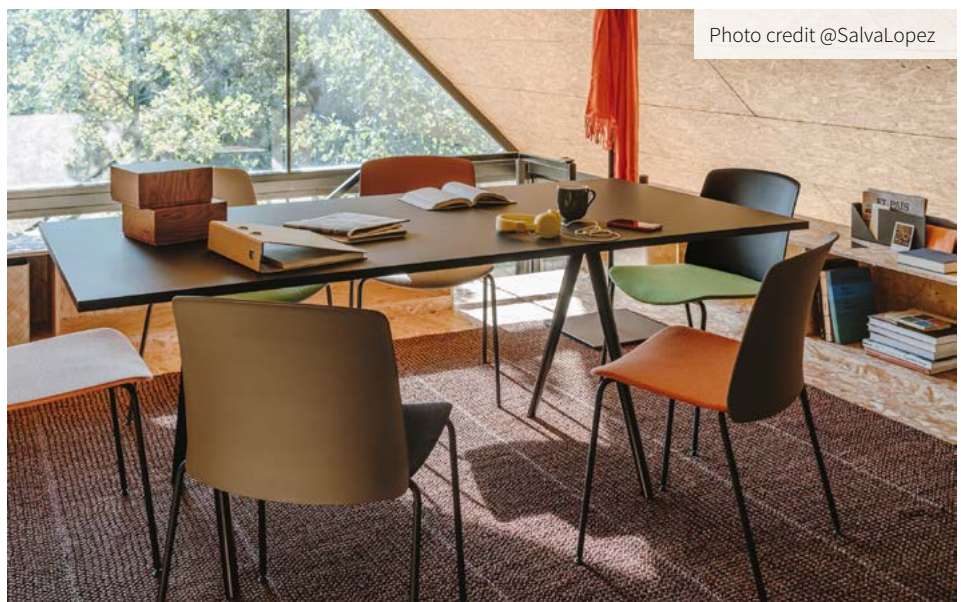


Photo credit @SalvaLopez



Photo credit @Alga Studio

The Mixu system is available in a range of material components for almost limitless design expressions. Seat options are available in post-industrial recycled plastic, FSC certified wood, fabric, or leather finishes. Seats can be combined with backrest options in a plastic, fabric, or leather and four-leg bases in either metal or FSC certified wood. A stool option with the same size seat as the chair offers generous comfort for hospitality or contract use. The Mixu system was designed with sustainability in mind and can be shipped disassembled to reduce its volume and carbon footprint. Mixu can be completely disassembled for correct disposal, making this dynamic collection a materially conscious system throughout its life cycle.



Photo credit @Alga Studio



Photo credit @Alga Studio

The backrest and seat's upholsteries and the polyurethane foam padding are attached with no glue or stapling, allowing for an easy replacement and extending the life of the product. The steel metal base, made with up to 70-percent recycled steel, is finished with a powder-based coat – free of VOC* emissions – so to reduce environmental impact. Gliders are entirely made of recyclable plastic.

B Sir William

Bespoke & antique billiards. Chosen by design.



Bentley Billiards



www.billiards.co.uk | +44 (0) 1264 731 210



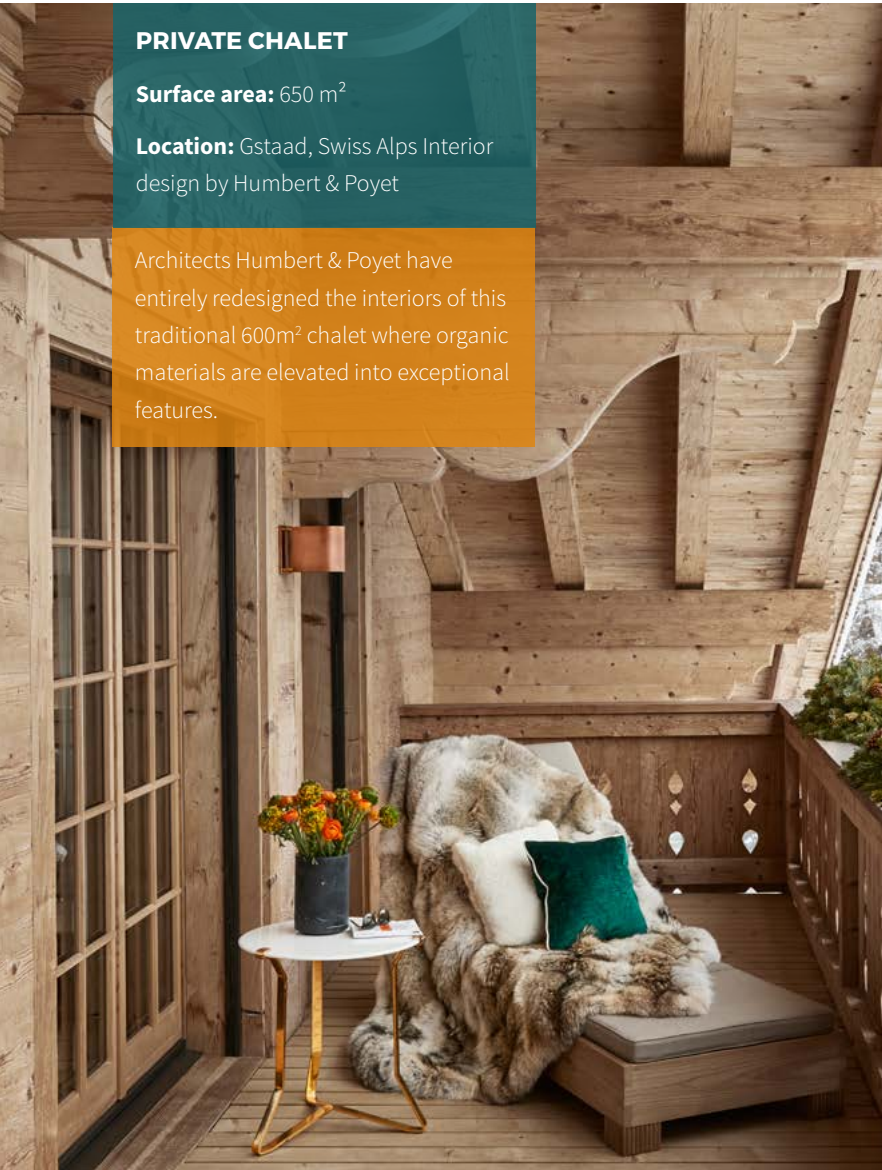
CHALET GSTAAD

PRIVATE CHALET

Surface area: 650 m²

Location: Gstaad, Swiss Alps Interior design by Humbert & Poyet

Architects Humbert & Poyet have entirely redesigned the interiors of this traditional 600m² chalet where organic materials are elevated into exceptional features.



BEDROOMS

Chaise longue: natural teak with fabric from SUNBRELLA, SUTHERLAND

Fur Throw: coyote, NORIKI

Cushion: Cushion in green velvet fabric from CASAMANCE with beige velvet piping from NOBILIS. Small double sided cushion in white alpaca wool from NORIKI

Bedside lamp: by Humbert & Poyet polished brass, black tinted wood and alabaster
Bedside table : by Humbert & Poyet, natural oak with brass

Wall lights: by Humbert & Poyet black tinted wood and alabaster.

Bed: mattress Treca, CVL

Cushions: Large: 'sitatunga' cashmere tartan fabric from LORO PIANA, with a red cashmere lining from LORO PIANA

Rectangular: Green velvet fabric from CASAMANCE with a beige velvet lining from NOBILIS

Bedding: Bedspread in coyote, NORIKI

Poufs: by Humbert & Poyet in white Tibetan lambskin

Outside chairs: Yngve Ekstrom, l'ATELIER 55

Headboard: by Humbert & Poyet in black tinted wood with polished brass inserts



BATHROOMS

Floor: Nero Marquinia marble mosaic and Carrara + black tinted oak parquet flooring
Wall : molded Nero Marquinia marble with a softened finish

Wall lights: by Humbert & Poyet brushed brass light bronze and transparent fluted glass

Towel rail: STERLINGHAM

Bath: York, VOCTORIA & ALBERT

Piping: antique gold finish, LEFROY & BROOKS

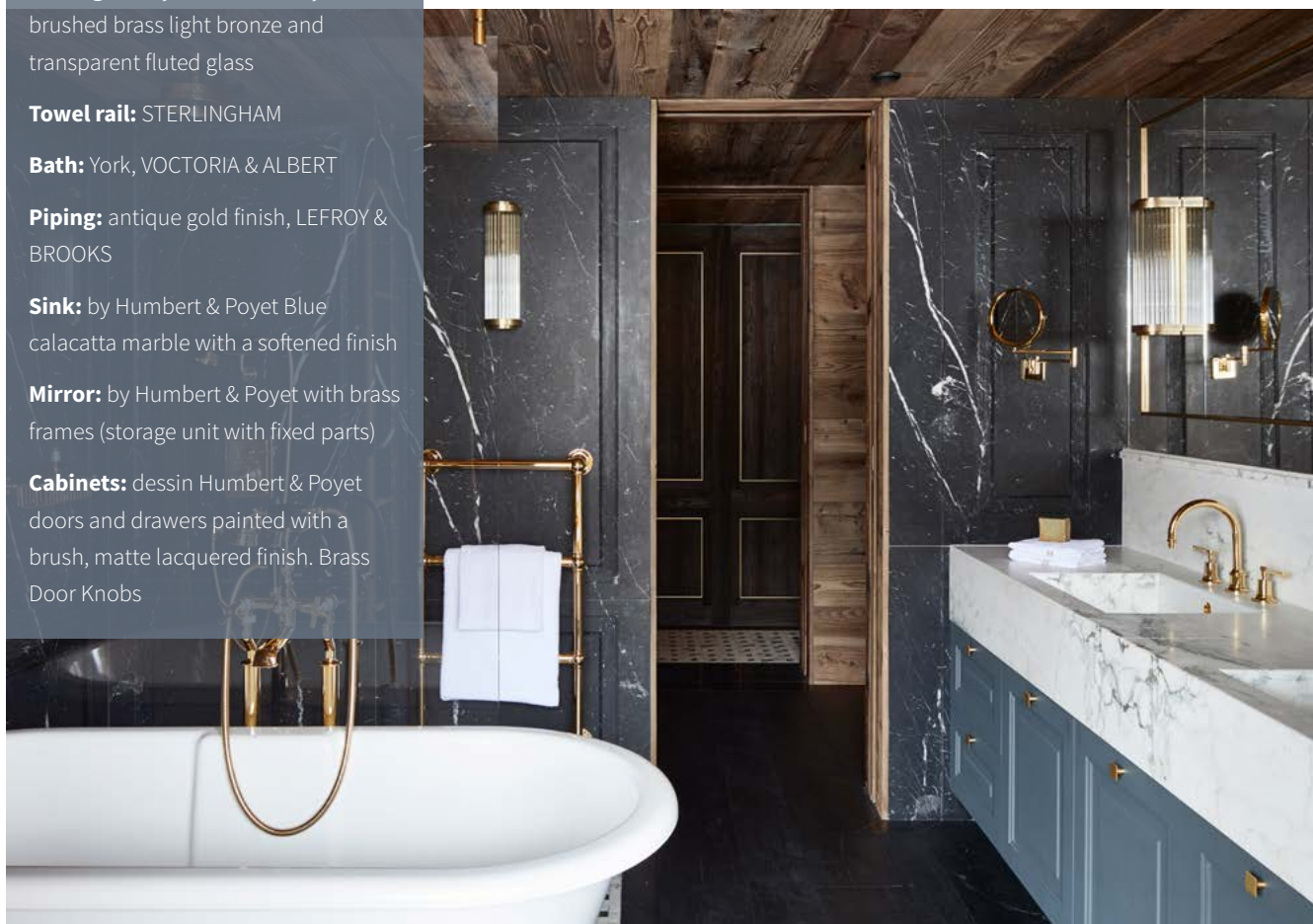
Sink: by Humbert & Poyet Blue calacatta marble with a softened finish

Mirror: by Humbert & Poyet with brass frames (storage unit with fixed parts)

Cabinets: dessin Humbert & Poyet doors and drawers painted with a brush, matte lacquered finish. Brass Door Knobs

For this 3 storey residential project in Gstaad, Emil Humbert and Christophe Poyet were given a carte blanche; the only specification that their client gave was that they had to create a space that was unique down to its smallest details. The two architects removed all imaginative

limitations as they have created a structure of monumental spaces that are a far cry from the standard alpine clichés. Organic materials were transformed into a contemporary yet timeless elements. The result is a juxtaposition of materials that respects the identity of the building.



Ceiling lights: 'Lilly Rail' Adjustable spotlights, antique finish, TEKNA

Cabinet: bespoke, by Humbert & Poyet doors, drawers, wooden shelves matte lacquered with brush from FARROW & BALL

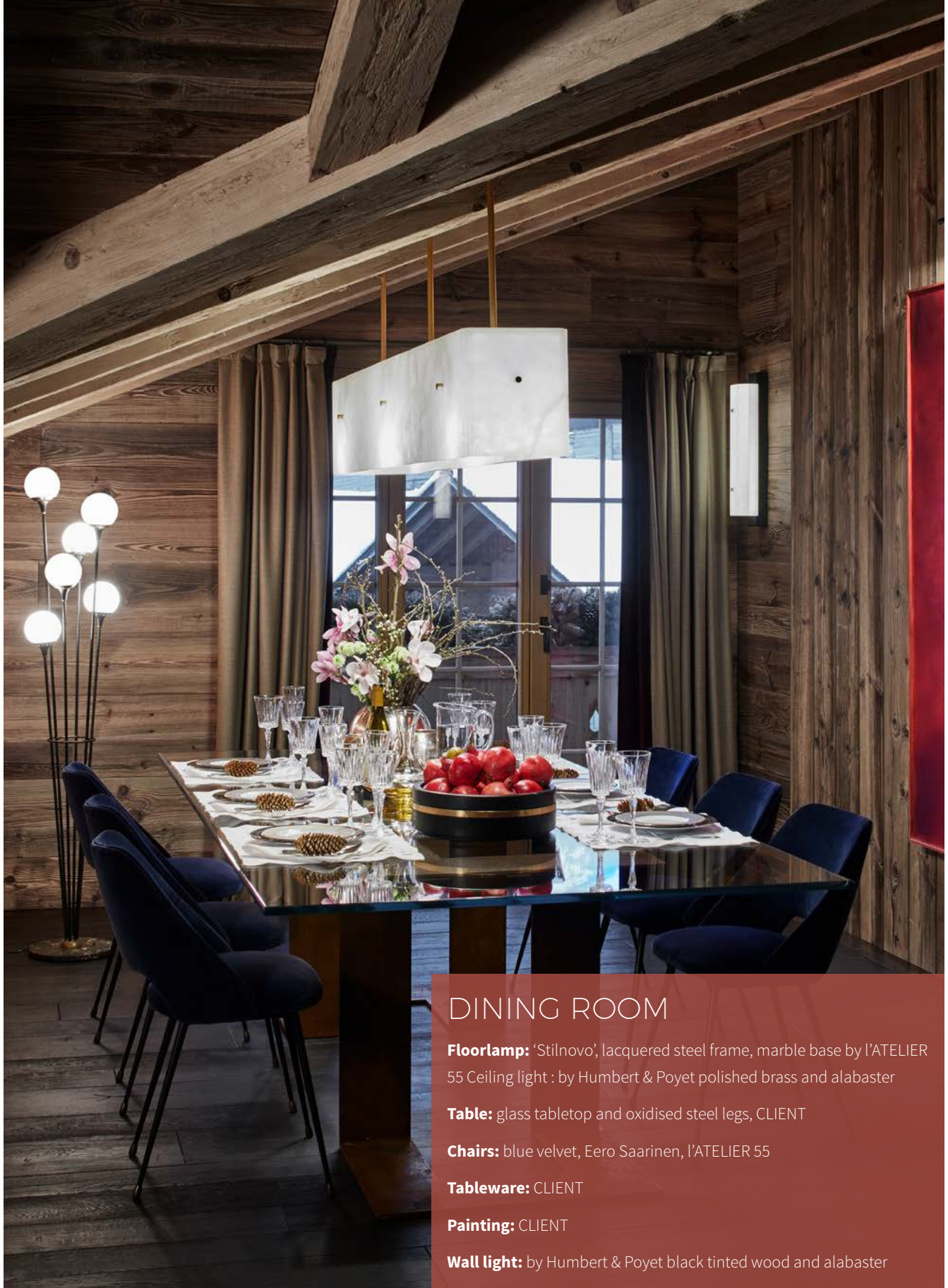
Sink: bespoke, by Humbert & Poyet in Calacatta marble

Piping: aged bronze finish, VOLEVATCH

Floor: blue Hainaut stone with a blue flamed finish with a black Nero Marquinia marble insert

Wall lights: by Humbert & Poyet brushed brass, light bronze and transparent fluted glass

Chair: by Humbert & Poyet cushioned leather



DINING ROOM

Floorlamp: 'Stilnovo', lacquered steel frame, marble base by l'ATELIER
55 Ceiling light : by Humbert & Poyet polished brass and alabaster

Table: glass tabletop and oxidised steel legs, CLIENT

Chairs: blue velvet, Eero Saarinen, l'ATELIER 55

Tableware: CLIENT

Painting: CLIENT

Wall light: by Humbert & Poyet black tinted wood and alabaster

Wood is everywhere and oxymoronically blends with noble metals to form a clean, graphic contrast. The traditional architecture of the chalet is retained in the structure and yet eagerly responds to a more modern design. The reclaimed wood,

recovered from abandoned farms, was sanded and then refreshed. At the heart of the chalet, the staircase is reimagined as a vertical cage in wood and bronze. The staircase is the chief orchestrator between spaces.

The main living room's fireplace is made out of blue stone and natural wood: the sleek style symbolises the harmony between tradition and modernity. The floors are a dark-stained oak which contrasts with the snowy landscape outside.



The warmth of the room is then created by mixing colourful velvet and cashmere fabrics with exceptional furs. The owner's art collection with its dark colours creates a sense of intensity in the space.

The designers also sourced antique furniture to create a rich diversity within the project. The traditional, architectural structure envelopes and emphasises the contemporary interior, and the charming effect is immediate. This is the "art de vivre" in the mountains according to Humbert & Poyet!



Solution Fires is a new generation of highly efficient, authentic and stylish electric fires. The focus of your living space, these fires have been designed and manufactured with optimal controllability of heat, light and sound as the critical elements.



SOLUTION FIRES - **EXCELLENCE IN ELECTRIC**

Controllable from your handset, via Alexa or through the app on your smart phone or watch, you can customise your fireplace to suit your individual taste. No electric fire, currently on the market, has the level of product features or attention to detail that solution fires have as standard, supported by a high level of genuine customer service.

TOP REASONS TO CHOOSE A SOLUTION LUXURY FIRE

- Ultra realistic, contoured flame effect technology
- 'One box solution' for front, corner or panoramic views
- Six preset illumination settings & one custom setting
- Nine independent flame colours with adjustable brightness*
- Nine independent fuel bed colours with adjustable brightness*
- Nine independent downlight colours with pulse effect*
- High quality, hand decorated ceramic log fuel bed
- Crackling fire audio with volume control

- Customisable fuel bed set-up
- Fade in - ON, Fade out - OFF, flame effect feature
- Supplied with remote control as standard
- App control for most smart phones, tablets & watches
- Alexa voice control
- Optional Scene lighting LED kit available
- Optional Anti Reflective Glass available
- Thermostatically controlled with ultra-quiet fan heater
- Seven day, twice daily, program settings
- Fully ErP Compliant & low energy LED flame effect
- Plugs into a standard 13-amp 3 pin socket
- Optional 5 year warranty for added peace of mind

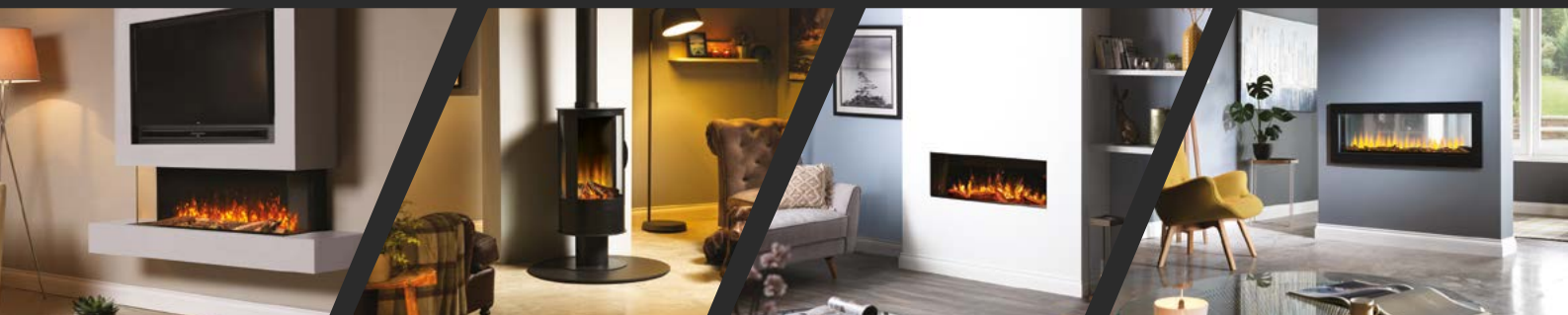
**The above applies to the SLE75, 100, 150 & 200 fires *With use of Solution App*



For more information about our products, please visit: www.solutionfires.co.uk



LUXURY MEDIA WALL ELECTRIC FIRES



BUILT IN FIRES ● STOVE ● TUNNEL ● INSET ● SUITES

INFO@SOLUTIONFIRES.CO.UK

01462 813138

f @SOLUTIONFIRES @

solution
fires
EXCELLENCE IN ELECTRIC

WWW.SOLUTIONFIRES.CO.UK

THE TOP FIVE THINGS TO CONSIDER WHEN CHOOSING A PATIO AWNING

Patio awnings are fast becoming the external shading product of choice within many residential properties as they provide a quick and easy solution to transform any outdoor space. Both practical and stylish, awnings offer instant shade, shelter and privacy and can be designed and built to a bespoke brief.



IS IT FULLY WATERPROOF?

Most high-quality awnings should withstand all types of weather, however, it's how you look after your awning that will determine how it performs and lasts. Choosing a premium fabric that incorporates a self-clean effect coating such as TEXGard® will help deter dirt and water from the surface of your awning, minimising any rippling in the material and preventing the growth of mould and algae.

WILL IT WITHSTAND STRONG WINDS?

Awnings with cable tensioned folding arms will offer the highest wind resistance against wind speeds of up to 30mph. If you've opted for an electric awning, the addition of wind sensors will detect the wind speed and automatically retract an awning should strong winds exceed safe levels.

HOW BIG CAN IT BE?

When deciding on the size of your awning, you will need to consider any obstructions, the position of the sun when it sets and rises, and what the space will primarily be used for. For a small dining table, a projection of 2.5m is adequate, however, for a larger family or for those who like to regularly entertain, a minimum projection of 3m is required.



HOW EASY IS IT TO USE?

A motorised awning will allow you to extend and retract at just the touch of a button, with any add-ons such as lighting and heating operated from the same hand-held remote. The latest bi-directional motors enable the user to view the exact position of the awning via an app on your smartphone and adjust it to suit your needs.

HOW LONG WILL IT TAKE TO INSTALL?

A professional, expert installation is equally as important as the quality of the awning itself. Bespoke awnings are made to measure with specific brackets to suit the property in question, with the installation period ranging from less than half a day to a full day. Attention to detail is key, so finishing touches such as concealed fixing brackets and colour co-ordinated stitching on the fabric will ensure an elegant installation that provides exemplary cover and fully transforms your outdoor space.

www.cbsolarshading.co.uk



CARIBBEAN
BLINDS UK LTD

Sun. Shade. Shelter.



**REAL
HOMES**
★★★★★
**AWARDS 2020
WINNER**
BEST GARDEN BUY

OUTDOOR LIVING POD™ - LOUVERED ROOF |

ALL WEATHER | TERRACE COVERINGS

- Waterproof fabric or aluminium louvered roofs
- Effortless motorised remote control operation
- Wind resistant upto Beaufort 12 (hurricane force)*
- Optional LED lighting & infra-red heating
- 5 year guarantee for peace of mind

Our **innovative retractable awnings and aluminium pergolas** provide flexible shade and shelter, allowing outdoor spaces to be enjoyed come sun, wind, rain or even snow*. Proudly UK manufactured since 1987.



t 0344 800 1947
e info@cbsolarshading.co.uk
w cbsolarshading.co.uk/residential

SHOWSITES IN | SUFFOLK | MIDDLESEX | SURREY

*Wind resistance and snow load based on our louvered roof Outdoor Living Pods™



CUBA - PATIO AWNING |

JURA CONTACTLESS COFFEE VIA SMARTPHONE

JURA brings you state of the art automatic coffee machine operation via your smartphone or tablet.



JURA PROFESSIONAL COFFEE MACHINES

During more than 20 years of developing automatic coffee machines, JURA has come up with many innovative technologies that set new standards. These have been incorporated into the entire range and are now the fundamental ingredients for enjoying the perfect cup of coffee. Each machine contains the wealth of knowledge and experience of their engineers. Functions and components have become standards that will delight you with perfect coffee day-in, day-out, cup after cup.

JURA has a range of Professional coffee machines to cater for the smallest to the largest coffee lounge, hotel restaurant, hospitality venue or events area. Top of the range is the GIGA X8 or X8c available with cool controls, fridges, cashless systems, cup warmers and data communicators. Smart Connect is integrated and suggested daily capacity is 200 cups per day. Still with the GIGA range is the GIGA X3 or X3c which has most of the features and accessories of its larger sibling but a smaller daily capacity at 150 cups per day. The X10 and the X8 are models to suite mid-range venues with daily capacities of up to 80 cups per day. Finally, the smallest in the range are the WE6 and WE8, still packed with features but offering daily capacities of 30 coffees each. As you would expect from JURA UK there are price points and packages available on all JURA Professional machines and, of course, all these machines come complete with Smart Connect and J.O.E. the state of the art JURA Operating Experience.

NOTE - J.O.E. is a registered trademark

With hygiene now being of top priority in coffee preparation in all environments, the JURA Operating Experience brings state of the art coffee machine operation. By simply linking J.O.E to the Smart Connect in your JURA coffee machine via Bluetooth, enjoying the perfect cup of coffee just the way you like it is even easier, and touch free. Using either text or touchscreen, J.O.E is intuitive, convenient and simple, and with free updates, you always have the latest way of operating your JURA automatic speciality coffee machine.

PERSONALISED COFFEE EXPERIENCE

Enjoy a coffee experience tailored to your personal taste. Using a slide control, J.O.E. can make your favourite coffees exactly how you like them. The preferences are stored on your smartphone or tablet. You can even give names to your favourite speciality coffees and assign an image to them.



For sales enquiries: ProfessionalEnquiries@jura.com | w: uk.jura.com

Where versatility, usability and individuality count



X10

Freshly ground, not capsuled

- Customised coffee via 4.3" TFT display thanks to One-Touch function for 31 programmable specialities.
- Professional Aroma Grinder for ideal grinding results over the entire service life
- One-Touch Lungo function for delicious, aromatic barista specialities



Ideal areas of use: In hotel restaurants and bars, barista bars, coffee lounges, events areas, office floors

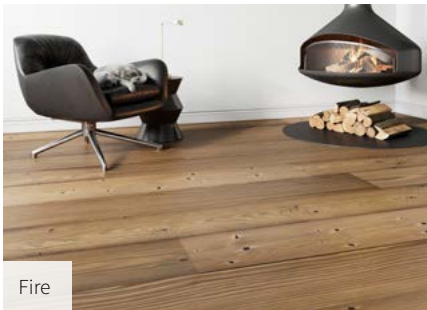
Jura Products Ltd, Vivary Mill, Vivary Way, Colne, Lancashire, BB8 9NW
Tel: 01282 868266 Fax: 01282 863411, ProfessionalEnquiries@jura.com

Recommended maximum daily output: 80 cups

SCANDINAVIAN STYLE - INTRODUCING NEW DOUGLAS FIR BY HAVWOODS

Bring a touch of Scandinavian luxury into interiors this autumn with Douglas Fir. A timeless addition to any design scheme, Havwoods' brand new range joins the Venture Plank collection to provide functional wooden floor solutions with strong visual appeal.

Characterised by its stunning natural beauty, these engineered planks are formed through a time-worn process which accentuates the natural grain – this works by drawing out the colour. Made in Europe, these wide planks will suit a variety of project specifications to present an on-trend Scandinavian surface option.



Fire

Recognised as one of the more abundant and hardwearing of softwoods, this evergreen conifer is highly durable and able to withstand heavy footfall. Furthermore, the planks are compatible with underfloor heating; a popular feature in many contemporary homes.

Available in four distinct colourways there is a plank to suit all interiors. From the pale, milky tones of Snow to the honey-hues of Earth - these light, modern shades pair perfectly with light wood accents, tactile textiles and soft white walls.

For the more earthy schemes homeowners can opt for Wind or Fire, these rustic grade boards exude a raw and dark aesthetic - style alongside leather furnishings, bold paint choice and a wood-burning stove to add texture and create contrast.

Combining up-to-the-minute designs with functional appeal, the new Douglas Fir collection from Havwoods will add instant Scandinavian style to any home.



Wind



Earth



Snow

www.havwoods.com

INTRODUCING THE NEW ULTRAMARINE SURFACE FROM STARON

Inject a pop of vibrant colour into interiors and create a space that makes impact upon entry with renowned solid surface brand, Staron's new Ultramarine hue. Adding depth and dramatic style to kitchens, bathrooms, workspaces, bars and restaurants, the decadently deep blue and on-trend shade is guaranteed to add a stylish touch to spaces wherever it is used.

For a striking look, pair Ultramarine surfaces with a contrasting white surface and gold accessories for a visually appealing aesthetic. For a dramatic effect, ideal for bars and nightclubs, combine with chrome barware for a moody atmosphere designed to attract visitors.

Ideal for projects great or small, Staron's unique process of thermoforming provides homeowners, designers and specifiers with the opportunity to be incredibly creative. The super-malleable award-winning surfaces are an extremely hygienic, durable and practical choice for a multitude of applications.



www.staron.com

Beautiful Designer Ceiling Fans



THE HENLEY FAN COMPANY LTD



01256 636 509
www.henleyfan.com

Think Design
Think Homapal 

DERAiam www.deralam.co.uk T: 01257 478540
E: sales@deralam.co.uk

A PIECE OF SCOTTISH LANDSCAPE HERITAGE, CREATED BY THE MASTERS OF MODERN FURNITURE

‘INSPIRED BY THE RAW BEAUTY OF SUTHERLAND’



<https://hutig.com>
f @hutigfurniture
E: info@hutig.com
T: 07818 205077

SUPREME QUALITY SUSTAINABLE FURNITURE MADE IN THE HIGHLANDS OF SCOTLAND

1

A & A CRACK & SONS LTD

Tanned and finished in Tuscany, Italy, our Classic Croc is a luxurious pure aniline polished leather suitable for upholstery. We searched far and wide to discover an embossment plate that was possible to cover a whole hide, with no repeat pattern! Perfect for those larger panel upholstery jobs. What we were looking for, was a leather specifically for applications where the hide required would present the look and feel of how leather once was. Not over pigmented and not modern looking enough to be confused with the existing everyday offerings that are flooding the market currently. These hides are produced on smaller whole veals, averaging 35 to 40 sqft. Our Classic Croc has a matte appearance with a medium handle and is available in 11 stunning colours. You can purchase just a single hide from our warehouse! Established in 1987, A & A Crack & Sons are one of the leading leather suppliers in the U.K.

A & A Crack & Sons Ltd. Unit 16, Pennard Close, Brackmills Industrial Estate, Northampton NN4 7BE
 Web: www.aacrack.com | Email: info@aacrack.com | Instagram: [@aacrack](https://www.instagram.com/aacrack)



2

AN ECLECTIC RANGE FROM ELSTEAD LIGHTING

Quintessentiale is an eclectic and curated range from Elstead Lighting. Featured is the Skye 6 light cluster pendant which is designed by Californian Lisa McDennon and produced by Hinkley Lighting. Each clear open globe is encircled with a slender ring in a subtle Heritage Brass finish. The opening is off-centre and the globes fall to different lengths that can be adjusted with the cinching ring. There is also a beautiful single pendant in this range which is perfect for a row over a kitchen island, bar or reception desk.

Lisa has also designed several other beautiful statement lighting fixtures. Look out for the organic Laguna chandelier, the Nula 12lt cluster cascade pendant and the architectural Ludlow ranges.

Request a catalogue or see this collection online.

Web: www.elsteadlighting.com
 Email: enquiries@elsteadlighting.com | Tel: +44 (0)1420 82377



3

KAREN NICOL

Karen Nicol is a London based mixed media and embroidery textile designer/artist working in fashion, interiors, and gallery enjoying the versatility and diversity of mixed media textiles in all its forms for over thirty years. She designs with imagery ranging from maps to flowers to birds to abstracts to large three-dimensional animals.

2021 launches a new collection of 'Art for Interiors' and can also provide a bespoke service of embroidery design and production for wallpaper, screens, table linen, bed linen, cushions and upholstery and much more.

Image shown a wallcovering 'The Value not the Cost of Acers' 108cm x 134cm

For further information and images of work please contact Karen Nicol:

Web: www.karennicol.com | Instagram: [@karennicol](https://www.instagram.com/karennicol)



4

SHERRI SPRINGER ART

I have always loved art, music, and nature. A place of calm, driving my creativity as well. Self-taught, I painted a few pieces several years ago. After working in office environments for 20 years, painting took a whole new meaning for me and developed into so much more in 2019 while spending time with my mom during her end stage cancer. Painting calmed my mind and helped me cope with the difficult reality ahead. I truly believe it was a spiritual occurrence as part of a preparation for me, of my mother's passing. It was an interesting and special thing Mom and I shared together, as she also painted - a very talented oil artist for most of her life. She was very happy about me discovering this art outlet and growing in it. It became a passion of mine, and I am glad she got to witness it! It was very clear this was to be a real purpose in my life going forward. I am blessed with some of her talent and it helps me feel her presence, a legacy living on.

Social Media: [@sherrispringerart](https://www.instagram.com/sherrispringerart) | Tel: 334-301-3927 | Santa Rosa Beach, FL 32459

Sherris Springer Art
 PASSION · PURPOSE · PAINTING · PERSONALITY



5

TURNSTYLE DESIGNS

Echo was inspired by the central hub of any kitchen, the cooker. Christina Roberts has created an edge pull which aims to support the look and feel of a British classic, the Range cooker. The Range is known for its strong, timeless industrial qualities and she wanted to create hardware which embodies the strength and reliability, while ensuring a sophisticated look. The most important aspect of the design was to have a deeper leading edge than others on the market, to create a stronger line and distinctive feel.

For balance, she gently rounded and broadened the front section creating a rolled edge, helping to lighten and soften the overall design. Available in both standard and custom lengths. You can view this product along with the entire Turnstyle collection at our fabulous new showroom in Chelsea Harbour, Design Centre East SW10 0XF.

Web: www.turnstyledesigns.com

Email: sales@turnstyledesigns.com | Tel: **+44(0) 1271 325 325**



6

ALBERT EWAN DESIGN

Albert Ewan Design are a specialist salon design and furniture supplier. From full interiors to salons furniture items including colleges and retailers. Our furniture is sourced from our well established dedicated quality manufacturers in Spain, Italy, France, Netherlands and Germany.

We think these are the best available.

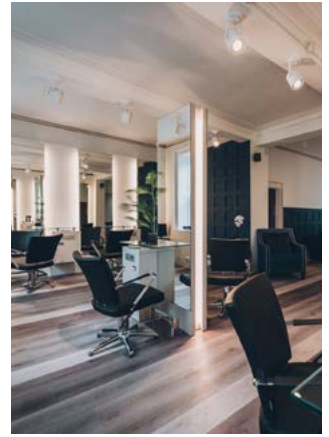
From Mega yachts to large training schools we have the answers.

Space planning being an integral part of getting your salon working efficiently through to photo realistic 3d visuals.

All aspects of the interior are available in a dedicated product range.

Web: www.albertewandesign.com | Tel: **01670 738979**

Email: studio@albertewandesign.com | Social: [@albertewandesign](https://www.instagram.com/albertewandesign)



7

CLAIRE IRELAND CERAMICS

Claire Ireland produces hand-built, elegant, sculptural ceramic forms on different scales. She uses her unique studio location, based in the grounds of a historical Steam Museum to inform her practice, absorbing the industrial heritage surrounding her. She is a dedicated hand builder and revels in how ideas develop out of process, experiments with materials and techniques. An experienced tutor, she specialises in contemporary ways of making. She finds great enjoyment and creative impulse through making collections and arranging man-made and natural forms. The discipline of drawing, her continuous studies, and a renewed passion for printmaking, are all essential components when developing her ideas. The new sculptural pieces form part of her Gradus Collection, which she combines different clay bodies and experimental decorative surface techniques.

Web: www.claireirelandceramics.com

Instagram: [@ceramicsbyclaire](https://www.instagram.com/ceramicsbyclaire)

claire ireland
CERAMICS



Image by Richard Kalina Photography @rpkfoto

8

BESPOKE ARCHITECTURAL EXTERNAL FEATURE CEILING

The client required a gently sloping 1,330m² feature ceiling based upon a 4.5m square grid comprising illuminated conical shaped panels interfacing with porthole glazing in the walkway above to provide a highly flexible use well-lit activity space below the newly built Olympic Steps. D&D were responsible for the entire design, engineering, manufacture and installation of the 268 panel ceiling and its support system. Each conical feature was a substantial 4.5m x 4.5m x 1.7m tall. GRP offered a modular off site lightweight yet robust solution capable of incorporating a 1.5m dia hole matching in with the precast concrete portholes and a band of 12 No premoulded spot lighting recesses. Large scale conical ceiling feature panels would have been difficult to economically construct in other materials. D&D's GRP product delivered a significant weight saving compared to concrete or other stone type solutions.

Web: www.design-and-display.co.uk



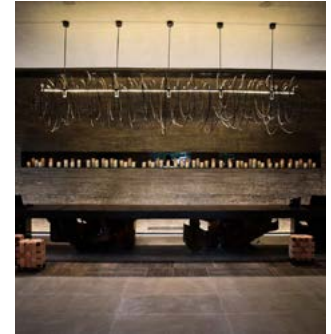
9

GREAT HOSPITALITY THROUGH DESIGN

Bindopor established in 1985, has been designing and manufacturing customized Artwork, Signage & Lighting solutions and complementary products for the Hospitality & Tourism sector, also addressing the Healthcare market and the Art/Museum community.

We have “merged” SIGNS, LIGHTING and ART, offering a complete bespoke Signage, Lighting and Wall Art Decor service program. We provide logistics and professional onsite installation around the world – wherever you want it, whenever you need it.

Bindopor UK, 33 Cavendish Square, London W1G 0PW, United Kingdom
Tel: **+44 (0)203 875 1800**
Bindopor PORTUGAL, PO Box 92, 24994-909 Ourém, Portugal
Tel: **+351 249 540 150**
Web: www.bindopor.com | Email: bindopor@bindopor.com | Instagram: [bindopor_](https://www.instagram.com/bindopor_)



10

HOMAPAL® - LAMINATE SPECIALISTS

Keen to stay ahead of the market, Deralam have sole UK distribution rights for Homapal®, that specialise in laminates of various finishes including real metal surfaces, this leaves an almost unlimited scope for creativity and customisation; meaning that this product has a multitude of applications and finds its way into cruise ships, bars, restaurants, nightclubs and high street retail stores, in fact, any vertical surface that needs to be enhanced. Over the years, hardly any other material has proven its worth in interior design to the extent in which the laminate has done. Looks, feel and function are combined to get the interplay of elements into all-embracing spatial concepts in a way that could not be more natural. Deralam is the ideal choice for Architects, manufacturers and retailers alike.

Head Office, West Coast Park, Bradley Lane, Standish, Wigan, Lancashire WN6 0Y
Southern Office, Units 10-10a, Foster Avenue, Woodside Park, Dunstable, Bedfordshire LU5 5TA | Email: sales@deralam.co.uk | Tel: **01257 478540**



11

OBEETEE: QUALITY HANDMADE RUGS

Located on the banks of the Ganges on the ancient Grand Trunk Route, Obeetee is the largest handmade rug maker in India. At the company's core is a reverence for design excellence, quality craftsmanship, sustainability and social values. Obeetee's artisan weavers use traditional techniques handed down from generation to generation and its hand-crafted creations are sought after by an exclusive international clientele, including royalty, oligarchs and celebrities, as well as grand hotels and government residencies all over the world. Sustainability is integral to Obeetee and it continually reviews and updates its manufacturing processes to ensure a sustainable future by creating minimal impact on the environment. Most recently, Obeetee has collaborated with interior designer, Matthew Williamson, on a sun-steeped collection of hand-tufted and hand-knotted rugs.

Web: www.obeetee.com



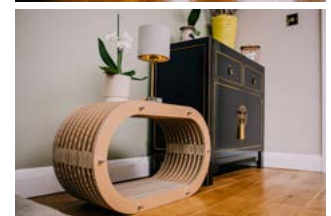
12

DECKLE & CHOP

We create environmentally friendly and fully recyclable products for people that care about the planet and appreciate Great British Design. Using corrugated cardboard as the main substrate, their products are fun and stylish and range from children's play dens to home furnishings and accessories. The business was brought to life in March 2020 after a long-term ambition of creating products out of corrugated cardboard rather than just boxes. The designers at Deckle and Chop have created a collection of unique products that make very little impact on the environment and are all handmade in Derbyshire. All designs can be tailored to meet customers' individual requirements and personalised for any occasion. Delivery within the UK or collection is available upon request.

Visit our social media platforms and online shop to see more.

Web: www.deckleandchop.com | Email: sale@deckleandchop.com
Tel: **T: 01246 860 990**



HARVEY JONES



Specialists in traditionally
handmade, hand-painted kitchens
Request a brochure
trade@harveyjones.com
harveyjones.com
0800 0326 486

An enduring collection that defies rules.
The impossible, made possible.



THE WAVE COLLECTION—limited edition collectible pieces of functional sculpture: *dining tables, consoles, benches, coffee tables, vases, boxes, centrepieces* and *bowls*—carved in rare marble. Impossibly designed by *Staffan Tollgård* and *Filippo Castellani* at TOLLGÅRD—made possible by THE REFINED WORKSHOP.

Now on display at the TOLLGÅRD showrooms in *Belgravia* and *Chelsea Harbour*. Visit TOLLGARD.COM for more.

The
Refined
Workshop
+
TOLLGÅRD