



# One Baltic Square Construction Update

JULY 2022

## JULY 2022

**This month at One Baltic Square, the substation structure has been completed and a number of tasks are near completion.**

Block D show flat, first fix mechanical and electrical, Block E steel frame and internal partitioning to Blocks A and D are all nearly complete. Progression of kitchens, plastering and ceilings have made excellent progress during the period.

### Summary of Works Progressed

- Completion of substation structure
- Near completion of the show flat on Block D
- Near completion of first fix mechanical and electrical, and containment for electrical works to Blocks A and D
- Second fix works now progressing
- Near completion of steel frame on Block E
- Near completion of internal partitioning and boarding to Blocks A and D
- Near completion of framing for combination units within the bathrooms on Blocks A and D
- Progression of metal decking on Block E
- Progression of first and second fix joinery to Blocks A and D
- Progression of wall and ceiling finishes
- Progression of plastering
- Progression of hot water cylinder installations
- Progression of tiling and sanitaryware
- Progression of brick superstructure masonry
- Progression of kitchens
- Commencement of ground floor curtain walling on Block D
- Drainage installation works continue

### Works Anticipated

- Completion of the show flat
- Completion of steelwork superstructure on Block E
- Completion of concrete pour on Block E
- Completion of bathroom unit framing and sanitaryware in Block D
- Near completion of internal stud work partitions and boarding on Block A and D
- Near completion of first fix mechanical and electrical and joinery
- Near completion of hot water cylinder installations
- Near completion of boarding and plastering on Blocks D and A
- Progression of lift installation
- Progression of 2nd fixes on Blocks D and A
- Progression of finishes
- Progression of brickwork
- Progression of kitchens
- Progression of drainage
- Progression of curtain walling



Progression of brickwork on Block D and A



Near completion of Block E steelwork



Progression of ground floor curtain walling



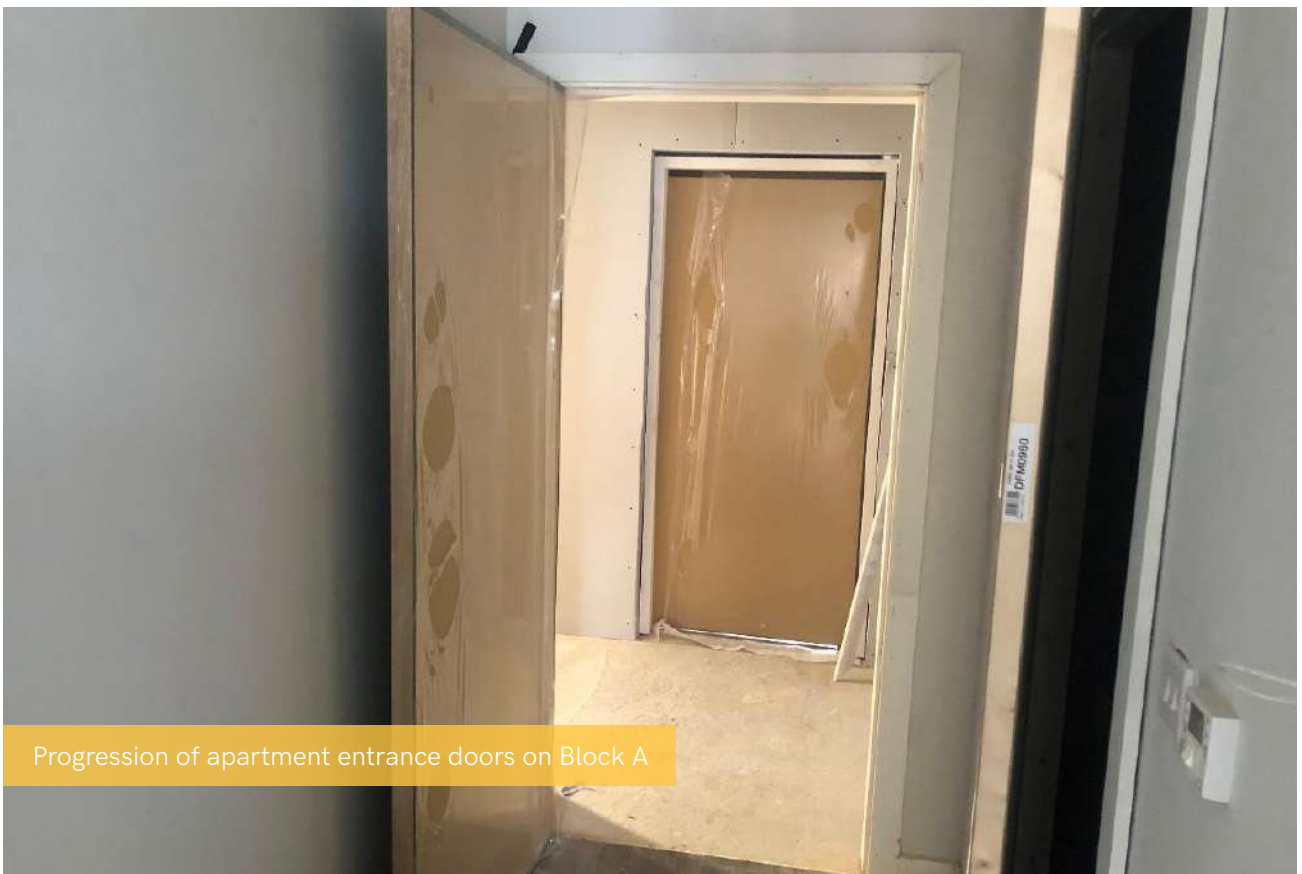
Completion of substation structure



Boarding to Block A stair core



Progression of kitchens and worktops on Block A





Progression of tiling and sanitaryware on Block A



Progression of kerbing and concrete



Additional framing on site



Progression of communal finishes on Block D





Progression of cylinder installation on Block D



External view of Block E steelwork and metal decking