



May/June 2023

ELEMENT - The Quarter Construction Update

May/June 2023

Estimated Completion Date - August/September 2023

In the last month, external works have progressed to the final stages at Element - The Quarter as the onsite team remains on track to meet the estimated completion date. Several key works are set to be finished in the next period and sign off has been confirmed for works including external wall insulation, external windows, and the flat roof covering.

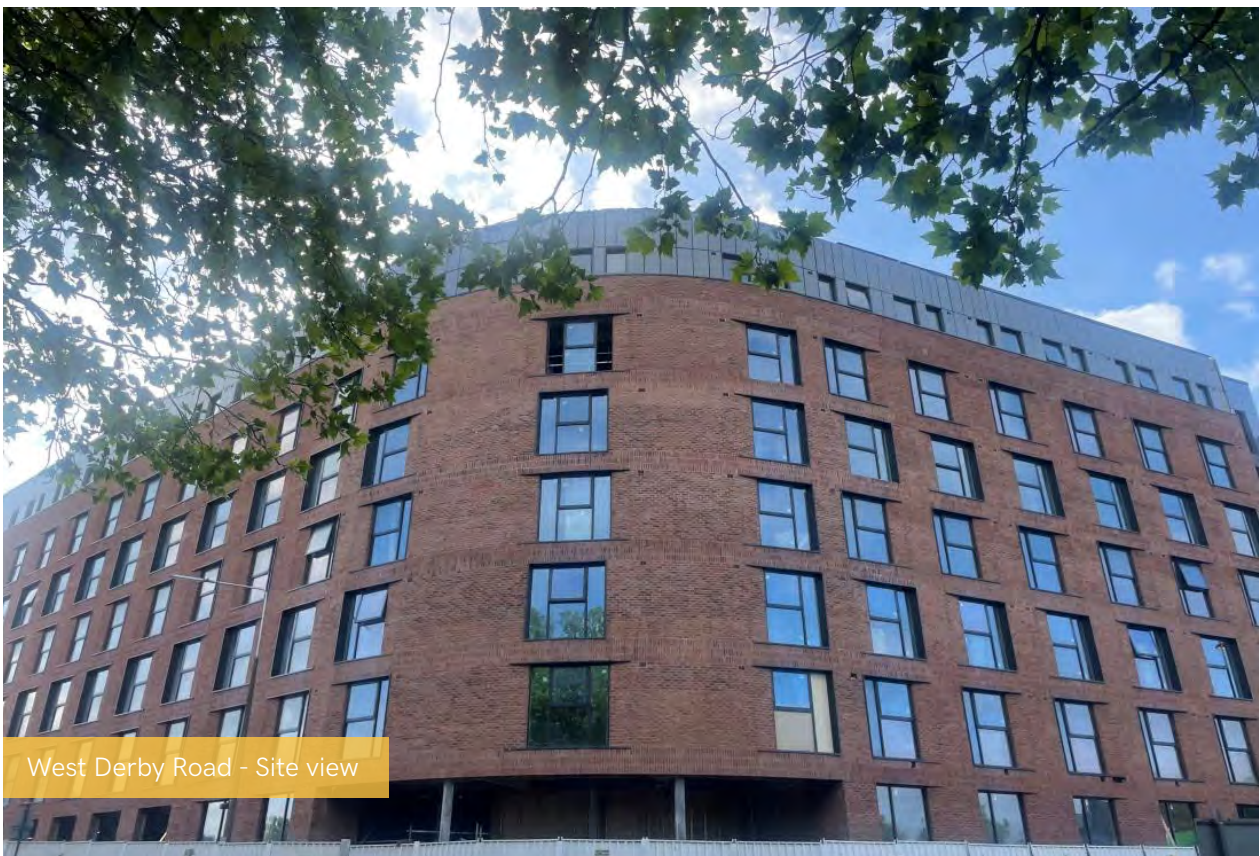
Internally, major progress has been made across the board with plaster finishes, kitchen installations and 2nd fix electrical, heating, and plumbing works now well on their way to completion.

Summary of Works Progressed - Sub-Structure and Super Structure

- Retaining walls, concrete beam foundations - 90% Complete
- Flat roof coverings including balconies - 100% Complete
- External windows/doors & curtain walling - 100% Complete
- External wall insulation & render - 100% Complete

Summary of Works Progressed - Internal Fit Out

- Lift installation - 98% Complete
- Installation of partition walls - 98% Complete
- Apartment ceiling installation - 93% Complete
- Plaster finishes to walls and ceilings - 89% Complete
- 1st fix electrical works - 96% Complete
- 1st fix plumbing and heating works - 97% Complete
- 2nd fix electrical, plumbing and heating works - 60% Complete
- Kitchen units and appliances - 69% Complete
- Doorframes - 89% Complete
- Skirting and architraves - 81% Complete
- Wall and floor tiling - 82% Complete
- Carpet and floor finishes - 83% Complete
- Doors and ironmongery - 82% Complete
- Decorations - 60% Complete
- General fixtures and fittings - 18% Complete







Brunswick Road - Building signage



Exterior Building signage



Exterior Building signage



Student Wing - Cladding installation nearing completion







Commercial Block - Curtain walling



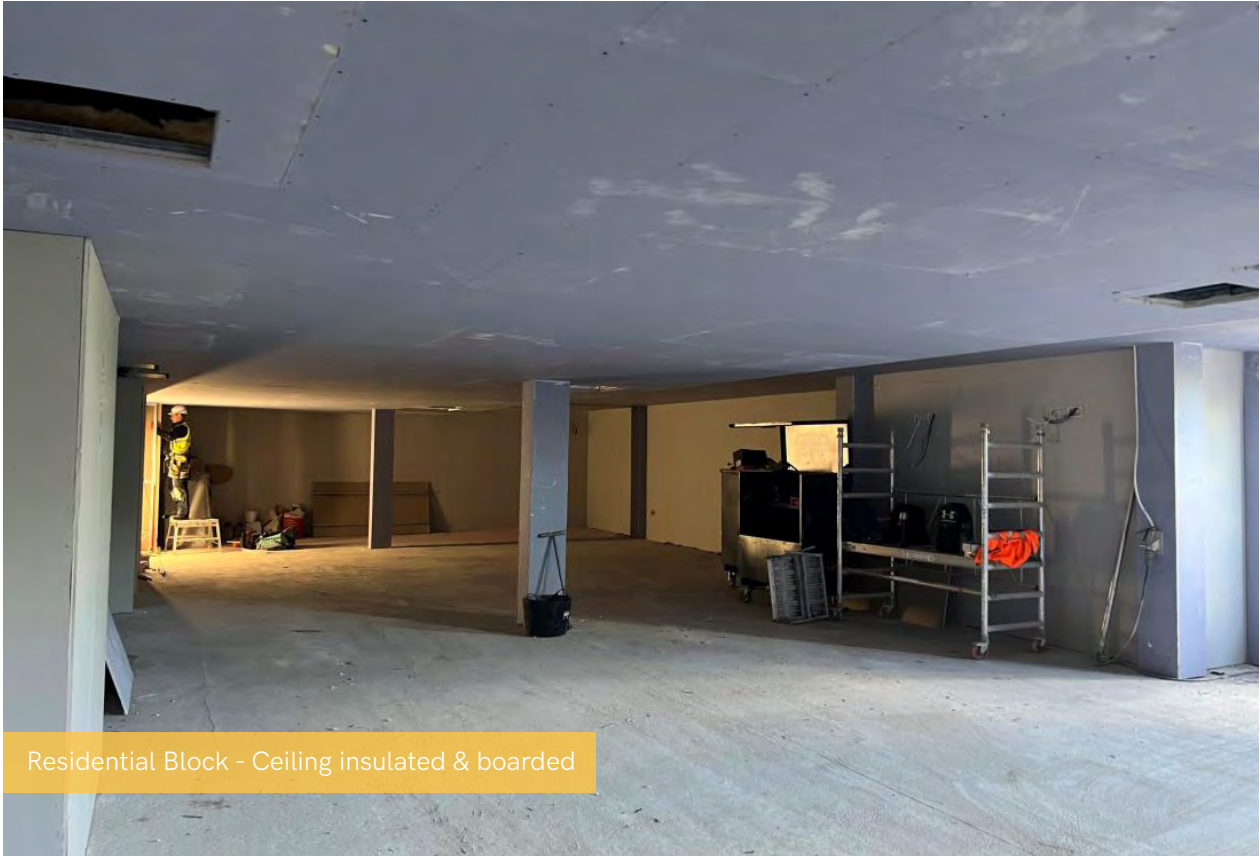
Commercial Block - Curtain walling



Residential Wing - Installation of metal balustrade commenced



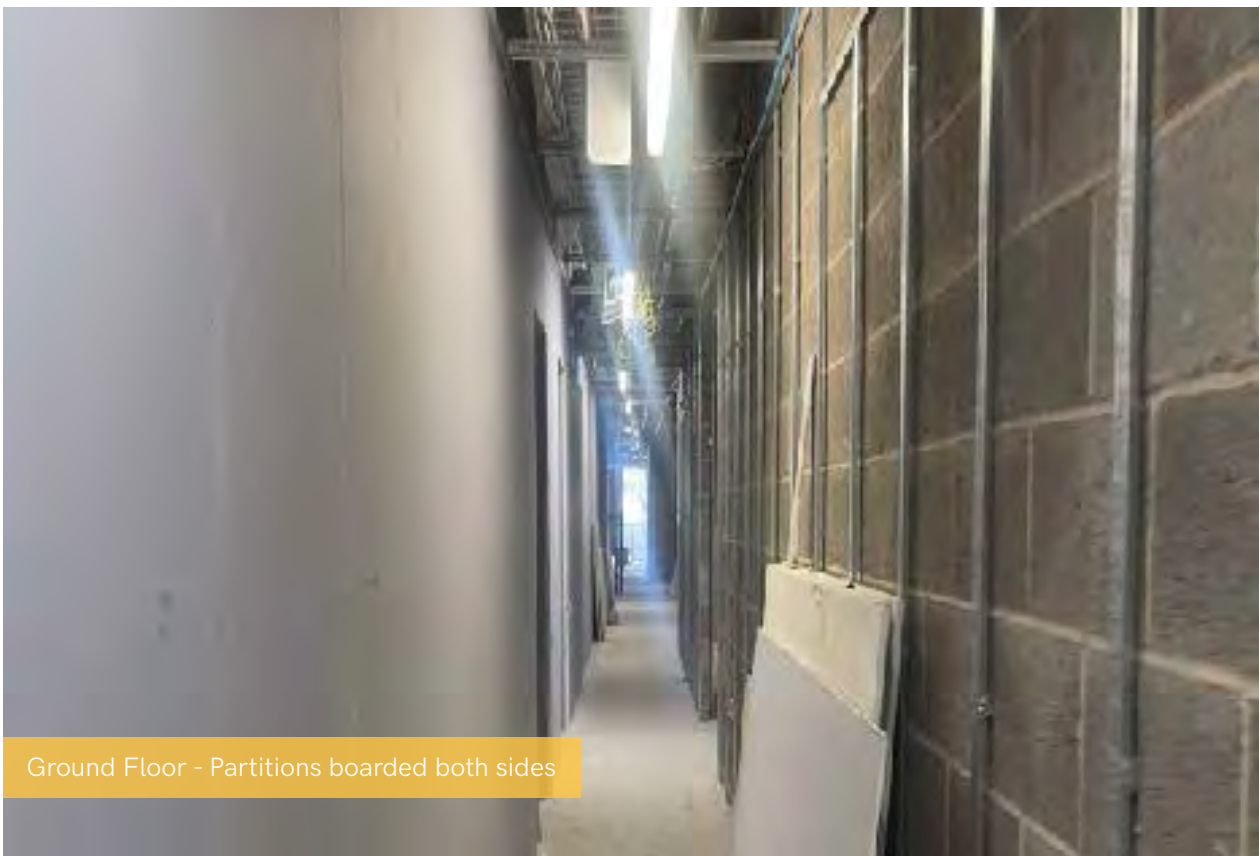
Residential Block - Water tank installed & filled



Residential Block - Ceiling insulated & boarded

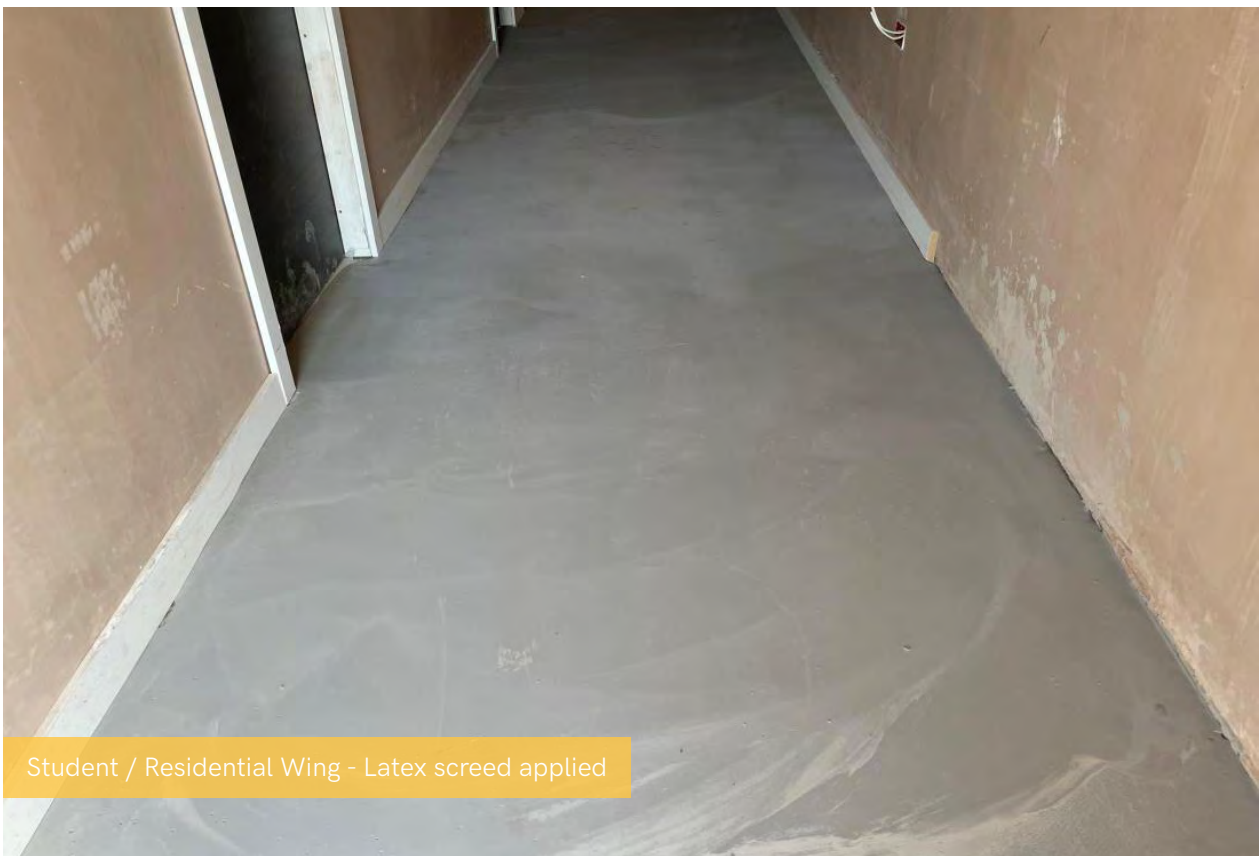


Residential Block - Boarding out of window wall





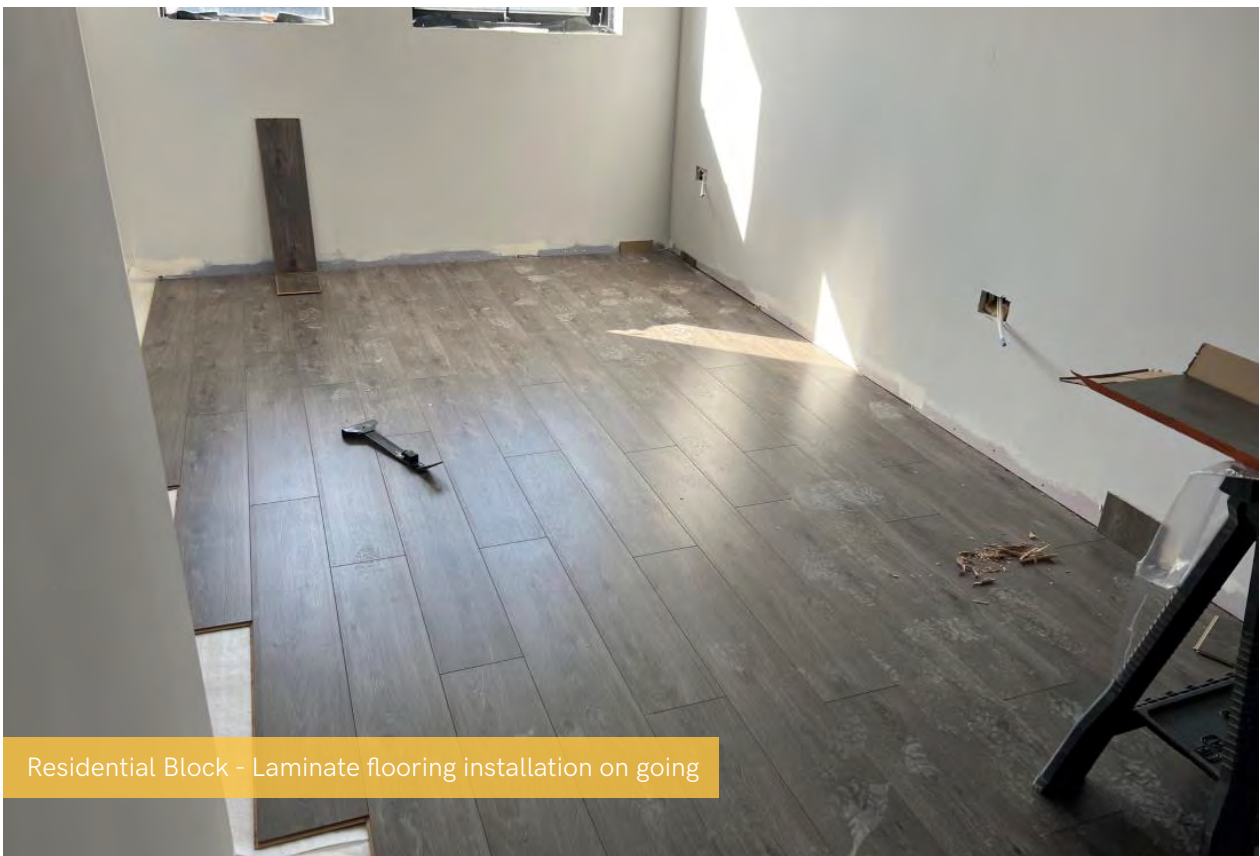
Residential Block - Walls & ceilings plastered



Student / Residential Wing - Latex screed applied



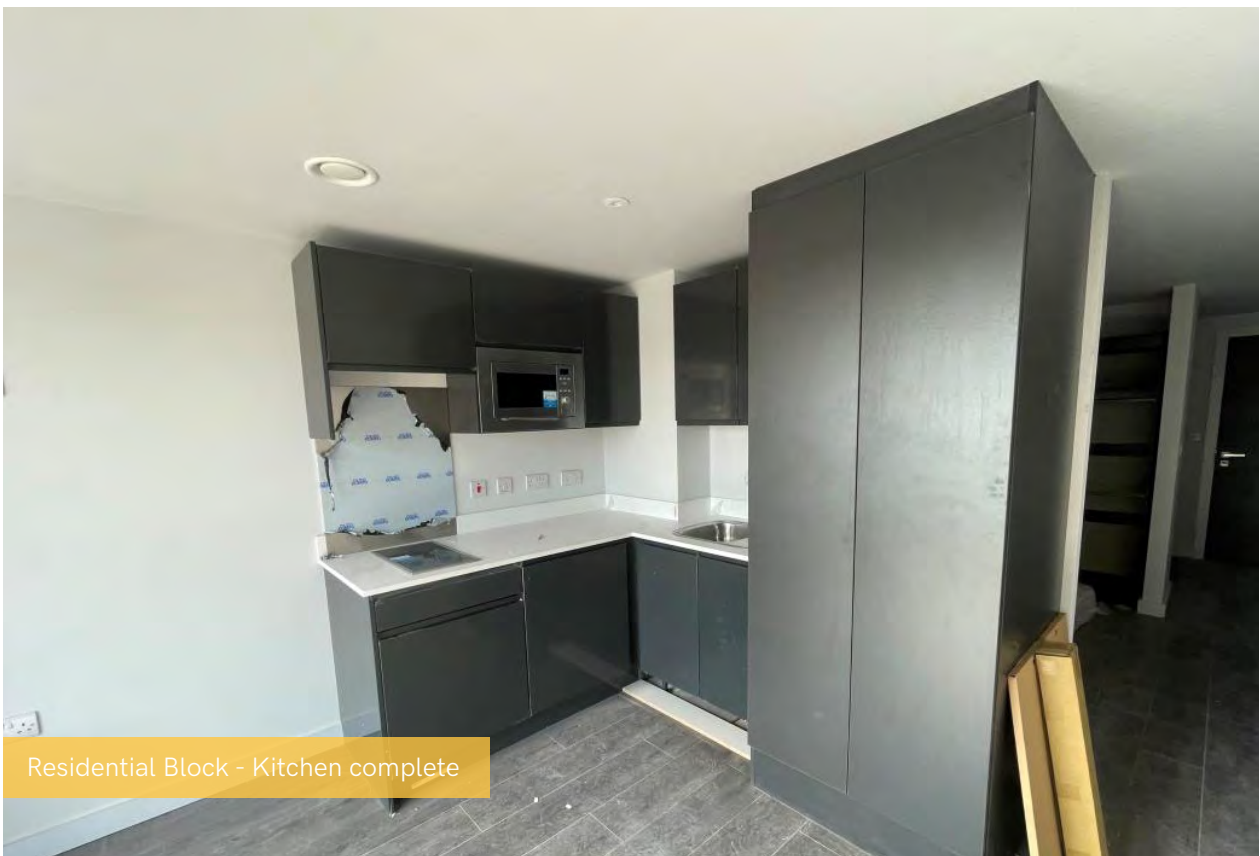
Residential Block - Decoration works on going



Residential Block - Laminate flooring installation on going



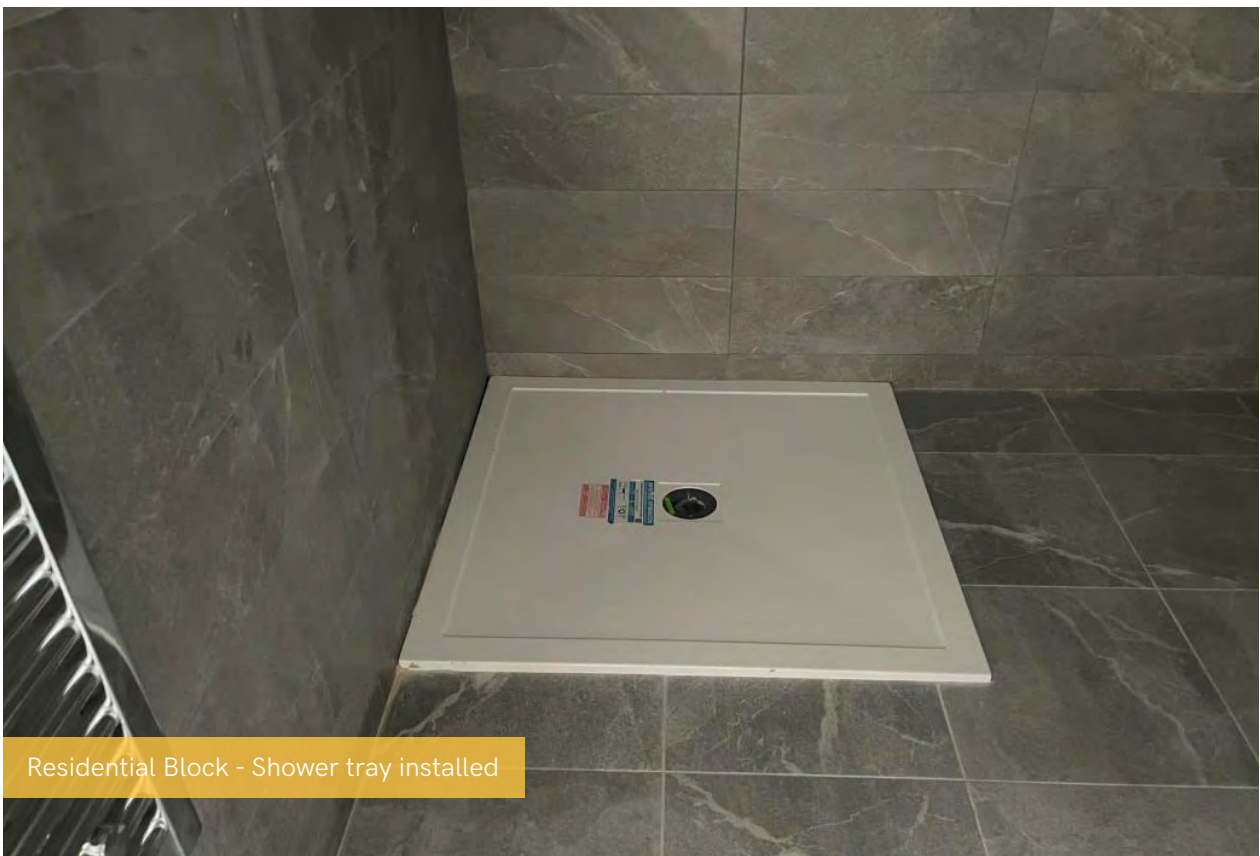
Residential Block - Kitchen complete



Residential Block - Kitchen complete



Residential Block - Floor & wall tiles installed



Residential Block - Shower tray installed