

Design Buy Build

Issue 67 2024 £3.95

www.designbuybuild.co.uk

M A G A Z I N E

Self Builders



Property Developers



Architects



Interior Designers



An impressive yet homely retreat

Treetops is a modern home with traditional elements



Designing a refined sophisticated home

Evoking a characterful Victorian street scene



The Cotswold Company

Three new upholstery designs for Spring 2024

SlideLite 50

New! SlideLite 50 is a quiet and smooth running sliding door system for wardrobe and cupboard doors up to 50kg. To ensure optimum performance the product is available in two kit variants, as well as a fittings kit for use with an additional door.

- **Easy to install**
- **Fitting instructions supplied**
- **2 door kit with a track up to 1800mm**
- **3 door kit with a track up to 2400mm**
- **Dual soft close as standard**
- **No routing or specialist tools required**
- **Perfect for DIY solutions**

ISSUE HIGHLIGHTS

- 4-6 UK Construction Week**
The organisers of the UK's largest event for the built environment, UK Construction Week (UKCW), have announced a host of new features including: a stronger focus on skills, careers and training and interactive demos.
- 14 Treetops House**
Set within a steeply sloping site, surrounded by pine trees, Treetops is a modern home with traditional elements, designed to encompass impressive and grand entertaining spaces whilst also creating a homely, inviting retreat for its owners.
- 18-21 Product Round-Up: Stylish Bathrooms**
The interiors world is set to focus on the bathroom in 2024, as research reveals that interest in 'stylish bathroom ideas' has rocketed.
- 30-31 Lagula Arquitectes**
Five-star Spanish lifestyle resort Camiral Golf & Wellness in the Girona – Costa Brava region (Spain) has now added Selva 25 to its impressive collection of properties for sale.
- 48-49 The Cotswold Company**
The Cotswold Company introduces three new designs to its upholstery collections for Spring 2024, crafted in the UK with over 25 years of expertise.
- 62-63 ConForm Architects**
Long-time followers of the architects' work, the client appointed ConForm to design a refined, sophisticated, and textural home capitalizing on and extending into the large rear garden surrounded by mature trees.
- 68 Smart electric pergola awnings**
Thomas Sanderson, a leading UK window dressing and garage door specialist, has unveiled a new range.

PRODUCTS & SERVICES

- 8-17** Editor's Choice
- 18-27** Bathrooms & Kitchens
- 28-29** Concrete & Stonework
- 30-39** Doors, Windows & Fittings
- 40-41** Floors & Flooring
- 42-47** Heating, Ventilation & Insulation
- 48-63** Interiors & Interior Design
- 64-69** Landscaping & External Works
- 70-73** Lifts, Stairs & Balustrades
- 74-77** Safety, Security & Fire Protection
- 78-82** Tools, Plant & Equipment
- SHOW PREVIEW**
- 4-7** UK Construction Week

COVER PHOTO



30 Lagula Arquitectes

Design Buy Build - www.designbuybuild.co.uk

Editor in Chief
Antony Holter
antony@designbuybuild.co.uk
01304 806 039

Editor
Fiona Meadows
fiona@designbuybuild.co.uk
01304 806 039

Sales Director
Chris Nicholls
chris@designbuybuild.co.uk
0203 907 9161

Studio Designer
Sarah Johnson
sarah.johnson@mhmagazine.co.uk

Business Manager
Josh Holmes
josh@mhmagazine.co.uk

Publishing Director
Martin Holmes
martin@mhmagazine.co.uk
01304 806 039

Editorial Assistant
Tom Moore
tom@designbuybuild.co.uk

Digital Manager
Jamie Bullock
jamie@mhmagazine.co.uk
01227 936971



Published by:
MH Media Global Ltd
18/20 Newington Road
Ramsgate
Kent
CT12 6EE

Tel: 01304 806 039

© MH Media Global



UK'S LARGEST BUILT ENVIRONMENT EVENT MAKES WELCOME RETURN WITH HOST OF NEW FEATURES

The organisers of the UK's largest event for the built environment, UK Construction Week (UKCW), have announced a host of new features including: a stronger focus on skills, careers and training; interactive demos; international pavilions from across the globe; and a charity Gumball Rally across the country.

The multi award-winning show, which returns to London's ExCeL from 7-9 May, attracts building design and construction professionals from across the UK and beyond.

UKCW London will see the debut of a new Live Demo Theatre; Skills and Training Hub; a construction-specific Recruitment Zone; new C-Suite Summits; a 'Gumball Rally' which finishes at the ExCeL; a host of international exhibitors housed in pavilions from India, China, Turkey, Italy, Spain, Germany and France.

UK Construction Week London is once again co-located with Concrete Expo and The Offsite Show, as well as the UK's premier event for the self-build sector, Grand Designs Live.

NEW FEATURES AT UKCW LONDON INCLUDE:

- **Live Demo Theatre** - a showcase of the latest construction products, techniques and innovations from across the world, the Demo Theatre will bring them to life in front of a live audience of industry professionals looking to be ahead of the curve.
- **C-suite Summits** - an exclusive new area for the sector's top decision makers, the C-suite Summits will see top execs offering their invaluable insights and forecasts to their peers. The new zone will also be a top-level networking forum for dialogue and debate.



"The multi award-winning show, which returns to London's ExCeL from 7-9 May, attracts building design and construction professionals from across the UK and beyond."

- The new **Skills and Training Hub** at UKCW London is a first-time collaboration with the CITB (Construction Industry Training Board), which will address the Skills Shortage head-on with a three-day programme featuring a myriad of talks and workshops to support skills development within the industry and ultimately, build better.

While Days 1 and 2 will have a skills/training focus, Day 3 will focus on careers and be aimed predominantly at students. Events and workshops will cover a myriad topics including:

- Future-proofing skills
- The Human influence on Sustainable Organisations
- Innovation and creativity in construction culture
- Apprenticeships and vocational training

- Diversity and inclusion in construction
- Future trends in construction careers
- Another new area at UKCW London will be the **Careers and Recruitment Zone** - created in response to exhibitor and visitor feedback, this will not only be a focal point for all those working in recruitment, or simply looking for that next new role. Visitors will have face to face access to specialist recruiters from the construction sector, with discreet interview rooms allowing candidates to have onsite consultations. Confirmed exhibitors include national accreditation body UKAS (United Kingdom Accreditation Service), Government of Western Australia, Anglia Ruskin University and UCAS (The Universities and Colleges Admissions Service).

- The **WorldSkills BIM challenge** will run across all three days of UKCW London (7-9 May 2024 at ExCeL) and feature Isabelle Barron - who won gold at last year's EuroSkills competition in Gdańsk, Poland - alongside competitors from China, Korea, Hong Kong, France and Ireland, many of whom will be competing in the WorldSkills World Finals in Lyon in September.



- **Construction Sport Gumball Rally** - spearheaded by UKCW regulars Construction Sport, a charity which supports construction workers' mental and physical health through sport, the 'white van' Gumball Rally will see teams of drivers navigate their way across the UK, stopping off at famous infrastructure projects along the way - raising funds along the way. Two rallies will take place in 2024, each in the week prior to the UK Construction Week shows in London (May) and Birmingham (October). More details will follow in the coming months.
- **International Pavilions** - the largest international representation of manufacturers to date at any UK construction event. Businesses from India, China, Turkey, Italy, Spain, Germany and France will take centre stage at UK Construction Week London, bringing together a myriad of innovations from across the world.

Sam Patel, UKCW event director, commented: "Skills development, training and recruitment are all fundamental to the future of the construction sector - and that includes changing perceptions and highlighting the breadth of opportunities available.

"Our increased focus on these areas at UKCW London reflects the need for career advice, training and development that are so vital to both those already working in the sector and those who are looking to begin their careers."

Registration for UKCW London is now live (and free) through the new-look website.

The London show is complemented by its sister event, UKCW Birmingham, which takes place at the NEC from October 1-3.

The NEC was the birthplace of UK Construction Week in 2015 and the trade show has grown to become the UK's largest built environment event. Details on the Birmingham programme of events and speakers will be announced in due course, but exhibition space is already filling up - to enquire for your business, contact Info@ukconstructionweek.com

➡ **To find out more about both shows and to register for UKCW London for free, visit <https://ukcw-london-2024.reg.buzz/cab-pr>**



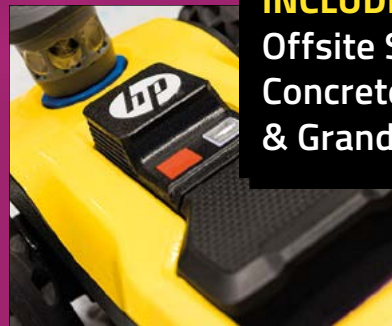
UK Construction Week



LONDON

7-9 MAY 2024 | EXCEL

The UK's Biggest Construction Event



INCLUDES ENTRY TO:
Offsite Show,
Concrete Expo,
& Grand Designs Live

- 300+ EXHIBITORS
- 6,000 PRODUCTS
- NETWORKING EVENTS
- 150+ HOURS OF CPD

#UKCW | @UK_CW

7-9 MAY | EXCEL LONDON
ukconstructionweek.com

**REGISTER
FREE**



Official media partners

CONSTRUCTION BUZZ Construction

Sponsors

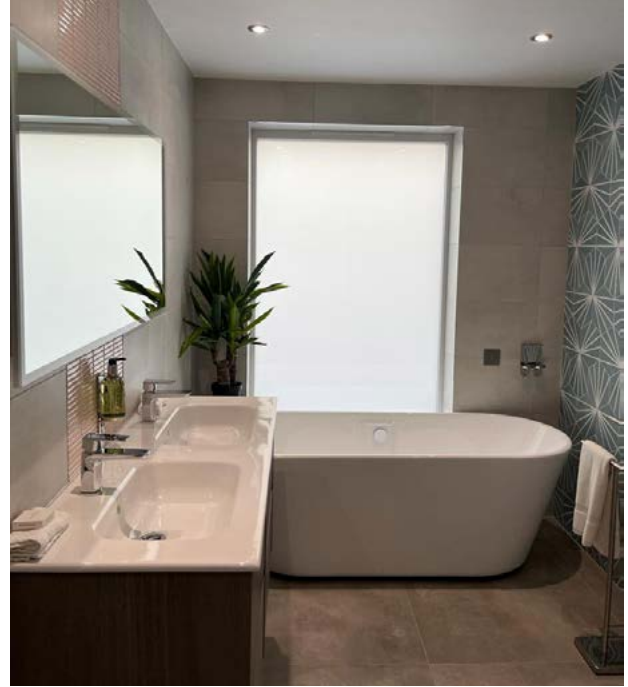


HotelPlanner Barbour ABI MERS



A Media 10 Ltd event

GLASS HOUSES – THE PRACTICAL POSSIBILITIES



THESE DAYS, PEOPLE IN GLASS HOUSES CAN EXPECT PRIVACY, SECURITY AND PRACTICALITY, AS SUSAN SINDEN, COMMERCIAL MANAGER FOR ESG GROUP LTD, EXPLAINS.

The traditional view of a glass house was that of fragility and exposure, but advances in glass processing have brought about huge changes, making significant expanses of glass a practical option in domestic homes, as well as commercial buildings.

Toughened laminated glass, created by laminating together two or more panes of toughened glass with advanced PVB interlayers, has given us a modern building material which is unsurpassed in its versatility and range of applications.

We once kept glazing to a minimum for fear of breakages, but toughened laminated glass has allowed us to construct entire walls and uninterrupted glass vistas which also deliver on durability, safety and security.

Specialist interlayers, bonded to glass panels in the lamination process, have helped to make glass panels larger, lighter and stronger for their relative sizes, and can also be used to introduce sound attenuation, colour and privacy.

One of the great advantages of glass is that you don't have to redecorate it after a few years as its highly resilient surface means that it will stay pristine for many decades. However, that doesn't mean that you

can't add colour - there are several ways to do this. Glass can be back-painted in a solid colour to add a hygienically sealed splash of colour, particularly popular in kitchen splashbacks, as glass is perhaps the best of all wipe-clean surfaces.

We can now add a magnetic coating to the reverse of a pane of glass, so you can also enjoy a perfectly colour-matched magnetic glass wipe board in the kitchen, office or playroom too. We can also add colour using Vanceva coloured interlayers, which allow light to flood through, adding colour from sunlight on neutral interiors. Glass can also be digitally printed with your own preferred colours and designs.

LCD privacy glass is increasingly in demand, especially for creating ensuite bath or shower rooms in tight spaces. This privacy glass is literally switched on and off as required. It relies on a sophisticated LCD interlayer, which becomes transparent when the current is switched on, but reverts to opaque when switched off. Glass such as ESG Switchable™ can also be used to replace curtains or other window treatments, allowing you to enjoy the view when switched on, but giving you complete seclusion when switched off.

For adding practical features such as high security, colour, privacy and even sound attenuation, ironically, people in glass houses now get all the best choices.

www.esg.glass

ESG clearly the best choice for glass



SWITCHABLE GLASS



CLARITY GLASS



BACK PAINTED GLASS

the UK's leading
independent glass
processor

get a quick quote today ...

www.esg.glass t: 01376 520 061 e: sales@esg.glass



THISS STUDIO



The addition of a servery window on the existing rear elevation allows for the seamless transition of food and drink between the kitchen and outdoors. THISS collaborated closely with Jack and Domino on the kitchen choices in particular, resulting in Italian terrazzo worktops and splashbacks sourced by the studio and procured personally by Jack, and cabinetry painted in peach and teal to echo Domino's style. Finishes, electrics and heating throughout the ground floor were also all updated.

As the existing ground level was located higher than the ground floor plane, the garden has remained raised at the rear and was redesigned by Jack and his mother, an experienced landscape gardener. Slate tiles create a sunken patio under the servery window with steps that lead up to granite cobblestone paths that encircle a central lawn and raised beds of perennial shrubs and ornamental grasses.

THISS Studio has prioritized natural, renewable, or recyclable materials throughout the project. In collaboration with Foster Structures, the studio designed a piled foundation as a more lightweight approach, reducing concrete consumption. A FSC-certified sapele wood was selected to support longevity while the choice of aluminum for the canopy surface stems from its sustainability credentials, offering infinite recyclability. Additionally, it was designed as three large jigsaw pieces, and its flat sheet surface covers a substantial area with minimal fixtures, fittings, joints and seams. An existing plum tree was protected and retained as the heart of the garden, carefully wrapped and watered throughout construction.

Sunny Side Up embodies THISS Studio's commitment to responding to each client's vision whilst challenging the conventions of buildings, spaces and materials through an innovative approach to craft. The project combines sustainable design with careful detailing and contemporary construction methods to create a unique space that personifies the essence of the clients.



► Architects: **THISS Studio** - www.thiss.studio

Area: 48 m²

Photographs: **Jae W V Kim**

Manufacturers: **Euval, Foscari, K and D Joinery, Little Greene, Sapele Hardwood**

Structural Engineering: **Foster structures**

Main Contractor: **Fiona, Sail & Sons Constructivists**

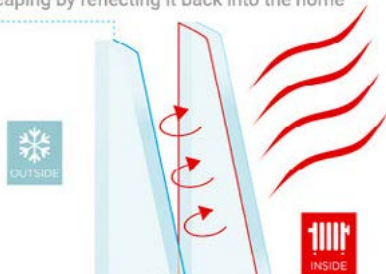
TUFFX glow

The latest innovative technology to take the glazing industry by storm



Heated Glass For Bi-Folding Doors

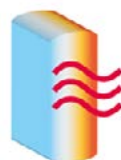
Thermally efficient coating prevents the generated heat escaping by reflecting it back into the home



The integrated and invisible heated glass solution radiates heat into the home

To experience Glow Heated Glass for Bi-Folding Doors, visit our showroom and feel it for yourself.

www.tuffxglass.co.uk



Security – Dwellings

APPROVED DOCUMENT



ASNOW DESIGN & CONSTRUCT



In the design of the Sangde Villa, we faced a two-story building on topography with a beautiful view, which was about 7 meters above the street level. The client requested an expansion of the existing building while minimizing any obstruction to the stunning view. This expansion formed the design concept to include an elevator, covered parking, and a janitor's suite. The expansion began at street level; in this new situation, we encountered a four-story building that looked out of place in the area. To address the project's disproportionality, the building was placed on a solid stone base in harmony with its surroundings.

The sloping roof was removed to reduce the overall volume of the project. Eliminating the sloping roof offered a panoramic view of the surrounding nature. It provided the opportunity to connect the building with northern land at the upstream height via a bridge due to increased light in the northern rooms of the project. The height of the northern courtyard was lowered, and a grid screen was added to expand the terrace.

The main idea for overall building volume is the penetration and horizontal extension of the additional part into internal spaces. The box that has emerged from nature's heart features green-blue tiles, which get their color from the blue sky and green nature. This box welcomes the audience from the outer borders to the inner spaces and creates an opportunity for vertical connection in the project. In completing the final idea, the grid system of beams and columns on the project's façade can beautifully frame the surrounding views. This porous grid, a shell, covers the entire building mass. A cover that delicately integrates the new cube into the existing building.

The project's physical layout prioritizes public space views and is divided into four levels. The first level includes a parking area and a service box equipped with an elevator. The second level houses the

janitor's suite, engine room, and another service box with an elevator. The third level comprises bedrooms, a living room, a service box with public and shower facilities, a dressing room, stairs, and an elevator. The fourth level features a reception and dining room, kitchen, terrace, and another service box with public and dressing facilities, a stairwell, and an elevator.

► Architects: **AsNow Design & Construct**
 Photographs: **Nimkat Studio** -
www.nimkatstudio.com



ADVANCED PROVIDES FIRE PROTECTION TO 5 ALDERMANBURY SQUARE IN LONDON



Fire protection solutions manufacturer, Advanced, has supplied intelligent fire panels to 5 Aldermanbury Square, London, as part of a major refurbishment.

Advanced's high-performance, fault-tolerant MxPro 5 analogue addressable fire panels are providing industry-leading protection to all areas of the 22-storey building.

5 Aldermanbury Square is located in the City of London with the Eric Parry designed landmark delivering exceptional views across the London skyline. Fire safety and security specialists, Pacific Security Systems Ltd, was contracted to undertake the upgrade of the building's current Advanced fire panel network. The existing system was an Advanced MxPro 4 so migrating the system over to new MxPro 5 panels was the obvious solution due to the useful backward compatibility. Since all works had to be completed overnight to ensure the system was fully operational during the day, this compatibility proved essential.

Pacific Security Systems was involved in the design, installation and commissioning of the fire system. 12 MxPro 5 panels were installed along with an Advanced graphics system and a two-stage staff alarm for false alarm management.

Advanced's special build service was also able to design and build a bespoke floor-standing double annunciator that sits on the network via the PENN network device and provides: zonal indication; sounder control; damper status and control; fire phone control; and sprinkler and wet riser indication.

The Advanced system is linked to over 3,000 devices including access control systems, dampers, BMS and plant shutdowns. The system uses Apollo protocol and Discovery optical smoke detectors are installed throughout.

Kirk Short, Director of Pacific Security Systems Ltd, said "Advanced's ability to provide a full package of panels, graphics and special-build service is why we have been specifying and installing their equipment for over 10 years. The MxPro 5 panels provide a powerful platform, comprehensive cause and effect functions, fast network and user-friendly controls and were the ideal solution for 5 Aldermanbury Square. Their backwards compatibility enabled us to upgrade the system overnight while maintaining essential fire protection throughout the refurbishment - no easy feat!"

Matthew Jones, Head of Sales for UK and Ireland at Advanced, said: "We are delighted that Advanced's fire panels are providing essential fire protection to the RIBA-award winning 5 Aldermanbury Square. Our MxPro 5 panels are designed to make life as easy as possible, delivering robust protection that offers real peace of mind, all backed up by our highly rated technical support."

As a world leader in the development and manufacture of intelligent fire systems, Advanced products are specified in locations around the world, from single-panel installations to large, multi-site networks.

The Advanced portfolio includes complete fire detection systems, multiprotocol fire panels, extinguishing control, false alarm management and reduction systems as well as emergency lighting.

► **For further information on Advanced:**
Tel: 0345 894 7000 or visit: www.advancedco.com

TREETOPS HOUSE



Set within a steeply sloping site, surrounded by pine trees, Treetops is a modern home with traditional elements, designed to encompass impressive and grand entertaining spaces whilst also creating a homely, inviting retreat for its owners.

The design responds to the extraordinary topography of the site, with the rear forming a series of tiered terraces, louvers, and balconies that project into the treetops. The layering of elevations adds depth and animation, whilst the warm textures of buff brick and rich iroko timber adorning the façade allow the building to blend into its wild backdrop.

Inside, spaces range from the expansive kitchen, dining, and entertaining area, with double-height glazing drawing the eye out to the panoramic woodland views, to cozy sunken lounges and

a timber-clad meditation room and study. Maintaining a connection with the outside was another key element of the brief.

Top-floor bedrooms nestled under the floating roof canopy provide beautiful outlooks and the spa leads directly onto a rear terrace, with the swimming pool and tennis court beyond.

► **Architects: OB Architecture**

Area: 704 m²

Photographers: Brett Charles Photography

Manufacturers: Alcoglass, Botley Roofing and GSL Southern, C.P. Hart, Plum, Railings London, Roman

Pools, Smart SI, Urban Front

Main Contractor: Grover Building Services

Structural Engineer: Marbas



BELISHA BEACONS – MADE IN THE UK

Our reliable LED Belisha Beacons - standard column AmberGLO8 and super bright illuminated column version - OlympiadIPB are made by us to Highways specification in the UK. We also supply our LED Beacons - in BC22 and pre-wired versions, Lumos4 Crossing Spotlights, Courtesy Shields and more as retro fit spares.

We're certified ISO 9001:2015 for Quality Management, so you can be confident that both the service and product you receive is top quality. We also know that when things go wrong you need to trust your supplier - we won't leave you high and dry or ignore your calls!

We're there when you need us. We've been manufacturing since 1982 and now export to our Belisha Beacons to various locations across the world so if your project is overseas, we can even deliver them there for you!

We also make Feeder Pillars in steel and can also supply GRP for Highways & Street Lighting, EV Car Charging, Power Distribution Pillars for Events, Outdoor Markets and for Leisure & Sports Facilities, and Car Parks too. We work hard to get you the right product at the right price and on time.

See www.fisherandcompany.co.uk to view our product ranges. For more information or to get a quote for your latest project please contact our friendly, helpful Sales Team on 0333 666 2122 or email info@fisherandcompany.co.uk

BELISHA & REFUGE Pedestrian Crossing Equipment



www.fisherandcompany.co.uk

CALL OUR FRIENDLY SALES
TEAM NOW FOR A QUOTE:
0333 666 2122



0800 7833 228 sales@fireretardantuk.com
fireretardantuk.com
HR PROF is manufactured and approved to ISO 9001-2008

HR PROF THE ECO-FRIENDLY FIRE RETARDANT

- Water based - does not leach
- Allows wood to breathe naturally
- Internal / External application
- Colourless - Odourless
- EN 13501 – 1
- EN 16755 (EXT1) according to EN 927-6
- Euroclass B-s1-d0
- Non Toxic - No Solvents
- BS 476 part 6 & BS 476 part 7
- BM TRADA ISO 9001 Certificate
- Meets the **highest** EU standards



Classification Reports & Certificates: Pine, Spruce, Scots Larch, Siberian Larch, Western Red Cedar, Oak, Thermowood, Birch, Birch Ply, and others, both Internal and External.



www.fireretardantuk.com
0800 7833 228 sales@fireretardantuk.com



◀ SIP design & Manufacture

◀ Full house kits

◀ Extension kits

Sipco have successfully completed over 200 projects to date. We can provide references on our work and welcome potential clients to visit our production facility to discuss their requirements with our technical team.

◀ Contact Information

please visit our website
www.thesipcompany.com
or alternatively email
info@thesipcompany.com
0151 424 5346



HALEBROWN ARCHITECTS



Hale Brown Architects were asked to design a 4no. bedroom family home on a farmland site, situated within the Green Belt and on the edge of an Area of Outstanding Natural Beauty in Surrey.

The site was occupied by three, windowless timber-framed barns arranged in a courtyard formation varying from approximately 100 to 300 years old. Having been extensively altered and adapted during their lifetime, the barns had come to the end of their serviceable use as part of the ongoing farm operations. The client brief was therefore to convert the barns into a private house, that complemented its unique rural setting and to take advantage of the stunning countryside views.

Due to significant structural issues and after extensive discussions with the local planning authority, it was agreed the barns would have to be reconstructed, rather than refurbished.

This reconstruction has allowed for modern construction methods and improved envelope build-ups to be utilised, resulting in a significantly better performing building envelope, which will have lower CO2 emissions over its life span.

Underfloor heating fed by an air source heat pump and mechanical ventilation system with heat recovery also provides a consistently comfortable, low energy and healthy internal environment.

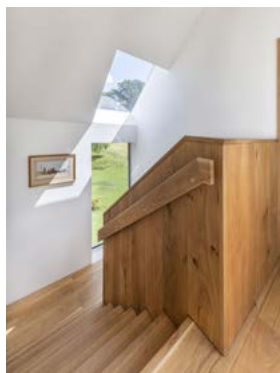
A new extension link acts as a modern cloister defining a new central south-facing private courtyard. Additional new extensions link the original barn volumes further to create a single series of spaces designed to complement modern open-plan living.

Externally, sustainable black-stained larch cladding is set out horizontally on the historic volumes and vertically on the modern extensions to make the new volumes legible. On the roofs, traditional red clay tiles reflect the materiality of the original barns and local vernacular architecture.

Internally, the cloister incorporates a series of oak-lined windows and doors that create a well-lit, airy circulation spaces with visual connections to the central planted courtyard. The main open-plan living space also features large glass sliding doors to enable inside/outside living.

Around the house, large rooflights and windows are carefully positioned to maximise daylight penetration into rooms, while also framing views of the surrounding countryside. A new oak staircase provides a feature link between floors lit from a rooflight above and sets the tone for the simple material palette replicated throughout the house.

Hale Brown Architects have designed a sustainable, low-energy building, which externally respects its past use and form, while providing a beautiful, modern home for future generations.



www.halebrown.com



halebrown architects

T: 020 3735 7442

E: mail@halebrown.com

W: www.halebrown.com





Theftord - Anthracite Electric Towel Rail H850mm x W500mm
600w Thermostatic - from £131 from ukradiators.com

PRODUCT ROUND-UP: STYLISH BATHROOMS

Pinterest shows 1000% increase in searches for 'Stylish Bathroom Ideas'

The interiors world is set to focus on the bathroom in 2024, as research reveals that interest in 'stylish bathroom ideas' has rocketed.

According to data from Pinterest, searches for the term 'Stylish Bathroom Ideas' have increased 1,000% in the last 12 months.

Tara Rodrigues, Interior Designer and founder of Tara Rodrigues Interiors, said: "The bathroom might once have been a purely functional space. Now, homeowners are unleashing their creativity to create their own personal sanctuaries."

Here, the people behind some of the UK's leading independent interior brands share their ideas on how to ramp up the style in the bathroom with solutions for all budgets.

ADD IMPACT AND TEXTURE

Wood panelling is one of the biggest interior trends and homeowners' love affair with textured walls shows no signs of abating. Which is why, SlatWall

specialists Naturewall have created a waterproof version of their quick installation wood panelling suitable for bathrooms.

Naturewall's SlatWall Waterproof panels not only add depth and drama, but are moisture resistant and have a wipeable surface, making them the ideal choice for busy family bathrooms. The wood-effect finish means homeowners can enjoy the aesthetic appeal of wood, without worrying about damage caused by humidity.

Olivia Crosher, Designer and Visual Stylist for Naturewall, said: "When it comes to styling a bathroom, homeowners often want to echo the décor throughout the rest of the home. For so long, wood panelling has been off-limits in the bathroom but our waterproof panels now open up a whole new world of styling options.

"Add depth and drama without compromising on build quality."



SlatWall Waterproof Natural Oak and Black - £74.99 from naturewall.com



Chromatic Palm Leaves in Green - £60 per roll from beautifulwalls.co.uk

EMBRACE PATTERN

Wallpaper can make your maximalist dreams a reality, even in the bathroom.

Tim Dixon, Director of independent, family-run wallpaper retailer Beautiful Walls, said: "Wallpaper is one of the easiest ways to inject character and style in any space, even a bathroom.

"And as homeowners are increasingly looking to carve out their own private sanctuaries, wallpaper can cement a relaxing ambience."

Tim believes green is the perfect choice for creating a stylish relaxing bathroom with thanks to its calming and healing properties. Combine with a nature-inspired print for extra biophilic points.

Tim added: "In terms of practicalities, avoid hanging wallpaper in splash areas around the bath and sink, use an extra strong adhesive and finish with a coat of clear matt varnish to protect from the humidity."

NEW COLOUR SCHEME

One of the quickest and most effective ways of revamping your bathroom is embracing a new colour scheme.

Victoria Yardley is the founder of eco paint brand Victory Colours. She said: "Forget cold white and embrace the colour. A carefully considered lick of paint can elevate your bathroom from dated and drab into a beautiful suite that exudes style.

"Add depth and drama without compromising on build quality."



Alpine Forget Me Not No.122 Kitchen/Bathroom Emulsion - £45.95 for 2.5-litres from victorycolours.co.uk



Picture: Ashford Patterned Tiles - £72.45 per m2 from porcelainsuperstore.co.uk

“And don’t forget the all-important fifth wall - the ceiling, perfect when you’re gazing up from a soak in the tub.”

Victoria added: “Just remember to use specialist bathroom paint. Ours has water resistant properties which makes it perfect for high traffic areas as well as those which are prone to more moistness. It’s also durable and wipeable.”

ADORABLE FLOORS

Superheroes of the tiling world Porcelain Superstore are on a mission to banish the boredom of bathrooms with a new floor tile that fuses the contemporary and the classic.

Ashford Patterned Tiles is a stunner of a tile that manages to channel the period feel of Victoriana with modern geometrics - with the finished product landing somewhere in the evergreen era.

Abbas Youssefi, Founder of Porcelain Superstore,

said: “Why choose between classic and contemporary when you can have both. The real beauty of this tile is it will outlive any passing trend giving the bathroom an ever-stylish flooring around which to build the rest of the décor.”

BRING ON THE BIOPHILIA

Wood flooring in the bathroom?

Until now. Woodpecker Flooring’s Brecon wood design boards not only give the same stunning aesthetic but have been manufactured to withstand humid conditions and splashes from the bath or shower.

Darwyn Ker, Managing Director of Woodpecker Flooring, said: “Wood flooring is an evergreen when it comes to creating stylish interiors, but it’s always been a no-go in bathrooms. Wood and humidity just don’t mix. However, the Brecon collection is perfect for those who want to inject the effortless chic of wood flooring with none of the worry.”

STATEMENT CENTREPIECE

Want to instantly elevate your bathroom from functional to fabulous?

A freestanding bath not only commands attention, but it changes the entire mood of the room - transforming the bathroom into a spa-like sanctuary where homeowners have little choice but to relax.

Brian Athey from Renaissance at Home said: "A freestanding bath is a statement in any bathroom. Homeowners are looking for more out of their bathrooms and whether it's a roll top, mounted on a plinth, or finished in on-trend metallics, a freestanding bath will instantly draw a bathroom out of the purely functional arena and into the aspirational sphere."



Santi Cast Iron Bath with Steel Skirt - £1,335 from renaissanceathome.co.uk



Grain Leaves Mural - £264 from bakedtiles.co.uk

MURAL MURAL ON THE WALL

Want your bathroom walls to tell a story? Grain Leaves is a wall mural from The Baked Tile Company featuring a stunning floral motif in fresh peaches and soft green and exudes tranquillity. The mural pairs perfectly with the increasingly popular terracotta.

Lesley Taylor, Interior Designer and Founder of The Baked Tile Company, said: "Tiled wall murals are the next step in maximalism. These are expansive, huge patterns that will truly take your space to the next level."

"Woodpecker Flooring's Brecon wood design boards not only give the same stunning aesthetic but have been manufactured to withstand humid conditions and splashes from the bath or shower."



Brecon Blanche Oak Wood Design - £50 per m2 from woodpeckerflooring.co.uk

Crafted from durable porcelain, they can stand everything a busy bathroom can throw at them.

ATTRACTIVE ESSENTIALS

Essentials can exude style, and no where is this more apparent than UK Radiators' aesthetically endearing radiators.

The Thetford Electric Towel Rail in Anthracite perfectly unites form and function, with its sleek good looks perfectly complementing its heating output.

Rob Nezard, Managing Director of UK Radiators, said: "The allure of anthracite lies in its ability to effortlessly blend into any space while adding a touch of genuine sophistication to the surroundings."

THOMAS DUDLEY SIGNALS THE END OF THE LEAKY TOILET VALVE

THOMAS DUDLEY LAUNCHES THE WORLD'S FIRST PUSH BUTTON SYPHON

Thomas Dudley the UK's leading innovator in plumbing solutions, proudly announces the launch of Quantum, its groundbreaking all new Pushbutton Operated Leak-Free Syphonic Toilet Flush Valve. This state-of-the-art product represents a significant leap forward in toilet flushing technology, offering unparalleled efficiency, reliability, and water conservation.

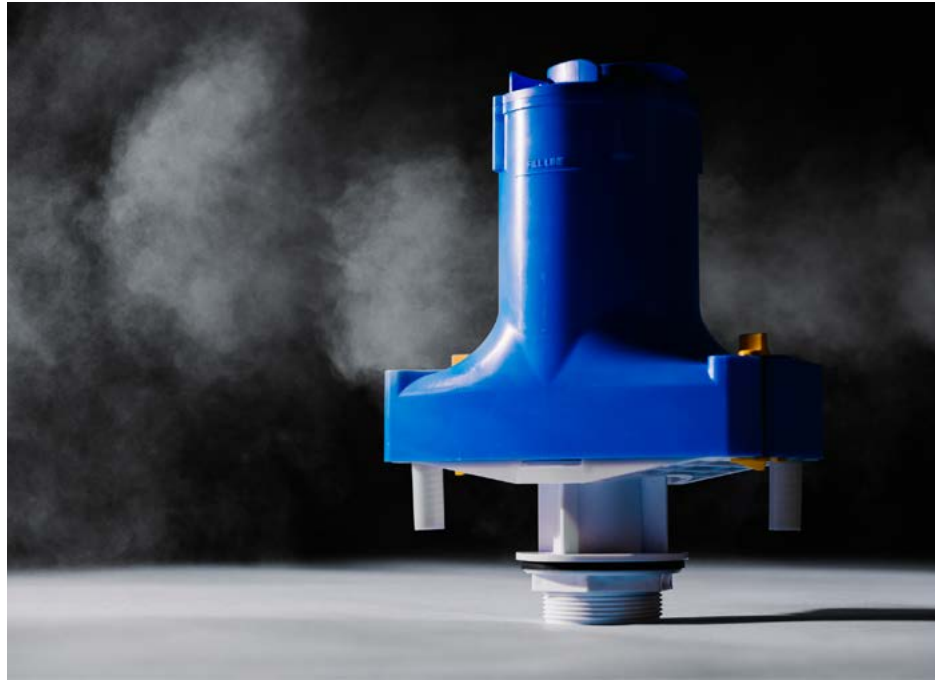
QUANTUM'S KEY FEATURES:

Innovative Pushbutton Operation: Quantum is the first button operated mechanically activated syphon and comes equipped with a user-friendly pushbutton mechanism [available in various styles], providing a convenient and intuitive flushing experience. The modern design of the pushbuttons enhances user interaction while ensuring a reliable and consistent flush with every use.

Leak-Free Syphonic Technology: Designed and engineered in the UK with precision, Quantum incorporates advanced syphonic technology that lifts water with no power assistance in order to eliminate leaks and minimise water wastage. The leak-free design enhances the durability of the valve and contributes to water conservation efforts.

Water Conservation: Thomas Dudley is committed to sustainability, and the new Quantum Leak-Free Syphonic Toilet Flush Valve reflects that commitment. In the UK enough water is leaking from toilets in the UK to fill over 4 MILLION baths EVERY SINGLE DAY. By utilising the leak-free benefits of a syphon, coupled with the ease of the pushbutton mechanism of a flush valve, Quantum optimises water usage by eliminating leaks without compromising performance, Quantum helps users reduce their environmental footprint and lower water bills.

Easy Installation and Maintenance: Designed with installers and maintenance teams in mind, Quantum boasts a hassle-free installation process and requires a vastly reduced amount of maintenance compared to a standard flush valve. This ensures



that both professionals and end-users can enjoy the benefits of this cutting-edge technology with ease.

Durable Construction: Crafted from high-quality materials, Quantum is built to withstand the rigors of daily use. Its robust construction ensures longevity, making it a reliable and cost-effective choice for residential and commercial applications.

Chris Slezakowski Thomas Dudley Plumbing Products Business Unit Director said:

"We are thrilled to introduce Quantum, the first in a new line of Pushbutton Operated Leak-Free Syphonic Toilet Flush Valves, a testament to our commitment to innovation and sustainability. This product not only redefines the flushing experience but also addresses key concerns related to water conservation and reliability. At Thomas Dudley, we believe in providing solutions that make a positive impact, and Quantum is a prime example of our dedication to excellence."

► If you would like to find out more about Quantum then please email: info@tyde.co.uk

You can visit the Thomas Dudley website at www.thomasdudley.co.uk/tyde

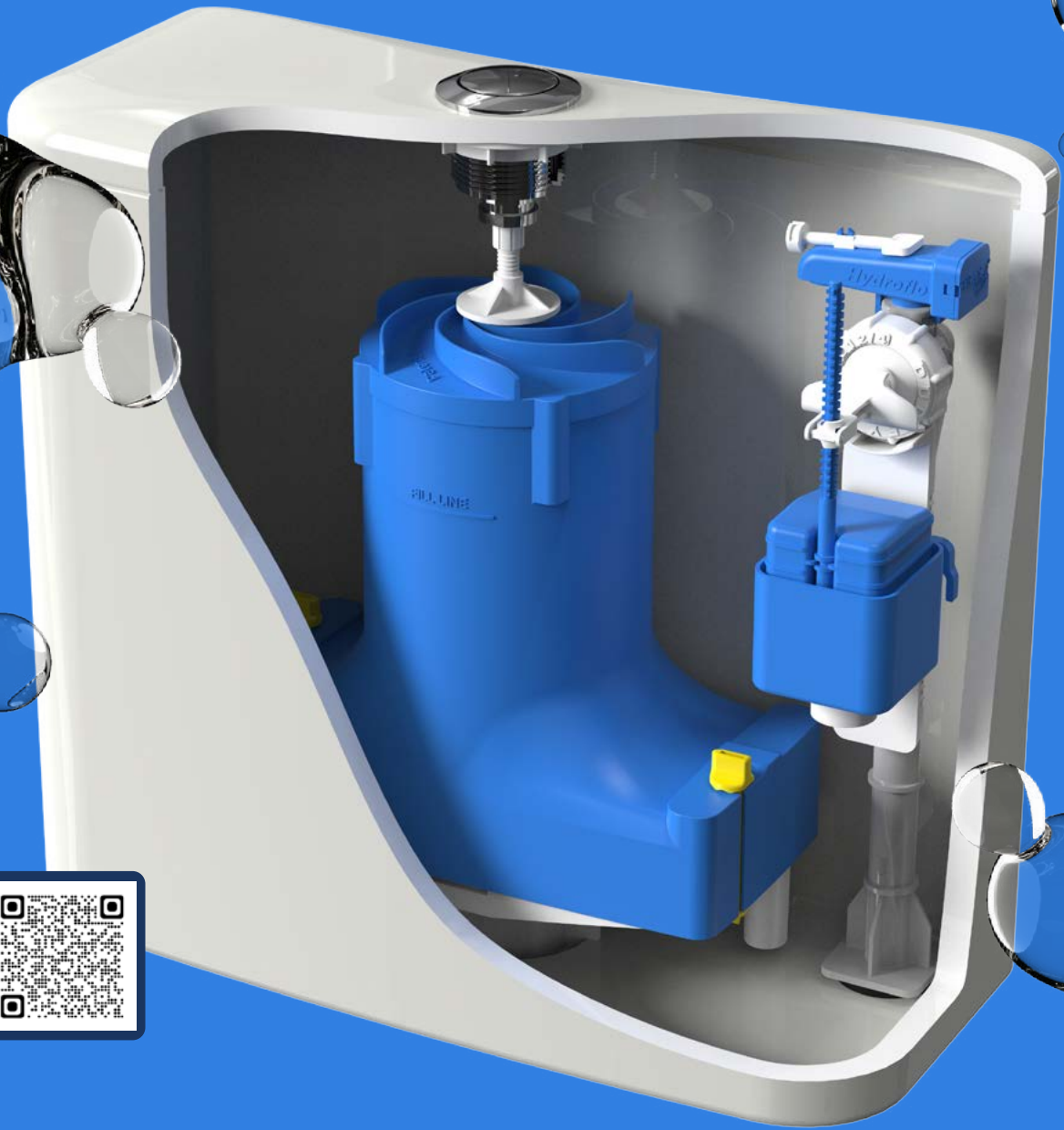
T H O M A S 
D U D L E Y 

Dudley



NEW QUANTUM

THE WORLD'S FIRST PUSH BUTTON SYPHON



Leak-Free
Syphonic
Technology



Optimises
Water Usage



Easy
Installation &
Maintenance

TD THOMAS | DUDLEY 
British design, British build, Family business

FIRED EARTH TRADE JUST GOT EVEN BETTER...



For more than 40 years, Fired Earth has been at the forefront of interiors for both homeowners and professionals alike. Now - with a revamped trade programme with tiered discounts, an increased free sample allowance and extra savings on sale prices - working with Fired Earth just got even better.

The Fired Earth trade programme is designed to give you - and your clients - the very best of Fired Earth in an easy, timely and helpful manner. Trade discounts are available on all products in the bathroom, tile and paint ranges and bespoke items can be sourced too. One-off discounts are also available on large orders.

You can use your trade discount in-store, where you'll have a dedicated member of staff who will be able to help every step of the way. And from the new year, you'll also be able to use it online on our new, dedicated trade website.

And the programme is open to design professionals, including architects and interior designers, property developers, decorators and specifiers.

Fired Earth is well-recognised by consumers and is a much-loved brand. The company's stores are designed to offer a great space in which to discuss projects with clients and the in-house design team can work with you to find products that are perfect for your scheme.

For decades Fired Earth has worked to turn interior design dreams into reality. To create the kind of layered interiors the company is known for it's important to get the foundation just right.

That's why each item in the company's carefully curated tile range has been chosen for its quality, craftsmanship and design.

The same is true of its bathroom ranges - many of which are made here in the UK - and, of course, the considered paint collection, which has brought together every colour you'll ever need.

With a range that takes in everything from hand-crafted artisan designed tiles through to large-format styles in practical porcelain, Fired Earth has every base covered for projects large and small.

Plus, with exclusive designer collections designed in collaborations with renowned names in the interior's world, there really is the perfect tile for every home. Designers such as Kelly Hoppen and Nina Campbell, as well as Designers Guild and Bert & May, have worked with Fired Earth to create stunningly designed patterned tiles and plains in charming and usable shades.

All in all, Fired Earth is a great addition to the portfolio of any design professional.

➤ To find out more about Fired Earth Trade visit their website - www.firedearth.com/trade





VISIT [FIREDEARTH.COM/TRADE](https://www.firedearth.com/trade)

Welcome to
FIRED EARTH
TRADE

WALL & FLOOR TILES • BATHROOMS • PAINT • DESIGN SERVICE



NIKOLATESLA UNPLUGGED **NEVER SO EASY.**

Control your cooking with the simplest gesture with the new NikolaTesla Unplugged extractor hob. Thanks to its beautifully weighted knobs, you can set the most suitable cooking mode and power with a single “click” to make even the most complex preparations simple. An incredible technological solution, with the unmistakable Elica design. Register your product on our website to include a 5 years warranty that lets you relax and enjoy a unique cooking experience.

Discover the full range at elica.co.uk



MOLEANOS LIMESTONE: THE EPITOME OF ELEGANCE AND VERSATILITY



Moleanos Limestone is a remarkable stone that effortlessly enhances a wide range of applications, whether you're aiming for a modern masterpiece or a traditional sanctuary. Its light colour palette and intricate fossil details not only add a touch of natural beauty but also amplify the flow of natural light, creating an open and inviting ambiance in any room or outdoor area.

One of the standout features of Moleanos Limestone is its adaptability. This exceptional stone can be used for both interior and exterior projects, seamlessly connecting indoor and outdoor spaces. For instance, in a recent project, Moleanos Sablino paving was utilized to create two distinct paved areas, resulting in a bright and modern space that is perfect for entertaining and spending quality time with family.

Inside the home, Moleanos was chosen for the kitchen, dining areas, and entrance hall. The light and elegant natural stone not only adds a contemporary touch but also complements the overall design of a renovated rural home. The stone was meticulously cut and fabricated to measure in the workshop, ensuring a perfect fit for the project.

The terrace paving, designed with careful consideration, showcases the versatility of limestone. The slabs were specifically selected for their weight requirements and exceptional

aesthetics. The Moleanos Sandblasted 600 x 600 x 40mm slabs were laid on a pedestal system, creating a seamless installation process. This thoughtfully designed terrace allows natural light to flood the kitchen space below and transforms into a multipurpose and idyllic roof balcony, perfect for hosting gatherings and enjoying the breathtaking views.

At Stoneworld, we take immense pride in sourcing and providing the highest quality natural stone. Our commitment to excellence and attention to detail are the cornerstones of our service, ensuring durability and longevity for your projects. Whether you're designing a modern oasis or a traditional haven, our team is dedicated to helping you bring your vision to life.

If you're considering natural stone for your next project, we encourage you to get in touch with us. Our experts are ready to discuss your specific requirements and provide personalized guidance. Remember, consulting with professionals like Stoneworld is always recommended to ensure the best results for your project.

Experience the elegance and versatility of Moleanos Limestone - a stone that transcends boundaries and creates truly breathtaking spaces.

www.stoneworld.co.uk



STONeworld

Experts In Natural Stone



BESPOKE MASONRY SERVICES

STEPS | COPINGS | PIER CAPS | SCULPTURE
PAVING | WALLING | ROCKERY | WATER FEATURES

01844 279274 | sales@stoneworld.co.uk | www.stoneworld.co.uk | Views Farm, Great Milton, OX44 7NW



LAGULA ARQUITECTES DESIGN VILLA WITH UNIQUE OVOID SHAPE WHICH PAYS TRIBUTE TO SURROUNDING LANDSCAPE

Five-star Spanish lifestyle resort Camiral Golf & Wellness in the Girona – Costa Brava region (Spain) has now added Selva 25 to its impressive collection of properties for sale.

The villa's elevated plot is one of the most premium locations at Camiral Golf & Wellness, with sweeping golf course views surrounding the villa, as well as the Montseny mountains to the west. As it is positioned right at the end of a south-facing slope, the property feels secluded from the outside world.

Designed by award-winning Lagula Architects in 2022, the home has been designed around a central courtyard, which is created to give the feeling of living in a forest amidst a canopy of trees. To truly open itself up to the surrounding views, Selva 25 has an open-plan patio. The 3-bedroom and 3-bathroom property has a unique ovoid shape and takes inspiration from the sun in a bid to frame the surrounding landscape perfectly.

La Selva project pays tribute to the surrounding landscape, with each distinct villa constructed to reflect its local topography. Lagula Arquitectes notes that Selva 25 was "an exciting challenge" and they "found harmony between the circular shape of the building and the floor plan to create something that felt cohesive for its owner." Spread across three levels, the ground floor is home to central areas; the living spaces and kitchen, the upper floor houses the bedrooms, and the basement provides a sanctuary to create a multi-purpose space dependent on the owner's needs." Selva 25 embodies the essence of a home: a cozy ambiance, a seamless layout, and yet, there's an unmistakable, truly remarkable quality about this property. It is also fused together with a central bespoke staircase which connects all the different areas of the house.

Just one hour from Barcelona, and situated within over 1,300 acres of pristine, landscaped hills and Mediterranean forest, the resort is within easy reach of two international airports as well as the wild Costa Brava - with extensive leisure activities available at 5-star Hotel Camiral nearby.

The resort is home to two world-class golf courses - recently ranked the best golf resort in Spain, tennis courts, walking trails, as well as a 1,000m² Wellness Centre: a modern, results-driven sanctuary combining holistic treatments with state-of-the-art technology to garner results catering to personal needs.

Since its venture into Real Estate in 2010, Camiral Golf & Wellness has embraced low-density, sustainable and biophilic design throughout its contemporary properties, incorporating principles of wellbeing to equip residents with a sense of ecological belonging and natural immersion.

More broadly, the resort is recognised for its commitment to its surrounding environment, featuring an organic garden, 12-acre vineyard and 18 beehives hosting a million endangered honeybees, from which it produces around 50kg of honey each year. In-house biologist Oriol Dalmau oversees the parkland while leading a variety of educational, nature-based programmes and activities on-site.

"The 3-bedroom and 3-bathroom property has a unique ovoid shape and takes inspiration from the sun in a bid to frame the surrounding landscape perfectly."



Recent investments include a renovation of all central air conditioning units in the 5-star hotel and Wellness Centre reducing energy consumption by 50%, the installation of a 900 square-metre photovoltaic power station reducing carbon dioxide emissions by 51 tonnes per year and the golf courses irrigation using 100% recycled water.

► For offers or further information please contact realestate@camiral.com

TOUCH

IRONMONGERY LTD



www.atouhofbrass.co.uk

210 Fulham Road, Chelsea London SW10 9PJ

CELEBRATING 40 YEARS

One of London's leading Architectural Ironmongers

Originally called "A Touch of Brass", TOUCH changed their name in 2003 in reaction to advancing market changes in architectural Ironmongery to reflect the broader range of products and finishes that they sell.

In fact today Touch supply 20 different finishes including Brass, Satin Brass, Polished Chrome, Polished Nickel, Satin Nickel, Copper, BMA, Antique Brass, Black, Pewter, Ceramic, leather, Stainless Steel, Satin Stainless Steel, Gun Metal & 4 different shades of Bronze and the list keeps growing. Whatever finish you require, Touch can help you get the right look.

Touch occupy their recently refurbished showroom at 210 Fulham Road, Chelsea, where they stock and display a vast range of their 5,000 products. With a customer base including Architects, Interior Designers, Builders and private Individuals who are interested in the quality end of the Ironmongery market, the company also have a healthy export market to all corners of the world, namely the Middle East, Europe and the Americas.

Touch Ironmongery's owner and founder, Bill Benham, has 42 years' experience in the Ironmongery trade, as does his colleague Jim Haselup. Saleem Qureshi is the newest member of our team and has 21 years' experience, meaning their knowledge is unrivalled in this industry.

The range of products supplied by Touch date from circa 1640 French (Louise XIV) and cover all subsequent periods (Georgian, Edwardian & Victorian), Art Deco and contemporary pieces also make up the product ranges.

Touch showcases the very best of British manufacturing; the best ranges are still produced in the Midlands by craftsmen in factories dating back 200 years or more.

Touch Ironmongery have recently become suppliers for **Designer Doorware (Australia)** Who have beautiful products with a cutting edge design Metal, Wood and concrete. We also have the exclusive rights to sell the **Olaria (Barcelona)** range in the UK.

Olaria make all our bespoke products, they have incredible levels of workmanship.

Touch also sell European manufactured goods which are considered to be of a very good quality.

With trends continuously evolving new and innovative products are constantly under development.

Touch understand that keeping up with the fashion-shifts is imperative in order to provide every customer with the best solution for their requirements.

Ironmongery can be a difficult and complicated aspect of a building project, as a result Touch aim to take this awkward aspect and make it user friendly and clear to understand by offering an on-site service where they carry out a detailed door by door, window by window, room by room Ironmongery schedule, highlighting all requirements and identifying all requirements.

Restoration is a large part of the business Touch will undertake complete Ironmongery refurbishment projects, and can restore old paint covered door furniture to their former glory, looking as good as new again at a fraction of the cost to replace.

For more information about Touch Ironmongery or to arrange a showroom visit please call 0207 351 2255 or alternatively visit www.atouhofbrass.co.uk



BRITISH & EUROPEAN MANUFACTURERS SUPPLYING THE FINEST QUALITY IRONMONGERY

Touch combine traditional skills with modern manufacturing techniques to produce the most beautiful, quality fittings, built to stand the test of time.

As well as specialist bespoke items, Touch supply over 1000 products, available in 23 different finishes to furnish high end residential and commercial properties, royal palaces, government houses, historic castles and stately homes.

Olaria, available from Touch Ironmongery

www.atochofbrass.co.uk
& www.olariabarcelona.com



ENERGY EFFICIENT TIMBER WINDOWS AND DOORS



The Sash Window Workshop specialise in high quality, energy efficient timber windows and doors. They have 30 years' experience working on a wide range of projects, from small flats to prestigious buildings.

The company offer an installation service across London and Southern England, with supply only nationwide.

The Sash Window Workshop were contacted to work on a neo-Georgian property in a Conservation Area in West London. The project involved upgrading 17 windows and a set of French doors.

The new joinery needed to be double glazed to improve energy efficiency, but otherwise be a replica of the original windows and doors.

Although the doors required complete replacement, most of the window frames were in a good condition. A quotation was therefore provided for a mixture of new sashes into the existing frames and, for items where the frame had deteriorated, complete replacement.

The customer decided to proceed, and a survey was arranged to confirm the measurements, ensuring that the new windows and doors fitted perfectly.

The joinery was manufactured by The Sash Window Workshop using Accoya wood, which comes with a 50-year anti-rot guarantee and is known for its stability and durability, before being installed by their experienced fitting team.



After the work was completed, the customer commented:

"The new windows and doors are exactly what we had hoped for."

▶ To obtain a free, no obligation quotation, call 01344 868 668 or send drawings across to info@sashwindow.com. You can also visit the company's website: www.sashwindow.com.



Traditional Timber Windows and Doors

High quality, energy efficient timber windows and doors. Conservation Area specialists. Supply only, supply and install, secondary glazing and draught proofing.



01344 868 668 www.sashwindow.com



THE SASH WINDOW WORKSHOP

THE VINYLPLUS® PRODUCT LABEL



THE SUSTAINABILITY MARK FOR PVC PRODUCTS IN BUILDING AND CONSTRUCTION

The tool to guide public and private buyers to identify and select the most sustainable and high-performance PVC products for the building and construction sector.

The sustainability scheme dedicated to plastics recognised in BREEAM® and HQM



BREEAM®
delivered by bre

HOME QUALITY MARK
delivered by bre



The VinylPlus® Product Label Holders



Check out for certified products



PARAGRAPH 79 HOUSE IN SUSSEX



A NEW, HIGHLY SUSTAINABLE HOUSE BUILD, BUILT UNDER PARAGRAPH 79(80) IN SUSSEX FEATURING SPECIALIST GLASS DESIGN FROM IQ GLASS.

IQ Glass and Morgan Carn Partnership complete a sustainable bespoke house in Sussex AONB, dubbed the 'James Bond Villain' house.

The large bespoke home is built on the site of an old quarry, and takes inspiration for the plot's previous use for the design. Morgan Carn Partnership explain "The design has evolved from the shapes and the angles of the bricks and glass shards that were deposited on the site while the old quarry was being backfilled."

Large glass elevations within the brick elevation were a key design feature. Of particular note is the large 4m tall projecting window on the first floor. IQ Design Manager Tony Fuller says "The projecting window had to be fully engineered using 3D technology. The line and wind loadings on the glass had to be considered along with the outward leaning angle so that we could design the correct glass specification and fixing."

The overall build was built under Passive House principles to ensure the exterior envelope was highly insulating. Thermal bridging was a key design consideration and glazing was triple glazed for enhanced U_w values.

www.iqglassuk.com





Ultimate
rose

This low-maintenance timber-alternative sash window is warm, quiet and secure. It's easy to operate, and it never needs repainting.

It's not timber. But you wouldn't know that from looking at it.

Elegant, traditional, classic sash windows from the UK's leading manufacturer.

Roseview Windows | sashwindowsuk.com/tellmemore



TIMELESS ELEGANCE AND STYLE WITH CROFT'S RIM LOCK COLLECTION

Luxury British architectural hardware brand, Croft, proudly presents the Rim lock collection - an exquisite range of meticulously crafted, hand finished locks and latches. Comprised of seven distinct ranges, each design promises to elevate any interior with their intricate detailing and eye-catching beauty.

Available in a range of finishes, patinas and sizes, each product is made by skilled craftspeople who are committed to maintaining the highest standards of quality. Blending time-honoured techniques with modern day knowledge, each lock and latch is hand measured and hand filed - with every component handcrafted from premium brass. Customers can choose from 20 different knob designs to complement their rim lock.

Providing a classic, straight-edged aesthetic, the Somerford, Beckbury and Kingswood ranges are superbly adaptable for both modern and traditional homes.

Eclectic and intricate, the Décor collection introduces truly unique designs that inject decadent and artistic characteristics into homes. From the floral-inspired Botanica and Nouveau to the Art Deco Herringbone and Aztec, every product is designed with care and the finest details.

Earthy and raw, with a touch of the industrial aesthetic, the Draycott range introduces a tactile and visually striking element to any space. Made from cast iron, it is a versatile and hardwearing option - perfect for busy households.

Stand out from the crowd with the Millbrook collection. Antique and rippled in appearance, the rim lock, latch and deadlock instantly elevate any internal door whilst creating a beautiful point of interest.

 www.croft.co.uk



GARADOR'S SOLAR ENERGY SYSTEM OUTPERFORMS EXPECTATIONS



Garador, one of the UK's first garage door manufacturers to start using a renewable power source for its factory, has announced that its solar based energy system is outperforming all expectations.

Last summer, Garador installed a vast array of 1600 solar panels on the roof of its Somerset factory. The latest reports coming in now show that even during the winter months, Garador's new renewable energy

system has been steadily outperforming predictions and expectations.

Garador's Managing Director, Jon Watson, says: "With the strong benefits of helping to reduce our carbon footprint and also keeping our overall manufacturing costs down, without doubt our plan to invest in solar energy was the right decision." s.

 [Find out more about Garador garage doors by visiting www.garador.co.uk](http://www.garador.co.uk)



PORTHOLES



LOUVRES



POWER TRANSFER UNITS



LOCKS AND CYLINDERS



FLUSH BOLTS

**SPECIALIST
ARCHITECTURAL
HARDWARE SUPPLIERS
TO THE DOOR
OPENINGS INDUSTRY**



VISION FRAMES



FINGER PROTECTION



DOOR STAYS



PANIC HARDWARE



ACOUSTIC SEALS

ZERO SEAL SYSTEMS LTD
UNITS 43-45 LADFORD COVERT SEIGHFORD STAFFORD ST18 9QG
TEL - 01785 282910 E-MAIL - SALES@ZEROPLUS.CO.UK
WWW.ZEROPLUS.CO.UK

ZERO plus

OLD MEETS NEW IN THE COTSWOLDS



A mix of traditional master craftsmanship combined with the latest building design techniques have been effectively combined in this stunning property in the heart of the Cotswolds. Set in its own valley, it comprises a period cottage with a contemporary extension built into the hillside.

An impressive wall of glazing to one side of the build maximises the views across the countryside, giving a light, open feeling to the design.

However, at night, or when the property is empty, such a remote location can cause concerns about security, prompting the client to specify shutters on all the windows and entrances.

Naturally, when so much thought had gone into matching the old to the new buildings, the aesthetic design was of paramount importance. By choosing Equilux security shutters from Charter Global Ltd they could be intelligently concealed within the honey-coloured

Cotswold stone and when lowered, the anodised shutters' have a subtle matt silver finish which complements the natural choice of building materials.

Installed in the traditional manner at the time of build, the Equilux system incorporates a shutter within a structural lintel, providing an unobtrusive structurally integrated solution that still addresses the usual features of lintel design such as structural loadbearing, cold bridging and damp proofing, but has the added benefit of acting as a high security shutter.

The security shutters have been fully integrated into the property's Building Management System and can be remotely controlled at the touch of a button.

➔ **Charter Global Ltd, T: 0845 050 8705**
W: www.charter-global.com
Email: enquiries@charter-global.com

CHARTER
GLOBAL
 PROTECTING PEOPLE | SECURING PROPERTY

Arridge Garage Doors Since 1989



- Top Brands
- Discounted supply to trade and retail
- Quality installation service available

 **REVIEWS**
4.82 Rating

sales@arridgegaragedoors.co.uk
arridgegaragedoors.co.uk • 01691 670 394

UNVEILING THE NEXT CHAPTER HAWWOODS DEVELOPS NEW & ENHANCED PRODUCT OFFERING

Leading wood surface specialists, Havwoods, has undergone a brand refresh to take its offering to the next level to meet the expanding requirements and needs of its customers. Using its expert knowledge in wood and design, Havwoods has expanded and enhanced its collection to include a series of new and innovative timber surface solutions.

Continuing to provide luxury wood flooring for residential and commercial use, the refresh offers decorative and structural wood that works beyond the floor - providing a full circle wood offering for every purpose and application.

“To meet the growing demand of our customers, we have been able to turn aspiration into reality by taking the brand wider. As a trusted name within the design community providing quality flooring solutions for nearly 50 years, we are now

taking Havwoods to the next level, offering design and wood that works beyond the floor. We have used the opportunity to refresh the brand with an enhanced wood offering by expanding our range to include other wood surface designs. Like all products, everything we are introducing is underpinned by quality and the Havwoods customer experience.”
Andrew Barnes, Global Managing Director at Havwoods

With collections such as Vertical and Purepanel already offering wall and ceilings solutions, new ranges have been added to further expand the choice of vertical and ceiling applications. From the new Simplista range to the eye-catching Japandi panels and Hushwood Acoustics, there has never been more choice for residential and commercial projects.

www.havwoods.com/uk



WOOD WAX FINISH.

osmo

osmo
Wood Wax Finish
Wood finish for interior use
Natural oil-wax based - microporous
Resistant and durable
Transparent, satin
Finish, satin-gloss
or matte

**ENDLESS COLOURS FOR
INTERIOR WOOD**

www.osmouk.com

AUTHENTIC WOOD DESIGN FLOORING



The UK's market leader in luxury vinyl flooring Karndean Designflooring has extended its sophisticated Art Select wood collection with 14 new contemporary designs, including shades of French oak, hickory and American chestnut, in a range of tones from gentle beige and cool grey to warm honey and chocolate tones.

Featuring a bold pattern for impressive variation across the floor, Karndean's Art Select wood collection introduces an exclusive realistic embossed surface and extra-large planks (56 x 9") to effortlessly recreate a highly authentic look of traditionally crafted wood planks.

www.karndean.com



LIBERTY®

FLOOR SOLUTIONS



XPRESSIONS 8/32 LAMINATE

URBAN 55 NEO & HERRINGBONE LVT

ROCK 40 ACOUSTIC SPC

PUZZLE 70 & HD36+ VINYL

Experience the pinnacle of luxury and durability with the Liberty Floor Solutions brand. Whether you are looking for a Laminate, LVT or SPC product, the Liberty brand has a range sure to suit your needs. Upgrade your space with Liberty Floor Solutions 'Click Fit' Xpressions 8/32 Laminate, 'Dryback' Urban 55 Collection, comprised of Neo & Herringbone LVT, 'Uniclic' Rock 40 Acoustic SPC or 'Loose Lay Tile Lock' Puzzle 70 & HD36+ Vinyl and elevate your surroundings with style, comfort, and resilience.

Birch Distribution

www.birchdistribution.co.uk | 0114 243 1230

Provincial Floorcoverings

www.pfl.ie | 06 353 61 227100

STS Flooring

www.stsflooring.co.uk | 0345 899 1000

Beautiful Designer Ceiling Fans



Powerful - Reliable - Silent

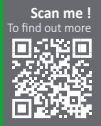


01256 636 509
www.henleyfan.com

myneo
Fluid Curved



- + Directly connectable to Internet through your Internet provider box without any other accessory.
- + Can be remotely-controlled by your smartphone, tablet or computer and by voice with the MYNEOMITIS free application.
- + Full color touch screen with customizable display, easy to read.
- + Extra-flat occupancy detector, dual occupancy detection.
- + Auto-programmable with dual optimization feature.



NEOMITIS®

4th Floor, Lincoln House, 300 High Holborn, London WC1V 7JH, UNITED KINGDOM
Tel: +44 (0) 2071 250 236- Fax: +44 (0) 2071 250 267- E-mail: contactuk@neomitis.com
www.neomitis.com



CONSORT CLAUGEN LAUNCHES DF2E DOWNFLOW FAN HEATER

Consort Claudgen's new DF2E downflow fan heater has a 7-day timer and six temperature settings per day, allowing you to personalise your comfort. Features include open window detection, a digital lock, a large LCD screen, a digital variable thermostat, and a reliable battery backup to keep the clock running during power outages. The heater continues its heating programme after power is restored.

The heater offers quick warmth and allows you to choose between 1kW or 2kW heat output during the installation. As it approaches the desired temperature, it automatically reduces the



heat output to 1kW to save energy. For safety, the DF2E has an automatic safety cut-out and will stop operating if the fan or temperature sensor malfunctions. The DF2E heater combines modern heating technology, energy efficiency, and safety, making it an excellent choice for bathrooms and kitchens.

01646 692172
sales@consortep.com
www.consortep.com

DF2E DOWNFLOW FAN HEATER WITH 7-DAY TIMER



- Adjustable heat output (1kW or 2kW)
- 7-day programme, 6 temperature settings per day
- Digital variable thermostat
- Safety & lock features
- Open window detection



NOW AVAILABLE

For more info on DF2E heater

01646 692172 sales@consortep.com www.consortep.com

THE IMPORTANCE OF THERMALLY ISOLATING BUILDING ENVELOPES

In the UK, a staggering 45% of all carbon emissions stem from the building environment, with domestic buildings contributing 27% alone. In the pursuit of a more sustainable future, integrating energy efficient solutions into building structures is paramount.

There are a number of important areas within a building envelope where thermal bridges can occur, which are often overlooked in the initial design phase. These are significant culprits of energy loss, and often compromise the overall efficiency of a building. To combat this, innovative solutions like Armatherm's thermal breaks play a crucial role.

So, how do thermal breaks work?

These cutting-edge materials can be seamlessly integrated into various structural connections within a building, from foundations to roofs. Incorporating thermal breaks, particularly in balcony and column base applications, yields significant reductions in energy transfer, resulting

in a cost-effective and reliable solution.

What are the benefits?

By identifying and addressing potential thermal bridging points during the initial design phase, architects, specifiers and developers can make informed decisions that optimise energy efficiency. The reality is, however, they're often overlooked and not specified, which can render other costly energy-saving solutions redundant.

Failure to prioritise thermal breaks can hinder achieving desirable R values necessary for sustainable construction. Such oversight not only jeopardises compliance with regulations like the 2008 Climate Change Act, but also undermines broader sustainability goals.

Thermal breaks emerge as one of the most significant investments which can be made during a major construction project, contributing substantially to the creation of



sustainable, energy efficient structures that align with regulatory standards, and of future environmental targets.

➔ For guidance on selecting the most suitable thermal break materials for your project, visit www.armatherm.co.uk.

Thermal Bridging Solutions



Armatherm™ is one of the leading suppliers of thermal break materials for the construction industry. Our goal is to provide architects, engineers, and contractors with the knowledge and materials to effectively address thermal bridging issues. Armatherm™ thermal break materials have low thermal conductivity, high strength, and have been designed and tested to carry the loads, and prevent thermal bridging.



www.armatherm.co.uk

INFINITY 890HD BALANCED FLUE GAS FIRE VERSATILE INSTALLATIONS FOR EVERY HOME



A stunning landscape hole-in-the-wall fire. Ideally proportioned, the 890HD BF is the perfect size hole-in-the-wall fire that can be fitted in a wide variety of ways.

LIMESTONE SLIPS

Frame your fire with chunky limestone slips, creating a modern fresh interior design.

FRAMELESS IN WALL

For the ultimate modern twist, the 890HD BF can be installed with plaster up to the edges, creating a seamless transition between the fire and the wall.

INTO A TRIM

Add depth and contrast to your interior with the zero clearance kit. Drawing your eye to the flames within, and the new mixed log fuel bed.

➤ www.charltonandjenrick.co.uk



Passivhaus
mvhr
 heat recovery ventilation

Scan here for Budget Costs


Our specification..

- ✓ Guaranteed performance & compliance
- ✓ SILENT OPERATION
- ✓ Effective summer cooling (optional)
- ✓ Traffic pollution filtering (PM2.5 & NOx)
- ✓ Passivhaus certifiable 3D design
- ✓ Fully managed installation
- ✓ Remote online support
- ✓ Routine servicing
- ✓ 7-Year warranty






★★★★★
 For a 5-star service call..
01625 423020
 Send plans to sales@solarcrest.co.uk


Solarcrest
 COMPLETE ECO-RETROFIT


AIRFLOW
 PREFERRED PARTNER

Cool Radiators

The stylish, elegant & intelligent radiator cover solution



Timber | Painted | Laminate

Request a brochure at
www.coolradiatorscovered.com



**Eco-nomic
Insulation Ltd**

- Quality factory reject Celotex insulation boards
- Thickness from 12mm to 250mm
- Standard size 1.2m x 2.4m
- Other sizes are also available
- Discount available for large orders
- Nationwide delivery subject to agreeing on delivery cost





Collection from

Unit W, Stafford Park, Listion
Sudbury, Suffolk, CO10 7HX

Culford Sawmill, Brandon Road
Culford, Suffolk, IP28 6UE

Office: 01787 370 295 | Mobile: 07963 695 226 | sales@economicinsulation.com
www.economicinsulation.com

WHY CHOOSE RADIATOR OUTLET?

WELL, WE ARE THE HOME OF AFFORDABLE RADIATORS!

Here, at Radiator Outlet we have built a healthy reputation over the last 5 years of providing fantastic quality radiators at affordable prices. Throughout this duration, we have supplied our radiators to thousands of customers throughout the country and acquired over 16,000 5-star reviews stating how attractive and efficient our radiators are once fitted in your home!

All our radiators are manufactured to the highest standards, with no corners cut when it comes to materials used or the manufacturing process. We only supply the highest quality radiators to our customers; our reputation means too much to us to offer anything less.

Our company 'mission statement' is to provide high quality radiators at affordable prices. And that is just what we do.

When buying radiators from Radiator Outlet, you can be assured of warm, reliable and super stylish radiators arriving quickly at your door!

It is no secret that costs have drastically increased due to the covid 19 pandemic with many companies in all industries looking for alternative materials to keep costs down. Despite these global issues, our radiators are identical in specification to pre covid 19 with the same thickness of steel, high quality packaging, super impressive heat outputs; and showroom standard coated finishes, ensuring the same level of satisfaction every time!



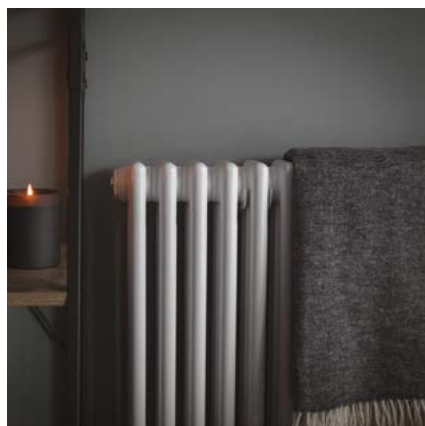
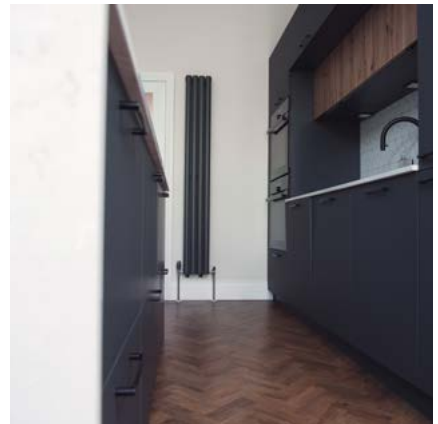
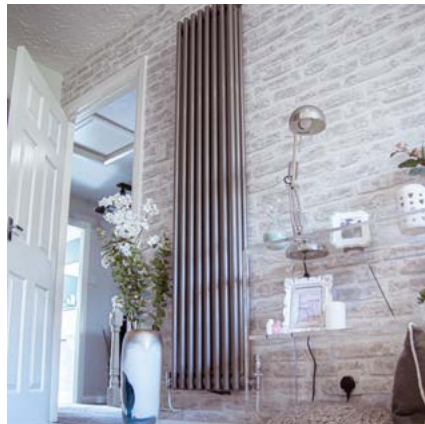
Another core fundamental to Radiator Outlet, is the fact we manufacture our own radiators and have warehouses storing our catalogue of radiators, meaning that stocking issues are rare. We are in complete control of the supply chain, meaning any delays from third parties are not a factor when buying from our website.

Finally, and most importantly as a customer, should you have any issues down the line, your hassle-free 10-year warranty is with us directly, so you are covered. No long-winded process of chasing your radiator manufacturer, you have bought from us, we supplied your radiator, it is down to us to resolve any issues.

www.radiatoroutlet.co.uk

radiatoroutlet

THE HOME OF AFFORDABLE RADIATORS



For more information, please contact us.



Phone: 0845 860 5908

Website: www.radiatoroutlet.co.uk

Email: hello@radiatoroutlet.co.uk



THE COTSWOLD COMPANY

The Cotswold Company introduces three new designs to its upholstery collections for Spring 2024, crafted in the UK with over 25 years of expertise.

For over 25 years, The Cotswold Company has been developing and crafting beautifully designed furniture and accessories for the home, drawing continuous inspiration from the natural beauty, way of life, architecture, and spirit of the Cotswolds.

Today, The Cotswold Company has perfected its sofa and armchair collections with over 20 designs, 50 fabric options, and 3 leg finishes. Each piece is meticulously handcrafted in Long Eaton, Derbyshire, by master upholsterers using the highest quality materials - from sustainably sourced wood frames to robust steel springs. In addition, and to reflect the brand's commitment to quality, each piece comes with a 15-year frame guarantee.

For Spring 2024, The Cotswold Company launches three new designs within its upholstery collections. Leading the way is the Jackson, a contemporary showstopper dedicated to the pursuit of comfort. Boasting smart, clean lines, and luxurious feather back cushions, this design promises a perfect blend of style and indulgence.

Meanwhile, the Taylor is designed with higher back cushions to add extra comfort and support mixing traditional elegance with exquisite scroll arm details and legs on castors, paying homage to the enduring beauty and craftsmanship of antique pieces.



Rounding off the new additions is the Stewart collection- with its elegant design featuring irresistibly deep cushioning, tailor-made for social spaces and family living. Each of these designs is thoughtfully crafted and available in a diverse range of sizes, fabrics, and leg finishes, allowing customers to tailor their choices to suit individual preferences.

In addition to the latest designs, The Cotswold Company will introduce a selection of new fabrics in May 2024. Among these is a textured velvet available in six exquisite colours, as well as a striking herringbone design offered in two sophisticated colour variations. These new textiles will sit alongside existing customer favourites, including the House Linen Mix, which combines the soft, subtle texture of linen with the easy durability of polyester, making it the perfect choice for both loose cover sofas and more tailored shapes. For those looking for a more durable finish for a busy household, the Oxford and Mystic Acquaclean fabrics are made from recycled fibres and feature a revolutionary treatment that allows everyday stains - like wine, ink, mud, and chocolate - to be easily removed using just water.

Customers wanting to discover more about the upholstery collections can speak to one of the team at the UK-based call centre or visit one of the brands 9 UK-based stores. There, they can expect to receive expert advice from a customer service specialist, as well as having the opportunity to browse upholstery drapes and sofa shapes. For added peace of mind, customers can also order free fabric sample swatches online or collect them in-store, allowing them to see the fabrics in different lights at home as well as checking against existing interiors.

www.cotswoldco.com



"In addition to the latest designs, The Cotswold Company will introduce a selection of new fabrics in May 2024."



B Sir William



Bespoke & antique billiards. Chosen by design.



Bentley Billiards



www.billiards.co.uk | +44 (0) 1264 731 210



NEW BRICK SLIP ROOM VISUALISER



THE BRICK TILE COMPANY IS EXCITED TO ANNOUNCE IT'S NEW ROOM VISUALISER

The new tool on the website is available to help choose which blend of brick slip and mortar colour works best in your room.

The service, powered by Roomvo allows homeowners, installers and designers to create mockups of what their completed project would look like by uploading a photo to the software and selecting the wall(s) in question and the blend and mortar colour:

- Use one of 4 preloaded images
- Upload your own photos to try different areas and angles
- Easily switch between brick slips, and different mortar combinations
- It can be used on the walls or floor

A few months in the making, this software is a key piece to giving customers peace of mind when they choose their products. As a 2D rendering from repeatable imagery it should be used alongside customer project photos and the samples of the real thing to truly understand the impact that brick slips will make in a space.

Currently the visualiser works in stretcher bond only, with plans in the pipeline to extend this to include flemish bond with half tiles, and a herringbone pattern- something particularly popular in flooring projects.

"This is a big step for us, we understand that our product is different, and customers need to feel confident about choosing brick slips, their blend choice, and their mortar choice. We want to help our customers as much as we can."

Joe Burton - Brand Director

www.bricktilecompany.com

Tom Raffield

Making sustainable living beautiful



Artisan homeware handcrafted in England.

www.tomraffield.com

BRITISH DESIGNED LUXURY FURNITURE AT AFFORDABLE PRICES



My Furniture have perfected the neutral trend this season. Their organic, curved silhouettes inspired by nature will add flow, movement and balance to any interior. Create a calm, cosy and relaxing atmosphere by embracing a neutral palette of ivories, chinks and taupes.

With an extensive knowledge of interiors and a forward-thinking approach, My Furniture are constantly creating fresh and original designs. An increasing number of design professionals are favouring this dependable and affordable furniture provider; including architects, interior designers and property developers.

Early 2020 saw My Furniture substantially extend their warehouse and showroom, resulting in increased stock availability and further streamlining the ordering process for the customer. With over 12,000 Trust Pilot reviews and consistent 5-star ratings, customers can buy in confidence.

Designing in-house in the UK enables this luxury interiors brand to do what they do best - offer unique luxury pieces at affordable prices. Equipped with an in-house upholstery team, it allows them the flexibility to provide bespoke fabric options to suit their customers' specific needs.

My Furniture regularly add new collections to their portfolio.

Whether your preference is hotel luxe or simple elegance, you will undoubtedly find the perfect piece that can be in your home in as little as a couple of days.

New to their collection this season, is the Pax lounge chair. A beautiful opulent accent chair inspired by luxurious hotel interiors. Also joining the Pax is a selection of new seating, artworks, rugs and unique accessories.

Also available from their showroom in Nottingham and online are a wide range of products, from bedroom and dining furniture to elegant lighting and accessories. Alternatively, all products can be viewed via a video call facility with a member of the sales team.

My Furniture are passionate about providing excellent customer service and offering luxury items at affordable prices. Authentic, reliable and honest with FAST AND FREE DELIVERY TO UK MAINLAND. Delivery available throughout Europe.



➡ Discover luxury furniture and a wealth of home décor inspiration, visit: my-furniture.com or call freephone 0800 092 1636.

my furniture



your home
my furniture

living · dining · bedroom · lighting · accessories

my-furniture.com

KAFE AESTHETIC BRING THE LOOK AND FEEL OF THE COFFEE SHOP TO YOUR OWN HOME



Want to recreate the relaxed vibes of a coffee shop in your own home?

According to new research from independent wallpaper retailer Beautiful Walls, homeowners are becoming increasingly influenced by coffee shops, with many wanting to recreate the look in their own homes.

Beautiful Walls used data from Pinterest and found that searches for the term 'Kafe Aesthetic' have increased 820% over the last two years.

Tim Dixon, Managing Director of Beautiful Walls, said: "Coffee shops have become sanctuaries for many, offering a sense of community and creativity.

"Wallpaper can help capture the essence of your favourite coffee shop and recreate it within your own home, creating a space that inspires and relaxes.

"Just remember to invest in a decent coffee machine so the home is full of the same aroma too."

Here Tim picks out some of his favourite papers from Beautiful Walls, to help homeowners recreate the look and feel of a coffee shop at home.

► **Prices start at £35 per roll and all designs are available from beautifulwalls.co.uk**



THE OUTDOOR CUSHION CO.
COMMERCIAL DIVISION



**Professional Suppliers, of choice,
to Britain's Landscape Architect
& Garden Design Industry**

**MADE-TO-MEASURE OUTDOOR CUSHIONS
THAT CAN BE LEFT OUT IN ALL WEATHERS**

0800 488 0580 | info@outdoor-cushion-commercial.co.uk
www.outdoor-cushion-commercial.co.uk



ALAMEDA GARDEN BUILDINGS | Beautiful Garden Rooms.

Choose from our current range or work with us to design your own building.
Our products are built to last. We only use top quality materials. All our buildings are fully insulated to give you year round enjoyment.
We strive to give you the best quality products for the most competitive price.
Manufactured and installed by Bedfordshire master craftsmen.

Your Local Garden Building supplier.

07784 358814 / 08454636634

info@alamedagardenbuildings.co.uk
www.alamedagardenbuildings.co.uk



JAGO
Designs

Bespoke Pull Handles

www.jagodesigns.co.uk

info@jagodesigns.co.uk | +44 (0)1494 462023

SPRINGLOCK SECURITY PICTURE FIXINGS



Photo credit - www.robertmillsphotography.co.uk and www.buylovevintage.com

The Springlock concealed security fixing was developed by a company with many years of experience installing pictures in hotels, pubs, clubs & restaurants. Frustrated by the shortcomings of existing hanging devices, the Directors decided it was time for picture installation to evolve & they began engineering an entirely new concept. This was designed & created by brothers John & Roger Hough, formally of Ovolo Designs Ltd, based in Barnet, North London. They patented the idea and worked tirelessly on business development immediately afterwards. It took extensive effort to develop the Springlock branding without the power of the internet. No webpages to explain how it worked, no email to connect with potential customers and no social media to spread awareness of the product.

Convincing picture framers that Springlock was a more sophisticated fixing was a feat of endurance to say the least. Nobody had even heard of it, let alone sampled it's working. But since then, Springlock has rapidly grown by it's own merit. It has become a market leader in picture fixings used throughout the United Kingdom with many wholesalers showcasing it within their online brochures and throughout physical stores with their over the counter sales.

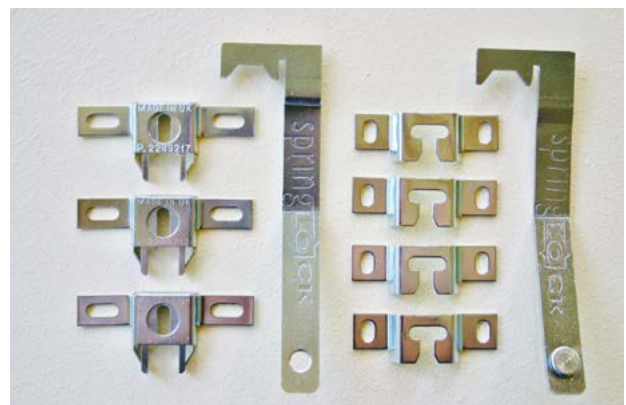
Springlock's reputation as a security fixing has led to it's use in most high end Hotels, Restaurants, Galleries & museums including The Langham and St Pancras Renaissance Hotel, the National Gallery & the Victoria & Albert museum. It appears in capital airports including Heathrow & sales have expanded on a global scale reaching as far as the Oceanic. They are also being specified as compulsory on many cruise liners.

From embryonic design to today's market, Springlock Ltd is still a successful family run business. We pride ourselves on it's UK manufacture and work only with the best tools makers and shipping distribution services.

Having gained experience in the industry working on picture frames and their installation for Ovolo Designs many moons ago, Kate Heath, daughter of Roger Hough took the reins in 2017.

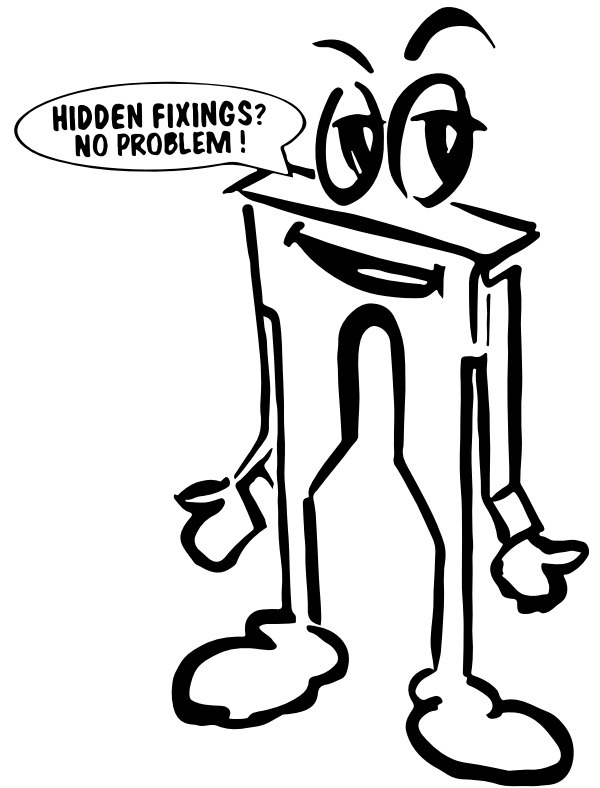
Kate is happy to share her Springlock knowledge and experience should you have any queries. We are based in Hertford, Hertfordshire where collection is possible.

► **Please explore our website for further details on how to order & find a 'how to use' video along with downloadable instruction leaflets - www.springlock.co.uk. Alternatively, if you prefer human interaction rather than the www. then just call us on 01992 475353.**



SpringLOCK Security Picture Fixings

Springlock Security Picture Fixings offer, the professional and amateur, a simple and effective method of hanging pictures, artwork, canvases and mirrors to all types of wall. Designed and produced by a contract picture supplier to the corporate and leisure industry, frustrated by the shortcomings of fixings available on the market, Springlock offers many advantages.



Quick and easy to install.

- Pictures can be fitted faster than by using any other security fixing offered on the market today saving £££'s in labour costs.
- Any type of conventional screw can be used.
- Springlock's design allows for a slight tolerance of inaccuracy when drilling and plugging a wall.
- Springlock is very easy to level accurately.
- Use of a simple 'push in' locking mechanism.



Please find our how to use instruction guide within our website:

www.springlock.co.uk

A STRONG ACCENT IN THE INTERIOR – BRUSHED METAL HPL NOW AVAILABLE FROM DECORATIVE PANELS LAMINATION



In recent years, we have seen the growing popularity of metallic design accents in interior and furniture design. Adding a touch of glamour and elegance, metallic details are a great way to liven up any space. Regardless of the style in which we decorate our interiors, decorative metal surfaces fit perfectly and add a unique touch.

Decorative Panels now offer a range of 6 brushed metal HPL designs from Kronospan - leading manufacturer of wood-based panels. These Metal HPL finishes are modern and sophisticated and include Brushed Aluminium, Brushed Titan, Brushed Inox, Brushed Gold, Brushed Copper and Brushed Bronze. These metal decors, made from high-quality MDF substrate, are coated with real aluminium sheets, and covered with protection foil. They are suitable for vertical applications such as doors, as well as horizontal surfaces like home and retail countertops, offering a stylish and tactile experience in residential, business, or commercial spaces.

Functional and almost indestructible Metal HPL surface in an interior bring an atmosphere of calm and order to the room. If you are one of those who appreciate subdued elegance and pure functionality in furniture, Metal HPL surface collection from dp-limitless range, is excellent for you. Brushed Copper, Brushed Gold and Brushed Bronze accents adding warmth and nobility to interiors and combining fantastically with most of the decorative surface materials. Metal HPL Brushed Inox, Brushed Aluminium and Brushed Titan on the other hand, takes us into a more industrial atmosphere. Metal provides a feast for both the eye and the sense of touch. Regardless of the style of the interior, metal finishing introduces intriguing material contrasts into the designed space.

Beyond its strength, durability and quality, the use of Metal HPL has also become popular because of the variety of design possibilities it offers. Metal HPL's have simple but unique brushed lines, and metallic effect integrates harmoniously into any decorative style. They are compatible and can be combined with furniture made of other materials.

Metal HPL's surface is an ideal choice for the home. In fact, they are trendy, and not only in more industrial styles, as they combine perfectly with wooden furniture.

Decorative Panels Lamination is here to give you endless possibilities from their dp-limitless range.

➡ Visit: www.decorativepanels.co.uk or contact Decorative Panels Lamination on 01484 658341.





the
decorative
panels
group

YOUR PERFECT PARTNER

Finish shown: Serica Pebble & Serica Kombu Green

SERICA.

Create a sense of
refined luxury.



dp-lamination

dp-lamination leading the way in the production of laminated products. The largest and most diverse portfolio of decorative surfaces available in UK.

www.decorativepanels.co.uk



CONFORM ARCHITECTS

The existing garden flat was compromised in its arrangement, suffering low ceiling heights, dark spaces, and poor connectivity to the large rear garden.

Long-time followers of the architects' work, the client appointed ConForm to design a refined, sophisticated, and textural home capitalizing on and extending into the large rear garden surrounded by mature trees.

The original concept of the rear extension draws on a reinterpretation of the decorative bay windows of the building and ornate details of the front elevation, typical of the Victorian terraced homes



throughout the Conservation Area. Conceptually the extension is developed as a contemporary canted bay, angled at the rear to lessen the visual impact on neighbouring properties, whilst evoking the characterful Victorian street scene.

The concept is enhanced further in section, by drawing on the tri-sectional elements of a typical bay window - plinth, column and pediment, each demarcated by distinct materials. The plinth in a concrete floor datum, the columns in sleek green terrazzo and the roof plane in a textural clay-toned plaster. On entry and into the main hallway, visitors are instantly met with curated views through rooms to the south-facing garden beyond. This subtle signposting has been engineered via a sequence of skylights, clerestory windows, and glazing which capture pockets of natural light and glimpses of the garden directing the journey and experience through the property.

The client wished to reorientate the property with living spaces towards the garden, whilst also seeking to maximize potential bedrooms for value purposes.



To help achieve this, ConForm introduced a series of clever visual illusions via skylights and a clerestory window within a hitherto landlocked bedroom, opening out to direct views to the garden and providing ventilation. A hidden three-leaf pocket door extends through the living space to close off a further guest bedroom or create a snug when required.

The kitchen comprises sophisticated light oak cabinetry, creating ample room for storage and function whilst delivering added ornamental value with the addition of a perimeter framing detail to the doors. The plinth acts as a visual connection across Terzetto's design, communicating the relationship between the kitchen, hallway, and patio all connected via one unifying datum line.

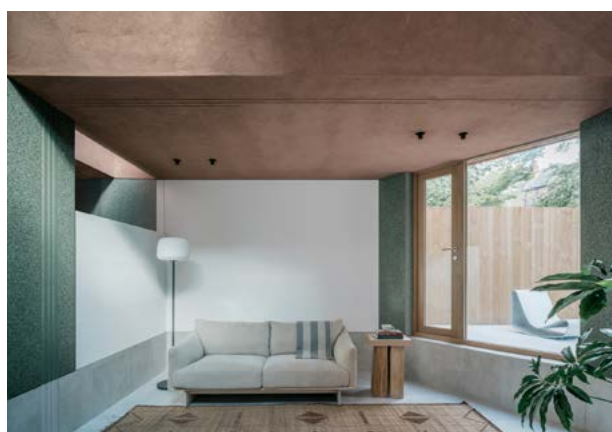
Within the rear living space, ConForm has demonstrated its expertise in precision detailing with the addition of a large trapezoidal skylight, directing natural light into the internal kitchen zone, whilst maintaining privacy from neighboring buildings. Here, materials and concepts come to the fore playing a crucial role in the success of Terzetto's transformation, as the textural clay-toned plaster and green terrazzo come together with the concrete tiled plinth to envelop the space. Beyond the masked storage spaces in the kitchen, the living space opens out to a generous art display wall, naturally illuminated by the skylight.

A nod to the amphitheatrical is experienced here; the concrete plinth and bench make the living space read as a sunken area with an additional winged seating area. The room exemplifies ConForm's



"Within the rear living space, ConForm has demonstrated its expertise in precision detailing"

linear precision and material contrasts, unified by three split datum lines that run seamlessly from the surrounds of the room out to the garden. Terzetto illustrates ConForm's approach to interrogative design, employing bold and innovative use of material to supersede spatial challenges and reinforce original conceptual ideas. The resultant space is a textural and natural home, at one with the elements and its environment.



Architects: ConForm Architects - www.conformarchitects.com

Area: 97 m²

Photographs: James Retief

HUNTER INDUSTRIES AND KAR UK: YOUR COMPLETE IRRIGATION SOLUTION



KAR UK Ltd stands at the forefront of the UK's irrigation wholesale industry, proudly supplying Hunter Industries' state-of-the-art irrigation solutions to landscapes throughout the UK and Ireland. With a rich history dating back to its inception in 1978, KAR UK Ltd has established itself as a trusted source of premium irrigation equipment, perfectly aligning with Hunter Industries' commitment to innovation and dependability. Through this partnership, KAR UK offers an extensive portfolio of Hunter Industries' products, including the acclaimed MP Rotators, and controllers equipped with the revolutionary Hydrawise software, empowering customers with state-of-the-art irrigation technologies meticulously designed for sustainable landscaping.

Hunter Industries' MP Rotators stand as a testament to innovative irrigation nozzle design, revolutionising landscape watering systems. These state-of-the-art nozzles are engineered with multi-stream, multi-trajectory rotating technology, allowing them to disperse water in multiple streams at a controlled pace. This innovative design minimises runoff, enhances soil absorption, and optimises water distribution, ensuring efficient irrigation while conserving water resources. Moreover, the MP Rotators feature customisable options such as adjustable arc and radius settings, providing users with precise control over irrigation patterns to accommodate various landscape layouts and plant needs. Whether used in residential gardens or expansive commercial landscapes, Hunter Industries' MP Rotators deliver unparalleled versatility and efficiency, contributing to the promotion of sustainable water management practices.

In addition to the MP Rotators, Hunter Industries' controllers - including the X2, Pro-HC, HPC, and HCC series - paired with their Hydrawise software,



present a modernised approach to irrigation management. These advanced controllers boast seamless integration with the cloud based Hydrawise app, enabling remote monitoring and management of irrigation systems from any location with an internet connection. Featuring an intuitive interface, customisable settings, and features like weather-based adjustments and water usage tracking, Hunter Industries' controllers and Hydrawise software provide a comprehensive solution for efficient and sustainable landscape irrigation. By optimising water usage and minimising wastage, these innovative technologies help users conserve water resources while nurturing lush, vibrant landscapes.

Hunter Industries' groundbreaking products represent a paradigm shift in the landscape irrigation industry, reshaping traditional practices and setting new standards for efficiency and sustainability. By harnessing cutting-edge technologies and innovative design principles, these products are revolutionising the way water is utilised, ensuring optimal usage while fostering healthy plant growth and vibrant landscapes.

► **For more information, contact KAR UK Ltd on 0161 793 9703, sales@karuk.com, or visit www.karuk.com**



Hunter®

Innovative and Sustainable Irrigation Solutions



KAR UK Ltd distributes Hunter Industries' cutting-edge irrigation technology across the UK, setting the standard for enhanced water efficiency and sustainable landscaping practices.

This collaboration offers innovative solutions tailored to the evolving needs of the landscape and res-com industries, reaffirming a commitment to excellence in environmental stewardship and customer satisfaction.





Image courtesy of Elite Architectural Awnings

ELEVATING OUTDOOR CONSTRUCTION: A DIVE INTO FABRICS FOR PROJECTS FROM KAYOSPRUCE

When it comes to outdoor construction, durability, resilience, and longevity are paramount.

From creating shade structures to building enclosures, the choice of fabric plays a crucial role in the success of any outdoor project. Kayospruce, a leading provider of high-quality fabrics, offers a diverse range of materials and fittings tailored to meet the demands of outdoor construction. In this article, we explore the versatile fabrics available from Kayospruce and how they can enhance your outdoor construction endeavours.

1. PVC, SOLUTION DYED AND COATED FABRICS:

For outdoor construction projects requiring exceptional strength and weather resistance, PVC, Solution Dyed and Coated Fabrics are an ideal choice. These fabrics are constructed to make them highly

durable and water resistant or waterproof dependant on your requirement. From temporary structures like tents and event pavilions to permanent installations such as awnings and canopies, PVC, Solution Dyed and Coated Fabrics provide reliable protection against rain, wind, and UV exposure. Kayospruce offers a variety of PVC, Solution Dyed and Coated Fabrics in different weights and colours, allowing for customization to suit specific project requirements.

2. MESH FABRICS:

In applications where airflow and visibility are key considerations, mesh fabrics from Kayospruce offer an excellent solution. Constructed with open-weave designs, these fabrics allow air to circulate freely while providing partial shade and UV protection.



Image courtesy of C&J Outdoors



Image courtesy of C&J Outdoors

Mesh fabrics are commonly used in enclosures and privacy screens or as ventilation panels. Their lightweight and flexible nature make them easy to install and manoeuvre, while their durability ensures long-term performance in outdoor environments. Kayospruce offers mesh fabrics in various densities and colours to accommodate different construction needs and aesthetic preferences.

3. SHADE SAIL FABRICS:

Shade sails have become increasingly popular in outdoor construction for their ability to provide shade and architectural interest to residential and commercial spaces. Kayospruce offers a range of shade sail fabrics designed to withstand the elements and create visually striking shade structures. These fabrics are engineered for durability and UV resistance, ensuring prolonged exposure to sunlight without fading or degradation. With a variety of colours available, Kayospruce enables architects, designers, and builders to create customized shade solutions that enhance outdoor environments while offering protection from the sun's harmful rays.

4. TENT FABRICS:

From temporary shelters to semi-permanent structures, tents play a vital role in outdoor



Image courtesy of Elite Architectural Awnings

"From creating shade structures to building enclosures, the choice of fabric plays a crucial role in the success of any outdoor project."

construction projects such as events, festivals, and worksite enclosures. Kayospruce supplies a diverse selection of tent fabrics engineered for durability, weather resistance, and ease of installation. Whether you need lightweight fabrics or heavy-duty materials for large event marquees, Kayospruce has you covered. Their tent fabrics are available in various strengths, coatings, and colours, allowing for customization to meet specific project requirements while ensuring reliable performance in challenging outdoor conditions.

5. CNC CUTTING:

Kayospruce not only has the ability to supply Fabrics and Hardware for your outdoor project they can also cut your bespoke design with their cutting edge team and unique large cutting table. Just send us your design files and we will have your design back to you quickly and with all the necessary accessories in one delivery (threads, zips, fasteners etc etc).

CONCLUSION:

Choosing the right fabric is essential for the success of outdoor construction projects, where durability, weather resistance, and performance are paramount. With Kayospruce's extensive range of high-quality fabrics, builders, Interior Designers, architects, and contractors can find the perfect materials to enhance their projects and withstand the rigors of the outdoors. Whether you're constructing shade structures, tents, or temporary enclosures, Kayospruce's fabrics provide the durability, versatility, and reliability needed to elevate your outdoor construction endeavours. Explore their selection today and build with confidence in any outdoor environment.

www.kayospruce.com | 01489 581696

NEW! THOMAS SANDERSON INTRODUCES SMART ELECTRIC PERGOLA AWNINGS



Thomas Sanderson, a leading UK window dressing and garage door specialist, has unveiled a new range of smart electric pergola awnings, launching 12 March 2024.

Offering a more permanent and expansive shading solution than traditional awnings, pergola awnings create an outdoor room, perfect for entertaining, relaxing, or simply enjoying the fresh air.

"With the UK awning market experiencing significant growth and searches for 'outdoor living furniture' increasing by 67% in 2023 vs 2022*, people are now spending more time outdoors than before the pandemic. Thomas Sanderson is responding to the ever-growing trend of creating luxurious outdoor living spaces," says Abi Clewley, product manager at Thomas Sanderson.

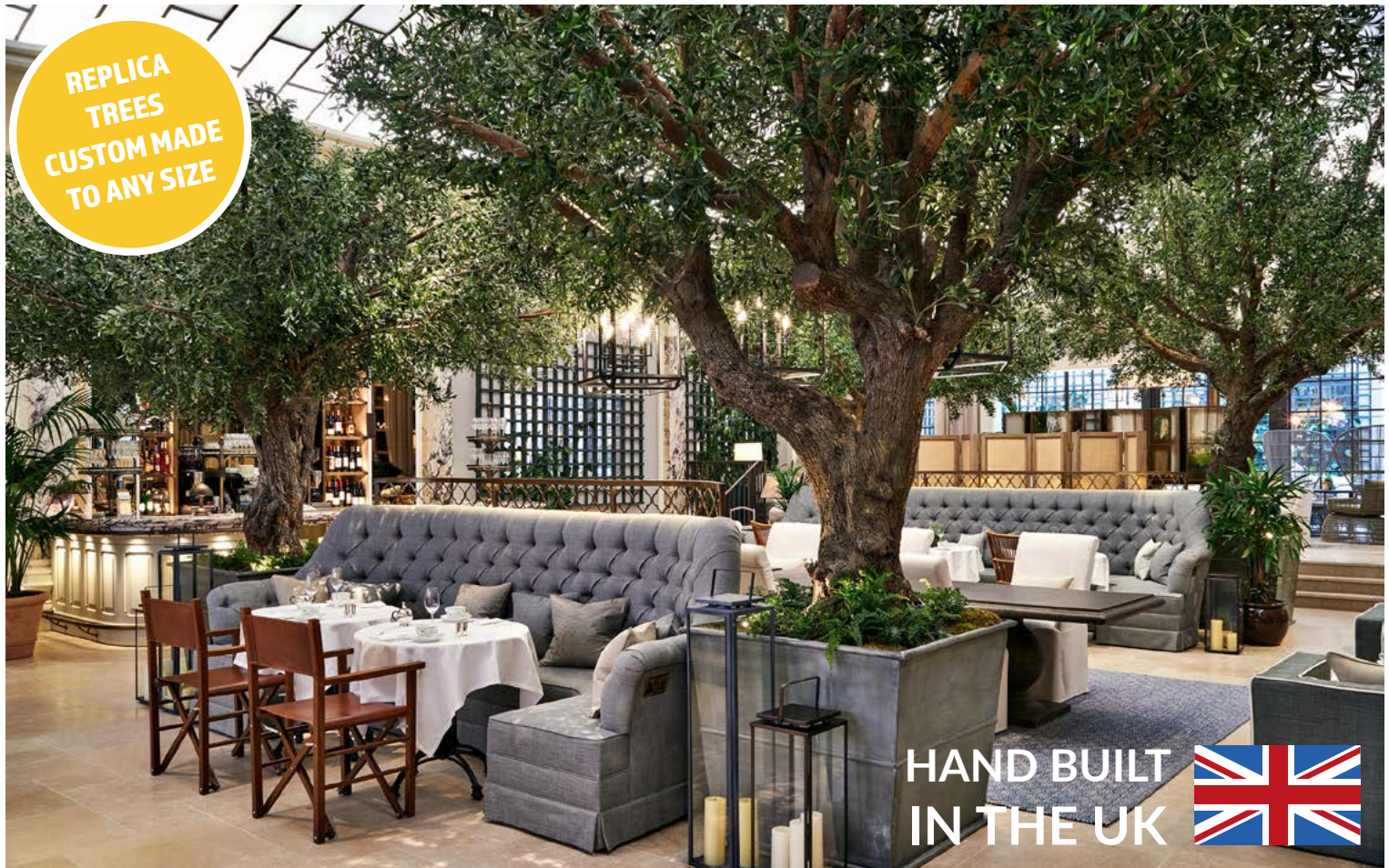
"Our premium pergola awnings cater to this demand perfectly. Blurring the lines between indoors and out, they offer extensive coverage, are ideal for larger areas and come with a host of smart features for ultimate convenience, like app, remote or voice

control for shade levels, lighting, and even heating.

Crafted with premium materials and available in a wide range of on-trend fabric colours and frame finishes, these awnings are not only highly durable but also stylishly complement your home's architecture. They provide exceptional sun protection, ensuring a comfortable outdoor experience even on the brightest days. And thanks to their versatile design, they're engineered to withstand various weather conditions, making them perfect for enjoying your outdoor space year-round. Plus, with our professional installation and ongoing support, you can enjoy peace of mind knowing your pergola awning is built to last."

Available in 45 retractable fabrics, with optional LED lighting and heating, these awnings offer the perfect blend of functionality, style, and comfort.

► **Prices from £2,199. For more information on the full range of outdoor products visit: www.thomas-sanderson.co.uk/awnings**



ARTIFICIAL GREEN WALL



ARTIFICIAL TREES



**EXTERIOR
GRADE**

ARTIFICIAL HEDGING

WWW.TREELOCATE.COM

GET IN TOUCH TO DISCUSS YOUR PROJECT: [✉ info@treelocate.com](mailto:info@treelocate.com) [☎ +44 1668 219219](tel:+441668219219)

FireSilx
FLAME RETARDANT FOLIAGE

INHERENTLY FIRE RETARDANT ARTIFICIAL FOLIAGE

✓ TESTED TO MEET WORLDWIDE FR STANDARDS

BS 5867 EN 1021 DIN 4102 NFPA 701

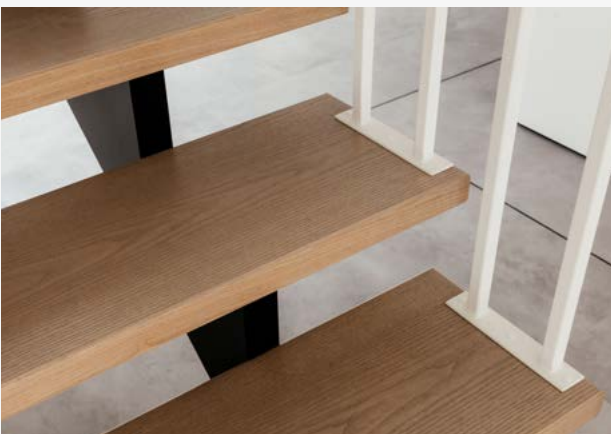
FIND OUT MORE - WWW.FIRESILX.COM



THE STAIRCASE IS THE HEART OF THE HOUSE

Staircase is a functional part of architecture, which must constantly combine comfort, safety and long-term quality.

Concerning the modern interior, the staircase is always an essential component, specifying the space esthetics. It complies with a housing common style; herewith, it is self-sufficient as an art object.



The matter is the following: is it possible to implement such art-staircase within mid-segment of estate property? Let's consider the real example.

The customers - young couple with two children - have applied for design project of their new house interior. The task was specified as development of modern housing without any extra-decorations, but with its own spirit.

Preliminary staircase layout has already been specified, but its design was started from scratch. According to the plan, the staircase is the first thing we notice when entering the house. Since there will never be the second chance for the first impression, it was decided to create an eye-catching structure that would set style of space. L-shaped form has been selected right away. This decision allowed separating the staircase visually from the entry way and connecting the windowsill with the landing.



The structure minimalism is achieved by the textures' balanced combination. We have refused intentionally from simulation and selected the natural materials: concrete, wood, and metal. The lower flight of staircase from concrete. From the entry way it is closed by the concrete bay where the shoe cupboard has been placed. From the living room it passes into the floor common space, simulates it. The suspended ceiling battens have been installed instead of the standard railings. Besides the trend design this structure is safe, easy-to-use, and durable.

"Preliminary staircase layout has already been specified, but its design was started from scratch."



The main flight of staircase includes the metal string and wooden steps. Wood still remains the most atmospheric material for interior. We have selected ash wood. It is durable, resistant to the loads and has the high esthetic parameters. The absence of risers simplifies the structure and provides with full and ready access of light. Thereby the house looks like novel airy space, changing due to lighting.

The staircase became the evidence that bold design and high artistic standards can be implemented not only in premium segment. It fully reflects the spirit of the time – environmental compatibility, identity and simplicity.

PATENTED JULIET BALCONY PROFILE ARIA



Our ARIA Juliet System is not only aesthetically pleasing, but also meets all safety requirements. The Pure Vista Juliet system offers cost-effective and effortless installation. With ARIA, we aim to provide a balcony that makes you feel connected to the outside world. You can enjoy fresh air and maximize your views with no handrails or obstructions. In addition, the ARIA system allows for ample natural sunlight to stream into your home.

The system is suitable for glass lengths of up to 3000mm and a height of 1100mm. You can use this channel for fascia or side (reveal) fixing, and it is tested up to 0.74kN per meter fixing into concrete and steel. The Aluminium profiles are anodised to 25 microns, ensuring that it is protected against the elements. The glass is held securely in place with a solid aluminium block. The system is designed from high-quality materials to ensure durability and the high quality you would expect from Pure Vista.

HERE ARE THE TOP 5 REASONS YOU WILL LOVE ARIA!

1. LIGHT If you're looking to increase the amount of natural light in your room a Juliet balcony is the perfect solution! Using a full-length glass door, this balcony system maximises the amount of sunlight that enters your space without obstructing the view.

2. SAFETY Safety is our top priority. That's why the solid glass panel is installed close to the wall, reducing the chance of small items falling through gaps. Not only that, but the system is also strong and secure, tested for safe domestic installations. Unlike

others designs, the glass is held on a strong solid aluminium block.

3. INCREASED VENTILATION With a Juliet Balcony installed, you'll enjoy increased ventilation and fresh air flow into your home. Plus, the channel profiles used for this balcony system are thin and subtle, making it a perfect match for any property.

4. SUBTLE IN APPEARANCE The channel profiles used for a Juliet balcony are thin in comparison to traditional glass balustrade. They will not be seen from inside the room and are subtle enough to suit any property from the outside.

5. COST Best of all, the ARIA is much more cost-effective than traditional balconies. Supplied in one compact box and delivered to your door, this balcony system is also popular for its simple storage. In most cases, you won't even need planning permission for a Juliet Balcony but please check with your local authority before work begins.

► Phone us 01208 261040, email us sales@pure-vista.com or visit the website www.pure-vista.com.





NEW PATENTED JULIET BALCONY

A stunning new Juliet System from Pure Vista that meets all the required safety measures in a gentle and beautiful way.

Unlike other brands, **the glass is secured with a strong aluminium block.**

- ✓ Up to 3000mm wide glass
- ✓ 13.5mm - 21.5mm glass thickness
- ✓ Strong and designed to last
- ✓ Domestic installation

Order online, via email or over the phone

www.pure-vista.com

+44(0)1208 261040 sales@pure-vista.com



An Introduction to Martyn's Law and the Relevance of Anti-Terror Glass Balustrade CPD session is available to book now.

During this CPD certified 1-hour long session you will learn all about anti-terror glass balustrade, force loading, safe substrates for installation and key information on Martyn's Law.

The session will end with a Q&A where we can discuss your upcoming projects and make sure you leave this CPD with an increased knowledge on Martyn's law and anti-terror glass balustrades.

REGISTER HERE FOR SESSIONS BEGINNING IN MARCH 2024

WWW.PURE-VISTA.COM



GOLMAR SYSTEMS UK: PIONEERING EXCELLENCE IN DOOR INTERCOM SYSTEMS



Established 70 years ago, Golmar has been a stalwart in the global market, leaving an indelible mark on the landscape of door intercom systems. With a dedicated hub in the UK for the past two decades, Golmar Systems UK continues to uphold the brand's legacy of excellence.

A LEGACY OF SERVICE AND INNOVATION

As an integral part of the Golmar family, Golmar Systems UK takes pride in maintaining uncompromising standards of service. Their commitment extends beyond mere transactions as they focus on fostering lasting relationships with clients. From door intercom systems to access control and CCTV, Golmar Systems UK ensures seamless integration and reliable performance.

EMPOWERING INSTALLERS: BUILDING A NETWORK OF DISTRIBUTORS

Golmar Systems UK recognizes that time is of the essence for installers. To expedite system installations, they are actively building a robust network of distributors. Whether it's a standard configuration or a customized solution, Golmar Systems UK ensures swift access to quality products. Their expert team assists in specifying the right components, tailored to meet specific project requirements.

COLLABORATION FOR CONTINUOUS IMPROVEMENT

In the spirit of innovation, Golmar Systems UK collaborates closely with Golmar in Spain. This dynamic partnership ensures a constant evolution of their product range. Feedback from installers and end-users is invaluable, driving enhancements with each new product release. Golmar's commitment to improvement is unwavering.



THE GOLMAR ADVANTAGE

Style Meets Functionality: Golmar offers a compelling blend of aesthetics and practicality. Their Sixty5 range of panels exemplifies this ethos. Whether it's the modern classic digital keypad or the sleek touch screen panel, Golmar bridges style and functionality seamlessly.

Key Features:

- **Audio/Video Communication:** Crystal-clear communication for enhanced security.
- **Call Progress Confirmation:** Audible and visual cues keep users informed.
- **Door Open Confirmation:** Instant feedback for peace of mind.
- **Coded Access:** Secure entry with personalized codes.
- **Built-in Proximity Reader:** Streamlined access control.
- **Aluminium or Steel Finish:** Versatility to match any aesthetic.
- **Visitor Display:** Deters unwanted intruders.
- **2-Wire Technology or IP:** Flexibility for diverse installations.

CONCLUSION

Golmar Systems UK remains at the forefront of innovation, offering competitive solutions that cater to both form and function. From cozy homes to sprawling apartment complexes, Golmar's integrated systems redefine safety and convenience.

For more information, visit Golmar Systems UK and experience the future of door intercom technology.

www.golmarsystems.com





Sixt / 5 TOUCH

Golmar was first establish in Barcelona, Spain 70 years ago, and has enjoyed a world-wide presence for many of those years, including a dedicated hub in the UK for the last 20 years



THE AWARD WINNING FIRE ENGINEERING SOLUTION

Fire Scrutineer

The Fire Scrutineer concentrates on the 3 gateways of a construction project:



Design



Construction



Pre-Occupation

At each gateway, Global provide a mixture of desktop analysis and site visits to ensure that all design and actual build details are compliant, installed correctly and of good workmanship. The Fire Scrutineer records and assesses all aspects of the fire safety of the project to show due diligence and provide evidential, auditable records for the O&M manuals, in line with Regulation 38.

0115 721 2930

info@globaltechnicalservices.co.uk

globaltechnicalservices.co.uk

ASFP
Innovation of
the Year
Winner

DESIGN, CONSTRUCTION AND PRE-OCCUPATION

In line with the proposed Independent Construction Assessor (ICA) framework, Global's Fire Scrutineer role has developed following the Hackitt Working Group Review and subsequently the implementation of the new Building Safety Act. This highlighted the need for specialists, such as fire engineers, fire scrutineers and auditors to complete inspections and provide support throughout the Golden Thread. Global are able to provide specialist knowledge and information on all areas of fire safety with your projects. This role is necessary to provide reassurance and prevent loss of life in the event of a fire once the building is occupied, ensuring our clients, their staff, residents and guests have the best chance of survival if disaster strikes.

The Fire Scrutineer role concentrates on the three gateways of a construction project: Design, Construction and Pre-Occupation.

At each gateway, Global provide a mixture of desk top analysis and site

visits to ensure that all design and actual build details are compliant, installed correctly and of good workmanship. The Fire Scrutineer records and assesses all aspects of the fire safety of the project to show due diligence and provide evidential, auditable records for the O&M manuals, in line with Regulation 38.

The scope is divided into 3 main stages, which are all aligned with the proposed 3 Gateways under the new Building Regulations. The below schedule is set out by Global as a recommended minimum requirement to ensure compliance with Building Regulations. Global offer their services through these stages, giving the client peace of mind that the appropriate steps are in place for full compliance.

Fire Scrutineer Stage 1 - Design Stage

This involves early engagement with architects and designers to review their specifications and fire strategies. This service is to help prevent issues and conflicts during the construction stage,

with issues around compartmentation and compliance with selected manufacturers details and British standards.

Fire Scrutineer Stage 2 - Construction

During this stage of the Golden Thread, Global are involved in the construction phase of the new build or refurbishment. We complete regular inspections of workmanship to make sure the installations are completed in line with designers/architects details and installed as per manufacturers tested solutions.

Fire Scrutineer Stage 3 - Pre-occupation

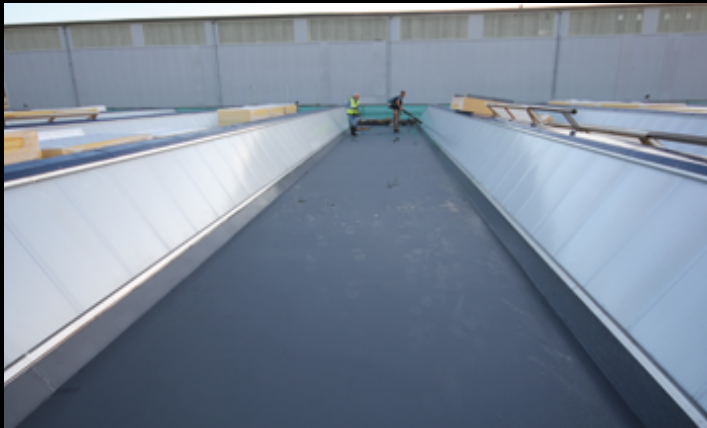
The pre-occupation stage involves the review of all commissioning certificates. This is to ensure everything is signed off in time for pre-occupation FRA, along with all documentation required for Regulation 38. This would be handed over to the Responsible Person after the building is complete.

www.globaltechnicalservices.co.uk



ULTIMATE FIRE PROTECTION

EUROCLASS A1



A1 Non Combustible Magply Recovery / Protection Roofing Board

Magply recovery and protection boards have been developed to meet the roofing industry need for a cost-effective, lightweight and fireproof board that will provide an inert and stable separating layer for all types of waterproofing overlay applications. It can also be used as a tough, durable and reusable protection layer over completed installations.

Available in 6mm, 9mm and 12mm thicknesses, to suit both light and heavy traffic applications, the board can be easily cut to fit around penetrations and at abutments and can either be mechanically fixed or bonded into position when used in overlay applications.

6mm Magply will achieve B-roof T4

18mm and 20mm also available for roofing.



Safe Sure Secure

FOR MORE INFORMATION VISIT

magply.co.uk

+44 (0) 1621 776 252

ollie@magply.co.uk

APC FORKS



Established in 2008, APC Forks has its Head Office in Stockport but mainly operates from its central location in the Midlands, giving excellent access to national coverage. Filling a problematic void in the market, APC Forks can satisfy the growing need for short and long term hiring of the JCB Teletruk. Since its inception, the company has grown its high quality fleet to encompass 150 plus machines, offering both two wheel and four wheel drive options to cater for the variable site requirements of its wide range of customers. The fleet is constantly growing and most units are less than three years old, ensuring customers are getting high quality, up to date equipment.

“Our hiring services are highly flexible, so our customers can get the machine without having to commit to a long-term contract,” explained Stuart Hunter, Director. Indeed, the JCB Teletruks are hired straight from APC Forks rather than via a finance house, where companies can be locked in a deal for extensive periods of time. With APC Forks’ flexible hire service, which ranges from just one week to seven years, customers can use the machine for as long or short amount of time as they need. Indeed, with high levels of uncertainty currently in the marketplace, such flexibility is essential; thanks to APC Forks, a company can react quickly to new business opportunities and if a project does not go ahead, equipment can be returned without any penalties.

The JCB Teletruk is unique in that it combines the functions of a counterbalanced forklift with those of a re-handling shovel, making it the most flexible forklift on the market today. The entirety of APC Forks’ fleet has a quick-change front, which makes switching between various attachments quick and easy. These attachments can include forks, sidershifts, buckets, bale clamps, rotators, and many more. Furthermore, JCB Teletruk’s all-round visibility is superior to a conventional forklift, making it one of the safest machines available.

APC Forks’ fleet of machines feature generic specifications in order to cover a multitude of applications, including solid tyres and extra hydraulics which make them perfect for the vast variety of applications. Indeed, the JCB Teletruk boasts unique features and benefits over any conventional forklift, and APC Forks maintains a flexible approach to try and marry a hire agreement to suit a customer’s needs.

“The JCB Teletruk is great for a vast range of applications,” explained Stuart. “These include waste management, builders’ merchants, grounds maintenance, inner city projects, Crossrail, London underground, and many others.”

Certainly, the uses of the JCB Teletruk are versatile and numerous. “One of the JCB Teletruk’s key advantages is its telescopic boom, which allows for the loading and offloading on one side,” explained Stuart. This means that if a yard is tight on space or a customer needs to load and offload on a public highway, safety and efficiency is ensured. The JCB Teletruk is also a particular favourite with the waste industry, thanks to its high flexibility and ability to deal with any terrain with two or four wheel drive options. What’s more, the machines can be fitted with fire suppression system, making it ideal for the prevention of fires in the hardest environments. The JCB Teletruk also has no mast or carriage, meaning it is ideal when working with a bucket and grapple in challenging applications.

“We now have an ever increasing fleet of electric JCB Teletruks, which will only enhance the green option for our more environmentally conscious customers and applications.” The TLT30-19/35-22E gives customers 1,900/2,200 kg capacity at two metres, and are also available for nationwide hire.

Looking to the future, APC Forks will be maintaining its high quality and versatile services, regularly enhancing its fleet. “We update our fleet on a regular basis to keep up with the latest product enhancements, ensuring we are offering up to date equipment for our customers. We want to keep growing, and to continue to support infrastructure and industry.”

The fact that APC Forks’ unbeatable adaptability is underpinned by committed customer service and quick response to queries makes the company the number one choice for companies in need of flexible JCB Teletruk hire. If you would like to find out more information on how APC Forks can help you, head to the website or get in touch using the contact details below.

► **Contact T: 0845 074 3335**
www.hireajcbteletruk.co.uk
www.electricteletrukhire.co.uk

APC Forks

0845 074 3335

www.hireaajcbteletruk.co.uk



HANDLING YOUR FUTURE TODAY

"Your uptime is our priority"



"Fixed monthly cost,
includes servicing
and maintenance"

"Short term flexible
hire agreements
available"

BUILDING FOR THE FUTURE: CREATING FURNITURE FROM V&A PACKING CRATES



As part of the V&A Museum’s commitment to sustainability it has developed two exciting furniture upcycling initiatives using surplus stock of its exhibition pack crates. These initiatives demonstrate how waste materials can be given a meaningful life beyond a limited purpose.

In one initiative, nine designers were partnered with clients from the 999 Club, a homelessness charity in London, to co-create a piece of furniture that can be taken into temporary accommodation. The other gathered designers to create tables and chairs, also using the waste packing crates, for a Food Waste Feast that was held at the Day of Design event.

Throughout the project Festool power tools were used. James Wilson, Marketing Manager at Festool UK said “We are delighted that Festool products were part of this sustainability initiative, that has enabled expert designers/makers to share skills with people who have experienced homelessness enabling them to create unique pieces of furniture.”

The project had a five-week turnaround time from design and creation to exhibiting at the Day of Design Festival that was part of the London Design Festival. The short time around time for the project meant that the power tools used needed to be sturdy, reliable and deliver accurate results, fast.

Furniture designer and maker, Tom Olesen (@tomtedesign) joined the project to mentor one of the 999 Club’s clients. “It is the small innovative features of Festool tools that make life easier. For example, on the router OF 1010 the spindle stop means that changing cutters is simple, so we can get the job done quickly” Tom explained.



Zoë Louizos, Sustainability Co-ordinator, V&A said: “We are thrilled to have been able to use Festool products. This project makes valuable use of our surplus materials and showcases creative solutions to waste and provides a platform to support a diverse community of designers and makers, demonstrating design solutions to environmental and social issues we currently face.”

► **Festool is a manufacturer of premium power tools for professional tradespeople. To discover more about Festool please visit www.festool.co.uk and for more on the project please visit <https://www.vam.ac.uk/blog/design-and-society/upcycling-our-waste-crates-in-response-to-ldfs-day-of-design-challenge>**



WE'RE NOW OFFICIALLY LIVE WITH OUR NEW WEBSITE

Screwshop primarily specialise in screws, fixings and fasteners for the DIY, hardware, building, joinery and furniture manufacturing sectors. It took more than 6 months of dedicated hard work and sincere efforts of our team members to come up with a creative solution that will help everyone buying on our Screwshop site.



Have a look to at www.screwshop.co.uk to see for yourselves -

- Faster than ever
- Equipped with enhanced new features
- Powered by Easy-to-navigate functionality
- More user-friendly

We are dedicated to offering you, our customers, competitive prices from our ever-increasing range of imported products and expertise in more localised sourcing, excellent service and a versatile approach to a wide variety of finished and

packaging options. With that, we also invite you to connect with our wonderful family on LinkedIn, Facebook, Instagram, and YouTube to stay up to date and engaged with company announcements. Moreover, if you are into exploring the unknown, be sure to head over to check our blog posts and newly developed website sections.

If you have queries, comments, suggestions for us, or can't find what you're looking for, please share with us at Screwshop or call us on 0121 559 8866 - we are here to help.

Thank you from all at Screwshop.

www.screwshop.co.uk
sales@screwshop.co.uk

 **screwSHOP**.co.uk

DIY • Trade • Business

"Let us surprise you - Lowest Online Prices"

• Ironmongery & Builders Metalwork

• Silicones/ Sealants

• PPE

• Lowest Prices

• Next Day Delivery throughout the UK



Home of **TURBOQWIK** and **RHINO SCREWS**
 THE PRECISION MULTIPURPOSE WOODSCREW

0121 559 8866 • sales@screwshop.co.uk

Makita

18V LITHIUM-ION

18V + 18V → 36V

CLAIM FREE 18V BATTERIES & BLOWERS.



WITH SELECTED 18V & TWIN 18V GARDEN PRODUCTS

Free 1x BL1850B 18V LXT 5.0Ah Battery or 1x DUB185Z 18V LXT Blower (Body Only) eligible for redemption with selected RT, RTE, RTX and RT8 suffix machines. Free 2x BL1850B 18V LXT 5.0Ah Batteries or 1x DUB184Z 18V LXT Blower (Body Only) or 1x DUB362Z Twin 18V LXT Blower (Body Only) eligible for redemption with selected PT2, PT4, PG2 and CT2 suffix machines. Promotion runs from 1st February to 31st May 2021. Claims must be made within 28-days of purchase. Terms & Conditions apply. See website for details.

makitauk.com/redemption

HUGHES GROUP



The brief called for a complete refurbishment of a three bedroom terraced house in Chelsea. With both light and space in short supply, the client asked for a basement to increase the internal space to enable 4 ensuite bedrooms to be built.

Camilla's Danish roots have inspired a clean minimalistic look with quirky features bringing the whole house together and creating a beautiful home.

The first floor bedroom is light and airy leading via large sliding glazed doors onto an external terrace. Bespoke shower doors have been manufactured by the window company giving a modern look to the ensuite bathroom.

Externally the property benefits from a wooden decked terrace with recessed lights, a space for entertaining and cooking. We have built on a seating area with concealed storage and planters to enhance the beauty of the external space.

The large Master bedroom has a bespoke walk in wardrobe with recessed lighting and plenty of storage space. The magnificent master bathroom has been clad in marble which has been delicately book matched to create a stunning effect. Lighting effects have been utilised to create a calming enjoyable space for relaxing.

Hughes Group have taken the concept and ideas from Camilla and turned this into reality. From the bespoke joinery integrated lighting in each of the bedrooms reflecting the needs of the client to the luxury bathrooms chosen by the client and brought to life by Hughes Group.

Underfloor heating has been installed throughout the property to provide comfortable heating with a ducted A/C system integrating discrete grills providing cooling in the hotter months, creating a seamless look in keeping with the overall theme of the property.

To emphasize the light and space large Crittal windows were installed along with large glazed doors in three of the bedrooms with access to external seating areas. The basement bedrooms enjoy access to a small Moroccan themed patio with a beautiful large living wall to enhance the enjoyment of the outside space.

The property benefits from a heat recovery system, Led lighting throughout, well insulated and triple glazed windows to ensure minimal heat loss and to reduce energy consumption.

As you walk into the property you are met with a large living area and a bespoke kitchen seamlessly integrating into this family room.

A cleverly hidden utility room behind bespoke doors, leading to a cloakroom. The floor layout has been planned to make full use of the space provided with features to ensure essential items are easily accessible but hidden from sight.

The staircase was a special request from the client and the result is spectacular making a feature from functional staircase. The ground to first floor staircase leads to a small landing with natural light from a light tunnel whereas the staircase to the basements leads down to a study area with the walls clad in Penguin book wallpaper supplied by Osbourne and Little.

Throughout the property we have installed a Sonos system and control 4, with sleek ceiling speakers and a centralised control ipad with the additional functionality on each of the resident's phones. It is a simple and easy to use system providing the residents with Audio visual control for each room.

At Hughes Group we love working with our clients and bringing their ideas to life, making a home to be proud of and live comfortably in.

► 01344 299889 | info@hughesgroup.co.uk
www.hughesgroup.co.uk

Design Buy Build



The UK's leading self-build publication, keeping up-to-date with the latest news and product information within the self build, property developing, architectural and interior design industries.

Self Builders • Property Developers • Architects • Interior Designers

FREE DIGITAL MAGAZINE SUBSCRIPTION

Subscription enquiries:

Call - 01227 936971
editor@mhmagazine.co.uk

Advertising enquiries:

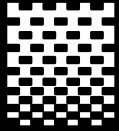
Chris Nicholls - 01227 936971
chris@mhmagazine.co.uk

Editorial submissions or enquiries:

Antony Holter - 01304 806039
editor@mhmagazine.co.uk

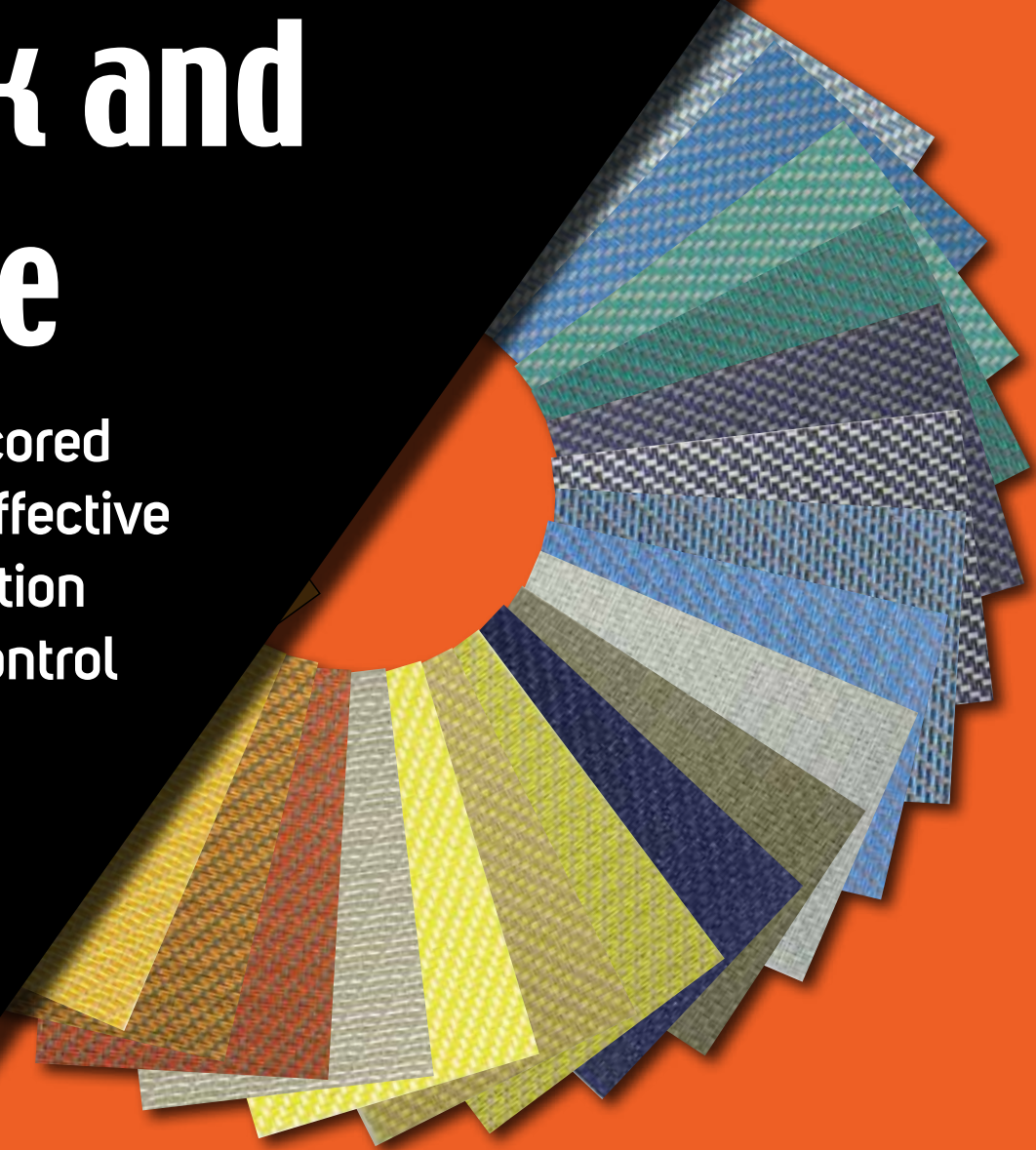
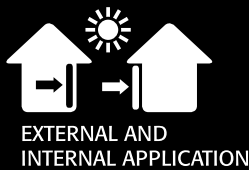


SUBSCRIBE TODAY!



Life is not just Black and White

Fibreglass cored
fabrics for effective
solar protection
and glare control



Mermet technical fabrics are available in a wide range of double sided colours and all are fire resistant to BS 476 Pt 6 Class 0



Roller blinds



Roman shades



Decorative panels



Vertical blinds



Velums



Skylight blinds



Roof windows blinds



Tensile structures



Projection shades



Garden shades



MERMET^{LIK}

SUN CONTROL TEXTILES

T: 01989 750910 E: info@mermet.co.uk www.mermet.co.uk