

REFURBISHMENT & RESTORE

HIGHBURY HOUSE EXTENSION

This house extension and refurbishment transforms a Victorian terraced property in a Highbury conservation area.

YORKSHIRE SPECIALIST TIMBER FIRM BOWS TO TOUGH SPEC

Yorkshire bespoke timber joinery manufacturers David H Wright were engaged to work on this bow-windowed terraced cottage in Harrogate.

TOTAL HOUSE REFURBISHMENT AND REAR FAMILY KITCHEN

Large side and rear extension to form 2 additional bedrooms and extra living accommodation.

COVER PROJECT

A LONDON TERRACE TRANSFORMED WITH A
MODERN BALCONY STYLE EXTENSION

IQ GLASS



Have You Identified An Issue With Your Property?

If you have identified an issue with your property then it makes sense to call in an expert.

Our specialised custom developed equipment and method often avoid costly rebuilding and are more sympathetic to the building, less intrusive to the occupants and save time and money, we are the experts you're looking for.

Cracking Wall/Brickwork



Failing Brickwork



Brick Arch Failing



Failing Lintel



Bowing Wall



Bay Window Movement



Cavity Wall Ties Failing



Balustrade Wall Issues



Embedded Steel Corrosion



Failing Brick Slips



Concrete Frame Building Defects



Large Panel System building (LPS Blocks)



With 20 years of masonry repair and reinforcement expertise, as leaders in our field, as technique and equipment innovators and as a company dedicated to carefully, sympathetically and promptly resolving any masonry, brickwork or wall stabilisation issue, we are the experts you're looking for.

01227 721255

www.actionwallties.com - enquiries@actionwallties.co.uk

We cover greater London and the South East area



Refurbishment & Restore

Our Team

Editor in Chief

Antony Holter
T: 01304 806039
E: editor@mhmagazine.co.uk

Editorial Manager

Claire Morgan
T: 01304 806039
E: claire@refurbandrestore.co.uk

Sales Director

Sophie Plowman
T: 01304 806039
E: sophie@refurbandrestore.co.uk

Business Manager

Josh Holmes
T: 01304 806039
E: josh@mhmagazine.co.uk

Studio Designer

James Sayer
T: 01304 806039
E: james@mhmagazine.co.uk

Publishing Director

Martin Holmes
T: 01304 806039
E: martin@mhmagazine.co.uk

Accounts

Sue Wallace
T: 01304 806039
E: sue@mhmagazine.co.uk



MH Media Global Ltd
Office 15, Second Floor, Innovation House,
Discovery Park, Ramsgate Road,
Sandwich, Kent, CT13 9FD

Cover Image Courtesy of:
82mm – Malcolm Menzies

IQ Glass

Every effort is made to ensure the accuracy and reliability of material published in Refurbishment & Restore however, the publishers accept no responsibility for the claims or opinions made by advertisers, manufacturers or contributors. No part of this publication may be reproduced or transmitted in any form or by any means, mechanical, electronic (including photocopying) or stored in any information retrieval system without the prior consent of the publisher.

Contents

www.refurbandrestore.co.uk

Issue 12 2018

Case Studies

04-08 Highbury House

This house extension and refurbishment transforms a Victorian terraced property in a Highbury conservation area.

16-17 IQ Glass

Contemporary Glazing: A London terrace transformed with a modern balcony style extension.

20 Taylor & Co

Large side and rear extension to form 2 additional bedrooms and extra living accommodation to an existing 1970s detached house.

24-28 Hong Kong House

The Hong Kong House is a private extension and renovation project, completed in late 2017 by Winchester based architects AR Design Studio.

34-36 Centor

The couple decided to embark on an ambitious extension project that would enable them to enjoy more of the views from their property.

42-44 Bridging London

Wilcox found a triplex warehouse in Shoreditch and contracted 1.61 London to develop and design the 1,800 sq ft building.

50 Rex Place

Rex Place is located in the heart of Mayfair Village, a stone's throw from Hyde Park and the boutiques of Mount Street.

Featured Categories

Editors Choice	09-15
Bathrooms & Kitchens	21-23
Coatings, Sealants & Paints	29
Doors, Windows & Fittings	30-41
Floors & Flooring	45
Heating & Ventilation	48-49
Interiors & Interior Design	50-54
Landscaping & External Works	61
Lighting & Electrical	65-67
Roofing & Cladding	72-74
Safety & Security	76
Timber & Timber Frame	77
Tools, Plant & Equipment	81



HIGHBURY HOUSE EXTENSION

‘A POLISHED HOUSE’

Architecture for London



This house extension and refurbishment transforms a Victorian terraced property in a Highbury conservation area. The brief was to create open plan spaces with an improved relationship to the garden, and a kitchen that could be enjoyed as a social space. The original kitchen was dark, and had a very low ceiling height of just over two metres.

Works included the demolition of the poor quality conservatory and original rear rooms at both ground and first floors. This allowed a double height space to be created in the new kitchen.

A bespoke polished stainless steel chandelier adds drama and the reflections emphasise the verticality of the double height space. Polished stainless finishes are continued internally with a recessed stainless display case and externally with cladding details.



Tall, 3.1m fine framed glass doors allow uninterrupted views to the exterior, and a sculpted ceiling profile with curved plasterwork leads the eye toward the garden.

The previous narrow corridor was unsuitable for carrying large items through to the kitchen, so the ground floor plan was reconfigured and a more generous circulation route created. This now leads through the reception rooms, with a large opening to the kitchen connecting the spaces and allowing good natural light levels in the rear reception room. The polished concrete floor of the kitchen provides a uniform textured surface that continues into the garden, and this matches the extension cladding.





The garden design features a bespoke timber fence with planters in limestone.

Architecture for London Director Ben Ridley on the environmental design:

“The existing conservatory was very poor in terms of environmental performance. The quality of construction and entirely glazed design contributed to significant heat loss in winter, and excessive solar gain in summer.

In demolishing the conservatory and replacing with a highly insulated contemporary structure, the project improves the performance of the existing building and exceeds the requirements of building regulations. The project features a range of sustainable features, including a wet underfloor heating system, locally sourced FSC douglas fir flooring, draft proofing to entrance hall, AAA rated appliances, aerated shower and basin mixers, dual flush WCs and LED lighting.”





CREATE A STANDOUT PROPERTY WITH CEDRAL

With the days getting shorter and the colder weather on its way, your attention may now turn to sprucing up your home in time for the winter.

The exterior of your property is an important aspect of any renovation, providing the opportunity to create a standout home. One way of achieving this is with Cedral fibre cement cladding, which can help add style and individuality to your property.

As a homeowner, renovations offer you the chance to completely update the style of your home. Fibre cement cladding, such as Cedral, can be fitted on top of your home's existing structure and can be designed to complement windows, doors and other external features.

The lightweight nature of Cedral adds to a short installation time, making it an



ideal solution if you're looking to give your home a quick refresh or a complete transformation.

Cedral has been specifically designed with its multi-layered fibre cement structure, offering substantial strength that can withstand the harshest of weather conditions, such as sunlight, wind and rain. The material offers a minimum life expectancy of at least 50 years and has a Class A fire performance rating.

Available in two applications, Cedral Lap and Cedral Click fibre cement cladding offers a range of 21 colours and two woodstain effects, across four palettes - mineral, forest, earth and ocean.

As fibre cement cladding is available in planks of set sizes and is thinner than concrete, the material provides a sleek and streamlined effect. Cedral can be installed both horizontally and vertically which enables you to create a bespoke design tailored to you.

For a New England style, Cedral Lap can be installed by overlapping the planks to provide a traditional clapboard effect, with each board concealing the fixings of the board beneath for a perfect finish.

If you'd prefer a more contemporary feel to your property, Cedral Click is the UK's first and only fibre cement flush fitting tongue



and groove weatherboard material, offering a sleek exterior.

Cedral Lap and Cedral Click fibre cement cladding materials offer homeowners the ideal solution for completing self-build or renovation projects with ease. For further details about Cedral and to request your free samples visit: www.cedralsidings.com

T: 0844 264 0094

E: info@inspectas.co.uk

W: www.inspectas.co.uk

UKAS accredited asbestos consultancy.





WHAT WE DO

There's a new, easy way to protect your business and your home from the dangers of asbestos. It's the Inspectas way.

No more unreliable tradesmen. No more confusing jargon. No more mountains of paperwork. Our no-nonsense approach is all about making it as stress-free and speedy as possible to stay safe and comply with all the relevant laws.

WHAT TO EXPECT

Reassurance. That's what you want and deserve to get when you pay someone to sort out your asbestos business. And it's exactly what you'll get from us – just ask one of our satisfied customers (that's all of our customers by the way).



ABL: FASTER, TIDIER, SMARTER

Whether it's a small studio in need of an update or a huge headquarters overhaul, ABL are here to support you in your office refurbishment or fit out project. ABL's extensive range of office furniture accessories are all designed to be safe and stylish, providing the finishing touches to a modern workspace.

All of ABL power modules are manufactured in-house and deliver discreet, reliable power and data connectivity to desks and conference tables, enabling full compliance with relevant British Standards. The addition of ABL's Smart Charge technology can also power a range of devices quickly and safely.

Monitor arms and CPU holders provide space-saving solutions while also protecting employee health and safety, and ABL's cable management products keep wires safe and tidy, completing the finished look and functionality.

Contact ABL's professional and friendly sales team on 0800 082 1444 or sales@abl-uk.com for more information or advice.



CISTERMISER LAUNCHES INNOVATIVE TEMPERATURE MONITORING SYSTEM LINKTHRU

Intelligent washroom controls and water efficiency specialist Cistermiser has launched LinkThru, the groundbreaking temperature-monitoring platform that is set to change the way hospitals and healthcare facilities manage infection control.

Approved Code of Practice and Guidance L8 (fourth edition), published by the Health & Safety Executive (HSE) in 2013 with technical guidance published separately in HSG274, states that all duty-holders, including employers, those in charge of premises

and those with health and safety responsibilities for others, have a responsibility to manage and prevent the onset of Legionnaires' disease from potential legionella contamination of a building's water systems.

The report seeks to combat legionella in a practical manner, laying out a set of guidelines for those in a position of responsibility to follow. Now Cistermiser has introduced a device to take this a step further.

www.ourworldiswater.co.uk



ONLY THE BEST WILL DO! BRITISH LED DOWNLIGHTS

Great demand for a UK designed and manufactured LED downlight reflecting brilliant British taste and engineering and available in London from Nu Line and Mr Light.

Discreet and stylish LED downlight range incorporating anti glare, high light output and excellent colour rendering so important for food, hospitality and homes with stylish artistic and colourful interiors.

BB Light hits the target with full adjustability, good beam angle availability and efficiency. No maintenance, no bulbs required ever!

Sometimes only the best will do.



mopitup

Soak-up leaks and spills

Mopitup is a handy tool to quickly and hygienically mop up spills that are difficult to access. It's loved by plumbers, cleaners and maintenance staff. Mopitup is a lightweight porous bag. On contact with water the inner granules transform into a gel that traps the water.

IDEAL FOR
blocked toilets, basins, pipes and drains

Each sheet absorbs 5 litres
Cost effective
Environmentally safe
Easy disposal



BUY ONLINE

www.prosysonlineshop.co.uk

HTI

Hotel Technology International Ltd

**ACCESSORISE
WITH
STAND OUT TECHNOLOGY**



VISIT WWW.HOTEL-TECH.COM



TELEPHONES • CLOCKS • RADIOS • SWITCHES • MEDIA PANELS

Hotel Technology International Limited
1st Floor | 239 Kensington High Street | London W8 6SA UK
Email: sales@hotel-tech.com • Tel: +44(0)203 405 1200



ACTION WALL TIES

THE STRUCTURAL REPAIR EXPERTS

From a single terraced house to vital infrastructure tunnels, from tower blocks to mansion houses; Action Wall Ties have the expertise you need.

Structural defects require repairs that get to the root cause of the problem. Action Wall Ties have over 20 years' experience of diagnosing and repairing all manner of structural faults.

Traditional builders often provide superficial, cosmetic repairs without solving the underlying issue. At other times property owners have been faced with long and costly rebuilding works in an attempt to fix structural problems.

Action Wall Ties have developed specialist tools and fixings that restore structural integrity without the need to rebuild. Precision drilling equipment allows state of the art fixings to be installed without altering the appearance of the property.

Find out how Action Wall Ties can help you. Email photos of the structural defect to enquiries@actionwallties.co.uk or



call them on 01227 721 255 for free, preliminary advice.

Action Wall Ties' care and attention to detail make them the perfect choice for listed buildings and period properties. With flexible teams that can manage anything from a single apartment to an entire estate of tower blocks, you know you will be in safe hands with Action Wall Ties.

Architects, home owners, housing associations and councils across London, Kent and the South East have come to

trust Action Wall Ties to provide budget conscious structural repair solutions.

- Large Panel System Reinforcement
- Repairs
- Concrete Frame Buildings Defect Remediation
- Helical Bed Joint Reinforcement
- Lateral Restraints
- Remedial Wall Ties
- Masonry Realignment
- Remedial Movement Joints
- Boot Lintel Remediation
- Lintel and Bay Window Realignment
- Concrete and Brickwork Repairs
- Design, Fabrication and Installation of Remedial Structural Steelwork

For more details and to see case studies that showcase the wide variety of structural defects that Action Wall Ties can help with visit www.actionwallties.co.uk.

Contact Action Wall Ties for friendly advice and a no cost quotation. Call 01227 721 255 or email: enquiries@actionwallties.co.uk

Tel: 01227 721 255
www.actionwallties.co.uk

CHORLEY HOSPITAL GIVES CHILDREN A YOUNIQUE® EXPERIENCE

The refurbishment of a 1930s building by multi-disciplinary practice, Frank Whittle Partnership Limited, into a state of the art children's educational centre is the first of its kind in the UK. The architects specified Younique® by Formica Group for the washrooms at this ground breaking NHS experience centre at Chorley & South Ribble Hospital.



The new LIFE (Learning Inspiration Future Employment) centre offers the people of Lancashire from the age of 5 upwards the unique opportunity to learn about various hospital operations while gaining a greater understanding of the NHS and its functionality.

The centre is set up with a range of departments including mock wards, A&E, X-ray and triage. A state of the art 3D experience theatre allows children to find out more about the human anatomy, diseases and healthcare, offering real insight into the day to day goings on of a hospital.

David Simmons, associate partner and interior designer, Frank Whittle Partnership Limited, comments: "Due to the project being for such a wide age range, we set out to ensure the design appealed to all age groups and was practical at the same time. On receiving the brief, our design was inspired by the very nature of the building's purpose. Working with the forward thinking Widening Participation Team, who welcomed exciting and innovative ideas, helped too."

www.formica.com

MILFORD-CONTRACTS-LTD

MILFORD CONTRACTS LTD

As a national operator Milford Contracts Ltd offers full interior services and finishes to many established and emerging commercial businesses.

We have access to over 60 highly experienced personnel dedicated to the successful provision of total fit-out solutions at the minimal disruption to your business.

Established in 1987 Milford Contracts Ltd is experienced in providing complete interior solutions for all types of high-tech facilities and Major Construction projects.

We work in partnership with our clients such as Kier Major Projects, MW Group, GSK and high street names such as Boots, Muller, M&Co and VW.

Milford Contracts Ltd can offer you a complete interior package for your facilities and buildings.

We match our services to your requirements; from consultation, planning to construction.

Our hardworking approach has earned us a reputation for producing high quality work, on time contract completion and finding innovative solutions for total client satisfaction.

We are CHAS & Constructionline Accredited

Tel: 01785 228802/07775 888664

sales@milfordcontracts.co.uk

CONNECTING CROSS-LAMINATED TIMBER



To support the growing use of cross-laminated timber (CLT) in the UK and Europe, leading connector manufacturer Simpson Strong-Tie has released an updated version of its 'Connectors for CLT' catalogue.

Featuring a host of new products including heavy duty angle brackets, hold-down connectors and structural screws, this edition represents a complete set of solutions for the assembly of CLT buildings, as well as steel and chemical mortar products designed specifically to connect the entire structure to concrete.

Sales Director, Jon Head explains: "We have drawn together a huge variety of products from across our European operations to produce a comprehensive range of performance tested connectors and fasteners to enable CLT constructions from floor to ceiling – the CLT designer need look nowhere else".

To further support the design and construction of CLT structures, Simpson Strong-Tie also has a team of engineers based at its manufacturing plant in Tamworth, offering technical support and assistance.

The new brochure can be downloaded from the Simpson Strong-Tie UK website (strongtie.co.uk).

MCS CORPORATE STRATEGIES LTD



MCS Corporate Strategies Ltd is a very specialist company working in Research and Development Tax Credits, Land Remediation Tax Relief and Patent Box claims.

Support for these activities is growing rapidly as Government policy actively encourages companies to take up claims.

Main Tax relief schemes are:

- Land Remediation Tax Relief
- Research and development Tax Credits (available for all companies)
- Patent Box (available for all companies)

The Single key criterion for qualification is that you be registered as a UK corporate entity. Claims are retrospective (two years) and intended to be claimed year-on-year.

SME's and large Companies qualify. Manufacturing, engineering and all disciplines, activities, parts, products, prototypes; IT software and first-of-class items are examples of what is included as items for research and development. The CIR definition of R&D is wide and inclusive of very broad activities. MCS has a well established claims experience.

The entire Process is undertaken in-house, is confidential, involves liaison with clients, their accountants and, importantly, HMRC. Clients are supported throughout and as they expand and enhance their activities.

www.mcs-corporate.com





A LONDON TERRACE TRANSFORMED WITH A MODERN BALCONY STYLE EXTENSION

IQ Glass UK

.....

The times when adding a conservatory to the back of properties has gradually developed with home owners discovering how an architect can take the traditional conservatory concept and transform this idea with the use of structural glass and modern glazing systems.

When we think about a conservatory we often remember how hot they can become during Summer, however new advances in

technical glazing has seen the introduction of 'solar control glass'. Solar control glass has a solar control coating applied to the internal face of the external glass panel of an insulated glass unit. This coating reduces the amount of short wave radiation that travels through the glass unit and therefore reduces the amount of heat inside. With this in mind, architects, Kaap Studio Architects for instance, are now using large elevations of glass for their

projects to create a contemporary design aesthetic.

Sliding doors are an excellent way of restyling the traditional conservatory, they have the ability to completely open the walls of the 'glass box' to give the owners a modern indoor-outdoor living space. Keller minimal windows sliding doors were used on this project because they have an incredibly thin vertical sight-line of only



21mm, which doesn't interrupt the views out into the garden when the doors are closed.

This glass box extension was created on the ground floor of the property with a basement level below, as the garden stepped down to provide access to the basement the extension was given a balcony-style aesthetic. Due to this level change, frameless glass balustrade were installed adjoining the internal side of the minimal windows sliding doors, which provided a safety barrier when the sliding doors were open - as they were frameless, the views into the garden were not compromised.

The result: A dark end terrace property in London was given additional space and light with the introduction of a large glass box extension that saw the installation of a structural glass roof, an aluminium casement door, Keller minimal windows sliding doors and frameless glass balustrades.

www.iqglassuk.com



www.iqglassuk.com
Images: Malcolm Menzies

ALICE POOLE ARCHITECTS

Alice Poole Architects is a small architectural practice, with typically 5/6 employees based in Bedford Park in Chiswick, West London.

Bedford Park is an area of particular architectural significance as it is known as the first garden suburb. The houses were built at the end of the 19th century with many designed by Norman Shaw in a style known as Queen Anne revival.

The bulk of Alice Poole Architects' projects are domestic and involve Listed Buildings or properties in Conservation Areas. Work on these buildings is challenging as clients' aspirations can conflict with planning limitations.

Alice Poole Architects believe that historic buildings can be altered to accommodate the lifestyle and aspirations of the owners, who now inhabit the buildings, if reasonable flexibility and imagination is shown by all parties.

Alice Poole likes design challenges and will always endeavour to find a solution.

Although Alice Poole Architects do carry out projects abroad and in other parts of the country, the majority of their projects are within walking distance of the office, which is beneficial as projects are able to be monitored closely. Also more projects can be carried out as no time is lost in travelling.

Alice Poole Architects' latest projects are to listed buildings in London and currently they are working on a full refurbishment of a Grade II Listed house, where a studio extension with basement under has been designed. The studio is a kitchen/dining room and complements the style of the original architect, Charles Voysey.

Work has now commenced on the construction of a contemporary orangery type extension to a Georgian mansion. A strip of glazing, on both the vertical and horizontal planes, acts as a separation from the existing house. The new extension features contemporary glazing in the roof and walls to act as a contrast to the original house which has the small paned sash windows, typical of the Georgian era.

In 2017, a new build one-bedroomed house, Old Yard House, captured the imagination of the architectural world and was shortlisted for several Awards. Shoehorned between other buildings into a wedge shape, and then twisted to face the garden, Old Yard House is a complex piece of geometrical design in answer to a challenging site with both modern and traditional elements of architectural design being used.

Outside London, Alice Poole Architects have just finished the conversion of a stable block in East Anglia and construction is now about to commence on a large country house in Bosham, West Sussex.



Alice Poole believes in the Bauhaus approach to projects, where architecture, interior design and landscaping are combined to give a fully integrated design solution. Therefore, Alice Poole Architects offer a complete service, carrying out not only the architecture but also interior design and landscaping.

Project management is carried out and, with 35 years of experience, Alice Poole works with a wide range of firms who are able to realise her designs.

Keeping all of the design in house is cost effective and time efficient for clients.

Alice Poole Architects do not impose a house style on clients but work with them to achieve designs that suit their aspirations and taste. As a result, each job is different and individual and the variety of design is apparent in the projects.

Currently, there is uncertainty due to Brexit and house prices seem to have fallen in London, which means that there are not so many properties on the market.

However, lower prices mean that clients are able to invest more on renovation.

Many architects look to secure work in emerging markets in Asia but currently all Alice Poole Architects' work is in the UK.

In 2017 and 2018 the quality of Alice Poole Architects' work has been recognised in the following Awards categories:

2017 Awards

Build Architecture Award 2017

Best Listed Building and Conservation Architecture Firm – South England

London Construction Awards 2017

Finalist for Old Yard House

AJ Architecture Awards 2017

Old Yard House – Shortlisted for Budget Project of the Year

2018 Awards

Build Architecture Awards 2018

Best Full Service Architecture Practice – South England

M and A Today Global Awards 2018

Best Listed Building and Conservation Architecture Firm – South England

Design Kitchen and Bathroom Awards 2018

British Design and Manufacturing Category – one of 3 Finalists (decision date 8/10/18)





ALICE POOLE ARCHITECTS ARCHITECTURE & INTERIOR DESIGN

6 Woodstock Road, Bedford Park, London W4 1UE
t 020 8742 8800 • f 020 8742 8646 • e info@alicepoole.co.uk



Alice Poole Architects offer a full architecture and interior design service, creating unique, imaginative and high quality environments for both domestic and commercial clients, with projects followed through from inception to completion. All types and sizes of commissions are welcomed which can encompass new-build as well as the extension, alteration and refurbishment of existing buildings, and Alice Poole Architects have special expertise in Listed Buildings and Conservation Areas.



Alice Poole does not have a 'house' style but treats every project as unique, with an emphasis on achieving the best spatial and design solutions to meet each client's individual requirements. Alice Poole believes in the principles of The Arts and Crafts Movement and The Bauhaus where Architecture and Interior Design are combined to achieve a unified scheme with great attention to detail, using the interplay of light, shapes, colours and textures to create exciting and stimulating environments.



Alice Poole Architects have won, in 2018, a Global Award for the Best Listed Building and Conservation Architecture Firm in the South of England and an Award for the Best Full Service Architectural Practice in the South of England. Alice Poole Architects are also a finalist in the 2018 British Design and Manufacturing Category of the Designer Kitchen and Bathroom Awards 2018. In 2017, Alice Poole Architects also won an Award for the Best Listed Building and Conservation Architecture Firm in the South of England, was shortlisted to the final 5 for a Prestigious AJ Architectural Awards 2017 and was a finalist for the London Construction Awards 2017. An Alice Poole Architects project was exhibited in the Don't Move Improve Exhibition in 2016.



BUILD





TOTAL HOUSE REFURBISHMENT AND REAR FAMILY KITCHEN

Taylor and Co Architects

Large side and rear extension to form 2 additional bedrooms and extra living accommodation to an existing 1970s detached house. Close liaison with the family ensured all individual needs and wishes were met, including a useful mini-gym and impressively spacious family living area. Extensive glazing to the ground floor enables full enjoyment of the garden views from the contemporary kitchen-dining room.

Building cost: Around £200,000
Build time: Completed in 6 months

Skills used
Measured surveys
Consultations leading to development of sketch scheme layout
Agreement of final Design.
Planning application
Space planning.
Building Regulations
Tender issue to reputable local builders.



www.taylorandcoarchitects.co.uk



MENDABATH UK
THE UK'S LEADING BATH RESURFACING COMPANY

Mendabath UK is the leading bath repair and resurfacing specialist.

We repair and resurface baths, basins and shower trays insitu, as well as cosmetically repair minor damage and cracks on all sanitary ware in the commercial and domestic sector.

Baths that are stained or damaged can be fully restored with no need to re-tile, re-decorate or re-plumb the bathroom with a turnaround time of just twenty four hours, keeping lost occupancy days to a minimum.

So just repair don't replace!

- Professional highly trained technicians
- Quick turnaround
- Non-intrusive process
- 48 colours to choose from
- No mess
- Comprehensive guarantees

We have been operating across the UK for over 35 years with our uniquely in-house formulated products. Mendabath UK is fully insured and H&S compliant.

For more information contact Mendabath UK on 0800 328 4324, www.mendabath.co.uk

HEADS UP ON SOLUTION TO ACCESS SHARE OF £420M REVENUE

Improving bathroom facilities is one of the top- and easiest- methods of opening business doors to a £420million spend.



A new report into disability by the Papworth Trust claims that revenue figure is what disabled people spend each week. The report also lists the top 10 barriers to access outside the home: the list includes bathroom facilities- layout, location and size.

Closomat is uniquely positioned to help address the problem.

Closomat is uniquely positioned to help address the problem.

“Can you afford to exclude up to 20% of the population? That is how many people are registered disabled,” explains Robin Tuffley, Closomat marketing manger. “However, Regulations, particularly with regard to accessible toilet provision- were not developed and written by people with limitations. In reality, the majority need more space- for the wheelchair, and/or a carer, additional equipment- such as a hoist or changing bench, particularly as mobility is now perhaps the biggest challenge facing disabled people.

Closomat is Britain's leading installer of assisted accessible away from home toilets, including hygiene rooms, Changing Places and Space to Change facilities. Closomat is also unique in, in-house, being able to offer a complete CDM compliant package, encompassing design advice, supply, install, commissioning and service/maintenance.

www.clos-o-mat.com



Timeless style ... enduring quality

finwood designs

www.finwooddesigns.co.uk

01926 484037



MODE AND MODE BESPOKE BY VOGUE (UK)

Photos: MODE and MODE Bespoke,
Designer Radiator Collection by Vogue
(UK)

The UK's largest British designer and manufacturer of premium radiators and towel warmers, Vogue (UK), proudly highlight diversity through its MODE Designer Radiator. available in standard and non-standard sizes with a host of supporting accessories.

Steve Birch, Sales Director at Vogue (UK) says "Modern homeowners are looking to embrace period style heating that is modernised by a contemporary colour palette, the addition of retro accessories and the ability to design with multiple styles and sizes. Our MODE and MODE Bespoke Radiator range fits the bill, allowing for creative freedom and your own sense of personal style in your home."

A customisable design concept, Vogue (UK)'s MODE and MODE Bespoke is a highly flexible heating solution with the option of a rich colour palette. Available in standard and non-standard sizes, this radiator design allows for under-window and full height installation, or even an amalgamation of contrasting models/colours/sizes for interior impact and all important 'wow-factor'.

Columns: To suit your space and heat output requirements we have a standard range of over 40 radiators. Additionally, non-standard options for MODE Bespoke are available for the 2, 3, 4, 5 and 6 Column designs, as pictured. With heights from 300mm up to 2000mm, excluding feet: (standard height up to 1800mm) and 2 to 6 column widths the choice is exceptional.

Offering a practical wall or floor mounted heating solution, the MODE Radiator Collection by Vogue (UK), is designed to work around you and your home, with a high capacity for heating your entire home.

Heights x Widths:
- 300, 400, 500, 600, 750, 900, 1000, 1200,
1500, 1800, 2000 [mm]

2 Column - Depth 68mm - Watts / BTU's: up to 1548/5282 (standard)
3 Column - Depth 100mm - Watts / BTU's: up to 2117/7224 (standard)
4 Column - Depth 140mm - Watts / BTU's: up to 2632/8981 (standard)
5 Column - Depth 177mm - Watts / BTU's: as high as you need
6 Column - Depth 215mm - Watts / BTU's: as high as you need.

Accessories:
Column Radiator Feet
Adjustable Feet
Base Plate Cover - For use with Adjustable Feet
Top Retaining Stay - For use with Adjustable Feet
Heavy Duty Wall Brackets - Available for 2 to 6 Column Radiators
Standing Brackets - For installation to nonconforming wall materials, e.g. glass
Welded Feet - increase height by 100mm
Up to 20 sections = two feet required
21 to 40 sections = three feet required
41 to 58 sections = four feet required

The MODE and MODE Bespoke Radiators are supplied in White RAL 9016, as standard, or you can choose from a broad spectrum of coloured finishes by Vogue (UK) like a bold Melon Yellow (RAL 1028) or more subtle shade like Pastel Green (RAL 6019). It is also available in a choice of contemporary painted finishes for 2 & 3 Column versions: Latte, Cappuccino, Mocha, Espresso, Black and Anthracite.

Manufactured from Mild Steel, the MODE Radiators are part of the Designer Collection and supplied with a 15 year manufacturer's guarantee.



For further information on Vogue (UK) or any of its latest product collections, please call 01902 387000, email info@vogueuk.co.uk or visit www.vogueuk.co.uk



Celeste



Sparkle



Belgravia

Rio Blue

MRPO (Brushed brass)

**Tap into the latest
on offer from**

Walton Bathrooms

Established since 1985

Shop online at:
www.waltonbathrooms.co.uk

Open Mon - Sat 9am - 5pm.

Visit our showrooms at The Herisham Centre,
Molesey Road, Herisham, Surrey KT12 4HL.
(Easy parking next to Waitrose)

INTERNET & CONTRACT SALES TEL: 0208 481 7970
SHOWROOM TEL: 01932 224 784

All products shown by Crosswater



MRPO (Matt black)



Belgravia



Water Square



THE HONG KONG HOUSE

AR Design Studio

.....

The Hong Kong House is a private extension and renovation project, completed in late 2017 by Winchester based architects AR Design Studio. A world away from the client's former home in Hong Kong, the house provides an opportunity for the family to have a familiar inside-out space to live in and relax.

Set beside an ancient Roman Road, the existing Grade II listed Victorian property is a beautiful townhouse of proud red brick. The clients bought the house for its scale and charm and approached AR Design Studio to help bring it up to modern standards and provide a much needed connection to their stunning walled garden.

AR Design Studio's approach to the existing listed house focused on sensitive restoration. The removal of the existing kitchen allowed for the creation of a quiet drawing room while setting up an enfilade of spaces along the rear of the home. The family room is the bridge between the rooms of the home and the new garden room.



Where once there were large windows, now there are cut-out doorways, allowing light from the glass link to flood deep into the house. Three steps are the threshold separating the old and the new, guiding you from a vertically formatted space into the horizontal space of the new garden room. A deep section of roof obscures the view of the pool and garden, which, upon arrival is revealed.

The garden room is AR Design Studio's refined addition to the existing house, acting as a bridge between the garden and the home. A 1.5m wide glass link prevents the old and the new clashing into each other, with the 'light-touch' approach reducing the physical impact on the listed building, while exposing the character of its brickwork.

Large double-glazed sliding doors effortlessly open to blur the distinction between inside and out. One minute a cosy living-dining area, the hub of the house, the next, a contemporary take on a garden pagoda, providing a place to escape after sunbathing by the pool. Perfectly designed for warm days hosting family and friends, surrounded by rustling weeping willows, climbing roses, and fruit trees, the garden is a quiet retreat from the hustle and bustle of daily life.





The garden room is clad in dark-grey fibre-cement board, chosen for its clean character and large format, to match the tone and colour of the existing slate roof. This theme is continued in the use of 3m x 2m ceramic grey tiles for the pool, landscaping and the interior floor with a flush threshold throughout to unite inside and out. The deep profile of the roof gives it a strength of presence helping to act as a visual staging post before the eye is drawn up to the existing home. Where once the house loomed over its quiet garden, now it embraces and draws it in.

The remaining spaces of home were redecorated, period features rejuvenated and the original wood floor exposed and treated. The entrance and side hall feature bespoke glass and timber staircases, designed to flood their connection spaces with light. This sympathetic restoration has helped invigorate the once dark home with lightness and space.

AR Design Studio is an RIBA chartered architects practice, based in Winchester, Hampshire, specialising in elegant and imaginative contemporary new homes, extensions, renovations, interiors and multi-plot developments. AR Design Studio's architectural expertise and flair has been recognised by winning a number of prestigious industry awards including the Royal Institute of British Architects (RIBA) 2018 and 2012 Awards, Daily Telegraph Small House of the Year Award 2014, the RIBA South Award 2017, American Architecture Award 2017 and the UK Property Awards 2017. With a comprehensive knowledge of planning, AR Design Studio has built a stunning portfolio of completed residential projects.



www.ardesignstudio.co.uk

Images: Martin Gardner (www.martingardner.com)

One company • Two catalogues • Total lighting solutions

Your toolkit of technical and architectural lighting with over 300 products in the range.



An extensive selection of over 2,000 decorative items available for immediate delivery.

For all of your lighting requirements, be it residential or decorative items please contact:
marketing@searchlightelectric.com
to request your free catalogues.



T: +44 (0) 161 203 3333 | www.searchlightelectric.com

SCHÖCK MAKES THERMALLY EFFICIENT BALCONY RETROFIT A REALITY



The replacement of thermally inefficient balconies, or the retrofitting of balconies on both old housing stock and office-to-residential conversion is in demand. The challenge though is to meet the same thermal insulation standards as new build. One of the most effective solutions is the Schöck Isokorb. A load-bearing structural thermal break that allows cantilevered steel balconies to be connected to the reinforced concrete slab. With its 120mm insulation thickness, the Isokorb minimises thermal bridges at concrete-to-steel cantilever connections. It is a ready-to-install component and residents can remain in the building during external renovation, with no damage risk to internal finishes.

Installation utilises a template

Positional drill holes are marked with a template on the building face. Holes are then drilled into the concrete slab, adhesive injected and the load-bearing reinforcing rods slipped into position and anchored by means of the pre-injected adhesive. Structural screed is poured into a pocket between the Isokorb and the concrete slab, ensuring a perfect contact between the two structural elements. Once the screed has cured, the structure is ready for the new balcony to be connected. The Schöck design team is on hand to provide full technical support, as product selection for renovation is subject to certain restrictions and depends on specific project requirements and the building structure.

Dependable and verifiable performance

The Isokorb range meets full compliance with the relevant UK building regulations and offers BBA Certification and LABC Registration. When incorporated into residential buildings, the required f_{Rsi} value (the temperature factor used to indicate condensation risk that must be equal to or greater than 0.75) is comfortably met. There is also full compliance with the Government Standard Assessment Procedure, SAP 2012, concerning CO₂ emissions from buildings and respectively heat losses through non-repeating thermal bridges. In addition, the product is certified as an "Energy saving component" by the Passivhaus Institute in Darmstadt, Germany

Currently one of the largest office-to-residential schemes

Atrium Point, at Sudbury, in North West London, was previously the London headquarters of the international contractor M.W Kellogg. The existing office buildings are being sustainably refurbished, with solar panels, air source pumps and heat recovery units. The development will realise a mix of 290 studio, one and two bedroom apartments – and many of the units benefit from a retrofitted cantilevered steel balcony.

For a free copy of the Schöck Thermal Bridging Guide and / or the Thermal Bridging Solutions brochure – contact the company on 01865 290 890 or visit www.schoeck.co.uk





THE SHOW THAT'S GOT DECORATING COVERED

On November 27 and 28, the decorating trade will convene at Coventry's Ricoh Arena for the 2018 National Painting and Decorating Show.

For professional decorators, contractors, merchants and stockists, this is the annual trade event that has the entire decorating sector covered. Paint and wallpaper, preparation tools and applicators, colour trends and time-saving techniques – show visitors will see the latest in product innovation as well as plenty of trusted best sellers.

From Dulux, PlastiKote, tesa and Wagner to Brewers, Crown, 3M, Graco and Benjamin Moore, the 2018 show will again feature hundreds of products, brands and suppliers revealing the latest trends and textures making news across the decorating market.

The National Painting and Decorating Show provides visitors with a valuable networking opportunity to meet exhibitors face-to-face, find out who's doing what in the decorating industry, and exchange ideas and solutions with like-minded decorating professionals.

For FREE tickets, visit www.paintshow.co.uk



LIMEWASH ALTERNATIVES FOR MEDIEVAL HALL HOUSE

A Grade 2 listed north Devon home has been given a contemporary look thanks to its redecoration with Earthborn paints. The late medieval hall house features particularly ornate plasterwork.

Owner Simon Clarke said: "The house is built of cob, a clay soil based building material, and the walls are lime plastered. In order to prevent damage caused by moisture build up in the walls I needed breathable paints, but I didn't want to use limewash again. I wanted a wider colour

palette and paints that would last much longer."

Simon selected Earthborn paints which can be applied straight over limewash: the Ecopro Silicate Masonry System for outside and Claypaint inside.

The Ecopro Silicate Masonry System bonds with underlying materials to create a durable, water and weather resistant barrier. It offers the same high levels of breathability as limewash but is easier to

use and lasts much longer. Ideal for stone, brick, concrete, render or cob, it has 24 colours that will not yellow with time.

Claypaint is a unique, clay based emulsion that covers exceptionally well and gives a distinctive, ultra matt finish. It contains no oils or acrylics, so is virtually VOC free and highly breathable. It's Ecolabel approved and available in 72 standard shades.

www.earthbornpaints.co.uk



External walls are painted with the Sandstone shade of Ecopro Silicate Masonry Paint, providing a long lasting alternative to limewash.



The warm off-white of Hopscotch Claypaint creates a calm ambience in the kitchen's dining area.

TOUCH

IRONMONGERY LTD

www.atouchofbrass.co.uk

210 Fulham Road, Chelsea London SW10 9PJ

THE PERFECT TOUCH

Established in October 1982, Touch Ironmongery is one of London's leading ironmongers. Originally called "A Touch of Brass", the firm changed their name in 2003 in reaction to slowly advancing market changes in architectural ironmongery which is no longer supplied solely in brass, and to also reflect the broader range of products and finishes that they sell.

In fact today, Touch can supply a wide range of finishes including Brass, Satin Brass, Polished Chrome, Satin Chrome, Polished Nickel, Satin Nickel, Copper, Bronze -solid and plated, BMA, Antique Brass, Black, Pewter, Ceramic, Leather, Stainless Steel, Satin Stainless Steel, Gun Metal, and the list keeps growing. Whatever finish you require, Touch can help you get the right look.

Touch occupy their recently refurbished showroom at 210 Fulham Road, Chelsea, where they display a vast range of their 5,000 products. With a customer base including Interior Designers, Builders and individuals who are interested in the top end of the

Ironmongery market, Touch mainly supply to residential premises but hotel and office properties also contribute to their vast clientele.

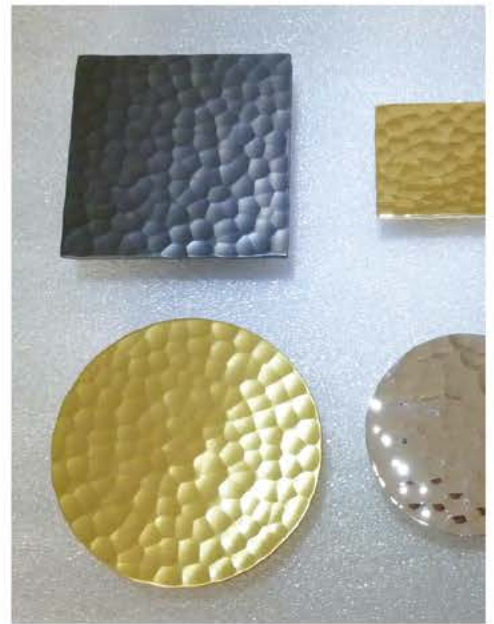
The company also have a healthy export market to all corners of the world, namely the Middle East, Europe and the Americas. Touch's owner and founder, Bill Benham, has 33 years' experience in the ironmongery trade, as do his colleagues Jim Haselup and Alan Blanchard. Saleem Qureshi is the newest member of our team and has 10 years' experience, meaning their knowledge is unrivalled in this industry.

The range of products supplied by Touch date from circa 1640 French (Louise XIV) and cover all subsequent periods (Georgian, Edwardian & Victorian), art deco and contemporary pieces also make up the product ranges. In addition, Touch showcases the very best of British manufacturing; the best ranges are still produced in the Midlands by craftsmen in factories dating back 200 years or more. Touch also sell European manufactured goods

which is considered to be of a very good quality and in recent years they have introduced some of the far eastern made products, albeit in a limited range but cost effective. With trends continuously evolving, new innovative products are constantly under development. Touch understand that keeping up with the fashion-shifts is imperative in order to provide every customer with the best solution for their requirements.

Ironmongery can be a difficult and complicated aspect of a building project, as a result Touch aim to take this awkward aspect and make it user friendly and clear to understand by offering an on-site service where they carry out a detailed door by door, window by window, room by room Ironmongery schedule, highlighting all requirements and identifying any items that can be refurbished. Refurbishment is a large part of the business; Touch will undertake complete ironmongery refurbishment projects, and can restore old paint covered door furniture to their former glory, looking as new, at a fraction of the cost to replace.

For more information about Touch Ironmongery or to arrange a showroom visit please call 0207 351 2255 or alternatively visit www.atouchofbrass.co.uk



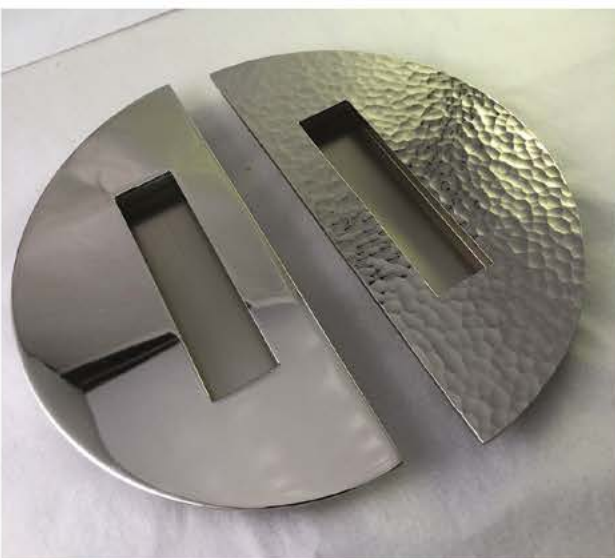
BRITISH & EUROPEAN MANUFACTURERS SUPPLYING THE FINEST QUALITY IRONMONGERY

Touch combine traditional skills with modern manufacturing techniques to produce the most beautiful, quality fittings, built to stand the test of time.

As well as specialist bespoke items, Touch supply over 1000 products, available in 23 different finishes to furnish high end residential and commercial properties, royal palaces, government houses, historic castles and stately homes.

Olaria, available from Touch Ironmongery

www.atouchofbrass.co.uk & www.olariabarcelona.com





MODERN LIVING

Today's home building trends focus on opening up rooms to maximise the natural daylight feel into the living space, however, we all have those times when privacy is still a must especially for those of us with growing families.

What if you could combine both of these elements?

Porta-finesse has the perfect solution. Welcome to our fabulous collection of internal wooden doors. The sleek style offers a minimalistic no-fuss design and safety glass as standard which lets so much light into each room.

Fully customised to the homeowner's requirements. These doors are 40mm thick and available in either fixed or sliders - great if you are looking for a pocket door that tucks away when you want to open up a room.



The internal doors have the look of steel but the warmth of wood and a fraction of the cost seen in the Aluminium market.

With a guarantee of 10 years these doors are the future of modern living.

Take a look at our stunning range at www.porta-finesse.com or email us for more details enquiry@porta-finesse.com

www..Porta-Finesse.com
Email: enquiry@porta-dors.co.uk
Tel: 01335370793



THE SUMMER'S COOLEST GREY

Grey might not sound like the most appealing summer view, but – when it comes to the home improvement market – VEKA Group has unveiled a product to thoroughly brighten up your outlook.

Hailed as 'this summer's coolest grey', the Imagine Bi-Fold with VEKA's new Grey Base (no more tiny glimpses of white anywhere) is designed to be foiled with the ever-popular Anthracite Grey from the Variations colour collection. Supplied with matching Anthracite Grey hardware from ERA, it is bang on trend and offers fabricators and installers yet another selling point to seal more sales this summer.

Sales Director Neil Evans explains: "The Imagine suite of doors is incredibly popular with our fabricators and installers, and now the Grey Base option – foiled both sides in Anthracite Grey – offers the look of aluminium, with the benefits of PVC-U.

It will be priced exactly the same as standard profile, and is just a great 'extra' that might prove to be the tipping point for homeowners choosing which product they want to spend their hard-earned cash on. "VEKA's Imagine Bi-Fold Door is already top of its game; offering style and substance,



without compromise. It's been designed to provide the ultimate in security, style and energy efficiency, and comes with a host of guarantees. This development is another example of VEKA's ability to anticipate – and react to – trends in the current market. As Grey products began to grow in popularity, VEKA was already developing ways to help customers capitalise on this opportunity."

VEKA plc
01282 716611
www.vekauk.com



ARE YOU A RESPONSIBLE PERSON AS DEFINED BY THE REGULATORY REFORM (FIRE SAFETY) ORDER?

- The Fire Door Inspection Scheme can assist you in meeting your responsibilities
 - Europe's First Fire Door Inspection Scheme
 - An initiative instigated by Guild of Architectural Ironmongers and the British Woodwork Federation
- FDIS Certificated Inspectors carry out on-site inspections of installed fire doors in all building types
- This is an essential part of any fire risk assessment and helps meet the requirements of the RRO (Fire Safety Order)



Contact your local FDIS Certificated Inspector

www.fdis.co.uk/inspector

0844 801 1518



ENJOYING THE VIEW, WHATEVER THE WEATHER

Centor

Originally from London and Lancashire respectively, Ann and Peter have made North Yorkshire their home for the past 25 years. Since 2002, they've been living in a traditional stone-built property on the edge of the Yorkshire Dales National Park.

Now both retired, the couple decided to embark on an ambitious extension project that would enable them to enjoy more of the views that their property afforded them.

"The thing about the house," says Peter, "is that there are spectacular views. But the

only room that enjoyed them previously was the kitchen. It wasn't much use if you wanted to sit and admire this wonderful view. That's why we had the idea of extending that side of the house, to really open up the views to the valley."

The couple wanted to create an extension that "looked like it was meant to be there" but that also maximised the views available to them.

"We're in a designated 'Area of Outstanding Natural Beauty' here, so it's quite difficult to get planning permission," explains

Peter. "We spoke to an architect who we had previously used to develop a heritage centre at our local church. And he was very good at creating a design that the planners were happy to agree to at the first time of asking."

Outside the kitchen, Ann and Peter previously had a small patio area – but it was rarely used. Ann explains: "Because of the prevailing winds here, we never actually ventured out there for very long before. We wanted to create an indoor room with those same views, so we could enjoy them whatever the weather."



The whole project took five months to complete – and the couple's Centor Integrated Doors now open out onto a new terrace area and an undeniably picturesque view.

For Ann and Peter, specifying fully glazed doors was a very important part of the design brief. "We wanted to maximise the view and bifolds seemed the obvious answer," says Peter. "They also worked well with our architect's idea of creating a glazed link in the area beside the new extension."

The couple first spotted Centor Integrated Doors at the Homebuilding & Renovating Show in Harrogate. Ann explains: "We saw lots of 'flimsy' doors and plenty of 'perfectly adequate' folding doors too, to be fair. But then we saw the Centor Doors – and they were clearly infinitely better than the others." Peter continues: "They were more expensive too, of course, but well worth the extra cost! When you see them, it's really clear that these doors are a top-quality product."

He adds: "We loved the fact that with the Centor Doors, we could get a really good weather-proof aluminium outer frame and oak on the inside, which ties in really well with all the wood we have within the house already. But we were also very impressed with the integrated arrangement of the blind and the fly screen.

Ann agrees: "We chose a light-filtering shade and that, in particular, has been really useful. Not just at night, but also if it's a really bright day and we want to reduce the glare of the sun."

"We do also get some flies and bluebottles around here if the farmer is grazing cattle in the fields nearby," says Peter. "So the fly screen will also prove very useful."

The couple are really pleased with the look and feel of their new doors, which take centre stage in the new extension.





"We now use the dining room every day, whether we're entertaining or it's just the two of us," says Peter. "We seamlessly move from one way of using the space to another, depending on the weather."

Ann adds: "It makes a nice big entertaining space too – we can have drinks on the terrace and then walk in and sit down for dinner. We do quite a lot of entertaining and everyone's always extremely impressed with the doors and with what we've achieved here." "And that's before we've even fully opened the doors!" quips Peter.

He adds: "I just wish we'd done this sooner. This extension with the bi-fold doors has completely transformed the house. And the surveyor who has since re-valued the property has told us that it's actually added two-and-a-half times the value of what we spent on the whole project to the value of the house – so that's a fantastic bonus!"





GETTING A HANDLE ON GREAT DESIGN

Nottingham-based ASH Door Furniture and Entrance Specialists have created exciting new ranges of door handle finishes, each customisable with a range of diameters, fixing centres and projection heights available.

As well as a broad range of materials there's an exciting range of finishes, such as Bronze powder coated, which provides the longevity of a polyester powder coat finish but with the attractive

metallic finish achieved through traditional anodised metal.

Anodised finishes provide many benefits. There are no heavy materials used in the anodising process and they can be cleaned periodically with water and mild detergent to restore the product's original lustre.

Using an artificially aged process ASH can achieve a vintage finish, successfully used with original fittings and fixtures in historic and period buildings to match a similar finish.

For more information visit www.ashhardware.co.uk



ROSSOMANIGLIE
ELEGANZA CON STILE

FINE ITALIAN DESIGN

Rosso Maniglie is our exclusive range of Italian inspired designer levers. Produced using a zinc base material and manufactured to the highest standards, this range takes designer levers to the next level.

Created with a sleek and incomparable aesthetic appeal, our contemporary style Rosso Maniglie range has quickly become the first choice for home owners, architects and house builders throughout the UK.

NOW AVAILABLE IN POWDER COATED BLACK FINISH

T : +44 (0) 1228 672 900
E : sales@zoo-hardware.co.uk
W : www.zoohardware.co.uk

Rosso Maniglie is part of Zoo Hardware Ltd.

SCHUECO JANSEN RENOVATION WINDOW IS THE PREFERRED SOLUTION

Janisol Arte 2.0, the second-generation renovation window from steel systems specialist Schueco Jansen, is proving popular with architects because of its enhanced specification, improved performance characteristics and ability to satisfy the aesthetic concerns of local authority planners and conservation officers.



Now being seen as the preferred solution for many refurbishment projects, especially those involving a listed building, elegantly 'retro' Janisol Arte 2.0 offers an enlarged range of profiles with slim sight-lines from 25 mm. A wider choice of glazing bead shapes – right-angled, bevelled, scotia and flat – makes it even easier to find an exact match for the steel windows being replaced.

Furthermore, since laser-welded profiles can now be added to standard Arte profiles, mullion spans can be significantly increased, so enabling the Janisol Arte 2.0 window to accommodate much larger areas of fenestration.

Available in all the opening types commonly encountered in both pre- and post-war industrial buildings, maximum vent weights have increased to 150 kg thanks to the introduction of state-of-the-art, 3D adjustable stainless steel hinges.

For more information on Schueco Jansen's Janisol Arte 2.0 renovation window, please email mkinfobox@schueco.com



GARADOR'S RETRACTABLE UP & OVER DOORS EASY TO AUTOMATE

Delivering safety, security and years of trouble free service, Garador's steel Up & Over garage doors have long been a top favourite across the UK. Unlike canopy Up & Over garage doors, retractable doors are designed so they are really easy to automate with an electric operator.

Retractable gearing means the door panel opens on horizontal tracks running back into the garage. They can be easily automated by fitting a GaraMatic electric operator to the door so the homeowner can open their door by pressing a button on a hand transmitter.

GaraMatic operators are expertly engineered to ensure fast and smooth opening and the hand transmitters incorporate bi-directional radio signals which are heavily encrypted for high security.

A video explaining the advantages of Garador's retractable Up and Over doors is available on Garador's YouTube channel at www.youtube.com/garador or find out more by calling 01935 443700 or visit www.garador.co.uk

Arden

TAILORED IN TIMBER

When choosing Arden Windows' timber solutions you aren't just choosing a product, you are choosing a solution that will enhance the integrity and performance of your home for a lifetime. With our windows and doors having an estimated lifespan of over 60 years* and warranties up to 35 years, peace-of-mind comes as standard with all our products. What's more is that all of our products are also available in any RAL colour you would like integrating them perfectly into your home.

Our team of experts can help guide you every step of the way; from planning drawings all the way through to delivery and installation, if required. We have invested over £3 million into new, advanced machinery for our factory and coupling that with having over 40 years of experience in the industry, our window and door not only meet the industry standards but go above and beyond.

Our projects range from small unique houses through to large scale private developments and major local authority refurbishment programs. Our aim is to ensure that you are totally satisfied with the final solution.

All of our products are engineered from FSC sustainably sourced engineered timber for stability and durability. Offering the widest product range in the UK we are confident we can provide you with the perfect view.

- An extensive range of timber windows and doors made to any size and configuration
- Matching range of Stratford doors now including bi-folding and sliding patio doors
- Exceptional thermal characteristics
- Triple glazing available with Ultra Low U-Values
- Full Factory Finish using Water based coatings
- ISO accredited state-of-the-art manufacturing facility
- Complete installation service.



Made To Measure Doors and windows



Why Wood? As a long term investment, they can add beauty and value to your home, improve well-being and reduce fuel bills. With the widest range of products in the market place we are sure to have a solution to suit your property and being the greenest choice of building materials with easy maintenance why woodn't you !

02476 632423
WWW.ARDENWINDOWS.NET

Email : info@ardenwindows.net



Arden

TAILORED IN TIMBER

Six Schools, Six Weeks – A Refurbishment Success Story



At the beginning Arden carried out preliminary site visits, the aim of which was to meet with all stakeholders of the project identify any areas of concern and develop a budget. After these meetings a project timeline was drawn up, the production team briefed and a manufacturing programme quickly developed.

At the same time as this Arden Windows surveying teams were on-site to measure each window and to record their location on elevation plans. The estimating and order processing team took the site drawings/surveys and processed them onto our computerised manufacturing system. This was then forwarded to the installation manager for the install programme and plan to be created and quickly forwarded to the relevant parties.

Needless to say manufacturing was quickly underway and within 6 weeks the project completed. As part of the process we also developed three new window and door systems that were required for the project!

Arden Windows took on the challenge to develop a solution to completely retrofit six schools in central London with high security, thermally efficient, sliding sash windows. All of which were undertaken during a demanding six week holiday period – no simple feat by anyone's standards however Arden jumped at the challenge to flex our innovative and operational muscles.

It all started at an Ecobuild exhibition, Arden Windows Ltd became involved with Watts PLC and Camden Borough Council. They were undertaking an ambitious multi school refurbishment programme during the school summer holiday break in July/August 2012 – made even more difficult due to the 2012 London Olympic Games which were to take place at the same time.

The six schools were all listed or of architectural merit and ranged from 1900's to 1970's constructions. The aim of the project was to improve the levels of insulation, reduce the carbon footprint of the schools, reduce noise levels from other outside sources, reduce maintenance costs going forward and finally to improve the comfort levels for all staff and students going forward.

Arden Windows became involved at the early stages of the project and through recommendations, based on years of experience manufacturing luxury windows, we helped guide the final design to what it is today.



Netley School



Due to the success of the project Arden now offer full CAD drawings, survey information, technical specifications and ultimately pilot windows for planning. Arden's success stems from our willingness to become involved with architects, cost consultants and planners at an early stage, this ensures we are able to achieve the highly time pressured installation required during non term time periods.

02476 632423

WWW.ARDENWINDOWS.NET

Email : info@ardenwindows.net





ATLANTIC UK

Architectural Hardware

Evolving out of a joinery manufacturing company established in 1989, we are anything but a typical architectural hardware distributor. We differentiate. Atlantic UK, from our inception in 2008, had a mission... a mission formed and held by our founder and owner, Adrian Ledgeway, to revolutionise the architectural hardware industry.

We constantly strive to be the most forward thinking, innovative, customer centric supplier in architectural hardware. How do we do this? We ask questions, we listen to feedback, we analyse, we act and we will always try and satisfy your requirements. Atlantic UK bring to market the products you want at realistic prices. Atlantic is still a small business by many standards, and we like it that way. We know our customers individually and they know us as a team they can trust.

Our enthusiastic and dedicated team are passionate in providing the simple, honest, on-time quality service that sets Atlantic UK apart. Atlantic UK prides itself not only on its innovative and beautiful products but also on providing the highest level of service.

With our comprehensive network of dedicated merchants and retailers throughout the UK, you are never far away from our beautiful collections of finest architectural hardware. Our quality products are manufactured to the highest of standards and will add that distinctive finishing touch to your project. Many of our designer door furniture products are designed and manufactured to our own specification, encompassed in seven

There are 15 stunning finishes included in the Old English Knob Range...
visit our website to find out more!...



stunning ranges, from the traditional Old English to contemporary Forme Italian range. Ultimately luxurious, and initiating urban designs trends since 1952, the stunning Forme Designer Lever Collection is entirely Made in Italy, and produced to a quality that only a company with over 65 years manufacturing experience can guarantee. The strong and bold Urban finishes enhance the beautiful styles, making a design statement that will inspire and entice. With more than 100 different designs and 30 beautiful finishes you will find something to compliment virtually every style of interior.

A handle is like a button on a coat, it can make or break a great room or piece of furniture, and it has to function as well as it looks. That's why we pay attention to the detail.

Atlantic UK's managing partner, Adrian Ledgeway, says: "Our designs are unique, creating significant demand from people seeking distinctive, high-quality items. Our customers are mainly in the UK and Europe but our products are being fitted globally including Dubai, America, Australia and Africa."

www.atlantichandles.co.uk



satin copper



showcasing our
four stunning
bronze finishes

urban dark bronze · urban bronze · yester bronze · weathered antique bronze



and more of yester bronze...



urban matt black



satin nickel

a sophisticated look
that works well with both
traditional and contemporary styles,
adding an elegant touch to any room.

this soft finish compliments
any designer lever



1.61 LONDON CREATE THE ULTIMATE BACHELOR PAD AT CONVERTED WAREHOUSE IN SHOREDITCH



BACKGROUND

Mike Wilcox was temporarily living in rented accommodation in whilst he saved to purchase a 'big project' close to his job in Mayfair where he works as a Financial Advisor. Being in his mid-thirties, Wilcox still wanted to be in a trendy part of town, but was specifically looking for warehouse space that he could transform into the ultimate bachelor pad.

PROJECT OVERVIEW

Wilcox found a triplex warehouse (Tilney) in Shoreditch and contracted 1.61 London – a luxury interior design company and residential property developer based in Mayfair – to develop and design the 1,800 sq ft building into a modern dwelling with state of the art furnishings, fittings and accessories, within an open plan setting that was appealing, flowing and homely. His three main requirements were to have; the ultimate bachelor pad, the best shower that 1.61 London had ever made and an impressive sound system. Other key changes included moving the kitchen

upstairs, redesigning the kitchen, adding a second bedroom and bathroom, and removing a staircase. The refit was in the range of a few hundred thousand pounds.

SUMMARY OF THE DEVELOPMENT AND INTERIOR DESIGN OF TILNEY

Whilst Wilcox was waiting to exchange and complete, he had created a full building plan with 1.61 London.

Starting with a full property value appraisal of the property Mike was buying, 1.61 London looked at the area Mike was buying and did a PSF evaluation using dedicated key market data to understand the key drivers in creating value from the design. From there they then created a revised floorplan layout and worked with both building control and the freeholders to ensure this was compliant with the necessary requirements. 1.61 London then put together a full design scheme working alongside Mike to ensure he was happy with the design package they were creating. This process ended with mood boards,





CGI's and a detailed list of suggested works. As an added touch, 1.61 London spoke with the neighbours to make sure everyone was aware of the works taking place to try and make the process as smooth as possible. Losing one staircase was a potential fire issue too, so they made sure building control were happy with the relevant means of escape. All contractors were either their own or sourced/managed by 1.61 London so that Mike didn't have to get involved at all.

BUILDING WORKS

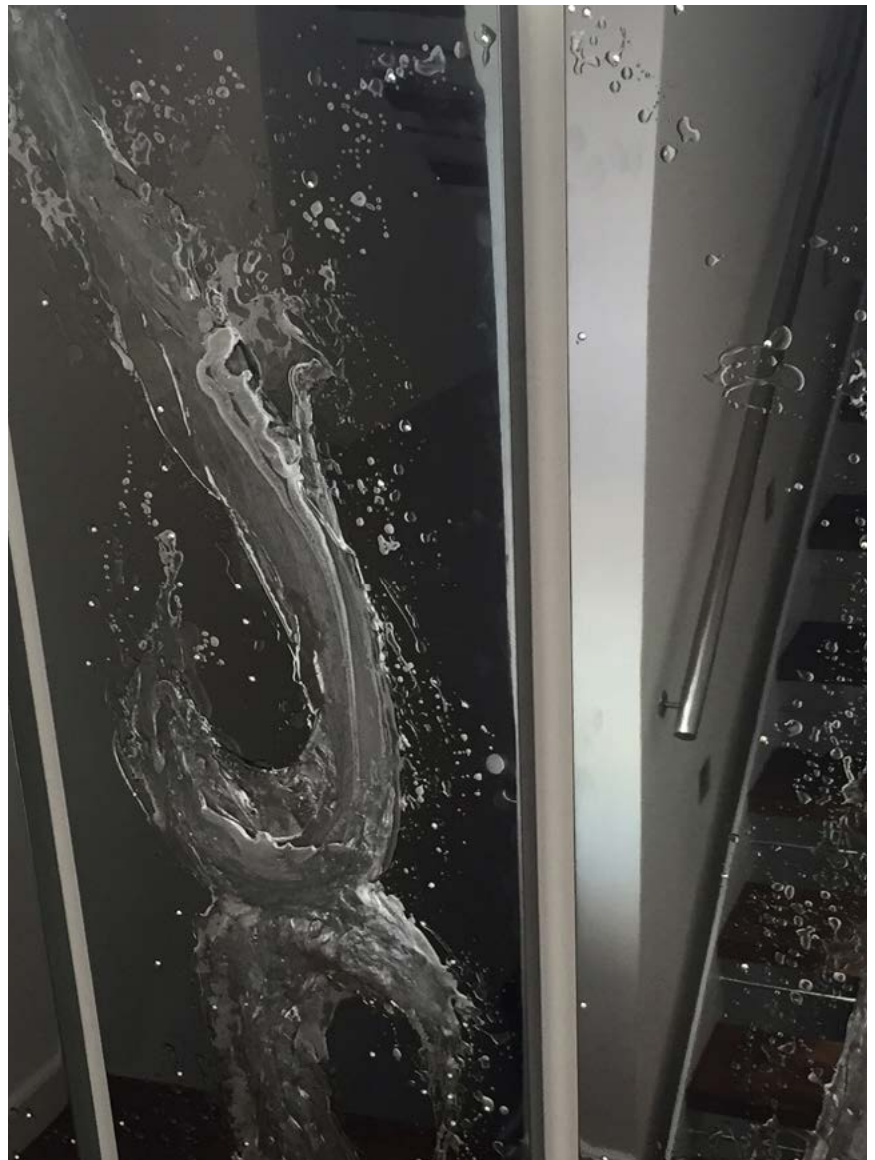
1.61 London arranged a full rewire and replumb of the property. They also had to completely rebuild the ground floor.

A key part of the interior architecture was to make sure the living space was open plan and located off the stunning outdoor space – a rarity for London living. 1.61 London therefore extended the top floor and placed the bedrooms on the floor below. By creating glass windows from the living space this added as much light as possible whilst also adding a spectacular feature from the living room.

The kitchen was moved upstairs and completely redesigned.

Downstairs, the master bedroom suite had to be something unique and so 1.61 London double vaulted the entrance. They also added a private study area off of the bedroom for Mike to work from. A bespoke walk in wardrobe area was also created between the bedroom and en-suite bathroom.

Meanwhile, the master en-suite bathroom was somewhere Mike asked 1.61 London to really make things stand out. He wanted to open the space so the entire back wall was mirrored. The bath has been sat centred to one wall with his and her sinks flanking the





bath on either side. The shower was made to be biggest feature with rain bars, water jets and multiple rain showers. A music system was also integrated into this area.

MODERN TECHNOLOGY

The entire house was wired with cat 6 cabling to ensure future proofing. Mike isn't keen on wireless connectivity because of its failings so everything had to have a cable. His mixing deck connected into the house and sound system, he had a catalogue hard drive which stored all his music and videos that he could access from his phone remotely or anywhere in the house where TV's were for example.

THE RESULT

After nine months, Tilney had been transformed into a stunning unique contemporary home with a look that is elegant and sophisticated, yet still warm and homely. His home went onto win an International Design Award. Overall, the lower floor comprises three bedrooms with two bathrooms, with a kitchen / dining area with outdoor roof terrace upstairs. Wilcox has now lived at Tilney for a few years, and has since met a partner, who now lives with him at the property.

VALUE ADDED

Mike bought the property for £950,000.

He spent £225,000 in total on the redesign and refit by 1.61 London.

The current property is now estimated to be worth £1.9m, giving Mike a profit of approximately £725,000.

FLOORNET.
Manufacturers and suppliers of quality wood floors.



Floornet is a group of manufacturers providing quality wood floors to the designed residential market. Offering free samples and professional guidance enabling you to select the right product for your project. If you need installation this can be provided via our installer network. Our pricing is competitive and you will receive personal service during the selection process and beyond.

FLOORING PRODUCTS FROM FLOORING PEOPLE.

Please call or email us for more information, brochures and prices.
Visit our studio at: Floor Gallery, Studio G21, Clerkenwell Workshops, 27-31 Clerkenwell Close, London EC1R 0AT (by appointment)

Floornet
Flooring Products

FloorGallery
Clerkenwell

Flooring
Workshop

T 01787 461420 E info@floornet.co.uk www.floornet.co.uk

Dr. Schutz®



PU
ANTICOLOR



- ⊕ Protects floors from discolouring and marking!
- ⊕ Reduces dirt accumulation and maintenance costs!

www.drschutz.co.uk
Tel: 01296 437827



ATHENA
WOVEN VINYL



Intricately woven strands of PVC form highly visual, futuristic creative options which combine extreme durability and comfort, whilst exploring the boundaries of flooring design.

Athena is easy to maintain, waterproof, heat and UV resistant. The woven fabric has variations in tone depending on the light, highlighting its beauty and resulting in a dynamic optical effect. The elasticity and acoustic insulation of its structure give this product great comfort underfoot.

Available in tile and sheet form with extensive stock holdings to enable mainland next day delivery.

Website: www.frlflooring.co.uk Tel: 01282 478220

DON'T GET LEFT BEHIND, WITH THIS YEAR'S BUILD SHOW

Renovation and refurbishment projects ensure that pre-loved buildings and constructions don't get left behind, yet so many professionals involved in refurbishment, renovations and maintenance let their own knowledge, networks and product information fall out of fashion.

The 'Future of Construction' and keeping one step ahead is the theme of this year's Build Show, sponsored by Easy-Trim. As part of UK Construction Week (UKCW), between 9 – 11 October the NEC will be awash with more than 10,000 innovative products and 650 exhibitors, seminars, CPD sessions and networking opportunities that will turn any professional into a competitive, knowledgeable and forward-thinking expert.

FUTURE-PROOFING PROJECTS

The Future of Construction Hub, in collaboration with Birmingham City University, provides an immersive opportunity for professionals to discover digital construction, 3D printing, robotics, AI and AR and modern methods of construction.

Visitors can also experience the state of the art construction simulator from Coventry University.

An Innovation Trail connects visitors with innovating and pioneering ideas, projects and products from Containex, Danosa, Hekim Yapi, Max, SFL Mobile Radio, Soudal, and Velux.

THE PRODUCTS TURNING RESTORATION AND REFINISHMENT IDEAS INTO REALITY

Global exhibitors are showcasing the futuristic solutions that all refurbishment and restoration projects can benefit from.



The Doors, Windows and Glass section showcases new products including: Velux's curved glass rooflight and smart window system; OnLevel's balcony system, making installation even simpler and quicker; and Kensington Traders' UNIQ Glass Balustrade system, with a patented clamping strip and adjustability on unlevel surfaces.

Roofing, Cladding and Insulation will house the latest products including: Tuff Waterproofing's Tuff Tech Pro, which is completely dry within eight hours, and G&B North West's extra cold resin and topcoat, allowing roofers to install throughout the winter. Other exhibitors include: Forticrete, Kingspan, Knauf and Quinn Building Products.

The latest in offsite design, research and development will be discussed in the dedicated Offsite Theatre supported by MPBA and the Structural Timber Association. Products include: Fermacell's energy efficient and eco-friendly building board, and Morland's award-winning offsite fire doors.

Tools, Health and Safety will bring visitors up-to-speed on the latest tools and services saving time and money, such as Soudal's Genius Gun Expanding Foams, reusable for up to six weeks; Rawlplug's new comprehensive and free site testing service; and TRUMPF's battery-driven power tools. Other exhibitors include: Fischer Fixings UK, Kärcher and Trade Point (B&Q).

THE TIPS AND TECHNIQUES ESSENTIAL FOR PROJECT SUCCESS

Perfecting any refurbishment and restoration project is simple with the knowledge being shared at this year's free CPD sessions, covering:

- The role of daylight and ventilation, with Velux;
- Fire doors, with the British Woodworking Federation;
- Sound insulation, with H&H Acoustic Technologies;
- The Internet of Things, with the University of Wolverhampton; and
- Working at height, with AIF.

CPD spaces are limited, making advanced booking essential.

The BRE Academy is also running a separate CPD programme, covering topics such as structural and building investigations, property resilience, fire safety design and more. UKCW H&S sponsor, OM Group, will hold CPD sessions on its stand.

FILLING IN THE GAPS

Visitors can benefit from the other UKCW shows: Surface and Materials, Timber Expo, Energy 2018, Building Tech Live, HVAC 2018, Civils Expo, Plant and Machinery Live and Grand Designs Live on 10-11 October, with highlights including:

- The Regeneration Hub, with talks on Passivhaus at the heart of regeneration and is self-build the future of housing;
- The Construction Enquirer Awards;
- IEMA sustainability conference;
- Announcement of the Role Models initiative's role model of the year; and
- The Beer Festival, sponsored by Velux, featuring rockaoke, a gin and fizz bar and FIX Radio will broadcast from here throughout the event.

Free visitor tickets and updates are available from www.buildshow.co.uk and on Twitter at @BuildShow or using the hashtag #BuildShow2018.

www.buildshow.co.uk

The show for people who build

100+
EXCLUSIVE
PRODUCT
LAUNCHES

BUILD SHOW

Sponsored by

easy-trim
Roofing & Construction Products

9 - 11 OCT 2018 • NEC BIRMINGHAM

Discover 10,000+ innovative products and services from 650+ exhibitors

Join 30,000+ Architects, Builders, Contractors and Project Managers

NEW FOR 2018!

**Roofing, Insulation
& Cladding**

**Doors, Windows
& Glass**

**Tools, Health
& Safety**

**Offsite
Construction**

buildshow.co.uk

#buildshow2018
@buildshow

EXCLUSIVE DATA
PARTNER

Barbour ABI

RADIO PARTNER

**FIX
RADIO**

CONTENT PARTNERS

REA bre

WORLD
ARCHITECTURE
NEWS.COM

AMA RESEARCH

ASSOCIATION PARTNERS

CIAT

**MASTER
BUILDERS**

BMF

HBF

**CONSIDERATE
CONSTRUCTION**

MPBA

GGF

RIBA

MMA

**METAL CLADDING
MANUFACTURERS
ASSOCIATION**

FIS

WICEAWARDS

**FREE TO
ATTEND**



SIME'S UNIQUE INTEGRATED HEAT PUMP AND BOILER BRINGS REVOLUTION TO THE RENEWABLES SECTOR!

The Murelle Revolution 30 is the first integrated boiler and heat pump in a single cased product.

Using an ErP A++ 30 kW Murelle boiler and completely sealed 4kW output heat pump, the Murelle Revolution 30 is a single compact unit that can be installed by any registered Gas Safe installer in a single installation process, without requiring an additional F-gas-registered installer to be present.

The unique Murelle Revolution 30 should be installed inside and hung on the wall like a conventional boiler.

The Revolution provides heat and hot water, achieving an average seasonal heating performance of 134%, granting A++ energy efficiency, according to the ErP Ecodesign Regulation.

www.sime.co.uk



VECTAIRE

Vectaire's MVHRs – vertical and horizontal – are all low energy products with EC motors and ensure optimum ventilation and air quality together with low noise levels, running costs and excellent SFP ratings.

They can now be commissioned via an LCD screen. The upright whole house heat recovery units – the Midis and the Maxis - offer the option of either an integral LCD or a remote LCD commissioning unit, whilst the in-line EVO250 and Mini can be commissioned using the

remote unit.

Thus, the commissioning engineer can easily adjust detailed unit functions including, for example, the trickle, purge and boost speeds for each motor, the length of the boost speed over-run time, the time delay before the boost speed kicks in, holiday mode and night-time boost. These products are SAP PCDB Listed and manufactured in our own factory in the UK.

Tel: 01494 522333

Fax: 01494 522337

Web: www.vectaire.co.uk



GAIA'S UNDERFLOOR HEATING CAN BENEFIT EVERYONE

When specifying heating in domestic properties, underfloor heating (UFH) is increasingly seen as the system that offers the levels of energy efficiency and comfort required. In design terms, UFH provides the added benefit that, unlike radiators, it does not have an impact on interior aesthetics and layouts.

This leaves just one perplexing issue; whether to opt for a wet (hydronic) system or an electric system.

Both offer advantages and disadvantages. Wet UFH systems circulate water

heated to around 45-50°C through loops of pipe laid into the screed of solid floors or the joists of suspended timber floors.

The low temperature of the water used makes these systems energy efficient and ideally suited to use with air or ground source heat pumps or district heating systems. Electric systems use a continuous cable, either laid within the screed or supplied as a mat which is laid above the subfloor.

For further information, please contact Gaia on 01359 242 400 or visit www.gaia.co.uk.

MARMOX THERMOBLOCK TACKLES THERMAL BRIDGING AROUND HARROGATE HOME'S BASEMENT STRUCTURE



Some 180 Marmox Thermoblocks have been supplied to a regional builder for the construction of a high specification home near Harrogate, with their unique combination of insulating and load-carrying properties being used to tackle cold bridging where the two storeys above ground meet the basement structure which contains a swimming pool and other recreation areas.

The five bedroom property has been built by Dobson Construction with a beam and block ground floor being supported off the in-situ concrete basement walls.

The partially filled external wall of dense concrete blockwork, with an outer leaf of quarried stone, was then raised on the continuous course of Thermoblocks.

www.marmox.co.uk



**ECO2022
STOVES**



CAPITAL FIREPLACES

LEADING SUPPLIER OF LUXURY FIREPLACES

Introducing our new range of **A+ ERP 2022** compliant stoves designed in Britain. Homeowners buying one of Capital Fireplaces ECO stoves will reduce emissions by at least 85%.

WWW.CAPITALFIREPLACES.CO.UK



16 REX PLACE, LONDON W1

FT Architects

Rex Place is located in the heart of Mayfair Village, a stone's throw from Hyde Park and the boutiques of Mount Street.

However, when we were appointed, the property had been in the same ownership for many years, and featured the disadvantages of many traditional mews houses – low ceilings, cramped, dark rooms and a dingy rear yard.



Working with Hamilton Hallows and Juliette Byrne, we transformed the property, by lowering the lower-ground floor, adding rear and roof extensions, and completely remodelling the interior, including changing the floor levels and adding a beautiful new staircase.

The result is a contemporary and luxurious townhouse behind the restored façade. We added rear balconies and roof terraces to three levels, plus a plant-filled courtyard garden.

Knowles UK carried out the superstructure and internal fit out, with Mosaic AV providing the integrated technology.

Behind the attractive front elevation, is an elegant and light filled entrance hallway, leading to a formal Drawing Room and Study. French doors open onto balconies, overlooking the lower ground courtyard.

The Kitchen and Dining areas are situated on the lower ground floor, with direct access on to the courtyard garden. We squeezed in a smart utility room in the existing coal vaults, lit by new pavement lights and concealed behind stylish joinery.

The Master Bedroom suite occupies the 1st floor, and opens onto a private rear terrace.

Two further bedrooms and bathrooms are located on the 2nd floor, and a Family / TV room is housed on the top floor, within the steeply pitched roof slopes. A large roof terrace at this level overlooks the rooftops of Mayfair.

Built-in joinery, extra tall doors, recessed curtain rails, the use of mirrors as areas of wall covering, carefully considered feature lights and pale coloured finishes all contribute to the sense of light and space in the house.

We used posi-joists for the upper floor construction, which allowed us to run services ducts and conduits more freely within minimal floor build-ups. Adding 3 steps to the entrance hallway created a sense of occasion upon entry – while allowing us to increase the ceiling height on the floor below.

FT Architects is based in Bloomsbury, and specialises in residential and office projects for private individuals, land owners and property investors. We see our role as to help



our clients achieve their aspirations.

www.ftarchitects.co.uk
www.hamiltonhallows.com
www.juliettebyrne.com
www.knowles.uk.com
www.mosaic-av.com

JUST ARTIFICIAL

Established in 2004, Just Artificial have many years' experience as one of the UK's leading suppliers of high quality artificial plants, trees, silk flowers and related accessories, which they offer at competitive prices.

They have a range of fantastic options which will set your space apart from the rest, allowing you to create an indoor Eden. Their products are highly realistic, durable, and designed with particular care and attention by our master craftsmen, all of whom are experts in their field.

WHAT DO THEY SELL?

The range is always growing, supporting current modern trends as well as traditional needs, for indoor and outdoor use, tailored to complement any house, home office, or business.

Just Artificial offer a complete product range for both domestic and business solutions including silk flowers, floral arrangements, artificial plants, trees (even palm trees), topiary, exotics, plant and tree displays, hedges, fruit, hanging baskets, ivy garlands and other foliage, synthetic lawn grass and astroturf, planters, pot pourri, organza ribbon, decorative butterflies, essential oils, oasis foam, metal wall art, and Christmas supplies.

There's no minimum order so you can buy as much or as little as you need.

SOURCING AND MANUFACTURING

They can usually source what you need even if they don't already list it. If you require a large enough quantity and your project timescale and budget fit (4-6 months or so) we can even get products manufactured to your specifications from scratch.

WHO DO THEY SELL TO?

Practically anyone anywhere? Just Artificial handle large, bespoke bulk orders

for refurbishments and refits on behalf of specification buyers, procurement management, architects, interior designers, and garden landscapers but also handle small one-off orders from the general public.

WHO HAVE THEY SUPPLIED?

Major companies in many industries including ITV, BBC, Channels 4 and 5, Mulberry, Innocent Drinks, Monsoon, Bella Italia, Tescos, Big Brother, The Only Way is

Essex, Coronation Street, Dancing on Ice, Park Resorts, Volkswagen, and more. They've also sold to house builders, zoos, hotels, restaurants, shopping centres, theme parks, colleges and schools, cruise ships, theatres... the list goes on!

Their procurement managers and corporate buyers can provide offers on bulk orders for trade and help you finance your design, and their quotes are no obligation so call them today!

Summer/Winter Pansy Ball Hanging Basket



3.5m Acer Maple Tree IFR



UV Green Wall Systems



Outdoor Petunia Hanging Basket



Bespoke 5m
Ficus Tree IFR

ARTIFICIAL PLANTS & TREES FOR BUSINESSES

At Just Artificial, we work with interior designers, decorators, set dressers, architects and more to set your premises apart from the rest. Our artificial plants, flowers, and trees are highly realistic to look and touch, as well as being durable and attractive.



www.justartificial.co.uk/rfb | 01524 858888 | sales@justartificial.co.uk

GET 10% OFF PRODUCTS
Quote coupon code RFB10 at checkout

Online orders only, single use,
1 per customer. Expires 31/12/2018.
Terms apply* See Website.



WE MANUFACTURE THE LARGEST RANGE OF WINE RACKING IN THE UK PROVIDING THE ULTIMATE SOLUTION FOR WINE STORAGE

Wineracks UK is a family-run company, providing a comprehensive range of high quality wine racks, cabinets and other storage solutions. We have built our reputation by building our wine racks with the finest materials, to not only provide you with a storage solution that is tailor-made for your wine cellar, but also to ensure that no matter which option you choose, your wine storage will preserve your wine or champagne for generations.

Our reputation for quality products at affordable prices, combined with great personal service, means that we now have clients in every corner of the world, as well as across the United Kingdom. From luxurious hotels to countryside restaurants and private residences.

Call now for a quote..... Tel: 0115 9441434
information@wineracks.co.uk www.wineracks.co.uk



A WHITE ROOM

A White Room have been supplying Contemporary Furniture & Lighting around the UK to both the contract and domestic markets for over 12 years. We specialise in the supply of Jesse Italian bedrooms and have the expertise to help with space planning and CAD visuals.

We welcome Trade accounts and already work exclusively with some well known design practises in the UK, offering good trade rates. If you're an Architect, Interior Designer or a Construction company and would like to open a trade account please contact us today.

We have a passion for design and a focus on customer satisfaction and also supply some of the most sought after branded furniture in the world, either as one off pieces or for large projects.

We also supply bedrooms and living furniture to domestic customers looking for one off bedroom pieces or complete solutions.

Please call us on 01282 862626 for a friendly chat about your requirements or alternatively email us on info@awhiteroom.com. Please also feel free to visit our website at www.awhiteroom.com



JS DECO BESPOKE FURNITURE

JS DECO is the business creation of Jacek Sobis, a qualified expert in wood and furniture manufacturing. Since 1995, Jacek, driven by his passion for the art of making furniture, has steadily been perfecting his craftsmanship and technology. With a solid educational background and many years of hands-on experience behind his belt.

Jacek strongly believes in the superiority of bespoke, tailor-made furniture over their mass produced equivalents. While standard pieces limit your choices to what is available on the market, bespoke furniture is built to the

perfect fit, reflect the individual style of the owner and match the overall character of the design. Sky (and your budget) is the limit when choosing from the array of materials, appliances and furniture solutions.

We are here if you are looking for dedicated furniture supplier.

www.jsdeco.co.uk
j.sobis@jsdeco.co.uk



DESIGNER FLOOR OR DESIGN FLAW?

You plan. You design. You install. You worry about every little detail to make sure it's perfect. Now you can protect your investment in flooring and furniture with cost-effective ideas from solutions specialist Stroolmount. Peace of mind protection pays dividends says Stroolmount's Gill Finch: "We save architects, designers and refurbishers thousands in costly repairs, replacements and insurance claims with simple protection solutions costing as little as 1p". As well as innovating to solve customer problems, Stroolmount is a one-stop solutions shop for all these and more:

Furni-Glides: Self-adhesive or screw into very heavy furniture so it slides easily across carpet.

Quickclick glides: Multi-award-winning long-term solution. Its click-in interchangeable and replacement base glides help protect wood, laminate, vinyl, carpet and tiled floors. **Self-adhesive felts:** Short-term high quality anti-scratch solution to cushion floors from heavy furniture. **Move it pads:** Temporary solution so anyone can easily glide heavy furniture across hard floors and carpet like magic.

www.stroolmount.co.uk
 01942-271271

JANET YONATY



310.659.5422

WWW.JANETYONATY.COM

WEST HOLLYWOOD, CA



JANET YONATY INC. CATERS TO INTERIOR DESIGNERS AND ARCHITECTS FOR BOTH RESIDENTIAL AND HOSPITALITY PROJECTS. OUR 6,000 SQUARE-FOOT SHOWROOM SPACE IS FILLED WITH UNPARALLELED COLLECTIONS OF TRIMS, RUGS, FURNITURE, TEXTILES AND WALLPAPER, WITH OPPORTUNITIES TO CUSTOMIZE ALL THAT THE COMPANY HAS TO OFFER.



THE MILL HOUSE

OB Architecture

The Mill House is a Grade II listed property located in Shalford village Conservation Area. The house is set within a generous 6-acre plot with stunning views adjacent to 'Shalford Mill', an 18th Century watermill with Grade II * listing.

The Client's brief was to extend and remodel the house at ground floor to provide a light filled kitchen dining area that would open out to maximize the potential of the beautiful garden. The existing kitchen and utility room was the result of a poorly designed 1960's extension with small windows and a very low ceiling.



The existing house has undergone many changes during its lifespan and the building's four elevations are varied in character and style. It was in this context that we looked to create an addition that was clearly of its time but would continue the tradition of the building's evolving history and materiality. The design thus strives for a 'contextual modernism'.

The design concept is based on a sketch of the house circa 1836 that shows a cluster of pitched roof forms which have been removed over time. The footprint of the extension is located on the original foundations of these previous structures and reinstates the historic courtyard.

The roof is constructed from an oak glulam frame and clad in a bronze standing seam that has a beautiful weathered texture that compliments the earthy hues of the red brick and stone on the main façade. The roof design features two triangular rooflights which bring light deep into the plan. The hipped roof echoes the form of the single storey bakery building on the opposite side of the courtyard.

The dining and living spaces are defined by the structural layout and vaulted roofs of the two bays formed by the six oak columns. The kitchen is located at the rear under the original roof structure which has also been vaulted and in so doing reveals the existing chimney breast which was repaired and restored.





The living space is orientated to a large brick chimney and stone hearth, designed as a modern interpretation of the chimney to the main house. The living and dining spaces are fronted by full height bi-folding doors in a dark bronze finish that match the proportions of the leaded windows on the main façade.

At the four corners of the extension frameless glass-to-glass corners are employed to create a seamless transition from inside to outside.

On the external elevation of the new chimney the house motif that can be seen on the main staircase and Dutch



gable façade is reappropriated as a large scale CNC stone cut pattern and exemplifies our contextual approach to the design of this project.

On all our projects, sustainability is a major consideration and we take a pragmatic, fabric first approach. The highly insulated extension requires very little input in terms of heating or cooling and maintains a steady temperature within.

The existing vaulted timber frame roof is fully filled with rigid insulation and the bronze roof has a warm roof construction to the exterior surface; both achieve excellent u-values. This fabric combined with good airtightness, results in low





heating demand and limited heat loss.

What heating is required, is provided by efficient under floor heating, keeping operating temperatures low and maintaining a steady internal environment. This is augmented in the winter by a wood burning stove.

The predominately East facing extension allows for passive solar gains in the winter with the sun warming the space in the morning. Conversely the orientation of the building and the position of the brick chimney provides shading on warm summer afternoons.

Full-height double glazing on all three sides of the plan make the most of natural light limiting the need for artificial lighting. Low energy LED lights are used throughout, keeping energy demand low.

In all aspects, the extension was designed to be as low-maintenance as possible, which adds to the sustainability of the project: the exterior surfaces consist of bronze standing seam for the roof, brick for the walls, and highly insulated double-glazed window units - none of which require any maintenance or treatment.

Site waste was limited wherever possible; reused or recycled, and remaining waste disposed of responsibly. Materials were selected for their renewable qualities and low maintenance requirements.



www.obarchitecture.co.uk
 Images: Martin Gardner

COULSON'S BRIDGES LTD

Coulson's Bridges design and manufacture a range of arched timber footbridges that can be placed over lakes, streams or ponds adding a distinctive, focal point to any garden.



The laminated construction of the bridges gives great strength combined with graceful proportions which enables functional yet elegant designs within a curved arched structure.

Produced from a choice of timber, standard bridges are made in several classic designs including: Monet, Edinburgh, Chinese and Japanese, in any size up to (12.2m) 40'.

Available finished in a wide selection of colours these will compliment most garden styles.

As all bridges are built to order, we can also construct non-standard designs to customer specifications in almost any size to fit your particular surroundings or create the perfect look to reflect your garden style.

Designed for straightforward installation, each bridge is delivered as a complete kit in the form of side sections and deck ready for assembly on site.

All drawings, site preparation details, and foundation specifications are produced and supplied in advance along with detailed installation instructions.

For more information about our bridges please visit www.coulsonsbridges.co.uk or call us on +44 (0)1986 875016

H₂O SWIMMING POOLS LTD



Before



After

H₂O Swimming Pools Ltd has developed over 30 years of experience and has become a leading company in the south east. The company maintain, design and build swimming pools and install hot tubs, and are GasSafe and OFTEC registered as well as a member of SPATA and a Which? Trusted Trader.

Whether you have an existing pool and equipment that needs repair and renovation or are looking to have a new pool built, they offer a choice of designs, heating, lighting, equipment, covers and surround paving so you can have a pool to suit your home, lifestyle and budget.

www.h2oswimmingpools.co.uk Contact 01342 844555 or info@h2opools.co.uk



OSMO REVIVES AGED WOOD WITH HIGHLY EFFECTIVE POWER GEL

Osmo UK, the eco-friendly wood and finishes specialist, brings tired looking and aged wood back to life with its powerful cleaning agent, Osmo Wood Reviver Power Gel. This product has been especially developed to restore exterior wood, including wooden decking, timber cladding and garden furniture, back to its original colour and character.

Available in 0.5l and 2.5l, Osmo Wood Reviver Power Gel is a jelly-like cleaner that effectively cleans and refreshes greyed and weathered exterior wood. Made from environmentally friendly and biodegradable

ingredients, the product is free from harmful solvents, chlorine compounds, amines and harmful odours. One coat of Osmo Wood Reviver Power Gel is sufficient to revive external wood back to its natural colour and appearance. This product is most effective on untreated wood that has been left to age.

For stockist details and more information on Osmo and its range of environmentally friendly wooden products and specialist finishes, call Osmo UK direct on 01296 481220 or alternatively visit www.osmouk.com.



COMPOSITE PRIME

Architects are being drawn to Composite Prime's® HD Deck® and HD Fence ranges, utilising the latest composite technology to produce a long life, low maintenance, slip-resistant material which outperforms traditional treated timber.

Highly attractive, it's also environmentally friendly, containing FSC® 100% certified hardwood timber and recycled plastics.

Composite deck boards, available in different colours, easily replace worn timber boards using the existing frame at 300mm joist centres.

HD Deck 150® offers a contemporary look, longer life and reduced maintenance over traditional timber. HD Deck Dual® uses the True Grain™ colour system to create the look and feel of traditional timber without annual maintenance and treating. Unique Dual sided colours allow decks to be laid with contrasting colours. Also among the naturally evolving range is extra-strong decking, HD Deck® XS.

Composite Prime®:
0113 426 2770
hello@composite-prime.com
www.composite-prime.com



PORTSMOUTH'S CREATIVE QUARTER THRIVES WITH KEBONY RENOVATION

ERMC Architects



The Hotwalls Studios provides local artists in Portsmouth with studio space whilst creating an important focal point for the city's burgeoning creative community and cleverly embracing the unique heritage of this historic site. Kebony, an enhanced wood from Norway, was selected by leading architects ERMC Architects to provide the internal flooring for all thirteen studios, the canteen and exterior decking, complementing the renovation of this previously vacant Victorian fort and maintaining the charm and timeless nature of this site.

Once an integral part of the city's historic defences against invasion, the Hotwalls Studios has been given a new lease of life, to enhance the city's creative industries and provide new business opportunities for the local community. The architects brief was to develop multiple artist studios and a brasserie, however the ambitious vision of ERMC and their commitment to complete a sensitive restoration resulted in this stunning project, which far exceeded

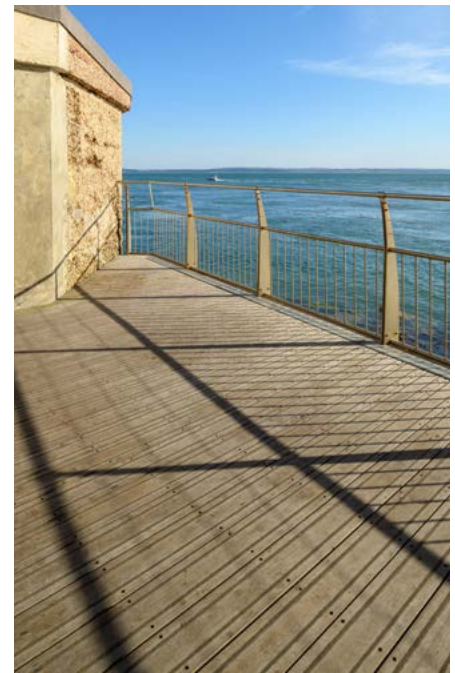
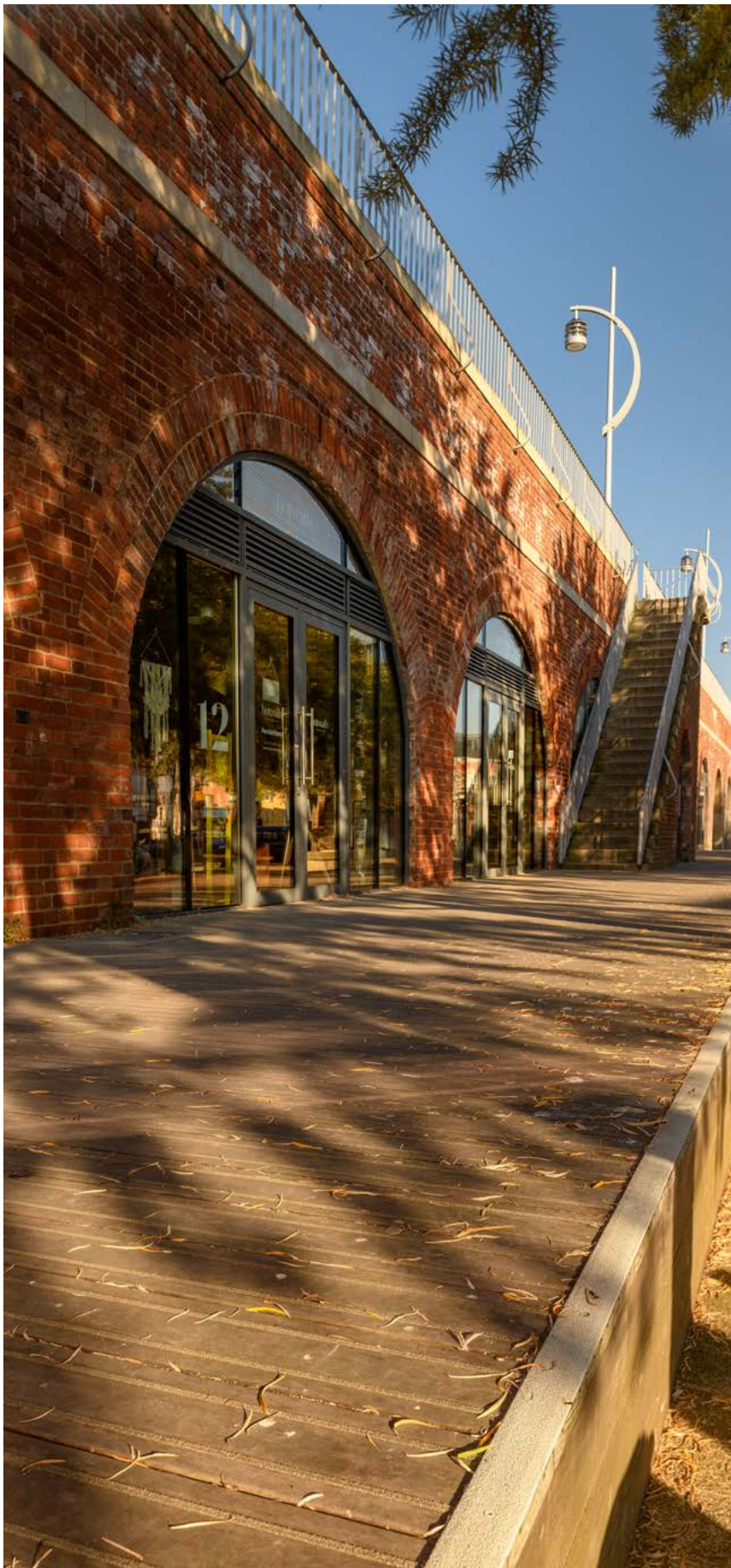


expectations and has become a building that all of Portsmouth can be proud of.

Each converted casemate now forms a self-contained and versatile workspace ideally suited to artists. Utilising a pragmatic approach to modernisation, the robust form of the studios arches remains a dominant feature, with the existing surfaces and textures serving as both naturalistic decoration and a reminder of the structure's historic significance. An outdoor terrace as well as an internal flooring solution has been constructed over the existing stone plinth with Kebony wood. This allows visitors and artists alike to relax and take in the spectacular views of the seascape so rarely observed from this location. Kebony was the perfect material for the terrace and internal flooring due to its enhanced durability and hardwearing nature.

Developed in Norway, Kebony's revolutionary technology is an environmentally friendly process which modifies sustainably sourced softwoods through a patented process using a bio based liquid from agricultural production which is impregnated into the wood.

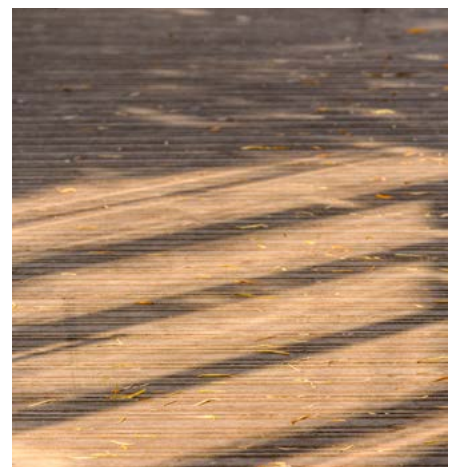




The process permanently transforms the wood cell structure to give Kebony the attributes of tropical hardwood including high durability, hardness and dimensional stability.

Deniz Beck, Chartered Architect at ERMC commented: "We are overwhelmed with the response received for the Hotwalls Studios. This project was certainly not without its challenges and required significant planning in order to maintain the structure's status as a heritage monument. Kebony was instrumental in achieving our ambition; the material was incredibly robust and good-looking and we are already looking to use Kebony again in another exciting seafront project."

Adrian Pye, International Sales Director at Kebony added: "It's wonderful to see how this ambitious project has become such an integral part of the city's artistic community. We are always very proud when Kebony is used in a project of this nature, and we look forward to working with ERMC again in the future to contribute to another equally special development."



www.kebony.com
Images: Jonty Sexton

Bromleighs

Bromleighs offer an extensive range of switches and electrical accessories to suit both period and contemporary interiors.

Their Forged and Profile Collections are hand-made at their workshop in Cornwall, using inserts manufactured here in the UK.

The Hardwood, Bakelite and Period Switch collections are made with British Oak which is hand-stained and waxed. Bromleighs also supply a wide range of interior and exterior lighting and architectural hardware.



For further information, please call the team on 01208 79490 or www.bromleighs.com or email info@bromleighs.com

HIGHLIGHTING HISTORY WITH PHOTON BEARD LIGHTING

Photon Beard is one of the UK's oldest lighting manufacturers, whilst we are primarily used for film and TV broadcast in recent years we have supplied a number of historical conservation facilities including the V&A museum in the Clothworkers Centre and a National Trust restoration studio.

Our Highlight range is an ideal light for conservation work as it offers a cool white light which limits the potential damage to delicate historical artefacts. Having a truly white light allows accurate replication of colours in artistic pieces and the soft focus design of the highlight removes over exposure ensuring an even plane of light to work with. Our customers find them a user friendly and affordable solution when industrial lighting fixtures are required.

We offer both fluorescent and LED options for the highlight range designed to fit any space no matter how big or small. All photon Beard lights are designed and manufactured in the UK. We offer a full service from consultation to install and aftercare. We are always happy to visit your location and discuss personal requirements whilst demoing our lights in your work space. Visit www.photonbeard.com for more information.



Innovative, beautiful and reliable indirect downlight with ultra-low glare

With a unified glare rating (UGR) as low as <6, the new elegant indirect downlight from Verbatim features a unique design that emits light indirectly by first directing it into the reflector creating uniform and ultra-low glare illumination. The actual light source remains invisible for the eye of the observer.

The luminaire has been designed by German lighting designer Arne Fiedler in collaboration with Mitsubishi Chemical's R&D team in Japan and will primarily be used for general lighting in all types of indoor environments requiring visual comfort and a low level of glare such as offices, reception areas but also corridors, foyers, hotels, restaurants, display rooms and shops.

The design was taken from Verbatim's popular AR111 lamp which mimics the lighting effect of a traditional halogen QR111 lamp. It uses superpolished aluminium for the reflector maximizing light reflection while decreasing optical loss.

Glare from lighting creates visual discomfort and impairment of vision which can have a negative effect on productivity, especially in working spaces where individuals are exposed to artificial light for many hours a day. Verbatim solves this problem by providing perfectly controlled luminance in accordance with DIN EN 12464 and even more with a UGR as low as <6 (depending on the beam angle), ensuring an exceptional visual comfort.

The innovative and unique heatsink provides excellent thermal management by encouraging the heat to dissipate more quickly, justifying



its long lifetime of 70,000 hours (L80B10) and extended warranty of five years. It provides energy savings and is suitable for partially covered installations with insulating materials used in false ceilings.

The downlight appeals not only through its performance but also through its design, integrating beautifully into the ceiling due to its attractive appearance while delivering a homogeneous illumination.

The chip-on-board LED technology, which was selected by Mitsubishi Chemical, offers a narrow binning of McAdams step<3, which guarantees a high level of colour consistency with possible CCT variations being

too narrow to be distinguished by an average human eye.

The Verbatim Indirect Downlight is available in 8 versions: two beam angles, a 40° version for general lighting and a 25° version for accent lighting. The downlight is available in two different diameters (Ø155mm and Ø 205mm) and two different colour temperatures (3000K / warm white, and 4000K / cool white). The downlight is also IP40 rated preventing ingress of insects and dust, is flicker free and has a DALI option.

For more information, please contact us via e-mail at LED@verbatim-europe.com





LED Indirect Downlight

Glare-free and exceptional visual comfort



LONDON BUILD



23 - 24 OCTOBER
OLYMPIA LONDON

Architecture for London

London's leading construction and design show, London Build, will return to the Olympia London on October 23rd & 24th. Since its launch four years ago, London Build has established itself as the largest construction show for London, covering all sectors within the built environment. After reaching full capacity in the Central and West halls, London Build will be moving to the Olympia's National Hall for this year's show.

The extensive exhibition will feature over 300 exhibitors, including Bentley Systems International Limited, Daikin UK, Kingspan, G-SMATT Europe, Powerday, Topcon, British Steel, Blok N Mesh, Aedas, RedSkyIT, Johnson Controls, Ideal Standard, Procore, Trimble and Catnic. Hundreds of leading suppliers will be showcasing their latest innovation,

products and services across 9 specialised zones: Buildings, Infrastructure, BIM & Digital Construction, Fire Safety, Interior and Fit-out, London Design, Product Innovation, Site Machinery & Equipment and Sustainability.

Each zone acts as the focal point for eight 'Summits' – with over 200 hours of free CPD conference and workshop sessions discussing the latest developments, challenges and opportunities across the UK's built environment. This is your one-stop-shop to gain all over your CPD points over two days.

Speakers include senior representatives from Greater London Authority, Crossrail, Homes England, Heathrow Airport Ltd, Tideway, Mace, Laing O'Rourke, Costain, HS2, Skanska, Land Securities, Balfour

Beatty, Transport for London, Clancy Docwra, TateHindle, L&Q, Space group, Sir Robert McAlpine, David Miller Architects, Sweco UK, HKR Architects, Zaha Hadid Architects, Royal Docks Team, Paradigm Housing Group, Mott MacDonald, Arup, AECOM, Kier Group, Mace Group, Scott Brownrigg, Bouygues, Canary Wharf Group, Vinci, Interserve, Wates, Skanska, BPD and many more.

London Build is extremely active in the promotion of inclusivity, diversity and equality in the industry. The annual Women in Construction Morning Networking session, now in its third year will take place on October 24th, attracting thousands of empowering women working in construction. This is the largest gathering of women in construction in the UK.



This is not your average construction show, there will be loads of entertainment, competitions, networking parties, including the construction industry's very own Oktoberfest and Festival of Construction Hour. The involvement of 100+ high profile partners such as Constructing Excellence Club, Construction Meet the Buyer, BIM Open Mic and Passivhaus, enables London Build to continue delivering on the exciting content and high-level networking for all in attendance.

The Built Environment Networking Hub will host free-to-attend exclusive networking events across two whole days. Build your connections, gain inspiration from industry thought-leaders and win business at the show which offers it all.

A few words from the shows exhibitors and attendees:

"It's the first time we've exhibited at London Build and it was great to talk to so many people across the industry. We found the show very effective to raise awareness of the British Steel brand and let the construction sector know that we don't just manufacture steel – we also sell a range of construction products through our distribution channels" - Lisa Coulson, Marketing Manager, British Steel

"Besides the exhibition and speaking opportunity we had at London Build, we really appreciated the business appointments program proposed by the London Build organization team. The team swiftly understood our targets and needs, which led to very high quality meetings and real business opportunities" - Aurelien Blaha, Marketing Director, FINALCAD

Join 20,000+ industry professionals at London's leading construction show and register today for your free ticket: www.londonbuildexpo.com/mh-mag-register



Women in Construction – the critical solution to a skills shortage

The drive to encourage and retain women in construction roles is a critical solution to the skills shortage and a topic of enormous importance to the industry at large.

One only has to consider the 300,000 new homes that are to be built each year, and the need for more than a million extra workers by 2020, to realise the enormity of the challenges ahead. Figures suggest that women are expected to make up more than a quarter of that workforce by 2020, but more can and should be done, with some experts believing the figure will be more like half of the workforce.

Looking back to 1988, less than 7% of the full-time construction industry workforce in Britain were women. By 1995, the Equal Opportunities Commission stated in its annual publication that women continue to be significantly under-represented particularly in the construction sector.

The situation is improving with wages rising, albeit slowly, and the proportion of women in senior roles has almost trebled since 2005, providing some hope that the misconceptions around construction being a gender-specific industry are at last being removed. But, a survey by Randstad in 2018 discovered that out of 1,200 people that have experienced gender discrimination (33%), 60% were women, and more than eight in ten women feel left out and excluded from male-oriented



conversations and social events. Not only are these figures disturbing, but the survey revealed 43% of organisations do not actively monitor pay equality.

Encouragingly, there are parts of the industry that have recognised the urgent need to address these inequalities, and we at London Build 2018 are a part of that drive. We've been hosting our Women in Construction Networking Event for two years now, and are thrilled that through the growing support from industry, we are able to offer inspiring leaders the platform to encourage and inspire the younger generation and more women to challenge the barriers to entry and aspire to a more diverse workforce.

At last year's event, we worked with NAWIC, Built by Both, Women in Property, the Federation of Master Builders and many more key industry figures, registering 1,150 female visitors to the session. We aim to make this year's event to be even bigger and remain the UK's largest gathering of women working in construction!

This year, we've partnered again with NAWIC, and are delighted that Women in BIM (WiB) and many other industry leading bodies have come on board to bring this free-to-attend event for all, offering the chance for professional individuals operating in this market to network and feel inspired.

Not only will we have a great supply of refreshments, but you'll hear from a panel of established female experts discussing the untapped opportunities for women, get any of your questions answered, and to network.

However, we are taking our commitment to shine a light on our women in construction one step further this year by creating our Women in Construction Ambassador community.

We have an impressive list of Women in Construction Ambassadors that have agreed to help us to drive equality and diversity in the built environment, but we'd like more to join. These incredible ladies

are already a part of our community:

Cristina Riley, Senior Planner Kier Group & Vice Chair Kier LGBT & Allies Network
Kathryn Lennon Johnson, Founder, Built Environment Skills in Schools;
Anne Timpany, CEO, On Tap Plumbers;
Kirsten Galea, Senior Associate Architect, West Williamson and Partners;
Nicola Coppen, Utilities Project Manager and Chair – Kent & Medway Construction Guild, Ebbsfleet Garden City;
Fiona Barry, Divisional Marketing Manager Kingspan Insulated Panels, Kingspan Ltd;
Marta de Sousa, Property Expert, LUX Reality;

Fiona Alfred, Director, Women in Property;
Anna Vincent-Gill MRICS, Consultant, Naismiths;

Angela Steele, Owner, Opportunities With Experience CIC (O-W-E);
Ruth Whitehouse, Recruitment Consultant Residential Team, PSR Solutions;
Christine Townley, Skills and diversity champion;
Marie Grieve, Director, Costello Palmer Communications;
Sarah Davis, Founder and CEO, Skills4Stem Ltd.

Christine Townley told us that
"I chose to become an Ambassador because the built environment is still very much dominated by men, and while there are great campaigns and activity seeking to address this there is still much to be done.

"Working with like-minded women creates a larger mass that hopefully can show young women why construction is a good place to work and remind us all that there are many talented women from a broad range of backgrounds working in the sector."

And Kirsten Galea said:
"I signed up for being a Women in

Construction Ambassador for London Build because I'm always interested in helping to showcase the valuable role women have in this industry, as we currently lack representation.

"As Co-founder of 'Women at Weston Williamson' (@womenATww) and board member of 'Women in Transport' (@transportwm) I'm always trying to get organisations to work together. I think we can achieve more if we join forces. Therefore I think it just makes sense to join this like-minded community of women in construction at London Build.

"And if we even just make one young girl find her passion for the industry, our time and efforts will have been worthwhile!"

Nicola Coppen said:
"Being a London Build Ambassador is complimentary to my role as the Chair of the Kent & Medway Construction Guild, where businesses, education and training providers all come together to promote the industry and the wealth of careers within.

"I am particularly keen to ensure that women and all of the younger generation consider a career in construction and am an active Business Mentor in local schools and colleges as well as forming a second business '4Roles4Goals' which helps young people bridge the gap between education and the workplace, focusing on roles within the construction industry."

Finally, Christina Riley told us:
"I agreed to be a WiC Ambassador because I have worked in the construction industry for over 25 years and for the last 18 years as a Senior Planner. Over that time it has become apparent that female talent still has a long way to go before it reaches true equality of

opportunity in our industry.

"With only around 11% females working in our industry and only 3% out on-site, we still have a lot to do to change the image of construction so that more women join our industry and remain in the sector.

"We need more visible role models who are out on the front line and on-site to help close the skills gap and increase the talent pool.

"I am proud to be invited to be one of the 2018 London Build WiC Ambassadors."

By joining us, you'll attend the morning tea networking event and meet with our selected group of Ambassadors, allowing you to not only strengthen and build your existing network of contacts but to become part of a more significant community of like-minded business leaders. Also, we would encourage you to share your experiences and best practice with aspiring minds and demonstrate the exceptional opportunities a career in construction can offer.

It's essential for us to tell the many fantastic career stories within the industry and hear from inspiring women on what they have achieved and how they can motivate others to follow a similar path to success. So, what more of a reason do you need to come along and be a part of our community?

The Women in Construction Morning Tea is taking place on 24th October at 10:00am-12:00pm in the Built Environment Networking Hub. Register for your free tickets now: www.londonbuildexpo.com/wic

And if you're interested in getting behind us to drive equality and diversity in the built environment as a Women in Construction Ambassador, simply get in touch with the team at wic@londonbuildexpo.com.



www.londonbuildexpo.com/wic



SHACKERLEY FAÇADES COMPLETE

OFFICE-TO-RESI TRANSFORMATION IN BRISTOL

The Milliners is a six-storey office block in Bristol that has been converted into 109 apartments for London and County Estates by Headoffice3.

The façade design needed to consider local context while providing a robust, high quality finish, leading to the specification of Shackerley's SureClad® ventilated façade system.

DETAILED SPECIFICATION

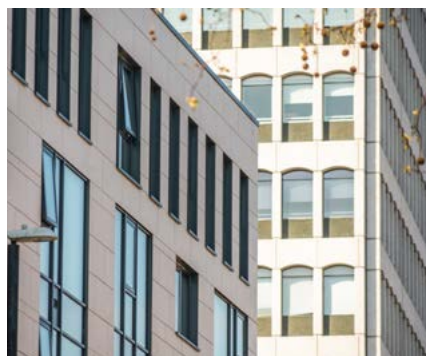
The project comprises a mix of studio, one-bed and two-bed apartments and penthouses with panoramic views. All two-bed apartments have allocated parking and roof terraces, which contributed to the cladding detailing requirements.

Explains Ian Blakemore from Task Contract Services, the cladding sub-contractor on the project: "The upgrades and modifications introduced as part of the conversion created some significant detailing challenges.

"We needed bespoke detailing to accommodate both the protruding balconies to the rear of the building and the windows, which are flush to the façade, so it was vital that Shackerley prefabricated every façade panel to our exact dimensions."

RE-IMAGINING THE FAÇADE

The building was stripped back to the concrete frame and Headoffice3 specified Shackerley's SureClad® ventilated façade



system with ceramic granite panels, along with new windows and insulation to improve the building's thermal performance.

New structural infill panels were inserted between the concrete frame slabs with insulation fixed to the new external wall surface. The SureClad® ventilated façade system was then installed using Shackerley's Queen's Award winning SureClad® Access installation system. For one of the elevations, to aid soundproofing, the SureClad® ventilated façade was used in combination with the Kingspan BENCHMARK Karrier Panel system.

Ian Blakemore continues: "Because the SureClad® Access system allows non-sequential installation of panels, we had the flexibility to move around the



building and work on different sections as required."

INSPIRING AESTHETICS

The majority of the ceramic granite cladding was specified in a creamy 'Travertine' colourway with a natural honed finish, creating a high-end aesthetic that mimics the look and texture of locally-prevalent Bath Stone. Beige 'Volcador' in the same natural honed finish has been used to complement the 'Travertine' and provide subtle contrast.

David Smith from Headoffice adds: "The SureClad® ceramic granite system provides the appearance of Bath Stone with a much slimmer, stronger, yet more lightweight panel, which is Class A1 for resistance to fire and is impermeable, ensuring freeze-thaw resistance by preventing moisture penetration."



**One of the UK's leading manufacturers of ceramic granite,
engineered stone and quarried stone façade systems**

Our team of expert Façade Consultants are always on hand to advise you on the very best cladding solution for your next project.

Contact us to see how we can help you.

+44 (0) 1257 273114 | www.shackerley.com



SHACKERLEY PROVIDES SURECLAD® ENGINEERED STONE SOLUTION TO AWARD WINNING EDINBURGH PROJECT

The University of Edinburgh's Appleton Tower was designed by Alan Reiach, Eric Hall and Partners as part of the University's George Square development in the 1960s.

Now the building's pre-cast concrete and aluminium frame glazed façades have been stripped out and replaced with Shackerley's SureClad® engineered stone ventilated façade system in a white, honed colourway as part of a programme to renew the building envelope and construct an additional storey at roof level and a new feature entrance. Specification of a SureClad® engineered stone

ventilated façade system offered a cost-effective route to providing an aesthetic that echoed the appearance of the façade of the University Informatics Forum directly opposite. The relative light weight of the 15mm SureClad® panels also satisfied the loading capabilities on the remaining concrete structure and enabled full insulation of the building within a ventilated façade.

The finished project has recently won a RICS Award for Design Through Innovation.

www.shackerley.com
Telephone: 01257 273114
info@shackerley.com



RCM FIRST, AND CURRENTLY ONLY APPROVED STOCKIST OF ROCKPANEL (FS-XTRA)



RCM, Roofing and Cladding Materials Ltd, a specialist in complete through wall solutions, are delighted to be the first, and currently only stockist of A2 Rockpanel (FS-Xtra) in the UK.

RCM are now able to offer Rockpanel (FS-Xtra) in a selection of colours directly from stock.

Made from compressed mineral wool, originating from basalt, Rockpanel has the strength and durability of stone, yet the workability of wood.

The addition of this 'stone-based' cladding further enhances RCM's already extensive facades offering. Recent supplied projects by RCM have included the University of West England in Bristol, where over 1,000m² of Rockpanel Metallics were supplied to newly built high-quality student accommodation on the Frenchay campus.

Rockpanel is suitable for use as exterior cladding, applications along the roofline and for building detailing.

www.buildingboards.co.uk



Endon Roofing limited are a leading provider of domestic and commercial roofing services in the North of England. Their directors have over 25 years knowledge and experience in the roofing industry, and are licensed installers of several leading material manufacturers systems. All roofs are installed by fully trained and CSCS certified personnel and they would welcome the opportunity to assist you in your next roofing project.

Products Installed

- Singly Ply Membrane
- Green Roof Gardens
- High performance felt
- Liquid plastic roofing systems
- Leadwork
- Slating / Tiling

Services Provided

- Roof survey and report
- Reactive maintenance

For a free, no obligation quote, get in touch
estimating@endonroofing.com
01924 270822 www.endonroofing.com



Imitation is always flattery...

But none can match the excellence of a system that is truly complete

THE UNIFOLD GUTTER LINING SYSTEM.

Having faced and solved every problem experienced in its long life with consummate ease **UNIFOLD** remains THE **GOLD** STANDARD to which others aspire!

UNIFOLD – Unrivalled excellence in Gutter Lining Technology.



AMPTeam

UNIFOLD® Unrivalled excellence
in gutter lining technology.
www.gutterliners.com



ADVANCED PROTECTION FOR NATIONAL RAIL COLLEGE

A key driver in the successful delivery of the UK's £42.6 billion HS2 project, the new National College for High Speed Rail, is now protected by industry-leading fire panels from Advanced.

Located in Doncaster, a town historically known for its prominent role in rail engineering and maintenance, the college occupies 76,000 sq ft of teaching and workshop space, with specialist training installations, including 150 metres of external track and catenary. It will train thousands of engineers to meet HS2's future needs, as well as those of the wider rail

sector.

With 2,000 apprenticeship opportunities set to be created by HS2, and 25,000 people employed during construction, there has been, and continues to be high demand for appropriately skilled workers.

The Advanced MxPro panels were specified by the team at GBE Fire and Security, who were appointed by main contractor Briggs and Forrester to specify, install and commission the fire system at the site.

More details can be found on the website at www.advancedco.com



NEW AICO 3000 SERIES FIRE & CO ALARMS FOR FULL CIRCLE PROTECTION

Aico, the UK's market leader in domestic mains powered Fire and Carbon Monoxide (CO) detection, has launched the new 3000 Series. This technologically advanced series detects both Fire and CO and includes, for the very first time, a Multi-Sensor Heat & CO Alarm, providing whole property coverage from one Series.

"The 3000 Series represents one of the most significant advances of the Aico product

range in recent years" states Aico Managing Director Neal Hooper. "It's the coming together of the very latest alarm technologies with Aico's reputation for unbeatable reliability and quality. We refer to the 3000 Series as having 'intelligent simplicity' - we've built intelligence in to every alarm whilst ensuring simplicity for every install."

For more information, please visit www.aico.co.uk/3000series.



THE KEY SAFE COMPANY UNLOCKS SUPPORT FOR BUILDERS

The Key Safe Company has revolutionised the way in which builders can access jobs quickly and efficiently.

Its leading Supra C500 KeySafe™ is a locked metal box, which provides a secure method of externally storing keys to the exterior of a property. The key safe can hold up to six keys and is being used by builders to gain access to a property when owners are unable to be on site.

The product allows builders to conveniently come and go from the property without having to rely on homeowners taking time off work or arranging for spare keys.

All this allows workers to save time and money without encountering unnecessary restrictions.

For more information about the Supra C500 KeySafe™ visit www.keysafe.co.uk



VID FIRE-KILL APS

VID Fire-Kill is a world leading innovative developer and manufacturer of water based firefighting products. We specialize in fixed water-based systems utilizing environmental friendly firefighting methods through low pressure watermist technology.

Our products are unique, offering either a better performance, a better approval, or a better solution than what found on the market today.

Appreciating good architectural designs, we do our utmost to create fire protection products which aesthetically blend into the surroundings in new as well as heritage buildings. As something unique our nozzles can be delivered in any color and with any optional print, making them almost invisible once they have been installed.

www.vid.eu
+45 6262 1024
sales@vidaps.dk



BESPOKE GARDEN ROOMS FROM OECO GARDEN ROOMS

Oeco Garden Rooms is a family run business and have been manufacturing and installing timber framed structures for over 10 years.

They specialise in building bespoke garden rooms, offices and studios for those who want to extend their living space for a multitude of uses.

Made from a traditional timber frame construction, concrete pile and steel foundations and PVC-U windows and doors,

these garden rooms are built to last and can be used all year round. Western red cedar external timber cladding finishes off the look, providing rich and varied browns, reds and pinks making each garden room unique.

Visit www.oecogardenrooms.co.uk or contact one of our sales team on 0800 170 1270 for more information or to request a brochure.



TARGET TIMBER SYSTEMS

Traditional Values using Modern Methods of Construction



If you are a Property Developer or Builder looking at Timber Frame structures for Houses and Apartments, or a family looking for their dream Self-build Home Target Timber Systems are here to help.

We offer a professional service which includes fully certified design and engineering, supply and erect of factory insulated panels, engineered floor beams and floor deck, roof trusses and bracing along with full chain of custody certification."

For further information please contact Gary Gooch or Nick Whittle on **01403 782600** or email info@targettimber.com

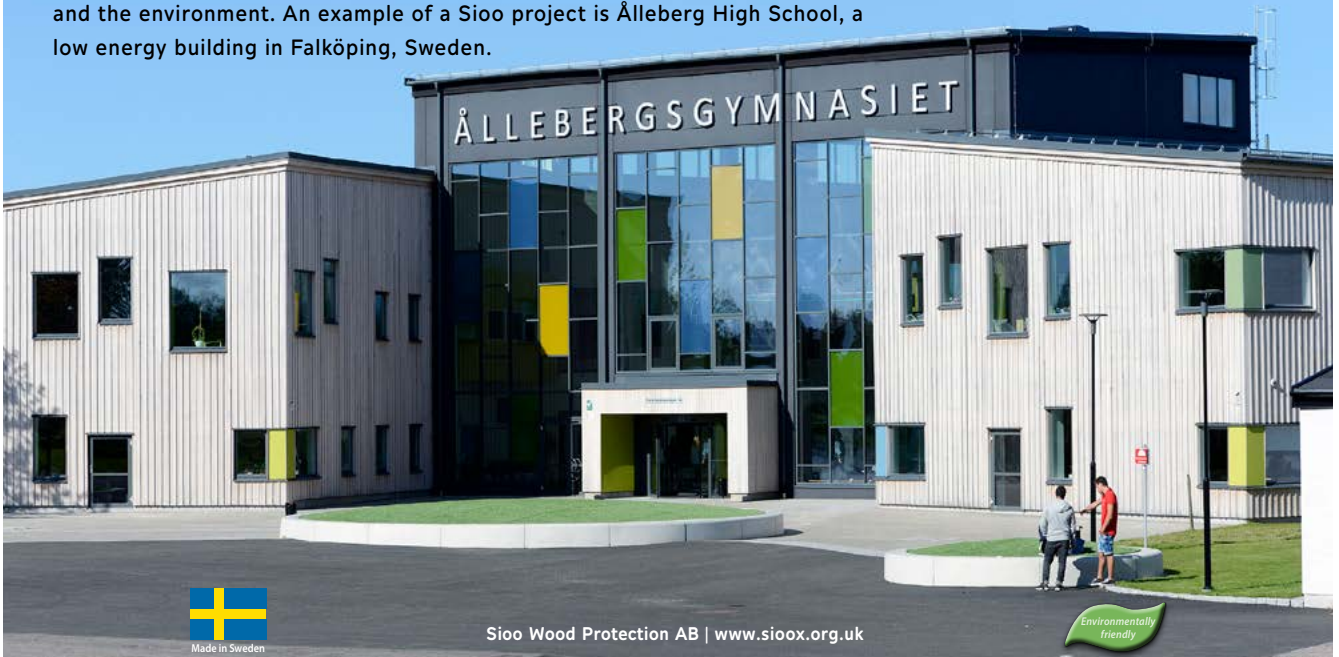
Target Timber Systems Ltd, 29 High Street, Billingham, West Sussex RH14 9PP

A sound investment – minimises life cost

Sioo are leaders in wood protection using silicate technology. We provide a highly effective proven system to protect wood of all types. It gives long life and a beautiful natural surface with even colouration and is friendly to people and the environment. An example of a Sioo project is Ålleberg High School, a low energy building in Falköping, Sweden.

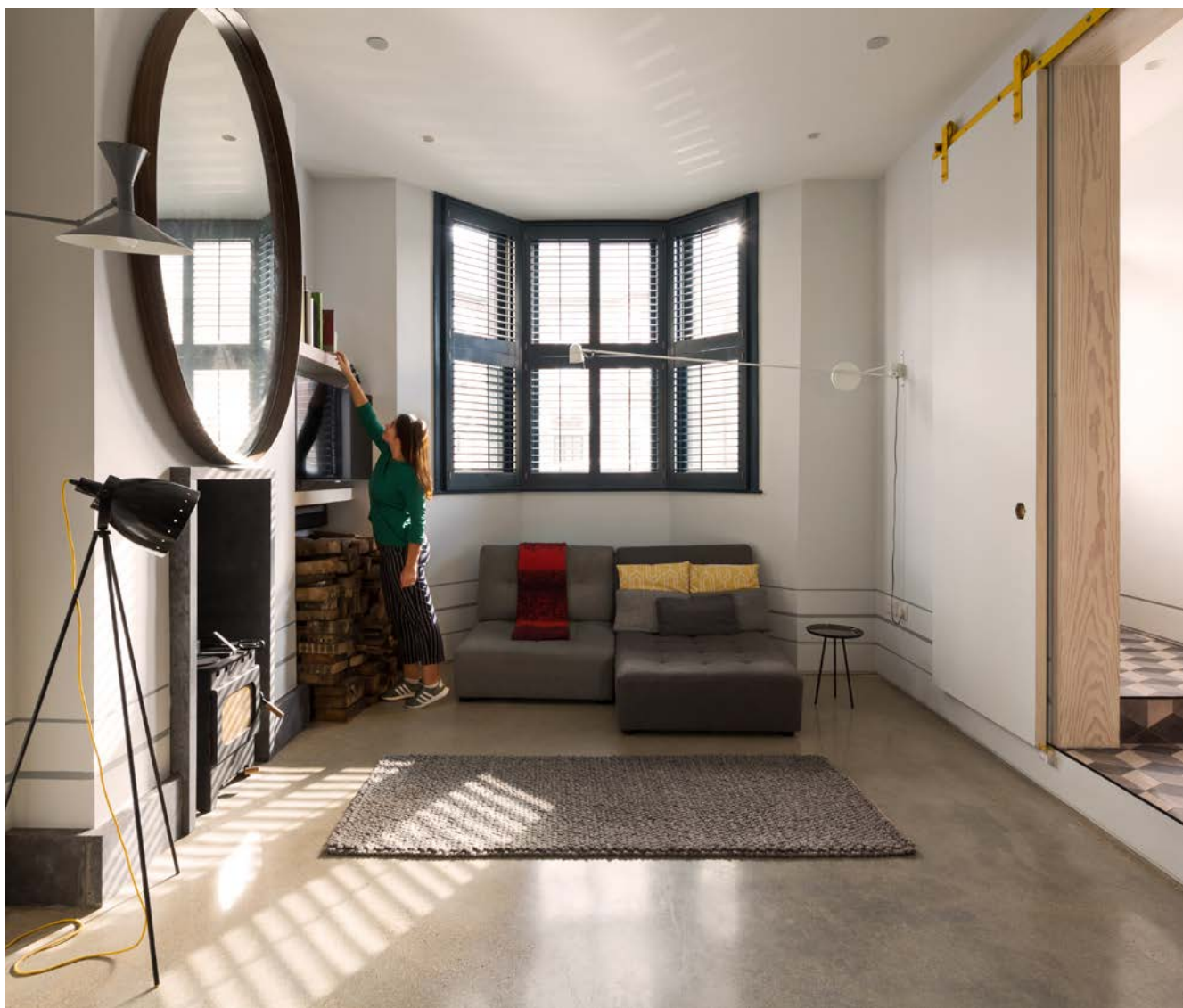


SiOO:X
WOOD PROTECTION



Sioo Wood Protection AB | www.sioox.org.uk





THE ETCH HOUSE

The Etch House re-examines the layout of the traditional Victorian terrace house. A modern floor plan sits within the old house walls, hidden behind the retained street elevation.

PROJECT DESCRIPTION:

The typical terrace 2 up 2 down house layout suffers from a narrow plan form with a set of corridor like circulation spaces. Ground floor spaces are often rooms off this cellular corridor with bedrooms at first floor compromised due to the non active circulation space that runs from front to back of the building.

The project looked to challenge the traditional layout by using the staircase to cut across the building. This removed the dark corridor and landing spaces and instead liberating the plan installing a CNC cut dynamic staircase with active landing





study and playroom spaces.

The existing internal walls, chimney breasts, staircase and floors were removed, retaining only the facade, to enable the building floor levels to be dropped to create a sunken ground floor plan that enables a generous floor to ceiling height at loft level.

All new elements to the building are clad in douglas fir to create a visual legend for the building, whilst the existing walls are retained as painted plaster.

Removed floor levels are traced onto the walls, whilst locations of the existing building features such as the roof, staircase and decorative plaster work is cut into the faces of the joinery.

High levels of insulation, solar hot array and a wildflower roof lower the carbon footprint of the building, whilst the stripped out existing house provides firewood for the stove. The old house heats the new.

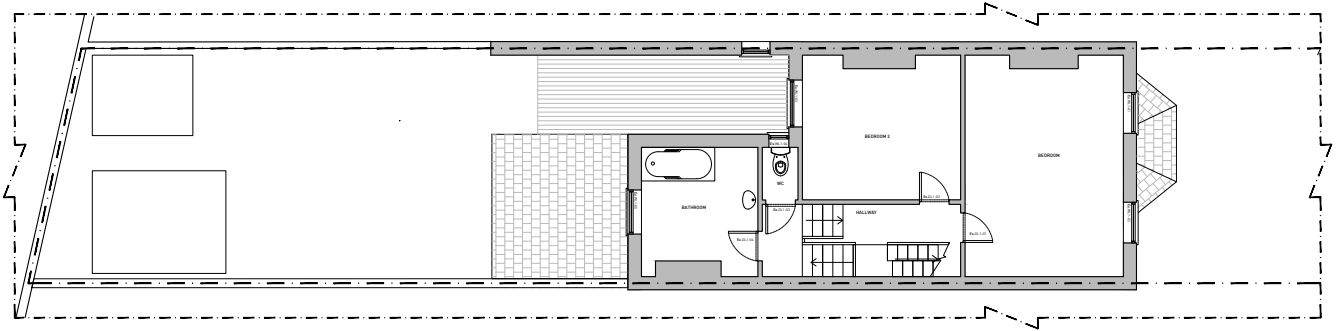
Word count: 235

2. Supporting information

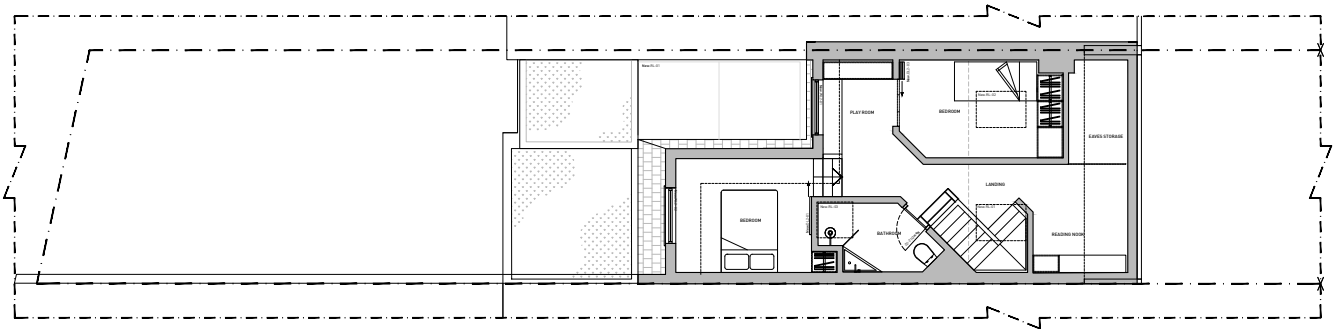
Joinery:

All the fitted furniture is designed and made to mark out the location of the original building features. Valchromat which is a through coloured MDF is used in contrast to the Douglas Fir Plywood.





EXISTING FIRST FLOOR PLAN



PROPOSED LOFT FLOOR PLAN

Colour:

Each floor level has an accent colour finish to the joinery, brassware and ironmongery. These colours were chosen by the clients daughters and provide a playful contrast to the douglas fir and grey joinery.

Doors:

The internal full height doors are clad in douglas fir, to act as opening portions of the walls within which they sit. Hexagonal brass recessed finger pull details reference the original hexagonal tiles found in the old bathrooms.

Concrete:

The polished concrete floor to the ground floor level has stones set in it collected by the owner's daughters from their travels. The concrete sinks in each bathroom are made using a black aggregate to contrasts with the colourful brassware.

Garden Door:

The garden door sits at 4 metres tall, taking advantage of the full height brickwork wall that the extension encloses onto.





Like Us!  

@screw_shop 

screwSHOP.co.uk
YOUR FRIEND IN THE TRADE FOR OVER 30 YEARS...

HUGELY DISCOUNTED TRADE PRICES!

<p>5 x 100 Screws</p>  <p style="color: white; font-weight: bold;">FROM £2.46 INC VAT</p>	<p>102mm Concrete Screws</p>  <p style="color: white; font-weight: bold;">FROM £5.25 INC VAT</p>	<p>Silicone & Sealants</p>  <p style="color: white; font-weight: bold;">FROM £1.68 INC VAT</p>
--	---	---



ORDERING ONLINE HASN'T BEEN EASIER

sage pay  

FOR A 5% DISCOUNT USE FLYER5

NE Fasteners Ltd trading as Screwshop
www.screwshop.co.uk | 0121 559 8866 | sales@screwshop.co.uk

FEIN UK — LAUNCHES VALUE PACK RANGE OFFERING PREMIUM QUALITY STARLOCK, AT AFFORDABLE PRICES



FEIN Starlock accessories are proven to last many times over that of comparable competitor blades, offering enormous value when comparing price to the life-time of the blade.

That said, the team listened to requests for assortments of accessories, releasing last year a 'Best of E-Cut' set containing six of the best cutters in the range, for a promotional price. The Best of E-Cut pack is FEIN UK's first 'official' value pack for

its UK customers, offering an assortment of the best cutters that can be used commonly on typical applications faced by tradespeople 'on the job'.

This year, FEIN UK is proud also to have announced the launch of four more additional value packs, each of which support with a particular area of work such as flooring, window work or Bathroom installations.

www.fein.com/en_uk/news/promotions/the-great-british-value-pack-range-0792/

SIMPSON STRONG TIE



One of the world's largest construction manufacturers, Simpson Strong-Tie, has released a new catalogue of structural connectors, beads and meshes aimed squarely at the repair, maintenance and improvement sector.

The 2018 eBuilder and Plasterers Essentials brochure includes all of the core products that the professional builder or plasterer reaches for when renovating or extending homes. Simpson's Sarah Greenway explains: 'We

wanted to provide something more accessible to the builders' merchant. We spoke to our customers and they told us what they really like to see in the catalogue (and what they don't particularly need), and this is the result in a brochure focussed entirely on the things that matter to the RMI sector.'

The lighter and easier to navigate brochure is now online at www.strongtie.co.uk and hard copies are available on request.

RENOVATE LINOLEUM FLOORS

PROBLEM

Many old linoleum floors found in schools, hospitals, and residential care homes are irreparably dirty and slippery. Replacement is costly and impractical due to the 24/7 operations of many of these facilities. The current prevailing method is use of aggressive stripping chemicals.

SOLUTION

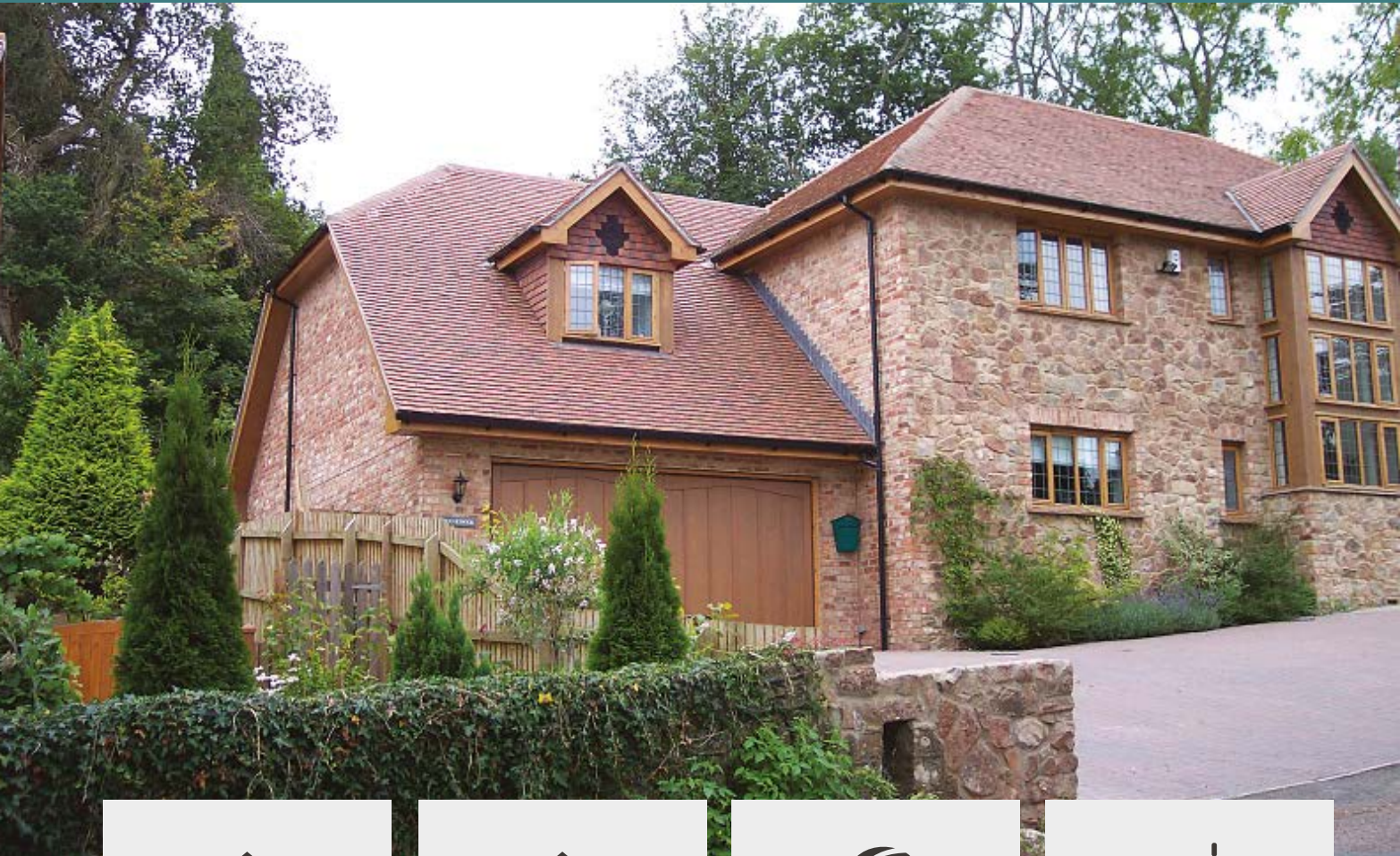
There is a better way! The patented Diamabrush™ By Malish Linoleum Renovation

System provides these benefits:

- Chemicals are no longer required
- Massive time saver over traditional methods
- Easy-to-use with available labour
- Very low cost per square meter

Many contractors realize a return on investment in just 2-3 days of work.

WWW.MALISHEUROPE.COM



Home Improvers

Whether looking to build an Ancillary Building, Extension, or even just needing help with Design, Planning & Building regulations we can help you from start to finish for whatever building you have in mind.



Selfbuilders

Building your own home or extension can be met with many challenges along the way. We can take you through the entire process from design to construction. Leaving you to enjoy building your dream without the stress.



Developers

Imagine getting planning permission, clearing your site and getting your new development up and sold in one quick easy process.

Sound easy?
With BenfieldATT its reality.



Architects

Do you spend too much of your valuable time on tasks that keep you from doing the thing you love to do - DESIGNING ?

Let us deal with many of those chores for you !



SPECIALIST TIMBER AND BUILDING SUPPLIES



High end apartments, Surrey
YOUR PROJECT WILL BE IN SAFE HANDS

With over 80 years experience providing High Quality buildings & property developments you can rest in the knowledge that you and your project will be taken well care of. Choose a standard product from one of our Trusted Brands, or you on Bespoke Service.



The first UK Amphibious house, as seen on Grand Designs

REALISE YOUR PROJECTS FASTER AND MORE COST EFFECTIVELY

From site surveys, town planning, architectural design and structural engineering, through manufacturing and specialist erection, to procurement and project management services, our Value Engineering approach is designed to help you secure the project you want



CUT YOUR CONSTRUCTION COSTS AND DELIVERY TIMES

By integrating Fast Founds + Fast Frame + Fabric First in a single price offering, our Full Service, Design & Build organisation incorporates SIP's, Timber Frame, CLT/XLAM, Fenestration and external Wall and Roof claddings to cut your construction costs and delivery times and give you price certainty.



SolidLox
 Post & Beam from Benfield



Simply Self Build
 Low Energy Homes from Benfield



Easy Timber Frame
 from Benfield ATT



TradTruss
 Traditional Feature Trusses & Frames

Fast Frame Systems
 Low Energy Buildings from Benfield

Simply Sips **Benfield Timber Merchants**
 Specialist Materials & Timber from Benfield

TimberTecs **Benfield CUSTOM Homes**
 Architectural Design and Planning from Benfield



Choose a fully Bespoke service, a trusted brand, or materials only





Firing imaginations for over 37 years



WOODBURNING | GAS  MULTI-FUEL | ELECTRIC

STOVAX | **GAZCO**
Fire Your Imagination

www.stovax.com